

Smith Packing Company, Inc.

**FULL LINE**

**FOOD SERVICE**



# Smith Packing Company

105 - 125 Washington Street ~ Utica, NY 13502

Phone: (315) 732-5125 ~ Fax: (315) 732-5129

[www.smithpacking.com](http://www.smithpacking.com)



PRESIDENT'S "E" AWARD  
For Excellence in Exporting

## TABLE OF CONTENTS

1-2	FRESH BEEF
2	FRESH BEEF - BOXED
2-3	FRESH BEEF - PORTIONS
3	FROZEN BEEF
3-4	FROZEN BEEF - GROUND
4-5	FRESH DELI MEATS
5-6	FRESH HAM & PORK
6	FROZEN HAM & PORK
6	FRESH VEAL
6-7	FROZEN VEAL
7	POULTRY - CHICKEN
8	POULTRY - DUCK
8	POULTRY - TURKEY
9	PROCESSED MEAT - BACON
9	PROCESSED MEAT - FRANKS
10	PROCESSED MEAT - SAUSAGE
11	FRESH SEAFOOD
11-12	FROZEN SEAFOOD
12	FROZEN PASTA
13	FRESH PRODUCE



# Smith Packing Company

105 - 125 Washington Street ~ Utica, NY 13502

Phone: (315) 732-5125 ~ Fax: (315) 732-5129

[www.smithpacking.com](http://www.smithpacking.com)



PRESIDENT'S "E" AWARD  
For Excellence in Exporting

## **TABLE OF CONTENTS**

13-14	FROZEN PRODUCE
14	FROZEN SOUP
14-15	FROZEN DESSERT
15	CANNED DESSERT
15	BEVERAGES
15-16	FROZEN - BAKERY
16-17	CANNED GOODS
17-18	CONDIMENTS, OILS, DRESSINGS & MORE
19-20	DRY GOODS
20	DAIRY - BUTTER
20-21	DAIRY/DELI - CHEESE
21	DAIRY - EGGS
21	DAIRY MISCELLANEOUS
21-22	DELI - SALADS
23	FRIED FOODS - APPETIZERS
23-24	FROZEN POTATOES
24-26	PAPER PRODUCTS
26	GLOVES
27	CLEANING SUPPLIES



**Smith Packing Company**  
 105 - 125 Washington Street ~ Utica, NY 13502  
 Phone: (315) 732-5125 ~ Fax: (315) 732-5129

[www.smithpacking.com](http://www.smithpacking.com)



**FRESH BEEF**

- 15000106 1/70 Lb Ave **CAB** Angus Beef Steamship Choice Rounds
- 15000413 4/17 Lb Ave **CAB** Beef 2 Up Ball Tips
- 15000227 12/6 Lb Ave **CAB** Beef 5 Up Peeled Tenderloin
- 15011026 8/10 Lb Ave **CAB** Beef 81/19 Fine Grind
- 15000133 6/10 Lb Ave **CAB** Beef Bnls 0X1 Strips
- 15000122 6/12 Lb Ave **CAB** Beef Bnls 1X1 Striploins
- 15000315 5/13 Lb Ave **CAB** Beef Bnls 2" Lip-on Ribeye
- 15000185 6/14 Lb Ave **CAB** Beef Bnls Top Butts
- 15000042 4/17 Lb Ave **CAB** Beef Bottom Round Flat
- 15000209 10/6 Lb Ave **CAB** Beef CC Bnls Top Butts
- 15000022 3/17 Lb Ave **CAB** Beef DND Top Rounds
- 15000293 4/17 Lb Ave **CAB** Beef Export Ribs Select IBP Frozen
- 15000051 12/6 Lb Ave **CAB** Beef Eye Rounds
- 15000174 3/20 Lb Ave **CAB** Beef Shortloin 0X1
- 15000001 3/22 Lb Ave **CAB** Beef Top Rounds
- 15000319 5/15 Lb Ave Choice 2" Ribeye (IBP # 15000317)
- 15000026 3/17 Lb Ave Choice Dnd Top Round (IBP # 15000024)
- 15000297 4/17 Lb Ave Choice Export (IBP # 15000295)
- 15000166 3/25 Lb Ave Choice Shortloin (IBP # 15000164)
- 15000137 6/10 Lb Ave Choice Striploin (IBP # 15000135)
- 15000231 12/6 Lb Ave Choice Tenderloin (IBP # 15000229)
- 15000189 5/14 Lb Ave Choice Top Butt (IBP # 15000187)
- 15000005 3/22 Lb Ave Choice Top Round (IBP # 15000003)
- 15000138 6/12 Lb Ave N/R 0x1 Striploin (IBP # 15000136)
- 15000342 1/65 Lb Ave N/R 2 pc ChuckMKT (IBP # 15000340)
- 15000320 6/13 Lb Ave N/R 2" Ribeye (IBP # 15000318)
- 15000038 3/25 Lb Ave N/R Bottom Round (IBP # 15000036)
- 15000027 3/17 Lb Ave N/R Dnd Top Round (IBP # 15000025)
- 15000298 4/17 Lb Ave N/R Export (IBP # 15000296)
- 15000056 12/6 Lb Ave N/R Eye Round (IBP # 15000054)
- 15000167 3/25 Lb Ave N/R Shortloin (IBP # 15000165)
- 15000232 12/6 Lb Ave N/R Tenderloin 5/Up Peeled (IBP # 15000230)



**Choice**

**No Roll**

\* FRESH BEEF CAN BE PURCHASED BY THE INDIVIDUAL PIECE or BY THE CASE



# Smith Packing Company

105 - 125 Washington Street ~ Utica, NY 13502

Phone: (315) 732-5125 ~ Fax: (315) 732-5129

[www.smithpacking.com](http://www.smithpacking.com)



PRESIDENT'S "E" AWARD  
For Excellence in Exporting

## FRESH BEEF

15000190	6/14 Lb Ave	N/R Top Butt (IBP # 15000188)
15000006	3/22 Lb Ave	N/R Top Round (IBP # 15000004)
15000359	3/22 Lb Ave	Neck-off Chuck Roll (IBP # 15000357)
15000047	4/17 Lb Ave	Sel Bottom Round Flats (IBP # 15000045)

\* FRESH BEEF CAN BE PURCHASED BY THE PIECE or BY THE CASE

## FRESH BEEF - BOXED

15000040	1/20 Lb	Bottom Round ( <i>Butcher Smith</i> )
15000048	1/18 Lb	Bottom Round Flat ( <i>Butcher Smith</i> )
15000345	1/70 Lb	Chuck 2 pc ( <i>Butcher Smith</i> )
15000363	1/24 Lb	Chuck N/O ( <i>Butcher Smith</i> )
15000059	1/6 Lb	Eye Round ( <i>Butcher Smith</i> )
15000082	1/10 Lb	Knuckle Peeled ( <i>Butcher Smith</i> )
15000299	1/17 Lb	Rib Export ( <i>Butcher Smith</i> )
15000324	1/15 Lb	Ribeye 2" Lip ( <i>Butcher Smith</i> )
15000140	1/16 Lb	Striploin 0 x 1 ( <i>Butcher Smith</i> )
15000117	1/65 Lb	Striploin 2 x 3 ( <i>Butcher Smith</i> )
15000192	1/16 Lb	Top Butt ( <i>Butcher Smith</i> )
15000204	1/12 Lb	Top Butt XT ( <i>Butcher Smith</i> )
15000009	1/24Lb	Top Round XT ( <i>Butcher Smith</i> )
15000008	1/26 Lb	Top Rounds ( <i>Butcher Smith</i> )
15000030	1/18 Lb	Top Rounds DND ( <i>Butcher Smith</i> )



## FRESH BEEF - PORTIONS

Various	Beef Lean Stew Choice <u>FRESH</u> ( <i>Butcher Smith</i> )
Various	Shortloin Cut E to E GW 0x1 ( <i>Butcher Smith</i> ) ~ Available in CAB, Choice, & No Roll
Various	Steak Delmonico - Ribeye Lip On ( <i>Butcher Smith</i> ) ~ Available in CAB, Choice, & N/R
Various	Steak Porterhouse ( <i>Butcher Smith</i> ) ~ Available in CAB, Choice, & No Roll
Various	Steak Ribeye Lip On Cut E to E GW ( <i>Butcher Smith</i> ) ~ Avail. in CAB, Choice, & N/R
Various	Steak Signature CAB ( <i>Butcher Smith</i> )
Various	Steak Strip CC 1" Tail ( <i>Butcher Smith</i> ) ~ Available in CAB, Choice, & No Roll
Various	Steak <b>T-Bone</b> ( <i>Butcher Smith</i> ) ~ Available in CAB, Choice, & No Roll



**Smith Packing Company**  
 105 - 125 Washington Street ~ Utica, NY 13502  
 Phone: (315) 732-5125 ~ Fax: (315) 732-5129  
[www.smithpacking.com](http://www.smithpacking.com)



## FRESH BEEF - PORTIONS

- Various Steak Tenderloin 1189A (**Butcher Smith**) ~ Available in CAB, Choice, & No Roll
- Various Steak Tenderloin 1190A (**Butcher Smith**) ~ Available in CAB, Choice, & No Roll
- Various Steak Top Sirloin CC Filet Style Steak (**Butcher Smith**) ~ Avail in CAB, Choice, & N/R
- Various Steak Top Sirloin CC Strip Style (**Butcher Smith**) ~ Available in CAB, Choice, & N/R
- Various Strip Whole Cut E to E 0x1 (**Butcher Smith**) ~ Available in CAB, Choice, & No Roll

\* ALL STEAKS CUT TO ORDER AND INDIVIDUALLY CRYOVACED\*

## FROZEN BEEF

- 10102040 2/5 Lb Beef Brisket Pulled (**Austin Blues**)
- 15007000 1/10 Lb Beef Kabob Tips 1"
- 15007020 1/10 Lb Beef Lean Stew Choice (**Butcher Smith**)
- 70107056 1/9-15 Lb Ave Beef Prime Rib Bnls Select - Cooked (**Tyson**)
- 15002510 3/8 Lb Ave Beef Roast O/R Netted
- 50006400 4/10 Lb Beef Steak Breakaway 4 Oz
- 98260015 4/10 Lb Beef Steak Sandwich 2 Oz
- 15001139 24/8 Oz Beef Steak Strip CAB 1st CUT
- 15002233 16/12 Oz Beef Steak Strip Choice (**Kansas City**)
- 15001521 1/10 Lb Beef Steak Tender Medallions
- 50006300 6/5 Lb Beef Steak Wafer 6 Oz
- 50006200 6/5 Lb Beef Steak Wafer 4 Oz
- 15008034 1/35-75 Lb Ave Beef Tender W/C Peeled
- 15014000 10/2 Lb Beef Meatloaf Tubes RTC (**Butcher Smith**)
- 50007115 2/5 Lb Meatball All Beef Italian 1 Oz (**Pisa**)
- 50007118 2/5 Lb Meatball All Beef Italian 2 Oz (**Pisa**)
- 50007120 1/10 Lb Meatball Banquet .5 Oz (**Pisa**)
- 50007122 1/10 Lb Meatball Banquet 1 Oz (**Pisa**)



## FROZEN BEEF - GROUND

- 15011024 8/10 Lb Ave Beef Ground 81/19 Fine Grind
- 15011025 8/10 Lb Ave Beef Ground 81/19 Fine Grind (IBP # 15011022)
- 15012010 1/10 Lb Beef Ground Lean FRESH (**Butcher Smith**)
- 15013202 1/12 Lb Beef Ground Patty CAB 2 to 1 (**Butcher Smith**)



**Smith Packing Company**  
 105 - 125 Washington Street ~ Utica, NY 13502  
 Phone: (315) 732-5125 ~ Fax: (315) 732-5129  
[www.smithpacking.com](http://www.smithpacking.com)



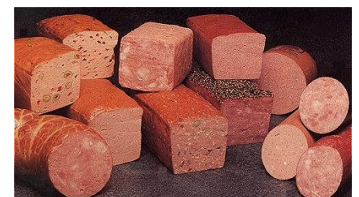
## FROZEN BEEF - GROUND

15013203	1/12 Lb	Beef Ground Patty CAB 3 to 1 ( <i>Butcher Smith</i> )
15013204	1/12 Lb	Beef Ground Patty CAB 4 to 1 ( <i>Butcher Smith</i> )
15013012	1/12 Lb	Beef Ground Patty Lean 2 to 1 ( <i>Butcher Smith</i> )
15013013	1/12 Lb	Beef Ground Patty Lean 3 to 1 ( <i>Butcher Smith</i> )
15013014	1/12 Lb	Beef Ground Patty Lean 4 to 1 ( <i>Butcher Smith</i> )
15013015	1/12 Lb	Beef Ground Patty Lean 5 to 1 ( <i>Butcher Smith</i> )
15013016	1/12 Lb	Beef Ground Patty Lean 6 to 1 ( <i>Butcher Smith</i> )
15013017	1/12 Lb	Beef Ground Patty Lean 7 to 1 ( <i>Butcher Smith</i> )
15013018	1/12 Lb	Beef Ground Patty Lean 8 to 1 ( <i>Butcher Smith</i> )
15013112	1/12 Lb	Beef Ground Patty Regular 2 to 1 ( <i>Butcher Smith</i> )
15013113	1/12 Lb	Beef Ground Patty Regular 3 to 1 ( <i>Butcher Smith</i> )
15013114	1/12 Lb	Beef Ground Patty Regular 4 to 1 ( <i>Butcher Smith</i> )
15013115	1/12 Lb	Beef Ground Patty Regular 5 to 1 ( <i>Butcher Smith</i> )
15013116	1/12 Lb	Beef Ground Patty Regular 6 to 1 ( <i>Butcher Smith</i> )
15013117	1/12 Lb	Beef Ground Patty Regular 7 to 1 ( <i>Butcher Smith</i> )
15012110	1/10 Lb	Beef Ground Regular <u>FRESH</u> ( <i>Butcher Smith</i> )



## FRESH DELI MEATS

05006000	1/7 Lb Ave	Bologna Deli ( <i>Honest John's</i> )
05006005	1/7 Lb Ave	Bologna Deli Beef ( <i>Honest John's</i> )
05006100	12/1 Lb Ave	Bologna Ring ( <i>Honest John's</i> )
05006065	1/6 Lb Ave	Cheese Hot Head ( <i>Honest John's</i> )
05006060	1/6 Lb Ave	Cheese White Head ( <i>Honest John's</i> )
15025050	2/4.5 Lb Ave	Corned Beef Rounds Cooked ( <i>Honest John's</i> )
20003075	2/22 Lb Ave	Ham Bone-In ( <i>Honest John's</i> )
20002037	3/14 Lb Ave	Ham 10% Deli Cooked ( <i>Honest John's</i> )
20003010	2/7.5 Lb Ave	Ham Country Style Smoked ( <i>Honest John's</i> )
20002100	2/12.5 Lb Ave	Ham Virginia Baked ( <i>Honest John's</i> )
05006045	1/5 Lb Ave	Italian Loaf ( <i>Honest John's</i> )
05006055	2/7 Lb Ave	Liverwurst ( <i>Honest John's</i> )
05006020	1/5 Lb Ave	Olive Loaf ( <i>Honest John's</i> )





**Smith Packing Company**  
 105 - 125 Washington Street ~ Utica, NY 13502  
 Phone: (315) 732-5125 ~ Fax: (315) 732-5129  
[www.smithpacking.com](http://www.smithpacking.com)



## FRESH DELI MEATS

15025060	2/5.5 Lb Ave	Pastrami Round Lean ( <i>Honest John's</i> )
10102000	12/2 Lb Ave	Pepperoni Long Stick ( <i>Hormel</i> )
10102010	1/10 Lb	Pepperoni Rosa Link ( <i>Hormel</i> )
10102025	1/10 Lb	Pepperoni Sliced ( <i>Bonici</i> )
05006040	1/5 Lb Ave	Polish Loaf ( <i>Honest John's</i> )
15025010	2/7 Lb Ave	Roast Beef Capless Cooked ( <i>Honest John's</i> )
15025015	2/7 Lb Ave	Roast Beef VIP ( <i>Honest John's</i> )
05006050	1/7 Lb Ave	Salami Deli Cotto ( <i>Honest John's</i> )
25011002	2/8 Lb Ave	Turkey Breast GOLDEN LEGACY Oil Brown ( <i>Honest John's</i> )
25011000	2/8 Lb Ave	Turkey GOLD LABEL ( <i>Honest John's</i> )



## FRESH HAM & PORK

20003016	2/12-14 Lb Ave	Ham (Classic Round) Water Added ( <i>Indiana Kitchens</i> )
20002176	4/7-8 Lb Ave	Ham 1/2 - Spiral Sliced ( <i>Indiana Kitchens</i> )
20002175	10/2-3 Lb Ave	Ham 1/4 - Retail ( <i>Indiana Kitchens</i> )
20002043	4/13 Lb	Ham 35% Deli ( <i>Hormel</i> )
20002070	2/12 Lb	Ham Boiled Imported ( <i>Celebrity</i> )
20002108	1/10 Lb Ave	Ham Flat BM "Menu Pride" ( <i>Farmland</i> )
20002160	2/12-14 Lb Ave	Ham Flat Slicing ( <i>Indiana Kitchens</i> )
20002174	6/4.5 Lb Ave	Ham Half Boneless - Retail ( <i>Indiana Kitchens</i> )
20003050	2/14 Lb Ave	Ham Pit Boneless Smoked ( <i>Farmland</i> )
20002041	2/12 Lb Ave	Ham Round Breakfast Smoked ( <i>Farmland</i> )
20002039	2/13.3 Lb Ave	Ham Royal Danish NJ ( <i>Farmland</i> )
70104425	20/1 Lb Ave	Ham Steaks RETAIL ( <i>Indiana Kitchens</i> )
20002173	7/9 Lb Ave	Ham Whole Boneless - Retail ( <i>Indiana Kitchens</i> )
20010105	1/12 Lb	Pork Spare Ribs Country Style ( <i>Butcher Smith</i> )
20005010	2/7.5 Lb Ave	Pork Butts Bone In - FRESH ( <i>Indiana Kitchens</i> )
20005015	1/15 Lb Ave	Pork Butts Boneless - FRESH ( <i>Indiana Kitchens</i> )
20005025	2/16 Lb Ave	Pork Loins Bone In - FRESH ( <i>Indiana Kitchens</i> )
20006045	1/8 Lb Ave	Pork Loins Boneless CC - FRESH ( <i>Indiana Kitchens</i> )
20005040	2/16 Lb Ave	Pork Loins CC 2 Pc Cryo Bone In ( <i>Indiana Kitchens</i> )
20005086	1/12 Pc	Pork Ribs Pre-Cooked ( <i>Austin Blues</i> )







**Smith Packing Company**  
 105 - 125 Washington Street ~ Utica, NY 13502  
 Phone: (315) 732-5125 ~ Fax: (315) 732-5129  
[www.smithpacking.com](http://www.smithpacking.com)



## FRESH HAM & PORK

- 20005080 4/2/3.5 Lb Ave Pork RibS 4 & Down Cryovac - FRESH (*Indiana Kitchens*)
- 20005089 1/26 Lb Ave Pork Ribs St. Louis 2.5 & Down Individual Cryovac - FRESH (*Indiana Kitchens*)
- 20005055 1/40 Lb Ave Pork Sirloins - FRESH (*Indiana Kitchens*)

## FROZEN HAM & PORK

- 20020000 1/17 Lb Ave Ham BRT Fresh - FROZEN (*Indiana Kitchens*)
- 20006002 3/9 Lb Ave Ham BRT Fresh Gourmet - FROZEN (*Butcher Smith*)
- 20006002 3/9 Lb Ave Ham Gourmet BRT Fresh - FROZEN (*Indiana Kitchens*)
- 20022140 6/12 Pc Ham Steak Mini Breakfast Bone In (*Farmland*)
- 20022110 3/12 Pc Hawg - Wild Wings (*Farmland*)
- 20022128 20/8 Oz Pork Fillet Bacon Wrapped - FROZEN (*Farmland*)
- 10102035 2/5 Lb Pork Pulled (*Austin Blues*)
- 20005075 1/30 Lb Ave Ribs Baby Back Frozen 2 & down (*Indiana Kitchens*)



A Very Particular Food Company



Good Food from the Heartland™  
Since 1959

## FRESH VEAL

- 35000232 2/5 Lb Veal Chop Ready Rack 6 Bone RTS (*Delft Blue*)
- 30000160 5/9 Lb Ave Veal Legs Trim Eye of Round (*Delft Blue*)
- 30000180 1/9-12 Lb Ave Veal Loins Trim Loin 4 X 4 (*Delft Blue*)
- 35001051 2/7 Lb Ave Veal Netted Clod (Shoulder Roast) ~ (*Delft Blue*)
- 35000120 2/7.5 Lb Ave Veal Top Round Cap On (Drop) ~ (*Delft Blue*)
- 35000140 2/5.5 Lb Ave Veal Top Round Capless (Peeled) ~ (*Delft Blue*)

## FROZEN VEAL

- 35000269 1/10 Lb Ave Veal Hindshank Osso Buco 2 inch Vac Pack (*Delft Blue*)
- 35001122 1/10 Lb Veal Leg Cutlets Pinned & Pounded 2 Oz (*Delft Blue*)
- 35001114 1/10 Lb Veal Leg Cutlets Pinned & Pounded 4 Oz (*Delft Blue*)
- 35001115 1/10 Lb Veal Leg Cutlets Pinned & Pounded 5 Oz (*Delft Blue*)
- 35001116 1/10 Lb Veal Leg Cutlets Pinned & Pounded 6 Oz (*Delft Blue*)
- 35000700 1/11.25 Lb Ave Veal Milanese Rib Chop (7th Rib) 8-12 Oz (20 per cs) ~ (*Delft Blue*)
- 35001145 1/10 Lb Veal Steak Italian Breaded 4 Oz (*Delft Blue*)
- 35001060 1/10 Lb Veal Stew Hand Cut (*Delft Blue*)





# Smith Packing Company

105 - 125 Washington Street ~ Utica, NY 13502

Phone: (315) 732-5125 ~ Fax: (315) 732-5129

[www.smithpacking.com](http://www.smithpacking.com)



PRESIDENT'S "E" AWARD  
For Excellence in Exporting

## FROZEN VEAL

- 35001104 1/10 Lb Veal Top Round Cutlets 4 Oz (*Delft Blue*)
- 35001105 1/10 Lb Veal Top Round Cutlets 5 Oz (*Delft Blue*)
- 35001106 1/10 Lb Veal Top Round Cutlets 6 Oz (*Delft Blue*)



## POULTRY - CHICKEN

- 25004557 2/5 Lb Chicken Breaded Sub 3.7 Oz CN FROZEN(*Speedybird*)
- 25004018 20/8 Oz Chicken Breast Bnls/Snls IQF (*Tyson*)
- 25004015 32/5 Oz Chicken Breast Bnls/Snls IQF (*Tyson*)
- 25004014 40/4 Oz Chicken Breast Bnls/Snls IQF (*Tyson*)
- 25004016 27/6 Oz Chicken Breast Bnls/Snls IQF (*Tyson*)
- 25002951 4/10 Lb Chicken Breast Boneless Skinless - **FRESH**
- 25004543 2/5 Lb Chicken Breast Chunk Fritter FROZEN(*Speedybird*)
- 25004540 2/5 Lb Chicken Breast Grill Marked Boneless Skinless 3 Oz FROZEN(*Speedybird*)
- 25004012 2/5 Lb Chicken Breast Grill Marked Boneless Skinless 4 Oz FROZEN (*Speedybird*)
- 25004927 2/5 Lb Chicken Breast Strips Grill Marked FROZEN (*Speedybird*)
- 25004536 2/5 Lb Chicken Diced 1/2" 60/40 FC IQF (*Speedybird*)
- 25004556 2/5 Lb Chicken Fillet Fritter 2 Oz FROZEN (*Speedybird*)
- 25002033 24/3 Lb Chicken Fryers 24 HD CVP - **FRESH**
- 25004627 12/14 Oz Chicken Honey Stung FC 4 Pc **FROZEN** (*Tyson*)
- 25004940 1/10 Lb Chicken Nuggets 240 Ct FROZEN (*House of Raeford*)
- 25004935 54/3 Oz Chicken Patties FROZEN (*House of Raeford*)
- 25004541 2/5 Lb Chicken Patty Strip CN FROZEN (*Speedybird*)
- 25004558 2/5 Lb Chicken Southern Fritter Tender FROZEN (*Speedybird*)
- 25004547 2/5 Lb Chicken Tender Breaded - Fully Cooked FROZEN (*Speedybird*)
- 25004910 1/10 Lb Chicken Tender Breaded Brandywine **FROZEN** (*Tyson*)
- 25004553 2/5 Lb Chicken Tender Fritter Homestyle Breaded FROZEN (*Speedybird*)
- 25004550 1/10 Lb Chicken Tenderloin Breaded **FROZEN** (*Speedybird*)
- 50006100 4/10 Lb Chicken Wafer Steak 4 Oz - FROZEN
- 25004548 2/7.5 Lb Chicken Wings Breaded Cooked Split FROZEN (*Speedybird*)
- 25002977 4/10 Lb Chicken Wings Jumbo Split Cut - **FRESH**
- 25004542 2/5 Lb Chicken Wings Roasted Split FROZEN (*Speedybird*)





**Smith Packing Company**  
 105 - 125 Washington Street ~ Utica, NY 13502  
 Phone: (315) 732-5125 ~ Fax: (315) 732-5129  
[www.smithpacking.com](http://www.smithpacking.com)



**POULTRY - DUCK**

- 25024024 12/10-12 Oz Duck 1/2 Roast Cooked FROZEN
- 25024009 24/8-10 Oz Duck Breast Bnls FROZEN
- 25004142 1/25-30 Lb Ave Duck Feet FROZEN
- 25024030 12/8 Oz Duck Leg Confit FROZEN
- 25004144 3/10 Lb Duck Wings FROZEN
- 25004145 6/4.5 Lb Ave Duckling Whole FROZEN
- 25004165 6/6.5 Lb Ave Duckling Whole FROZEN



**POULTRY - TURKEY**

- 25012077 1/36 Lb Ave Turkey Breast Boneless- FROZEN
- 95251117 2/6.5 Lb Ave Turkey Breast Cajun Pepper (**Butterball**)
- 25011030 2/10 Lb Ave Turkey Breast Northwest White (**Jennie-O**)
- 25004953 1/15 Lb Turkey Breast Sliced Oven Roasted FROZEN (**House of Raeford**)
- 95251122 2/9 Lb Ave Turkey Breast Smoked Skinless (**Butterball**)
- 95251133 12/12 Oz Turkey Breast Variety Pack (**Butterball**)
- 25012105 1/30 Lb Turkey Drumsticks - FROZEN (**House of Raeford**)
- 95251131 12/16 Oz Turkey Ham (**Butterball**)
- 25004954 3/5 Lb Turkey Ham FROZEN (**House of Raeford**)
- 25011050 2/9 Lb Ave Turkey Roast 60/40 FROZEN (**Jennie-O**)
- 75701000 2/10 Lb Ave Turkey Roast All White Bake/Bag FROZEN (**Jennie-O**)
- 25011067 3/4 Lb Turkey Roast Mini Fully Cooked FROZEN (**House of Raeford**)
- 95251144 15/14 Oz Turkey Smoked SS Polska (**Butterball**)
- 95251143 15/14 Oz Turkey Smoked SSG Tender (**Butterball**)
- 25011151 1/40 Lb Turkey Thigh B/S - FROZEN (**House of Raeford**)
- 25004952 1/10 Lb Turkey While Pulled IQF (**House of Raeford**)
- 25012015 4/12-14 Lb Ave Turkey Whole - FROZEN (**House of Raeford**)
- 25012020 4/14-16 Lb Ave Turkey Whole - FROZEN (**House of Raeford**)
- 25012025 4/16-18 Lb Ave Turkey Whole - FROZEN (**House of Raeford**)
- 25012030 2/18-20 Lb Ave Turkey Whole - FROZEN (**House of Raeford**)
- 25012035 2/20-22 Lb Ave Turkey Whole - FROZEN (**House of Raeford**)
- 25012040 2/22-24 Lb Ave Turkey Whole - FROZEN (**House of Raeford**)





**Smith Packing Company**  
 105 - 125 Washington Street ~ Utica, NY 13502  
 Phone: (315) 732-5125 ~ Fax: (315) 732-5129  
[www.smithpacking.com](http://www.smithpacking.com)



**PROCESSED MEAT - BACON**

20001330	2/4 Lb	Bacon Canadian ( <i>Hormel</i> )
20002000	1/15 Lb	Bacon Layout 18/22 ( <i>Butcher Smith</i> )
20002001	1/15 Lb	Bacon Layout 14/18 ( <i>Invidia Kitchen</i> )
20001100	3/100 Ct	Bacon Pre-cooked Think & Wavy ( <i>Indiana Kitchen</i> )
20001900	24/1 Lb	Bacon Regular Sliced Retail ( <i>Indiana Kitchen</i> )
75000012	24/1 Lb	Bacon Sliced Retail 16 oz ( <i>Sugardale</i> )
20001305	2/96 Slice	Bacon Round Pre-Cooked ( <i>Indiana Kitchen</i> )
20001929	1/15 Lb	Bacon Slab Sliced 18/22 ( <i>Butcher Smith</i> )
20001930	1/30 Lb	Bacon Sliced Slab 14/18 Lb ( <i>Indiana Kitchen</i> )
20001200	2/5 Lb	Bacon Topping ( <i>Indiana Kitchen</i> )



**PROCESSED MEAT - FRANKS**

05001020	1/12 Lb	Franks All <b>Beef</b> 10 to 1 - BULK ( <i>Honest John's</i> )
05001004	1/12 Lb	Franks All Meat 4 to 1 - BULK ( <i>Honest John's</i> )
05001008	1/12 Lb	Franks All Meat 8 to 1 - BULK ( <i>Honest John's</i> )
05001010	1/12 Lb	Franks All Meat 10 to 1 - BULK ( <i>Honest John's</i> )
05005048	24/16 Oz	Franks All Meat 8 to 1 - RETAIL ( <i>OHSE</i> )
05003010	12/1 Lb	Franks All Meat 10 to 1 - RETAIL ( <i>Honest John's</i> )
05005047	2/5 Lb	Franks Beef Gold Medal 5 to 1 ( <i>Farmland</i> )
05005046	12/16 Oz	Franks Beef Jumbo 8 to 1 ( <i>Farmland</i> )
05001003	1/12 Lb	Franks Giant 3 to 1 ( <i>Honest John's</i> )
05003008	12/1 Lb	Franks Jumbo 8 to 1 - RETAIL ( <i>Honest John's</i> )
05001017	1/12 Lb	Franks Natural Casing German 7 to 1 - BULK ( <i>Honest John's</i> )
05003017	12/1 Lb	Franks Natural Casing German 7 to 1 - RETAIL ( <i>Honest John's</i> )
05003009	12/1 Lb	Franks Queen 8 to 1 - RETAIL ( <i>Honest John's</i> )
05001004	1/12 Lb	Franks Roller 4 to 1 ( <i>Honest John's</i> )
05001036	1/12 Lb	Franks Roller 6 to 1 ( <i>Honest John's</i> )





**Smith Packing Company**  
 105 - 125 Washington Street ~ Utica, NY 13502  
 Phone: (315) 732-5125 ~ Fax: (315) 732-5129  
[www.smithpacking.com](http://www.smithpacking.com)



**PROCESSED MEAT - SAUSAGE**

05003023	12/1 Lb	Knockwurst - FRESH Retail ( <i>Honest John's</i> )
10002050	8/5 Lb	Sausage Breakfast Bulk Bag - FROZEN ( <i>Honest John's</i> )
10002030	2/6 Lb	Sausage Breakfast Links H/C - FROZEN ( <i>Honest John's</i> )
10002120	80/2 Oz	Sausage Breakfast Links Raw - FROZEN ( <i>Farmland</i> )
10002020	1/12 Lb	Sausage Breakfast Links S/C - FROZEN ( <i>Honest John's</i> )
10002040	1/12 Lb	Sausage Breakfast Patties 4 to 1 - FROZEN ( <i>Honest John's</i> )
10002045	1/12 Lb	Sausage Breakfast Patties 6 to 1 - FROZEN ( <i>Honest John's</i> )
10002070	1/12 Lb	Sausage Breakfast Patties Pork 2 Oz - FROZEN ( <i>Regional</i> )
10002090	1/12 Lb	Sausage Breakfast Patties Pork 4 Oz - FROZEN ( <i>Regional</i> )
10002000	1/12 Lb	Sausage Brown & Serve 1 Oz Links - FRESH ( <i>Honest John's</i> )
10002105	1/10 Lb	Sausage Bulk Italian Medium - FROZEN ( <i>Regional Blue</i> )
10000490	1/10 Lb	Sausage Bulk Medium Italian - FRESH ( <i>Regional</i> )
10002100	1/5 Lb	Sausage Bulk Pork - FROZEN ( <i>Regional</i> )
10000440	1/10 Lb	Sausage Bulk Sweet Italian - FRESH ( <i>Regional</i> )
10001005	1/12 Lb	Sausage Calypso Cooked - FROZEN ( <i>Roadrunner</i> )
10001000	1/12 Lb	Sausage Italian Cooked - FROZEN ( <i>Roadrunner</i> )
10002122	160/1 Oz	Sausage Patty Cooked - FROZEN ( <i>Farmland</i> )
10002121	80/2 Oz	Sausage Patty Cooked - FROZEN ( <i>Farmland</i> )
10000545	1/12 Lb	Sausage Patty HOT Italian 2 to 1 - FRESH ( <i>Regional</i> )
10000550	1/12 Lb	Sausage Patty HOT Italian 4 to 1 - FROZEN ( <i>Regional</i> )
10000560	1/12 Lb	Sausage Patty HOT Italian 5 to 1 - FROZEN ( <i>Regional</i> )
10000570	1/12 Lb	Sausage Patty HOT Italian 6 to 1 - FROZEN ( <i>Regional</i> )
10000250	1/12 Lb	Sausage Patty Italian Sweet 4 to 1 - FROZEN ( <i>Regional</i> )
10000270	1/12 Lb	Sausage Patty Italian Sweet 6 to 1 - FROZEN ( <i>Regional</i> )
10001010	1/12 Lb	Sausage Polish ( <i>Roadrunner</i> )
10002200	25/1 Lb Ave	Sausage Polish, Cryovac - FRESH Retail ( <i>Honest John's</i> )
10002250	25/1 Lb Ave	Sausage Polish, Picnic Cryo - FRESH Retail ( <i>Honest John's</i> )
10000400	1/10 Lb	Sausage Rope Italian Medium - FROZEN ( <i>Regional Blue</i> )
10000480	1/10 Lb	Sausage Rope Medium Italian - FRESH ( <i>Regional</i> )
10000420	1/10 Lb	Sausage Rope Sweet Italian - FRESH ( <i>Regional</i> )
10002150	12/1 Lb	Sausage Smoked HOT BEEF - FRESH Retail ( <i>Honest John's</i> )
10002140	12/1 Lb	Sausage Smoked MILD BEEF - FRESH Retail ( <i>Honest John's</i> )





**Smith Packing Company**  
 105 - 125 Washington Street ~ Utica, NY 13502  
 Phone: (315) 732-5125 ~ Fax: (315) 732-5129  
[www.smithpacking.com](http://www.smithpacking.com)



**FRESH SEAFOOD**

30000378	1/1 Lb	Crab Blue Claw Meat
30000008	1/1 Lb Avg	Haddock 6 to 8 Oz
30000009	1/1 Lb Avg	Haddock 8 to 10 Oz
30000011	1/1 Lb Avg	Haddock 10 to 12 Oz
30000016	1/1 Lb Avg	Haddock 12 to 16 Oz
30000520	1/8 Lb Gal	Oysters Select <b>OR</b> Standard
30000355	3-4 Lb Avg	Salmon Fillets
30000420	1/8 Lb Gal	Scallops DRY U10
30000421	1/10 Lb Gal	Scallops DRY 10/20
30000430	1/8 Lb Gal	Scallops DRY 20/30
30000370	1/1 Lb Avg	Sole Fillet 4-6 Oz



**FRESH  
 CLAMS ARE  
 AVAILABLE  
 IN SEASON  
 PLEASE  
 CHECK WITH  
 YOUR  
 SALEMAN  
 FOR  
 AVAILABILITY**



**FROZEN SEAFOOD**

30006050	20/2.5 Lb	Calamari Tubes ONLY
30008050	2/5 Lb	Clam Meat Chopped ( <b>Seawatch</b> )
30005035	24/4 Oz	Clam Strips ( <b>Seawatch</b> )
30008038	2/5 Lb	Clam Strips SUPER ( <b>LaMonica</b> )
30006025	12/2.5 Lb	Crabmeat Imitation
30000003	1/25 Lb	Haddock 8 to 10 Oz
30000002	1/25 Lb	Haddock 10 to 12 Oz
31089528	1/10 Lb	Haddock Breaded Zesty Lemon Oven Roasted ( <b>American Pride</b> )
30004140	12/1 Lb	Haddock Fillet Cooked Retail ( <b>Viking</b> )
30004004	1/10 Lb	Haddock Fillet Raw Breaded 4 Oz ( <b>Viking</b> )
30004005	1/10 Lb	Haddock Fillet Raw Breaded 5 Oz ( <b>Viking</b> )
30004006	1/10 Lb	Haddock Fillet Raw Breaded 6 Oz ( <b>Viking</b> )
30004008	1/10 Lb	Haddock Fillet Raw Breaded 8 Oz ( <b>Viking</b> )
30007070	20/8 Oz	Halibut Fillets
30006030	1/20 Lb	King Crab Legs 16/20
30006035	1/10 Lb	King Crab Legs 20/Up
30000620	6/2 Lb	Lobster Knuckle Leg Meat
30000604	1/10 Lb	Lobster Tails 4 Oz
30000606	1/10 Lb	Lobster Tails 6 Oz
30000608	1/10 Lb	Lobster Tails 8 Oz
30000610	1/10 Lb	Lobster Tails 10 Oz





**Smith Packing Company**  
 105 - 125 Washington Street ~ Utica, NY 13502  
 Phone: (315) 732-5125 ~ Fax: (315) 732-5129  
[www.smithpacking.com](http://www.smithpacking.com)



**FROZEN SEAFOOD**

30004112	1/10 Lb	Pollock Wedge Raw Beer Battered 2 Oz ( <i>Viking</i> )
30006084	20/8 Oz	Salmon Fillets CC Skinless
30008033	1/10 Lb	Scallops Breaded Kentucky Style 60 CT ( <i>American Pride</i> )
30003040	2/5 Lb	Scallops IQF 20/30 ( <i>American Pride</i> )
30003040	2/5 Lb	Scallops IQF U10 ( <i>American Pride</i> )
30007097	1/10 Lb	Seabass Fillets 6 Oz
30005027	6/2.5 Lb	Shrimp Butterfly 21/25
30002137	5/2 Lb	Shrimp Cooked P & D Tail-On 16/20
30002139	5/2 Lb	Shrimp Cooked P & D Tail-On 26/30
30002140	5/2 Lb	Shrimp Cooked P & D Tail-On 31/40
30000425	5/5 Lb	Shrimp Pieces ( <i>American Pride</i> )
30000435	6/5 Lb	Shrimp Pieces Large ( <i>American Pride</i> )
30005030	12/8 Oz	Shrimp in a Pouch Breaded
30002112	10/2 Lb	Shrimp Raw IQF P&D Tail-ON 13/15
30002114	10/2 Lb	Shrimp Raw IQF P&D Tail-ON 16/20
30001226	10/5 Lb	Shrimp Shell-ON 21/25 ( <i>Ocean Garden</i> )
30001130	10/5 Lb	Shrimp Shell-ON 26/30 ( <i>Ocean Garden</i> )
30002060	10/5 Lb	Shrimp White Shell On 51/60
30002070	10/5 Lb	Shrimp White Shell On 61/70
30007075	20/8 Oz	Swordfish Steaks
30007046	1/10 Lb	Tilapia Fillet 5-7 Oz IQF ( <i>American Pride</i> )
31089527	40/4 Oz	Tilapia Italian Parmesan Cornmeal O/R ( <i>American Pride</i> )
31089739	1/10 Lb	Tilapia Tenders Buttermilk Battered ( <i>American Pride</i> )



**FROZEN PASTA**

50003600	3/2.5 Lb	Ravioli - Jumbo
50003602	2/2.5 Lb	Ravioli - Lobster
50003583	1/10 Lb	Ravioli - Shrimp Scampi





**Smith Packing Company**  
 105 - 125 Washington Street ~ Utica, NY 13502  
 Phone: (315) 732-5125 ~ Fax: (315) 732-5129  
[www.smithpacking.com](http://www.smithpacking.com)



**FRESH PRODUCE**

40000060	1/40 Lb	Bananas
40000143	1/54 Ct	Limes
40000078	1/18 Lb Pail	Salad Fresh FRUIT Pail 12 Lb Drained
40000180	1/8 Pt	Strawberries
40001040	1/20 Lb	Broccoli Crowns
40001050	1/50 Lb	Cabbage
40001090	1/25 Lb	Carrots Jumbo
40001230	1/24 Ct	Lettuce Iceberg
40001310	1/10 Lb	Mushrooms (Medium)
40001370	1/50 Lb	Onions Spanish
40001420	1/24 Lb	Peppers (Green)
40001443	1/24 Lb	Peppers (Suntan)
40001460	1/50 Lb	Potatoes Chef
40001500	1/80 Ct	Potatoes Russet
40001510	1/90 Ct	Potatoes Russet
40001575	4/5 Lb	Salad Mix
40001640	1/25 Lb	Tomatoes 5x6
40001650	1/25 Lb	Tomatoes 6x6



**FROZEN PRODUCE**

40010027	1/10 Lb	Blackberries IQF
40010033	1/30 Lb	Blueberries Cultivated IQF
40010030	1/10 Lb	Blueberries IQF
40010056	4/5.5 Lb	Raspberries IQF
40010060	1/30 Lb	Rhubarb - BULK
40010090	6/6.5 Lb	Strawberries Sliced 4 to 1
40010075	1/10 Lb	Strawberries Whole IQF
40021100	8/3 Lb	Antigua Culinary Select ( <b><i>Simplot</i></b> )
40020010	1/20 Lb	Broccoli Cuts - BULK
40021003	12/32 Oz	Broccoli Florets Classic ( <b><i>Simplot</i></b> )
40021036	12/32 Oz	California Blend Classic ( <b><i>Simplot</i></b> )
40021001	12/32 Oz	Carrots Classic Cut ( <b><i>Simplot</i></b> )







**Smith Packing Company**  
 105 - 125 Washington Street ~ Utica, NY 13502  
 Phone: (315) 732-5125 ~ Fax: (315) 732-5129  
[www.smithpacking.com](http://www.smithpacking.com)



**FROZEN PRODUCE**

40020040	1/20 Lb	Carrots Sliced - BULK
40020050	1/20 Lb	Corn - BULK
40021000	12/40 Oz	Corn Classic Cut ( <i>Simplet</i> )
40020020	1/20 Lb	Green Beans Cut - BULK
40020080	1/20 Lb	Mixed Vegetables - BULK
40021101	8/3 Lb	Monaco Culinary Select ( <i>Simplet</i> )
40030065	12/2.5 Lb	Peas & Carrots
40020070	1/20 Lb	Peas Green - BULK
40021075	6/2.5 Lb	Peppers & Onion - Roastworks ( <i>Simplet</i> )
40021018	12/3 Lb	Spinach Chopped Classic ( <i>Simplet</i> )
40021050	6/2.5 Lb	Tuscano Orzo - Roastworks ( <i>Simplet</i> )



**FROZEN SOUP**

50201045	4/4 Lb	Beef & Barley Soup ( <i>Blount</i> )
50201035	4/4 Lb	Broccoli & Cheese Soup ( <i>Blount</i> )
50201055	4/4 Lb	Butternut Squash & Apple Soup ( <i>Blount</i> )
50201020	4/4 Lb	Chicken & Noodle Rosies Soup ( <i>Blount</i> )
50201070	4/4 Lb	Italian Wedding Soup ( <i>Blount</i> )
50201019	4/4 Lb	Maine Lobster Bisque ( <i>Blount</i> )
50201010	4/4 Lb	New England Clam Chowder ( <i>Blount</i> )
50201015	4/4 Lb	Roasted Shrimp & Corn Bisque ( <i>Blount</i> )
50201091	4/4 Lb	Scallop & Bacon Chowder ( <i>Blount</i> )
50201092	4/4 Lb	Steak & Ale Chowder ( <i>Blount</i> )
50201065	4/4 Lb	Stuffed Pepper Soup ( <i>Blount</i> )



**FROZEN DESERTS**

50605414	2/5 Lb	Cake Chocolate Peanut Butter Landslide
50605390	2/6 Lb 14 Oz	Cake Double Chocolate Fudge 14 Sl
50605344	2/10 Lb 7 Oz	Cake Fudge (NOT SLICED)
50605356	2/9 Lb 14 Oz	Cake German Chocolate 12 Sl
50605348	2/6 Lb 15 Oz	Cake Layered Double Blackout 10"
50605412	2/6 Lb 4 Oz	Cake Triple Fudge





**Smith Packing Company**  
 105 - 125 Washington Street ~ Utica, NY 13502  
 Phone: (315) 732-5125 ~ Fax: (315) 732-5129  
[www.smithpacking.com](http://www.smithpacking.com)



## FROZEN DESERTS

50605357	2/5 Lb 7 Oz	Cheesecake Apple Pie 12 SI
50605393	2/7 Lb 2 Oz	Cheesecake Caramel Swirl 12 SI
50605350	2/6 Lb 6 Oz	Cheesecake Cherry Pie 12 SI
50605352	2/8 Lb 6 Oz	Cheesecake Chocolate
50605355	2/6 Lb 8 Oz	Cheesecake Key Lime 10" 12 SI
50605397	2/5 Lb 2 Oz	Cheesecake Plain 12 SI
50605387	2/6 Lb 12 Oz	Cheesecake Pumpkin Pecan 12 SI
50605349	2/10 Lb 9 Oz	Cheesecake Reese's Peanut Butter Cup
50605401	9/3 Lb 8 Oz	Cheesecake Reese's Peanut Butter Cup 9"
50605394	2/6 Lb 7 Oz	Cheesecake White Chocolate Raspberry



## CANNED DESERTS

65003017	6/#10 Cans	Pudding Chocolate ( <i>Gehl's</i> )
65003020	6/#10 Cans	Pudding Tapioca ( <i>Gehl's</i> )
65003019	6/#10 Cans	Pudding Vanilla ( <i>Gehl's</i> )



## BEVERAGES

60000237	35/16.9 Oz	Water ( <i>Nirvana</i> )
----------	------------	--------------------------

## FROZEN - BAKERY

75209550	12/6 Pk	Bagel Plain Sliced 3 Oz
75209555	12/6 Pk	Bagel Plain Sliced 4 Oz
50606006	8/32 Oz	Bread Marble Rye ( <i>Bun Basket</i> )
50606001	8/16 Oz	Bread White Sourdough ( <i>Ralcorp</i> )
50005075	12/9 Pk	Breadsticks Seasoned ( <i>Bella Mia</i> )
50606045	144/1.28 Oz	Dinner Rolls Assorted ( <i>Bun Basket</i> )
50007500	12/6 Ct	English Muffins ( <i>Steck's</i> )
50002161	188/.8 Oz	French Toast Sticks ( <i>Krusteaz</i> )
50002163	144/1.4 Oz	Golden Waffles ( <i>Krusteaz</i> )
50606015	10/12 Ct	Hamburg Rolls Plain ( <i>Bun Basket</i> )
50605992	5/12 Pk	Hamburger Rolls Italian ( <i>Amoroso's</i> )
50605991	48/10"	Hoagie Rolls Sliced ( <i>Amoroso's</i> )





**Smith Packing Company**  
 105 - 125 Washington Street ~ Utica, NY 13502  
 Phone: (315) 732-5125 ~ Fax: (315) 732-5129  
[www.smithpacking.com](http://www.smithpacking.com)



**FROZEN - BAKERY**

50605990	72/6"	Hoagie Rolls Sliced ( <b>Amoroso's</b> )
50605993	60/12"	Hoagie Rolls Unsliced ( <b>Amoroso's</b> )
50605994	60/7"	Hoagie Rolls Unsliced ( <b>Amoroso's</b> )
50606011	18/8 Ct	Hot Dog Rolls Plain ( <b>Bun Basket</b> )
50606025	6/12 Ct	Kaiser Roll Plain 4.5 " ( <b>Bun Basket</b> )
50002164	144/1.25 Oz	Pancakes Buttermilk ( <b>Krusteaz</b> )
50005070	6/2 Pk	Pizza Kit w/ Pepperoni ( <b>Bella Mia</b> )
50005055	6/4 Pk	Pizza Shells 12" ( <b>Bella Mia</b> )
50005060	6/3 Pk	Pizza Shells 14" ( <b>Bella Mia</b> )
50005065	6/3 Pk	Pizza Shells 16" ( <b>Bella Mia</b> )
50005050	4/2 Pk	Pizza Shells 24" Sheets ( <b>Bella Mia</b> )
50606047	4/24 Ct	Rolls Artisan Assorted ( <b>Panne Provincio</b> )
50606009	48/4.5 Oz	Rolls Ciabatta Organic ( <b>Panne Provincio</b> )
50606035	8/4 Pk	Rolls Sub 12" ( <b>Ralcorp</b> )
50007507	6/1 Doz	Wraps, DARK SPINACH 12" ( <b>Father Sam's</b> )
50007505	6/1 Doz	Wraps, PESTO 12" ( <b>Father Sam's</b> )
50007510	6/1 Doz	Wraps, TOMATO 12" ( <b>Father Sam's</b> )
50007511	6/1 Doz	Wraps, WHEAT 12" ( <b>Father Sam's</b> )
50007504	6/1 Doz	Wraps, WHITE 12" ( <b>Father Sam's</b> )



**CANNED GOODS**

40062071	6/#10 Can	Applesauce ( <b>Celebrity</b> )
40050505	6/3 Kg	Artichokes 30/40 Ct ( <b>Del Destino</b> )
40050010	6/#10 Cans	Beans Baked ( <b>Bush's</b> )
40050020	6/#10 Cans	Beans Great Northern ( <b>Bush's</b> )
40050040	6/#10 Cans	Beans Kidney Dark Red ( <b>Bush's</b> )
50104550	12/46 Oz	Clam Juice Ocean ( <b>Seawatch</b> )
65021010	6/#10 Cans	Corned Beef Hash ( <b>Silver Skillet</b> )
40062070	6/#10 Can	Fruit Cocktail ( <b>Celebrity</b> )
40062073	6/#10 Can	Fruit Salad Tropical ( <b>Celebrity</b> )
65001141	4/1 Gal	Giardinera ( <b>Tutino's</b> )
40050501	6/68 Oz	Mushrooms Stem & Pieces ( <b>Celebrity</b> )





**Smith Packing Company**  
 105 - 125 Washington Street ~ Utica, NY 13502  
 Phone: (315) 732-5125 ~ Fax: (315) 732-5129  
[www.smithpacking.com](http://www.smithpacking.com)



**CANNED GOODS**

- 65001004 6/#10 Can Olives Black Medium Pitted (*Del Destino*)
- 65001003 6/#10 Can Olives Black Sliced (*Del Destino*)
- 40062065 6/#10 Can Oranges Mandarin Whole (*Celebrity*)
- 40062050 6/#10 Can Peaches Sliced (*Celebrity*)
- 40050525 6/#10 Can Pepper strips Red & Green (*Del Destino*)
- 65001140 4/1 Gal Pepperoncini (*Tutino's*)
- 65001148 1/5 Gal Pail Pickles Kosher Dill Chip -KK 500 Ct (*Honest John's*)
- 65001150 1/5 Gal Pail Pickles Kosher Dill Spears 220 Ct (*Honest John's*)
- 65001153 1/5 Gal Pail Pickles Kosher Dill Spears 400 Ct (*Honest John's*)
- 65001149 1/5 Gal Pail Pickles Kosher Dill Whole 50/60 Ct (*Honest John's*)
- 40062072 6/#10 Can Pineapple Tidbits (*Celebrity*)
- 40051200 6/#10 Cans Pizza Sauce (*Don Pepino*)
- 40050580 6/#10 Cans Roasted Peppers Sweet (*Gem*)
- 40051521 6/10 Lb Pouch Sauce Marinara Old California (*San Benito*)
- 40051512 6/#10 Can Sauce Pizza w/ Basil Heavy (*San Benito*)
- 40051510 6/#10 Can Tomato Puree- Extra Heavy (*San Benito*)
- 40051508 6/#10 Can Tomatoes Crushed Pear Heavy Concentrated (*San Benito*)
- 40051502 6/#10 Can Tomatoes Whole Pear in Juice (*San Benito*)
- 30000396 6/43 Oz Tuna chunk light (Pouch) Skip Jack (*Celebrity*)
- 30000389 6/66.5 Oz Tuna Chunk Light Yellow Fin (*Celebrity*)
- 30000396 6/66.5 Oz Tuna Chunk Lite In Water Skip Jack (*Celebrity*)
- 30000389 6/66.5 Oz Tuna Chunk Lite In Water Yellow Fin (*Celebrity*)

**Del Destino**



**CONDIMENTS, OILS, DRESSINGS & MORE...**

- 65002400 4/1 Gal BBQ Sauce (*Open Pit*)
- 65002401 4/1 Gal BBQ Sauce Original (*Cattlemen's*)
- 45001020 30/1 Lb Butter Blend
- 65002260 4/1 Gal Dressing 1000 Island (*Admiration*)
- 65002220 4/1 Gal Dressing Blue Chse (*Admiration*)
- 65002290 4/1 Gal Dressing French (*Admiration*)
- 65002250 4/1 Gal Dressing Golden Italian (*Admiration*)
- 65002230 4/1 Gal Dressing Italian (*Admiration*)
- 65002270 4/1 Gal Dressing Ranch (*Admiration*)





**Smith Packing Company**  
 105 - 125 Washington Street ~ Utica, NY 13502  
 Phone: (315) 732-5125 ~ Fax: (315) 732-5129  
[www.smithpacking.com](http://www.smithpacking.com)



**CONDIMENTS, OILS, DRESSINGS & MORE...**

- 65002275    4/1 Gal    Dressing Raspberry Vinegarette (*Admiration*)
- 65002280    4/1 Gal    Dressing Russian (*Admiration*)
- 60011500    16 Oz Jar    Horseradish Fully Prepared (*Smith*)
- 60011500    32 Oz Jar    Horseradish Fully Prepared (*Smith*)
- 65002500    4/1 Gal    Hot Sauce (*Frank's*)
- 40051353    6/#10 Cans    Ketchup 33% (*Red Gold*)
- 65011000    24/14 Oz    Ketchup Bottles (*Heinz*)
- 65011020    6/114 Oz    Ketchup Jugs (*Heinz*)
- 65011040    1/28.5 Lb    Ketchup Vol-Pack (*Heinz*)
- 45001057    2/17.5 Lb    Margarine Liquid
- 45001000    30/1 Lb    Margarine Solids
- 65002300    4/1 Gal    Mayonnaise (*Admiration*)
- 65002350    4/1 Gal    Mayonnaise (*Hellman's*)
- 65002700    4/1 Gal    Mustard Yellow (*Admiration*)
- 65002702    12/12 Oz    Mustard Yellow Squeeze Bottles (*French's*)
- 65000520    1/35 Lb    Oil Clear Fry (*Admiration*)
- 65000525    1/35 Lb    Oil Creamy Fry (*Admiration*)
- 65000500    1/35 Lb    Oil Soy (*Admiration*)
- 65000625    6/1 Gal    Olive Oil 10%
- 65000630    6/1 Gal    Olive Oil Extra Virgin
- 65000640    6/1 Gal    Olive Oil Pomace (Tin)
- 65001180    4/1 Gal    Relish Sweet Green (*Admiration*)
- 60000058    1/25 Lb Bag    Sugar Granulated (*Domino*)
- 60000059    1/2000 Ct    Sugar Packet
- 65002210    4/1 Gal    Tartar Sauce (*Admiration*)
- 65000920    6/14 Oz    Vegalene Coating Aerosol Cans (*Golbon*)
- 65002652    4/1 Gal    Vinegar - BALSAMIC
- 65002655    4/1 Gal    Vinegar - CIDER
- 65002651    4/1 Gal    Vinegar - RED WINE
- 65002650    4/1 Gal    Vinegar - WHITE





# Smith Packing Company

105 - 125 Washington Street ~ Utica, NY 13502

Phone: (315) 732-5125 ~ Fax: (315) 732-5129

[www.smithpacking.com](http://www.smithpacking.com)



PRESIDENT'S "E" AWARD  
For Excellence in Exporting

## DRY GOODS

60003113	1/25 Lb	Bread Crumbs - Panko Japanese ( <i>Golden Dipt</i> )
60003122	6/4 Lb	Bread Crumbs - Seasoned ( <i>Golden Dipt</i> )
60003111	1/50 Lb	Breader Dustless ( <i>Golden Dipt</i> )
60003110	6/5 Lb	Breading - Seasoned Bags ( <i>Golden Dipt</i> )
65021000	150/1 Pc	Crackers Large Oyster 1/2 Oz Pkgs ( <i>Westminster</i> )
60001400	10/1 Lb	Croutons Cheese & Garlic
60004130	2/25 Lb	Flour H & R ( <i>Pillsbury</i> )
60004120	1/50 Lb	Flour High Gluten
60004175	6/5 Lb	Pancake Mix Buttermilk Complete ( <i>Golden Dipt</i> )
60000065	6/16 Oz	Potato Chips Rippled ( <i>Uncle Ray's</i> )
60003115	6/5 Lb	Pre-Dip AP Batter Pre-Wash ( <i>Golden Dipt</i> )
60001500	1/25 Lb Bag	Rice ( <i>Uncle Ben's</i> )



## GRAVY

60002099	6/1 Lb	Beef Base Savory Gold Label ( <i>Custom</i> )
60002100	6/1 Lb	Chicken Base Savory Gold Label ( <i>Custom</i> )
60001630	8/16 Oz	Gravy Brown ( <i>Custom</i> )
60002090	8/16 Oz	Gravy Chicken ( <i>Custom</i> )
60001633	6/24 Oz	Gravy Country ( <i>Custom</i> )
60001625	8/16 Oz	Gravy Pork ( <i>Custom</i> )
60001620	8/16 Oz	Gravy Turkey ( <i>Custom</i> )



## PASTA - BOXED

60001065	20/1 Lb	Pasta - Elbows ( <i>Marino</i> )
60001020	20/1 Lb	Pasta - Fettuccini ( <i>Marino</i> )
60001015	20/1 Lb	Pasta - Linguine ( <i>Marino</i> )
60001045	20/1 Lb	Pasta - Penne Ziti ( <i>Marino</i> )
60001050	20/1 Lb	Pasta - Rigatoni ( <i>Marino</i> )
60001000	20/1 Lb	Pasta - Spaghetti Regular ( <i>Marino</i> )
60001043	20/1 Lb	Pasta - Ziti ( <i>Marino</i> )

# Del Destino

## SPICES

60011240	1/6.5 Oz Btl	Basil Leaves ( <i>Smith</i> )
60011005	1/16 Oz Btl	Black Pepper ( <i>Smith</i> )
60011056	1/16 Oz Btl	Cayenne Pepper ( <i>Smith</i> )
60011340	1/18 Oz Btl	Chili Power ( <i>Smith</i> )
60011330	1/16 Oz Btl	Cinnamon Ground ( <i>Smith</i> )
60011105	1/20 Oz Btl	Granulated Garlic ( <i>Smith</i> )





# Smith Packing Company

105 - 125 Washington Street ~ Utica, NY 13502

Phone: (315) 732-5125 ~ Fax: (315) 732-5129

[www.smithpacking.com](http://www.smithpacking.com)



PRESIDENT'S "E" AWARD  
For Excellence in Exporting

## DRY GOODS

### SPICES

60011170	1/22 Oz Btl	Granulated Onion <b>(Smith)</b>
60011150	1/16 Oz Btl	Onion Powder <b>(Smith)</b>
60011200	1/16.25 Oz Btl	Oregano Whole Greek <b>(Smith)</b>
60011260	1/16 Oz Btl	Paprike Dark Red <b>(Smith)</b>
60011230	1/4 Oz Btl	Parsley Flakes <b>(Smith)</b>
60011032	1/16 Oz Btl	White Pepper <b>(Smith)</b>



## DAIRY - BUTTER

45002020	1/8 Lb	Butter Cups 90 Ct <b>(Cabot)</b>
45002002	36/1 Lb	Butter Soilds <b>(Cabot)</b>
45002003	36/1 Lb	Butter Soilds Unsalted <b>(Cabot)</b>



## DAIRY/DELI - CHEESE

45000020	6/5 Lb	American Cheese White Block Food Service <b>(Land O' Lakes)</b>
45000021	6/5 Lb	American Cheese White Block Retail <b>(Land O' Lakes)</b>
45000022	6/5 Lb	American Cheese White Slices 120 Ct <b>(Land O' Lakes)</b>
45000023	6/5 Lb	American White Cheese Slices 160 Ct <b>(Land O' Lakes)</b>
45000350	1/5 Lb	Blue Cheese Crumbles <b>(Stella)</b>
45000043	4/5 Lb	Cheddar Cheese Shredded Jack
45000044	4/5 Lb	Cheddar Cheese Shredded White
45000046	4/5 Lb	Cheddar Cheese Shredded Yellow
45000156	6/24 Oz	Cheddar Extra Sharp <b>(McCadam)</b>
45000150	1/10 Lb Ave	Cheddar NYS Sharp Square <b>(Cabot)</b>
45000145	1/42 Lb Ave	Cheddar NYS Sharp Square <b>(Cabot)</b>
45000153	6/24 Oz	Cheddar Sharp <b>(McCadam)</b>
45000140	1/10 Lb Ave	Horseradish Cheese X-Sharp Block <b>(McCadam)</b>
45000050	8/6 Lb	Mozzerella Whole Milk Brick <b>(Sorrento)</b>
45000052	6/5 Lb	Mozzerella Whole Milk Low Moisture <b>(Sorrento)</b>
45000049	6/5 Lb	Mozzerella Whole Milk Shredded <b>(Sorrento)</b>
45000170	6/6 Lb Ave	Muenster Cheese <b>(Cabot)</b>
45000335	1/5 Lb	Parmesan Grated <b>(Andolina)</b>





**Smith Packing Company**  
 105 - 125 Washington Street ~ Utica, NY 13502  
 Phone: (315) 732-5125 ~ Fax: (315) 732-5129  
[www.smithpacking.com](http://www.smithpacking.com)



## DAIRY/DELI - CHEESE

45000330	1/5 Lb	Pecorino Romano Grated ( <i>Andolina</i> )
45000340	1/11.5 Lb Ave	Provolone Cheese ( <i>Sorrento</i> )
45000109	2/8 Lb Ave	Swiss Cheese "A" ( <i>Brewster</i> )
65003010	4/140 Oz	Cheese Sharp Sauce Bag ( <i>Gehl's</i> )
65003011	4/140 Oz	Jalapeno Cheese Bag ( <i>Gehl's</i> )



## DAIRY - EGGS

45502030	30 Dozen	Eggs Fresh Medium - <u>CARTON</u> ( <i>Skyline</i> )
45402015	15 Dozen	Eggs Fresh Medium - <u>LOOSE</u> ( <i>Skyline</i> )
45402030	30 Dozen	Eggs Fresh Medium - <u>LOOSE</u> ( <i>Skyline</i> )
45503020	18 Dozen	Eggs Fresh Large - <u>CARTON</u> ( <i>Skyline</i> )
45503030	30 Dozen	Eggs Fresh Large - <u>CARTON</u> ( <i>Skyline</i> )
45403015	15 Dozen	Eggs Fresh Large - <u>LOOSE</u> ( <i>Skyline</i> )
45403030	30 Dozen	Eggs Fresh Large - <u>LOOSE</u> ( <i>Skyline</i> )
45504030	30 Dozen	Eggs Fresh X Large - <u>CARTON</u> ( <i>Skyline</i> )
45404015	15 Dozen	Eggs Fresh X Large - <u>LOOSE</u> ( <i>Skyline</i> )
45404030	30 Dozen	Eggs Fresh X Large - <u>LOOSE</u> ( <i>Skyline</i> )



## DAIRY - MISCELLANEOUS

45000012	1/5 Lb	Cottage Cheese ( <i>Cabot or Byrne Dairy</i> )
45000002	12/1 Qt	Half & Half ( <i>Byrne Dairy</i> )
45000001	1/400 Ct	Half & Half 3/8 Oz ( <i>Byrne Dairy</i> )
45000003	12/1 Qt	Heavy Cream ( <i>Byrne Dairy</i> )
45000009	4/1 Gal	Milk 2% ( <i>Byrne Dairy</i> )
45000015	4/1 Gal	Milk Low Fat Chocolate ( <i>Byrne Dairy</i> )
45000008	4/1 Gal	Milk Skim ( <i>Byrne Dairy</i> )
45000010	4/1 Gal	Milk Whole ( <i>Byrne Dairy</i> )
45000004	1/5 Lb	Sour Cream ( <i>Cabot or Byrne Dairy</i> )







**Smith Packing Company**  
 105 - 125 Washington Street ~ Utica, NY 13502  
 Phone: (315) 732-5125 ~ Fax: (315) 732-5129  
[www.smithpacking.com](http://www.smithpacking.com)



**DELI - SALADS & DESSERTS (SEASONAL)**

- 45000623     2/5 Lb     Anti-Pasto Salad Base
- 45000611     2/5 Lb     Barbeque Baked Beans
- 45000617     2/5 Lb     Beet & Onion Salad
- 45000642     2/5 Lb     Chicken Fra Diavlo
- 45000632     2/5 Lb     Chicken Salad
- 45000515     2/5 Lb     Chicken Salad ~ Buffalo
- 45000540     2/5 Lb     Chicken Salad ~ Cranberry Walnut
- 45000614     2/5 Lb     Chicken Salad ~ White Meat
- 45000525     2/5 Lb     Cole Slaw
- 45000607     2/5 Lb     Cole Slaw ~ Country Style
- 45000649     2/5 Lb     Cole Slaw ~ Creamy Chopped
- 45000630     2/5 Lb     Cuban Black Bean
- 45000550     2/5 Lb     Egg Salad Deluxe
- 45000555     2/5 Lb     Four Bean Salad
- 45000560     2/5 Lb     Ham Salad ~ Deluxe
- 45000624     2/5 Lb     Italian Tomato Salad
- 45000644     2/5 Lb     Macaroni & Beef
- 45000626     2/5 Lb     Macaroni Cheddar
- 45000601     2/5 Lb     Macaroni Salad
- 2/5 Lb     Marinated Artichoke Salad
- 45000616     2/5 Lb     Marinated Cucumber Salad
- 45000618     2/5 Lb     Marinated Mushrooms
- 45000619     2/5 Lb     Marinated Olive Salad
- 45000638     2/5 Lb     Marinated Roasted Red Peppers
- 45000608     2/5 Lb     Oriental Noodle
- 45000585     2/5 Lb     Pasta Primavera
- 45000625     2/5 Lb     Pasta Salad ~ Cheese Tortellini
- 45000637     2/5 Lb     Pasta Salad ~ Creamy Italiano
- 45000610     2/5 Lb     Pasta Salad ~ Greek
- 45000603     2/5 Lb     Pasta Salad ~ Pesto Tortellini
- 45000631     2/5 Lb     Pasta Salad ~ Spinesto
- 45000622     2/5 Lb     Potato & Egg
- 45000595     2/5 Lb     Potato ~ German
- 45000604     2/5 Lb     Potato ~ Redskin





**Smith Packing Company**  
 105 - 125 Washington Street ~ Utica, NY 13502  
 Phone: (315) 732-5125 ~ Fax: (315) 732-5129  
[www.smithpacking.com](http://www.smithpacking.com)



**DELI - SALADS & DESSERTS (SEASONAL)**

45000606	2/5 Lb	Potato Salad
45000602	2/5 Lb	Potato Salad ~ Idaho Baked
45000648	2/5 Lb	Sausages, Peppers, and Onions
45000605	2/5 Lb	Seafood Salad
45000621	2/5 Lb	Shrimp & Seafood Salad
45000615	2/5 Lb	Tomato Mozzarella Salad - <b>Summer ONLY</b>
45000590	2/5 Lb	Tuna Salad
45000645	1/6 Lb	Apple Crisp
45000647	1/6 Lb	Blueberry Crisp
45000646	1/6 Lb	Bread Pudding
45000629	2/5 Lb	Fruit Ambrosia
45000580	2/4 Lb	Rice Pudding



**FRIED FOODS - APPETIZERS (FROZEN)**

50002125	6/2 Lb	Cauliflower Battered ( <b>Fry Foods</b> )
50002146	6/4 Lb	J-Bombs Jalapeno/ Cheddar Cheese ( <b>Fry Foods</b> )
50002144	6/4 Lb	J-Bombs Jalapeno/Cream Cheese ( <b>Fry Foods</b> )
50002100	6/2 Lb	Mozzarella Sticks Battered ( <b>Fry Foods</b> )
50002150	6/2 Lb	Mushrooms Battered ( <b>Fry Foods</b> )
50002110	4/2.5 Lb	Onion Rings Battered Steak Cut ( <b>Fry Foods</b> )
50002130	6/2 Lb	Zucchini Stix Battered ( <b>Fry Foods</b> )



**FROZEN POTATOES**

50000051	6/5 Lb	French Fries 1/2" Crinkle Cut ( <b>Golbon</b> )
50000054	6/5 Lb	French Fries 3/8" Straight Cut ( <b>Golbon</b> )
50001030	6/6 Lb	French Fries 3/8" X 5/16" ( <b>Premium Harvest</b> )
50001050	6/4.5 Lb	French Fries Conquest Shoe String 1/4" ( <b>Simplot</b> )
50000010	6/4.5 Lb	French Fries Jiffi Crisp Skin On 3/8" ( <b>Simplot</b> )
50000009	6/5 Lb	French Fries Savory Crispy Loop ( <b>Simplot</b> )
50001000	6/4.5 Lb	French Fries Shoe String ( <b>Golbon</b> )
50000008	6/5 Lb	French Fries Skin On ( <b>ML Signature</b> )





# Smith Packing Company

105 - 125 Washington Street ~ Utica, NY 13502

Phone: (315) 732-5125 ~ Fax: (315) 732-5129

[www.smithpacking.com](http://www.smithpacking.com)



PRESIDENT'S "E" AWARD  
For Excellence in Exporting

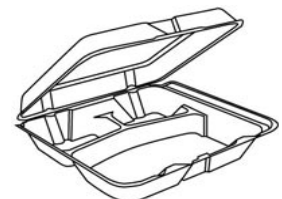
## FROZEN POTATOES

50000015	6/5 Lb	French Fries Skin On 3/8" ( <i>Simplot</i> )
50000042	6/5 Lb	French Fries Steak ( <i>Golbon</i> )
50001075	6/2.5 Lb	French Fries Sweet Potato ( <i>Simplot</i> )
50000006	6/5 Lb	French Fry Conquest Straight 3/8" ( <i>Simplot</i> )
50000019	6/6 Lb	Potato Diced Cubed Skincredibles ( <i>Simplot</i> )
40021080	6/2.5 Lb	Potatoes Baby Bakers Roastworks ZGTF ( <i>Simplot</i> )
60023105	12/26 Oz	Potatoes Idahoan Mashed ( <i>Simplot</i> )



## PAPER PRODUCTS

55485000	1/1000 Ct	Foam Cup White 8 Oz ( <i>Dart</i> )
55412000	1/1000 Ct	Foam Cup White 12 Oz ( <i>Dart</i> )
55416000	1/1000 Ct	Foam Cup White 16 Oz ( <i>Dart</i> )
55340010	1/500 Ct	Foam Cup White 20 Oz ( <i>Dart</i> )
55415999	1/1000 Ct	Lift-Lock & Straw Slot Lid ( <i>Dart</i> )
60000020	20/50 Ct	Cup Fusion 12 Oz ( <i>Dart</i> )
60000021	20/40 Ct	Cup Fusion 16 Oz ( <i>Dart</i> )
60000022	20/25 Ct	Cup Fusion 20 Oz ( <i>Dart</i> )
60000023	20/25 Ct	Cup Fusion 24 Oz ( <i>Dart</i> )
55455140	1/1000 Ct	Lid, Black, Resealable ( <i>Dart</i> )
55330085	1/1000 Ct	Cup Foam Squat 8 Oz ( <i>Dart</i> )
55416183	1/500 Ct	Cup Foam Squat 12 Oz ( <i>Dart</i> )
55330165	1/500 Ct	Cup Foam Squat 16 Oz ( <i>Dart</i> )
55455020	1/1000 Ct	Lid, Vented Translucent ( <i>Dart</i> )
55420000	1/2500 Ct	Cup Souffle 2 Oz ( <i>Dart</i> )
55420200	1/2500 Ct	Lid Souffle for 2 Oz ( <i>Dart</i> )
55440000	1/2500 Ct	Cup Souffle 4 Oz ( <i>Dart</i> )
55404000	1/2500 Ct	Lid Souffle for 4 Oz ( <i>Dart</i> )
55782100	1/1000 Ct	Bowl Foam 12 Oz ( <i>Dart</i> )
55782037	1/500 Ct	Plate Foam 1-Compartment 10.25" ( <i>Dart</i> )
55782009	1/500 Ct	Plate Foam 1-Compartment 9" ( <i>Dart</i> )



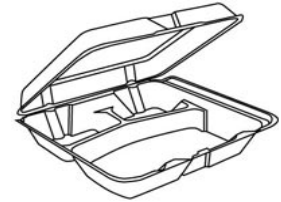


**Smith Packing Company**  
 105 - 125 Washington Street ~ Utica, NY 13502  
 Phone: (315) 732-5125 ~ Fax: (315) 732-5129  
[www.smithpacking.com](http://www.smithpacking.com)



## PAPER PRODUCTS

55782015	1/500 Ct	Plate Foam 3-Compartment 9" <b>(Dart)</b>
55782006	1/1000 Ct	Plate Foam 6" <b>(Dart)</b>
55120005	1/200 Ct	Container Foam 1-Compartment 8x8 <b>(Dart)</b>
55120011	1/200 Ct	Container Foam 1-Compartment 9x9 <b>(Dart)</b>
55121900	1/200 Ct	Container Foam All Purpose 9x6 <b>(Dart)</b>
55121901	1/200 Ct	Container Foam Hoagie 9x5 <b>(Dart)</b>
55122500	1/500 Ct	Container Foam Hinged 6x6 <b>(Dart)</b>
55124999	1/200 Ct	Container Foam 3-Compartment 10x10 <b>(Dart)</b>
55125000	1/200 Ct	Container Foam 1-Compartment 10x10 <b>(Dart)</b>
55662002	1/200 Ct	Container Foam 3-Compartment 9x9 <b>(Dart)</b>
55117560	1/500 Ct	Container Clear Hinged 6x6 <b>(Dart)</b>
55323211	1/250 Ct	Container Clear Hinged 8x8 <b>(Dart)</b>
55323212	1/200 Ct	Container Clear Hinged 9x9 <b>(Dart)</b>
55510100	1/4000 Ct	Napkin Beverage 1 Ply <b>(Cascades)</b>
55515150	1/3000 Ct	Napkin Dinner 2-ply 15x17 1/8 fold <b>(Cascades)</b>
55512110	12/500 Ct	Napkin Lunch 1-ply 1/4 fold <b>(Cascades)</b>
55540725	1/80 Ct	Tissue Toilet Décor 1 Ply <b>(Cascades)</b>
55540726	1/80 Ct	Tissue Toilet Fluffy 2 Ply 550 Sheets <b>(Cascades)</b>
55540999	1/4000 Ct	Towel Brown Single Fold <b>(Cascades)</b>
55541000	1/30 Ct	Towel Kitchen Roll Towel 2 Ply <b>(Cascades)</b>
55541001	1/12 Ct	Towel Natural 8" <b>(Cascades)</b>
55800009	1/1000 Ct	Bag Clear Poly 6 x 3 x 12
55800008	1/1000 Ct	Bag Clear Poly 6 x 3 x 15
55800007	1/1000 Ct	Bag Clear Poly 8 x 4 x 18
55800002	1/1000 Ct	Bag Thank You High Density
55800011	1/250 Ct	Liner Black 33 x 39 33 Gal 1.5 MIL
55838595	1/100 Ct	Liner Black 38 x 58 60 Gal
55838500	1/1000 Ct	Liner Clear 24 x 31 16 Gal .35 MIL





**Smith Packing Company**  
 105 - 125 Washington Street ~ Utica, NY 13502  
 Phone: (315) 732-5125 ~ Fax: (315) 732-5129  
[www.smithpacking.com](http://www.smithpacking.com)



## PAPER PRODUCTS

55840471	1/500 Ct	Liner Clear 33 x 40 33 Gal 13 MIC
55838605	1/100 Ct	Liner Clear 36 x 58 60 Gal 1.2 MIL
55838550	1/100 Ct	Liner Clear 36 x 59 55 Gal 2 MIL
55838600	1/150 Ct	Liner Clear 36 x 60 60 Gal 24 MIC
55830369	1/125 Ct	Liner Clear 40 x 46 45 Gal 1.1 MIL
55840470	1/250 Ct	Liner Clear 40 x 48 45 Gal 16 MIC
55624000	1/500 Ft	Foil Aluminum 18" ( <b>Reynolds</b> )
55661100	1/1000 Ft	Foil Aluminum 12"
55661400	1/500 Ft	Foil Aluminum 18"
55323230	1/50 Ct	Steam Pan - FULL
55662004	1/100 Ct	Steam Pan - 1/2
55691000	1/2000 Ft	Wrap Plastic 12"
55691400	1/2000 Ft	Wrap Plastic 18"
55691005	1/1000 Ft	Wrap Plastic 12"



## GLOVES

55810010	10/100 Ct	Glove Latex X-Large Pre-Powdered
55810011	10/100 Ct	Glove Latex Large Pre-Powdered
55810009	10/100 Ct	Glove Latex Medium Pre-Powdered
55810013	10/100 Ct	Glove Latex <b>Powder Free</b> Large
55810004	10/100 Ct	Glove Latex <b>Powder Free</b> Medium
55810002	10/100 Ct	Glove Poly Large
55810012	10/100 Ct	Glove Poly Medium
55810018	10/100 Ct	Glove Vinyl Large Pre-Powdered
55810016	10/100 Ct	Glove Vinyl Medium Powder Free
55810017	10/100 Ct	Glove Vinyl Medium Pre-Powdered
55810008	10/100 Ct	Glove Vinyl Small Powder Free
55810007	10/100 Ct	Glove Vinyl Small Pre-Powdered
55810001	10/100 Ct	Glove Vinyl X-Large Powder Free
55810006	10/100 Ct	Glove Vinyl X-Large Pre-Powdered
55810005	10/100 Ct	Gloves Vinyl Large Power Free





**Smith Packing Company**  
 105 - 125 Washington Street ~ Utica, NY 13502  
 Phone: (315) 732-5125 ~ Fax: (315) 732-5129  
[www.smithpacking.com](http://www.smithpacking.com)



## CLEANING SUPPLIES

55001021	1/6 Pc	Cleaner ~ 1 Gal Quick Suds, 1 Gal Big Red, 1 Gal Forest Pine, 2 Qt Glass, 2 Qt KO-1 <b>(Reliable)</b>
58001074	4/1 Gal	Cleaner All Purpose KO-1 <b>(Reliable)</b>
58001075	12/32 Oz	Cleaner All Purpose KO-1 <b>(Reliable)</b>
58001050	4/1 Gal	Cleaner Big Red Oven/Grill
57180300	6/1 Gal	Cleaner Bleach
58003013	2/1 Gal	Cleaner Floor Traction Quarry <b>(Aqua Solutions )</b>
58001060	4/1 Gal	Cleaner Forest Pine
58003010	4/1 Gal	Cleaner Oven & Grill Pex Carb <b>(Aqua Solutions )</b>
58003008	4/1 Gal	Cleaner Pot & Pan Blue Fome-HD <b>(Aqua Solutions )</b>
58001045	4/1 Gal	Degreaser Big D
58003011	4/1 Gal	Descaler Acidic Eliminate <b>(Aqua Solutions )</b>
58003016	6/1 Qt	Sanitizer 200 Contact <b>(Aqua Solutions )</b>
58001020	4/1 Gal	Soap Dish Quick Suds Blue Premium
58001000	4/1 Gal	Soap Hand Pink Star
58001025	4/1 Gal	Soap Pot & Pan Mighty Suds Pink



**NOTE: IF YOU DON'T SEE IT IN THIS BOOK  
 ASK YOUR SALES REPRESENTATIVE**