

# Eaton 9130 UPS



## Product snapshot

- Product rating:** 700 to 3000 VA  
**Voltage** 120 Vac, 208–240V  
**Frequency:** 50/60 Hz  
(auto-sensing)  
**Configuration:** Rackmount or tower

Advanced power protection for:

- IT and networking environments
- Servers, networking gear
- Telecommunications, VoIP, security systems
- Medical systems
- Diagnostics and medical screening
- Patient record archives
- Manufacturing systems
- Chip fabrication
- Pharmaceutical production
- Chemical processing

## Features

- Protects against downtime, data loss and process interruption by providing continuous, clean power
- Offers premium performance with a 0.9 power factor and >95 percent efficiency in high efficiency mode
- Increases battery service life and system uptime with ABM® battery charging technology
- Enables prolonged runtime of essential equipment during power outages by allowing for orderly, remote shutdown of non-critical systems or processes
- Provides installation flexibility with a choice of rack or tower designs, both conserving valuable space
- Ensures data and system integrity with LanSafe® power management software
- Provides a two-year limited warranty, an extended warranty, on-site Flex™ and on-site PowerTrust™ service contracts, and a \$250,000 load protection guarantee (US and Canada)

The **Eaton® 9130 UPS**, resolves utility power problems and delivers superior power protection for IT and networking equipment, medical systems, manufacturing process control—or anywhere critical equipment and applications require clean, continuous power.

Every organization is concerned about being “green,” saving energy, cutting costs. The 9130 makes the best use of every utility dollar. It runs efficiently, dissipates less heat and saves thousands of dollars a year in power and cooling.

## Double-conversion design for superior power protection

The 9130 is constantly monitoring power conditions—regulating both voltage and frequency. Even when presented with the most severe power problems, this UPS’s output remains within three percent of nominal voltage.

With a wide input voltage range, the 9130 does not depend on batteries to smooth out minor power fluctuations. Batteries are conserved for those times when utility power is highly unstable or completely out. If an outage occurs, the 9130 transfers to battery with zero interruption in power, making this an ideal UPS for sensitive and critical equipment.



Powering Business Worldwide

## More real power for less cost

**More real power.** High 0.9 output power factor enables the 9130 to provide its full power capability to modern IT equipment that may have a wide range of leading and lagging power factors. With a 0.99 input power factor, this UPS avoids the disturbances that some energy converters tend to cause.

**High efficiency.** The more efficient the UPS, the lower your utility and cooling bills. Even a small increase in efficiency can quickly translate into thousands of dollars. When power conditions are within acceptable limits, the 9130 can operate in a remarkable high-efficiency mode: 95 percent efficient or higher.

## Advanced design and self-monitoring for premium availability

The 9130 continually monitors voltage, temperature, internal element functions, battery health, battery state-of-charge and runtime remaining. If the UPS detects a potential problem with any of these measures, it sends alarms or takes corrective action, with no interruption in power. At the end of an alarm condition, the 9130 automatically reverts from bypass to normal operation.

## Stronger, longer battery life with exclusive ABM technology

Most UPS manufacturers on the market today employ a constant 'trickle-charging' system, which can ultimately reduce potential battery service life by as much as 50 percent. In contrast, ABM technology uses sophisticated sensing circuitry and an innovative three-stage charging technique that significantly extends UPS batteries' useful service life while optimizing their recharge time.

The 9130 provides up to 60 days' notice of the end of useful battery service life. You have ample time to hot-swap batteries without ever having to shut down connected equipment.

## External battery modules for extended runtime

During a power outage, internal batteries in the 9130 keep loads running long enough to gracefully shut down systems. Add more runtime at any time, with up to four external battery modules to run systems for hours if necessary. These battery modules are hot-swappable and can be replaced at any time without powering down the UPS or protected loads. You can also start up the UPS and power its loads with battery power.

### Battery runtimes

#### Rack models

Load (VA/Watts)	Internal batteries	w/1 EBM	w/2 EBM	w/3 EBM	w/4 EBM
<b>PW9130L700R-XL2U</b>					
700/490	14	55	102	148	175
525/368	20	77	140	179	239
350/245	32	124	189	282	414
175/123	64	200	395	552	739

#### PW9130L1000R-XL2U

1000/700	10	40	73	108	149
750/525	13	58	101	152	219
500/350	24	85	172	249	304
250/175	48	190	310	451	569

#### PW9130G1000R-XL2U / XL2UEU / PW9130i1000R-XL2U

1000/700	10	40	78	110	150
750/525	13	55	103	151	223
500/350	22	82	186	250	312
250/175	47	190	328	431	584

#### PW9130L1500R-XL2U

1500/1050	7	34	63	88	135
1125/788	11	44	84	129	210
750/525	18	79	148	207	267
375/263	38	167	278	475	540

#### PW9130i1500R-XL2U

1500/1050	7	32	61	98	128
1125/788	11	47	83	126	195
750/525	18	81	143	208	262
375/263	38	171	298	416	564

#### PW9130L2000R-XL2U

2000/1400	9	45	86	124	163
1500/1050	14	66	115	165	225
1000/700	26	101	185	251	343
500/350	52	197	353	481	629

#### Rack models (cont.)

Load (VA/Watts)	Internal batteries	w/1 EBM	w/2 EBM	w/3 EBM	w/4 EBM
<b>PW9130G2000R-XL2U / PW9130G2000R-XL2UEU / PW9130i2000R-XL2U</b>					
2000/1400	9	46	83	118	163
1500/1050	13	64	118	170	221
1000/700	25	95	190	242	345
500/350	53	205	346	488	625

#### PW9130L2500R-XL2U

2500/2250	7	31	59	87	119
1875/1688	10	43	81	121	154
1250/1125	17	65	120	163	203
625/563	40	145	228	363	491

#### PW9130G2500R-XL2U / PW9130G2500R-XL2UEU

2500/2250	7	31	59	87	119
1875/1688	10	43	81	121	154
1250/1125	17	65	120	163	203
625/563	40	145	228	363	491

#### PW9130L3000R-XL2U

3000/2100	5	25	48	72	100
2250/1575	8	37	72	102	137
1500/1050	13	60	100	165	223
750/525	34	138	228	326	438

#### PW9130G3000R-XL2U / PW9130G3000R-XL2UEU / PW9130i3000R-XL2U

3000/2100	6	25	45	68	96
2250/1575	8	34	70	96	130
1500/1050	14	62	92	156	211
750/525	34	130	212	355	442

Note:

Backup times are approximate and may vary with equipment, configuration, battery age, temperature, etc. Runtimes are shown at a 0.7 power factor.

**Tower models**

Load (VA/Watts)	Internal batteries	w/1 EBM	w/2 EBM	w/3 EBM	w/4 EBM
<b>PW9130L700T</b>					
700/490	8	N/A	N/A	N/A	N/A
525/368	12	N/A	N/A	N/A	N/A
350/245	21	N/A	N/A	N/A	N/A
175/123	37	N/A	N/A	N/A	N/A

**PW9130i700T**

700/490	8	N/A	N/A	N/A	N/A
525/368	12	N/A	N/A	N/A	N/A
350/245	19	N/A	N/A	N/A	N/A
175/123	35	N/A	N/A	N/A	N/A

**PW9130L1000T-XL**

1000/700	10	40	73	108	149
750/525	13	58	101	152	219
500/350	24	85	172	249	304
250/175	48	190	310	451	569

**PW9130G1000T-XL / XLEU / PW9130i1000T-XL**

1000/700	10	40	78	110	150
750/525	13	55	103	151	223
500/350	22	82	186	250	312
250/175	47	190	328	431	584

**PW9130L1500T-XL**

1500/1050	7	34	63	88	135
1125/788	11	44	84	129	210
750/525	18	79	148	207	267
375/263	38	167	278	475	540

**Tower models (cont.)**

Load (VA/Watts)	Internal batteries	w/1 EBM	w/2 EBM	w/3 EBM	w/4 EBM
<b>PW9130i1500T-XL</b>					
1500/1050	7	32	61	98	128
1125/788	11	47	83	126	195
750/525	18	81	143	208	262
375/263	38	171	298	416	564

**PW9130L2000T-XL**

2000/1400	15	61	111	156	194
1500/1050	21	81	145	184	269
1000/700	34	129	198	293	410
500/350	72	225	449	590	766

**PW9130G2000T-XL / XLEU / PW9130i2000T-XL**

2000/1400	15	61	111	156	186
1500/1050	21	81	145	184	248
1000/700	34	129	198	293	431
500/350	72	225	449	590	840

**PW9130L3000T-XL**

3000/2100	9	35	66	95	132
2250/1575	13	53	100	139	183
1500/1050	22	86	153	221	267
750/525	69	168	298	395	545

**PW9130G3000T-XL / XLEU / PW9130i3000T-XL**

3000/2100	9	36	68	101	137
2250/1575	12	49	90	134	165
1500/1050	20	79	143	180	240
750/525	46	161	267	434	547

Note:

Backup times are approximate and may vary with equipment, configuration, battery age, temperature, etc.  
Runtimes are shown at a 0.7 power factor.

## Maximum battery run-time for critical systems

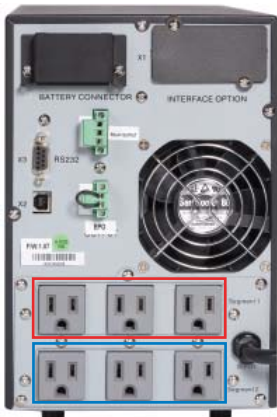
Using LanSafe power management software, you can independently control load segments, which are groups of receptacles on the rear panel of the UPS. This feature enables you to manage scheduled shutdowns and sequential startups of protected loads. During a power outage, you could shut down power to non-critical devices, thereby extending battery backup time available for critical devices. You can also use this feature to remotely re-boot locked-up equipment.

## Flexible deployment and communication options

**One platform, two form factors, dozens of choices.** Up to 3000 VA of UPS power is packed into only 2U of rack space. The tower option is about the size of a modern, compact PC, occupying only 1.5 square feet or less of footprint. Choose from dozens of models offering the input plug type and output receptacles that suit your needs and voltage.

**Monitor and manage the UPS from anywhere.** Connectivity options are available for almost any networking environment. The standard unit comes with USB and RS-232 serial communication ports. You can customize your UPS by adding BestDock interface options for other types of communications, such as to:

- Control and monitor UPS status and meters via SNMP or a Web browser
- Monitor and shut down multiple servers with different operating systems
- Send relay-contact alarm notifications to remote security systems



## Intuitive, visual UPS monitoring and management

**Local.** An on-site user can configure and monitor many features of the 9130 using a large, bright, backlit display with easy navigation—available in multiple languages. LEDs provide at-a-glance insight into system status.

**Remote.** The 9130 comes complete with the LanSafe suite of power management software that provides control and visibility over all your UPS systems, using an intuitive, graphical interface and SNMP.

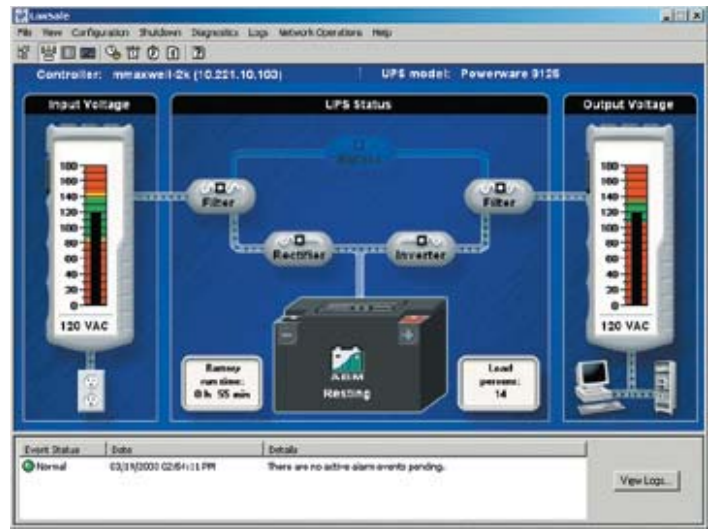
From a central vantage point, you have the visibility and control you need to ensure continuous up-time. For example, you can establish a prioritized shutdown of network devices and client/server applications, test all networked UPS systems from one node, analyze trends and network conditions, and stay informed of power problems by pager and e-mail.

The LanSafe software package also includes multimedia demonstrations and a free trial for you to explore optional software for UPS performance monitoring/analysis and facility/data-center management.

## Enhance your UPS with complementary options

Count on Eaton for comprehensive power quality and infrastructure solutions. You can complement your 9130 with options that create a more effective, manageable and resilient data center or facility. For example:

- A **maintenance bypass** enables power to completely bypass the UPS, so it can be safely serviced or replaced without powering down critical systems.
- Rugged and attractive **enclosures** provide well-organized rack space for data centers, wiring closets, office environments and warehouses.



## LanSafe answers network administrators' key questions with an intuitive visual display.

- Is input voltage within the acceptable range?
- If the power went out, how long could the UPS run on battery power?
- Is the UPS running on battery power right now?
- Are there any active events I need to know about?
- Is the UPS online or in bypass mode?
- Is output voltage within acceptable limits?
- What percent of UPS capacity is being used right now?
- Is the battery being charged or discharged?

## Eaton, your trusted ally for power quality

Representing more than 40 years of R&D excellence, the new 9130 delivers more real **power**—so you can power through any disruption and keep your organization's critical systems protected reliably and efficiently. Eaton will be there with you for the long term with premium warranty coverage and expert technical support.

**When you want maximum peace of mind,** count on Eaton's eNotify Remote Monitoring service. With this 7x24 service, our Customer Reliability Center (CRC) remotely monitors your UPS and contacts you in case of an emergency.

To find out more about the 9130 and other Eaton power quality solutions, visit our Web site at [www.powerware.com/9130](http://www.powerware.com/9130) or contact us at 1.800.356.5794.



Choose from various back panel configurations in either rack or tower models— all offer load segmentation.

**Rack models**

Catalog number	Style number	Rating (VA/Watts)	Input connection <sup>1</sup>	Output receptacles	Dimensions H x W x D, in (mm) <sup>2</sup>	Weight, lb (kg)
<b>North American rack models: 120V, 50/60 Hz</b>						
PW9130L700R-XL2U	103006447-6591	700/630	5-15P	(6) 5-15R	3.4 x 17.2 x 17.7 (87 x 438 x 450)	35.3 (16.0)
PW9130L1000R-XL2U	103006448-6591	1000/900	5-15P	(6) 5-15R	3.4 x 17.2 x 17.7 (87 x 438 x 450)	35.3 (16.0)
PW9130L1500R-XL2U	103006449-6591	1500/1350	5-15P	(6) 5-15R	3.4 x 17.2 x 17.7 (87 x 438 x 450)	43.0 (19.5)
PW9130L2000R-XL2U	103006450-6591	2000/1800	5-20P	(6) 5-15/20R, (1) L5-20R	3.4 x 17.2 x 23.6 (87 x 438 x 600)	63.9 (29.0)
PW9130L2500R-XL2U	103006451-6591	2500/2250	L5-30P	(6) 5-15/20R, (1) L5-30R	3.4 x 17.2 x 23.6 (87 x 438 x 600)	65.0 (29.5)
PW9130L3000R-XL2U	103006452-6591	3000/2700	L5-30P	(6) 5-15/20R, (1) L5-30R	3.4 x 17.2 x 23.6 (87 x 438 x 600)	65.0 (29.5)
<b>Global rack models: 208V, 50/60 Hz</b>						
PW9130G1000R-XL2U	103006461-6591	1000/900	L6-20P <sup>3</sup>	(1) L6-20R, (2) 6-20R	3.4 x 17.2 x 17.7 (87 x 438 x 450)	35.3 (16.0)
PW9130G2000R-XL2U	103006462-6591	2000/1800	L6-20P <sup>3</sup>	(1) L6-20R, (4) 6-20R	3.4 x 17.2 x 23.6 (87 x 438 x 600)	63.9 (29.0)
PW9130G2500R-XL2U	103006453-6591	2500/2250	L6-20P <sup>4</sup>	(1) L6-30R, (1) L6-20R, (2) 6-20R	3.4 x 17.2 x 23.6 (87 x 438 x 600)	65.0 (29.5)
PW9130G3000R-XL2U	103006454-6591	3000/2700	L6-20P <sup>4</sup>	(1) L6-30R, (1) L6-20R, (2) 6-20R	3.4 x 17.2 x 23.6 (87 x 438 x 600)	65.0 (29.5)
PW9130G1000R-XL2UEU	103006480-6591	1000/900	L6-20P <sup>3</sup>	(6) C13	3.4 x 17.2 x 17.7 (87 x 438 x 450)	35.3 (16.0)
PW9130G2000R-XL2UEU	103006481-6591	2000/1800	L6-20P <sup>3</sup>	(8) C13, (1) C19	3.4 x 17.2 x 23.6 (87 x 438 x 600)	63.9 (29.0)
PW9130G2500R-XL2UEU	103006482-6591	2500/2250	L6-20P <sup>4</sup>	(8) C13, (1) C19	3.4 x 17.2 x 23.6 (87 x 438 x 600)	65.0 (29.5)
PW9130G3000R-XL2UEU	103006483-6591	3000/2700	L6-20P <sup>4</sup>	(8) C13, (1) C19	3.4 x 17.2 x 23.6 (87 x 438 x 600)	65.0 (29.5)
<b>International rack models: 230V, 50/60 Hz</b>						
PW9130i1000R-XL2U	103006455-6591	1000/900	C14	(6) C13	3.4 x 17.2 x 17.7 (87 x 438 x 450)	35.3 (16.0)
PW9130i1500R-XL2U	103006456-6591	1500/1350	C14	(6) C13	3.4 x 17.2 x 17.7 (87 x 438 x 450)	43.0 (19.5)
PW9130i2000R-XL2U	103006457-6591	2000/1800	C14	(8) C13, (1) C19	3.4 x 17.2 x 23.6 (87 x 438 x 600)	63.9 (29.0)
PW9130i3000R-XL2U	103006463-6591	3000/2700	C20	(8) C13, (1) C19	3.4 x 17.2 x 23.6 (87 x 438 x 600)	65.0 (29.5)
<b>Rack extended battery modules</b>						
PW9130N1000R-EBM2U <sup>5</sup>	103006458-6591	NA	NA	NA	3.4 x 17.2 x 17.7 (87 x 438 x 450)	48.7 (22.1)
PW9130N1500R-EBM2U <sup>6</sup>	103006459-6591	NA	NA	NA	3.4 x 17.2 x 17.7 (87 x 438 x 450)	62.0 (28.1)
PW9130N3000R-EBM2U <sup>7</sup>	103006460-6591	NA	NA	NA	3.4 x 17.2 x 23.6 (87 x 438 x 600)	90.6 (41.1)

**Tower models**

Catalog number	Style number	Rating (VA/Watts)	Input connection	Output receptacles	Dimensions H x W x D, in (mm)	Weight, lb (kg)
<b>North American tower models: 120V, 50/60 Hz</b>						
PW9130L700T	103006426-6591	700/630	5-15P	(6) 5-15R	9.1 x 6.3 x 13.8 (230 x 160 x 350)	26.9 (12.2)
PW9130L1000T-XL	103006427-6591	1000/900	5-15P	(6) 5-15R	9.1 x 6.3 x 15.0 (230 x 160 x 380)	32.0 (14.5)
PW9130L1500T-XL	103006428-6591	1500/1350	5-15P	(6) 5-15R	9.1 x 6.3 x 16.9 (230 x 160 x 430)	41.9 (19.0)
PW9130L2000T-XL	103006429-6591	2000/1800	5-20P	(1) L5-20R, (4) 5-15/20R	12.8 x 8.4 x 16.1 (325 x 214 x 410)	76.1 (34.5)
PW9130L3000T-XL	103006430-6591	3000/2700	L5-30P	(4) 5-15/20R, (1) L5-30R	12.8 x 8.4 x 16.1 (325 x 214 x 410)	76.1 (34.5)
<b>Global tower models: 208V, 50/60 Hz</b>						
PW9130G1000T-XL	103006431-6591	1000/900	L6-20P <sup>3</sup>	(1) L6-20R, (2) 6-20R	9.1 x 6.3 x 15.0 (230 x 160 x 380)	32.0 (14.5)
PW9130G2000T-XL	103006432-6591	2000/1800	L6-20P <sup>3</sup>	(1) L6-20R, (4) 6-20R	12.8 x 8.4 x 16.1 (325 x 214 x 410)	76.1 (34.5)
PW9130G3000T-XL	103006446-6591	3000/2700	L6-20P <sup>4</sup>	(1) L6-30R, (1) L6-20R, (2) 6-20R	12.8 x 8.4 x 16.1 (325 x 214 x 410)	76.1 (34.5)
PW9130G1000T-XLEU	103006477-6591	1000/900	L6-20P <sup>3</sup>	(6) C13	9.1 x 6.3 x 15.0 (230 x 160 x 380)	32.0 (14.5)
PW9130G2000T-XLEU	103006478-6591	2000/1800	L6-20P <sup>3</sup>	(8) C13, (1) C19	12.8 x 8.4 x 16.1 (325 x 214 x 410)	76.1 (34.5)
PW9130G3000T-XLEU	103006479-6591	3000/2700	L6-20P <sup>4</sup>	(8) C13, (1) C19	12.8 x 8.4 x 16.1 (325 x 214 x 410)	76.1 (34.5)
<b>International tower models: 230V, 50/60 Hz</b>						
PW9130i700T-XL	103006433-6591	700/630	C14	(6) C13	9.1 x 6.3 x 13.8 (230 x 160 x 350)	26.9 (12.2)
PW9130i1000T-XL	103006434-6591	1000/900	C14	(6) C13	9.1 x 6.3 x 15.0 (230 x 160 x 380)	32.0 (14.5)
PW9130i1500T-XL	103006435-6591	1500/1350	C14	(6) C13	9.1 x 6.3 x 16.9 (230 x 160 x 430)	41.9 (19.0)
PW9130i2000T-XL	103006436-6591	2000/1800	C14	(8) C13, (1) C19	12.8 x 8.4 x 16.1 (325 x 214 x 410)	76.1 (34.5)
PW9130i3000T-XL	103006437-6591	3000/2700	C20	(8) C13, (1) C19	12.8 x 8.4 x 16.1 (325 x 214 x 410)	76.1 (34.5)
<b>Tower extended battery modules</b>						
PW9130N1000T-EBM <sup>5</sup>	103006438-6591	NA	NA	NA	9.1 x 6.3 x 15.0 (230 x 160 x 380)	40.8 (18.5)
PW9130N1500T-EBM <sup>6</sup>	103006439-6591	NA	NA	NA	9.1 x 6.3 x 16.9 (230 x 160 x 430)	53.6 (24.3)
PW9130N3000T-EBM <sup>7</sup>	103006440-6591	NA	NA	NA	12.8 x 8.4 x 16.1 (325 x 214 x 410)	110.3 (50.0)

<sup>1</sup> Input cord length is 6 ft

<sup>2</sup> Rack models occupy 2U of rack space and fit into 19-inch racks

<sup>3</sup> C14, w/detachable L6-20P

<sup>4</sup> C20, w/detachable L6-20P

<sup>5</sup> This EBM works with 700/1000 VA models, where available

<sup>6</sup> This EBM works with 1500 VA model

<sup>7</sup> This EBM works with 2000/2500/3000 VA models, where available

**Additional notes:**

When high voltage 9130 is used at 208V, derate power by 10%, and 20% at 200V

When low voltage 9130 is used at 110V, derate power by 10%, and 20% at 100V

# Technical specifications<sup>1</sup>

## General

User interface	Graphical LCD with blue backlight and text in English, French, German, Russian and Spanish
LEDs	Four status-indicating LEDs
Topology	True online, double-conversion
Diagnostics	Full system self-test
UPS bypass	Automatic bypass
Dimensions	See models table
Rail kit	4-post rail kit included with all rackmount units
EBMs	Ship with a rail kit
Remote Emergency Power-off (REPO)	Emergency shutdown control through the REPO port

## Electrical input

Nominal voltage	120V, 208V, 220–240V
Voltage range	120V: 90–138 Vac 208/230V: 160–276 Vac
Power draw of UPS	700: 5.8A @120V, 3.4A @208V, 3.0A @230V 1000: 8.3A @120V, 4.8A @208V, 4.3A @230V 1500: 12.5A @120V, 7.2A @208V, 6.5A @230V 2000: 16.6A @120V, 9.6A @208V, 8.7A @230V 2500: 20.8A @208V, 10.9A @230V 3000: 14.4A @208V, 13.0A @230V
Dedicated circuit breaker rating	<b>120V:</b> 700–1500 VA: 15A 2000 VA: 20A 2500–3000 VA: 30A <b>208/230V:</b> 700–2000 VA: 10A 3000 VA: 16A
Frequency	50/60 Hz
Frequency range	45–65 Hz

## Electrical output

Power factor	0.9
On utility voltage regulation	±3% of nominal
On battery voltage regulation	±3% of nominal
Efficiency	>95% in high-efficiency mode; >86% in online mode
Frequency regulation	±3% Hz online
Load crest factor	3 to 1
Voltage waveform	Sine wave
Load segments	Two configurable, individually controlled receptacles

## Battery

Battery type	VRLA 12V/9 Ah (both internal and external)
Battery runtime	>3 minutes with internal batteries @100% load
Battery replacement	Hot-swappable internal and external batteries
Start-on-battery	Allows start of UPS without utility input

UNITED STATES  
8609 Six Forks Road  
Raleigh, NC 27615 U.S.A.  
Toll Free: 1.800.356.5794

[www.eaton.com/powerquality](http://www.eaton.com/powerquality)

CANADA  
Ontario: 416.798.0112  
Toll free: 1.800.461.9166

LATIN AMERICA  
Argentina: 54.11.4124.4000  
Brazil: 55.11.3616.8500  
México: 52.55.9000.5252

## Communications

Serial port	RS-232 standard, for interface to power management software
USB port	HID standard, for communicating with Windows 98, XP, ME and Vista computers
Relay output	Common alarm standard
Communications slot	Optional communication slots (BD Slot)
Optional communication cards	SNMP/Web card for direct control and monitoring in SNMP-based networks, monitoring of UPS status and meters through Web browser interface Relay card for integration to industrial environment and building management systems, remote shutdown for IBM AS/400 systems

## Environmental

Safety markings	120/208V: UL, CUL, VCCI 230V: CE, GS
EMC markings	120V: FCC Class B, EN55022 Class B (1.5 kVA and below); FCC Class A, EN55022 Class A (2.0 kVA and above) 230V: CE (per IEC/EN62040-2: Emissions, Category C1; Immunity, Category C2)
Audible noise	<50 dB
Ambient operating temperature	0°C (32°F) to +40°C (104°F)
Storage temperature	-20°C (-4°F) to +40°C (104°F) with batteries and -25°C (-13°F) to +55°C (131 °F) without batteries
Relative humidity	5–90% non-condensing

## Heat dissipation for all voltages: 208–240V and 120V

9130 model	Normal mode, BTUs/hr	On battery, BTUs/hr
700 VA	350	554
1000 VA	500	674
1500 VA	750	1,011
2000 VA	838	1,348
2500 VA	1,047	1,463
3000 VA	1,257	1,755

<sup>1</sup> Due to continuing product improvement programs, specifications are subject to change without notice.



EUROPE/MIDDLE EAST/AFRICA  
Denmark: 45.3686.7910  
Finland: 358.94.52.661  
France: 33.1.6012.7400  
Germany: 49.0.7841.604.0  
Italy: 39.02.66.04.05.40  
Norway: 47.23.03.65.50  
Portugal: 55.11.3616.8500  
Sweden: 46.8.598.940.00  
United Kingdom: 44.1753.608.700

ASIA PACIFIC  
Australia: 61.2.9693.9366  
New Zealand: 64.0.3.343.3314  
China: 86.21.6361.5599  
HK/Korea/Taiwan: 852.2745.6682  
India: 91.11.2649.9414 to 18  
Singapore/SEA: 65.6825.1668

Eaton, ABM, Flex, LanSafe, PowerChain Management and PowerTrust are trade names, trademarks, and/or service marks of Eaton Corporation or its subsidiaries and affiliates. All other trademarks are property of their respective owners.

© 2009 Eaton Corporation  
All Rights Reserved  
Printed in USA  
9130FXA  
January, 2009