



HARDWARE PLATFORM



Contents

- About AOPEN p.3
- Success Stories p.4-5
- Computing Platform/Digital Engine®
 - + Value Range p.8-10
 - + Mid Range p.11-13
 - + High Range p.14-19
- Integrated Touch Systems p.20-25
- Displays p.26-29
- Accessories
 - + Engine Core™ p.31
 - + Digital Elements p.32
 - + Mounting Solutions p.33-34
 - + Optional Kits p.35





AOPEN

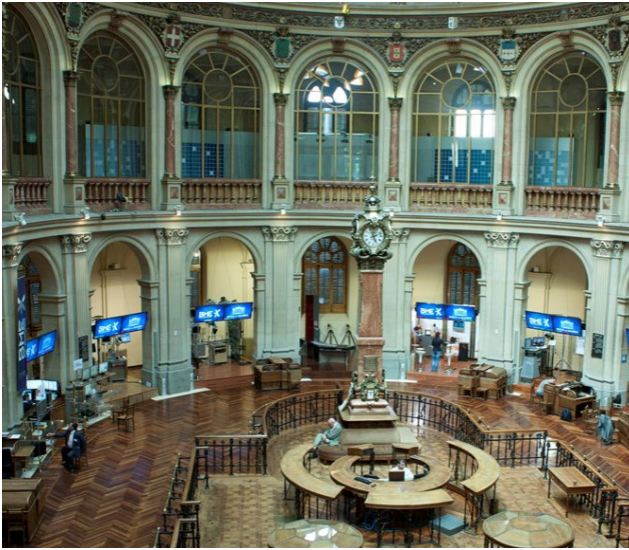
Bright Ideas Connected

AOPEN Inc., founded in 1996, is headquartered in Taiwan with offices in America, Europe, Asia and the Pacific. AOPEN has more than 17 years of IT hardware manufacturing experience along with keen insights into IT industry trends that help drive the growth of AOPEN. As the leading manufacturer of digital signage hardware solutions worldwide, AOPEN continues to expand its products and services for digital signage and other vertical application markets. With in-depth market knowledge, AOPEN can offer advice for complete digital signage platform solutions. AOPEN has cultivated a sophisticated ecosystem of premium solution providers to offer its solutions via its value added channel network to the market.

We now use our expertise and technology to transform highly technical products into easy-to-use, accessible digital communications solutions to support integrators, partners and end customers.

Whether your business operates in healthcare, hospitality, transportation, security or education; AOPEN solutions will enable you to turn concepts into reality.





Bolsa de Madrid

Informative Signage on the Trade Floor

Bolsa de Madrid (Madrid Stock Exchange) is the largest of Spain's four stock exchanges. When it comes to the trading of stocks and bonds, nothing is more important than real-time information. This flow of information can't be disrupted, therefore a new and more sophisticated system was built and implemented. The newly implemented digital signage concept meets the high demand for up to date information on the trading floor, offering different types of content regarding the condition of distinctive markets at any given moment in time.

- + Real time content updates
- + Complete control from one single point
- + Reliable and powerful solution



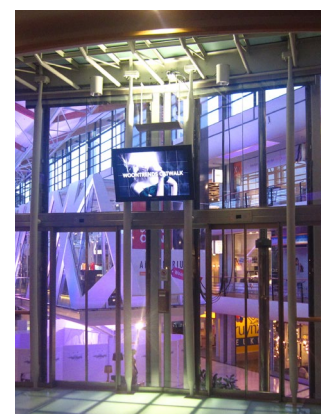
Alexandrium

Shopping center Rotterdam Alexandrium uses interactive digital wayfinding

With such a large ground of shopping space, the management of Rotterdam Alexandrium decided to give innovations such as digital signage and wayfinding a place in this modern shopping center.

The management of the shopping center explains: "Alexandrium Woonmall has been transformed into a real shopping experience thanks to the renovations."

- + Creation of a shopping experience
- + Proven track record of technology used
- + A stylish design to attract new customers





TMB

Real Time Video Information in Transportation

Transports Metropolitans de Barcelona (TMB) is Catalonia's main public transport operator in Barcelona, covering the buses and metro network services in the city. With thousands of passengers a day, TMB wanted to provide users with real time public transport information along with general and practical information to enrich the journey. When designing the system, TMB wanted a reliable and powerful system to satisfy their key objectives.

- + Improve customer satisfaction by delivering real-time travel information
- + Enable advertising revenue through offering commercial advertising space for video clips
- + Add extra entertaining information to enhance the traveling experience

Wendy's

Wendy's Restaurants in Moscow using AOPEN Digital Engine for power and reliability

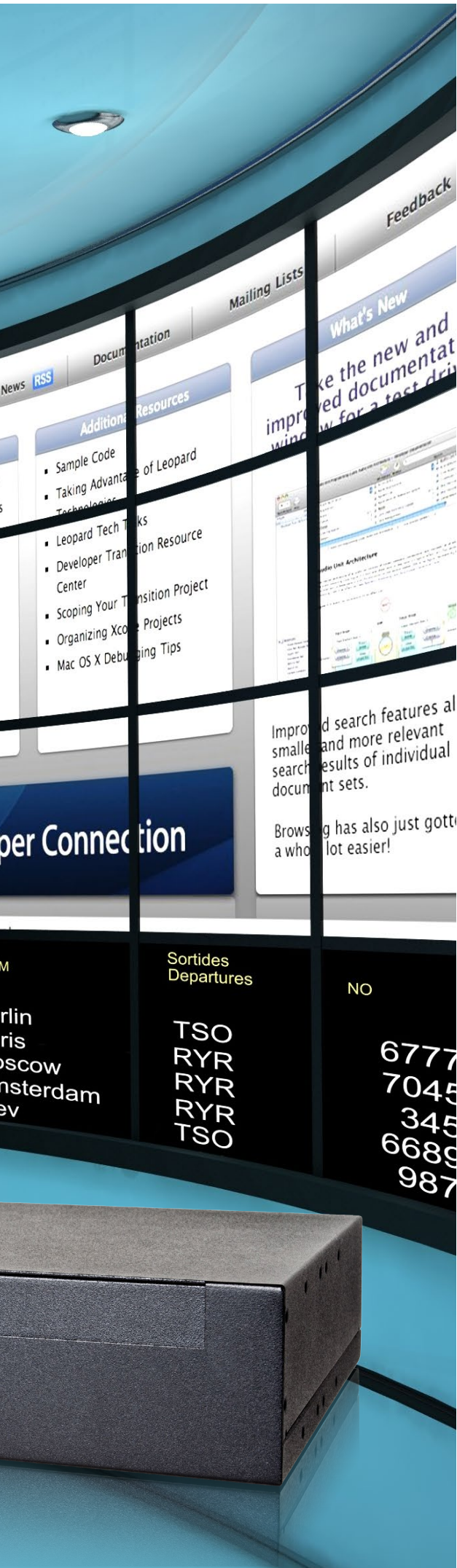
Wendy's is an international fast food chain with over 6,600 restaurants worldwide. Wendy's Russia was looking to use innovative technologies for managing content on digital menu screens.

According to Tatyana Meksicheva, Marketing Director at Wenrus Restaurant Group (Wendy's): "Wendy's core value - "Quality is our Recipe" is a timeless guideline for Wendy's franchises. It is also the guideline for choosing the right in-store design and solutions."

- + Reliable solution
- + Easy control and centralized management
- + Attractive design to promote brand identity







Computing Platform

AOPEN Digital Engine® series consists of a range of computing devices that provide an outstanding platform in applied computing. Each device has low power consumption and guarantees 24/7 operability. The unique small form factor makes it ideal to integrate in a kiosk or POS system or simply mount it behind the display. All systems have passed shock and vibration tests to ensure performance in rigorous environments.

All devices are built with excellence in mind, from a basic bare system to a state-of-the-art solution.

The industrial design makes our hardware ideal for integrated solutions such as information displays, medical care terminals, ticketing-/vending- machines, in-vehicle displays, real-time information systems, whiteboards, projectors, flight information display systems and many more.

AOPEN Digital Engine series are classified from value, mid to high end. This selection is based on CPU power, graphic performance, active/passive cooling and price.

Value

Entry level computing devices providing for a cost effective platform.

Mid

Enterprise quality rich media applications for high definition graphics.

High

Stunning performance and infallible computing in critical environments.

Comparison Table

Value Range



DE3100			DE35-HD		
Dimension W x H x D (mm)		166(W) x 48(H) x 157(D) mm			166(W) x 48(H) x 157(D) mm
CPU		Intel® Atom™ D2550 1.86GHz			AMD Embedded G-series CPU T56N (1.65GHz), Dual Core, TDP 18W (C0 version)
Chipset		Intel® NM10 Chipset			Hudson E1 (A55E)
Graphics		Intel® GMA3650			AMD Radeon HD 6310 (B0 version)
Storage Bay	Slot-in Slim ODD Bay	N/A			N/A
	2.5" SATA II HDD Bay	x1			x1
I/O	DC Jack				x1
	DVI Port				x1
	VGA Port				x1 (via DVI to VGA converter)
	HDMI Port				N/A
	Display Port				x1
	USB 2.0				Front I/O: x2 Rear I/O: x2
	USB 3.0				Rear I/O: x2
	eSATA Port				N/A
	RJ45 LAN Jack				x1
	RS232 Serial Port (COM Port)				x1
	Audio	Line-in			N/A
		Line-out			x1
		Mic-in			x1
	Antenna Hole				x2
	Kensington Lock Hole				x1
Cooling		Passive (Fanless)			Active (with fan)
MTBF		40,000hrs			40,000hrs
Operating Temperature		0 ~ 40°C (32 ~ 104°F)			0 ~ 50°C (32 ~ 122°F)
Storage Temperature		-20 ~ 60°C (-4 ~ 140°F)			-30 ~ 60°C (-22 ~ 140°F)
Relative Humidity		90% RH (40°C non-Condensing)			90% RH (40°C non-Condensing)
Graphical Processing Power		*			**
Central Processing Power		*			*

DE3100

Cost Effective Signage

The DE3100 is positioned as an entry-level computing device, designed for the application computing market. Built on Intel® Atom™ Processor D2550, this fanless device provides for a cost effective and environmentally friendly computing solution, while maintaining high performance.



Model name		DE3100	LAN		10/100/1000Mbps WOL/PXE
Feature		Intel® Atom™ Dual Core	Storage		2.5" SATA II HDD x1 mSATA x1
Housing Material		SECC t=0.8 mm	WatchDog Timer		1 ~ 255 SEC./min
Dimension W x H x D (mm)		166 x 48 x 157 mm	Adapter		65W (19V, 3.42A) AC Adapter
Weight(Kg/Pound)		1.08 kg/2.376 pound (N.W.)	Input Voltage		AC 100 ~ 240V/DC 12V/19V
CPU	Type	Intel® Atom™ D2550 1.86GHz	Environment		
	FSB	533 MHz	MTBF	40,000hrs	
Chipset		Intel® NM10 Chipset	Operating Temperature	0 ~ 40°C (32 ~ 104°F)	
Memory	Channels	Single	Storage Temperature	-20 ~ 60°C (-4 ~ 140°F)	
	Type	2GB DDRIII SO-DIMM x 1	Relative Humidity	90% RH	
	DDR	1066/1333	Operating Vibration	0.5Gms, Random, 10 ~ 500Hz,X-,Y,Z 3Axes, 0.5hr/Axis	
	Max Memory	4GB	Non-Operating Vibration	2Gms, Random, 10 ~ 500Hz,X-,Y,Z 3Axes, 0.5hr/Axis	
Graphics	Chip	Intel® GMA3650	Operating Shock	8G, Half sine, 11ms duration	
Expansion	Mini Card Slot	Full size x 1, half size x 1	Non-Operating Shock	50G, Half sine, 11ms duration	
Audio	Type	Realtek HD Audio Codec ALC662			
	Channels	Stereo / 5.1 CH with HDMI			

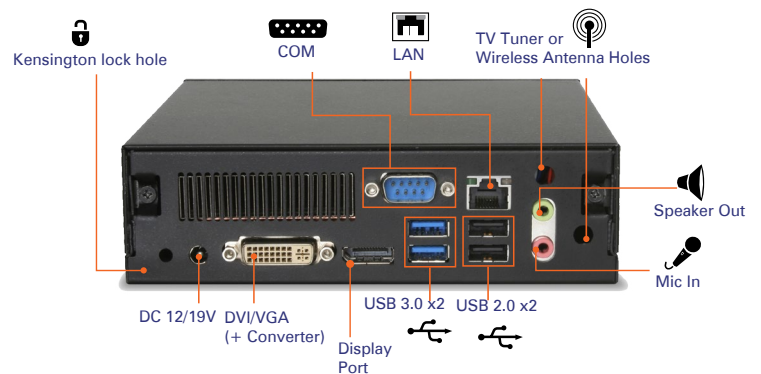
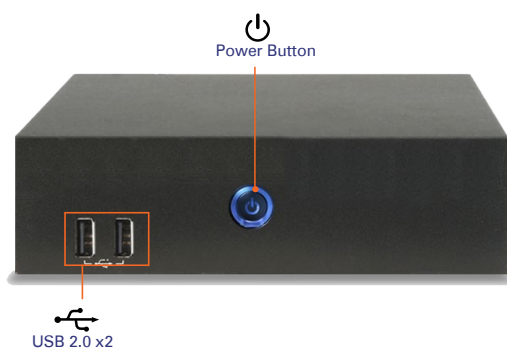
Supports:



DE35-HD

Premier AMD based system

Specially designed for the digital signage industry as a cost effective and graphically strong media player. As the first AMD based media player in the Digital Engine range, this player offers high performance Full HD 1080 content playback and multi-display capabilities.



Model name		DE35-HD
Feature		DX11 / AMD Radeon HD 6320
Housing Material		SECC t=0.8mm
Dimension W x H x D (mm)		166 x 48 x 157mm
Weight (Kg/Pound)		1.1 kgs / 2.42 lbs (N.W.)
CPU	Socket	BGA
	Type	AMD Embedded G-series CPU T56N (1.65GHz), Dual Core, TDP 18W (C0 version)
Chipset		Hudson E1 (A55E)
Memory	Channels	Single Channel
	Type	DDRIII SO-DIMM x 2
	Speed Grade	1066Mbps (B0 version) 1333Mbps (C0 version)
	Max Memory	8G
Graphics	Chip	AMD Radeon HD 6310 (B0 version)
Audio	Type	Realtek HD Audio Codec ALC662
	Channels	Stereo / 5.1 CH with HDMI
LAN		10/100/1000Mbps WOL/PXE
Storage		2.5" SATA II HDD x1 mSATA x1
CPU Thermal Module		AOPEN Thermal Module
Noise (idle mode)		27dB
WatchDog Timer		1 ~ 255 SEC./ min
Adapter		65W (19V, 3.42A) AC Adapter
Input Voltage		AC 100 ~ 240V/DC 12/19V
Environment		
MTBF		40,000hrs
Operating Temperature		0 ~ 50°C (32 ~ 122°F)
Storage Temperature		-30 ~ 60°C (-22 ~ 140°F)
Relative Humidity		90% RH (40°C non-Condensing)
Operating Vibration		0.5Grms, Random, 10 ~ 500Hz, X,Y,Z 3Axes, 0.5hr/Axis
Non-Operating Vibration		2Grms, Random, 10 ~ 300Hz, X,Y,Z 3Axes, 1hr/Axis
Operating Shock		8G, Half sine, 11ms duration
Non-Operating Shock		50G, Half sine, 11ms duration

Supports:



*Android only available on OpenSign platform



Comparison Table

Mid Range

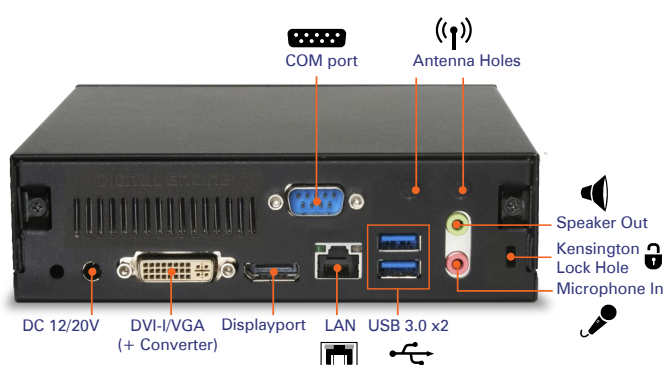
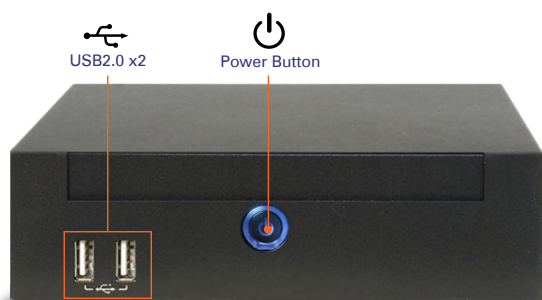


DE5100i				DE6100		
Dimension W x H x D (mm)		166(W) x 48(H) x 157(D) mm		166(W) x 48(H) x 157(D) mm		
CPU		Intel® Pentium™ B980/ 2M Cache, 2.4GHz		Supports AMD Embedded R-series APU Dual/ Quad core mobile processor TDP≤35W		
Chipset		Intel® HM65 Chipset		AMD A70M chipset		
Graphics		Integrated in CPU		AMD Radeon HD 7660G (build in APU R-464L) *GPU depends on CPU		
Storage Bay	Slot-in Slim ODD Bay		x1		N/A	
	2,5” SATA II HDD Bay		x1		x1	
I/O	DC Jack		x1		x1	
	DVI Port		N/A		N/A	
	VGA Port		N/A		N/A	
	HDMI Port		N/A		x2	
	Display Port		x1		x1	
	USB 2.0		Front I/O: x2		Front I/O: x2 Rear I/O: x2	
	USB 3.0		Rear I/O: x2		Rear I/O: x2	
	eSATA Port		N/A		N/A	
	RJ45 LAN Jack		x1		x1	
	RS232 Serial Port (COM Port)		x1		x1	
	Audio	Line-in	N/A		N/A	
		Line-out	x1		x1	
		Mic-in	x1		x1	
	Antenna Hole		x2		x2	
	Kensington Lock Hole		x1		x1	
	Cooling		Active (with fan)		Active (with fan)	
MTBF		40,000hrs		40,000hrs		
Operating Temperature		0 ~50°C (32 ~ 122°F)		0 ~50°C (32 ~ 122°F)		
Storage Temperature		-30 ~ 60°C (-22 ~ 140°F)		-30 ~ 60°C (-22 ~ 140°F)		
Relative Humidity		95% RH (50°C non-Condensing)		95% RH (50°C non-Condensing)		
Graphical Processing Power		**		****		
Central Processing Power		**		***		

DE5100i

Superior Graphic Performance

High-end computing ability for the most demanding and content heavy applications, while remaining cost effective. Thanks to the superior graphic performance, you have the power to display impactful messaging with top quality visuals. A great media player to support the AV industry.



Model name		DE5100i
Feature		Full System
Housing Material		SECC t=0.8 mm
Dimension	W x H x D (mm)	166 x 48 x 157 mm
Weight(Kg/Pound)		1.03 kg/2.27 pound (N.W.)
CPU	Socket	RPGA988B
	Type	Intel® Pentium™ B980/ 2M Cache, 2.4GHz
Chipset		Intel® HM65 Chipset
Memory	Channels	Dual Channel
	Type	DDRIII SO-DIMM 1333 x 2
	DDR	2GB x 2
	Max Memory	16G (depending on OS)
Graphics	Chip	Integrated in CPU
Audio	Type	Realtek HD Audio Codec ALC662
	Channels	Stereo/5.1 CH with HDMI
LAN		10/100/1000Mbps WOL/PXE
Storage		2.5" SATA III 320 GB HDD x1
		Slim ODD x1

Storage	mSATA x1
Expansion	Mini Card Slot
CPU Thermal	Noise (idle mode) 27dB
WatchDog Timer	1 ~ 255 SEC./min
Adapter	90W (20V, 4.5A) AC Adapter
Input Voltage	AC 100 ~ 240V/DC 12V/20V
Environment	
MTBF	40,000hrs
Operating Temperature	0 ~ 50°C (32 ~ 122°F)
Storage Temperature	-30 ~ 60°C (-22 ~ 140°F)
Relative Humidity	95% RH (50°C non-Condensing)
Operating Vibration	0.5Gms, Random, 10 ~ 500Hz,X,Y,Z 3Axes, 0.5hr/Axis
Non-Operating Vibration	2Gms, Random, 10 ~ 300Hz,X,Y,Z 3Axes, 1hr/Axis
Operating Shock	8G, Half sine, 11ms duration
Non-Operating Shock	50G, Half sine, 11ms duration

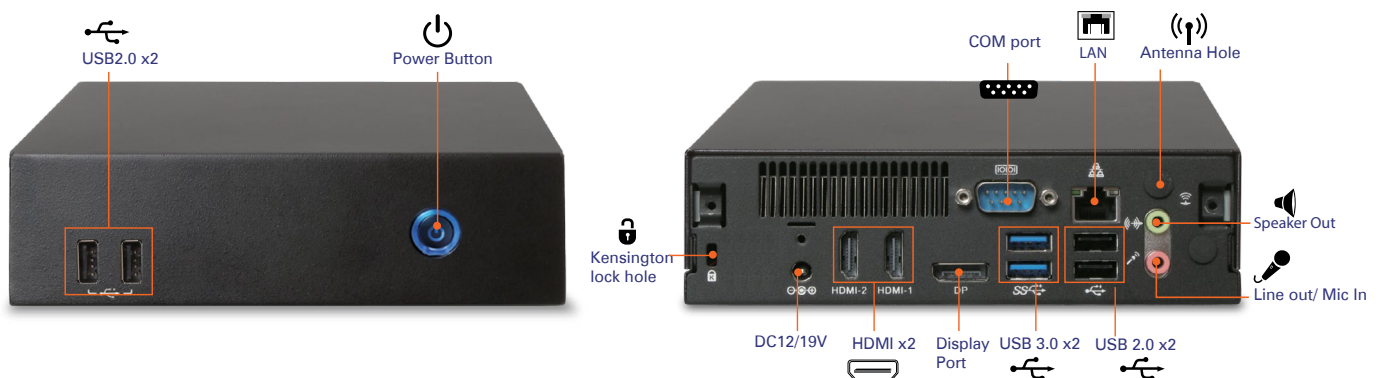
Supports:



DE6100

Enterprise Quality Rich Media Applications

The DE6100 is for those that demand the most advanced multimedia and computational workloads. The small and powerful system enables multi-display capabilities for cutting-edge digital signage applications. The versatile design of the DE6100 offers support for both Spanning (stretched desktop) and Extended Desktop on all connected screens for up to three independent (Full HD) displays.

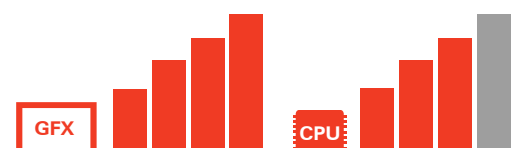


Model name		DE6100
Feature		AMD Eyefinity Technology / supports 3 independent displays
Housing Material		SECC t=0.8mm
Dimension	W x H x D (mm)	166 x 48 x 157 mm
Weight (Kg/Pound)		1.12 kgs / 2.46 lbs(N.W.)
CPU	Socket	Socket FS1r2
	Type	Supports AMD Embedded R-series APU Dual/Quad core mobile processor TDP≤35W
Chipset		AMD A70M chipset
Memory	Channels	Dual Channel
	Type	DDRIII SO-DIMM x 2
	Speed Grade	1333/1600Mbps
	Max Memory	16GB (depending on OS)
Graphics	Chip	AMD Radeon HD 7660G (build in APU R-464L) *GPU depends on CPU
Audio	Type	Realtek HD Audio Codec ALC662
	Channel	Stereo

Expansion	Mini Card Slot	Full size x1 (support mSATA)
LAN		10/100/1000Mbps
Storage		2.5" SATA III HDD x1 mSATA x1
CPU Thermal	Noise (idle mode)	27dB
WatchDog Timer		1 ~ 255 SEC./ min
Adapter		90W (19V, 4.74A) AC Adapter
Input Voltage		AC 100 ~ 240V/DC 12/19V

Environment	
MTBF	40,000hrs
Operating Temperature	0 ~ 50°C (32 ~ 122°F)
Storage Temperature	-30 ~ 60°C (-22 ~ 140°F)
Relative Humidity	95% RH (50°C non-Condensing)
Operating Vibration	0.5Gms,Random,10~500Hz,X-,Y,Z 3 Axes,0.5hr/Axis
Non-Operating Vibration	2Gms,Random,10~300Hz,X,Y,Z 3 Axes,1hr/Axis
Operating Shock	8G,Half sine,11 ms duration
Non-Operating Shock	50G,Half sine,11 ms duration

Supports:



Comparison Table

High Range



DE67-HA(I)		DE6140
Dimension W x H x D (mm)		166(W) x 48(H) x 157(D) mm
CPU		166(W) x 48(H) x 157(D) mm
		DE67-HA: Supports 2nd generation Intel® Core™ i3, i5, i7 mobile processor TDP≤35W&45W DE67-HA!: Supports above and 3rd generation Intel® Core™ i3, i5, i7 mobile processor TDP≤35W
Chipset		Intel® QM67 Chipset
Graphics		AMD A70M chipset
		Intel® HD graphic 3000/4000
Storage Bay	Slot-in Slim ODD Bay	N/A
	2.5" SATA II HDD Bay	x1
I/O	DC Jack	x1
	DVI Port	N/A
	VGA Port	N/A
	HDMI Port	x1 (via DVI-HDMI cable)
	Display Port	N/A
	USB 2.0	Front I/O: x2 Rear I/O: N/A
	USB 3.0	Rear I/O: x2
	eSATA Port	N/A
	RJ45 LAN Jack	x2
	RS232 Serial Port (COM Port)	x1
	Audio	N/A
		x1
		x1
	Antenna Hole	x2
	Kensington Lock Hole	x1
Cooling		Active (with fan)
MTBF		40,000hrs
Operating Temperature		0 ~50°C (32 ~ 122°F)
Storage Temperature		-30 ~ 60°C (-22 ~ 140°F)
Relative Humidity		95% RH (50°C non-Condensing)
Graphical Processing Power		***
Central Processing Power		****

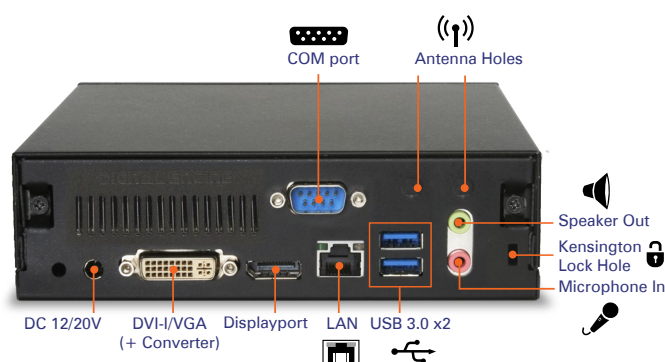


DEX7150			DE7200		
Dimension W x H x D (mm)		200(W) x 65(H) x 200(D) mm			166(W) x 48(H) x 157(D) mm
CPU		Supports 2nd generation Intel® Core™ i3, i5, i7 mobile processor, TDP≤35W Supports 3rd generation Intel® Core™ i3, i5, i7 mobile processor, TDP≤35W			Supports 4th generation Intel® Core™ vPro™ i3, i5, i7 mobile processor TDP≤47W
Chipset		Intel® QM77 chipset			Intel® QM87 Chipset
Graphics		Supports Intel® HD graphic 4000 (embedded on Ivy Bridge CPU) Supports Intel® HD graphic (embedded on Ivy bridge CPU, Intel Pentium 2020M) *GPU depends on CPU			Intel® HD Graphics 4600
Storage Bay	Slot-in Slim ODD Bay	N/A			N/A
	2,5" SATA II HDD Bay	x1			x1
I/O	DC Jack	x1			x1
	DVI Port	x1			N/A
	VGA Port	x1 (via DVI-VGA converter)			N/A
	HDMI Port	N/A			x2
	Display Port	x2			x1
	USB 2.0	Front I/O: x2 Rear I/O: x2			Front I/O: x2 Rear I/O: x2 (2 ports combined with eSATA)
	USB 3.0	Rear I/O: x2			Rear I/O: x2
	eSATA Port	x1			x2
	RJ45 LAN Jack	x2			x1
	RS232 Serial Port (COM Port)	x1			x1
	Audio	Line-in			N/A
		Line-out			x1
		Mic-in			x1
	Antenna Hole	x3			x2
	Kensington Lock Hole	x1			x1
Cooling		Passive (fanless)			Active (with fan)
MTBF		40,000hrs			50,000hrs
Operating Temperature		-5 ~ 40°C (23 ~ 104°F)			0 ~ 50°C (32 ~ 122°F)
Storage Temperature		-20 ~ 60°C (-4 ~ 140°F)			-30 ~ 60°C (-22 ~ 140°F)
Relative Humidity		90% RH (40°C non-Condensing)			95% RH (50°C non-Condensing)
Graphical Processing Power		***			***
Central Processing Power		****			****

DE67-HA(I)

Stunning Performance

With the growing demand for dynamic interactive apps such as video conferencing, social media, interactive menuboard, kiosks, HD movies and many more powerful, content-heavy applications, the DE67-HA(I) allows you to stay ahead of the curve. Aimed at those with the most demanding multimedia and computational workloads, the DE67-HA(I) provides stunning performance and razor sharp graphics to intensify the computing experience.



Model name		DE67-HA(I)
Feature		DE67-HA: Supports Intel® AMT 7.0 DE67-HA(I): Supports Intel® AMT 8.0
Housing Material		SECC t=0.8 mm
Dimension	W x H x D (mm)	166 x 48 x 157 mm
Weight(Kg/Pound)		1.03 kg/2.27 pound (N.W.)
CPU	Socket	RPGA988B
	Type	DE67-HA: Supports 2nd generation Intel® Core™ i3, i5, i7 mobile processor TDP≤35W&45W DE67-HA(I): Supports above and 3rd generation Intel® Core™ i3, i5, i7 mobile processor TDP≤35W
Chipset		Intel® QM67 Chipset
Memory	Channels	Dual Channel
	Type	DDRIII SO-DIMM x 2
	DDR	1066/1333
	Max Memory	16G (depending on OS)
Graphics	Chip	HD3000/4000
Audio	Type	Realtek HD Audio Codec ALC662
	Channels	Stereo/5.1 CH with HDMI
LAN		10/100/1000Mbps WOL/PXE

Storage	2.5" SATA III HDD x1 Slim ODD x1 mSATA x1
Expansion	Mini Card Slot
CPU Thermal	Noise (idle mode) 27dB
WatchDog Timer	1 ~ 255 SEC./min
Adapter	90W (20V, 4.5A) AC Adapter
Input Voltage	AC 100 ~ 240V/DC 12V/20V

Environment	
MTBF	40,000hrs
Operating Temperature	0 ~ 50°C (32 ~ 122°F)
Storage Temperature	-30 ~ 60°C (-22 ~ 140°F)
Relative Humidity	95% RH (50°C non-Condensing)
Operating Vibration	0.5Gms, Random, 10 ~ 500Hz,X,Y,Z 3Axes, 0.5hr/Axis
Non-Operating Vibration	2Gms, Random, 10 ~ 300Hz,X,Y,Z 3Axes, 1hr/Axis
Operating Shock	8G, Half sine, 11ms duration
Non-Operating Shock	50G, Half sine, 11ms duration

Supports:



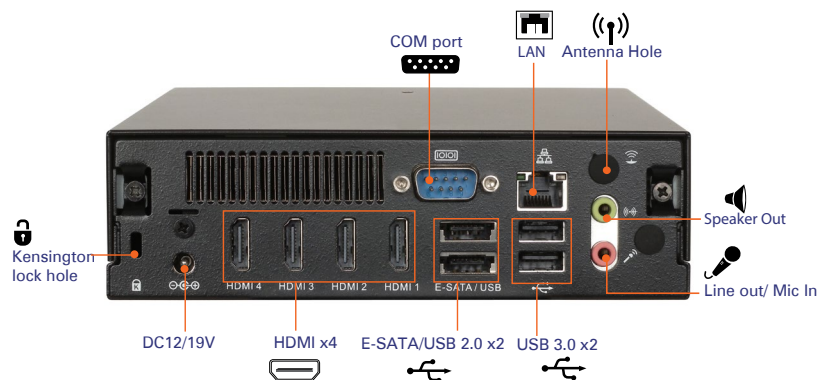
*Android only available for DE67-HA(I) on OpenSign platform



DE6140

Power Dynamic Content on Videowalls

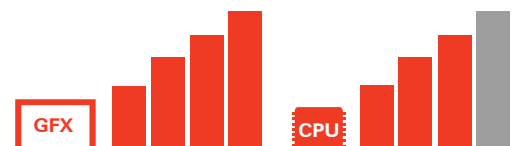
The DE6140 takes computing power to a whole new level. This small and powerful system enables multi-display capabilities for up to four Full HD screens. Whether powering a 2x2 or 4x1 video wall, or powering several screens on different locations, the DE6140 is the ideal machine for multi-screen purposes.



Model name		DE6140
Feature		AMD Eyefinity Technology/ supports 3 independent displays
Housing Material		SECC t=0.8mm
Dimension	W x H x D (mm)	166 x 48 x 157 mm
Weight (Kg/Pound)		1.12 kgs / 2.46 lbs(N.W.)
CPU	Socket	Socket FS1r2
	Type	Supports AMD Embedded R-series APU Quad core mobile processor TDP≤35W
Chipset		FCH: AMD A70M chipset
Memory	Channels	Dual Channel
	Type	DDRIII SO-DIMM x 2
	Speed Grade	1333/1600Mbps
	Max Memory	16GB (depending on OS)
Graphics	Chip	AMD Radeon HD 7660G (build in APU R-464L) *GPU depends on CPU
Expansion	Mini Card Slot	Full size x1 (support mSATA)
Audio	Type	Realtek HD Audio Codec ALC662
	Channel	Stereo

LAN	10/100/1000Mbps
Storage	2.5" SATA III HDD x1 mSATA x1
CPU Thermal Noise (idle mode)	27dB
WatchDog Timer	1 ~ 255 SEC./ min
Adapter	90W (19V, 4.74A) AC Adapter
Input Voltage	AC 100 ~ 240V/DC 12/19V
Environment	
MTBF	40,000hrs
Operating Temperature	0 ~ 50°C (32 ~ 122°F)
Storage Temperature	-30 ~ 60°C (-22 ~ 140°F)
Relative Humidity	95% RH (50°C non-Condensing)
Operating Vibration	0.5Gms,Random,10~500Hz,X-,Y,Z 3 Axes,0.5hr/Axis
Non-Operating Vibration	2Gms,Random,10~300Hz,X,Y,Z 3 Axes,1hr/Axis
Operating Shock	8G,Half sine,11 ms duration
Non-Operating Shock	50G,Half sine,11 ms duration

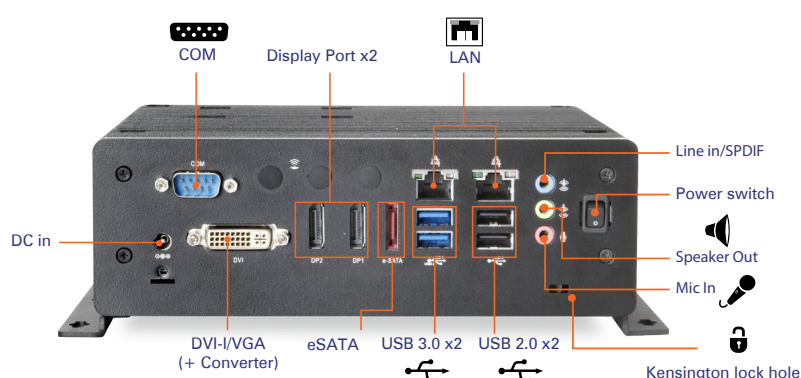
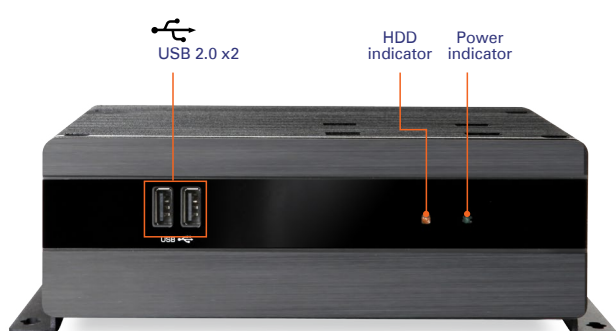
Supports:



DEX7150

Infallible Computing in Critical Environments

A fanless computing device designed for vigorous or highly sensitive environments where digital information displays, medical appliances, POS or kiosks are running. Thanks to its fanless design the system is silent, reliable and flexible as to their location.

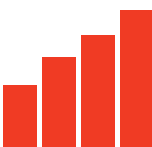
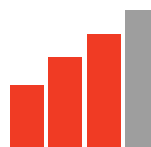


Model name		DEX7150
Feature		Fanless design to support Intel® 3rd generation CPU Supports 3 independent displays
Housing Material		SECC/ Aluminum
Dimension	W x H x D (mm)	200x 65 x 200mm
Weight (Kg/Pound)		2.67 kgs / 5.89 lbs (N.W.)
CPU	Socket	Socket G2/rPGA988B
	Type	Supports 2nd generation Intel® Core™ i3, i5, i7 mobile processor, TDP≤35W Supports 3rd generation Intel® Core™ i3, i5, i7 mobile processor, TDP≤35W
Chipset		PCH: Intel QM77 chipset
Memory	Channels	Dual Channel
	Type	DDRIII SO-DIMM x 2
	DDR	1333/1600Mbps
	Max Memory	16G (based on OS support)
Graphics	Chip	Supports Intel® HD Graphics 4000 (embedded on Ivy Bridge CPU) Supports Intel® HD graphic (em-bedded on Ivy bridge CPU, Intel Pentium 2020M) *GPU depends on CPU

Audio	Type	Realtek HD Audio Codec ALC662
	Channels	5.1 CH
Expansion	Mini Card Slot	Full size x1 (support mSATA)
LAN		10/100/1000Mbps WOL/PXE
Storage		2.5" SATA III HDD x1 mSATA x1
Adapter		90W (19V, 4.74A) AC Adapter
Input Voltage		AC 100~240V/DC 12/19V

Environment	
MTBF	40,000hrs
Operating Temperature	-5 ~40°C (23 ~ 104°F)
Storage Temperature	-20 ~ 60°C (-4 ~ 140°F)
Relative Humidity	90% RH (40°C non-Condensing)
Operating Vibration	0.5Gms,Random,10~500Hz,X-,Y,Z 3 Axes,0.5hr/Axis
Non-Operating Vibration	2Gms,Random,10~300Hz,X,Y,Z 3 Axes,1hr/Axis

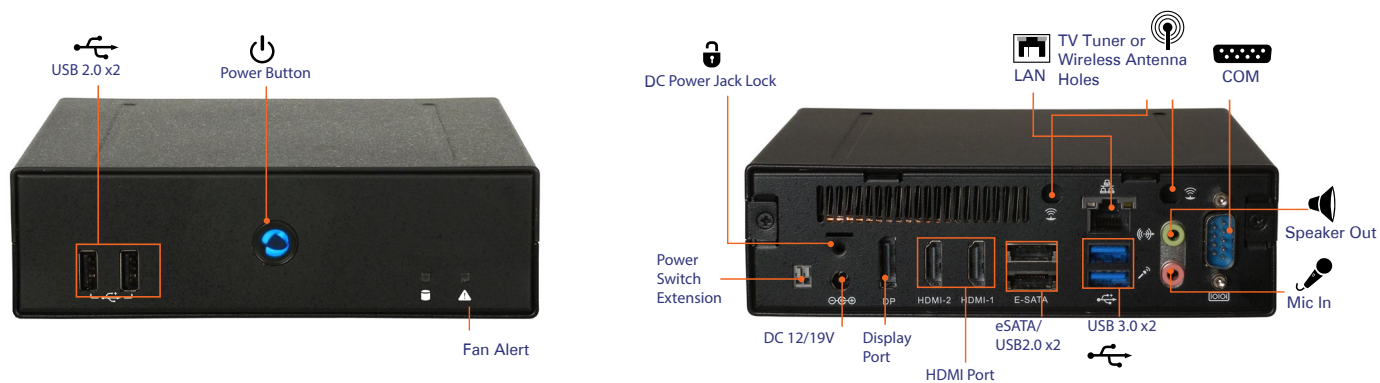
Supports:



DE7200

Striking Visuals & Increased Productivity

Accelerated performance for your most demanding tasks. The DE7200 allows you to run the most advanced software seamlessly and helps you create an immersive digital experience with powerful built-in visual enhancements. Integrating the latest Intel® technology, the DE7200 raises the bar on computing.



Model name		DE7200
Feature		Supports 4th generation Intel® Core™ vPro™ i3, i5, i7 mobile processor family
Housing Material		SECC t=0.8 mm
Dimen- sion	W x H x D (mm)	166 x 48 x 157 mm
Weight (Kg/Pound)		1.1 kgs / 2.42 lbs (N.W.)
CPU	Socket	Socket G3/rPGA946B/947
	Type	Supports 4th generation Intel® Core™ vPro™ i3, i5, i7 mobile processor TDP≤47W
Chipset		Intel® QM87 Chipset
Memory	Channels	Dual Channel
	Type	DDRIII Low Voltage SO-DIMM x 2
	DDR	1333/1600Mbps
	Max Memory	16G (based on OS support)
Graphics	Chip	Supports Intel® HD Graphics 4600 *GPU depends on CPU

Audio	Type	Realtek HD Audio Codec AL-C269Q
	Channels	Stereo/5.1 CH with HDMI
Expansion	Mini Card Slot	Full size x1, half size x1
LAN		10/100/1000Mbps WOL/PXE
Storage		2.5" SATA III HDD x1 mSATA x1
Adapter		90W (19/12V, 4,5A) AC Adapter
Input Voltage		AC 100~240V/DC 12/20V

Environment	
MTBF	50,000hrs
Operating Temperature	0 ~ 50°C (32 ~ 122°F)
Storage Temperature	-30 ~ 60°C (-22 ~ 140°F)
Relative Humidity	95% RH (50°C non-Condensing)
Operating Vibration	0.5Gms,Random,10~500Hz,X-,Y,Z 3 Axes,0.5hr/Axis
Non-Operating Vibration	2Gms,Random,10~300Hz,X,Y,Z 3 Axes,1hr/Axis

Supports:





Integrated Touch Systems

One of the fundamental advantages of interactive touch systems is the increased audience engagement level. When interacting with a screen, passersby become engaged in an entirely different manner than when passively absorbing information. The level of engagement transforms from peripheral awareness of a screen and content, to focused interaction. Passive consumers now become actively engaged, frequently holding attention for longer periods of time than traditional one-way broadcasting would. This engagement can strengthen the relationship with the consumer and strengthen the ties with your message/brand.

Interactivity is an ideal tool to gain an understanding of your audience behavior and preferences, giving you the chance to adjust to more targeted and personalized marketing campaigns.

AOPEN's range of Integrated Touch Systems provide a steady and secure solution to drive customer engagement at the point of purchase.

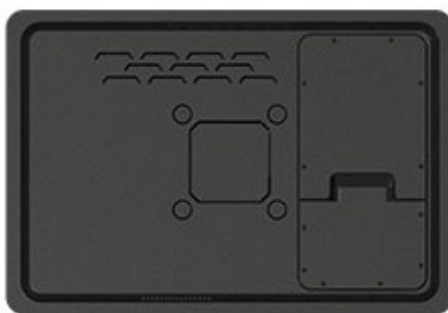




WarmTouch 19

An easy to install all-in-one touchscreen device, equipped with a multitouch panel designed for customer interaction. The system's robust structure makes it safe to install in even the most demanding environments.

- + IP65 grade dust & waterproof panel
- + Fanless system
- + All function keys are supported with a security lock, making it the ideal system for public environments



WT19M-RC

Dimensions 465 x 314 x 67.6 mm (W x H x D)

Weight 7kg

Mass Storage 2.5" SATA II HDD x1
(optional 2.5" SATA SSD x1)

CPU Intel® Atom™ D2550 (1.86G Cedar Trail-D)

Chipset Intel® NM10

Memory Supports: 2 x DDRIII SO-DIMM (Max 4G)

LAN Dual Intel Gigabit Ethernet
10/100/1000

Audio Realtek ALC886

Mini-Card Slot Full size x1 (support mSATA), Half size x1

LCD Default Resolution : 19" (1440x900)
Maximum Brightness : 250 Nits

Aspect Ratio/Resolution 16:10/HD-ready

Touch Panel

AMR Multi Touch Surface, 4 Wire, 10 points Resistive
Surface Pencil Hardness 3H per ASTM D 3363.
Pen Hitting: more than 1,000,000 times (loading 250g)

Speakers

Built-in 2W Stereo Speaker

Webcam

Built-in 1.3M

Button/Indicator

Power Button, Monitor Function Buttons,
HDD indicator (red)
Power indicator (blue)

System I/O

DC 19V Jack x1
COM Port x4
PC VGA Out Port x1
Monitor VGA In Port x1
GbE RJ45 LAN x2
USB 2.0 x4
Printer Port x1
RJ-11 Port x1
5.1CH Audio Jack: Audio Line-in x1, Line-out x1, Mic-in x1
Kensington Lock Hole x1

Front Panel

IP65 grade Dust- & Waterproof

Watchdog Timer

1 sec ~ 255 sec

Accessories

Wall Mount Kit x1
90W Power Adapter x1
Power Cord x1
Utilities & Drivers CD x1

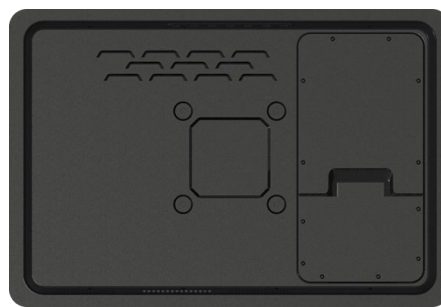
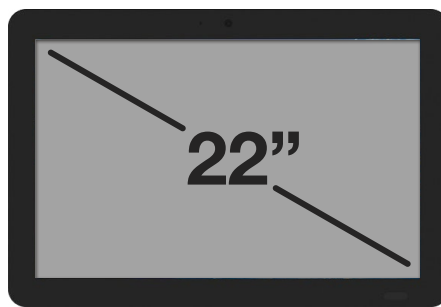
Supports:



WarmTouch 22

An interactive multitouch display with built-in PC, based on AOPEN Digital Engine technology. The display is built in an aluminium casing designed to handle the rigors of intense use in a variety of scenarios.

- + IP65 grade dust & waterproof panel
- + Full HD display, with ideal viewing angle for both portrait and landscape orientation
- + All function keys are supported with a security lock, making it the ideal system for public environments



WT22M-RHI

Dimensions	533 x 333 x 61.2 mm (W x H x D)	Touch Panel	AMR Multi Touch Surface, 4 Wire, 10 points Resistive Pencil Hardness 3H per ASTM D3363 Pen Hitting: more than 1,000,000 times (loading 250g)
Weight	7.4kg	Speakers	Built-in 2W Stereo Speaker
Mass Storage	2.5" SATA II HDD x1 (optional 2.5" SATA SSD x1)	Webcam	Built-in 1.3M
CPU	Intel® 2nd and 3rd generation Intel® Core™ i3, i5, i7 mobile processor TDP≤35W	Button/Indicator	Power Button, Monitor Function Buttons, HDD indicator (red) Power indicator (blue)
Chipset	Intel® QM67	System I/O	DC 19V Jack x1 COM Port x4 PC VGA Out Port x1 Monitor VGA In Port x1 GbE RJ45 LAN Jack x2 USB 2.0 x6 Printer Port x1 RJ-11 Port x1 5.1CH Audio: Audio Line-in x1, Line-out x1, Mic-in x1 Kensington Lock Hole x1
Memory	Supports: 2 x DDRIII SO-DIMM (Max 8G)	Front Panel Watchdog Timer	IP65 grade Dust- & Waterproof 1 sec ~ 255 sec
LAN	Dual Intel Gigabit Ethernet 10/100/1000	Accessories	Wall Mount Kit x1 90W Power Adapter x1 Power Cord x1 Utilities & Drivers CD x1
Audio	Realtek ALC886		
Mini-Card Slot	Full size x1 (support mSATA), Half size x1		
LCD	Default Resolution : 21.5" (1920 x 1080) Maximum Brightness : 250 Nits		
Aspect Ratio/Resolution	16:9/Full HD		

Supports:



eTILE 15

The eTILE 15 is an ultra-thin, ultra-powerful and multi-purpose 15.6" multitouch PC tile, based on Intel® Core™ Processor technology and built to perform in the most demanding commercial environments. The eTILE 15 is highly robust with built-in cable management so that no ports are visible to the customer, making the device totally secure and tamper proof.

- + Ideal for POS due to its small size
- + No necessity for an enclosure or kiosk
- + Low operating and installation costs
- + Robust PCT panel: dust and water proof (IP65)



35mm



eTILE 15

Dimensions 380.5 x 230 x 35 mm (W x H x D)

Weight 3.5kg

Mass Storage 2.5" SATA III HDD x1
(optional 2.5" SATA SSD x1)

CPU Intel® 2nd and 3rd generation Intel® Core™ i3, i5, i7 mobile processor TDP≤35W

Chipset Intel® QM77

Memory Supports: 2 x DDRIII SO-DIMM (Max 8G)

LAN Single Intel Gigabit Ethernet 10/100/1000
Built-in WiFi antenna (optional Wi-Fi card b/g/n)

Audio Realtek ALC886

Mini-Card Slot Full size x1 (support mSATA), Half size x1

LCD Default Resolution : 15.6" (1920x1080)
Maximum Brightness : 300 Nits

Aspect Ratio/Resolution 16:9/Full HD

Touch Panel

PCT Multi Touch Surface (10 point touch)
Pencil Hardness 7H per ASTM D3363
Pen Hitting: more than 20,000,000 times (loading 180g)

Speakers

Built-in 2W Stereo Speaker

Webcam

Built-in 1.0M

Security

Hidden Keypad
Magnetized/Secure cable and port cover

System I/O

DC 19V Jack x1
RS232 Port (Monitor) x1
HDMI Out Port x1
RJ45 LAN Jack x1
USB2.0 x2
USB 3.0 x2
Line-out x1, Mic-in x1

Front Panel

IP65 grade Dust- & Waterproof

Watchdog Timer

1 sec ~ 255 sec

Accessories

Wall Mount Kit x1
120W Power Adapter x1
Power Cord x1
Utilities & Drivers CD x1

Supports:



*Android only available on OpenSign platform

eTILE 19

The eTILE 19 is an ultra-thin and exceptionally powerful 18.5" multi-touch PC tile. Designed for commercial retail use, it also has a keen sense of style and aesthetic detail with a slick Piano Black construction that will enhance any shopper's user experience. It is the kind of device that will markedly improve the engagement between the customer and your brand as a result.

- + Ultra slim form factor (30mm)
- + Easy installation (wall mount kit included)
- + Low operating and installation costs
- + Robust PCT panel: dust and water proof (IP65)



30mm



eTILE 19

Dimensions 448 x 284 x 30 mm (W x H x D)

Weight 5kg

Mass Storage 2.5" SATA III HDD x1
(optional 2.5" SATA SSD x1)

CPU Intel® 2nd and 3rd generation Intel® Core™ i3, i5, i7 mobile processor TDP≤35W

Chipset Intel® QM77

Memory Supports: 2 x DDRIII SO-DIMM (Max 8G)

LAN Single Intel Gigabit Ethernet
10/100/1000
Built-in WiFi antenna (optional Wi-Fi card b/g/n)

Audio Realtek ALC886

Mini-Card Slot Full size x1 (support mSATA), Half size x1

LCD Default Resolution : 18.5" (1366x768)
Maximum Brightness : 250 Nits

Aspect Ratio/Resolution 16:9/HD-ready

Touch Panel

PCT Multi Touch Surface (10 point touch)
Pencil Hardness 7H per ASTM D3363
Pen Hitting: more than 20,000,000 times (loading 180g)

Speakers Built-in 2W Stereo Speaker

Webcam Built-in 1.3M

Security Hidden keypad
Secure Cable and port cover

System I/O

DC 19.5V Jack x1
RS232 Port (Monitor) x2
HDMI Out Port x1
RJ45 LAN Jack x1
USB2.0 x2
USB 3.0 x2
Line-out x1, Mic-in x1

Front Panel IP65 grade Dust- & Waterproof

Watchdog Timer 1 sec ~ 255 sec

Accessories

Wall Mount Kit x1
120W Power Adapter x1
Power Cord x1
Utilities & Drivers CD x1

Supports:



*Android only available on OpenSign platform

eTILE 22

The eTILE 22 is an ultra-thin commercial interactive all-in-one touch panel. Based on 3rd Generation Intel® Core™ technology, this powerful dynamic PC tile will enhance the interactive experience. Furthermore it incorporates a high quality 16:9 Full HD 21,5" LCD screen with a secure cable and port cover to minimize user tampering.

- + Ultra slim form factor (33mm)
- + Wide viewing angle VA panel
- + Low operating and installation costs
- + Robust PCT panel: dust and water proof (IP65)



eTILE 22

Dimensions	526 x 333 x 33 mm (WxHxD)	Touch Panel	PCT Multi Touch Surface (10 point touch) Pencil Hardness 7H per ASTM D3363 Pen Hitting: more than 20,000,000 times (loading 180g)
Weight	6kg	Speakers	Built-in 2W Stereo Speaker
Mass Storage	2.5" SATA III HDD x1 (optional 2.5" SATA SSD x1)	Webcam	Built-in 1.3M
CPU	Intel® 2nd and 3rd generation Intel® Core™ i3, i5, i7 mobile processor TDP≤35W	Security	Hidden keypad Secure cable and port cover Concealed on/off controls
Chipset	Intel® QM77	System I/O	DC 19.5V Jack x1 RS232 Port (Monitor) x2 HDMI Out Port x1 RJ45 LAN Jack x1 USB 2.0 x6 USB 3.0 x2 Line-out x1, Mic-in x1
Memory	Supports: 2 x DDRIII SO-DIMM (Max 8G)	Front Panel	IP65 grade Dust- & Waterproof
LAN	Single Intel Gigabit Ethernet 10/100/1000 Built-in WiFi antenna (optional Wi-Fi card b/g/n)	Watchdog Timer	1 sec ~ 255 sec
Audio	Realtek ALC886	Accessories	Wall Mount Kit x1 120W Power Adapter x1 Power Cord x1 Utilities & Drivers CD x1
Mini-Card Slot	Full size x1 (support mSATA), Half size x1		
LCD	Default Resolution : 21.5" (1920x1080) Maximum Brightness : 250 Nits (up to 700 Nits on request)		
Aspect Ratio/Resolution	16:9/Full HD		

Supports:



*Android only available on OpenSign platform

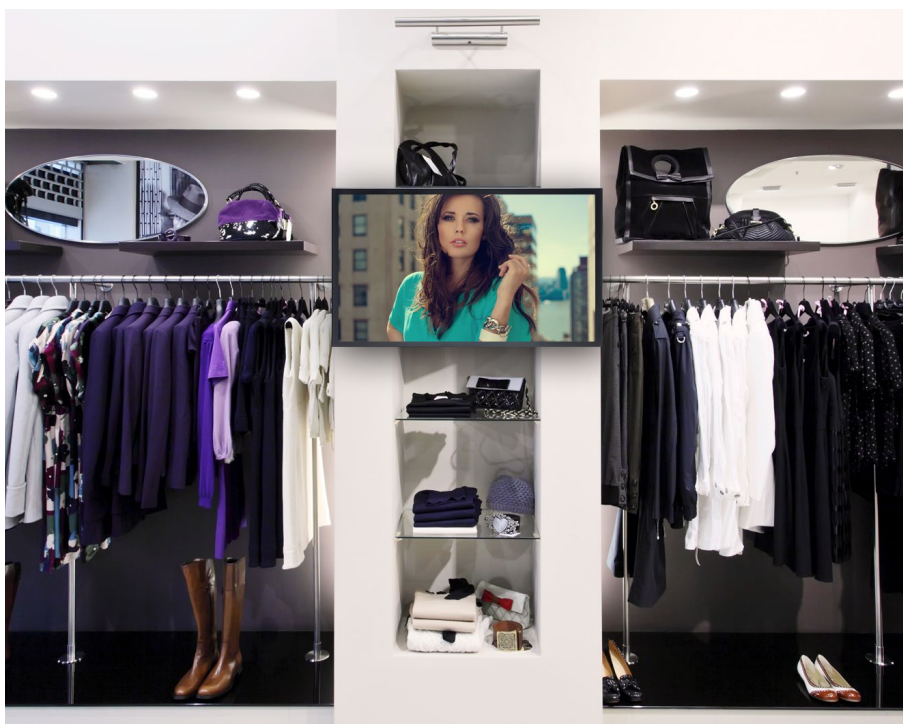
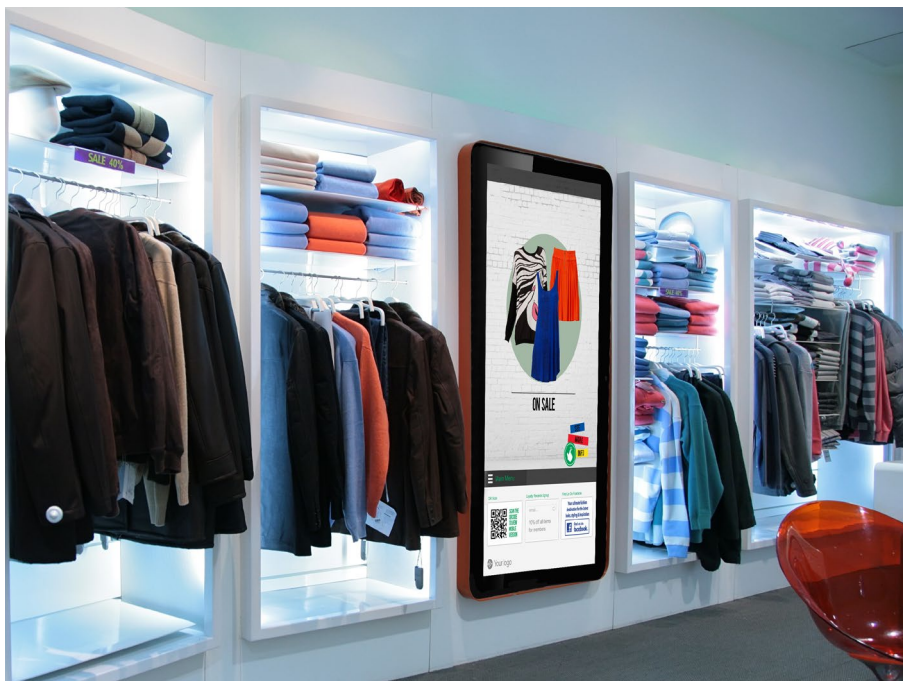




Displays

The AOPEN Digital Mosaic (ADM) is a range of thin touch and nontouch Full HD Vertical Alignment (VA) displays, with an optimal viewing angle for both portrait and landscape mode. The ADM range has optional proprietary high precision recessed & non-recessed wall mount solutions, ideal for creating videowalls in a variety of shapes and sizes.

AOPEN's range of displays and wall mounts (* accessories section page 33-34) provide a secure, easy to install and aesthetically pleasing solution for any environment.

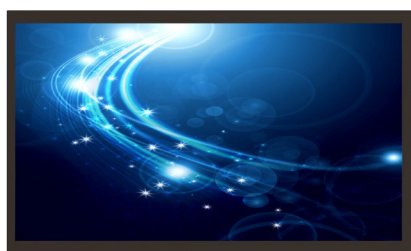




ADM DT22M

A 21.5" display specially designed for creative retailers looking for an eye-catching display. Ideal for playing video or displaying advertising in both horizontal and vertical alignment

- + Easy installation: no need for an enclosure or kiosk, the ADM display can simply be mounted on, or in the wall using various wall mount solutions
- + Robust VA panel
- + Aesthetics: slim form factor
- + True flat surface: easy to clean
- + Ideal viewing angle for both portrait and landscape mode



ADM DT22M

Panel Size	21.5"	Power Interface	19V Power Adapter (when powered on less than 36W power consumption, in stand-by mode less than 0.5W power consumption)
Bezel Size	Top & Bottom Bezel: 13.6mm Left & Right Bezel: 10.9mm	Signal Connector	DVI-I & VGA Display Interface
Dimensions	499x296x35.7mm	LCD OSD Settings	Keypad Settings for Brightness & Contrast
Weight	4.8kg	Audio	Line-in Audio Jack, Internal 2W Speaker
Display	Vertical Alignment (VA) Full HD Display with back light LED design	Surface Treatment	Slim Bezel, True Flat Panel Design, 3H Hardness
Resolution	1920 x 1080	Operating Temperature	0 ~ 50°
VA Panel		Storage Temperature	-20 ~ 60°
Brightness	250 Nits	Relative Humidity	90% RH
Touch Panel	N/A	MTBF	30,000 hours
Touch Control Driver	N/A	Certification	CE (including ERP)/FCC/LVD
Optical Response Time	N/A		

ADM DT22MT

A 21.5" display with touch capabilities built for the digital signage and POS market to maximize the media entertainment experience and increase customer interaction.

- + Easy installation: no need for an enclosure or kiosk, the ADM display can simply be mounted on, or in the wall using various wall mount solutions
- + Robust VA panel
- + Aesthetics: slim form factor
- + True flat surface: easy to clean
- + Ideal viewing angle for both portrait and landscape mode



ADM DT22MT

Panel Size	21.5"	Power Interface	19V Power Adapter (when powered on less than 36W power consumption, in stand-by mode less than 0.5W power consumption)
Bezel Size	Top Bezel: 25.29mm / Bottom Bezel: 29.5mm Left & Right Bezel: 19.38mm	Signal Connector	DVI-I & VGA Display Interface RS232 I/O Port USB 2.0 Port
Dimensions	516x323x37mm	LCD OSD Settings	Keypad Settings for Brightness & Contrast
Weight	5kg	Audio	Line-in Audio Jack, Internal 2W Speaker
Display	Vertical Alignment (VA) Panel Full HD Display with back light LED design	Surface Treatment	Slim Bezel, True Flat Panel Design, 7H Hardness
Resolution	1920 x 1080	Operating Temperature	0 ~ 50°
VA Panel Brightness	250 Nits	Storage Temperature	-20 ~ 60°
Touch Panel	PCT Multi Touch Surface (10 point touch) Finger & Capacitive Stylus Wake on Touch	Relative Humidity	90% RH
Touch Control Driver	Microsoft Windows & Android Compatible	MTBF	30,000 hours
Optical Response Time	16ms	Certification	CE (including ERP)/FCC/LVD



Accessories

AOPEN has developed a range of innovative solutions designed to meet the exact needs of our clients in different areas of specialization.

AOPEN clients can rely on a partner with solutions that meet a wide range of industry requirements. Our products deliver design flexibility with unparalleled quality control. AOPEN offers a wide variety of accessories to compliment your AOPEN solutions. Ranging from server rack solutions, to wireless kits and mounting applications.

- + Server Rack Solutions
- + Digital Elements
- + Mounting Solutions
- + Optional Kits

Engine Core

Consolidate multiple Digital Engine devices with the Engine Core. An innovative way to protect up to seven systems from dust and unwanted access, and simultaneously provide 19" rack mountability. The Engine Core also provides extra cooling and cable management.

An Engine Core combined with AOPEN Digital Engine devices and the specially designed Digital Element Modules make it a secure, versatile, green IT powerstation.

- + Fit up to 7 systems in a 19" server rack
- + Easy installation & maintenance
- + No special power supplies or cables required



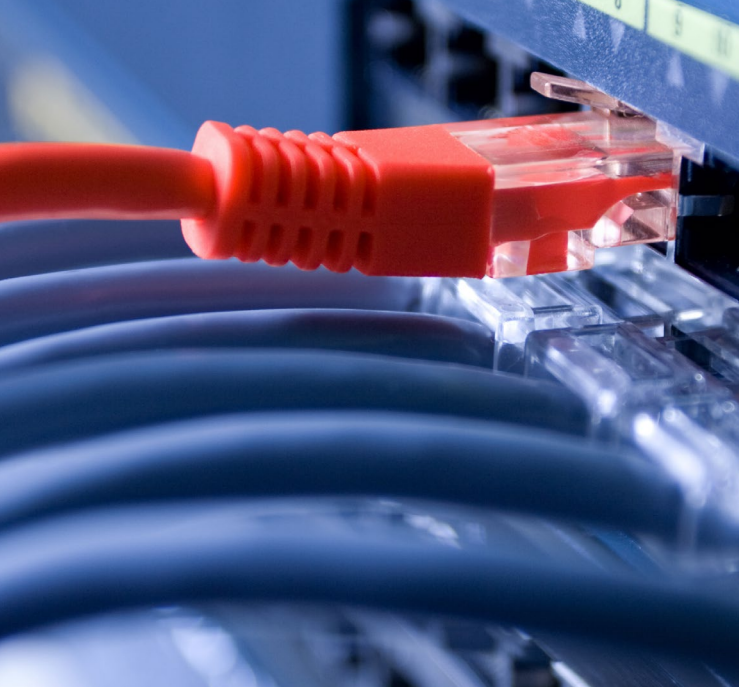
Engine Core 200

- + Chassis dimension: 65(H) x 449(W) x 305(D)mm
- + Accommodate up to 2 Digital Engine devices (including adapter 90W or 65W)
- + Detachable front handle for rack mount or stand alone usage
- + Material made of SECC

Engine Core 700



- + Chassis dimension:
 - Dual purpose for rack mount or as a stand alone unit
 - 178(H) x 482(W) x 571(D)mm (Rack mount, w/handle)
 - 178(H) x 426(W) x 555(D)mm (Stand alone, w/o handle)
- + Fit up to 7 Digital Engine devices and power adapters
- + Power 7 Digital Engine devices with one AC power cord
- + 3 system cooling fans (12cm)
- + Front panel with key lock
- + Internal detachable frame x 1 (for device expansion)
- + Replaceable dust filter behind the front panel
- + Detachable front handle for rack mount or stand alone usage
- + Material made of SECC



Digital Elements

The Digital Elements peripheral units have been created to cater to unique requests from the market. They continue in the line of AOPEN's unique small form factor and can therefore be easily incorporated into the Engine Core solution.



C4-KVM Switch

Switch between up to four computing devices and control multiple systems with a single keyboard, monitor and mouse. This switch also allows you to share other peripherals like mass storage devices.

Model name: C4-KVM

Can be powered by RDM or adapter

Fully compatible with AOPEN Engine Core series

Can function as USB HUB

LED indicators for active selection

LED indicators for online systems

Hot key switching (e.g: ctrl+f2 switches to other system)

4 physical buttons to switch between systems

On screen display of status and system selected

VGA-In	x4	VGA-out	x1
USB 2.0	x4	USB host	x1



RDM

The RDM is a secure solution that allows redundancy management for multiple computing devices (up to six devices). Ensure that your systems stay up and running, regardless of the failing of single power adapters.

Model name: RDM

Replacement for redundant power supply

No expensive power module needed

Remote control of fans

Remote monitoring of status for alerting system administrator

Can also power other devices (AOPEN KVM & fans)

Audible alarm if a failure happens

LED status indicators

Fully compatible with AOPEN Engine Core series

Mounting Solutions

AOPEN offers a wide range of mounting solutions, for both screens and media players. Whether you are looking to mount a single screen to the wall, or to create entire video walls, AOPEN's precision mounting solutions are ideal in any situation.



Highly Adjustable Video Wall Mount

With this high precision wall mount you can create videowalls in any shape or size. Whether you are looking to create a symmetric or an asymmetric design, this wall mount provides you with the ideal tools to mount your AOPEN Digital Mosaic (ADM) displays on the wall.

- + A modular mount for unlimited video wall configurations
- + A micro-adjustment enabling feature which supports both lateral shift and tilt
- + Supports diversified (a)symmetric mounting combinations
- + Eliminates on-site installation calculations and potential guessing work with the easy-to-use guidelines provided.

This wall mount is also available in a bundled solution:

Synchronized Video Wall Solution

Ideal for creating a video wall for in-store advertising, this bundle offers four 22" ADM displays, one DE6140 media player to power them all and a highly adjustable videowall mount.

The ADM DT22M is a thin Full HD Vertical Alignment (VA) display (36mm thick), with an optimal viewing angle for both portrait and landscape mode.

The Digital Engine DE6140 is a compact, powerful device purpose-built for powering video walls and displaying dynamic content on multiple displays without compromising the quality of resolution.

This bundle offers:

- + Four ADM DT22M displays with robust VA panel and an ideal viewing angle for both portrait and landscape mode
- + High performance, ultra reliable media player with four HDMI outputs that can power four independent Full HD screens
- + Highly adjustable wall mount ideal for creating (a-)symmetric video walls



Recessed Wall Mount

In using the recessed wall mount you can easily integrate technology into your interior design by embedding your AOPEN Digital Mosaic (ADM) displays into a wall.

- + A modular recessed mount for unlimited video wall configurations
- + A micro-adjustment enabling feature which supports both lateral shift and tilt
- + Supports portrait & landscape mounting configurations

This wall mount is also available in a bundled solution:

Recessed Wall Mount Display Solution

Integrate technology into your interior design by embedding your ADM display into a wall. This bundle offers an ADM 22" screen, a DE35-HD media player and a recessed wall mount.

The ADM DT22M is a non-touch Full HD Vertical Alignment (VA) display, with an optimal viewing angle for both portrait and landscape mode.

The Digital Engine DE35-HD is a compact, powerful device purpose-built for the Digital Signage industry as a cost effective and graphically strong media player.

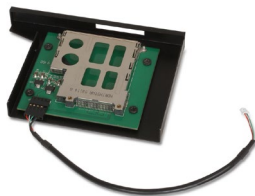
This bundle offers:

- + An ADM DT22M display with a robust VA panel and an ideal viewing angle for both portrait and landscape mode
- + High performance, ultra reliable media player with Full HD content playback and multi-display capabilities
- + A recessed wall mount solution, for guaranteed easy installation



	Floor Stand	VESA Kit (VM02)	Vertical Standholder (ST01)	Philips Smart Insert (with power cord)
AOPEN P/N	90.WT134.0010	60.ADE03.0110	59.ADE02.0010	90.00034.0410
Product Type	Floor Stand	Bracket	Bracket	Bracket
Mountability	AOPEN Proprietary Dimensions	VESA Standard	AOPEN Proprietary Dimensions	VESA Standard
Models Supported	All-in-One Display Models (WT & eTILE)	All Models Digital Engine (except DEX7150)	All Models Digital Engine (except DEX7150)	All Models Digital Engine (except DEX7150)

Optional Kits



	CF to 2.5" SATA HDD Bridge Board (SB01)	Express Card Reader (ER01)	WIFI Antenna (802.1 G)	WIFI Antenna (802.1 N)
Product Type	90.MA610.0410	90.ADE62.0010	59.8EX05.0010	59.MA602.0110
Slot	SATA	USB	N/A	N/A
Models Supported	All Digital Engine Models	DE67-HA(I), DE7000	All Digital Engine Models	All Digital Engine Models



	TV Tuner H339 DVBT W/ANT	Wireless WP- ER116GN HH (802.11b/g/n), half size	Wireless WP- ER116GN FS (802.11b/g/n), full size	Dust proof cover and filter
Product Type	60.MP610.0020	60.MP6WF.0020	60.MP6WF.0010	60.ADED3.0020
Slot	Mini-Card	Mini-Card	Mini-Card	N/A
Models Supported	All Digital Engine Models	All Digital Engine Models	With extension bracket, for all Digital Engine Models	All Digital Engine Models



3G M2M PACKAGE A1(3G card, 3G antenna and SIM card)	
Product Type	491.00016.0010
Slot	Mini-Card
Models Supported	All Digital Engine, Warm-touch & eTILE Models

Contact Us:
request@aopen.com
www.aopen.com

AOPEN Europe

Stadionlaan 151-153
5246 JT Rosmalen
The Netherlands

Tel: (+31) 73 646 6400



AOPEN North & South America

2890 Zanker Road, Suite 101
San Jose, CA 95134
USA

Tel: (+1) 408-586-1201

AOPEN Asia & Pacific

5F., No.15, Ln. 128, Sinhu 1st
Rd., Neihu District, Taipei City
114, Taiwan (R.O.C.)

Tel: (+886) 2 7710 1195

AOPEN Europe

Stadionlaan 151-153
5246 JT Rosmalen
The Netherlands

Tel: (+31) 73 646 6400

AOPEN China

NO. 1698, Yishan Road,
301 Room, Xing Di Building,
Shanghai, China

Tel: (+86) 216 225 8622

AOPEN Australia & New Zealand

Level 2, 6 Palmer Parade
Cremorne, Victoria
3121, Australia

Tel: (+61) 1300 364 389

AOPEN Japan

3F, Imai-Building 3-2-14,
Sotokanda Chiyoda-ku, Tokyo
101-0021 Japan

Tel: (+81) 352 981 668