



# Protect your fleet with simple, policy-based print security

Grow your business the secure way—with HP Imaging and Printing Security Center, an HP JetAdvantage security solution



Safeguard your fleet with the solution Buyers Laboratory (BLI) calls trailblazing.<sup>1</sup> With HP Imaging and Printing Security Center, many tedious tasks can be automated, so you can free up time for your IT staff and protect the data and documents that matter most to your business.

## Your business faces security challenges every day

Your company is continuously creating confidential, valuable data that's crucial to running your business. And you're probably using multiple security methods—including authentication, encryption, and monitoring—to protect this data on your networks, PCs, and servers. But is your printing and imaging environment as secure as the rest of your infrastructure? The security exposure and associated costs can be high, whether it's from unattended documents on a printer, sensitive data processing from the computer to the device, or confidential information on device hard drives. To help keep your business protected, you need a solution that simplifies and strengthens security throughout your printing and imaging environment, saving your business time and money that can be better spent elsewhere.

## An industry first in security management

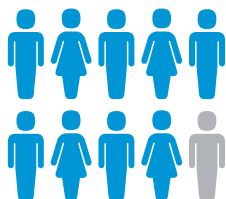
That's why HP developed HP Imaging and Printing Security Center (IPSC), a streamlined, policy-based approach to securing HP printing and imaging devices. With HP IPSC, you can improve the security of your HP printing and imaging fleet before you experience the stress of a data breach—helping protect your devices, and the information that keeps your company running.

HP IPSC offers a simple, intuitive process for securing your fleet. Efficiently deploy and monitor devices by applying a single security policy across the fleet, and secure new HP devices as soon as they are added to your network with HP Instant-on Security.<sup>2</sup> Actively maintain and verify compliance with your defined security policies using HP IPSC's automated monitoring and risk-based reporting. Rely on the automatic deployment and updating of identity certificates that strengthen information security while significantly reducing administrative overhead.

Nearly

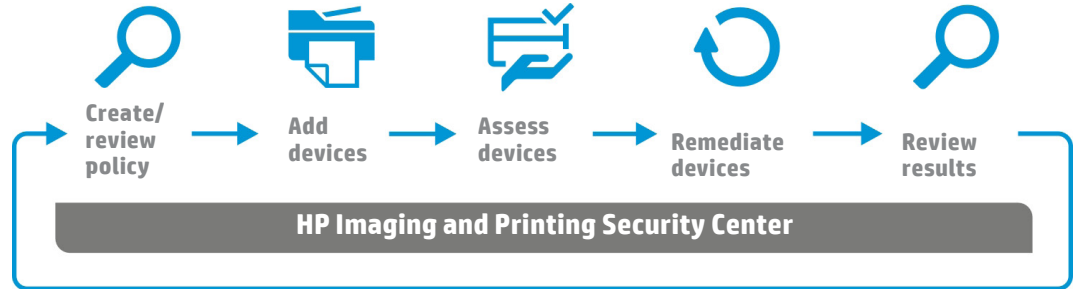
**90%**

of enterprises say they have suffered at least one data loss through unsecured printing



### How HP IPSC secures your fleet

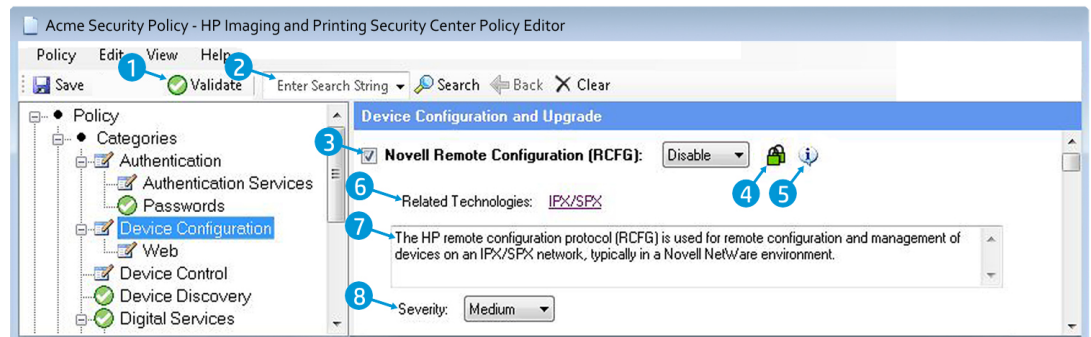
HP IPSC offers a holistic approach to HP fleet security that strengthens compliance and reduces risk.



## Provide fleet security with effortless policy creation

HP IPSC includes policy creation and editing features that make it a snap to apply customer-defined security policies across a fleet of HP printing and imaging devices.

- **Single policy**—Intuitive to set up and use, the HP IPSC interface helps you establish a single security policy and quickly apply it to your HP printing and imaging fleet. A single policy allows you to streamline the process of securing devices, regardless of the type or model of product.
- **HP IPSC Base Policy**—Easily create a security policy for your print environment using the HP IPSC Base Policy template. The template provides a baseline approach for securing a common enterprise printing environment, but is easily tailored to meet individual security policy requirements. The template combines settings from the U.S. National Institute of Standards and Technology-approved HP Security Best Practices Checklist with customer input on the security settings necessary to create a secure, yet productive print environment.<sup>3</sup>
- **HP Policy Editor**—Modify your security policies to best suit changing company needs, regulations, or industry standards. The easy-to-use HP Policy Editor simplifies policy creation and changes with an intuitive rules engine that provides guidance and helps create a comprehensive policy for your environment.



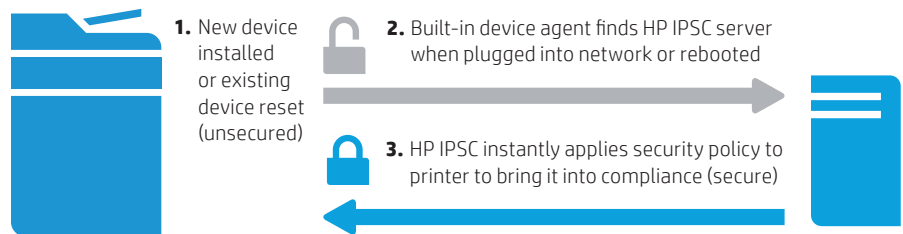
- |  |  |
|--|--|
| <ul style="list-style-type: none"> <li>1 Policy validation ensures no errors prior to use in assessment and remediation</li> <li>2 Policy feature search</li> <li>3 Select to have the feature included in policy</li> <li>4 HP security recommendations (icon alerts for vulnerability of setting)</li> </ul> | <ul style="list-style-type: none"> <li>5 Policy constraint information</li> <li>6 Hyperlink for quick access to related features</li> <li>7 Policy feature description</li> <li>8 Severity of the feature's security risk when out of compliance (customizable)</li> </ul> |
|--|--|

## Connect devices to your policy in a variety of ways

It's easy to add HP devices to HP IPSC.

- Add many devices by importing a .txt or .xml file with device IP addresses or host names, including .xml exports from HP Web Jetadmin.
- Use the HP Instant-on Security feature to automatically add each HP device into IPSC as soon as it is connected to your network or from reset without any intervention. Unique to HP IPSC, HP Instant-on Security also immediately configures devices to be compliant with your specific corporate security policy—saving you time and minimizing risk.

### HP Instant-on Security



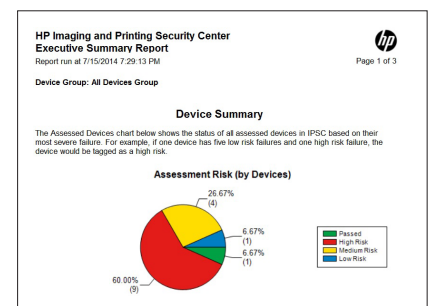
## Maximize your investments with proactive compliance

HP IPSC helps maintain compliance with ongoing assessments and automated remediation. You decide how often you want to ensure your devices are in compliance with your security policies. Daily, weekly, or monthly—it's up to you.

- **Assessment**—During the scheduled assessment, HP IPSC runs in the background and verifies your fleet's security settings against a specific policy. The assessment process then identifies and reports any noncompliant features.
- **Remediation**—HP IPSC automatically applies the correct policy settings to any noncompliant features recognized during the assessment. The compliant setting is assessed again to confirm it was applied successfully.

## Reduce risk with comprehensive security fleet reporting

Protect your information with built-in reporting tools. Users can run summary reports on the risk levels of the fleet, while also being able to see specific risks by device or security setting. HP IPSC verifies and documents compliance to your active security policies.



Simple, intuitive risk assessment

## Protect your workflow with fleet management of certificates

Certificates are vital to protecting the flow of information to and from your devices. They are used to prove identity and encrypt data, enabling secure communication between trustworthy entities. However, customers who want to secure their print devices are faced with several challenges when it comes to certificates. Manually installing unique certificates can be an error-prone, laborious, and time-consuming task—up to 15 minutes per device. This causes many customers to opt out of using certificates entirely or maintaining them properly.

HP IPSC's latest innovation streamlines this process by deploying unique identity certificates across your fleet, continuously monitoring them to ensure they remain valid, and automatically replacing revoked or expired certificates.<sup>2</sup>

HP IPSC efficiently implements and updates both ID and CA certificates—helping increase the security of your infrastructure, applications, and device communications.

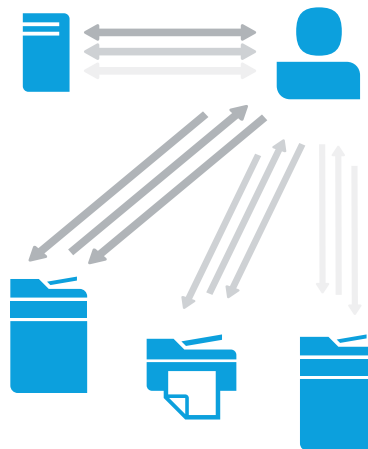
- **Quick installation**—Install unique identity certificates across your fleet of HP devices with less administrative overhead than manually installing certificates on one device.
- **Easy integration**—Integrate certificates into your existing HP IPSC policy and standard assessments and remediations.
- **Automatic renewal and updates**—Use automatic assessment and remediation to detect and renew certificates before they expire, and replace revoked certificates with no human intervention.
- **Informative feedback**—Access reporting on certificate validity, and troubleshoot problems to resolve infrastructure issues via detailed HP IPSC recommendations.

### Automatic certificate management

Make it easier for IT administrators to manage the certificate process—and help save your business time and money.

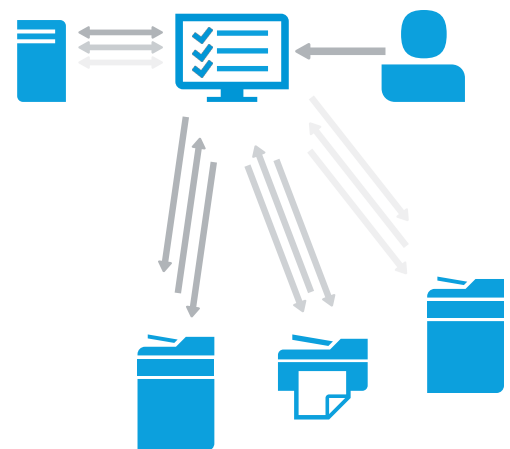
#### Before

Manual, time-consuming, and error-prone process required on each device



#### After

Simple, efficient, one-time setup for the entire fleet with HP IPSC



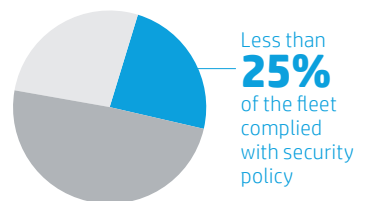
## How can this easy-to-use solution benefit you?

HP IPSC is a versatile security solution that can apply to a variety of contexts and business situations.

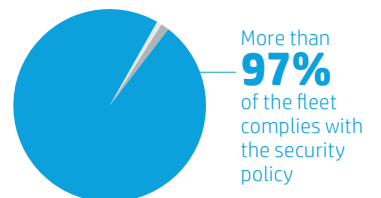
For example, financial services firms know that protecting client information is crucial to the success of their business, and is required by industry regulations. However, with print fleets that often number in the thousands, maintaining security consumes a substantial amount of administration overhead.

With HP IPSC, financial services firms can save time and money by scheduling a daily assessment and remediation of their HP printing and imaging fleet. This helps ensure that the fleet remains compliant with a company's security policy, while also freeing up the IT team to focus on other activities. Administrators can also print or save built-in fleet, device, or feature-level reports for proof-of-policy compliance, making it easy to verify that client information is safe and secure.

#### Before HP IPSC



#### After HP IPSC



## Technical specifications

<b>Supported network operating systems</b>	Microsoft® Windows® 8.1 (32 and 64 bit), Windows 8 (32 and 64 bit), Windows 7 (32 and 64 bit), Windows Server® 2008 R2 (64 bit), Windows Server 2012 (32 and 64 bit), Windows Server 2012 R2 (32 and 64 bit)
<b>Supported databases</b>	Microsoft SQL Server® 2008 R2 Express (provided with HP Imaging and Printing Security Center), SQL Server 2012 Express, SQL Server 2008 R2 or 2012
<b>Supported devices</b>	<p><b>HP LaserJet:</b> 2300, 2300L, 2420^, 2430^, 4000, 4050, 4100, 4200, 4200L, 4240^, 4250^, 4300, 4350^, 5100, 5200^, 8150, 9000, 9040^, 9050^, P2055~, P3005^, P3015*, P4014*, P4015*, P4515*, M201~, M401~, M601*, M602*, M603*, M701~, M706~, M712*, M806*</p> <p><b>HP LaserJet MFP:</b> M3027 MFP*, M3035 MFP*, M4345 MFP*, M4349 MFP*, M4555 MFP*, M5025 MFP*, M5035 MFP*, M5039 MFP*, M9040 MFP*, M9050 MFP*, M9059 MFP*, 4100 MFP, 4345 MFP^, 9000 MFP, 9000L MFP, 9040 MFP^, 9050 MFP^, M225 MFP~, M425 MFP~, M435 MFP~, M521 MFP~, M525 MFP*, M525 flow MFP*, M630 MFP*, M630 flow MFP*, M725 MFP*, M830 flow MFP*</p> <p><b>HP Color LaserJet:</b> CP3505*, CP3525*, CP4005, CP4025*, CP4525*, CP5525*, CP6015*, 3000^, 3700, 3800^, 4600, 4650, 4700^, 5500, 5550^, 9500, M451, M551*, M651*, M750*, M855*</p> <p><b>HP Color LaserJet MFP:</b> CM3530 MFP*, CM4540 MFP*, CM4730 MFP*, CM6030 MFP*, CM6040 MFP*, CM6049 MFP*, 4730 MFP^, 9500 MFP, M375 MFP~, M475 MFP~, M476 MFP~, M570 MFP~, M575 MFP*, M575 flow MFP*, M680 MFP*, M680 flow MFP*, M775 MFP*, M880 flow MFP*</p> <p><b>HP OfficeJet:</b> 251dw~, X451dw~, X551dw~, X555*</p> <p><b>HP OfficeJet MFP:</b> 276dw MFP~, X476dw MFP~, X576dw MFP~, X585 MFP*, X585 flow MFP*</p> <p><b>HP other:</b> Digital Sender DS 9200C^, DS 9250C*, 8500fn1*</p> <p><b>HP Jetdirect accessories:</b> 620n (V.40.xx or later), 635n (V.40.xx or later), 2800w~, 640n, 695nw</p> <p>HP recommends upgrading to the latest HP firmware to ensure you have the latest security features.</p> <p>* These devices support the HP IPSC Instant-on Security feature via an internal HP Jetdirect interface. A minimum device firmware is required (see product release notes for firmware date codes).</p> <p>^ These devices support the HP Instant-On Security feature with HP Jetdirect 640n or HP Jetdirect 695nw installed in the device.</p> <p>~ These devices are currently not supported by the certificate management feature.</p>
<b>System requirements</b>	<p><b>Server requirements:</b> 2.33 GHz dual-core processor minimum, 3 GB RAM minimum (32-bit systems), 4 GB RAM minimum (64-bit systems)</p> <p><b>Client requirements:</b> PC with 1.8 GHz processor minimum, 2 GB RAM minimum (32-bit systems), 4 GB RAM minimum (64-bit systems)</p> <p><b>Storage requirements:</b> Minimum 4 GB available disk space. The amount of database storage required varies for HP IPSC and is based on the following: number of devices assessed, size of policy to assess against, number of policies used to assess, frequency of assessments, and recommendations from assessments. It is highly recommended that a full instance of SQL be used when managing more than 250 devices.</p>
<b>Performance</b>	HP has tested up to 10,000 devices on a server (higher amounts may be possible), and has achieved 1,500 device assessments per hour using the HP IPSC Base Policy.
<b>Supported languages</b>	English



**Hewlett-Packard Company**  
Imaging & Printing Security Center 2  
Outstanding Achievement in  
Security Solutions



## Ordering information

### Product

- HP Imaging and Printing Security Center software license:
  - 50 Device License (A6A38BAE)
  - 250 Device License (A6A39BAE)
  - 1,000 Device License (A6A40BAE)
  - 5,000 Device License (A6A41BAE)Licenses are perpetual and can be stacked in any combination to reach desired quantity of devices.

### Support and maintenance

- One-year HP Care Pack:
  - 50 Devices (U1Q16E)
  - 250 Devices (U1Q18E)
  - 1,000 Devices (U1Q20E)
  - 5,000 Devices (U1Q22E)
- Three-year HP Care Pack:
  - 50 Devices (U1Q17E)
  - 250 Devices (U1Q19E)
  - 1,000 Devices (U1Q21E)
  - 5,000 Devices (U1Q23E)

## For more information

To learn more about making HP Imaging and Printing Security Center an integral part of your company's overall IT security strategy or to obtain a free trial, please visit [hp.com/go/ipsc](http://hp.com/go/ipsc), contact your HP representative, or contact an HP Document Solutions Specialist.

Learn more at  
[hp.com/go/ipsc](http://hp.com/go/ipsc)

<sup>1</sup> BLI Security Solutions Assessment, March 2013. For details, see [hp.com/go/ipsc](http://hp.com/go/ipsc).

<sup>2</sup> Available on select product models and firmware versions. See page 5 for a list of supported products, or visit [hp.com/go/ipsc](http://hp.com/go/ipsc) for details.

<sup>3</sup> This tool is provided for general comparison only. This information is based on manufacturers' published and internal specifications, and proprietary data and algorithms. The information is not guaranteed accurate by Hewlett-Packard Company. Users can customize the security policies used in the analysis, which will affect the results. Actual results may vary.

Sign up for updates  
[hp.com/go/getupdated](http://hp.com/go/getupdated)



Share with colleagues



Rate this document

