

SUBMITTAL RECORD

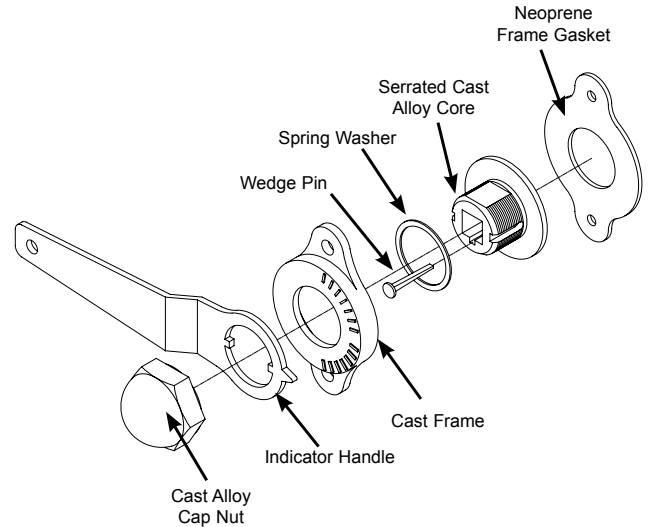
JOB _____
 LOCATION _____
 SUBMITTED TO _____
 SUBMITTAL PREPARED BY _____
 APPROVED BY _____
 DATE _____



Submittal Form
SPECLINE®
SRH/SR INDICATOR
HANDLE STYLE
REGULATOR SET

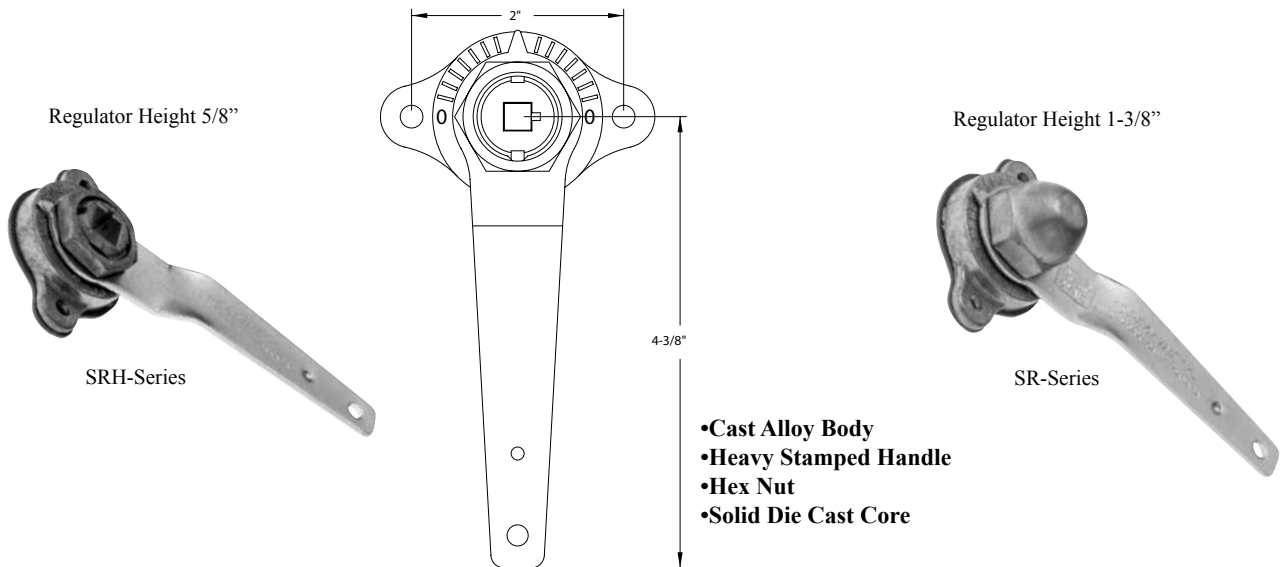
SPECLINE® DAMPER REGULATORS
MINIMUM LEAKAGE DAMPER REGULATORS

Specline Regulators are designed for minimum leakage applications. Each regulator is comprised of a frame, an indicator handle, a serrated cast alloy core and a cast alloy nut. Serrations on the cast alloy core mesh with serrations in the frame to firmly lock the regulator in position. A spring washer situated between the core and the cast frame allows for smooth non-binding adjustment. A wedge pin is used to eliminate rattle and take up slack between the regulator and the damper shaft.



- All SR and SRH type regulators include a cast alloy frame and a neoprene frame gasket.

INDICATOR HANDLE REGULATOR SET WITH HEX NUT AND ACORN NUT



SRH SERIES HANDLE SET CAST			
ITEM#	MODEL	SHAFT SIZE & NUT	QUANTITY
8011	SRH248	1/4" Hex Nut	10 Per Ctn
8013	SRH288	3/8" Hex Nut	10 Per Ctn
8015	SRH228	1/2" Hex Nut	10 Per Ctn

SR SERIES HANDLE SET CAST			
ITEM#	MODEL	SHAFT SIZE & NUT	QUANTITY
8002	SR148	1/4" Acorn Nut	10 Per Ctn
8004	SR388	3/8" Acorn Nut	10 Per Ctn
8006	SR128	1/2" Acorn Nut	10 Per Ctn

