



## Description

Altech's Hyper Series Area Light LED fixture debuted at Lightfair in 2018. With a higher lumen output, it is sure to provide any project with more than enough coverage.



Not all product variations listed on this page are DLC Premium qualified. To ensure that a specific model is qualified, visit [www.designlights.org/search](http://www.designlights.org/search)

## Applications

Auto Dealerships	Outdoor Courts	Outdoor Malls
Parking Lots	Sports Fields	Public Parks

## Specs

Efficacy	165 lm/W
Input Voltage	100-277V
Finish	Bronze

## Details

IP Rating	IP67
EPA Rating	0.9
Materials	Die Cast Aluminum
Lens	Polycarbonate
L70 Life	150,000 Hours
Warranty	10 Years
CRI	70+
Qualification	UL, DLC Premium, FCC, CE, RoHS
Chip Man.	Philips
Whip Length (ft)	1.67'

## Electrical

Power Factor	0.99
Frequency	50/60 Hz
Max THD	10%
Operating Temp.	-40° F to 150° F -40° C to 65° C
Dimming	3 in 1 (Resistance, PWM, 0-10V)

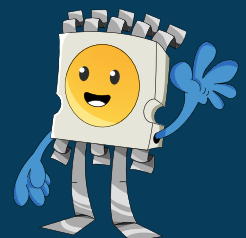
LED AREA LIGHT HYPER SERIES, LARGE

## Product Information

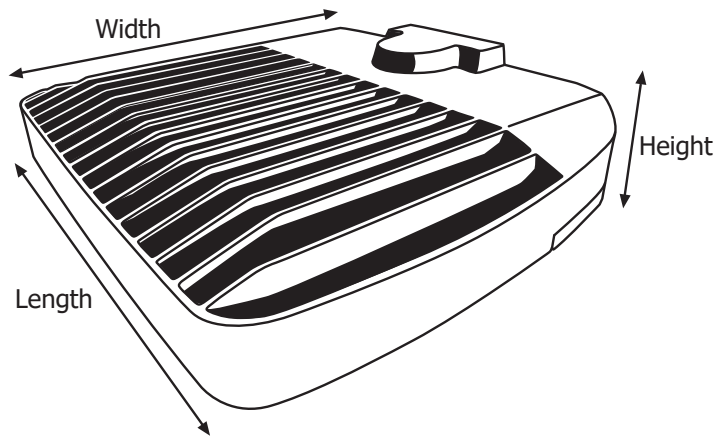
ORDERING/DLC #:	Wattage	CCT	Lumens	Equivalent
U-HALL-150W-30-D	150W	3000K	23,250 lm	750W MH
U-HALL-150W-40-D	150W	4000K	24,150 lm	750W MH
U-HALL-150W-50-D	150W	5000K	25,050 lm	750W MH
U-HALL-240W-30-D	240W	3000K	38,400 lm	1200W MH
U-HALL-240W-40-D	240W	4000K	39,840 lm	1200W MH
U-HALL-240W-50-D	240W	5000K	41,280 lm	1200W MH
U-HALL-300W-30-D	300W	3000K	47,400 lm	1500W MH
U-HALL-300W-40-D	300W	4000K	49,200 lm	1500W MH
U-HALL-300W-50-D	300W	5000K	51,000 lm	1500W MH
U-HALL-400W-30-D	400W	3000K	60,000 lm	2000W MH
U-HALL-400W-40-D	400W	4000K	62,400 lm	2000W MH
U-HALL-400W-50-D	400W	5000K	64,800 lm	2000W MH

## Additional Notes

- 4000K and 5000K, 100-277V in BRONZE are stocked locally, check for ETA's
- Lifespan is more than 27 years operating 10 hours a day, based on L70 standards
- Altech Electronics reserves the right to make periodic improvements to our product specs



**Fixture Dimensions and Weight**



Length	Width	Height	Weight
19.75 in.	16.8 in.	4 in.	25 lb.
502 mm.	427 mm.	102 mm.	11.3 kg.

**Accessories and Options**

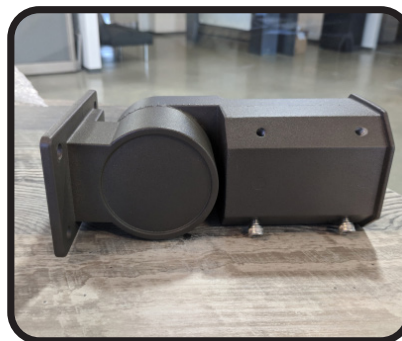


**Compatible with controls and integrations**

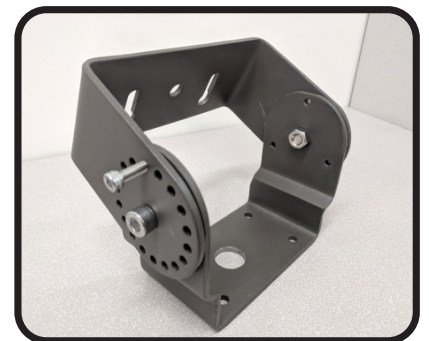
**Mounting Options**



**6" Extruded Arm Mount**



**Slip Fitter Mount**



**Trunnion Mount**

### Wiring Precaution

The international color scheme is brown (hot), blue (neutral) and green/yellow (ground) wiring. Always disconnect power when installing or troubleshooting. Consult a licensed technician.



### Fixture-to-Mount Installation

1. Match screw holes on the mount with the fixture. (Refer to image on the right)
2. Run the wire from the fixture through mount.
3. Hand-tighten the screws into place.
4. Tighten the screws with a tool to secure it.
5. Installation complete.

