

Grinding wheel adapters

and
Accessories



good better BLUE

GDS[®]
Made in Germany



Grinding wheel adapters and accessories

Precision grinding requires an optimal spindle and flawless grinding wheel, both of which depend on a perfect grinding wheel adapter.

“Our quality for your success”

We adapt to your requirements and guarantee our quality.

CONTENTS

March 2016

ANCA.....	4-17
Deckel/ISOG	18-19
EWAG	20-23
Haas	24-28
Hawema	29-30
Reinecker	31-32
Rollomatic	33-38
Saacke	39-41
Schneeberger	42-45
Schütte	46-49
SMP	50-51
Strausak	52-57
TTB	58
Walter	59-66
Adapters for dressing, presetting etc.	67-68
SK40 and SK50 adapters	69
Reduction adapters for wheel adapters.....	70
GDS sales and service partners	71

Our grinding wheel adapters are characterised by the following:



Maximum taper accuracy by using constantly controlled and calibrated measuring equipment.



Absolute accuracy of fit and optimum radial and axial run-out.



Extreme load-bearing capacity due to the use of tempered material and the best heat treating processes.



Optimum surface quality and associated long-term dimensional stability and precision, as well as spindle protection as a result of finished surfaces.



Balanced models for improved grinding results and spindle life.

ANCA

Deckel/ISOG

EWAG

Haas

Hawema

Reinecker

Rollomatic

Saacke

Schneeberger

Schütte

SMP

Strausak

TTB

Walter

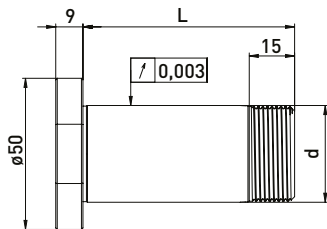
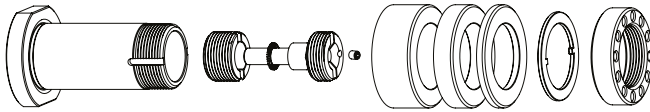
Zaro

Adapters

ANCA Internal taper 30 // Shaft $\varnothing 32$ mm // RS $\varnothing 50$ mm

For ANCA tool grinding machines with ring set $\varnothing 50$ mm
with integrated clamping and press-off system (M8 bolt)

GWA Internal taper 30 // $\varnothing 32$ mm // RS $\varnothing 50$ mm

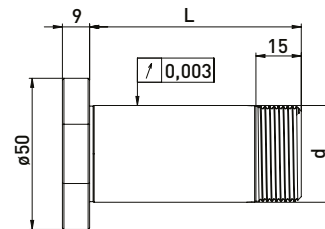
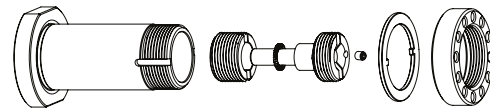


Delivered equipped:
Installation system, ring set $\varnothing 50$ mm, lock washer and clamping nut

Ring set $\varnothing 50$ mm

Item No.	Internal taper	d	L	B 20	B 10	B 4
300020612	30	32	53	1	1	2
300020622	30	32	70	1	2	4
300020632	30	32	85	2	2	3
300020642	30	32	100	2	3	4

GWA Internal taper 30 // $\varnothing 32$ mm // without RS



Delivered equipped:
Installation system, lock washer and clamping nut

Item No.	Internal taper	d	L
300020611	30	32	53
300020621	30	32	70
300020631	30	32	85
300020641	30	32	100

Accessories ANCA grinding wheel adapter Internal taper 30 // Shaft $\varnothing 32$ mm // Ring set $\varnothing 50$ mm

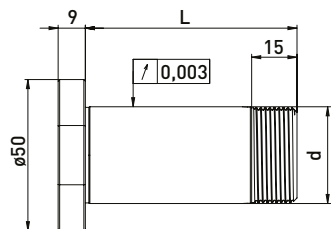
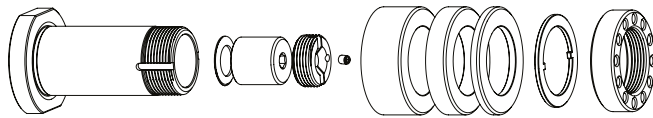
Item No.	Description	
350050010	Universal assembly device $\varnothing 50$	
350040030	Clamping nut wrench TK39 for ANCA nut	
350020102	ANCA installation system with M8 screw	
350060011	Assembly wrench set installation system ANCA (SW 6 + SW 2)	
750000001	Clamping wrench SW 6,0 x 150	

Item No.	Description	
350011220	Spacer Ring $\varnothing 50$ x $\varnothing 32$ x 20	
350011210	Spacer Ring $\varnothing 50$ x $\varnothing 32$ x 10	
350011204	Spacer Ring $\varnothing 50$ x $\varnothing 32$ x 4	
350030040	Lock washer $\varnothing 43$ x $\varnothing 32$ x 2	
350020050	Clamping nut ANCA M31,5 x 1,5 $\varnothing 47$ x 12	

ANCA Internal taper 30 // Shaft $\varnothing 32$ mm // RS $\varnothing 50$ mm

For ANCA tool grinding machines with ring set $\varnothing 50$ mm
with integrated clamping and press-off system (M14 x 1.5 nut)

GWA Internal taper 30 // $\varnothing 32$ mm // RS $\varnothing 50$ mm

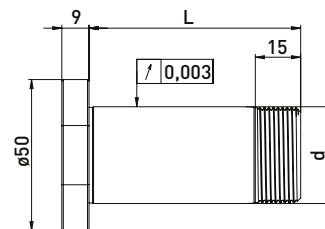
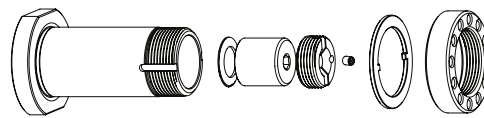


Delivered equipped:
Installation system, ring set $\varnothing 50$ mm, lock washer and clamping nut

Ring set $\varnothing 50$ mm

Item No.	Internal taper	d	L	B 20	B 10	B 4
300020212	30	32	53	1	1	4
300020222	30	32	70	1	2	4
300020232	30	32	85	2	2	3
300020242	30	32	100	2	3	4

GWA Internal taper 30 // $\varnothing 32$ mm // without RS



Delivered equipped:
Installation system, lock washer and clamping nut

Item No.	Internal taper	d	L
300020211	30	32	53
300020221	30	32	70
300020231	30	32	85
300020241	30	32	100

Accessories ANCA grinding wheel adapter Internal taper 30 // Shaft $\varnothing 32$ mm // Ring set $\varnothing 50$ mm

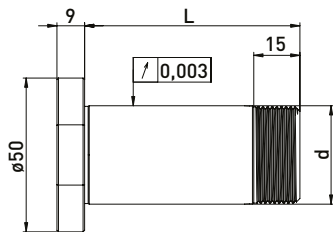
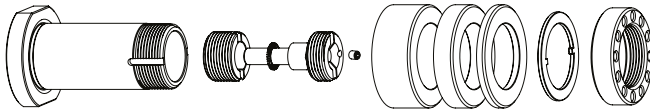
Item No.	Description	
350050010	Universal assembly device $\varnothing 50$	
350040030	Clamping nut wrench TK39 for ANCA nut	
350020101	Installation system with M14 x 1.5 nut	
350060011	Assembly wrench set installation system ANCA (SW 6 + SW 2)	
750000001	Clamping wrench SW 6,0 x 150	

Item No.	Description	
350011220	Spacer Ring $\varnothing 50$ x $\varnothing 32$ x 20	
350011210	Spacer Ring $\varnothing 50$ x $\varnothing 32$ x 10	
350011204	Spacer Ring $\varnothing 50$ x $\varnothing 32$ x 4	
350030040	Lock washer $\varnothing 43$ x $\varnothing 32$ x 2	
350020050	Clamping nut ANCA M31,5 x 1,5 $\varnothing 47$ x 12	

ANCA Internal taper 30 // Shaft $\varnothing 31,75$ mm (1¼) // RS $\varnothing 50$ mm

For ANCA tool grinding machines with ring set $\varnothing 50$ mm
with integrated clamping and press-off system (M8 bolt)

GWA Internal taper 30 // $\varnothing 31,75$ mm (1¼) // RS $\varnothing 50$ mm

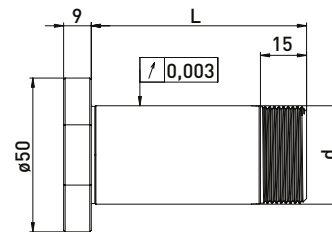
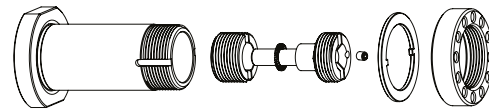


Delivered equipped:
Installation system, ring set $\varnothing 50$ mm, lock washer and clamping nut

Ring set $\varnothing 50$ mm

Item No.	Internal taper	d	L	B 20	B 10	B 4
300020512	30	31,75	53	1	1	2
300020522	30	31,75	70	1	2	4
300020532	30	31,75	85	2	2	3
300020542	30	31,75	100	2	3	4

GWA Internal taper 30 // $\varnothing 31,75$ mm // without RS



Delivered equipped:
Installation system, lock washer and clamping nut

Item No.	Internal taper	d	L
300020511	30	31,75	53
300020521	30	31,75	70
300020531	30	31,75	85
300020541	30	31,75	100

Accessories ANCA grinding wheel adapter Internal taper 30 // Shaft $\varnothing 31,75$ mm (1¼) // Ring set $\varnothing 50$ mm

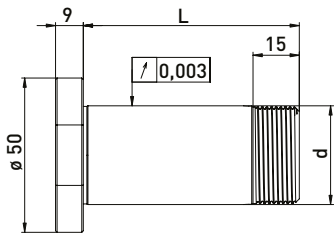
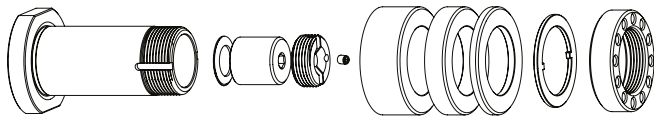
Item No.	Description	
350050010	Universal assembly device $\varnothing 50$	
350040030	Clamping nut wrench TK39 for ANCA nut	
350020102	ANCA installation system with M8 screw	
350060011	Assembly wrench set installation system ANCA (SW 6 + SW 2)	
750000001	Clamping wrench SW 6,0 x 150	

Item No.	Description	
350011120	Spacer Ring $\varnothing 50$ x $\varnothing 31,75$ x 20	
350011110	Spacer Ring $\varnothing 50$ x $\varnothing 31,75$ x 10	
350011104	Spacer Ring $\varnothing 50$ x $\varnothing 31,75$ x 4	
350030040	Lock washer $\varnothing 43$ x $\varnothing 32$ x 2	
350020050	Clamping nut ANCA M31,5 x 1,5 $\varnothing 47$ x 12	

ANCA Internal taper 30 // Shaft $\varnothing 31,75$ mm (1¼) // RS $\varnothing 50$ mm

For ANCA tool grinding machines with ring set $\varnothing 50$ mm
with integrated clamping and press-off system (M14 x 1.5 nut)

GWA Internal taper 30 // $\varnothing 31,75$ mm (1¼) // RS $\varnothing 50$ mm

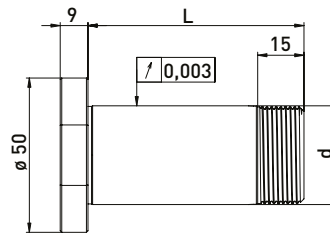
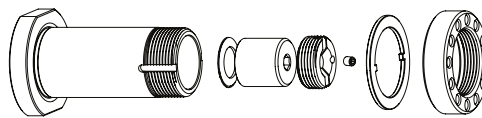


Delivered equipped:
Installation system, ring set $\varnothing 50$ mm, lock washer and clamping nut

Ring set $\varnothing 50$ mm

Item No.	Internal taper	d	L	B 20	B 10	B 4
300020112	30	31,75	53	1	1	2
300020122	30	31,75	70	1	2	4
300020132	30	31,75	85	2	2	3
300020142	30	31,75	100	2	3	4

GWA Internal taper 30 // $\varnothing 31,75$ mm // without RS



Delivered equipped:
Installation system, lock washer and clamping nut

Item No.	Internal taper	d	L
300020111	30	31,75	53
300020121	30	31,75	70
300020131	30	31,75	85
300020141	30	31,75	100

Accessories ANCA grinding wheel adapter Internal taper 30 // Shaft $\varnothing 31,75$ mm (1¼) // Ring set $\varnothing 50$ mm

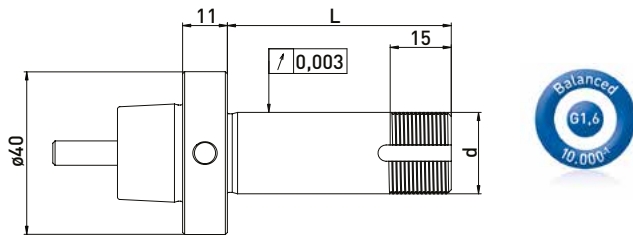
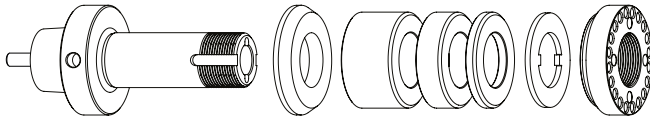
Item No.	Description	
350050010	Universal assembly device $\varnothing 50$	
350040030	Clamping nut wrench TK39 for ANCA nut	
350020101	Installation system with M14 x 1.5 nut	
350060011	Assembly wrench set installation system ANCA (SW 6 + SW 2)	
750000001	Clamping wrench SW 6,0 x 150	

Item No.	Description	
350011120	Spacer Ring $\varnothing 50$ x $\varnothing 31,75$ x 20	
350011110	Spacer Ring $\varnothing 50$ x $\varnothing 31,75$ x 10	
350011104	Spacer Ring $\varnothing 50$ x $\varnothing 31,75$ x 4	
350030040	Lock washer $\varnothing 43$ x $\varnothing 32$ x 2	
350020050	Clamping nut ANCA M31,5 x 1,5 $\varnothing 47$ x 12	

ANCA HSK-F40 // Shaft $\varnothing 20$ mm // RS $\varnothing 35$ mm

For ANCA tool grinding machines with ring set $\varnothing 35$ mm

GWA HSK-F40 // $\varnothing 20$ mm // RS $\varnothing 35$ mm



Delivered equipped:

Installation system, reducing washer, ring set $\varnothing 35$ mm, lock washer and clamping nut

Item No.	HSK	d	L	Ring set $\varnothing 35$ mm		
				B 20	B 10	B 4
300022012	HSK-F40	20	55	1	1	2
300022022	HSK-F40	20	72	1	2	3
300022032	HSK-F40	20	85	2	2	2
300022042	HSK-F40	20	95	2	3	2

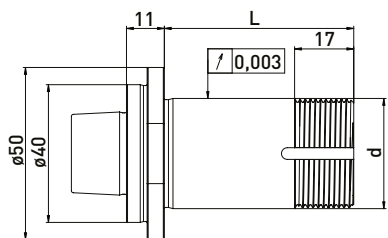
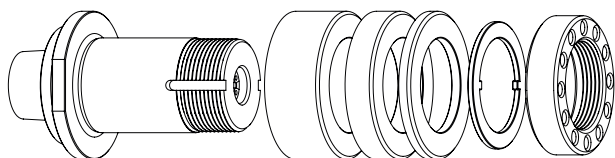
Accessories ANCA grinding wheel adapter HSK-F40 // Shaft $\varnothing 20$ mm // Ring set $\varnothing 35$ mm

Item No.	Description	
350050050	Assembly device HSK40 $\varnothing 40$	
350040010	Clamping nut wrench TK 27 for $\varnothing 20$	

Item No.	Description	
350011020	Spacer Ring $\varnothing 50 \times \varnothing 20 \times 20$	
350011010	Spacer Ring $\varnothing 50 \times \varnothing 20 \times 10$	
350011004	Spacer Ring $\varnothing 50 \times \varnothing 20 \times 4$	
350015006	Reducing washer $\varnothing 40 \times \varnothing 35 \times \varnothing 20 \times 6$	
350030050	Lock washer $\varnothing 50 \times \varnothing 20 \times 2$	
350020030	Clamping nut $\varnothing 35 \times 6$ M20x1	
350020070	Clamping nut - $\varnothing 35 \times \varnothing 40 \times 12$ M20x1 with balancing bores M4	

For ANCA tool grinding machines with ring set $\varnothing 50$ mm
with integrated clamping and press-off system M8 clamping screw
 (M6 bolt available on customer request)

GWA manual HSK-F40 // $\varnothing 31,75$ mm (1¼) // RS $\varnothing 50$ mm

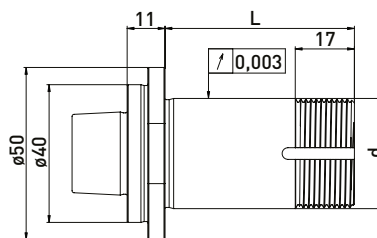
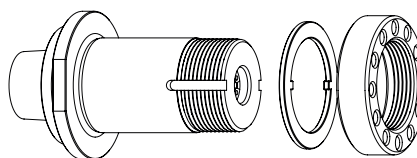


Delivered equipped:
 Installation system, ring set $\varnothing 50$ mm, lock washer and clamping nut

Ring set $\varnothing 50$ mm

Item No.	HSK	d	L	B 20	B 10	B 4
300023112	HSK-F40	31,75	55	1	1	3
300023122	HSK-F40	31,75	72	2	1	2
300023132	HSK-F40	31,75	85	2	2	3
300023142	HSK-F40	31,75	95	3	1	3



GWA manual HSK-F40 // $\varnothing 31,75$ mm // without RS



Delivered equipped:
 Installation system, lock washer and clamping nut

Item No.	HSK	d	L
300023111	HSK-F40	31,75	55
300023121	HSK-F40	31,75	72
300023131	HSK-F40	31,75	85
300023141	HSK-F40	31,75	95

Accessories ANCA grinding wheel adapter manual HSK-F40 // Shaft $\varnothing 31,75$ mm (1¼) // Ring set $\varnothing 50$ mm

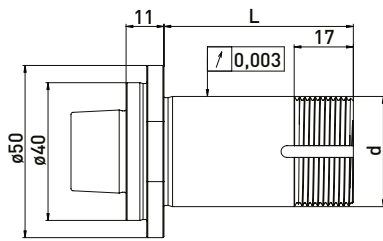
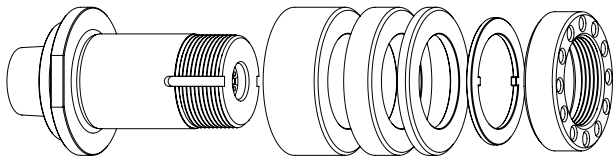
Item No.	Description
350050050	Assembly device HSK40 $\varnothing 40$ 
350040030	Clamping nut wrench TK39 for ANCA nut 

Item No.	Description
350011120	Spacer Ring $\varnothing 50 \times \varnothing 31,75 \times 20$ 
350011110	Spacer Ring $\varnothing 50 \times \varnothing 31,75 \times 10$ 
350011104	Spacer Ring $\varnothing 50 \times \varnothing 31,75 \times 4$ 
350030040	Lock washer $\varnothing 43 \times \varnothing 32 \times 2$ 
350020050	Clamping nut ANCA M31,5 x 1,5 $\varnothing 47 \times 12$ 

ANCA manual HSK-F40 // Shaft $\varnothing 32$ mm // RS $\varnothing 50$ mm

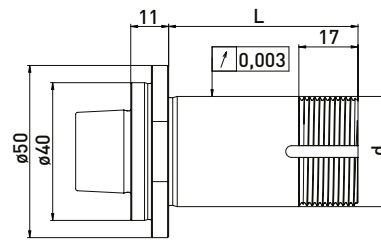
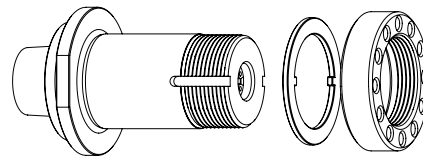
For ANCA tool grinding machines with ring set $\varnothing 50$ mm
with integrated clamping and press-off system M8 clamping screw
 (M6 bolt available on customer request)

GWA manual HSK-F40 // $\varnothing 32$ mm // RS $\varnothing 50$ mm



Delivered equipped:
 Ring set $\varnothing 50$ mm, lock washer and clamping nut

GWA manual HSK-F40 // $\varnothing 32$ mm // without RS



Delivered equipped:
 Lock washer and clamping nut

Ring set $\varnothing 50$ mm

Item No.	HSK	d	L	B 20	B 10	B 4
300023212	HSK-F40	32	55	1	1	3
300023222	HSK-F40	32	72	2	1	2
300023232	HSK-F40	32	85	2	2	3
300023242	HSK-F40	32	95	3	1	3

Item No.	HSK	d	L
300023211	HSK-F40	32	55
300023221	HSK-F40	32	72
300023231	HSK-F40	32	85
300023241	HSK-F40	32	95

Accessories ANCA grinding wheel adapter manual HSK-F40 // Shaft $\varnothing 20$ mm // Ring set $\varnothing 50$ mm

Item No.	Description
350050050	Assembly device HSK40 $\varnothing 40$
350040030	Clamping nut wrench TK39 for ANCA nut

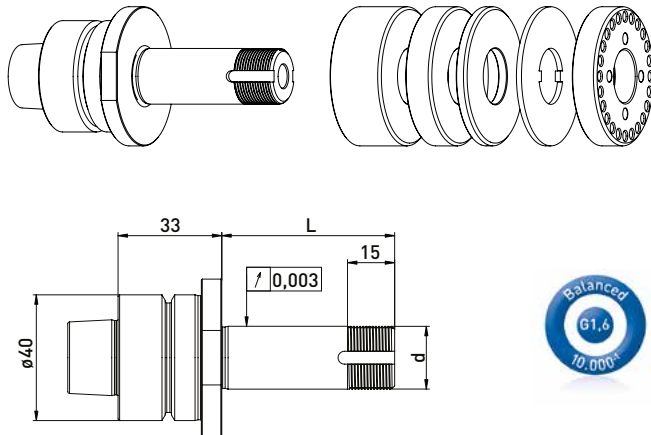


Item No.	Description
350011220	Spacer Ring $\varnothing 50 \times \varnothing 32 \times 20$
350011210	Spacer Ring $\varnothing 50 \times \varnothing 32 \times 10$
350011204	Spacer Ring $\varnothing 50 \times \varnothing 32 \times 4$
350030040	Lock washer $\varnothing 43 \times \varnothing 32 \times 2$
350020050	Clamping nut ANCA M31,5 x 1,5 $\varnothing 47 \times 12$



For ANCA tool grinding machines with ring set $\varnothing 50$ mm

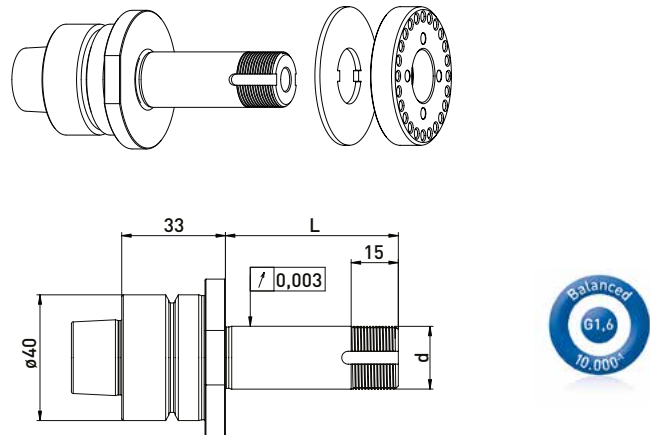
GWA automatic HSK-F40 // $\varnothing 20$ mm // RS $\varnothing 50$ mm



Delivered equipped:
Ring set $\varnothing 50$ mm, lock washer and clamping nut

Item No.	HSK	d	L	Ring set $\varnothing 50$ mm		
				B 20	B 10	B 4
300025012	HSK-F40	20	55	1	1	3
300025022	HSK-F40	20	72	2	1	2
300025032	HSK-F40	20	85	2	2	3
300025042	HSK-F40	20	95	3	1	3

GWA automatic HSK-F40 // $\varnothing 20$ mm // without RS



Delivered equipped:
Lock washer and clamping nut

Item No.	HSK	d	L
300025011	HSK-F40	20	55
300025021	HSK-F40	20	72
300025031	HSK-F40	20	85
300025041	HSK-F40	20	95

Accessories ANCA grinding wheel adapter automatic HSK-F40 // Shaft $\varnothing 20$ mm // Ring set $\varnothing 50$ mm

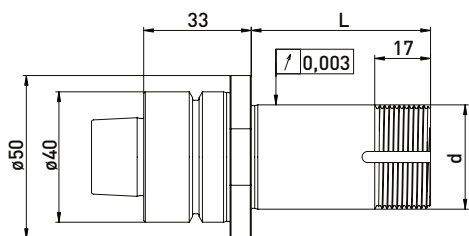
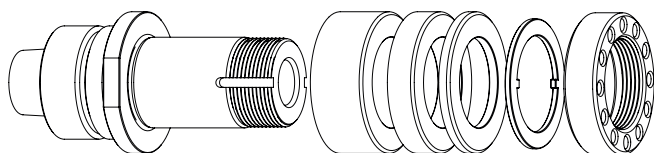
Item No.	Description	
350050050	Assembly device HSK40 $\varnothing 40$	
350040010	Clamping nut wrench TK 27 for $\varnothing 20$	
350020021	*Balancing weight pair for clamping nut $\varnothing 50$ // 100gmm	

Item No.	Description	
350011020	Spacer Ring $\varnothing 50 \times \varnothing 20 \times 20$	
350011010	Spacer Ring $\varnothing 50 \times \varnothing 20 \times 10$	
350011004	Spacer Ring $\varnothing 50 \times \varnothing 20 \times 4$	
350030010	Lock washer $\varnothing 50 \times \varnothing 20 \times 2$	
350020051	Clamping nut ANCA M20 x 1 $\varnothing 50 \times 9,5$	
350020020	*Clamping nut with balancing option $\varnothing 50 \times 8,5$ M20x1,0	

ANCA automatic HSK-F40 // Shaft $\varnothing 31,75$ mm (1¼) // RS $\varnothing 50$ mm

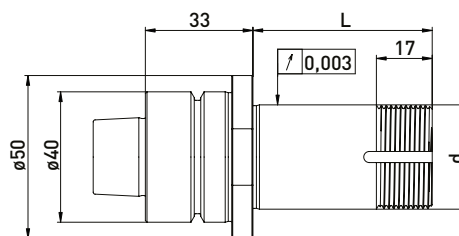
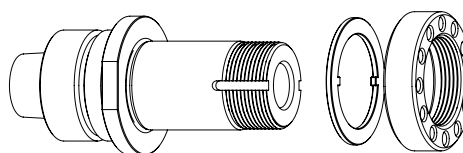
For ANCA tool grinding machines with ring set $\varnothing 50$ mm

GWA automatic HSK-F40 // $\varnothing 31,75$ mm (1¼) // RS $\varnothing 50$ mm



Delivered equipped:
Ring set $\varnothing 50$ mm, lock washer and clamping nut

GWA automatic HSK-F40 // $\varnothing 31,75$ mm // without RS



Delivered equipped:
Lock washer and clamping nut

Ring set $\varnothing 50$ mm

Item No.	HSK	d	L	B 20	B 10	B 4
300025112	HSK-F40	31,75	55	1	1	3
300025122	HSK-F40	31,75	72	2	1	2
300025132	HSK-F40	31,75	85	2	2	3
300025142	HSK-F40	31,75	95	3	1	3

Item No.	HSK	d	L
300025111	HSK-F40	31,75	55
300025121	HSK-F40	31,75	72
300025131	HSK-F40	31,75	85
300025141	HSK-F40	31,75	95

Accessories ANCA grinding wheel adapter automatic HSK-F40 // Shaft $\varnothing 31,75$ mm (1¼) // Ring set $\varnothing 50$ mm

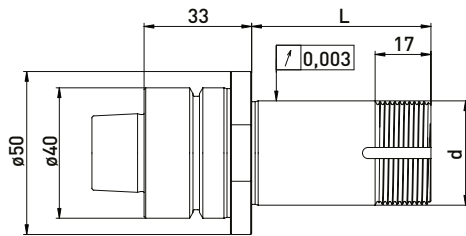
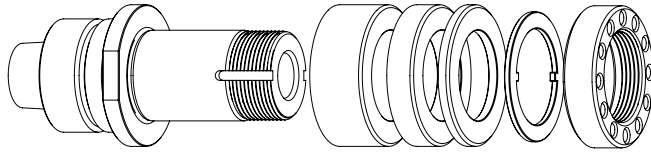
Item No.	Description
350050010	Universal assembly device $\varnothing 50$
350040030	Clamping nut wrench TK39 for ANCA nut

Item No.	Description
350011120	Spacer Ring $\varnothing 50 \times \varnothing 31,75 \times 20$
350011110	Spacer Ring $\varnothing 50 \times \varnothing 31,75 \times 10$
350011104	Spacer Ring $\varnothing 50 \times \varnothing 31,75 \times 4$
350030040	Lock washer $\varnothing 43 \times \varnothing 32 \times 2$
350020050	Clamping nut ANCA M31,5 x 1,5 $\varnothing 47 \times 12$

ANCA automatic HSK-F40 // Shaft $\varnothing 32$ mm // RS $\varnothing 50$ mm

For ANCA tool grinding machines with ring set $\varnothing 50$ mm

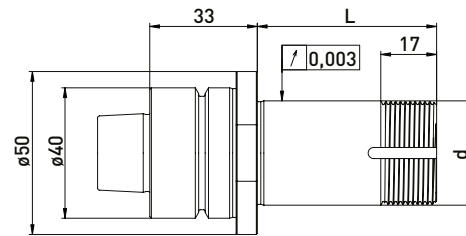
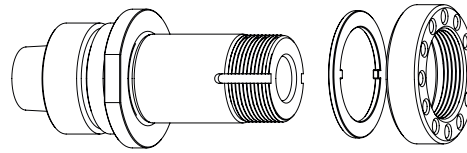
GWA automatic HSK-F40 // $\varnothing 32$ mm // RS $\varnothing 50$ mm



Delivered equipped:
Ring set $\varnothing 50$ mm, lock washer and clamping nut

Item No.	HSK	d	L	Ring set $\varnothing 50$ mm		
				B20	B10	B4
300025212	HSK-F40	32	55	1	1	3
300025222	HSK-F40	32	72	2	1	2
300025232	HSK-F40	32	85	2	2	3
300025242	HSK-F40	32	95	3	1	3

GWA automatic HSK-F40 // $\varnothing 32$ mm // without RS



Delivered equipped:
Lock washer and clamping nut

Item No.	HSK	d	L
300025211	HSK-F40	32	55
300025221	HSK-F40	32	72
300025231	HSK-F40	32	85
300025241	HSK-F40	32	95

Accessories ANCA grinding wheel adapter automatic HSK-F40 // Shaft $\varnothing 32$ mm // Ring set $\varnothing 50$ mm

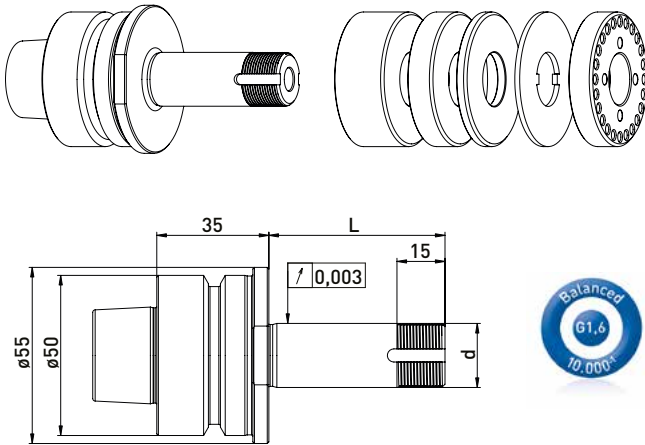
Item No.	Description	
350050010	Universal assembly device $\varnothing 50$	
350040030	Clamping nut wrench TK39 for ANCA nut	

Item No.	Description	
350011220	Spacer Ring $\varnothing 50 \times \varnothing 32 \times 20$	
350011210	Spacer Ring $\varnothing 50 \times \varnothing 32 \times 10$	
350011204	Spacer Ring $\varnothing 50 \times \varnothing 32 \times 4$	
350030040	Lock washer $\varnothing 43 \times \varnothing 32 \times 2$	
350020050	Clamping nut ANCA M31,5 x 1,5 $\varnothing 47 \times 12$	

ANCA automatic HSK-F50 // Shaft $\varnothing 20$ mm // RS $\varnothing 50$ mm

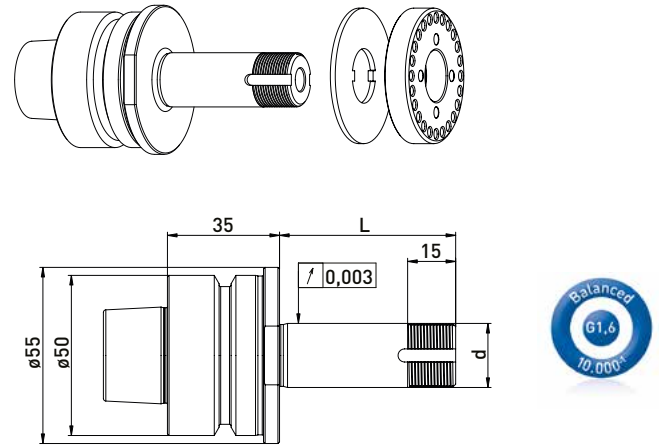
For ANCA tool grinding machines with ring set $\varnothing 50$ mm

GWA automatic HSK-F50 // $\varnothing 20$ mm // RS $\varnothing 50$ mm



Delivered equipped:
Ring set $\varnothing 50$ mm, lock washer and clamping nut

GWA automatic HSK-F50 // $\varnothing 20$ mm // without RS



Delivered equipped:
Lock washer and clamping nut

Ring set $\varnothing 50$ mm

Item No.	HSK	d	L	B 20	B 10	B 4
300024012	HSK-F50	20	55	1	1	3
300024022	HSK-F50	20	72	2	1	2
300024032	HSK-F50	20	85	2	2	3
300024042	HSK-F50	20	95	3	1	3

Item No.	HSK	d	L
300024011	HSK-F50	20	55
300024021	HSK-F50	20	72
300024031	HSK-F50	20	85
300027441	HSK-F50	20	95

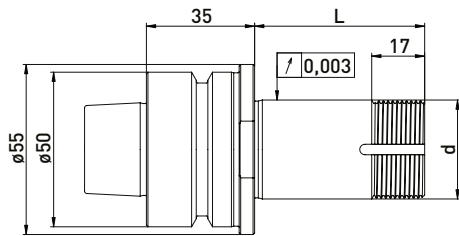
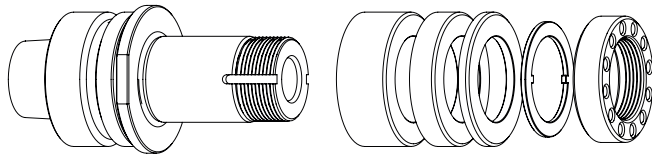
Accessories ANCA grinding wheel adapter automatic HSK-F50 // Shaft $\varnothing 20$ mm // Ring set $\varnothing 50$ mm

Item No.	Description	
350050010	Universal assembly device $\varnothing 50$	
350040010	Clamping nut wrench TK 27 for $\varnothing 20$	
350020021	*Balancing weight pair for clamping nut $\varnothing 50$ // 100gmm	

Item No.	Description	
350011020	Spacer Ring $\varnothing 50 \times \varnothing 20 \times 20$	
350011010	Spacer Ring $\varnothing 50 \times \varnothing 20 \times 10$	
350011004	Spacer Ring $\varnothing 50 \times \varnothing 20 \times 4$	
350030010	lock washer $\varnothing 50 \times \varnothing 20 \times 2$	
350020051	Clamping nut ANCA M20 x 1 $\varnothing 50 \times 9,5$	
350020020	*Clamping nut with balancing option $\varnothing 50 \times 8,5$ M20x1,0	

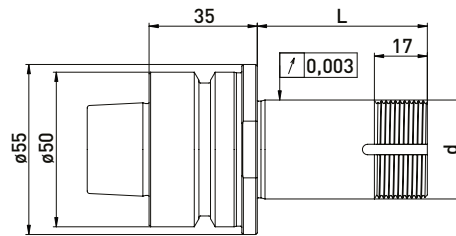
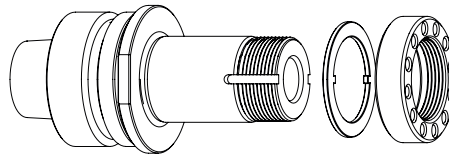
For ANCA tool grinding machines with ring set $\varnothing 50$ mm

GWA automatic HSK-F50 // $\varnothing 31,75$ mm (1¼) // RS $\varnothing 50$ mm



Delivered equipped:
Ring set $\varnothing 50$ mm, lock washer and clamping nut

GWA automatic HSK-F50 // $\varnothing 31,75$ mm // without RS



Delivered equipped:
Lock washer and clamping nut

Ring set $\varnothing 50$ mm

Item No.	HSK	d	L	B20	B10	B4
300024112	HSK-F50	31,75	55	1	1	3
300024122	HSK-F50	31,75	72	2	1	2
300024132	HSK-F50	31,75	85	2	2	3
300024142	HSK-F50	31,75	95	3	1	3

Item No.	HSK	d	L
300024111	HSK-F50	31,75	55
300024121	HSK-F50	31,75	72
300024131	HSK-F50	31,75	85
300024141	HSK-F50	31,75	95

Accessories ANCA grinding wheel adapter automatic HSK-F50 // Shaft $\varnothing 31,75$ mm (1¼) // Ring set $\varnothing 50$ mm

Item No.	Description
350050010	Universal assembly device $\varnothing 50$
350040030	Clamping nut wrench TK39 for ANCA nut



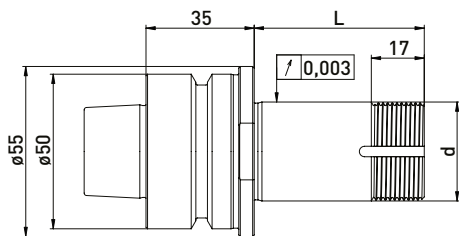
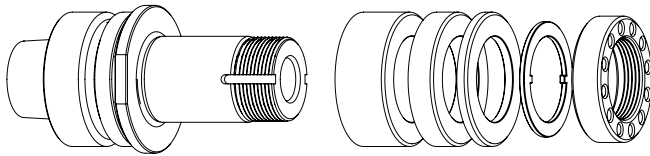
Item No.	Description
350011120	Spacer Ring $\varnothing 50 \times \varnothing 31,75 \times 20$
350011110	Spacer Ring $\varnothing 50 \times \varnothing 31,75 \times 10$
350011104	Spacer Ring $\varnothing 50 \times \varnothing 31,75 \times 4$
350030040	Lock washer $\varnothing 43 \times \varnothing 32 \times 2$
350020050	Clamping nut ANCA M31,5x1,5 $\varnothing 47 \times 12$



ANCA automatic HSK-F50 // Shaft $\varnothing 32$ mm // RS $\varnothing 50$ mm

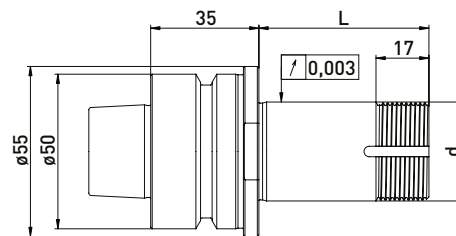
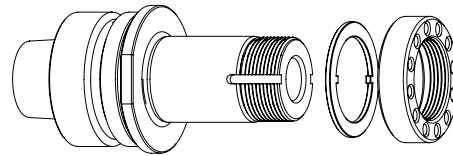
For ANCA tool grinding machines with ring set $\varnothing 50$ mm

GWA automatic HSK-F50 // $\varnothing 32$ mm // RS $\varnothing 50$ mm



Delivered equipped:
Ring set $\varnothing 50$ mm, lock washer and clamping nut

GWA automatic HSK-F50 // $\varnothing 32$ mm // without RS



Delivered equipped:
Lock washer and clamping nut

Ring set $\varnothing 50$ mm

Item No.	HSK	d	L	B 20	B 10	B 4
300024212	HSK-F50	32	55	1	1	3
300024222	HSK-F50	32	72	2	1	2
300024232	HSK-F50	32	85	2	2	3
300024242	HSK-F50	32	95	3	1	3

Item No.	HSK	d	L
300024211	HSK-F50	32	55
300024221	HSK-F50	32	72
300024231	HSK-F50	32	85
300024241	HSK-F50	32	95

Accessories ANCA grinding wheel adapter automatic HSK-F50 // Shaft $\varnothing 32$ mm // Ring set $\varnothing 50$ mm

Item No.	Description
350050010	Universal assembly device $\varnothing 50$
350040030	Clamping nut wrench TK39 for ANCA nut



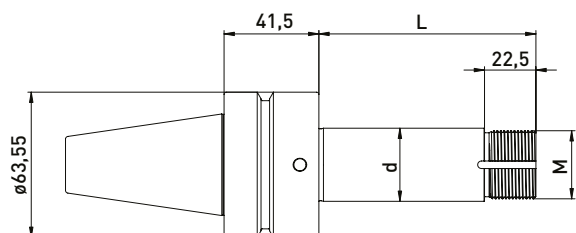
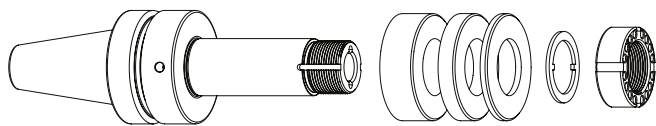
Item No.	Description
350011220	Spacer Ring $\varnothing 50 \times \varnothing 32 \times 20$
350011210	Spacer Ring $\varnothing 50 \times \varnothing 32 \times 10$
350011204	Spacer Ring $\varnothing 50 \times \varnothing 32 \times 4$
350030040	Lock washer $\varnothing 43 \times \varnothing 32 \times 2$
350020050	Clamping nut ANCA M31,5 x 1,5 $\varnothing 47 \times 12$



ANCA similar SK40 with flat contact face

For ANCA tool grinding machines

GWA similar SK40 with flat contact face



Delivered equipped:
Ring set, lock washer and clamping nut with balancing option

Item No.	Fine thread	d	L	Ring set		
				B 20	B 10	B 4
300026052	M20 x 1,5	20	95	2	2	4
300026152	M30 x 1,5	31,75	95	2	2	4
300026252	M30 x 1,5	32	95	2	2	4
300026952	M50 x 1,5	50,8	95	2	2	4

Accessories GWA similar SK40 with flat contact face

Item No.	Description	
350011020	Spacer Ring $\phi 50 \times \phi 20 \times 20$	
350011010	Spacer Ring $\phi 50 \times \phi 20 \times 10$	
350011004	Spacer Ring $\phi 50 \times \phi 20 \times 4$	
350011420	Spacer Ring $\phi 60 \times \phi 31,75 \times 20$	
350011410	Spacer Ring $\phi 60 \times \phi 31,75 \times 10$	
350011404	Spacer Ring $\phi 60 \times \phi 31,75 \times 4$	
350011320	Spacer Ring $\phi 60 \times \phi 32 \times 20$	
350011310	Spacer Ring $\phi 60 \times \phi 32 \times 10$	
350011304	Spacer Ring $\phi 60 \times \phi 32 \times 4$	
250000549	Spacer Ring $\phi 75 \times \phi 50,8 \times 20$	
250000548	Spacer Ring $\phi 75 \times \phi 50,8 \times 10$	
250000547	Spacer Ring $\phi 75 \times \phi 50,8 \times 4$	

Accessories ANCA grinding wheel adapter similar SK40 with flat contact face

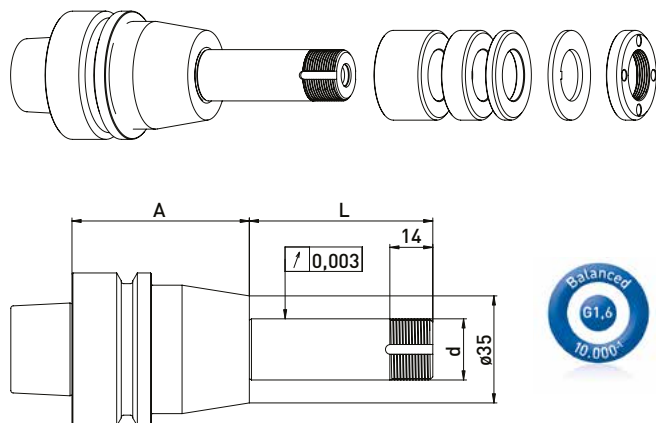
Item No.	Description	
250000552	Lock washer $\phi 37 \times \phi 20 \times 2$	
250000940	Lock washer $\phi 40 \times \phi 30 \times 2$	
250000550	Lock washer $\phi 64 \times \phi 50,2 \times 2$	

Item No.	Description	
250000553	Clamping nut with balancing option M20x1,5 - $\phi 40 \times 17$	
250000485	Clamping nut with balancing option M30x1,5 - $\phi 45 \times 17$	
250000551	Clamping nut with balancing option M50x1,5 - $\phi 70 \times 19$	

Deckel/ISOG HSK-F50 // Shaft $\varnothing 20$ mm // RS $\varnothing 35$ mm

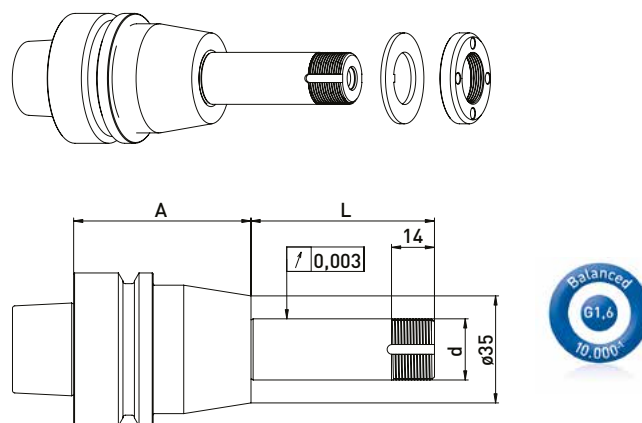
For Deckel/ISOG tool grinding machines with ring set $\varnothing 35$ mm

GWA HSK-F50 // $\varnothing 20$ mm // RS $\varnothing 35$ mm



Delivered equipped:
Ring set $\varnothing 35$ mm, lock washer and clamping nut

GWA HSK-F50 // $\varnothing 20$ mm // without RS



Delivered equipped:
Lock washer and clamping nut

Ring set $\varnothing 35$ mm

Item No.	HSK	d	L	A	B 20	B 10	B 4
300032512	HSK-F50	20	48	38	-	2	4
300032522	HSK-F50	20	60	58	1	1	4
300032532	HSK-F50	20	90	58	2	2	4

Item No.	HSK	d	L	A
300032511	HSK-F50	20	48	38
300032521	HSK-F50	20	60	58
300032531	HSK-F50	20	90	58

Accessories Deckel/ISOG grinding wheel adapter HSK-F50 // Shaft $\varnothing 20$ mm // Ring set 35 mm

Item No.	Description
350050010	Universal assembly device $\varnothing 50$
350050020	Assembly device Deckel/ISOG
350040010	*Clamping nut wrench TK 27 for $\varnothing 20$
350040040	*Clamping nut wrench TK29 for $\varnothing 20$ for clamping nut with balancing option
350020081	*Balancing weight pair for clamping nut $\varnothing 35$ // 40gmm

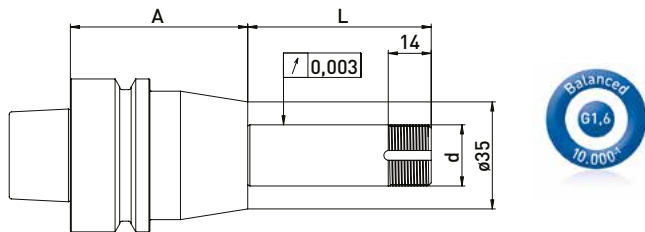
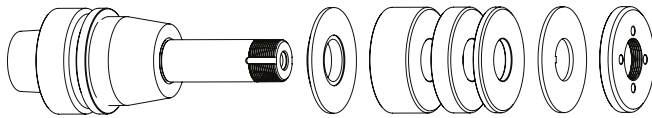
Item No.	Description
350012020	Spacer Ring $\varnothing 35 \times \varnothing 20 \times 20$
350012010	Spacer Ring $\varnothing 35 \times \varnothing 20 \times 10$
350012004	Spacer Ring $\varnothing 35 \times \varnothing 20 \times 4$
250001397	Lock washer $\varnothing 35 \times 1,5$
350020030	*Clamping nut GDS $\varnothing 35 \times 6$ M20 x 1
114050034	*Clamping nut Deckel/ISOG $\varnothing 35 \times 7$
350020080	*Clamping nut with balancing option $\varnothing 35 \times \varnothing 40 \times 8 \times$ M20x1

Deckel/ISOG HSK-F50 // Shaft $\varnothing 20$ mm // RS $\varnothing 50$ mm

For Deckel/ISOG tool grinding machines with ring set $\varnothing 50$ mm

Deckel/ISOG

GWA HSK-F50 // $\varnothing 20$ mm // RS $\varnothing 50$ mm

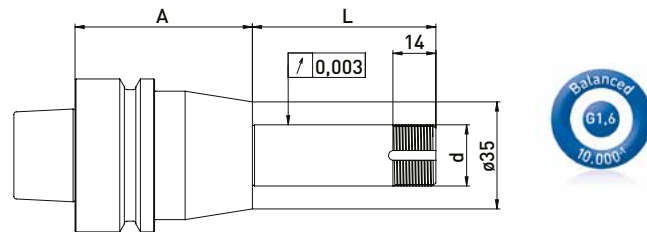
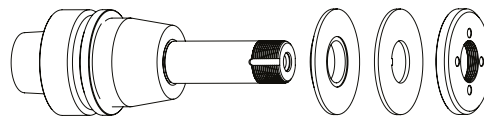


Delivered equipped:
Reducing washer, ring set $\varnothing 50$ mm, lock washer and clamping nut

Ring set $\varnothing 50$ mm

Item No.	HSK	d	L	A	B 20	B 10	B 4
300032012	HSK-F50	20	48	38	-	2	3
300032022	HSK-F50	20	60	58	1	1	3
300032032	HSK-F50	20	90	58	2	2	3

GWA HSK-F50 // $\varnothing 20$ mm // without RS



Delivered equipped:
Reducing washer, lock washer and clamping nut

Item No.	HSK	d	L	A
300032011	HSK-F50	20	48	38
300032021	HSK-F50	20	60	58
300032031	HSK-F50	20	90	58

Accessories Deckel/ISOG grinding wheel adapter HSK-F50 // Shaft $\varnothing 20$ mm // Ring set 50 mm

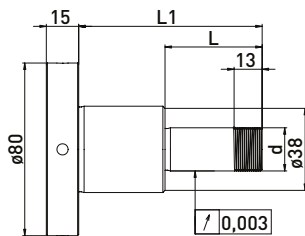
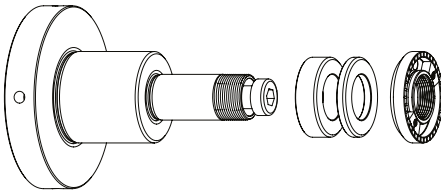
Item No.	Description	
350050010	Universal assembly device $\varnothing 50$	
350050020	Assembly device Deckel/ISOG	
350040010	Clamping nut wrench TK 27 for $\varnothing 20$	
350020021	*Balancing weight pair for clamping nut $\varnothing 50$ // 100gmm	

Item No.	Description	
350011020	Spacer Ring $\varnothing 50 \times \varnothing 20 \times 20$	
350011010	Spacer Ring $\varnothing 50 \times \varnothing 20 \times 10$	
350011004	Spacer Ring $\varnothing 50 \times \varnothing 20 \times 4$	
250001482	Lock washer $\varnothing 50 \times 2$	
350020060	Clamping nut $\varnothing 50 \times 6 \times M20 \times 1$	
350015003	Support washer $\varnothing 50 \times \varnothing 75 \times \varnothing 20 \times 6$	
350020020	*Clamping nut with balancing option $\varnothing 50 \times 8,5 M20 \times 1,0$	

EWAG $\varnothing 80$ mm // Shaft $\varnothing 20$ mm // RS $\varnothing 35$ mm

For EWAG tool grinding machines with ring set $\varnothing 35$ mm

GWA $\varnothing 80$ mm // $\varnothing 20$ mm // RS $\varnothing 35$ mm



Delivered equipped:
 Ring set $\varnothing 35$ mm, clamping nut with balancing weights and M10 clamping screw

Item No.	d	L	L1	Ring set $\varnothing 35$ mm	
				B10	B4
300140012	20	45	85	2	3

Accessories Ewag grinding wheel adapter 80 mm // Shaft $\varnothing 20$ mm // Ring set $\varnothing 35$ mm

Item No.	Description
350020081	*Balancing weight pair for clamping nut $\varnothing 35$ // 40gmm



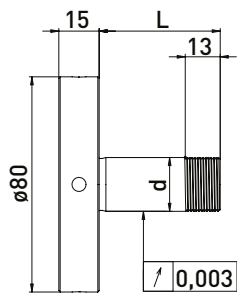
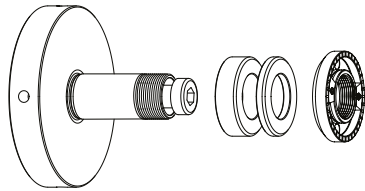
Item No.	Description
350012004	Spacer Ring $\varnothing 35$ x $\varnothing 20$ x 4
350011210	Spacer Ring $\varnothing 35$ x $\varnothing 20$ x 10
350020080	*Clamping nut with balancing option $\varnothing 35$ x $\varnothing 40$ x 8 x M20x1



EWAG ø80 mm // Shaft ø20 mm // RS ø35 mm

For EWAG tool grinding machines with ring set ø35 mm

GWA ø80 mm // ø20 mm // RS ø35 mm



Delivered equipped:
Ring set ø35 mm, clamping nut with balancing weights and M10 clamping screw

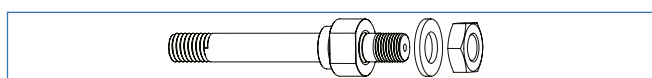
Item No.	d	L	Ring set ø35 mm	
			B 10	B 4
300141012	20	20	-	2
300141022	20	45	2	3

Accessories Ewag grinding wheel adapter 80 mm // Shaft ø20 mm // Ring set ø35 mm

Item No.	Description
350020081	*Balancing weight pair for clamping nut ø35 40gmm



Item No.	Description
350012004	Spacer Ring ø35 x ø20 x 4
350012010	Spacer Ring ø35 x ø20 x 10
350020080	*Clamping nut with balancing option ø35 x ø40 x 8 x M20x1

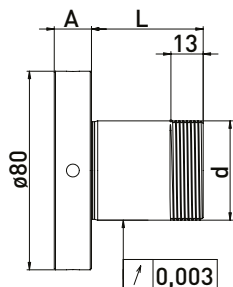
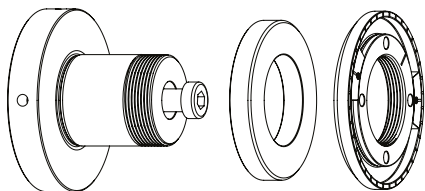


Item No.	Description
300149001	M10 adapter screw to ø10 Ewag M10 for article 30010112
300149002	M10 adapter screw to ø10 Ewag M10 for article 30010122

EWAG $\varnothing 80$ mm // Shaft $\varnothing 40$ mm // RS 70 mm

For EWAG tool grinding machines with ring set $\varnothing 70$ mm

GWA $\varnothing 80$ mm // $\varnothing 40$ mm // RS 70 mm

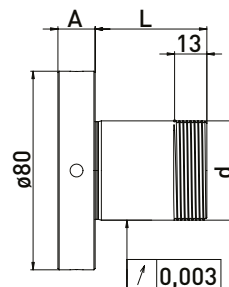
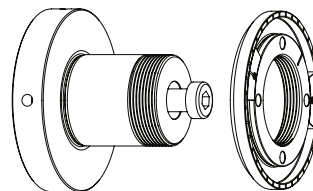


Delivered equipped:
 Spacer Ring $\varnothing 70$ mm, clamping nut with balancing weights
 and M10 clamping screw

Ring set $\varnothing 70$ mm

Item No.	d	L	A	B 12
300140242	40	45	15	1

GWA $\varnothing 80$ mm // $\varnothing 40$ mm // without RS



Delivered equipped:
 Clamping nut with balancing weights and M10 clamping
 screw

Item No.	d	L	A
300140212	40	20	15
300140222	40	20	30
300140232	40	20	49

Accessories Ewag grinding wheel adapter $\varnothing 80$ mm // Shaft $\varnothing 40$ mm // RS 70 mm

Item No.	Description
350020082	*Balancing weight pair for clamping nut $\varnothing 78$ Ewag



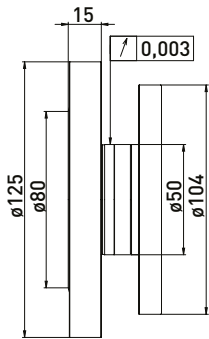
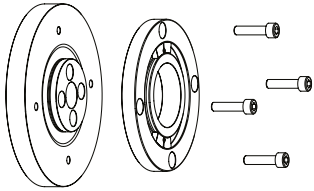
Item No.	Description
350014012	Spacer Ring $\varnothing 70$ x $\varnothing 40$ x 12
350020025	*Clamping nut with balancing option $\varnothing 78$ x 8,5,5 M40x1,5



EWAG $\varnothing 125$ mm // Shaft $\varnothing 50$ mm

For EWAG tool grinding machines

GWA $\varnothing 125$ // $\varnothing 32$ mm



Delivered equipped:
Flange and counter-flange with balancing weights and
4pc. M6x25 clamping screws

Item No.	Description
300140311	Grinding wheel adapter EWAG $\varnothing 125 \times \varnothing 50 \times A15$

Accessories Ewag grinding wheel adapter $\varnothing 125$ // Shaft $\varnothing 32$ mm

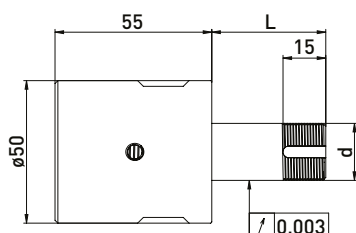
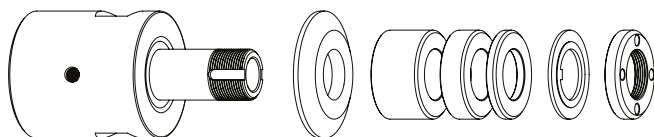
Item No.	Description
350020082	Balancing weight pair for clamping nut $\varnothing 78$ Ewag



For Haas tool grinding machines with ring set $\varnothing 35$ mm

GWA Internal taper $\varnothing 31,75$ mm (1¼) // $\varnothing 20$ mm // RS $\varnothing 35$ mm

Tight with torque wrench 80nm.



Delivered equipped:

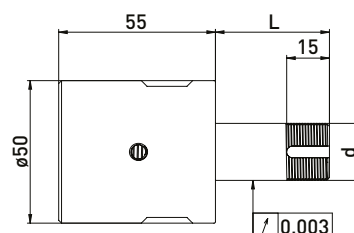
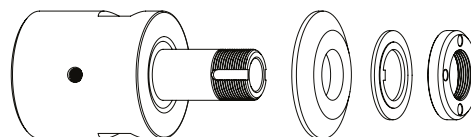
Installation system, reducing washer, ring set $\varnothing 35$ mm, lock washer and clamping nut

Ring set $\varnothing 35$ mm

Item No.	Internal taper	d	L	B 20	B 10	B 4
300091512	31,75	20	40	-	1	3
300091522	31,75	20	60	1	1	3
300091532	31,75	20	100	2	3	3

GWA Internal taper $\varnothing 31,75$ mm (1¼) // $\varnothing 20$ mm // $\varnothing 20$ mm

Tight with torque wrench 80nm.



Delivered equipped:

Installation system, reducing washer, lock washer and clamping nut

Item No.	Internal taper	d	L
300091511	31,75	20	40
300091521	31,75	20	60
300091531	31,75	20	100

Accessories Haas grinding wheel adapter Internal taper $\varnothing 31,75$ mm (1¼) // Shaft $\varnothing 20$ mm // Ring set 35 mm

Item No.	Description	
350050010	Universal assembly device $\varnothing 50$	
350040010	*Clamping nut wrench TK 27 for $\varnothing 20$	
350040040	*Clamping nut wrench TK29 for $\varnothing 20$ for clamping nut with blancing option	
350020081	*Balancing weight pair for clamping nut $\varnothing 35$ // 40gmm	
300101002	Installation system NCT63 Haas	
300101003	Montageschlüssel for Installation system NCT63 M20 x 1,5	

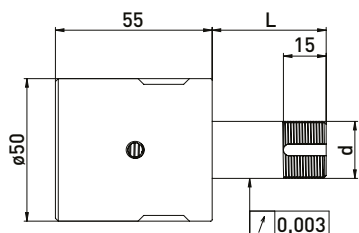
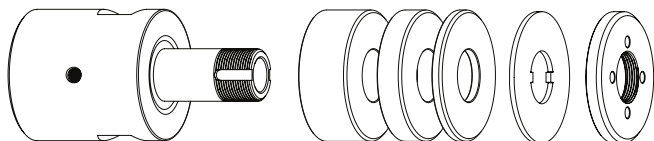
Item No.	Description	
350012020	Spacer Ring $\varnothing 35$ x $\varnothing 20$ x 20	
350012010	Spacer Ring $\varnothing 35$ x $\varnothing 20$ x 10	
350012004	Spacer Ring $\varnothing 35$ x $\varnothing 20$ x 4	
350015001	Reducing washer $\varnothing 50$ x $\varnothing 35$ x $\varnothing 20$ x 6	
350030020	Lock washer $\varnothing 35$ x $\varnothing 20$ x 2	
350020030	*Clamping nut $\varnothing 35$ x 6 M20x1	
350020080	*Clamping nut with balancing option $\varnothing 35$ x $\varnothing 40$ x 8 x M20 x1	
350015005	Support washer $\varnothing 35$ x $\varnothing 60$ x $\varnothing 20$ x 6	

Haas Internal taper $\varnothing 31,75$ mm ($1\frac{1}{4}$) // Shaft $\varnothing 20$ mm // RS $\varnothing 50$ mm

For Haas tool grinding machines with ring set $\varnothing 50$ mm

GWA Internal taper $\varnothing 31,75$ mm ($1\frac{1}{4}$) // $\varnothing 20$ mm // RS $\varnothing 50$ mm

Tight with torque wrench 80nm.



Delivered equipped:

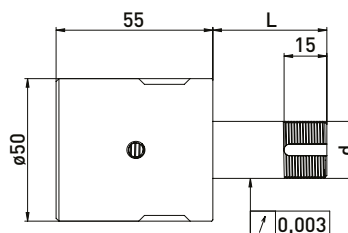
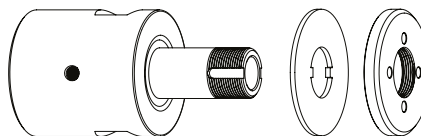
Installation system, ring set $\varnothing 50$ mm, lock washer and clamping nut

Ring set $\varnothing 50$ mm

Item No.	Internal taper	d	L	B 20	B 10	B 4
300091012	31,75	20	40	-	1	4
300091022	31,75	20	60	1	1	4
300091032	31,75	20	100	2	3	4

GWA Internal taper $\varnothing 31,75$ mm ($1\frac{1}{4}$) // $\varnothing 20$ mm // $\varnothing 20$ mm

Tight with torque wrench 80nm.



Delivered equipped:

Installation system, lock washer and clamping nut

Item No.	Internal taper	d	L
300091011	31,75	20	40
300091021	31,75	20	60
300091031	31,75	20	100

Accessories Haas grinding wheel adapter Internal taper $\varnothing 31,75$ mm ($1\frac{1}{4}$) // Shaft $\varnothing 20$ mm // Ring set 35 mm

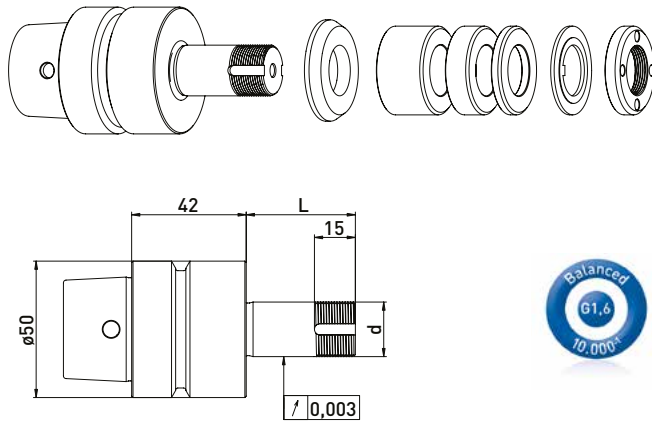
Item No.	Description	
350050010	Universal assembly device $\varnothing 50$	
350040010	Clamping nut wrench TK 27 for $\varnothing 20$	
350020021	*Balancing weight pair for clamping nut $\varnothing 50$ // 100gmm	
300101002	Installation system NCT63 Haas	
300101003	Assembly wrench for Installation system NCT63 M20 x 1,5	

Item No.	Description	
350011020	Spacer Ring $\varnothing 50$ x $\varnothing 20$ x 20	
350011010	Spacer Ring $\varnothing 50$ x $\varnothing 20$ x 10	
350011004	Spacer Ring $\varnothing 50$ x $\varnothing 20$ x 4	
350030010	Lock washer $\varnothing 50$ x $\varnothing 20$ x 2	
350020020	*Clamping nut with balancing option $\varnothing 50$ x 8,5 M20x1,0	
350015003	Support washer $\varnothing 50$ x $\varnothing 75$ x $\varnothing 20$ x 6	
350020060	Clamping nut $\varnothing 50$ x 6 x M20x1	

Haas HSK-E50 // Shaft $\varnothing 20$ mm // RS $\varnothing 35$ mm

For Haas tool grinding machines with ring set $\varnothing 35$ mm

GWA HSK-E50 // $\varnothing 20$ mm // RS $\varnothing 35$ mm

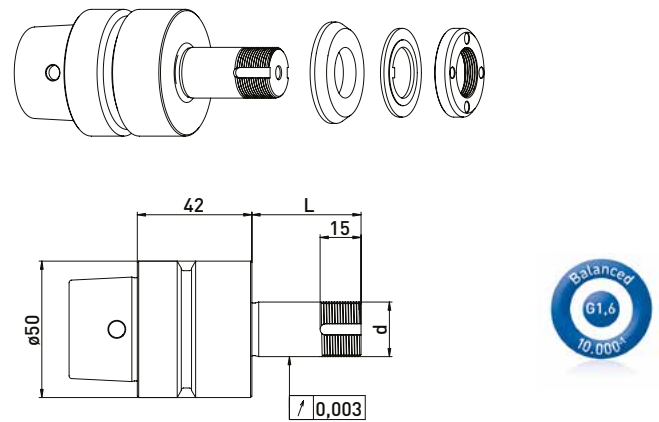


Delivered equipped:
rReducing washer, ring set $\varnothing 35$ mm, lock washer and clamping nut

Ring set $\varnothing 35$ mm

Item No.	HSK	d	L	Ring set $\varnothing 35$ mm		
				B 20	B 10	B 4
300092512	HSK-E50	20	40	-	1	3
300092522	HSK-E50	20	60	1	1	3
300092532	HSK-E50	20	100	2	3	3

GWA HSK-E50 // $\varnothing 20$ mm // without RS



Delivered equipped:
Reducing washer, lock washer and clamping nut

Item No.	HSK	d	L
300092511	HSK-E50	20	40
300092521	HSK-E50	20	60
300092531	HSK-E50	20	100

Accessories Haas grinding wheel adapter HSK-E50 // Shaft $\varnothing 20$ mm // Ring set $\varnothing 35$ mm

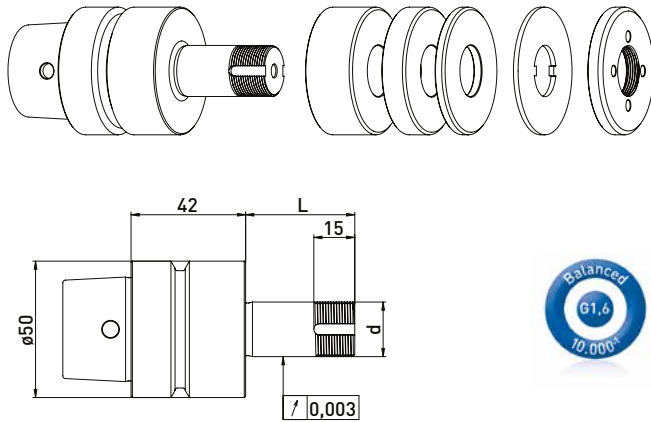
Item No.	Description	
350050010	Universal assembly device $\varnothing 50$	
350040010	*Clamping nut wrench TK 27 for $\varnothing 20$	
350040040	*Clamping nut wrench TK29 for $\varnothing 20$ for clamping nut with blancing option	
350020081	*Balancing weight pair for clamping nut $\varnothing 35$ // 40gmm	

Item No.	Description	
350012020	Spacer Ring $\varnothing 35 \times \varnothing 20 \times 20$	
350012010	Spacer Ring $\varnothing 35 \times \varnothing 20 \times 10$	
350012004	Spacer Ring $\varnothing 35 \times \varnothing 20 \times 4$	
350015001	Reducing washer $\varnothing 50 \times \varnothing 35 \times \varnothing 20 \times 6$	
350030020	Lock washer $\varnothing 35 \times \varnothing 20 \times 2$	
350020030	*Clamping nut $\varnothing 35 \times 6$ M20x1	
350020080	*Clamping nut with balancing option $\varnothing 35 \times \varnothing 40 \times 8 \times$ M20 x 1	
350015005	Support washer $\varnothing 35 \times \varnothing 60 \times \varnothing 20 \times 6$	

Haas HSK-E50 // Shaft $\varnothing 20$ mm // RS $\varnothing 50$ mm

For Haas tool grinding machines with ring set $\varnothing 50$ mm

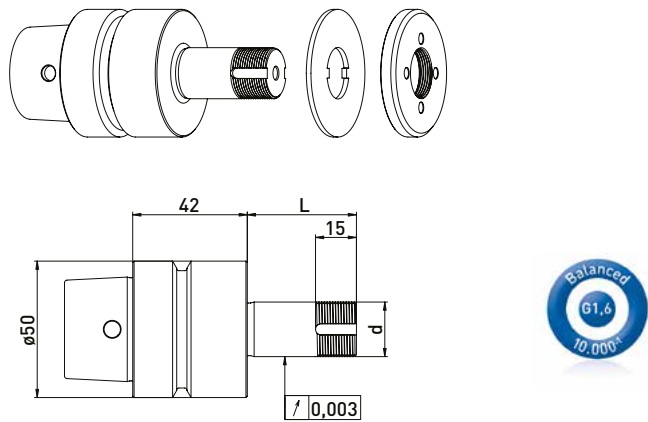
GWA HSK-E50 // $\varnothing 20$ mm // RS $\varnothing 50$ mm



Delivered equipped:
Ring set $\varnothing 50$ mm, lock washer and clamping nut

Item No.	HSK	d	L	Ring set $\varnothing 50$ mm		
				B 20	B 10	B 4
300092012	HSK-E50	20	40	-	1	4
300092022	HSK-E50	20	60	1	1	4
300092032	HSK-E50	20	100	2	3	4

GWA HSK-E50 // $\varnothing 20$ mm // without RS



Delivered equipped:
Lock washer and clamping nut

Item No.	HSK	d	L
300092011	HSK-E50	20	40
300092021	HSK-E50	20	60
300092031	HSK-E50	20	100

Accessories Haas grinding wheel adapter HSK-E50 // Shaft $\varnothing 20$ mm // Ring set $\varnothing 50$ mm

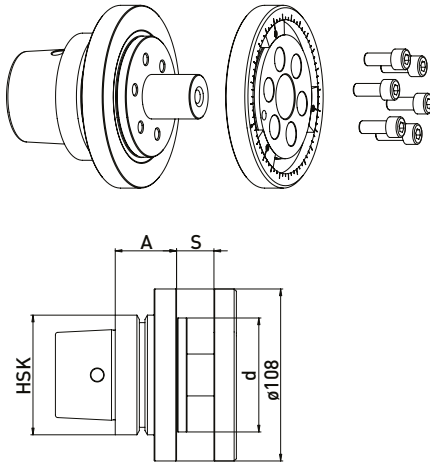
Item No.	Description	
350050010	Universal assembly device $\varnothing 50$	
350040010	Clamping nut wrench TK 27 for $\varnothing 20$	
350020021	*Balancing weight pair for clamping nut $\varnothing 50$ // 100gmm	

Item No.	Description	
350011020	Spacer Ring $\varnothing 50 \times \varnothing 20 \times 20$	
350011010	Spacer Ring $\varnothing 50 \times \varnothing 20 \times 10$	
350011004	Spacer Ring $\varnothing 50 \times \varnothing 20 \times 4$	
350030010	Lock washer $\varnothing 50 \times \varnothing 20 \times 2$	
350020060	Clamping nut $\varnothing 50 \times 6 \times M20 \times 1$	
350020020	*Clamping nut with balancing option $\varnothing 50 \times 8,5 M20 \times 1,0$	
350015003	Support washer $\varnothing 50 \times \varnothing 75 \times \varnothing 20 \times 6$	

Haas HSK-E50 and HSK-E80

For Haas tool grinding machines


GWA HSKE-50 and HSK-E80



Delivered equipped:
 Clamping flange with balancing weights 3pc.
 and clamping screws 6pc.

Item No.	HSK	d	A	S
300093011	HSK-E50	51	42	8-25
300093111	HSK-E50	76,2	42	8-25
300094011	HSK-E80	51	42	8-25
300094111	HSK-E80	76,2	42	8-25
300094211	HSK-E80	51	55	25-40

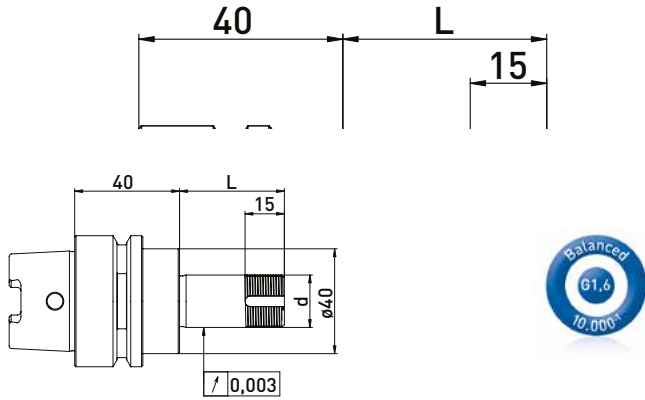
Accessories Haas grinding wheel adapter HSKE-50 and HSK-E80

Item No.	Description
250001059	Balancing weight $\varnothing 100 \times \varnothing 80 \times 7$ 

Hawema HSK50 // Shaft $\varnothing 20$ mm // RS $\varnothing 35$ mm

For Hawema tool grinding machines with ring set $\varnothing 35$ mm

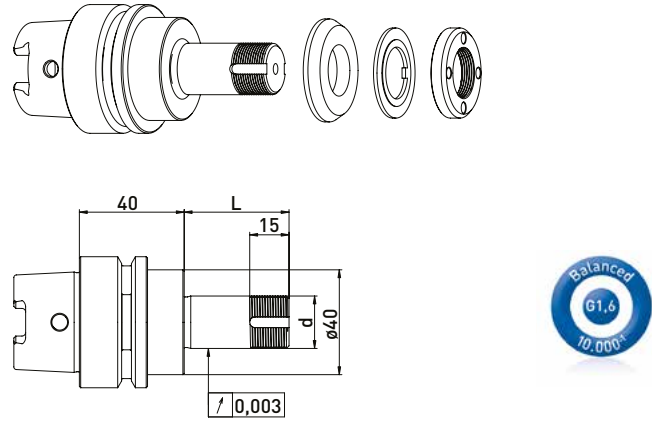
GWA HSK50 // $\varnothing 20$ mm // RS $\varnothing 35$ mm



Delivered equipped:
Reducing washer, ring set $\varnothing 35$ mm, lock washer and clamping nut

Item No.	HSK	d	L	Ring set $\varnothing 35$ mm		
				B 20	B 10	B 4
300012512	HSK50	20	40	-	1	3
300012522	HSK50	20	60	1	1	3
300012532	HSK50	20	75	1	2	4
300012542	HSK50	20	85	2	1	4
30001255	HSK50	20	100	2	3	3

GWA HSK50 // $\varnothing 20$ mm // without RS



Delivered equipped:
Reducing washer, lock washer and clamping nut

Item No.	HSK	d	L
300012511	HSK50	20	40
300012521	HSK50	20	60
300012531	HSK50	20	75
300012541	HSK50	20	85
300012551	HSK50	20	100

Accessories Haas grinding wheel adapter GWA HSK50 // $\varnothing 20$ mm // Ring set $\varnothing 35$ mm

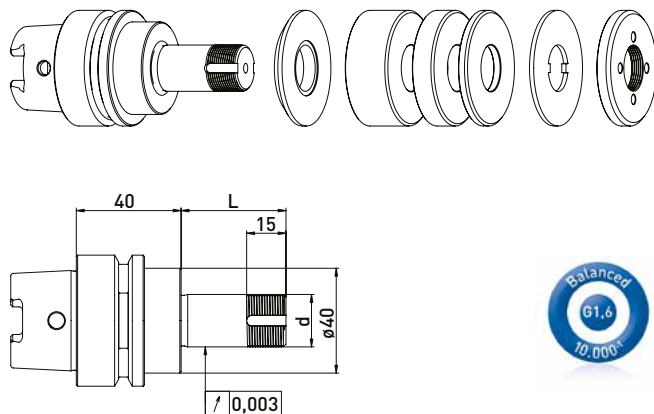
Item No.	Description	
350050010	Universal assembly device $\varnothing 50$	
350040010	*Clamping nut wrench TK 27 for $\varnothing 20$	
350040040	*Clamping nut wrench TK29 for $\varnothing 20$ for clamping nut with blancing option	
350020081	*Balancing weight pair for clamping nut $\varnothing 35$ // 40gmm	

Item No.	Description	
350012020	Spacer Ring $\varnothing 35 \times \varnothing 20 \times 20$	
350012010	Spacer Ring $\varnothing 35 \times \varnothing 20 \times 10$	
350012004	Spacer Ring $\varnothing 35 \times \varnothing 20 \times 4$	
350015006	Reducing washer $\varnothing 40 \times \varnothing 35 \times \varnothing 20 \times 6$	
350030020	Lock washer $\varnothing 35 \times \varnothing 20 \times 2$	
350020030	*Clamping nut $\varnothing 35 \times 6$ M20x1	
350020080	*Clamping nut with blancing option $\varnothing 35 \times \varnothing 40 \times 8 \times$ M20x1	
350015005	Support washer $\varnothing 35 \times \varnothing 60 \times \varnothing 20 \times 6$	

Hawema HSK50 // Shaft $\varnothing 20$ mm // RS $\varnothing 50$ mm

For Hawema tool grinding machines with ring set $\varnothing 50$ mm

GWA HSK50 // $\varnothing 20$ mm // RS $\varnothing 50$ mm

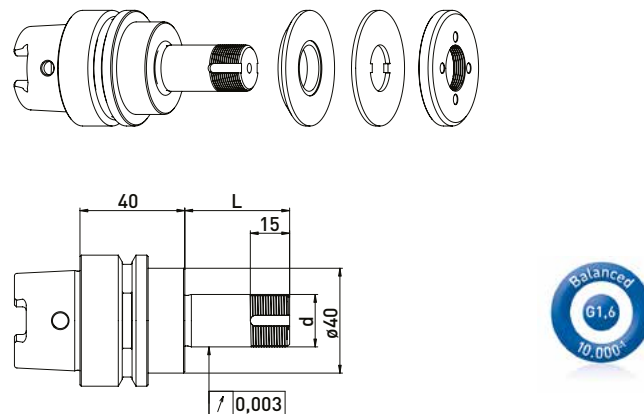


Delivered equipped:
Reducing washer, ring set $\varnothing 50$ mm, lock washer and clamping nut

Ring set $\varnothing 50$ mm

Item No.	HSK	d	L	B 20	B 10	B 4
300012012	HSK50	20	40	-	1	3
300012022	HSK50	20	60	1	1	3
300012032	HSK50	20	75	1	2	4
300012042	HSK50	20	85	2	1	4
300012052	HSK50	20	100	2	3	3




GWA HSK50 // $\varnothing 20$ mm // without RS











Delivered equipped:
Reducing washer, lock washer and clamping nut

Item No.	HSK	d	L
300012011	HSK50	20	40
300012021	HSK50	20	60
300012031	HSK50	20	75
300012041	HSK50	20	85
300012051	HSK50	20	100

Accessories Haas grinding wheel adapter GWA HSK50 // $\varnothing 20$ mm // Ring set $\varnothing 50$ mm

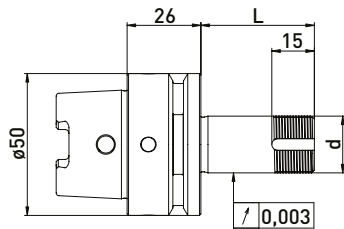
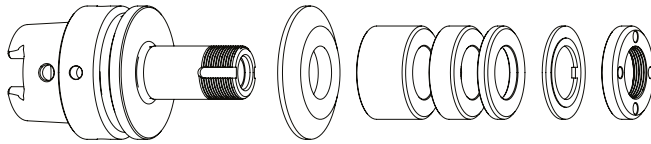
Item No.	Description
350050010	Universal assembly device $\varnothing 50$ 
350040010	Clamping nut wrench TK 27 for $\varnothing 20$ 
350020021	*Balancing weight pair for clamping nut $\varnothing 50$ // 100gmm 

Item No.	Description
350011020	Spacer Ring $\varnothing 50 \times \varnothing 20 \times 20$ 
350011010	Spacer Ring $\varnothing 50 \times \varnothing 20 \times 10$ 
350011004	Spacer Ring $\varnothing 50 \times \varnothing 20 \times 4$ 
350015002	Reducing washer $\varnothing 40 \times \varnothing 50 \times \varnothing 20 \times 6$ 
350030010	Lock washer $\varnothing 50 \times \varnothing 20 \times 2$ 
350020060	Clamping nut $\varnothing 50 \times 6 \times M20 \times 1$ 
350020020	*Clamping nut with balancing option $\varnothing 50 \times 8,5 M20 \times 1,0$ 
350015003	Support washer $\varnothing 50 \times \varnothing 75 \times \varnothing 20 \times 6$ 

Reinecker HSK50 // Shaft $\varnothing 20$ mm // RS $\varnothing 35$ mm

For Reinecker tool grinding machines with ring set $\varnothing 35$ mm

GWA HSK50 // $\varnothing 20$ mm // RS $\varnothing 35$ mm

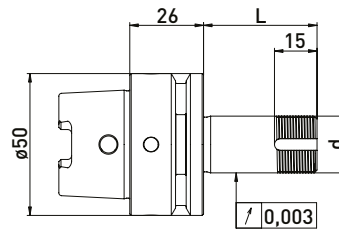
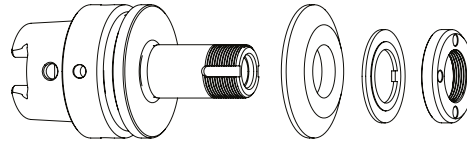


Delivered equipped:
Reducing washer, ring set $\varnothing 35$ mm, lock washer and clamping nut

Ring set $\varnothing 35$ mm

Item No.	HSK	d	L	B 20	B 10	B 4
300072512	HSK50	20	40	-	1	3
300072522	HSK50	20	60	1	1	3
300072532	HSK50	20	85	2	1	4
300072542	HSK50	20	110	3	2	3

GWA HSK50 // $\varnothing 20$ mm // without RS



Delivered equipped:
Reducing washer, lock washer and clamping nut

Item No.	HSK	d	L
300072511	HSK50	20	40
300072521	HSK50	20	60
300072531	HSK50	20	85
300072541	HSK50	20	110

Accessories Reinecker grinding wheel adapter GWA HSK50 // $\varnothing 20$ mm // Ring set $\varnothing 35$ mm

Item No.	Description	
350050010	Universal assembly device $\varnothing 50$	
350040010	*Clamping nut wrench TK 27 for $\varnothing 20$	
350040040	*Clamping nut wrench TK29 for $\varnothing 20$ for clamping nut with blancing option	
350020081	*Balancing weight pair for clamping nut $\varnothing 35$ // 40gmm	

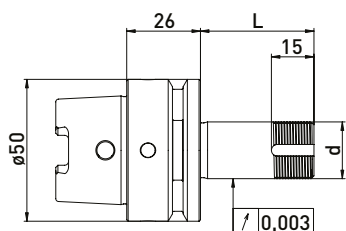
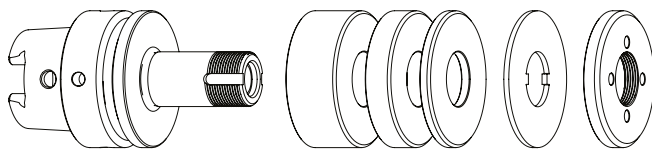
Item No.	Description	
350012020	Spacer Ring $\varnothing 35 \times \varnothing 20 \times 20$	
350012010	Spacer Ring $\varnothing 35 \times \varnothing 20 \times 10$	
350012004	Spacer Ring $\varnothing 35 \times \varnothing 20 \times 4$	
350015001	Reducing washer $\varnothing 50 \times \varnothing 35 \times \varnothing 20 \times 6$	
350030020	Lock washer $\varnothing 35 \times \varnothing 20 \times 2$	
350020030	*Clamping nut $\varnothing 35 \times 6$ M20x1	
350020080	*Clamping nut with balancing option $\varnothing 35 \times \varnothing 40 \times 8 \times$ M20x1	
350015005	Support washer $\varnothing 35 \times \varnothing 60 \times \varnothing 20 \times 6$	

Item No.	Description
250000253	Clamping screw Reinecker L40 - $\varnothing 12 \times 116$
250000254	Clamping screw Reinecker L60 - $\varnothing 12 \times 136$
250000255	Clamping screw Reinecker L85 - $\varnothing 12 \times 161$
250000256	Clamping screw Reinecker L110 - $\varnothing 12 \times 186$

Reinecker HSK50 // Shaft $\varnothing 20$ mm // RS $\varnothing 50$ mm

For Reinecker tool grinding machines with ring set $\varnothing 50$ mm

GWA HSK50 // $\varnothing 20$ mm // RS $\varnothing 50$ mm

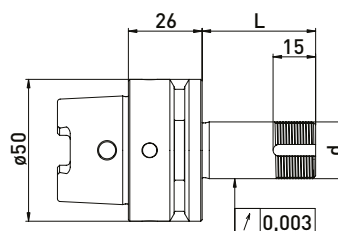
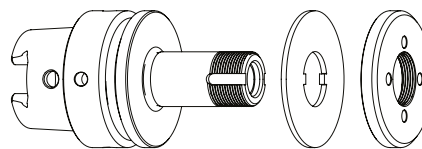


Delivered equipped:
reducing washer, ring set $\varnothing 50$ mm, lock washer and clamping nut

Ring set $\varnothing 50$ mm

Item No.	HSK	d	L	B 20	B 10	B 4
300072012	HSK50	20	40	-	1	4
300072022	HSK50	20	60	1	1	4
300072032	HSK50	20	85	2	2	3
300072242	HSK50	20	110	3	2	4

GWA HSK50 // $\varnothing 20$ mm // without RS



Delivered equipped:
Reducing washer, lock washer and clamping nut

Item No.	HSK	d	L
300072011	HSK50	20	40
300072021	HSK50	20	60
300072031	HSK50	20	85
300072041	HSK50	20	110

Accessories Reinecker grinding wheel adapter GWA HSK50 // $\varnothing 20$ mm // Ring set $\varnothing 50$ mm

Item No.	Description
350050010	Universal assembly device $\varnothing 50$
350040010	Clamping nut wrench TK 27 for $\varnothing 20$
350020021	*Balancing weight pair for clamping nut $\varnothing 50$ // 100gmm



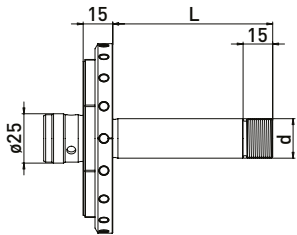
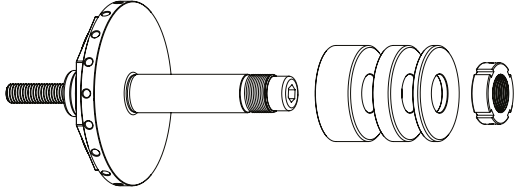
Item No.	Description
250000253	Clamping screw Reinecker L40 - $\varnothing 12$ x 116
250000254	Clamping screw Reinecker L60 - $\varnothing 12$ x 136
250000255	Clamping screw Reinecker L85 - $\varnothing 12$ x 161
250000256	Clamping screw Reinecker L110 - $\varnothing 12$ x 186

Item No.	Description
350011020	Spacer Ring $\varnothing 50$ x $\varnothing 20$ x 20
350011010	Spacer Ring $\varnothing 50$ x $\varnothing 20$ x 10
350011004	Spacer Ring $\varnothing 50$ x $\varnothing 20$ x 4
350015003	Support washer $\varnothing 50$ x $\varnothing 75$ x $\varnothing 20$ x 6
350030010	Lock washer $\varnothing 50$ x $\varnothing 20$ x 2
350020060	Clamping nut $\varnothing 50$ x 6 x M20x1
350020020	*Clamping nut with balancing option $\varnothing 50$ x 8,5 M20x1,0

Rollomatic $\varnothing 25$ mm // Shaft $\varnothing 20$ mm // RS $\varnothing 50$ mm

For Rollomatic tool grinding machines with ring set $\varnothing 50$ mm

GWA $\varnothing 25$ mm // $\varnothing 32$ mm // RS $\varnothing 50$ mm



Delivered equipped:
Ring set $\varnothing 50$ mm, M10 clamping screw and clamping nut

Ring set $\varnothing 50$ mm

Item No.	d	L	B 20	B 10	B 4
300150412	20	50	-	2	4
300150422	20	81	1	3	4

Accessories Rollomatic grinding wheel adapter $\varnothing 25$ mm // Shaft $\varnothing 20$ mm // RS $\varnothing 50$ mm

Item No.	Description
350040051	Hook wrench 30 - 32 mm



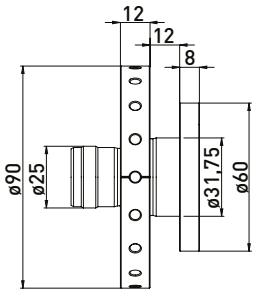
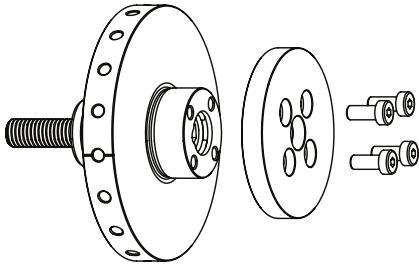
Item No.	Description
350011520	Spacer Ring Rollomatic $\varnothing 50$ x $\varnothing 20$ x 20
350011510	Spacer Ring Rollomatic $\varnothing 50$ x $\varnothing 20$ x 10
350011504	Spacer Ring Rollomatic $\varnothing 50$ x $\varnothing 20$ x 4
350020120	Clamping nut MRR20x1 M20 x 1 - $\varnothing 32$ x 10
350015003	Support washer $\varnothing 50$ x $\varnothing 75$ x $\varnothing 20$ x 6



Rollomatic $\varnothing 25$ mm // Shaft $\varnothing 31,75$ mm (1¼)

For Rollomatic tool grinding machines

GWA $\varnothing 25$ mm // $\varnothing 31,75$ mm (1¼)



Delivered equipped:

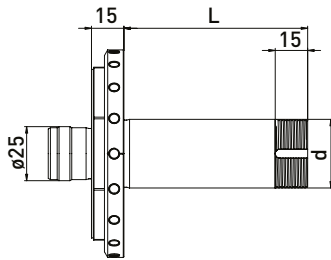
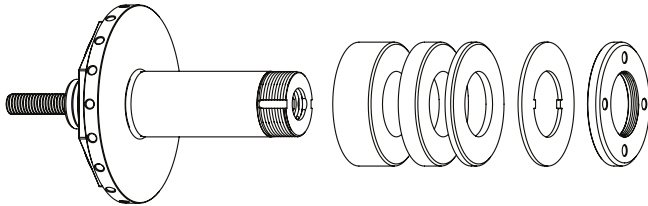
Clamping flange, 4pc. M5x12 cylinder screws and
M10 clamping screw

Item No.	Description
300150510	Grinding wheel adapter Rollomatic $\varnothing 31,75 \times 11$

Rollomatic $\varnothing 25$ mm // Shaft $\varnothing 31,75$ mm (1¼) // RS $\varnothing 60$ mm

For Rollomatic tool grinding machines with ring set $\varnothing 60$ mm

GWA $\varnothing 25$ mm // $\varnothing 31,75$ mm (1¼) // RS $\varnothing 60$ mm



Delivered equipped:
Ring set $\varnothing 60$ mm, M10 clamping screw and clamping nut

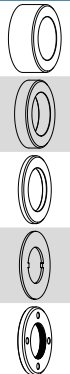
Item No.	d	L	Ring set $\varnothing 60$ mm		
			B 20	B 10	B 4
300150212	31,75	50	-	2	4
300150222	31,75	85	2	2	3
300150232	31,75	115	3	3	3

Accessories Rollomatic grinding wheel adapter $\varnothing 25$ mm // $\varnothing 31,75$ mm (1¼) // RS $\varnothing 50$ mm

Item No.	Description
350040020	Clamping nut wrench TK45 for $\varnothing 32$



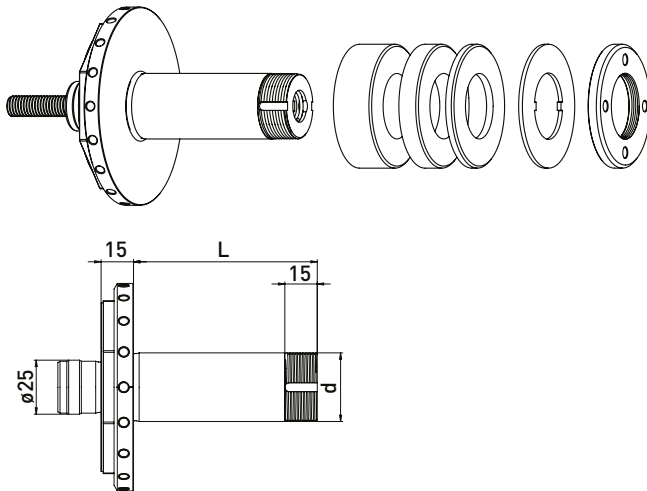
Item No.	Description
350011620	Spacer Ring Rollomatic $\varnothing 60 \times \varnothing 31,75 \times 20$
350011610	Spacer Ring Rollomatic $\varnothing 60 \times \varnothing 31,75 \times 10$
350011604	Spacer Ring Rollomatic $\varnothing 60 \times \varnothing 31,75 \times 4$
350030060	Lock washer $\varnothing 60 \times \varnothing 32 \times 1,8$
350020066	Clamping nut $\varnothing 60 \times 6 \times M32 \times 1,5$



Rollomatic $\varnothing 25$ mm // Shaft $\varnothing 32$ // RS $\varnothing 60$ mm

For Rollomatic tool grinding machines with ring set $\varnothing 60$ mm

GWA $\varnothing 25$ mm // $\varnothing 32$ mm // RS $\varnothing 60$ mm



Delivered equipped:

Ring set $\varnothing 60$ mm, M10 clamping screw and clamping nut

Item No.	d	L	Ring set $\varnothing 60$ mm		
			B20	B10	B4
300150312	32	50	-	2	4
300150322	32	85	2	2	3
300150332	32	115	3	3	3

Accessories Rollomatic grinding wheel adapter $\varnothing 25$ mm // Shaft $\varnothing 32$ mm // RS $\varnothing 50$ mm

Item No.	Description
350040020	Clamping nut wrench TK45 for $\varnothing 32$



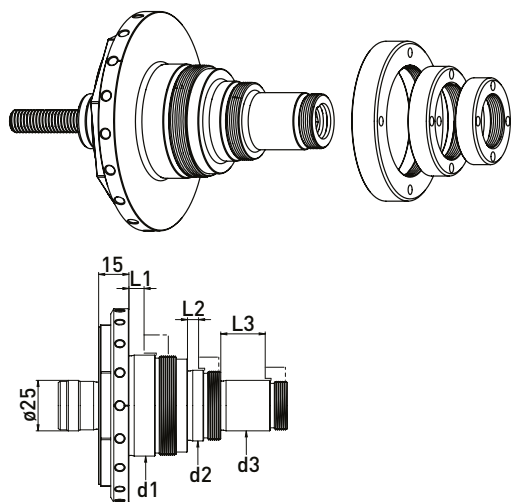
Item No.	Description
350011620	Spacer Ring Rollomatic $\varnothing 60 \times \varnothing 31,75 \times 20$
350011610	Spacer Ring Rollomatic $\varnothing 60 \times \varnothing 31,75 \times 10$
350011604	Spacer Ring Rollomatic $\varnothing 60 \times \varnothing 31,75 \times 4$
350030060	Lock washer $\varnothing 60 \times \varnothing 32 \times 1,8$
350020066	Clamping nut $\varnothing 60 \times 6 \times M32 \times ww1,5$



Rollomatic $\varnothing 25$ mm // stepped Shaft $\varnothing 32$, $\varnothing 30$, $\varnothing 40$ and $\varnothing 50$ mm

For Rollomatic tool grinding machines

GWA $\varnothing 25$ mm // stepped shaft



Delivered equipped:

per 1 piece clamping nut $\varnothing 38$ (350020110), $\varnothing 48$ (350020111), $\varnothing 70$ (350020113) and M10 clamping screw

Item No.	L1	L2	L3	d1	d2	d3
300150111	11,5	5,5	5,5	50	35	25
300150121	7,5	5,5	22	50	35	25

Delivered equipped:

per 1 piece clamping nut $\varnothing 38$ (350020110), $\varnothing 58$ (350020112) and M10 clamping screw

Item No.	L1	L2	L3	d1	d2	d3
300150131	11,5	5,5		40	25	

Delivered equipped:

per 1 piece clamping nut $\varnothing 38$ (350020110), $\varnothing 70$ (350020113) and M10 clamping screw

Item No.	L1	L2	L3	d1	d2	d3
300150141	11,5	5,5		50	25	

Accessories Rollomatic grinding wheel adapter $\varnothing 25$ mm // stepped Shaft $\varnothing 32$, $\varnothing 30$, $\varnothing 40$ and $\varnothing 50$ mm

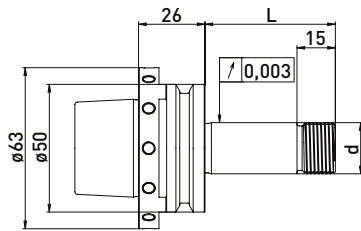
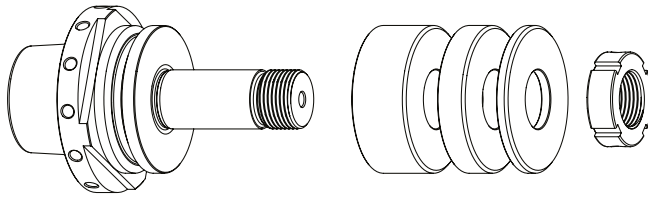
Item No.	Description	for d
350020110	Clamping nut Rollomatic $\varnothing 38$ x $\varnothing 25$ x 10 M24 x 1	25
350020111	Clamping nut Rollomatic $\varnothing 48$ x $\varnothing 35$ x 10 M34 x 1	35
350020112	Clamping nut Rollomatic $\varnothing 58$ x $\varnothing 40$ x 11 M39 x 1	40
350020113	Clamping nut Rollomatic $\varnothing 70$ x $\varnothing 50$ x 12 M49 x 1	50

Item No.	Description
350016001	Spacer Ring $\varnothing 38$ x $\varnothing 25$ x 5
350016002	Spacer Ring $\varnothing 58$ x $\varnothing 40$ x 5
350016003	Spacer Ring $\varnothing 70$ x $\varnothing 50$ x 5

Rollomatic HSK-E50 // Shaft $\varnothing 20$ mm // RS $\varnothing 50$ mm

For Rollomatic tool grinding machines with ring set $\varnothing 50$ mm

GWA HSK-E50 // $\varnothing 20$ mm // RS $\varnothing 50$ mm

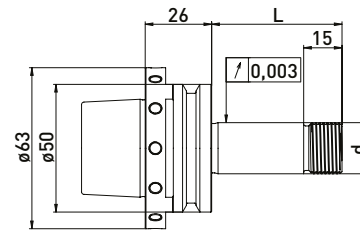
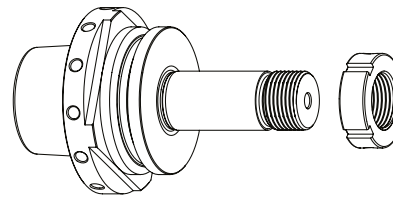


Delivered equipped:
Ring set $\varnothing 50$ mm and clamping nut

Ring set $\varnothing 50$ mm

Item No.	HSK	d	L	Ring set $\varnothing 50$ mm		
				B 20	B 10	B 4
300050612	HSK-50	20	51	1	1	2
300050632	HSK-50	20	81	2	2	2

GWA HSK-E50 // $\varnothing 20$ mm // without RS



Delivered equipped:
Clamping nut

Item No.	HSK	d	L
300050611	HSK-50	20	51
300050631	HSK-50	20	81

Accessories Rollomatic grinding wheel adapter GWA HSK-E50 // Shaft $\varnothing 20$ mm // RS $\varnothing 50$ mm

Item No.	Description
350040051	Hook wrench 30 - 32 mm



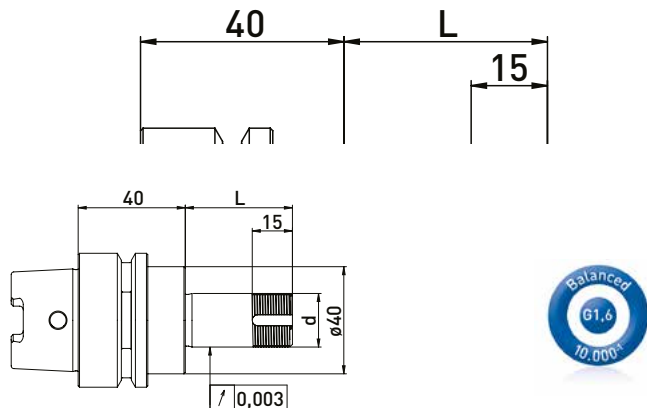
Item No.	Description
350011520	Spacer Ring Rollomatic $\varnothing 50 \times \varnothing 20 \times 20$
350011510	Spacer Ring Rollomatic $\varnothing 50 \times \varnothing 20 \times 10$
350011504	Spacer Ring Rollomatic $\varnothing 50 \times \varnothing 20 \times 4$
350020121	Clamping nut MRR20 x 1,5 M20 x 1,5 $\varnothing 32 \times 10$
350015003	Support washer $\varnothing 50 \times \varnothing 75 \times \varnothing 20 \times 6$



Saacke HSK50 // Shaft $\varnothing 20$ mm // RS $\varnothing 35$ mm

For Saacke tool grinding machines with ring set $\varnothing 35$ mm

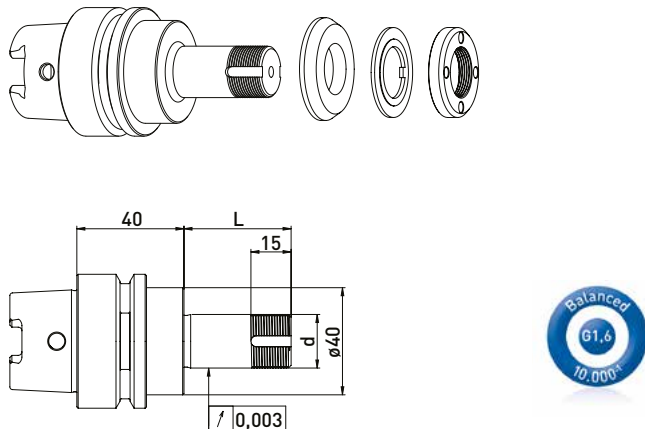
GWA HSK50 // $\varnothing 20$ mm // RS $\varnothing 35$ mm



Delivered equipped:
Reducing washer, ring set $\varnothing 35$ mm, lock washer and clamping nut

Item No.	HSK	d	L	Ring set $\varnothing 35$ mm		
				B 20	B 10	B 4
300012512	HSK50	20	40	-	1	3
300012522	HSK50	20	60	1	1	3
300012532	HSK50	20	75	1	2	4
300012542	HSK50	20	85	2	1	4
300012552	HSK50	20	100	2	3	3

GWA HSK50 // $\varnothing 20$ mm // without RS



Delivered equipped:
Reducing washer, lock washer and clamping nut

Item No.	HSK	d	L
300012511	HSK50	20	40
300012521	HSK50	20	60
300012531	HSK50	20	75
300012541	HSK50	20	85
300012551	HSK50	20	100

Accessories Saacke grinding wheel adapter HSK50 // Shaft $\varnothing 20$ mm // Ring set $\varnothing 35$ mm

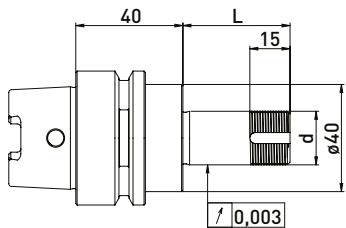
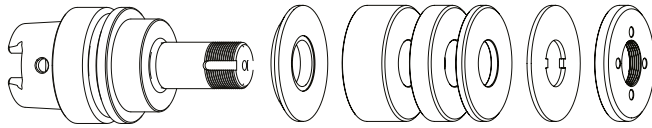
Item No.	Description	
350050010	Universal assembly device $\varnothing 50$	
350040010	*Clamping nut wrench TK 27 for $\varnothing 20$	
350040040	*Clamping nut wrench TK29 for $\varnothing 20$ for clamping nut with Balancing option	
350020081	*Balancing weight pair for clamping nut $\varnothing 35$ // 40gmm	

Item No.	Description	
350012020	Spacer Ring $\varnothing 35 \times \varnothing 20 \times 20$	
350012010	Spacer Ring $\varnothing 35 \times \varnothing 20 \times 10$	
350012004	Spacer Ring $\varnothing 35 \times \varnothing 20 \times 4$	
350015006	Reducing washer $\varnothing 40 \times \varnothing 35 \times \varnothing 20 \times 6$	
350030020	Lock washer $\varnothing 35 \times \varnothing 20 \times 2$	
350020030	*Clamping nut $\varnothing 35 \times 6$ M20x1	
350020080	*Clamping nut with balancing option $\varnothing 35 \times \varnothing 40 \times 8 \times$ M20x1	
350015005	Support washer $\varnothing 35 \times \varnothing 60 \times \varnothing 20 \times 6$	

Saacke HSK50 // Shaft $\varnothing 20$ mm // RS $\varnothing 50$ mm

For Saacke tool grinding machines with ring set $\varnothing 50$ mm

GWA HSK50 // $\varnothing 20$ mm // RS $\varnothing 50$ mm

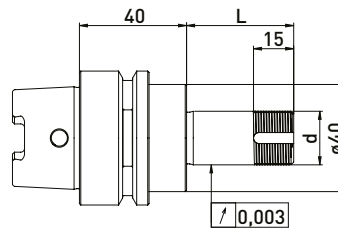
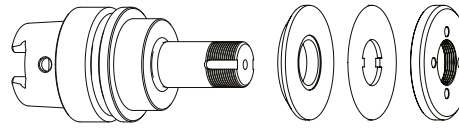


Delivered equipped:
Reducing washer, ring set $\varnothing 50$ mm, lock washer and clamping nut

Ring set $\varnothing 50$ mm

Item No.	HSK	d	L	Ring set $\varnothing 50$ mm		
				B 20	B 10	B 4
300012012	HSK50	20	40	-	1	3
300012022	HSK50	20	60	1	1	3
300012032	HSK50	20	75	1	2	4
300012042	HSK50	20	85	2	1	4
300012052	HSK50	20	100	2	3	3

GWA HSK50 // $\varnothing 20$ mm // without RS



Delivered equipped:
Reducing washer, lock washer and clamping nut

Item No.	HSK	d	L
300012011	HSK50	20	40
300012021	HSK50	20	60
300012031	HSK50	20	75
300012041	HSK50	20	85
300012051	HSK50	20	100

Accessories Saacke grinding wheel adapter GWA HSK50 // Shaft $\varnothing 20$ mm // Ring set $\varnothing 50$ mm

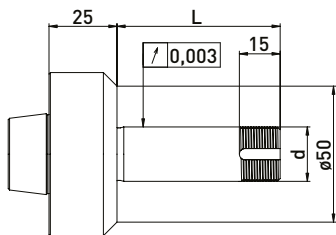
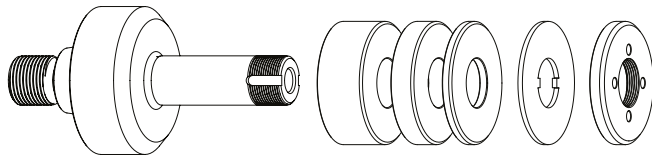
Item No.	Description	
350050010	Universal assembly device $\varnothing 50$	
350040010	Clamping nut wrench TK 27 for $\varnothing 20$	
350020021	*Balancing weight pair for clamping nut $\varnothing 50$ // 100gmm	

Item No.	Description	
350011020	Spacer Ring $\varnothing 50 \times \varnothing 20 \times 20$	
350011010	Spacer Ring $\varnothing 50 \times \varnothing 20 \times 10$	
350011004	Spacer Ring $\varnothing 50 \times \varnothing 20 \times 4$	
350030010	Lock washer $\varnothing 50 \times \varnothing 20 \times 2$	
350020060	Clamping nut $\varnothing 50 \times 6 \times M20 \times 1$	
350020020	*Clamping nut with balancing option $\varnothing 50 \times 8,5 M20 \times 1,0$	
350015002	Reducing washer $\varnothing 40 \times \varnothing 50 \times \varnothing 20 \times 6$	

Saacke short taper // Shaft $\varnothing 20$ mm // RS $\varnothing 50$ mm

For Saacke tool grinding machines with ring set $\varnothing 50$ mm

GWA short taper // $\varnothing 20$ mm // RS $\varnothing 50$ mm



Delivered equipped:

Ring set $\varnothing 50$ mm, lock washer, tightening screw and clamping nut

Item No.	taper	d	L	Ring set $\varnothing 50$ mm		
				B 20	B 10	B 4
300014012	Saacke	20	40	-	1	4
300014022	Saacke	20	60	1	1	4
300014042	Saacke	20	100	2	3	4

Accessories Saacke grinding wheel adapter short taper // Shaft $\varnothing 20$ mm // Ring set $\varnothing 50$ mm

Item No.	Description	
350040010	Clamping nut wrench TK 27 for $\varnothing 20$	
350020021	*Balancing weight pair for clamping nut $\varnothing 50$ // 100gmm	

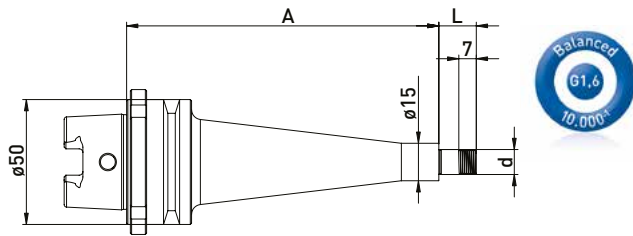
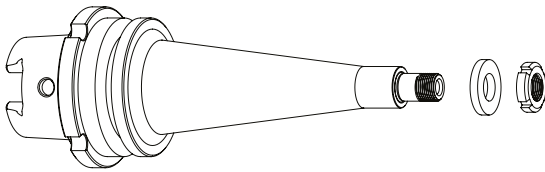
Item No.	Description
250000107	Saacke tightening screw $\varnothing 20$ x 49

Item No.	Description	
350011020	Spacer Ring $\varnothing 50$ x $\varnothing 20$ x 20	
350011010	Spacer Ring $\varnothing 50$ x $\varnothing 20$ x 10	
350011004	Spacer Ring $\varnothing 50$ x $\varnothing 20$ x 4	
350030010	Lock washer $\varnothing 50$ x $\varnothing 20$ x 2	
350020060	Clamping nut $\varnothing 50$ x 6 x M20x1	
350020020	*Clamping nut with balancing option $\varnothing 50$ x 8,5 M20x1,0	
350015003	Support washer $\varnothing 50$ x $\varnothing 75$ x $\varnothing 20$ x 6	

Schneeberger HSK50 // Shaft \varnothing 10 mm // RS 20 mm

For Schneeberger tool grinding machines with ring set \varnothing 20 mm

GWA HSK50 // Shaft \varnothing 10 mm // RS \varnothing 50 mm



Delivered equipped:
Ring set \varnothing 20 mm and clamping nut

Ring set \varnothing 20 mm

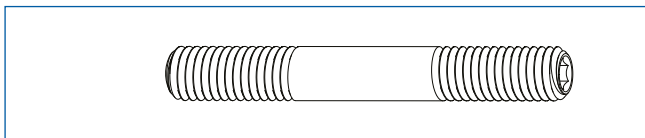
Item No.	HSK	d	L	A	B3
300044012	HSK50	10	15	60	3
300044022	HSK50	10	15	125	3

Accessories Schneeberger grinding wheel adapter HSK50 // Shaft \varnothing 10 mm // Ring set \varnothing 20 mm

Item No.	Description
350040050	Hook wrench 16 - 20 mm



Item No.	Description
350016004	Spacer Ring \varnothing 20 x \varnothing 10 x 3
350020114	Clamping nut \varnothing 18 x 4 - M10 x 0,75

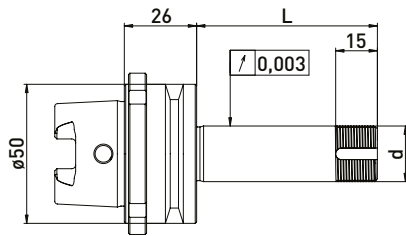
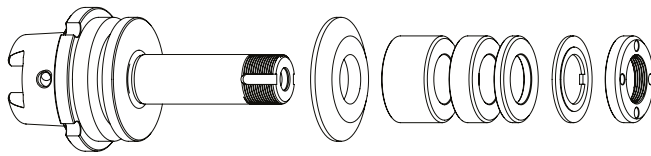


Item No.	Description
213011050	Clamping screw Schneeberger M8/M8 x 62

Schneeberger HSK50 // Shaft $\varnothing 20$ mm // RS $\varnothing 35$ mm

For Schneeberger tool grinding machines with ring set $\varnothing 35$ mm

GWA HSK50 // $\varnothing 20$ mm // RS $\varnothing 35$ mm

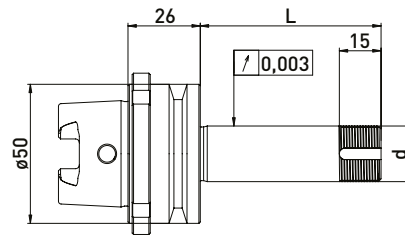
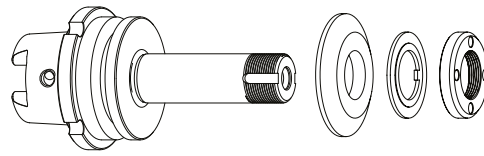


Delivered equipped:
Reducing washer, ring set $\varnothing 35$ mm, lock washer and clamping nut

Ring set $\varnothing 35$ mm

Item No.	HSK	d	L	B 20	B 10	B 4
300042512	HSK50	20	45	-	1	4
300042522	HSK50	20	65	1	1	4
300042532	HSK50	20	85	2	1	4
300042542	HSK50	20	110	3	2	2

GWA HSK50 // $\varnothing 20$ mm // without RS



Delivered equipped:
Reducing washer, lock washer and clamping nut

Item No.	HSK	d	L
300042511	HSK50	20	45
300042521	HSK50	20	65
300042531	HSK50	20	85
300042541	HSK50	20	110

Accessories Schneeberger grinding wheel adapter HSK50 // Shaft $\varnothing 20$ mm // Ring set $\varnothing 35$ mm

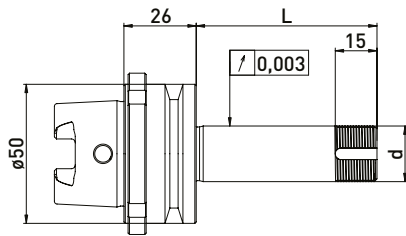
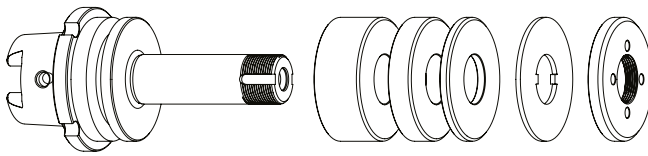
Item No.	Description	
350050010	Universal assembly device $\varnothing 50$	
350050030	Assembly device Schneeberger For assembly on the workbench, in a vice or in the puniversal assembly device	
350040010	Clamping nut wrench TK 27 for $\varnothing 20$	
350040040	*Clamping nut wrench TK29 for $\varnothing 20$ for clamping nut with blancing option	
350020081	*Balancing weight pair for clamping nut $\varnothing 35$ // 40gmm	
213011050	Clamping screw Schneeberger M8/M8 x 62	

Item No.	Description	
350012020	Spacer Ring $\varnothing 35 \times \varnothing 20 \times 20$	
350012010	Spacer Ring $\varnothing 35 \times \varnothing 20 \times 10$	
350012004	Spacer Ring $\varnothing 35 \times \varnothing 20 \times 4$	
350015001	Reducing washer $\varnothing 50 \times \varnothing 35 \times \varnothing 20 \times 6$	
350030020	Lock washer $\varnothing 35 \times \varnothing 20 \times 2$	
350020030	*Clamping nut $\varnothing 35 \times 6$ M20x1	
350020080	*Clamping nut with balancing option $\varnothing 35 \times \varnothing 40 \times 8 \times$ M20x1	

Schneeberger HSK50 // Shaft $\varnothing 20$ mm // RS $\varnothing 50$ mm

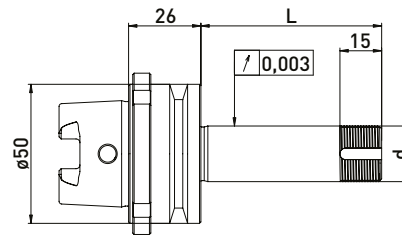
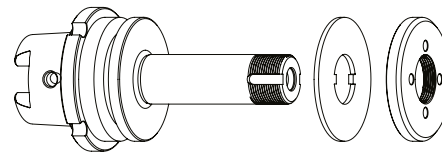
For Schneeberger tool grinding machines with ring set $\varnothing 50$ mm

GWA HSK50 // $\varnothing 20$ mm // RS $\varnothing 50$ mm



Delivered equipped:
Ring set $\varnothing 50$ mm, lock washer and clamping nut

GWA HSK50 // $\varnothing 20$ mm // without RS








Delivered equipped:
Lock washer and clamping nut

Ring set $\varnothing 50$ mm

Item No.	HSK	d	L	B 20	B 10	B 4
300042012	HSK50	20	45	-	2	3
300042022	HSK50	20	65	1	2	3
300042032	HSK50	20	85	2	2	3
300042042	HSK50	20	110	3	2	4

Item No.	HSK	d	L
300042011	HSK50	20	45
300042021	HSK50	20	65
300042031	HSK50	20	85
300042041	HSK50	20	110

Accessories Schneeberger grinding wheel adapter HSK50 // Shaft $\varnothing 20$ mm // Ring set $\varnothing 50$ mm

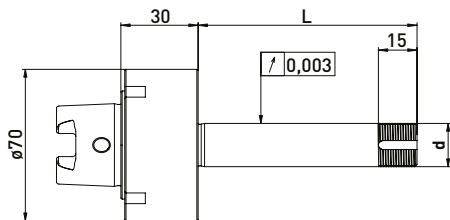
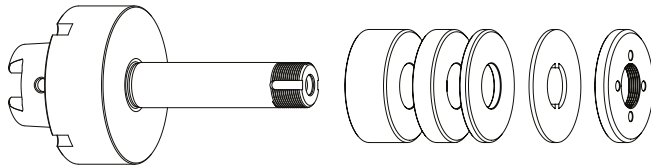
Item No.	Description
350050010	Universal assembly device $\varnothing 50$ 
350050030	Assembly device Schneeberger For assembly on the workbench, in a vice or in the puniversal assembly device 
350040010	Clamping nut wrench TK 27 for $\varnothing 20$ 
350020021	*Balancing weight pair for clamping nut $\varnothing 50$ // 100gmm 
213011050	Clamping screw Schneeberger M8/M8 x 62 

Item No.	Description
350011020	Spacer Ring $\varnothing 50$ x $\varnothing 20$ x 20 
350011010	Spacer Ring $\varnothing 50$ x $\varnothing 20$ x 10 
350011004	Spacer Ring $\varnothing 50$ x $\varnothing 20$ x 4 
350030010	Lock washer $\varnothing 50$ x $\varnothing 20$ x 2 
350020060	Clamping nut $\varnothing 50$ x 6 x M20x1 
350020020	*Clamping nut with balancing option $\varnothing 50$ x 8,5 M20x1,0 

Schneeberger HSK50 // Shaft $\varnothing 20$ mm // RS $\varnothing 50$ mm

For Schneeberger tool grinding machines with ring set $\varnothing 50$ mm

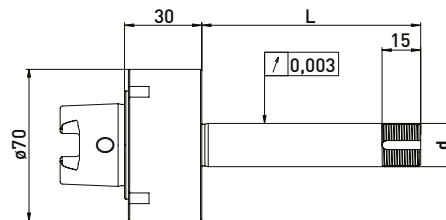
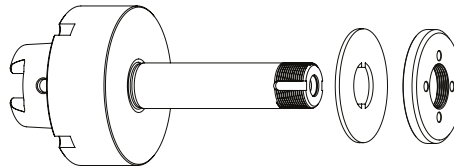
GWA HSK50 // $\varnothing 20$ mm // RS $\varnothing 50$ mm



Delivered equipped:
Ring set $\varnothing 50$ mm, lock washer and clamping nut

Item No.	HSK	d	L	Ring set $\varnothing 50$ mm		
				B 20	B 10	B 4
300043012	HSK50	20	45	-	2	3
300043022	HSK50	20	85	2	2	3
300043032	HSK50	20	150	4	4	4

GWA HSK50 // $\varnothing 20$ mm // without RS



Delivered equipped:
Lock washer and clamping nut

Item No.	HSK	d	L
300043011	HSK50	20	45
300043021	HSK50	20	85
300043031	HSK50	20	150

Accessories Schneeberger grinding wheel adapter HSK50 // Shaft $\varnothing 20$ mm // Ring set $\varnothing 50$ mm

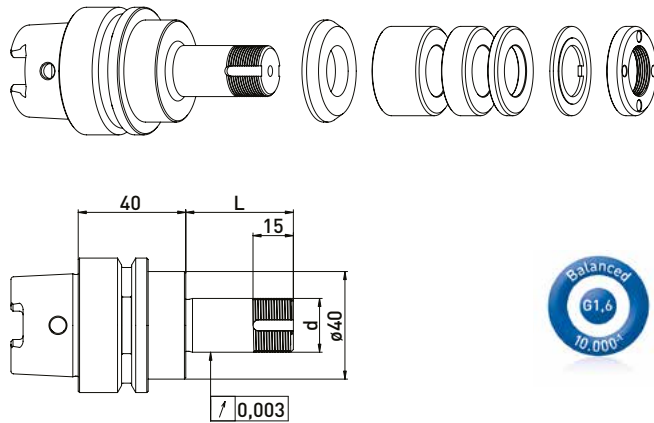
Item No.	Description	
350050010	Universal assembly device $\varnothing 50$	
350040010	Clamping nut wrench TK 27 for $\varnothing 20$	
350020021	*Balancing weight pair for clamping nut $\varnothing 50$ // 100gmm	
213011050	Clamping screw Schneeberger M8/M8 x 62	

Item No.	Description	
350011020	Spacer Ring $\varnothing 50 \times \varnothing 20 \times 20$	
350011010	Spacer Ring $\varnothing 50 \times \varnothing 20 \times 10$	
350011004	Spacer Ring $\varnothing 50 \times \varnothing 20 \times 4$	
350030010	Lock washer $\varnothing 50 \times \varnothing 20 \times 2$	
350020060	Clamping nut $\varnothing 50 \times 6 \times M20 \times 1$	
350020020	*Clamping nut with balancing option $\varnothing 50 \times 8,5 \times M20 \times 1,0$	

Schütte HSK50 // Shaft $\varnothing 20$ mm // RS $\varnothing 35$ mm

For Schütte tool grinding machines with ring set $\varnothing 35$ mm
Series 205

GWA HSK50 // $\varnothing 20$ mm // RS $\varnothing 35$ mm

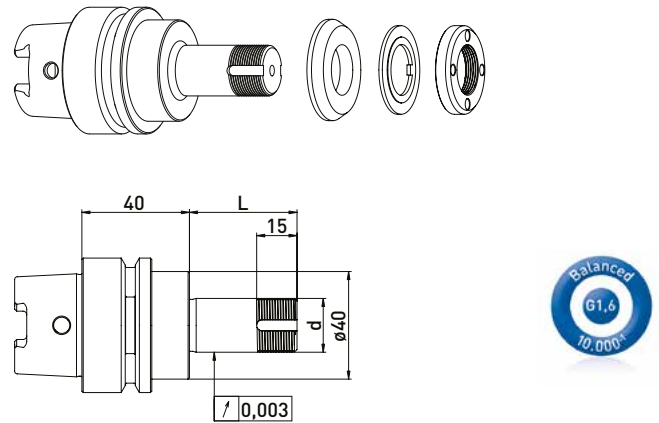


Delivered equipped:
 Reducing washer, ring set $\varnothing 35$ mm, lock washer and clamping nut

Ring set $\varnothing 35$ mm

Item No.	HSK	d	L	B 20	B 10	B 4
300012512	HSK50	20	40	-	1	3
300012522	HSK50	20	60	1	1	3
300012532	HSK50	20	75	1	2	4
300012542	HSK50	20	85	2	1	4
300012552	HSK50	20	100	2	3	3

GWA HSK50 // $\varnothing 20$ mm // without RS



Delivered equipped:
 Reducing washer, lock washer and clamping nut

Item No.	HSK	d	L
300012511	HSK50	20	40
300012521	HSK50	20	60
300012531	HSK50	20	75
300012541	HSK50	20	85
300012551	HSK50	20	100

Accessories Schütte grinding wheel adapter HSK50 // Shaft $\varnothing 20$ mm // Ring set $\varnothing 35$ mm

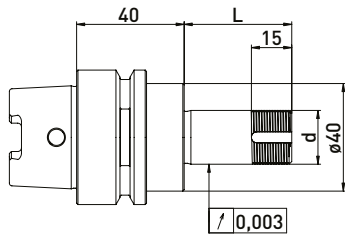
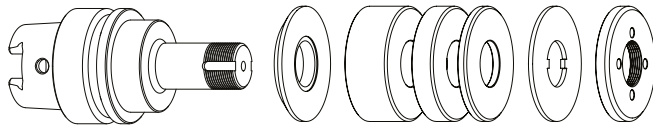
Item No.	Description	
350050010	Universal assembly device $\varnothing 50$	
350040010	*Clamping nut wrench TK 27 for $\varnothing 20$	
350040040	*Clamping nut wrench TK29 for $\varnothing 20$ for clamping nut with blancing option	
350020081	*Balancing weight pair for clamping nut $\varnothing 35$ // 40gmm	

Item No.	Description	
350012020	Spacer Ring $\varnothing 35 \times \varnothing 20 \times 20$	
350012010	Spacer Ring $\varnothing 35 \times \varnothing 20 \times 10$	
350012004	Spacer Ring $\varnothing 35 \times \varnothing 20 \times 4$	
350015006	Reducing washer $\varnothing 40 \times \varnothing 35 \times \varnothing 20 \times 6$	
350030020	Lock washer $\varnothing 35 \times \varnothing 20 \times 2$	
350020030	*Clamping nut $\varnothing 35 \times 6$ M20x1	
350020080	*Clamping nut with balancing option $\varnothing 35 \times \varnothing 40 \times 8 \times$ M20x1	
350015005	Support washer $\varnothing 35 \times \varnothing 60 \times \varnothing 20 \times 6$	

Schütte HSK50 // Shaft $\varnothing 20$ mm // RS $\varnothing 50$ mm

For Schütte tool grinding machines with ring set $\varnothing 50$ mm
Series 205

GWA HSK50 // $\varnothing 20$ mm // RS $\varnothing 50$ mm

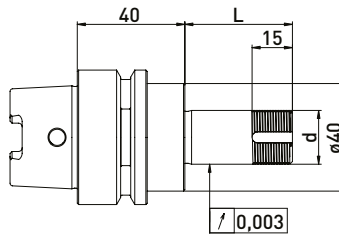
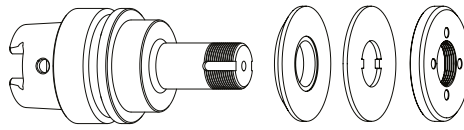


Delivered equipped:
 Ring set $\varnothing 50$ mm, lock washer and clamping nut

Ring set $\varnothing 50$ mm

Item No.	HSK	d	L	B 20	B 10	B 4
300012012	HSK50	20	40	-	1	3
300012022	HSK50	20	60	1	1	3
300012032	HSK50	20	75	1	2	4
300012042	HSK50	20	85	2	1	4
300012052	HSK50	20	100	2	3	3

GWA HSK50 // $\varnothing 20$ mm // without RS



Delivered equipped:
 Lock washer and clamping nut

Item No.	HSK	d	L
300012011	HSK50	20	40
300012021	HSK50	20	60
300012031	HSK50	20	75
300012041	HSK50	20	85
300012051	HSK50	20	100

Accessories Schütte grinding wheel adapter HSK50 // Shaft $\varnothing 20$ mm // Ring set $\varnothing 50$ mm

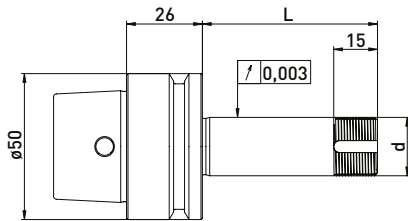
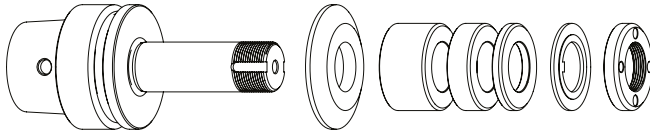
Item No.	Description
350050010	Universal assembly device $\varnothing 50$
350040010	Clamping nut wrench TK 27 for $\varnothing 20$
350020021	*Balancing weight pair for clamping nut $\varnothing 50$ // 100gmm

Item No.	Description
350011020	Spacer Ring $\varnothing 50 \times \varnothing 20 \times 20$
350011010	Spacer Ring $\varnothing 50 \times \varnothing 20 \times 10$
350011004	Spacer Ring $\varnothing 50 \times \varnothing 20 \times 4$
350030010	Lock washer $\varnothing 50 \times \varnothing 20 \times 2$
350020060	Clamping nut $\varnothing 50 \times 6 \times M20 \times 1$
350020020	*Clamping nut with balancing option $\varnothing 50 \times 8,5 M20 \times 1,0$
350015002	Reducing washer $\varnothing 40 \times \varnothing 50 \times \varnothing 20 \times 6$

Schütte HSK-E50 // Shaft $\varnothing 20$ mm // RS $\varnothing 35$ mm

For Schütte tool grinding machines with ring set $\varnothing 35$ mm
Series 305

GWA HSK-E50 // $\varnothing 20$ mm // RS $\varnothing 35$ mm

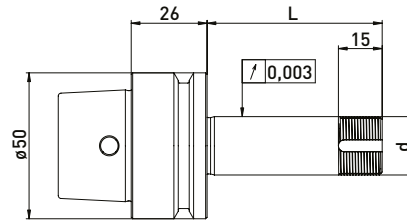
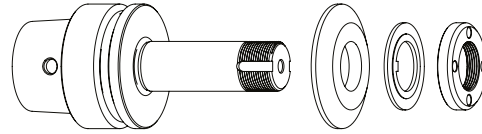


Delivered equipped:
 Reducing washer, ring set $\varnothing 35$ mm, lock washer and clamping nut

Ring set $\varnothing 35$ mm

Item No.	HSK	d	L	B 20	B 10	B 4
300052512	HSK-E50	20	40	-	1	3
300052522	HSK-E50	20	60	1	1	3
300052532	HSK-E50	20	85	2	1	4

GWA HSK-E50 // $\varnothing 20$ mm // without RS



Delivered equipped:
 Reducing washer, lock washer and clamping nut

Item No.	HSK	d	L
300052511	HSK-E50	20	40
300052521	HSK-E50	20	60
300052531	HSK-E50	20	85

Accessories Schütte grinding wheel adapter HSK-E50 // Shaft $\varnothing 20$ mm // Ring set $\varnothing 35$ mm

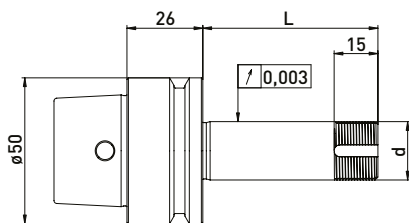
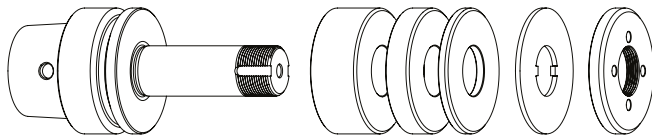
Item No.	Description	
350050010	Universal assembly device $\varnothing 50$	
350040010	*Clamping nut wrench TK 27 for $\varnothing 20$	
350040040	*Clamping nut wrench TK29 for $\varnothing 20$ for clamping nut with blancing option	
350020081	*Balancing weight pair for clamping nut $\varnothing 35$ // 40gmm	

Item No.	Description	
350012020	Spacer Ring $\varnothing 35 \times \varnothing 20 \times 20$	
350012010	Spacer Ring $\varnothing 35 \times \varnothing 20 \times 10$	
350012004	Spacer Ring $\varnothing 35 \times \varnothing 20 \times 4$	
350015001	Reducing washer $\varnothing 50 \times \varnothing 35 \times \varnothing 20 \times 6$	
350030020	Lock washer $\varnothing 35 \times \varnothing 20 \times 2$	
350020030	*Clamping nut $\varnothing 35 \times 6$ M20x1	
350020080	*Clamping nut with balancing option $\varnothing 35 \times \varnothing 40 \times 8 \times$ M20x1	
350015005	Support washer $\varnothing 35 \times \varnothing 60 \times \varnothing 20 \times 6$	

Schütte HSK-E50 // Shaft $\varnothing 20$ mm // RS $\varnothing 50$ mm

For Schütte tool grinding machines with ring set $\varnothing 50$ mm
Series 305

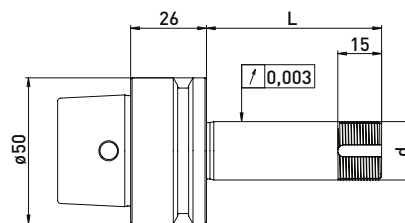
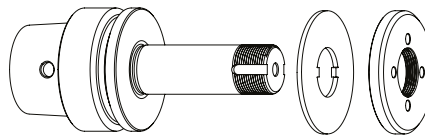
GWA HSK-E50 // $\varnothing 20$ mm // RS $\varnothing 50$ mm



Delivered equipped:
 Ring set $\varnothing 50$ mm, lock washer and clamping nut

Item No.	HSK	d	L	Ring set $\varnothing 50$ mm		
				B 20	B 10	B 4
300052012	HSK-E50	20	40	-	1	4
300052022	HSK-E50	20	60	1	1	4
300052032	HSK-E50	20	85	2	2	3

GWA HSK-E50 // $\varnothing 20$ mm // without RS



Delivered equipped:
 Lock washer and clamping nut

Item No.	HSK	d	L
300052011	HSK-E50	20	40
300052021	HSK-E50	20	60
300052031	HSK-E50	20	85

Accessories Schütte grinding wheel adapter HSK-E50 // Shaft $\varnothing 20$ mm // Ring set $\varnothing 50$ mm

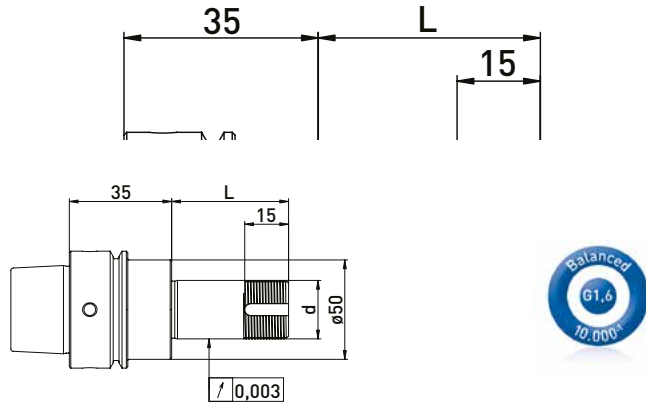
Item No.	Description	
350050010	Universal assembly device $\varnothing 50$	
350040010	Clamping nut wrench TK 27 for $\varnothing 20$	
350020021	*Balancing weight pair for clamping nut $\varnothing 50$ // 100gmm	

Item No.	Description	
350011020	Spacer Ring $\varnothing 50 \times \varnothing 20 \times 20$	
350011010	Spacer Ring $\varnothing 50 \times \varnothing 20 \times 10$	
350011004	Spacer Ring $\varnothing 50 \times \varnothing 20 \times 4$	
350030010	Lock washer $\varnothing 50 \times \varnothing 20 \times 2$	
350020060	Clamping nut $\varnothing 50 \times 6 \times M20 \times 1$	
350020020	*Clamping nut with balancing option $\varnothing 50 \times 8,5 M20 \times 1,0$	

SMP HSK-E40 // Shaft $\varnothing 20$ mm // RS $\varnothing 35$ mm

For SMP tool grinding machines with ring set $\varnothing 35$ mm

GWA HSK-E40 // $\varnothing 20$ mm // RS $\varnothing 35$ mm

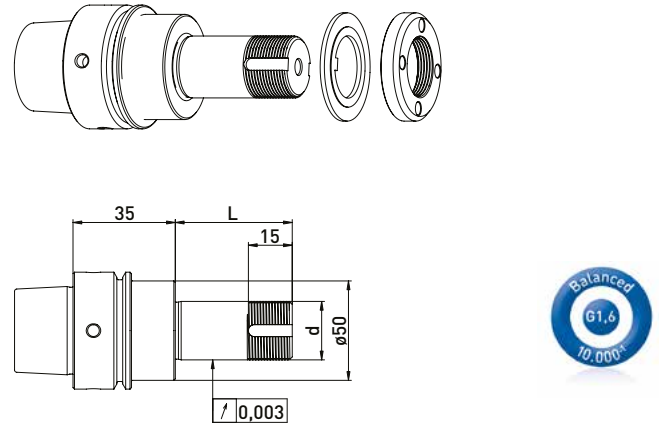


Delivered equipped:
Reducing washer, ring set $\varnothing 35$ mm, lock washer and clamping nut

Ring set $\varnothing 35$ mm

Item No.	HSK	d	L	Ring set $\varnothing 35$ mm		
				B 20	B 10	B 4
300122512	HSK-E40	20	40	-	1	4
300122522	HSK-E50	20	60	1	1	4
300122532	HSK-E40	20	100	2	3	4

GWA HSK-E40 // $\varnothing 20$ mm // without RS



Delivered equipped:
Reducing washer, lock washer and clamping nut

Item No.	HSK	d	L
300122511	HSK-E40	20	40
300122521	HSK-E40	20	60
300122531	HSK-E40	20	100

Accessories SMP grinding wheel adapter HSK-E40 // Shaft $\varnothing 20$ mm // Ring set $\varnothing 35$ mm

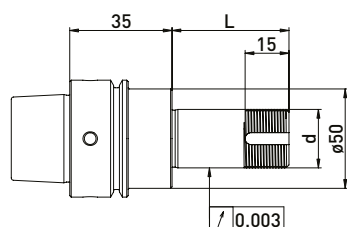
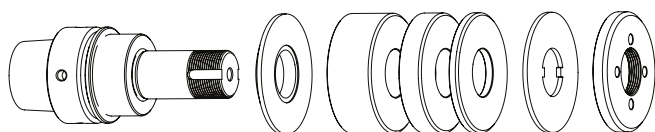
Item No.	Description	
350050050	Assembly device $\varnothing 40$	
350040010	*Clamping nut wrench TK 27 for $\varnothing 20$	
350040040	*Clamping nut wrench TK29 for $\varnothing 20$ for clamping nut with blancing option	
350020081	*Balancing weight pair for clamping nut $\varnothing 35$ // 40gmm	

Item No.	Description	
350012020	Spacer Ring $\varnothing 35 \times \varnothing 20 \times 20$	
350012010	Spacer Ring $\varnothing 35 \times \varnothing 20 \times 10$	
350012004	Spacer Ring $\varnothing 35 \times \varnothing 20 \times 4$	
350030020	Lock washer $\varnothing 35 \times \varnothing 20 \times 2$	
350020030	*Clamping nut $\varnothing 35 \times 6$ M20x1	
350020080	*Clamping nut with balancing option $\varnothing 35 \times \varnothing 40 \times 8 \times$ M20x1	
350015005	Support washer $\varnothing 35 \times \varnothing 60 \times \varnothing 20 \times 6$	

SMP HSK-E40 // Shaft $\varnothing 20$ mm // RS $\varnothing 50$ mm

For SMP tool grinding machines with ring set $\varnothing 50$ mm

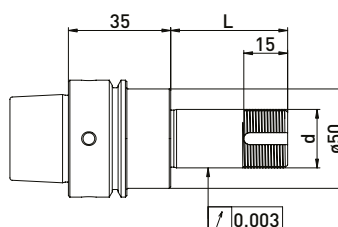
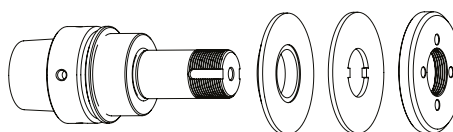
GWA HSK-E40 // $\varnothing 20$ mm // RS $\varnothing 50$ mm



Delivered equipped:
Ring set $\varnothing 50$ mm, lock washer and clamping nut

Item No.	HSK	d	L	Ring set $\varnothing 50$ mm		
				B 20	B 10	B 4
300122012	HSK-E40	20	40	-	1	3
300122022	HSK-E50	20	60	1	1	3
300122032	HSK-E40	20	100	2	3	3

GWA HSK-E40 // $\varnothing 20$ mm // without RS



Delivered equipped:
Lock washer and clamping nut

Item No.	HSK	d	L
300122011	HSK-E40	20	40
300122021	HSK-E40	20	60
300122031	HSK-E40	20	100

Accessories SMP grinding wheel adapter HSK-E40 // Shaft $\varnothing 20$ mm // Ring set $\varnothing 50$ mm

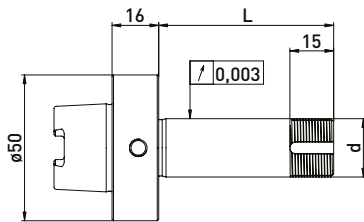
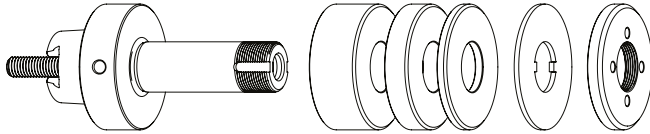
Item No.	Description	
350050050	Assembly device $\varnothing 40$	
350040010	Clamping nut wrench TK 27 for $\varnothing 20$	
350020021	*Balancing weight pair for clamping nut $\varnothing 50$ // 100gmm	

Item No.	Description	
350011020	Spacer Ring $\varnothing 50 \times \varnothing 20 \times 20$	
350011010	Spacer Ring $\varnothing 50 \times \varnothing 20 \times 10$	
350011004	Spacer Ring $\varnothing 50 \times \varnothing 20 \times 4$	
350015001	Reducing washer $\varnothing 50 \times \varnothing 35 \times \varnothing 20 \times 6$	
350030010	Lock washer $\varnothing 50 \times \varnothing 20 \times 2$	
350020060	Clamping nut $\varnothing 50 \times 6 \times M20 \times 1$	
350020020	*Clamping nut with balancing option $\varnothing 50 \times 8,5 M20 \times 1,0$	

Strausak similar HSK50 // Shaft $\varnothing 20$ mm // RS $\varnothing 50$ mm

For Strausak Promat tool grinding machines for Ring set $\varnothing 50$ mm

GWA similar HSK50 // $\varnothing 20$ mm // RS $\varnothing 50$ mm

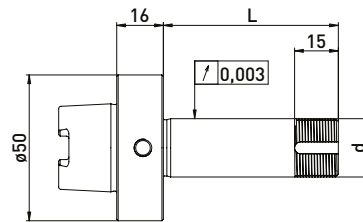
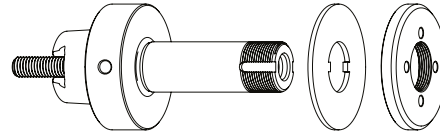


Delivered equipped:
Ring set $\varnothing 50$ mm, lock washer, clamping nut and clamping screw

Ring set $\varnothing 50$ mm

Item No.	taper	d	L	Ring set $\varnothing 50$ mm		
				B 20	B 10	B 4
300062032	similar HSK50	20	60	1	1	4

GWA similar HSK50 // $\varnothing 20$ mm // without RS



Delivered equipped:
Lock washer, clamping nut and clamping screw

Item No.	taper	d	L
300062031	similar HSK50	20	60

Accessories Strausak Promat grinding wheel adapter similar HSK50 // Shaft $\varnothing 20$ mm // Ring set $\varnothing 50$ mm

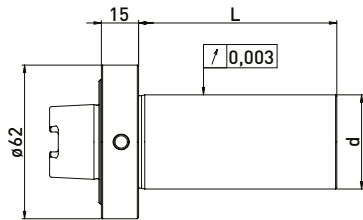
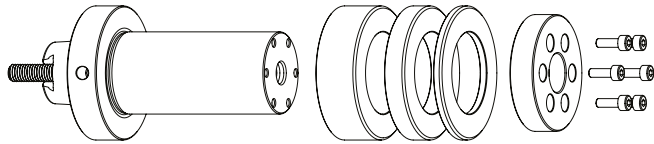
Item No.	Description	
350050010	Universal assembly device $\varnothing 50$	
350040010	Clamping nut wrench TK 27 for $\varnothing 20$	
350020021	*Balancing weight pair for clamping nut $\varnothing 50$ // 100gmm	

Item No.	Description	
350011020	Spacer Ring $\varnothing 50 \times \varnothing 20 \times 20$	
350011010	Spacer Ring $\varnothing 50 \times \varnothing 20 \times 10$	
350011004	Spacer Ring $\varnothing 50 \times \varnothing 20 \times 4$	
350015003	Support washer $\varnothing 50 \times \varnothing 75 \times \varnothing 20 \times 6$	
350030010	Lock washer $\varnothing 50 \times \varnothing 20 \times 2$	
350020060	Clamping nut $\varnothing 50 \times 6 \times M20 \times 1$	
350020020	*Clamping nut with balancing option $\varnothing 50 \times 8,5 M20 \times 1,0$	

Strausak similar HSK50 // Shaft $\varnothing 38$ mm // RS 62 mm

For Strausak Promat tool grinding machines with ring set $\varnothing 62$ mm

GWA similar HSK50 // $\varnothing 38$ mm // RS 62 mm

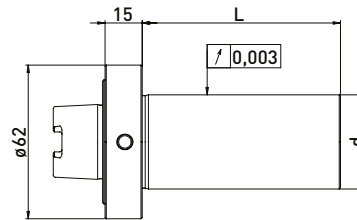
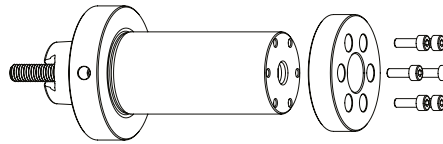


Delivered equipped:

Ring set $\varnothing 62$ mm, clamping flange, 4pc. allen screw, clamping screw

Item No.	Internal taper	d	L	Ring set $\varnothing 62$ mm		
				B 20	B 10	B 4
300062332	similar HSK50	80	38	2	2	4

GWA similar HSK50 // $\varnothing 38$ mm // without RS



Delivered equipped:

Clamping flange, 4pc. allen screw, clamping screw

Item No.	Internal taper	d	L
300062331	similar HSK50	38	80

Accessories Strausak Promat grinding wheel adapter similar HSK50 // Shaft $\varnothing 20$ mm // Ring set $\varnothing 50$ mm

Item No.	Description
350050040	Assembly device Strausak $\varnothing 62$



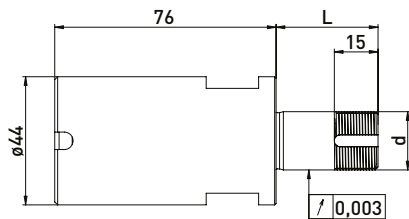
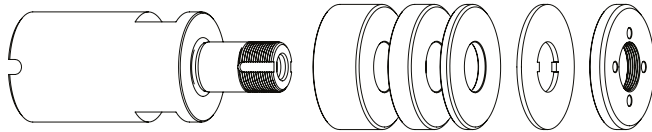
Item No.	Description
350013320	Spacer Ring $\varnothing 62 \times \varnothing 38 \times 20$
350013310	Spacer Ring $\varnothing 62 \times \varnothing 38 \times 10$
350013304	Spacer Ring $\varnothing 62 \times \varnothing 38 \times 4$
350020040	Clamping flange $\varnothing 54 \times 12$



Strausak Internal taper // Shaft $\varnothing 20\text{mm}$ // RS $\varnothing 50\text{ mm}$

For Strausak Fleximat tool grinding machines with ring set $\varnothing 50\text{ mm}$

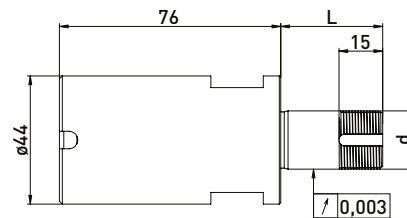
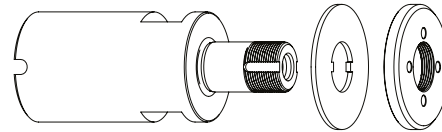
GWA Strausak Internal taper // $\varnothing 20\text{mm}$ // RS $\varnothing 50\text{ mm}$



Delivered equipped:
Ring set $\varnothing 50\text{ mm}$, lock washer, clamping nut and clamping screw

Item No.	Internal taper	d	L	Ring set $\varnothing 50\text{ mm}$		
				B 20	B 10	B 4
300063012	Strausak	20	35	-	1	3
300063022	Strausak	20	60	1	1	4

GWA Strausak Internal taper // $\varnothing 20\text{mm}$ // without RS



Delivered equipped:
Lock washer, clamping nut and clamping screw

Item No.	Internal taper	d	L
300063011	Strausak	20	35
300063021	Strausak	20	60

Accessories Strausak Fleximat grinding wheel adapter Strausak Internal taper // Shaft $\varnothing 20\text{ mm}$ // Ring set $\varnothing 50\text{ mm}$

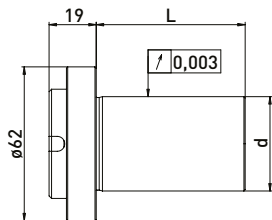
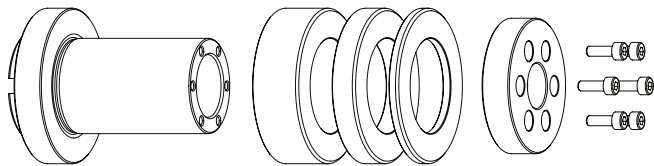
Item No.	Description	
350050010	*Universal assembly device $\varnothing 50$	
350015007	*Adapter sleeve Strausak clamping diameter $\varnothing 44$ (Reduction for Strausak $\varnothing 44 \times \varnothing 50$ for universal assembly device)	
350040010	Clamping nut wrench TK 27 for $\varnothing 20$	
350020021	*Balancing weight pair for clamping nut $\varnothing 50 // 100\text{gmm}$	

Item No.	Description	
350011020	Spacer Ring $\varnothing 50 \times \varnothing 20 \times 20$	
350011010	Spacer Ring $\varnothing 50 \times \varnothing 20 \times 10$	
350011004	Spacer Ring $\varnothing 50 \times \varnothing 20 \times 4$	
350030010	Lock washer $\varnothing 50 \times \varnothing 20 \times 2$	
350020060	Clamping nut $\varnothing 50 \times 6 \times \text{M}20 \times 1$	
350020020	*Clamping nut with balancing option $\varnothing 50 \times 8,5 \text{ M}20 \times 1,0$	

Strausak Internal taper // Shaft $\varnothing 38\text{mm}$ // RS 62 mm

For Strausak Fleximat tool grinding machines with ring set $\varnothing 62$ mm

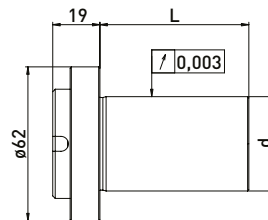
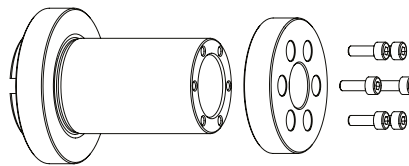
GWA similar HSK50 // $\varnothing 38\text{mm}$ // RS 62 mm



Delivered equipped:
Ring set $\varnothing 62$ mm, clamping flange, allen screw 4pc., clamping screw

Item No.	Internal taper	d	L	Ring set $\varnothing 62$ mm		
				B 20	B 10	B 4
300063332	Strausak	38	60	1	2	4

GWA similar HSK50 // $\varnothing 38$ mm // without RS



Delivered equipped:
clamping flange, allen screw 4pc., clamping screw

Item No.	Internal taper	d	L
300062031	Strausak	38	60

Accessories Strausak Fleximat grinding wheel adapter Strausak Internal taper // Shaft $\varnothing 38$ mm // Ring set $\varnothing 62\text{mm}$

Item No.	Description
350050040	Assembly device Strausak $\varnothing 62$



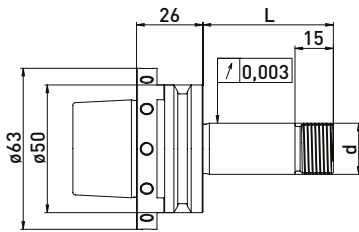
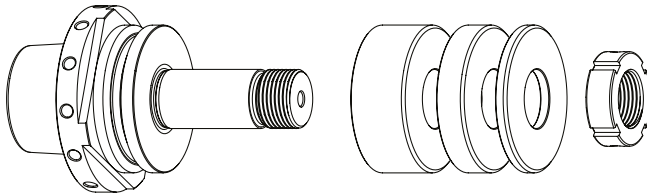
Item No.	Description
350013320	Spacer Ring $\varnothing 62 \times \varnothing 38 \times 20$
350013310	Spacer Ring $\varnothing 62 \times \varnothing 38 \times 10$
350013304	Spacer Ring $\varnothing 62 \times \varnothing 38 \times 4$
350020040	Clamping flange $\varnothing 54 \times 12$



Strausak HSK-E50 // Shaft $\varnothing 20$ mm // RS $\varnothing 50$ mm

For Strausak tool grinding machines with ring set $\varnothing 50$ mm

GWA HSK-E50 // $\varnothing 20$ mm // RS $\varnothing 50$ mm

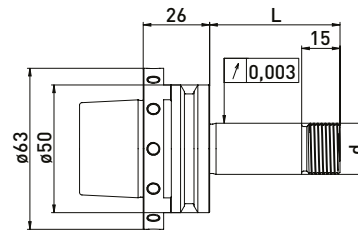
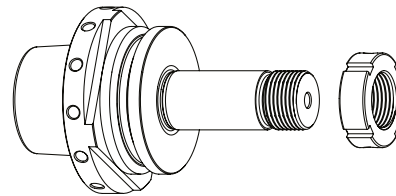


Delivered equipped:
Ring set $\varnothing 50$ mm and clamping nut

Ring set $\varnothing 50$ mm

Item No.	HSK	d	L	Ring set $\varnothing 50$ mm		
				B20	B10	B4
300050612	HSK-50	20	51	1	1	2
300050632	HSK-50	20	81	2	2	2

GWA HSK-E50 // $\varnothing 20$ mm // without RS



Delivered equipped:
Clamping nut

Item No.	HSK	d	L
300050611	HSK-50	20	51
300050631	HSK-50	20	81

Accessories Strausak grinding wheel adapter HSK-E50 // Shaft $\varnothing 20$ mm // Ring set $\varnothing 50$ mm

Item No.	Description
350040051	Hook wrench 30 - 32 mm



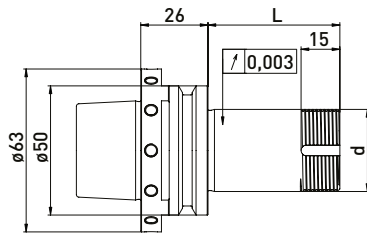
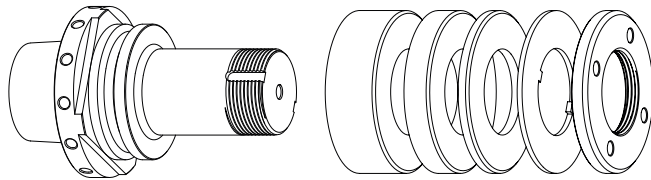
Item No.	Description
350011520	Spacer Ring Rollomatic $\varnothing 50 \times \varnothing 20 \times 20$
350011510	Spacer Ring Rollomatic $\varnothing 50 \times \varnothing 20 \times 10$
350011504	Spacer Ring Rollomatic $\varnothing 50 \times \varnothing 20 \times 4$
350020121	Clamping nut MRR20 x 1,5 M20 x 1,5 $\varnothing 32 \times 10$
350015003	Support washer $\varnothing 50 \times \varnothing 75 \times \varnothing 20 \times 6$



Strausak HSK-E50 // Shaft $\varnothing 31,75$ mm (1¼) // RS $\varnothing 60$ mm

For Strausak tool grinding machines with ring set $\varnothing 60$ mm

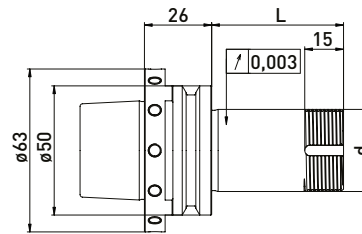
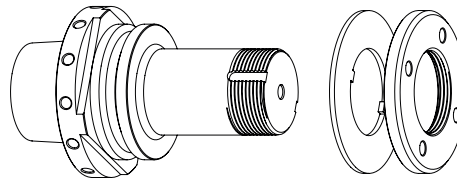
GWA HSK-E50 // Shaft $\varnothing 31,75$ mm // RS $\varnothing 60$ mm



Delivered equipped:
Ring set $\varnothing 60$ mm, lock washer and clamping nut

Item No.	HSK	d	L	Ring set $\varnothing 60$ mm		
				B 20	B 10	B 4
300150712	HSK-50E	31,75	51	-	1	3
300150732	HSK-50E	31,75	81	1	1	3



GWA HSK-E50 // Shaft $\varnothing 31,75$ mm // without RS







Delivered equipped:
Lock washer and clamping nut

Item No.	HSK	d	L
300150711	HSK-50E	31,75	51
300150731	HSK-50E	31,75	81

Accessories Strausak grinding wheel adapter HSK-E50 // Shaft $\varnothing 31,75$ mm (1¼) // Ring set $\varnothing 60$ mm

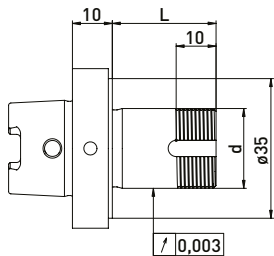
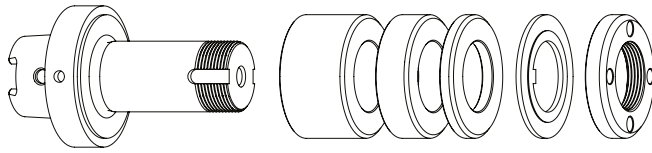
Item No.	Description
350040030	Clamping nut wrench TK39 
350020022	*Balancing weight pair for clamping nut $\varnothing 60$ // 150gmm 

Item No.	Description
350011420	Spacer Ring $\varnothing 60 \times \varnothing 31,75 \times 20$ 
350011410	Spacer Ring $\varnothing 60 \times \varnothing 31,75 \times 10$ 
350011404	Spacer Ring $\varnothing 60 \times \varnothing 31,75 \times 4$ 
350030060	Lock washer $\varnothing 60 \times \varnothing 32 \times 1,8$ 
350020066	Clamping nut $\varnothing 60 \times 6 \times M32 \times 1,5$ 
350020022	*Clamping nut with balancing option $\varnothing 60 \times 9 \times M32 \times 1,5$ 

TTB HSK-F40 // Shaft $\varnothing 20$ mm // RS $\varnothing 35$ mm

For TTB tool grinding machines with ring set $\varnothing 35$ mm

GWA HSK-F40 // $\varnothing 20$ mm // RS $\varnothing 35$ mm



Delivered equipped:

Ring set $\varnothing 35$ mm, lock washer and clamping nut

Ring set $\varnothing 35$ mm

Item No.	HSK	d	L	B 20	B 10	B 4
300132012	HSK-F40	20	26	-	-	4
300132022	HSK-F40	20	42	-	2	3
300132032	HSK-F40	20	60	1	2	3

Accessories TTB grinding wheel adapter HSK-F40 // Shaft $\varnothing 20$ mm // Ring set $\varnothing 35$ mm

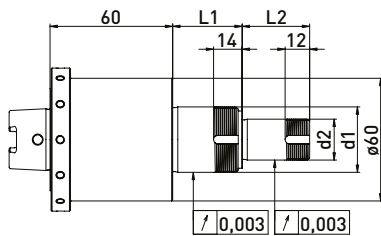
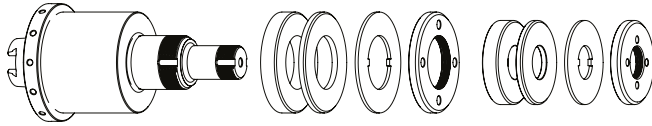
Item No.	Description	
350050050	Assembly device $\varnothing 40$	
350040010	*Clamping nut wrench TK 27 for $\varnothing 20$	
350040040	*Clamping nut wrench TK29 for $\varnothing 20$ for clamping nut with blancing option	
350020081	*Balancing weight pair for clamping nut $\varnothing 35$ // 40gmm	

Item No.	Description	
350012020	Spacer Ring $\varnothing 35 \times \varnothing 20 \times 20$	
350012010	Spacer Ring $\varnothing 35 \times \varnothing 20 \times 10$	
350012004	Spacer Ring $\varnothing 35 \times \varnothing 20 \times 4$	
350030020	Lock washer $\varnothing 35 \times \varnothing 20 \times 2$	
350020030	*Clamping nut $\varnothing 35 \times 6$ M20x1	
350020080	*Clamping nut with balancing option $\varnothing 35 \times \varnothing 40 \times 8 \times$ M20x1	
350015005	Support washer $\varnothing 35 \times \varnothing 60 \times \varnothing 20 \times 6$	

Walter HSK40 // stepped Shaft $\varnothing 20, \varnothing 32$ // RS $\varnothing 50$ and $\varnothing 60$ mm

For Walter tool grinding machines with ring set $\varnothing 50$ and $\varnothing 60$ mm

GWA HSK40 // stepped $\varnothing 20 \varnothing 32$ mm // RS $\varnothing 50 \varnothing 60$ mm



Delivered equipped:

Ring set $\varnothing 50$ and $\varnothing 60$ mm, lock washer and clamping nut

Item No.	HSK	d1	d2	L1	L2	Ring set $\varnothing 50$ mm		Ring set $\varnothing 60$ mm	
						B 20	B4	B10	B4
300103012	HSK40	32	20	34	33	1	2	1	2

Accessories Walter grinding wheel adapter HSK40 // stepped Shaft $\varnothing 20, \varnothing 30$ // RS $\varnothing 50$ and $\varnothing 60$ mm

Accessories $\varnothing 50$ mm

Item No.	Description	
350011020	Spacer Ring $\varnothing 50 \times \varnothing 20 \times 20$	
350011010	Spacer Ring $\varnothing 50 \times \varnothing 20 \times 10$	
350011004	Spacer Ring $\varnothing 50 \times \varnothing 20 \times 4$	
350030010	Lock washer $\varnothing 50 \times \varnothing 20 \times 2$	
350020060	Clamping nut $\varnothing 50 \times 6 \times M20 \times 1$	
350020020	*Clamping nut with balancing option $\varnothing 50 \times 8,5 M20 \times 1,0$	
350020021	*Balancing weight pair for clamping nut $\varnothing 50$ // 100gmm	
350040010	Clamping nut wrench TK 27 for $\varnothing 20$	

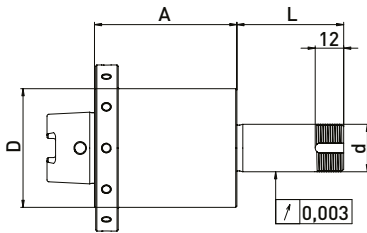
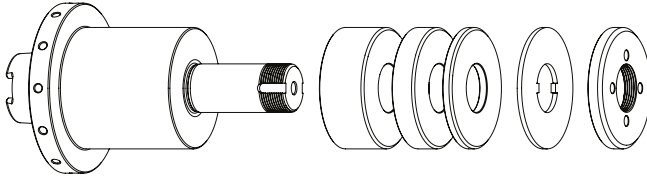
Accessories $\varnothing 60$ mm

Item No.	Description	
350011320	Spacer Ring $\varnothing 60 \times \varnothing 32 \times 20$	
350011310	Spacer Ring $\varnothing 60 \times \varnothing 32 \times 10$	
350011304	Spacer Ring $\varnothing 60 \times \varnothing 32 \times 4$	
350030060	Lock washer $\varnothing 60 \times \varnothing 32 \times 1,8$	
350020065	Clamping nut $\varnothing 60 \times 6 \times M32 \times 1$	
350040020	Clamping nut wrench TK45 for $\varnothing 32$	

Walter HSK40 // Shaft $\varnothing 20$ / Shaft $\varnothing 32$ mm // RS $\varnothing 50$ / $\varnothing 60$ mm

For Walter tool grinding machines with ring set $\varnothing 50$ and $\varnothing 60$ mm

GWA HSK40 // $\varnothing 20$ / $\varnothing 32$ mm // RS $\varnothing 50$ / $\varnothing 60$ mm



Delivered equipped:

Ring set $\varnothing 50$ mm, lock washer and clamping nut

Item No.	HSK	d	D	A	L	Ring set $\varnothing 50$ mm			Ring set $\varnothing 60$ mm		
						B 20	B 10	B 4	B 20	B 10	B 4
300103112	HSK40	20	50	60	45	-	2	3	-	-	-
300103122	HSK40	20	50	80	52	1	1	3	-	-	-
300103132	HSK40	32	60	60	42	-	-	-	-	2	3

Accessories Walter grinding wheel adapter HSK40 // Shaft $\varnothing 20$ and $\varnothing 32$ // RS $\varnothing 50$ and $\varnothing 60$ mm

Accessories $\varnothing 50$ mm

Item No.	Description	
350011020	Spacer Ring $\varnothing 50 \times \varnothing 20 \times 20$	
350011010	Spacer Ring $\varnothing 50 \times \varnothing 20 \times 10$	
350011004	Spacer Ring $\varnothing 50 \times \varnothing 20 \times 4$	
350030010	Lock washer $\varnothing 50 \times \varnothing 20 \times 2$	
350020060	Clamping nut $\varnothing 50 \times 6 \times M20 \times 1$	
350020020	*Clamping nut with balancing option $\varnothing 50 \times 8,5 M20 \times 1,0$	
350020021	*Balancing weight pair for clamping nut $\varnothing 50$ // 100gmm	
350040010	Clamping nut wrench TK 27 for $\varnothing 20$	

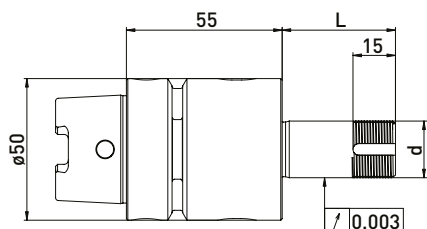
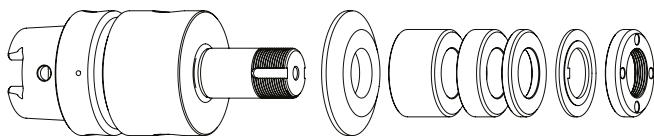
Accessories $\varnothing 60$ mm

Item No.	Description	
350011320	Spacer Ring $\varnothing 60 \times \varnothing 32 \times 20$	
350011310	Spacer Ring $\varnothing 60 \times \varnothing 32 \times 10$	
350011304	Spacer Ring $\varnothing 60 \times \varnothing 32 \times 4$	
350030060	Lock washer $\varnothing 60 \times \varnothing 32 \times 1,8$	
350020065	Clamping nut $\varnothing 60 \times 6 \times M32 \times 1$	
350040020	Clamping nut wrench TK45 for $\varnothing 32$	

Walter HSK50 // Shaft $\varnothing 20$ mm // RS $\varnothing 35$ mm

For Walter tool grinding machines with ring set $\varnothing 35$ mm

GWA HSK50 // $\varnothing 20$ mm // RS $\varnothing 35$ mm

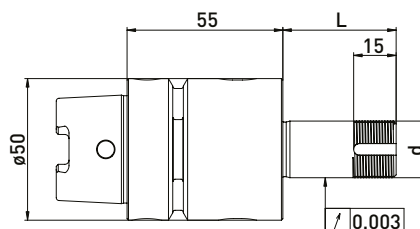
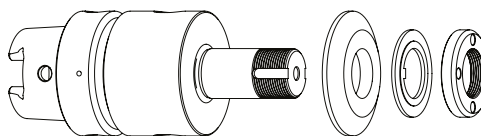


Delivered equipped:
Reducing washer, ring set $\varnothing 35$ mm, lock washer and clamping nut

Ring set $\varnothing 35$ mm

Item No.	HSK	d	L	B 20	B 10	B 4
300102512	HSK50	20	40	-	1	3
300102522	HSK50	20	60	1	1	3
300102532	HSK50	20	85	2	2	4
300102542	HSK50	20	100	2	3	3

GWA HSK50 // $\varnothing 20$ mm // without RS



Delivered equipped:
Reducing washer, lock washer and clamping nut

Item No.	HSK	d	L
300102511	HSK50	20	40
300102521	HSK50	20	60
300102531	HSK50	20	85
300102541	HSK50	20	100

Accessories Walter grinding wheel adapter HSK50 // Shaft $\varnothing 20$ mm // Ring set $\varnothing 35$ mm

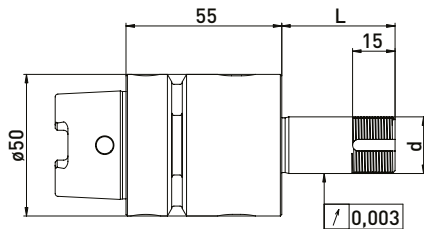
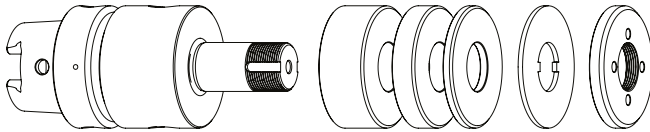
Item No.	Description	
350050010	Universal assembly device $\varnothing 50$	
350040010	*Clamping nut wrench TK 27 for $\varnothing 20$	
350040040	*Clamping nut wrench TK29 for $\varnothing 20$ for clamping nut with blancing option	
350020081	*Balancing weight pair for clamping nut $\varnothing 35$ // 40gmm	

Item No.	Description	
350012020	Spacer Ring $\varnothing 35 \times \varnothing 20 \times 20$	
350012010	Spacer Ring $\varnothing 35 \times \varnothing 20 \times 10$	
350012004	Spacer Ring $\varnothing 35 \times \varnothing 20 \times 4$	
350015001	Reducing washer $\varnothing 50 \times \varnothing 35 \times \varnothing 20 \times 6$	
350030020	Lock washer $\varnothing 35 \times \varnothing 20 \times 2$	
350020030	*Clamping nut $\varnothing 35 \times 6$ M20x1	
350020080	*Clamping nut with balancing option $\varnothing 35 \times \varnothing 40 \times 8 \times$ M20x1	
350015005	Support washer $\varnothing 35 \times \varnothing 60 \times \varnothing 20 \times 6$	

Walter HSK50 // Shaft $\varnothing 20$ mm // RS $\varnothing 50$ mm

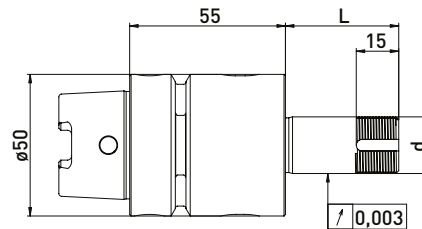
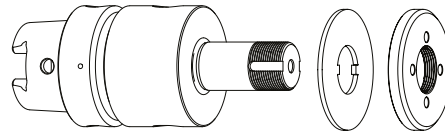
For Walter tool grinding machines with ring set $\varnothing 50$ mm

GWA HSK50 // $\varnothing 20$ mm // RS $\varnothing 50$ mm



Delivered equipped:
Ring set $\varnothing 50$ mm, lock washer and clamping nut

GWA HSK50 // $\varnothing 20$ mm // without RS



Delivered equipped:
Lock washer and clamping nut

Ring set $\varnothing 50$ mm

Item No.	HSK	d	L	B 20	B 10	B 4
300102012	HSK50	20	40	-	2	3
300102022	HSK50	20	60	1	2	3
300102032	HSK50	20	85	2	2	4
300102042	HSK50	20	100	2	3	5

Item No.	HSK	d	L
300102011	HSK50	20	40
300102021	HSK50	20	60
300102031	HSK50	20	85
300102041	HSK50	20	100

Accessories Walter grinding wheel adapter HSK50 // Shaft $\varnothing 20$ mm // Ring set $\varnothing 50$ mm

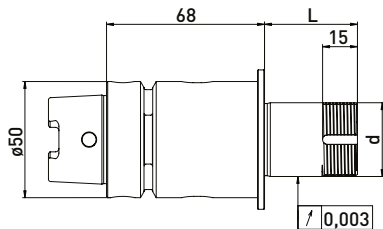
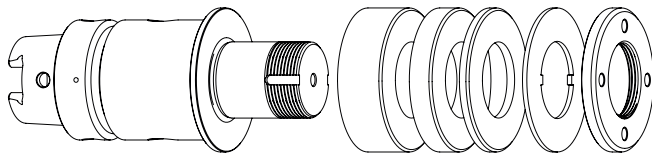
Item No.	Description	
350050010	Universal assembly device $\varnothing 50$	
350040010	Clamping nut wrench TK 27 for $\varnothing 20$	
350020021	*Balancing weight pair for clamping nut $\varnothing 50$ // 100gmm	

Item No.	Description	
350011020	Spacer Ring $\varnothing 50 \times \varnothing 20 \times 20$	
350011010	Spacer Ring $\varnothing 50 \times \varnothing 20 \times 10$	
350011004	Spacer Ring $\varnothing 50 \times \varnothing 20 \times 4$	
350015002	Reducing washer $\varnothing 40 \times \varnothing 50 \times \varnothing 20 \times 6$	
350020060	Clamping nut $\varnothing 50 \times 6 \times M20 \times 1$	
350020020	*Clamping nut with balancing option $\varnothing 50 \times 8,5 M20 \times 1,0$	

Walter HSK50 // Shaft $\varnothing 31,75$ mm (1¼) // RS $\varnothing 60$ mm

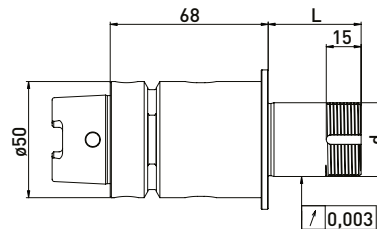
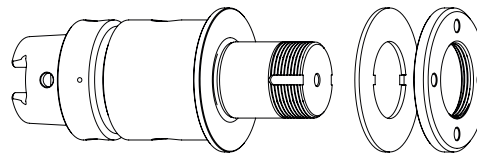
For Walter tool grinding machines with ring set $\varnothing 60$ mm

GWA HSK50 // $\varnothing 31,75$ mm (1¼) // RS $\varnothing 60$ mm



Delivered equipped:
Ring set $\varnothing 60$ mm, lock washer and clamping nut

GWA HSK50 // $\varnothing 31,75$ mm (1¼) // without RS





Delivered equipped:
Lock washer and clamping nut

Ring set $\varnothing 60$ mm

Item No.	HSK	d	L	B 20	B 10	B 4
300102112	HSK50	31,75	40	-	2	3
300102122	HSK50	31,75	60	1	2	3
300102132	HSK50	31,75	85	2	2	4
300102142	HSK50	31,75	100	3	2	3

Item No.	HSK	d	L
300102111	HSK50	31,75	40
300102121	HSK50	31,75	60
300102131	HSK50	31,75	85
300102141	HSK50	31,75	100

Accessories Walter grinding wheel adapter HSK50 // Shaft $\varnothing 31,75$ mm (1¼) // Ring set $\varnothing 60$ mm

Item No.	Description
350040030	Clamping nut wrench TK39 
350020023	*Balancing weight pair for clamping nut $\varnothing 60$ // 150gmm 

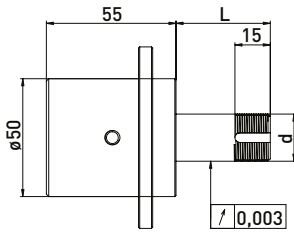
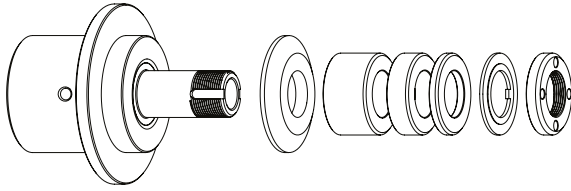
Item No.	Description
350011420	Spacer Ring $\varnothing 60$ x $\varnothing 31,75$ x 20 
350011410	Spacer Ring $\varnothing 60$ x $\varnothing 31,75$ x 10 
350011404	Spacer Ring $\varnothing 60$ x $\varnothing 31,75$ x 4 
350030060	Lock washer $\varnothing 60$ x $\varnothing 32$ x 1,8 
350020066	Clamping nut $\varnothing 60$ x 6 x M32 x 1,5 
350020022	*Clamping nut with balancing option $\varnothing 60$ x 9 M32 x 1,5 

Walter NCT // Shaft $\varnothing 20$ mm // RS $\varnothing 35$ mm

For Walter tool grinding machines with ring set $\varnothing 35$ mm

GWA NCT $\varnothing 31,75$ mm (1 1/4) // $\varnothing 20$ mm // RS $\varnothing 35$ mm

Tight with torque wrench 80nm.



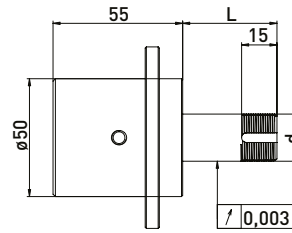
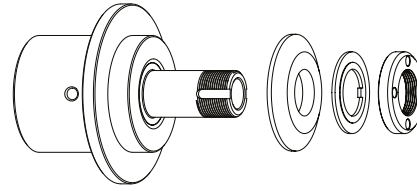
Delivered equipped:
Reducing washer, ring set $\varnothing 35$ mm, lock washer and clamping nut

Ring set $\varnothing 35$ mm

Item No.	Internal taper	d	L	B20	B10	B4
300101512	31,75	20	40	-	1	3
300101522	31,75	20	60	1	1	3
300101542	31,75	20	85	2	1	4
300101532	31,75	20	100	2	3	3

GWA NCT $\varnothing 31,75$ mm (1 1/4) // $\varnothing 20$ mm // without RS

Tight with torque wrench 80nm.



Delivered equipped:
Reducing washer, lock washer and clamping nut

Item No.	Internal taper	d	L
300101511	31,75	20	40
300101521	31,75	20	60
300101531	31,75	20	85
300101541	31,75	20	100

Accessories Walter grinding wheel adapter NCT // Shaft $\varnothing 20$ mm // Ring set $\varnothing 35$ mm

Item No.	Description	
350050010	Universal Assembly device $\varnothing 50$	
350040010	*Clamping nut wrench TK 27 for $\varnothing 20$	
350040040	*Clamping nut wrench TK29 for $\varnothing 20$ for clamping nut with blancing option	
350020081	*Balancing weight pair for clamping nut $\varnothing 35$ // 40gmm	
300101001	Installation system for NCT63 Walter	
300101003	Assembly wrench for installation system NCT63 M20 x 1,5	

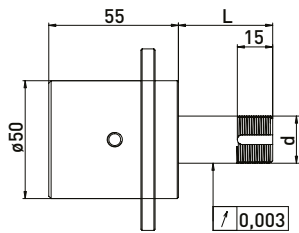
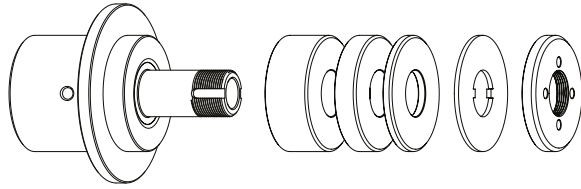
Item No.	Description	
350012020	Spacer Ring $\varnothing 35$ x $\varnothing 20$ x 20	
350012010	Spacer Ring $\varnothing 35$ x $\varnothing 20$ x 10	
350012004	Spacer Ring $\varnothing 35$ x $\varnothing 20$ x 4	
350015001	Reducing washer $\varnothing 50$ x $\varnothing 35$ x $\varnothing 20$ x 6	
350030020	Lock washer $\varnothing 35$ x $\varnothing 20$ x 2	
350020030	*Clamping nut $\varnothing 35$ x 6 M20x1	
350020080	*Clamping nut with balancing option $\varnothing 35$ x $\varnothing 40$ x 8 x M20x1	
350015005	Support washer $\varnothing 35$ x $\varnothing 60$ x $\varnothing 20$ x 6	

Walter NCT // Shaft $\varnothing 20$ mm // RS $\varnothing 50$ mm

For Walter tool grinding machines with ring set $\varnothing 50$ mm

GWA NCT $\varnothing 31,75$ mm (1¼) // $\varnothing 20$ mm // RS $\varnothing 50$ mm

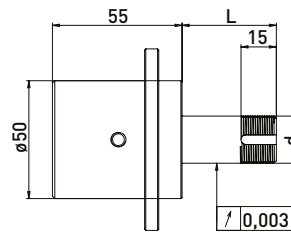
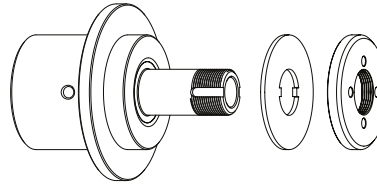
Tight with torque wrench 80nm.



Delivered equipped:
Ring set $\varnothing 50$ mm, lock washer and clamping nut

GWA NCT $\varnothing 31,75$ mm (1¼) // $\varnothing 20$ mm // without RS

Tight with torque wrench 80nm.



Delivered equipped:
Lock washer and clamping nut

Ring set $\varnothing 35$ mm

Item No.	Internal taper	d	L	B 20	B 10	B 4
300101012	31,75	20	40	-	1	3
300101022	31,75	20	60	1	1	3
300101032	31,75	20	85	2	1	4
300101042	31,75	20	100	2	3	3

Item No.	Internal taper	d	L
300101011	31,75	20	40
300101021	31,75	20	60
300101031	31,75	20	85
300101041	31,75	20	100

Accessories Walter grinding wheel adapter NCT // Shaft $\varnothing 20$ mm // Ring set $\varnothing 50$ mm

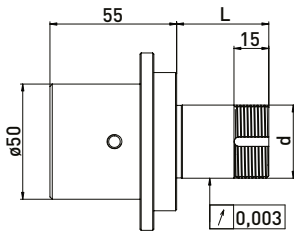
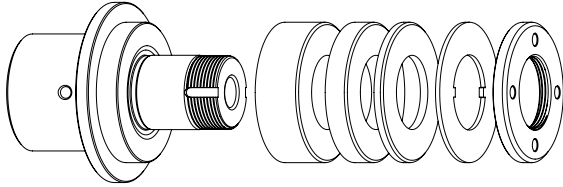
Item No.	Description	
350050010	Universal Assembly device $\varnothing 50$	
350040010	Clamping nut wrench TK 27 for $\varnothing 20$	
350020021	*Balancing weight pair for clamping nut $\varnothing 50$ // 100gmm	
300101001	Installation system for NCT63 Walter	
300101003	Assembly wrench for installation system NCT63 M20 x 1,5	

Item No.	Description	
350011020	Spacer Ring $\varnothing 50$ x $\varnothing 20$ x 20	
350011010	Spacer Ring $\varnothing 50$ x $\varnothing 20$ x 10	
350011004	Spacer Ring $\varnothing 50$ x $\varnothing 20$ x 4	
350030010	Lock washer $\varnothing 50$ x $\varnothing 20$ x 2	
350020060	Clamping nut $\varnothing 50$ x 6 x M20x1	
350020020	*Clamping nut with balancing option $\varnothing 50$ x 8,5 M20x1,0	

Walter NCT // Shaft $\varnothing 31,75$ mm (1¼) // RS $\varnothing 60$ mm

For Walter tool grinding machines with ring set $\varnothing 60$ mm

GWA NCT $\varnothing 31,75$ mm // $\varnothing 31,75$ mm (1¼) // RS $\varnothing 60$ mm

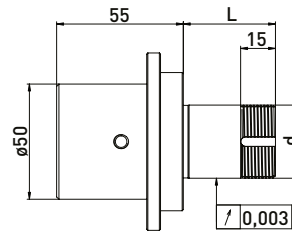
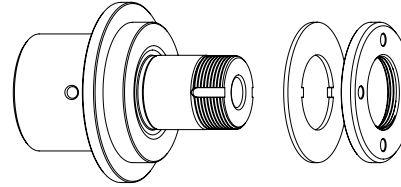


Delivered equipped:
Ring set $\varnothing 60$ mm, lock washer and clamping nut

Ring set $\varnothing 60$ mm

Item No.	Internal taper	d	L	B 20	B 10	B 4
300101112	31,75	31,75	40	-	1	5
300101122	31,75	31,75	60	1	1	5
300101132	31,75	31,75	85	1	4	4
300101142	31,75	31,75	100	2	3	5

GWA NCT $\varnothing 31,75$ mm (1¼) // $\varnothing 31,75$ mm (1¼) // without RS



Delivered equipped:
Lock washer and clamping nut

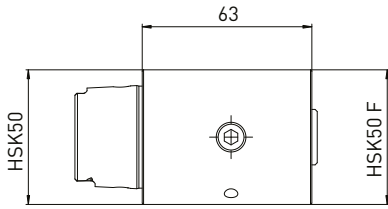
Item No.	Internal taper	d	L
300101111	31,75	31,75	40
300101121	31,75	31,75	60
300101131	31,75	31,75	85
300101141	31,75	31,75	100

Accessories Walter grinding wheel adapter NCT // Shaft $\varnothing 31,75$ mm (1¼) // Ring set $\varnothing 50$ mm

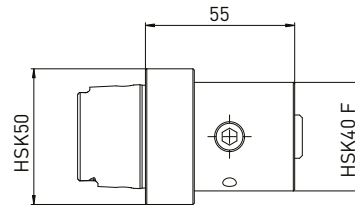
Item No.	Description	
350050010	Universal Assembly device $\varnothing 50$	
350040030	Clamping nut wrench TK39	
350020023	*Balancing weight pair for clamping nut $\varnothing 60$ // 150gmm	
300101001	Installation system for NCT63 Walter	
300101003	Assembly wrench for installation system NCT63 M20 x 1,5	

Item No.	Description	
350011420	Spacer Ring $\varnothing 60$ x $\varnothing 31,75$ x 20	
350011410	Spacer Ring $\varnothing 60$ x $\varnothing 31,75$ x 10	
350011404	Spacer Ring $\varnothing 60$ x $\varnothing 31,75$ x 4	
350030060	Lock washer $\varnothing 60$ x $\varnothing 32$ x 1,8	
350020066	Clamping nut $\varnothing 60$ x 6 x M32 x 1,5	
350020022	*Clamping nut with balancing option $\varnothing 60$ x 9 M32 x 1,5	

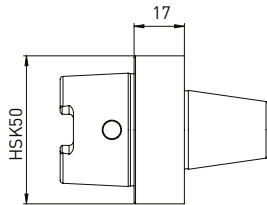
Adapter piece for **tool grinding machines, dressing machines, presetting devices, balancing machines**



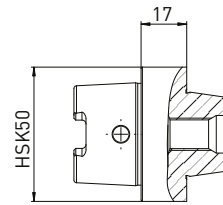
Item No.	Description
350130020	Adapter piece HSK50 on C x HSK40 A/C/E - HSK50 B/D/F



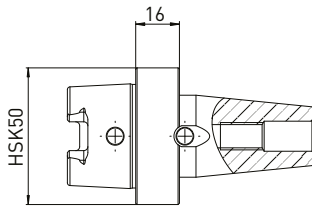
Item No.	Description
350130021	Adapter piece HSK50 on C x HSK32 A/C/E - HSK40 B/D/F



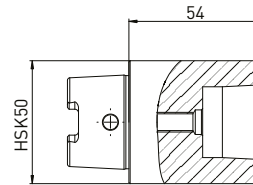
Item No.	Description
350130034	Adapter piece HSK50 on ANCA taper



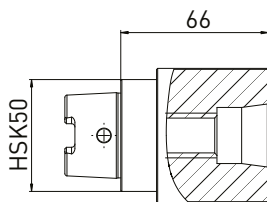
Item No.	Description
350130032	Adapter piece HSK50 on Haas/Walter taper



Item No.	Description
350130030	Adapter piece HSK50 on Strausak Fleximat



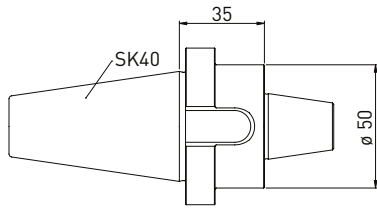
Item No.	Description
350130031	Adapter piece HSK50 on Strausak Promat



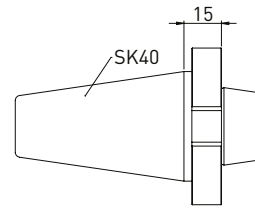
Item No.	Description
350130033	Adapter piece HSK50 on Saacke short taper

Adapters for dressing, presetting etc.

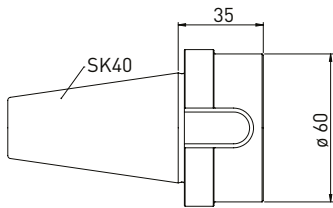
Fine balanced SK40 adapters for **tool grinding machines, dressing machines, presetting devices, balancing machines**



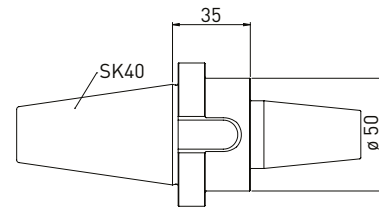
Item No.	Description
350130035	Adapter piece SK40 on ANCA taper ø30



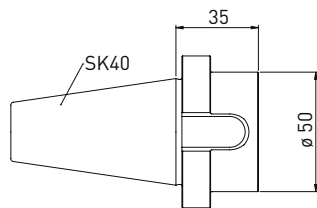
Item No.	Description
350130014	Adapter piece SK40 on Haas/Walter taper



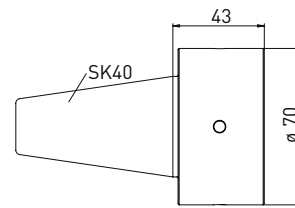
Item No.	Description
350130040	Adapter piece SK40 on Saacke short taper



Item No.	Description
350130043	Adapter piece SK40 on Strausak Fleximat



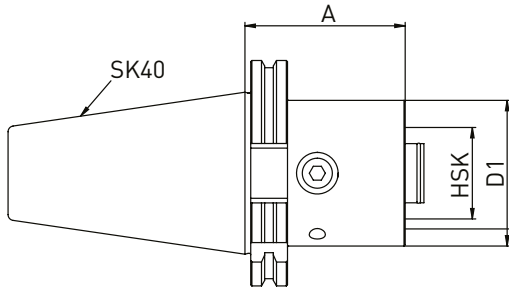
Item No.	Description
350130042	Adapter piece SK40 on Strausak Promat



Item No.	Description
350130039	Adapter piece SK40 on Rollomatic ø25

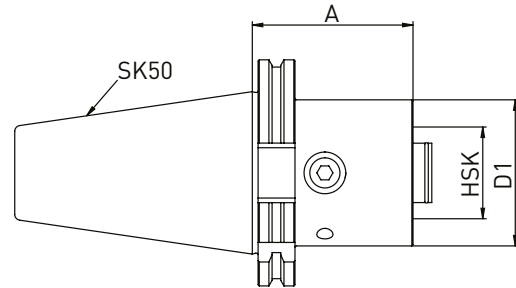
Adapters SK40 and SK50 on HSK tool adapters

Adapter piece SK40 on HSK



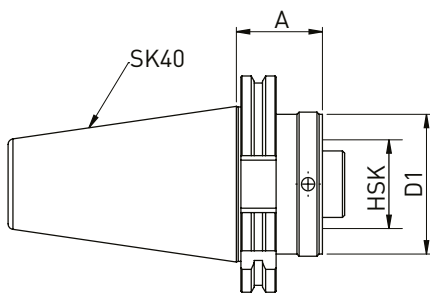
Item No.	A/C/E HSK shape	B/D/F HSK shape	A	D1
350130011	HSK32	HSK40	55	40
350130012	HSK40	HSK50	60	50
350130013	HSK50	HSK63	70	63

Adapter SK50 on HSK



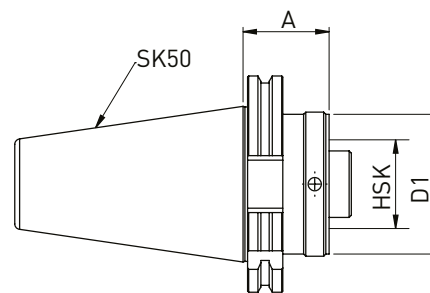
Item No.	A/C/E HSK shape	B/D/F HSK shape	A	D1
350130001	HSK 32	HSK 40	55	40
350130002	HSK40	HSK50	60	50
350130003	HSK50	HSK63	70	63
350130004	HSK63	HSK80	80	80

Adapter piece SK40 on HSK



Item No.	A/C HSK shape	A	D1
350130015	HSK32	40	32
350130016	HSK40	40	40
350130017	HSK50	40	50
350130018	HSK63	70	63

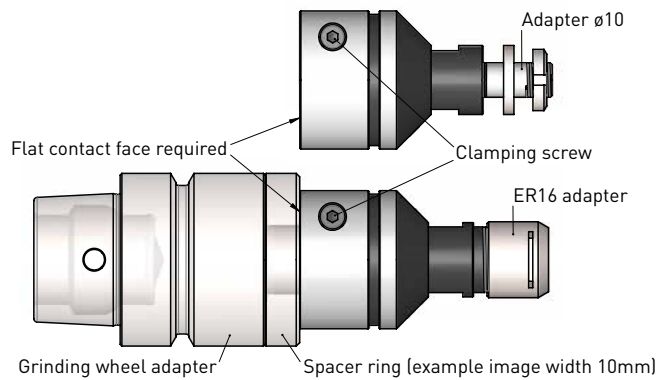
Adapter SK50 on HSK



Item No.	A/C HSK shape	A	D1
350130005	HSK 32	40	32
350130006	HSK40	40	40
350130007	HSK50	40	50
350130008	HSK63	40	63
350130009	HSK80	70	80
350130010	HSK100	100	100

Reduction adapters for grinding wheel adapters

Adapters for grinding wheel adapters from $\varnothing 20$ to $\varnothing 10$ // and $\varnothing 20$ to ER16 collet chuck



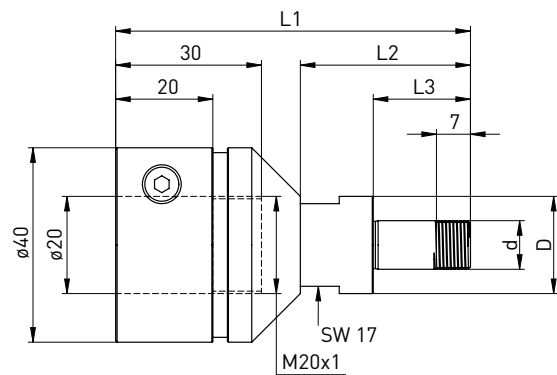
Assembly example

Twist adapter onto M20x1 screw and bring to rear to flat contact face.

If needed, lay spacers down first so that the adapter meets the flat contact face.

Subsequently, tighten using spanner flat and secure with clamping screw.

Adapter $\varnothing 20$ on $\varnothing 10$



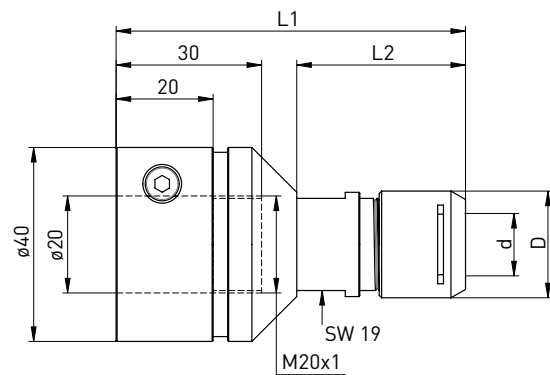
Delivered equipped:
Clamping nut (350020114), Spacer Rings 4pc. (350016004)

Item No.	D	d	L1	L2	L3
350130046	20	10	73	35	20

Accessories Adapter $\varnothing 20$ on $\varnothing 10$

Item No.	Description - \varnothing
350016004	Spacer Ring $\varnothing 20 \times \varnothing 10 \times 3$
350020114	clamping nut $\varnothing 18 \times 4 - M10 \times 0,75$
350040050	Hook wrench 16-20 mm

Adapter $\varnothing 20$ on ER16

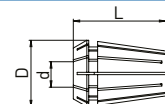


Delivered equipped:
Mini clamping nut Silent ER16 (350020116)

Item No.	D	d	L1	L2
350130047	22	ER16	73	62

Accessories Adapter $\varnothing 20$ on ER16

Item No.	Description
350125116	Mini clamping nut SILENT ER16
350126116	Clamping wrench for Mini clamping nut SILENT ER16



Item No. Description

350126** Collet DIN 6499 ER16 ** $\varnothing 1-10$ mm

**Please complete the order number with the two-digit number that defines the diameter! For example: For $\varnothing 1$ -> last digit 01 (305012601) for $\varnothing 10$ last digit -> 10 (305012610)

Our qualified partners **take care of you** where we can't be in person, providing optimal support and answers to your questions.



Local GDS partners offer the complete line of original GDS grinding wheel adaptors as well as clamping and balancing solutions for tool grinding.

From consulting to order processing, please contact your local GDS partners.

GDS - the precision makers

In North America contact:

Toolroom Solutions Inc.

8824 Old Block House Ln
Spotsylvania, VA 22551 USA

Tel: +1 (540) 940-5977

Email: info@toolroom.solutions

Web: www.toolroom.solutions



In North America contact:

Toolroom Solutions Inc.

8824 Old Block House Ln
Spotsylvania, VA 22551 USA

Tel: +1 (540) 940-5977

Email: info@toolroom.solutions

Web: www.toolroom.solutions

