

# Meraki MX60

## Cloud-Managed Multi-Service Router

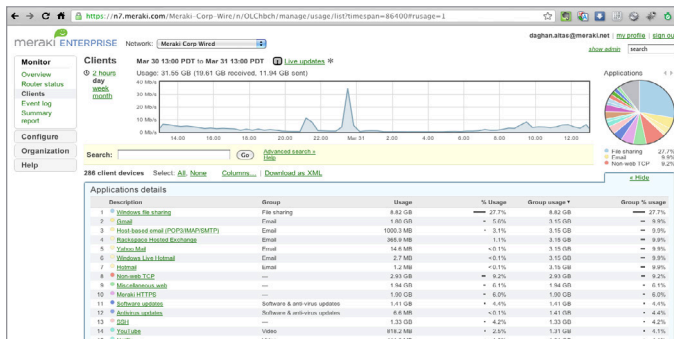


The Meraki MX60 is an integrated router, next-generation firewall, traffic shaper, and Internet gateway that is centrally managed over the web. The MX60 offers an extensive feature set, yet is incredibly easy to deploy and manage. Intuitive web-based administration eliminates specialized training and dedicated staff, and cloud-based centralized management provides seamless multi-site networks, automatic firmware upgrades, and much more.

### Cloud-Based Centralized Management

Manage from one branch to thousands, seamlessly over the web

With Meraki's cloud-based Dashboard, you can easily create network-wide policies, monitor all of your branches, receive e-mail alerts and troubleshoot using real-time diagnostic tools. The MX60's firmware is always up to date, with new features and enhancements delivered seamlessly from the cloud. Administrators never have to manually download software updates or security patches.



### Ease to Deploy

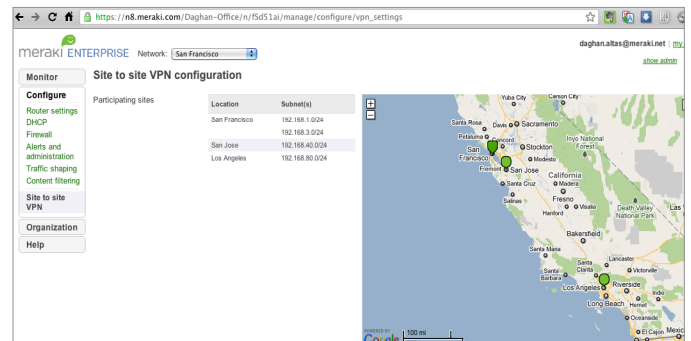
No need for command line tools and expensive certifications

The Meraki MX60 is designed for simplicity and ease-of-use. It is packed with state-of-the-art networking services including throughput monitoring with real-time alerts, routing, DHCP, and port forwarding, yet the intuitive web-based Dashboard makes it easy to deploy a branch network within 15 minutes, without learning command-line tools or spending a fortune on expensive certifications.

### Next-Generation Firewall and Traffic Shaper

Control applications and users, not just ports

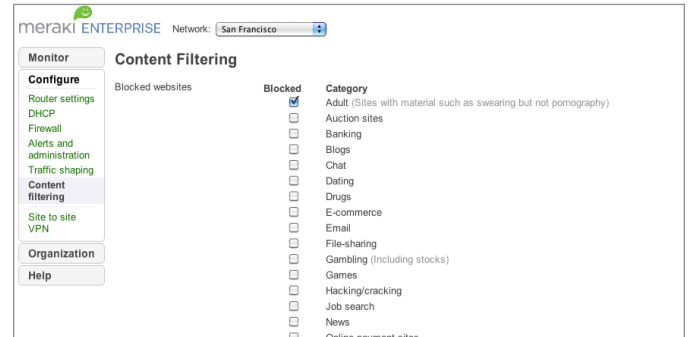
The MX60 features a powerful packet engine that performs deep packet inspection, stateful firewall services, 1:1 NAT, DMZ, and layer 7 traffic shaping and application firewall at very high speed. Additional features include network asset discovery, user identification and fingerprinting, user and device quarantine, application-aware traffic analysis, and per-application QoS.



### Advanced Web Security

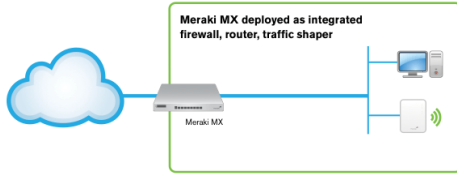
Extend next generation security to the branch

The Meraki MX60 is designed for secure, centrally managed multi-site networks. Block access to objectionable websites with powerful content filtering, and protect your network with anti-malware, anti-virus and anti-phishing capabilities. The Meraki MX60 also features a revolutionary site-to-site VPN technology that automatically establishes a secure IPSec connection between branches. With true zero-touch setup, the MX deploys easily in branches without on-site networking expertise.



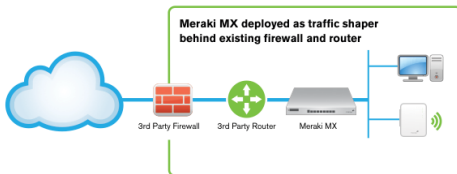
# Use Cases

## > Cloud-Managed Multi-Service Router



Build an easy to deploy and reliable network that doesn't require costly solutions like MPLS tunnels. Deploy the MX60 in mission-critical networks using link failover. Simplify access and visibility through cloud-managed site-to-site VPN. Secure remote networks using advanced security features like anti-virus filtering. Optimize network costs using traffic shaping.

## > Inline Traffic Shaper and Network Monitor



The MX60 is equally indispensable when deployed behind an existing firewall and router. Optimize network traffic with application-aware (layer 7) traffic shaping and firewall. Prioritize mission critical applications or VoIP traffic while setting limits on recreational traffic, e.g. peer-to-peer applications. Discover all client devices, identify users and monitor printers.

## > Ordering Information

The Meraki MX60 is available in both Enterprise Edition and Advanced Security Edition licenses:

- MX60-HW: Meraki MX60 Cloud Managed Router
- LIC-MX60-ENT-1YR: Meraki MX60, 1 year Enterprise License
- LIC-MX60-ENT-3YR: Meraki MX60, 3 year Enterprise License
- LIC-MX60-ENT-5YR: Meraki MX60, 5 year Enterprise License
- LIC-MX60-SEC-1YR: Meraki MX60, 1 year Adv. Security License
- LIC-MX60-SEC-3YR: Meraki MX60, 3 year Adv. Security License
- LIC-MX60-SEC-5YR: Meraki MX60, 5 year Adv. Security License

## > Warranty

- Lifetime hardware warranty included

Note:

- Meraki Enterprise or Advanced Security License required

# Specifications

## > Performance

- Stateful firewall throughput: 100 Mbps
- Advanced security throughput: 20 Mbps
- Maximum site-to-site VPN sessions: 20
- Maximum VLANs: 4
- Recommended for: Small Branches (10 to 20 Users)

## > Network Services

- Application-level (L7) traffic analysis and shaping
- Stateful firewall, 1:1 NAT, DMZ
- Multiple WAN IP, PPPoE, NAT and DHCP
- User and device quarantine

## > Monitoring and Management

- Web based management and configuration
- Throughput, connectivity monitoring and alerts
- Network asset discovery and user identification
- Built-in network-wide reporting, monitoring and alerts
- Centralized policy management
- Real-time diagnostic and troubleshooting over the web
- Automatic firmware upgrades and security patches
- Searchable network-wide event logs

## > Advanced Security Services\*

- Next generation application-level (L7) firewall
- Site-to-site (IPsec) VPN
- Content Filtering
- Anti-Virus\*\*
- Anti-Phishing\*\*

\*Meraki Advanced Security License required

\*\*Available August 2011

## > Interfaces

- WAN interfaces: 1x 1000 Base-T Ethernet
- LAN interfaces: 4x 1000 Base-T Ethernet
- USB interfaces: 1x USB 2.0

## > Power

- 12V / 1Amp power supply

## > Environment

- Operating temperature: 32°F to 104°F (0°C to 40°C)
- Humidity: 5 to 95% non-condensing

## > Physical Dimensions

- Dimensions: 11.8" x 10.5" x 3.3" (300 mm x 266 mm x 84 mm)
- Weight: 3.04 lbs (1.4 kg)