

List Price  
2019

# MASS NOTIFICATION



**WHELEN**<sup>®</sup>  
TRUSTED TO PERFORM<sup>™</sup>

ISO 9001 Registered QMS

Digital Voice  
Included on All  
WPS & IPS  
Models

- "Bill To" address.
- "Ship To" address (include contact name and telephone number for shipments by truck).
- Purchase order number.
- Method of shipping if different than Whelen's standard (Whelen will use either common carrier, UPS or Van Lines depending on product(s) being shipped).
- Freight if F.O.B. Chester, CT. Indicate if freight is to be prepaid (Whelen will invoice you for freight) or collect.
- Radio frequency, including PL tone or DPL Code (CTCSS or DCS) if applicable.
- Indicate if you are transmitting through a repeater.
- Indicate if radio controls are 8 digit or 10 digit.
- If RDVM is ordered, please supply messages with order (messages may be recorded voice messages or written messages).
- Name of end user.
- Is siren system to be compatible with another system? If so, what other system?
- Attach copy of price quotation (if provided by Whelen) with purchase order.
- Purchase order should be emailed or sent to: [iowsales@whelen.com](mailto:iowsales@whelen.com)

Whelen Engineering Company, Inc., Attn: Mass Notification Products Division, 51 Winthrop Road, Chester, CT 06412-1036

## WHY SHOULD YOU BUY A WHELEN MASS NOTIFICATION PRODUCT

How do you warn people of a tornado, flash flood or chemical release and get the proper response? A Mass Notification Product is intended to alert a community of such impending situations. As a municipal or county official, or as a distributor of Whelen Mass Notification Products, you have the difficult task of deciding what equipment is required to reliably and cost-effectively alert the community of these life-threatening dangers.

### MASS NOTIFICATION PRODUCT SOUND LEVEL

The two most important features of a Mass Notification Product warning system are (1) how loud does it need to be, and (2) to what distance will that sound carry so that it is still heard by the citizens over the normal community noise levels. Two important parameters of output are sound level (decibel) and frequency range (Hertz). Instruments used to measure sounds give us sound levels in decibels or dB(c). These sound levels are closely related to what we hear as loudness. A level of 110 dB(c) at 100 feet is louder than a level of 90 dB(c) at 100 feet. Instruments measure the frequency component of a sound in Hertz or Hz. A number of 400 Hz will have a low pitch sound of a bass tuba while a number of 1,500 Hz will have a high pitch sound of a flute.

The FEMA guidelines state several important facts about the sound generation from an outdoor emergency siren:\*

The frequency range should be between 300 and 1,000 Hz. This is the range the human ear detects best.

\* The sound level should be measured at 100 feet.

\* Sound levels will decrease at a rate of 10 dB(c) as the distance is doubled (Example: Producing a level of 125 dB(c) at 100 feet will have a level of 115 dB(c) at 200 feet and a level of 105 dB(c) at 400 feet.) Whelen states this to include background noise.

\* If, for example, a Mass Notification Product is claimed to be capable of producing a minimum level of 70 dB(c) at a distance of one mile, using the formula of subtracting 10 dB(c) as the distance is doubled, would require the product to have the capability of producing a minimum sound level of 127 dB(c) at 100 feet. Anything less than 127 dB(c) will NOT provide 70 dB(c) at a distance of one mile.

### SPEAKERS

Many manufacturers use standard consumer electronic components and speaker drivers that are used in our everyday household entertainment centers. The speakers used are designed for voice and limited music use with a frequency range of 1,000 to 3,000 Hz. A Whelen speaker is specifically designed as an emergency alerting speaker with its peak operating performance in the 300 to 1,000 Hz range (as defined in the FEMA guidelines). We are the only manufacturer utilizing a speaker driver specifically designed for outdoor warning. Unlike other manufacturers, Whelen's products come fully assembled, tested, and ready to install.

### ELECTRONIC COMPONENTS

Whelen Audio Power Amplifiers and Battery Power Systems are designed and rigorously tested to reliably operate in extreme temperature ranges and humid conditions. Whelen equipment has logged hundreds of hours in environmental test chambers in order to find potential problems that may cause the product to fail during the critical times of an emergency situation. Some manufacturers use the same audio amplifiers and UPS (Uninterruptible Power Supplies) systems that are used in your air conditioned living room or office area. These components are NOT designed for outdoor use in extreme temperature and environmental conditions such as lightning strikes.

### BASE STATION AND SIREN ACTIVATION CONTROLS

Whelen can offer a wide range of activation controls that can fit any budget. Reliable and dependable, these products are designed and manufactured in our own facilities in the U.S.A. Whelen's protocol is DTMF. This protocol is used today and has been used for years in communications. It is reliable and proven in communicating under adverse conditions. Our equipment will also operate in many other digital formats, including FSK.

### TESTING

Whelen Engineering has made a major commitment to Mass Notification Products with constant testing and product improvements. Whelen has extensive testing facilities with an anechoic chamber for acoustic testing, several environmental chambers for performing temperature and humidity testing, an RF chamber for testing radio emissions to improve radio communications and shock, as well as, vibration test equipment. Our UL Listed and tested systems meet the "Audible Signaling Device for Outdoor Use" specifications. Other manufacturers do not have this type of listing but may have UL Listed components for use as entertainment equipment or for office use. These types of listings are not for products that are to be used as emergency warning systems designed to alert your community of severe and/or life threatening weather. No Mass Notification Products manufacturer in the world submits its products to more tests than Whelen. That is why Whelen can state that **"We make the best Mass Notification Products in the world!"**

### EXPERIENCE

Whelen Engineering has over 30 years of experience in the design and manufacturing of outdoor electronic Mass Notification Products and Whelen has built thousands of products used to alert communities, counties and entire nations around the world of potential danger. Whelen has a dedicated commitment to produce a properly engineered, reliable and cost-effective Mass Notification Products that no community can afford to be without during life threatening conditions. Whelen has the largest Mass Notification production assembly area in the market place. In 30 years, Whelen has never been beaten in side-by-side competition for tone clarity or tone power output. Designing and manufacturing visual and audible indoor and outdoor Mass Notification Products is not a sideline at Whelen, it is the only thing we do, and we do it better than anyone else.



# MASS NOTIFICATION PRODUCTS

TABLE OF CONTENTS	PAGE
Purchase Order Check List & Why should you buy a Whelen Mass Notification Product	2
Table of Contents	3
WPS2900A and WPS2900S Series	4-8
WPS4000A and WPS4000S Series	9-10
Omni-Alert™ Siren Series	11-12
Vortex™ Series	13-14
Hornet™ Series	15-16
Firehouse Series	17-18
In-Plant System (IPS) Series	19-21
Base Station Controls	21
Test Sets and Keyboard Field Test Equipment	21
Alert Monitors	22
Replacement Parts	23-29
User Direct Warranty	30
Mass Notification Policies	31

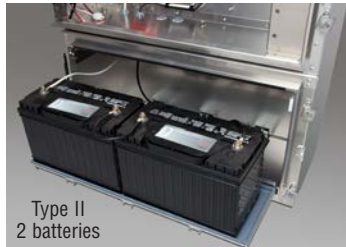


AUTHORIZED MANAGING SALES REPRESENTATIVE OFFICES  
 Conveniently located throughout the U.S.A. Call 800-63SIREN or visit our website for the office nearest you.

CORPORATE OFFICES AND MANUFACTURING  
 51 Winthrop Road, Chester, CT 06412-1036  
 phone: 800-63SIREN or 860-526-9504  
[www.whelen.com](http://www.whelen.com)  
[iowsales@whelen.com](mailto:iowsales@whelen.com)

ALL PRICES: F.O.B. Chester, Connecticut. TERMS: Net 30 days for qualified open accounts. Past due balances subject to interest and carrying charges. Possession of this Price List does not constitute the right to purchase directly from Whelen Engineering Company, Inc. and Whelen Engineering Company, Inc. reserves the right to upgrade its products and revise product pricing without prior notification. Whelen Engineering Company, Inc. is not responsible for typographical errors.

**WPS2900A and WPS2900S Series**



Type II  
2 batteries



Type III  
4 batteries

Cabinets with slide out battery trays



Aluminum or 304  
Stainless Steel  
Type III Cabinet



Aluminum or 304  
Stainless Steel  
Type II Cabinet



WPS2905  
with Pole Top Bracket



WPS2910 WPS2909 WPS2908 WPS2907 WPS2906 WPS2905 WPS2904 WPS2903 WPS2902 WPS2901

**WPS2900A Series - Omni-Directional Sirens**

**WPS2901A thru WPS2905A Series** Omni-Directional High Power Voice and Sirens. WPS2901A has (1) Power Amplifier, WPS2902A has (2) Power Amplifiers, WPS2903A has (3) Power Amplifiers, WPS2904A has (4) Power Amplifiers, WPS2905A has (5) Power Amplifiers. These models all include Speaker Array, Speaker Drivers, 50' of Speaker Cable and Pole Top Mounting Bracket. **Aluminum Type II Control Cabinet**, ESC2030 Siren Controller, 10A 110/120 VAC 50/60 Hz Battery Charger and RDVM1G Digital Voice Option Board (Supports up to 28 Messages for an Additional Charge), No Additional Charge if Using Existing Customer Messages on File (Customer to Verify and Supply Message List to be Used) **(Batteries Not Included)**.

**WPS2906A thru WPS2910A Series** Omni-Directional High Power Voice and Sirens. WPS2906A has (6) Power Amplifiers, WPS2907A has (7) Power Amplifiers, WPS2908A has (8) Power Amplifiers, WPS2909A has (9) Power Amplifiers, WPS2910A has (10) Power Amplifiers. These models all include Speaker Array, Speaker Drivers, 50' of Speaker Cable and Pole Top Mounting Bracket. **Aluminum Type III Control Cabinet**, ESC2030 Siren Controller, 10A 110/120 VAC 50/60 Hz Battery Charger and RDVM1G Digital Voice Option Board (Supports up to 28 Messages for an Additional Charge), No Additional Charge if Using Existing Customer Messages on File (Customer to Verify and Supply Message List to be Used) **(Batteries Not Included)**.

Models	Reference Part Number	Description	2019 List Price
WPS2901A	01-1486937-01	One Cell Omni-Directional High Power Voice and Siren	\$ 8,295.00
WPS2902A	01-1486937-02	Two Cell Omni-Directional High Power Voice and Siren	\$ 10,595.00
WPS2903A	01-1486937-03	Three Cell Omni-Directional High Power Voice and Siren	\$ 12,895.00
WPS2904A	01-1486937-04	Four Cell Omni-Directional High Power Voice and Siren	\$ 15,195.00
WPS2905A	01-1486937-05	Five Cell Omni-Directional High Power Voice and Siren	\$ 17,495.00
WPS2906A	01-1486937-06	Six Cell Omni-Directional High Power Voice and Siren	\$ 21,395.00
WPS2907A	01-1486937-07	Seven Cell Omni-Directional High Power Voice and Siren	\$ 23,695.00
WPS2908A	01-1486937-08	Eight Cell Omni-Directional High Power Voice and Siren	\$ 26,495.00
WPS2909A	01-1486937-09	Nine Cell Omni-Directional High Power Voice and Siren	\$ 28,795.00
WPS2910A	01-1486937-10	Ten Cell Omni-Directional High Power Voice and Siren	\$ 30,995.00

## WPS2900S Series - Omni-Directional Sirens

**WPS2901S thru WPS2905S Series** Omni-Directional High Power Voice and Sirens, WPS2901S has (1) Power Amplifier, WPS2902S has (2) Power Amplifiers, WPS2903S has (3) Power Amplifiers, WPS2904S has (4) Power Amplifiers, WPS2905S has (5) Power Amplifiers. These models all include Speaker Array, Speaker Drivers, 50' of Speaker Cable and Pole Top Mounting Bracket. **304 Stainless Steel Type II Control Cabinet** includes (1) Power Amplifier, ESC2030 Siren Controller, 10A 110/120 VAC Battery Charger and RDVM1G Digital Voice Option Board (Supports up to 28 Messages for an Additional Charge), No Additional Charge if Using Existing Customer Messages on File (Customer to Verify and Supply Message List to be Used) **(Batteries Not Included)**.

**WPS2906S thru WPS2910S Series** Omni-Directional High Power Voice and Sirens, WPS2906S has (6) Power Amplifiers, WPS2907S has (7) Power Amplifiers, WPS2908S has (8) Power Amplifiers, WPS2909S has (9) Power Amplifiers, WPS2910S has (10) Power Amplifiers. These models all include Speaker Array, Speaker Drivers, 50' of Speaker Cable and Pole Top Mounting Bracket. **304 Stainless Steel Type III Control Cabinet** includes ESC2030 Siren Controller, 10A 110/120 VAC Battery Charger and RDVM1G Digital Voice Option Board (Supports up to 28 Messages for an Additional Charge), No Additional Charge if Using Existing Customer Messages on File (Customer to Verify and Supply Message List to be Used) **(Batteries Not Included)**.

Models	Reference Part Number	Description	2019 List Price
WPS2901S	01-1486942-01	One Cell Omni-Directional High Power Voice and Siren	\$ 9,615.00
WPS2902S	01-1486942-02	Two Cell Omni-Directional High Power Voice and Siren	\$ 11,795.00
WPS2903S	01-1486942-03	Three Cell Omni-Directional High Power Voice and Siren	\$ 13,995.00
WPS2904S	01-1486942-04	Four Cell Omni-Directional High Power Voice and Siren	\$ 16,145.00
WPS2905S	01-1486942-05	Five Cell Omni-Directional High Power Voice and Siren	\$ 18,295.00
WPS2906S	01-1486942-06	Six Cell Omni-Directional High Power Voice and Siren	\$ 22,295.00
WPS2907S	01-1486942-07	Seven Cell Omni-Directional High Power Voice and Siren	\$ 24,495.00
WPS2908S	01-1486942-08	Eight Cell Omni-Directional High Power Voice and Siren	\$ 26,895.00
WPS2909S	01-1486942-09	Nine Cell Omni-Directional High Power Voice and Siren	\$ 29,095.00
WPS2910S	01-1486942-10	Ten Cell Omni-Directional High Power Voice and Siren	\$ 31,295.00

## Activation Controls

Models	Reference Part Number	Description	2019 List Price
<b>WPS2900 Series One-Way Controls</b>			
AUXIN	01-1469243-00	Limited Function Auxiliary Board for Contact Closure Activation (Control Inputs for All Siren Tone Commands, Cancel, Si-Test® and 4 Digital Voice Messages (WPS and IPS Only))	\$ 185.00
D2030LL	01-1469056-02	One-Way Land Line Interface, 600 Ohm Audio Connection	\$ 385.00
D2030NV	01-1418320-03	One-Way 10 Digit DTMF Narrow Band VHF 138-174 MHz Radio Option (Supply Siren RX Frequency with Order)	\$ 1,580.00
D2030NU1	01-1418320-00	One-Way 10 Digit DTMF Narrow Band UHF 400.6-416.5 MHz Radio Option (Supply Siren RX Frequency with Order)	\$ 1,580.00
D2030NU2	01-1418320-01	One-Way 10 Digit DTMF Narrow Band UHF 411-429 MHz Radio Option (Supply Siren RX Frequency with Order)	\$ 1,580.00
D2030NU3	01-1418320-02	One-Way 10 Digit DTMF Narrow Band UHF 450-470 MHz Radio Option (Supply Siren RX Frequency with Order)	\$ 1,580.00

## WPS2900 Series Two-Tone Sequential

WPSTTU	01-1469242-00	Two-Tone Decoder Option, includes (1) Decoder (Customer to Complete and Return Two-Tone Work Sheet with Order)	\$ 395.00
2TTM	75-0317299-00	Additional Two-Tone Decoder	\$ 280.00

## WPS2900 Series Activation Controls (Cont'd)

Models	Reference Part Number	Description	2019 List Price
<b>WPS2900 Series Two-Way Controls</b>			
AUXCS	01-1467765-00	Auxiliary Control and Status Option (Control Inputs for All Siren Tone Commands, Si-Test® and 16 Digital Voice Messages (WPS and IPS Only), Relay Contact Status Outputs for Battery Charger AC Input Present, System Battery Voltage Above 18 VDC, Speaker Driver/Amplifier Partial, Speaker Driver/Amplifier Full, Cabinet Intrusion)	\$ 465.00
C2030LL	01-1469056-00	Two-Way Land Line Interface, 600 Ohm Audio Connection	\$ 485.00
C2030NV	01-1418319-03	Two-Way 10 Digit DTMF Narrow Band VHF 144-174 MHz Radio Option, includes Radio with Interface, Radio to Antenna Lightning Arrestor Cable, Antenna Lightning Arrestor, 35' of RG58 Antenna Cable and 3db Gain Omni-Directional 144-174 MHz Antenna (Supply Siren RX and TX Frequencies with Order)	\$ 1,730.00
C2030NV2	01-1418319-04	Two-Way 10 Digit DTMF Narrow Band VHF 138-174 MHz Radio Option, includes Radio with Interface, Radio to Antenna Lightning Arrestor Cable, Antenna Lightning Arrestor, 35' of RG58 Antenna Cable and 3db Gain Omni-Directional 132-174 MHz Antenna (Supply Siren RX and TX Frequencies with Order)	\$ 1,730.00
C2030NU1	01-1418319-00	Two-Way 10 Digit DTMF Narrow Band UHF 400.6-416.5 MHz Radio Option, includes Radio with Interface, Radio to Antenna Lightning Arrestor Cable, Antenna Lightning Arrestor, 35' of RG58 Antenna Cable and 5db Gain Omni-Directional 406-430 MHz Antenna (Supply Siren RX and TX Frequencies with Order)	\$ 1,730.00
C2030NU2	01-1418319-01	Two-Way 10 Digit DTMF Narrow Band UHF 411-429 MHz Radio Option, includes Radio with Interface, Radio to Antenna Lightning Arrestor Cable, Antenna Lightning Arrestor, 35' of RG58 Antenna Cable and 5db Gain Omni-Directional 406-430 MHz Antenna (Supply Siren RX and TX Frequencies with Order)	\$ 1,730.00
C2030NU3	01-1418319-02	Two-Way 10 Digit DTMF Narrow Band UHF 450-470 MHz Radio Option, includes Radio with Interface, Radio to Antenna Lightning Arrestor Cable, Antenna Lightning Arrestor, 35' of RG58 Antenna Cable and 5db Gain Omni-Directional 450-470 MHz Antenna (Supply Siren RX and TX Frequencies with Order)	\$ 1,730.00
<b>WPS2900 Series Options</b>			
WPS220AC	02-0461725-00	Configure WPS Siren for 220/240 VAC 50/60 Hz	N/C
INTRUWPS	01-0342792-02	WPS Intrusion Alarm	\$ 200.00
INTRU	01-0342792-00	Intrusion Alarm for Type 1 Cabinet and FPU Only	\$ 150.00
STATUS	01-1463315-00	Cabinet Window LED Status Indicator	\$ 325.00
PGINT	01-1485907-00	Paging Interface Option Type II/III Cabinets (Provides a 600 Ohm 1 Vrms Audio Interface for Handing Off Siren Audio to a Paging Amplifier or Voice Fire Alarm)	\$ 280.00
MSGPROG	77-2100069A-1	Custom Message Programming Each	\$ 175.00
MSGPROGL	01-1463561-00	Library Message Charge Each	\$25.00 NET
WPSNCMIC	01-1446306-00	Noise Canceling Microphone with ESC2030 to Front Panel Harness	\$ 85.00
WPSBATT	01-1416825-01	One Pair of Whelen Approved Batteries for the WPS Series Siren	\$ 835.00
DELPTBWP	01-1416826-00	Pole Top Bracket DEDUCT	\$ (200.00)
RTM1	02-0784909-00	WPS2901-WPS2907 Roof Top Speaker Mount 14' x 25" (4.27m x .61m)	\$ 6,160.00
RTM2	02-0784909-01	WPS2901-WPS2907 Roof Top Speaker Mount 14' x 37" (4.27m x .91m)	\$ 6,160.00
RTM3	02-0784909-02	WPS2901-WPS2907 Roof Top Speaker Mount 14' x 49" (4.27m x 1.22m), (1220 lbs./ 553.4 kg)	\$ 6,160.00

## WPS2900 Series Options (Cont'd)

Models	Reference Part Number	Description	2019 List Price
<b>WPS2900 Series Longer Speaker Cable Options</b>			
<b>1-5 CELL Speaker Cable Options</b>			
5PAIR60	02-0484227-01	Option 60' WPS2900 1-5 Cell Speaker Cable With Connectors (Removes 50' Cable and Adds 60' 5 Pair Cable)	\$ 80.00
5PAIR65	02-0484227-07	Option 65' WPS2900 1-5 Cell Speaker Cable With Connectors (Removes 50' Cable and Adds 65' 5 Pair Cable)	\$ 120.00
5PAIR75	02-0484227-02	Option 75' WPS2900 1-5 Cell Speaker Cable With Connectors (Removes 50' Cable and Adds 75' 5 Pair Cable)	\$ 200.00
5PAIR100	02-0484227-03	Option 100' WPS2900 1-5 Cell Speaker Cable With Connectors (Removes 50' Cable and Adds 100' 5 Pair Cable)	\$ 400.00
<b>6-10 CELL Speaker Cable Options</b>			
10PAR60	02-0484227-04	Option 60' WPS2900 6-10 Cell Base Speaker Cable With Connectors (Removes 50' Cable and Adds 60' 10 Pair Base Cable)	\$ 140.00
10PAR65	02-0484227-08	Option 65' WPS2900 6-10 Cell Base Speaker Cable With Connectors (Removes 50' Cable and Adds 65' 10 Pair Base Cable)	\$ 225.00
10PAR75	02-0484227-05	Option 75' WPS2900 6-10 Cell Base Speaker Cable With Connectors (Removes 50' Cable and Adds 75' 10 Pair Base Cable)	\$ 380.00
10PAR100	02-0484227-06	Option 100' WPS2900 6-10 Cell Base Speaker Cable With Connectors (Removes 50' Cable and Adds 100' 10 Pair Base Cable)	\$ 740.00
<b>WPS2900 Series Solar Options</b>			
SBC280	01-1469500-00	WPS 80 Watt Solar Option (Includes (2) 80 Watt Panels, Panel Pole Mounting Bracket, Solar Regulator and 45' Long Cable), Replaces Standard AC Charger with Solar Regulator	\$ 3,000.00
SBC280AC	01-1469500-03	WPS AC and 80 Watt Solar Option (Includes (2) 80 Watt Panels, Panel Pole Mounting Bracket, AC Charger/Solar Regulator Combo and 45' Long Cable) Replaces Standard AC Charger with AC Charger/Solar Regulator Combo	\$ 3,830.00
SBC480	01-1469500-01	WPS 160 Watt Solar Option (Includes (4) 80 Watt Panels, (2) Panel Pole Mounting Brackets, Dual Solar Regulator and (2) 45' Long Cables), Replaces Standard AC Charger with Dual Solar Regulator	\$ 6,500.00
<b>WPS2900 Series Lighting Accessories Options</b>			
VALERTA	01-0686663-A0	24 VDC <b>Amber</b> Light Cluster for the WPS2900 Series Sirens (Includes LEDCTRL) (Type II/III)	\$ 1,600.00
VALERTC	01-0686663-C0	24 VDC <b>Clear</b> Light Cluster for the WPS2900 Series Sirens (Includes LEDCTRL) (Type II/III)	\$ 1,600.00
VALERTR	01-0686663-R0	24 VDC <b>Red</b> Light Cluster for the WPS2900 Series Sirens (Includes LEDCTRL) (Type II/III)	\$ 1,600.00
VALERTRC	01-0686663-RC	24 VDC <b>Red/White</b> Light Cluster for the WPS2900 Series Sirens (Includes LEDCTRL) (Type II/III)	\$ 1,600.00
<b>VisuAlert™ Longer Cable Options</b>			
N/A	02-0486663-01	Option 69' VisuAlert Cable (Removes Standard 59' Cable, Adds 69' Cable), + 10'	\$ 35.00
N/A	02-0486663-02	Option 84' VisuAlert Cable (Removes Standard 59' Cable, Adds 84' Cable), + 25'	\$ 80.00
N/A	02-0486663-03	Option 109' VisuAlert Cable (Removes Standard 59' Cable, Adds 109' Cable), + 50'	\$ 155.00

**WPS2900 Series Options (Cont'd)**

Models	Part Number	Description	2019 List Price
<b>Beacon Options</b>			
LCWPS	01-0361621-03	Includes LEDCTRL LED Control Board, 50' Cable and L31 Speaker Top Mounting Bracket (Type II/III Cabinet Only) (Requires L31H*F4)	\$ 600.00
LEDCTRL	01-1469331-01	<b>LED Controller Board Only</b> , includes LED Control Board, Harness to ESC2030, Motherboard and Board Mounting Hardware for Type II/III Siren Cabinets Only	\$ 490.00
L31HAF4	01-06859532AF	L31HAF4 - 24 VDC <b>Amber</b> Super LED Beacon (Requires LCWPS or LEDCTRL)	\$ 630.00
L31HBF4	01-06859532BF	L31HBF4 - 24 VDC <b>Blue</b> Super LED Beacon (Requires LCWPS or LEDCTRL)	\$ 630.00
L31HCF4	01-068595323F	L31HCF4 - 24 VDC <b>Clear</b> Super LED Beacon (Requires LCWPS or LEDCTRL)	\$ 630.00
L31HRF4	01-06859532RF	L31HRF4 - 24 VDC <b>Red</b> Super LED Beacon (Requires LCWPS or LEDCTRL)	\$ 630.00
L360PMKT	01-0485953-00	L31 Series 1" Pipe Mounting Kit	\$ 39.00
<b>LCWPS Longer Cable Options</b>			
N/A	02-0461621-00	02-0461621-01 - Option 60' LCWPS Cable (Removes the Standard 50' Cable and Adds 60' Cable (69' Total Length 60' Usable)	\$ 35.00
N/A	02-0461621-01	02-0461621-01 - Option 75' LCWPS Cable (Removes the Standard 50' Cable and Adds 75' Cable (84' Total Length 75' Usable)	\$ 80.00
N/A	02-0461621-02	02-0461621-01 - Option 100' LCWPS Cable (Removes the Standard 50' Cable and Adds 100' Cable (109' Total Length 100' Usable)	\$ 155.00



The most effective way for warning the public is to issue a tone and follow it with clear, intelligible voice instructions!

Whelen's three step approach,  
**A.I.D.™ ...ALERT, INFORM & DIRECT**  
will eliminate confusion, restore order, and *most importantly, save lives.*

**WPS2900 Series  
Omni-Directional Sirens**



## WPS4000 Series Rotating Sirens



The **WPS4003A, WPS4004A, WPS4003S, and WPS4004S Series Directional/Oscillating High Power Voice and Sirens** listed below include Fully Assembled Speaker(s) and Rotor Assembly, 400 Watt Speaker Drivers, 50' of Speaker and Rotor Cable and Pole Top Mounting Bracket. Fully Assembled Control Cabinet Including Power Amplifiers, ESC2030 Siren Controller, 10A 110/120 VAC Battery Charger, Rotor Control Module and RDVM1G Digital Voice Option Board (Supports up to 28 Messages for an Additional Charge), No Additional Charge if Using Existing Customer Messages on File (Customer to Verify and Supply Message List to be Used) **(Batteries Not Included)**

Models	Part Number	Description	2019 List Price
WPS4003A	01-1486943-03	Same description as above with (3) 400 Watt Speaker Drivers and Fully Assembled Aluminum Type II Control Cabinet with (3) Power Amplifiers	\$ 20,695.00
WPS4004A	01-1486943-04	Same description as above with (4) 400 Watt Speaker Drivers and Fully Assembled Aluminum Type II Control Cabinet with (4) Power Amplifiers	\$ 22,195.00
WPS4003S	01-1486944-03	Same description as above with (3) 400 Watt Speaker Drivers. Fully Assembled 304 Stainless Steel Type II Control Cabinet with (3) Power Amplifiers	\$ 21,795.00
WPS4004S	01-1486944-04	Same as description above with (4) 400 Watt Speaker Drivers. Fully Assembled 304 Stainless Steel Type II Control Cabinet includes (4) Power Amplifiers	\$ 23,895.00

## WPS4000 Series Activation Controls

### WPS4000 Series One-Way Controls

AUXIN	01-1469243-00	Limited Function Auxiliary Board for Contact Closure Activation (Control Inputs for All Siren Tone Commands, Cancel, Si-Test® and 4 Digital Voice Messages (WPS and IPS Only)	\$ 185.00
D2030LL	01-1469056-02	One-Way Land Line Interface, 600 Ohm Audio Connection	\$ 385.00
D2030NV	01-1418320-03	One-Way 10 Digit DTMF Narrow Band VHF 138-174 MHz Radio Option (Supply Siren RX Frequency with Order)	\$ 1,580.00
D2030NU1	01-1418320-00	One-Way 10 Digit DTMF Narrow Band UHF 400.6-416.5 MHz Radio Option (Supply Siren RX Frequency with Order)	\$ 1,580.00
D2030NU2	01-1418320-01	One-Way 10 Digit DTMF Narrow Band UHF 411-429 MHz Radio Option (Supply Siren RX Frequency with Order)	\$ 1,580.00
D2030NU3	01-1418320-02	One-Way 10 Digit DTMF Narrow Band UHF 450-470 MHz Radio Option (Supply Siren RX Frequency with Order)	\$ 1,580.00

## WPS4000 Series Activation Controls (Cont'd)

Models	Part Number	Description	2019 List Price
<b>WPS4000 Series Two-Tone Sequential</b>			
WPSTTU	01-1469242-00	Two-Tone Decoder Option, includes (1) Decoder (Customer to Complete and Return Two-Tone Work Sheet with Order)	\$ 395.00
2TTM	75-0317299-00	Additional Two-Tone Decoder	\$ 280.00
<b>WPS4000 Series Two-Way Controls</b>			
AUXCS	01-1467765-00	Auxiliary Control and Status Option (Control Inputs for All Siren Tone Commands, Si-Test® and 16 Digital Voice Messages (WPS & IPS Only), Relay Contact Status Outputs for Battery Charger AC Input Present, System Battery Voltage above 18 VDC, Speaker Driver/Amplifier Partial, Speaker Driver/Amplifier Full, Cabinet Intrusion)	\$ 465.00
C2030LL	01-1469056-00	Two-Way Land Line Interface, 600 Ohm Audio Connection	\$ 485.00
C2030NV	01-1418319-03	Two-Way 10 Digit DTMF Narrow Band VHF 144-174 MHz Radio Option, includes Radio with Interface, Radio to Antenna Lightning Arrestor Cable, Antenna Lightning Arrestor, 35' of RG58 Antenna Cable and 3db Gain Omni-Directional 144-174 MHz Antenna (Supply Siren RX and TX Frequencies with Order)	\$ 1,730.00
C2030NV2	01-1418319-04	Two-Way 10 Digit DTMF Narrow Band VHF 138-174 MHz Radio Option, includes Radio with Interface, Radio to Antenna Lightning Arrestor Cable, Antenna Lightning Arrestor, 35' of RG58 Antenna Cable and 3db Gain Omni-Directional 132-174 MHz Antenna (Supply Siren RX and TX Frequencies with Order)	\$ 1,730.00
C2030NU1	01-1418319-00	Two-Way 10 Digit DTMF Narrow Band UHF 400.6-416.5 MHz Radio Option, includes Radio with Interface, Radio to Antenna Lightning Arrestor Cable, Antenna Lightning Arrestor, 35' of RG58 Antenna Cable and 5db Gain Omni-Directional 406-430 MHz Antenna (Supply Siren RX and TX Frequencies with Order)	\$ 1,730.00
C2030NU2	01-1418319-01	Two-Way 10 Digit DTMF Narrow Band UHF 411-429 MHz Radio Option, includes Radio with Interface, Radio to Antenna Lightning Arrestor Cable, Antenna Lightning Arrestor, 35' of RG58 Antenna Cable and 5db Gain Omni-Directional 406-430 MHz Antenna (Supply Siren RX and TX Frequencies with Order)	\$ 1,730.00
C2030NU3	01-1418319-02	Two-Way 10 Digit DTMF Narrow Band UHF 450-470 MHz Radio Option, includes Radio with Interface, Radio to Antenna Lightning Arrestor Cable, Antenna Lightning Arrestor, 35' of RG58 Antenna Cable and 5db Gain Omni-Directional 450-470 MHz Antenna (Supply Siren RX and TX Frequencies with Order)	\$ 1,730.00
<b>WPS4000 Series Two-Way Controls Options</b>			
WPS220AC	02-0461725-00	Configure WPS Siren for 220/240 VAC 50/60 Hz	N/C
INTRUWPS	01-0342792-02	WPS Intrusion Alarm	\$ 200.00
INTRU	01-0342792-00	Intrusion Alarm for Type 1 Cabinet and FPU Only	\$ 150.00
STATUS	01-1463315-00	Cabinet Window LED Status Indicator	\$ 325.00
PGINT	01-1485907-00	Paging Interface Option Type II/III Cabinets (Provides a 600 Ohm 1 Vrms Audio Interface for Handing Off Siren Audio to a Paging Amplifier or Voice Fire Alarm)	\$ 280.00
MSGPROG	77-2100069A-1	Custom Message Programming Each	\$ 175.00
MSGPROGL	01-1463561-00	Library Message Charge Each	\$ 25.00 NET
WPSNCMIC	01-1446306-00	Noise Canceling Microphone with ESC2030 to Front Panel Harness	\$ 85.00
WPSBATT	01-1416825-01	One Pair of Whelen Approved Batteries for the WPS Series Siren	\$ 835.00
DELPTBWP	01-1416826-00	Pole Top Bracket DEDUCT	\$ (200.00)

**WPS4000 Series Activation Controls (Cont'd)**

Models	Part Number	Description	2019 List Price
<b>Longer Speaker/Rotor Cable Options</b>			
CABLE60	02-0481247-03	Option 60' WPS4003/4004 Speaker and Rotor Cable With Connectors (Removes 50' Cables and Adds 60')	\$ 175.00
CABLE70	02-0481247-01	Option 70' WPS4003/4004 Speaker and Rotor Cable With Connectors (Removes 50' Cables and Adds 70')	\$ 350.00
CABLE75	02-0481247-02	Option 75' WPS4003/4004 Speaker and Rotor Cable With Connectors (Removes 50' Cables and Adds 75')	\$ 420.00
<b>WPS4000 Series Solar Option</b>			
SBC280	01-1469500-00	WPS 80 Watt Solar Option (Includes (2) 80 Watt Panels, Panel Pole Mounting Bracket, Solar Regulator and 45' Long Cable) Replaces Standard AC Charger with Solar Regulator	\$ 3,000.00
SBC280AC	01-1469500-03	WPS AC and 80 Watt Solar Option (Includes (2) 80 Watt Panels, Panel Pole Mounting Bracket, AC Charger/Solar Regulator Combo and 45' Long Cable) Replaces Standard AC Charger with AC Charger/Solar Regulator Combo	\$ 3,830.00
SBC480	01-1469500-01	WPS 160 Watt Solar Option (Includes (4) 80 Watt Panels, (2) Panel Pole Mounting Brackets, Dual Solar Regulator and (2) 45' Long Cables) Replaces Standard AC Charger with Dual Solar Regulator	\$ 6,500.00



All Whelen Mass Notification products have quality construction, are easy to service in the field, and are backed by years of technical experience in voice and sound warning.



## OMNI-ALERT™ Siren Series



Omni-Alert OA1 through OA4 models with High Power Tone Only Siren, includes Speaker Array, Speaker Drivers, 50' of Speaker Cable and Pole Top Mounting Bracket. Aluminum Type I Control Cabinets includes Tone Only Power Amplifier(s), ESC2030 Siren Controller and 5A 110/120 VAC Battery Charger (**Batteries Not Included**)

Models	Part Number	Description	2019 List Price
OA1	01-1486010-01	Same description as above with Omni-Alert <b>400 Watt</b> High Power Tone only Siren with Aluminum Type I Control Cabinet with <b>(1) Tone</b> only Power Amplifier	<b>\$ 6,295.00</b>
OA2	01-1486010-02	Same description as above with Omni-Alert <b>800 Watt</b> High Power Tone Only Siren with Aluminum Type I Control Cabinet includes <b>(2) Tone</b> Only Power Amplifiers	<b>\$ 8,395.00</b>
OA3	01-1486010-03	Same description as above with Omni-Alert <b>1200 Watt</b> High Power Tone Only Siren with Aluminum Type I Control Cabinet includes <b>(3) Tone</b> Only Power Amplifiers	<b>\$ 10,495.00</b>
OA4	01-1486010-04	Same description as above with Omni-Alert <b>1600 Watt</b> High Power Tone Only Siren with Aluminum Type I Control Cabinet includes <b>(4) Tone</b> Only Power Amplifiers	<b>\$ 12,595.00</b>

## OMNI-ALERT Series Activation Controls

### OMNI-ALERT Series One-Way Controls

AUXIN	01-1469243-00	Limited Function Auxiliary Board for Contact Closure Activation, Control Inputs for All Siren Tone Commands, Cancel, Si-Test <sup>®</sup> and 4 Digital Voice Messages (WPS and IPS Only)	<b>\$ 185.00</b>
D2030LL	01-1469056-02	One-Way Land Line Interface, 600 Ohm Audio Connection	<b>\$ 385.00</b>
D2030NV	01-1418320-03	One-Way 10 Digit DTMF Narrow Band VHF 138-174 MHz Radio Option (Supply Siren RX Frequency with Order)	<b>\$ 1,580.00</b>
D2030NU1	01-1418320-00	One-Way 10 Digit DTMF Narrow Band UHF 400.6-416.5 MHz Radio Option (Supply Siren RX Frequency with Order)	<b>\$ 1,580.00</b>
D2030NU2	01-1418320-01	One-Way 10 Digit DTMF Narrow Band UHF 411-429 MHz Radio Option (Supply Siren RX Frequency with Order)	<b>\$ 1,580.00</b>
D2030NU3	01-1418320-02	One-Way 10 Digit DTMF Narrow Band UHF 450-470 MHz Radio Option (Supply Siren RX Frequency with Order)	<b>\$ 1,580.00</b>

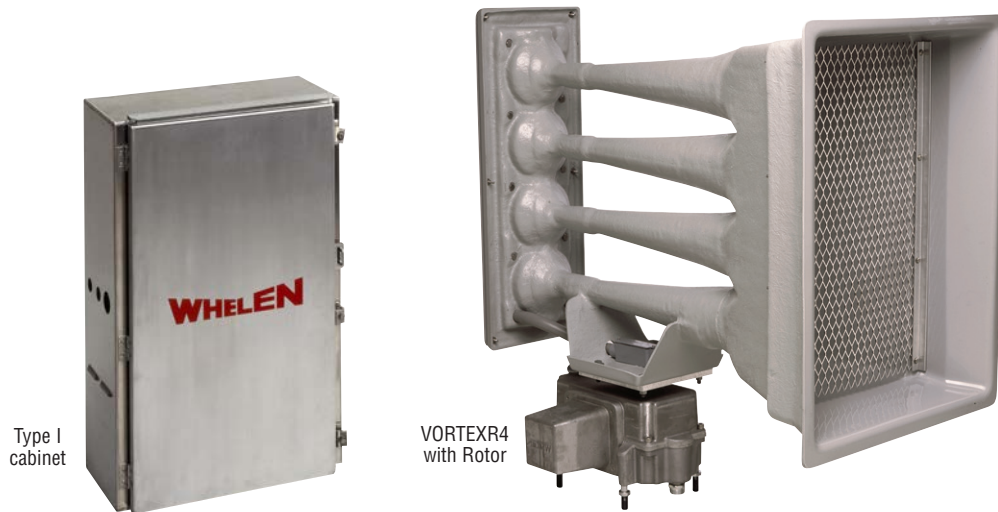
### OMNI-ALERT Series Two-Tone Sequential

WPSTTU	01-1469242-00	Two-Tone Decoder Option, includes (1) Decoder (Customer to Complete and Return Two-Tone Work Sheet with Order)	<b>\$ 400.00</b>
2TTM	75-0317299-00	Additional Two-Tone Decoder	<b>\$ 280.00</b>

## OMNI-ALERT™ Series Activation Controls (Cont'd)

Models	Part Number	Description	2019 List Price
<b>OMNI-ALERT Series Two-Way Controls</b>			
AUXCS	01-1467765-00	Auxiliary Control and Status Option (Control Inputs for All Siren Tone Commands, Si-Test® and 16 Digital Voice Messages (WPS and IPS Only), Relay Contact Status Outputs for Battery Charger AC Input Present, System Battery Voltage Above 18 VDC, Speaker Driver/Amplifier Partial, Speaker Driver/Amplifier Full, Cabinet Intrusion)	\$ 465.00
C2030LL	01-1469056-00	Two-Way Land Line Interface, 600 Ohm Audio Connection	\$ 485.00
C2030NV	01-1418319-03	Two-Way 10 Digit DTMF Narrow Band VHF 144-174 MHz Radio Option, includes Radio with Interface, Radio to Antenna Lightning Arrestor Cable, Antenna Lightning Arrestor, 35' of RG58 Antenna Cable and 3db Gain Omni-Directional 144-174 MHz Antenna (Supply Siren RX and TX Frequencies with Order)	\$ 1,730.00
C2030NV2	01-1418319-04	Two-Way 10 Digit DTMF Narrow Band VHF 138-174 MHz Radio Option, includes Radio with Interface, Radio to Antenna Lightning Arrestor Cable, Antenna Lightning Arrestor, 35' of RG58 Antenna Cable and 3db Gain Omni-Directional 132-174 MHz Antenna (Supply Siren RX and TX Frequencies with Order)	\$ 1,730.00
C2030NU1	01-1418319-00	Two-Way 10 Digit DTMF Narrow Band UHF 400.6-416.5 MHz Radio Option, includes Radio with Interface, Radio to Antenna Lightning Arrestor Cable, Antenna Lightning Arrestor, 35' of RG58 Antenna Cable and 5db Gain Omni-Directional 406-430 MHz Antenna (Supply Siren RX and TX Frequencies with Order)	\$ 1,730.00
C2030NU2	01-1418319-01	Two-Way 10 Digit DTMF Narrow Band UHF 411-429 MHz Radio Option, includes Radio with Interface, Radio to Antenna Lightning Arrestor Cable, Antenna Lightning Arrestor, 35' of RG58 Antenna Cable and 5db Gain Omni-Directional 406-430 MHz Antenna (Supply Siren RX and TX Frequencies with Order)	\$ 1,730.00
C2030NU3	01-1418319-02	Two-Way 10 Digit DTMF Narrow Band UHF 450-470 MHz Radio Option, includes Radio with Interface, Radio to Antenna Lightning Arrestor Cable, Antenna Lightning Arrestor, 35' of RG58 Antenna Cable and 5db Gain Omni-Directional 450-470 MHz Antenna (Supply Siren RX and TX Frequencies with Order)	\$ 1,730.00
<b>OMNI-ALERT Series Options</b>			
INTRU	01-0342792-00	Intrusion Alarm for Type 1 Cabinet and FPU Only	\$ 150.00
STATUS	01-1463315-00	Cabinet Window LED Status Indicator	\$ 325.00
PGINT1	01-1485907-10	Paging Interface Option Type I Cabinet (Provides a 600 Ohm 1 Vrms Audio Interface for Handing Off Siren Audio to a Paging Amplifier or Voice Fire Alarm)	\$ 280.00
DELPTBWP	01-1416826-00	Pole Top Bracket DEDUCT	\$ (200.00)
BSETVOR	01-1425635-01	One Pair of Whelen Approved Batteries for VortexR/Hornet/OmniAlert/Firehouse Series Siren	\$ 650.00
<b>Longer Speaker Cable Options</b>			
5PAIR60	02-0484227-01	Option 60' WPS2900 1 - 5 Cell Speaker Cable With Connectors (Removes 50' Cable and Adds 60' 5 Pair Cable)	\$ 80.00
5PAIR65	02-0484227-07	Option 65' WPS2900 1 - 5 Cell Speaker Cable With Connectors (Removes 50' Cable and Adds 65' 5 Pair Cable)	\$ 120.00
5PAIR75	02-0484227-02	Option 75' WPS2900 1 - 5 Cell Speaker Cable With Connectors (Removes 50' Cable and Adds 75' 5 Pair Cable)	\$ 200.00
5PAIR100	02-0484227-03	Option 100' WPS2900 1 - 5 Cell Speaker Cable With Connectors (Removes 50' Cable and Adds 100' 5 Pair Cable)	\$ 400.00
<b>OMNI-ALERT Series Solar Option</b>			
VSBC280	01-1468095-01	VortexR/Hornet/OmniAlert/Firehouse 80 Watt Solar Option (Includes (2) 80 Watt Panels, Panel Pole Mounting Bracket and 45' Cable) Replaces Standard VortexR/Hornet/OmniAlert/Firehouse AC Charger with Solar Regulator	\$ 3,000.00

## VORTEX™ Series



**VORTEX Series Directional/Oscillating High Power Tone Only Siren**, includes Fully Assembled Speaker/Rotor Assembly with Speaker Drivers, 50' of Speaker/Rotor Cable. Fully Assembled Aluminum Type I Control Cabinet with Power Amplifiers, ESC2030 Siren Controller, 5A 110/120 VAC Battery Charger, and Rotor Oscillator Module (**Batteries and Pole Top Bracket Not Included**)

Models	Part Number	Description	2019 List Price
VORTEXR2	01-1486011-02	Same description as above with <b>800 Watt</b> Tone Only Siren, with <b>(2) 400 Watt Speaker Drivers</b> , Aluminum Type I Control Cabinet with <b>(2) Power Amplifiers</b>	<b>\$ 14,595.00</b>
VORTEXR3	01-1486011-03	Same description as above with <b>1200 Watt</b> Tone Only Siren, with <b>(3) 400 Watt Speaker Drivers</b> , Aluminum Type I Control Cabinet with <b>(3) Power Amplifiers</b>	<b>\$ 15,495.00</b>
VORTEXR4	01-1486011-04	Same description as above with <b>1600 Watt</b> Tone Only Siren, with <b>(4) 400 Watt Speaker Drivers</b> , Aluminum Type I Control Cabinet with <b>(4) Power Amplifiers</b>	<b>\$ 16,595.00</b>

## VORTEX Series Activation Controls

### VORTEX Series One-Way Controls

AUXIN	01-1469243-00	Limited Function Auxiliary Board for Contact Closure Activation (Control Inputs for All Siren Tone Commands, Cancel, Si-Test® and 4 Digital Voice Messages (WPS and IPS Only))	<b>\$ 185.00</b>
D2030LL	01-1469056-02	One-Way Land Line Interface, 600 Ohm Audio Connection	<b>\$ 385.00</b>
D2030NV	01-1418320-03	One-Way 10 Digit DTMF Narrow Band VHF 138-174 MHz Radio Option (Supply Siren RX Frequency with Order)	<b>\$ 1,580.00</b>
D2030NU1	01-1418320-00	One-Way 10 Digit DTMF Narrow Band UHF 400.6-416.5 MHz Radio Option (Supply Siren RX Frequency with Order)	<b>\$ 1,580.00</b>
D2030NU2	01-1418320-01	One-Way 10 Digit DTMF Narrow Band UHF 411-429 MHz Radio Option (Supply Siren RX Frequency with Order)	<b>\$ 1,580.00</b>
D2030NU3	01-1418320-02	One-Way 10 Digit DTMF Narrow Band UHF 450-470 MHz Radio Option (Supply Siren RX Frequency with Order)	<b>\$ 1,580.00</b>

### VORTEX Series Two-Tone Sequential

WPSTTU	01-1469242-00	Two-Tone Decoder Option, includes (1) Decoder (Customer to Complete and Return Two-Tone Work Sheet with Order)	<b>\$ 395.00</b>
2TTM	75-0317299-00	Additional Two-Tone Decoder	<b>\$ 280.00</b>

## VORTEX™ Series Activation Controls (Cont'd)

Models	Part Number	Description	2019 List Price
<b>VORTEX Series Two-Way Controls</b>			
AUXCS	01-1467765-00	Auxiliary Control and Status Option (Control Inputs for All Siren Tone Commands, Si-Test® and 16 Digital Voice Messages (WPS and IPS Only), Relay Contact Status Outputs for Battery Charger AC Input Present, System Battery Voltage Above 18 VDC, Speaker Driver/Amplifier Partial, Speaker Driver/Amplifier Full, Cabinet Intrusion)	\$ 465.00
C2030LL	01-1469056-00	Two-Way Land Line Interface, 600 Ohm Audio Connection	\$ 485.00
C2030NV	01-1418319-03	Two-Way 10 Digit DTMF Narrow Band VHF 144-174 MHz Radio Option, includes Radio with Interface, Radio to Antenna Lightning Arrestor Cable, Antenna Lightning Arrestor, 35' of RG58 Antenna Cable and 3db Gain Omni-Directional 144-174 MHz Antenna (Supply Siren RX and TX Frequencies with Order)	\$ 1,730.00
C2030NV2	01-1418319-04	Two-Way 10 Digit DTMF Narrow Band VHF 138-174 MHz Radio Option, includes Radio with Interface, Radio to Antenna Lightning Arrestor Cable, Antenna Lightning Arrestor, 35' of RG58 Antenna Cable and 3db Gain Omni-Directional 132-174 MHz Antenna (Supply Siren RX and TX Frequencies with Order)	\$ 1,730.00
C2030NU1	01-1418319-00	Two-Way 10 Digit DTMF Narrow Band UHF 400.6-416.5 MHz Radio Option, includes Radio with Interface, Radio to Antenna Lightning Arrestor Cable, Antenna Lightning Arrestor, 35' of RG58 Antenna Cable and 5db Gain Omni-Directional 406-430 MHz Antenna (Supply Siren RX and TX Frequencies with Order)	\$ 1,730.00
C2030NU2	01-1418319-01	Two-Way 10 Digit DTMF Narrow Band UHF 411-429 MHz Radio Option, includes Radio with Interface, Radio to Antenna Lightning Arrestor Cable, Antenna Lightning Arrestor, 35' of RG58 Antenna Cable and 5db Gain Omni-Directional 406-430 MHz Antenna (Supply Siren RX and TX Frequencies with Order)	\$ 1,730.00
C2030NU3	01-1418319-02	Two-Way 10 Digit DTMF Narrow Band UHF 450-470 MHz Radio Option, includes Radio with Interface, Radio to Antenna Lightning Arrestor Cable, Antenna Lightning Arrestor, 35' of RG58 Antenna Cable and 5db Gain Omni-Directional 450-470 MHz Antenna (Supply Siren RX and TX Frequencies with Order)	\$ 1,730.00
<b>VORTEX Series Options</b>			
INTRU	01-0342792-00	Intrusion Alarm for Type 1 Cabinet and FPU Only	\$ 150.00
STATUS	01-1463315-00	Cabinet Window LED Status Indicator	\$ 325.00
PGINT1	01-1485907-10	Paging Interface Option Type I Cabinet (Provides a 600 Ohm 1 Vrms Audio Interface for Handing Off Siren Audio to a Paging Amplifier or Voice Fire Alarm)	\$ 280.00
PTB	01-0411446-00	Siren Speaker Pole Top Mounting Bracket	\$ 600.00
BSETVOR	01-1425635-01	One Pair of Whelen Approved Batteries for VortexR/Hornet/OmniAlert/Firehouse Series Siren	\$ 650.00
<b>VORTEX Series Solar Option</b>			
VSBC280	01-1468095-01	VortexR/Hornet/OmniAlert/Firehouse 80 Watt Solar Option (Includes (2) 80 Watt Panels, Panel Pole Mounting Bracket and 45' Cable) Replaces Standard VortexR/Hornet/OmniAlert/Firehouse AC Charger with Solar Regulator	\$ 3,000.00

## HORNET™ Series



HORNET  
with Rotor



Type I  
cabinet

### HORNET - High Power Siren

Models	Part Number	Description	2019 List Price
HORNET	01-1486012-00	High Power Siren, Aluminum Cabinet (Batteries & Pole Top Bracket Not Included)	\$ 9,895.00

### HORNET Series Activation Controls

#### HORNET Series One-Way Controls

AUXIN	01-1469243-00	Limited Function Auxiliary Board for Contact Closure Activation (Control Inputs for All Siren Tone Commands, Cancel, Si-Test® and 4 Digital Voice Messages (WPS and IPS Only))	\$ 185.00
D2030LL	01-1469056-02	One-Way Land Line Interface, 600 Ohm Audio Connection	\$ 385.00
D2030NV	01-1418320-03	One-Way 10 Digit DTMF Narrow Band VHF 138-174 MHz Radio Option (Supply Siren RX Frequency with Order)	\$ 1,580.00
D2030NU1	01-1418320-00	One-Way 10 Digit DTMF Narrow Band UHF 400.6-416.5 MHz Radio Option (Supply Siren RX Frequency with Order)	\$ 1,580.00
D2030NU2	01-1418320-01	One-Way 10 Digit DTMF Narrow Band UHF 411-429 MHz Radio Option (Supply Siren RX Frequency with Order)	\$ 1,580.00
D2030NU3	01-1418320-02	One-Way 10 Digit DTMF Narrow Band UHF 450-470 MHz Radio Option (Supply Siren RX Frequency with Order)	\$ 1,580.00

#### HORNET Series Two-Tone SEQUENTIAL

WPSTTU	01-1469242-00	Two-Tone Decoder Option, includes (1) Decoder (Customer to Complete and Return Two-Tone Work Sheet with Order)	\$ 395.00
2TTM	75-0317299-00	Additional Two-Tone Decoder	\$ 280.00



## HORNET™ Series Activation Controls (Cont'd)

Models	Part Number	Description	2019 List Price
<b>HORNET Series Two-Way Controls</b>			
AUXCS	01-1467765-00	Auxiliary Control and Status Option (Control Inputs for All Siren Tone Commands, Si-Test® and 16 Digital Voice Messages (WPS and IPS Only), Relay Contact Status Outputs for Battery Charger AC Input Present, System Battery Voltage Above 18 VDC, Speaker Driver/Amplifier Partial, Speaker Driver/Amplifier Full, Cabinet Intrusion)	\$ 465.00
C2030LL	01-1469056-00	Two-Way Land Line Interface, 600 Ohm Audio Connection	\$ 485.00
C2030NV	01-1418319-03	Two-Way 10 Digit DTMF Narrow Band VHF 144-174 MHz Radio Option, includes Radio with Interface, Radio to Antenna Lightning Arrestor Cable, Antenna Lightning Arrestor, 35' of RG58 Antenna Cable & 3db Gain Omni-Directional 144-174 MHz Antenna (Supply Siren RX and TX Frequencies with Order)	\$ 1,730.00
C2030NV2	01-1418319-04	Two-Way 10 Digit DTMF Narrow Band VHF 138-174 MHz Radio Option, includes Radio with Interface, Radio to Antenna Lightning Arrestor Cable, Antenna Lightning Arrestor, 35' of RG58 Antenna Cable and 3db Gain Omni-Directional 132-174 MHz Antenna (Supply Siren RX and TX Frequencies with Order)	\$ 1,730.00
C2030NU1	01-1418319-00	Two-Way 10 Digit DTMF Narrow Band UHF 400.6-416.5 MHz Radio Option, includes Radio with Interface, Radio to Antenna Lightning Arrestor Cable, Antenna Lightning Arrestor, 35' of RG58 Antenna Cable and 5db Gain Omni-Directional 406-430 MHz Antenna (Supply Siren RX and TX Frequencies with Order)	\$ 1,730.00
C2030NU2	01-1418319-01	Two-Way 10 Digit DTMF Narrow Band UHF 411-429 MHz Radio Option, includes Radio with Interface, Radio to Antenna Lightning Arrestor Cable, Antenna Lightning Arrestor, 35' of RG58 Antenna Cable and 5db Gain Omni-Directional 406-430 MHz Antenna (Supply Siren RX and TX Frequencies with Order)	\$ 1,730.00
C2030NU3	01-1418319-02	Two-Way 10 Digit DTMF Narrow Band UHF 450-470 MHz Radio Option, includes Radio with Interface, Radio to Antenna Lightning Arrestor Cable, Antenna Lightning Arrestor, 35' of RG58 Antenna Cable and 5db Gain Omni-Directional 450-470 MHz Antenna (Supply Siren RX and TX Frequencies with Order)	\$ 1,730.00
<b>HORNET Series Options</b>			
INTRU	01-0342792-00	Intrusion Alarm for Type 1 Cabinet and FPU Only	\$ 150.00
STATUS	01-1463315-00	Cabinet Window LED Status Indicator	\$ 325.00
PGINT1	01-1485907-10	Paging Interface Option Type I Cabinet (Provides a 600 Ohm 1 Vrms Audio Interface for Handing Off Siren Audio to a Paging Amplifier or Voice Fire Alarm)	\$ 280.00
PTB	01-0411446-00	Siren Speaker Pole Top Mounting Bracket	\$ 600.00
BSETVOR	01-1425635-01	One Pair of Whelen Approved Batteries for VortexR/Hornet/OmniAlert/Firehouse Series Siren	\$ 650.00
<b>HORNET Series Solar Option</b>			
VSBC280	01-1468095-01	VortexR/Hornet/OmniAlert/Firehouse 80 Watt Solar Option (Includes (2) 80 Watt Panels, Panel Pole Mounting Bracket and 45' Cable)) Replaces Standard VortexR/Hornet/OmniAlert/Firehouse AC Charger with Solar Regulator	\$ 3,000.00

## FIREHOUSE Series



**Firehouse Siren Omni-Directional High Power Tone Only Siren Series**, includes Speaker Array, Speaker Drivers, 50' of Speaker Cable and Pole Top Mounting Bracket. Aluminum Type I Control Cabinet includes Tone Only Power Amplifier(s), ESC2030 Siren Controller, 5A 110/120 VAC Battery Charger and AUXIN Option For Momentary Dry Contact Closure Control (**Batteries Not Included**)

Models	Part Number	Description	2019 List Price
FHS1	01-1486010-F1	Same description as above with <b>400 Watt</b> Tone Only Siren and with Aluminum Type I Control Cabinet includes <b>one (1)</b> Tone Only Power Amplifier	\$ 6,295.00
FHS2	01-1486010-F2	Same description as above with <b>800 Watt</b> Tone Only Siren and with Aluminum Type I Control Cabinet includes <b>two (2)</b> Tone Only Power Amplifiers	\$ 8,395.00
FHS3	01-1486010-F3	Same description as above with <b>1200 Watt</b> Tone Only Siren and with Aluminum Type I Control Cabinet includes <b>three (3)</b> Tone Only Power Amplifiers	\$ 10,495.00
FHS4	01-1486010-F4	Same description as above with <b>1600 Watt</b> Tone Only Siren and with Aluminum Type I Control Cabinet includes <b>four (4)</b> Tone Only Power Amplifiers	\$ 12,595.00

## FIREHOUSE Series Activation Controls

### FIREHOUSE Series One-Way Controls

AUXIN	01-1469243-00	Limited Function Auxiliary Board for Contact Closure Activation (Control Inputs for All Siren Tone Commands, Cancel, Si-Test <sup>®</sup> and 4 Digital Voice Messages (WPS and IPS Only), included in FHS Series siren)	\$ 185.00
D2030LL	01-1469056-02	One-Way Land Line Interface, 600 Ohm Audio Connection	\$ 385.00
D2030NV	01-1418320-03	One-Way 10 Digit DTMF Narrow Band VHF 138-174 MHz Radio Option (Supply Siren RX Frequency with Order)	\$ 1,580.00
D2030NU1	01-1418320-00	One-Way 10 Digit DTMF Narrow Band UHF 400.6-416.5 MHz Radio Option (Supply Siren RX Frequency with Order)	\$ 1,580.00
D2030NU2	01-1418320-01	One-Way 10 Digit DTMF Narrow Band UHF 411-429 MHz Radio Option (Supply Siren RX Frequency with Order)	\$ 1,580.00
D2030NU3	01-1418320-02	One-Way 10 Digit DTMF Narrow Band UHF 450-470 MHz Radio Option (Supply Siren RX Frequency with Order)	\$ 1,580.00

## FIREHOUSE Series Activation Controls (Cont'd)

Models	Part Number	Description	2019 List Price
<b>FIREHOUSE Series Two-Tone Sequential</b>			
WPSTTU	01-1469242-00	Two-Tone Decoder Option, includes (1) Decoder (Customer to Complete and Return Two-Tone Work Sheet with Order)	\$ 395.00
2TTM	75-0317299-00	Additional Two-Tone Decoder	\$ 280.00
<b>FIREHOUSE Series Two-Way Controls</b>			
AUXCS	01-1467765-00	Auxiliary Control and Status Option (Control Inputs for All Siren Tone Commands, Si-Test® and 16 Digital Voice Messages (WPS and IPS Only), Relay Contact Status Outputs for Battery Charger AC Input Present, System Battery Voltage Above 18 VDC, Speaker Driver/Amplifier Partial, Speaker Driver/Amplifier Full, Cabinet Intrusion)	\$ 465.00
C2030LL	01-1469056-00	Two-Way Land Line Interface, 600 Ohm Audio Connection	\$ 485.00
C2030NV	01-1418319-03	Two-Way 10 Digit DTMF Narrow Band VHF 144-174 MHz Radio Option, includes Radio with Interface, Radio to Antenna Lightning Arrestor Cable, Antenna Lightning Arrestor, 35' of RG58 Antenna Cable and 3db Gain Omni-Directional 144-174 MHz Antenna (Supply Siren RX and TX Frequencies with Order)	\$ 1,730.00
C2030NV2	01-1418319-04	Two-Way 10 Digit DTMF Narrow Band VHF 138-174 MHz Radio Option, includes Radio with Interface, Radio to Antenna Lightning Arrestor Cable, Antenna Lightning Arrestor, 35' of RG58 Antenna Cable and 3db Gain Omni-Directional 132-174 MHz Antenna (Supply Siren RX and TX Frequencies with Order)	\$ 1,730.00
C2030NU1	01-1418319-00	Two-Way 10 Digit DTMF Narrow Band UHF 400.6-416.5 MHz Radio Option, includes Radio with Interface, Radio to Antenna Lightning Arrestor Cable, Antenna Lightning Arrestor, 35' of RG58 Antenna Cable and 5db Gain Omni-Directional 406-430 MHz Antenna (Supply Siren RX and TX Frequencies with Order)	\$ 1,730.00
C2030NU2	01-1418319-01	Two-Way 10 Digit DTMF Narrow Band UHF 411-429 MHz Radio Option, includes Radio with Interface, Radio to Antenna Lightning Arrestor Cable, Antenna Lightning Arrestor, 35' of RG58 Antenna Cable and 5db Gain Omni-Directional 406-430 MHz Antenna (Supply Siren RX and TX Frequencies with Order)	\$ 1,730.00
C2030NU3	01-1418319-02	Two-Way 10 Digit DTMF Narrow Band UHF 450-470 MHz Radio Option, includes Radio with Interface, Radio to Antenna Lightning Arrestor Cable, Antenna Lightning Arrestor, 35' of RG58 Antenna Cable and 5db Gain Omni-Directional 450-470 MHz Antenna (Supply Siren RX and TX Frequencies with Order)	\$ 1,730.00
<b>FIREHOUSE Series Options</b>			
INTRU	01-0342792-00	Intrusion Alarm for Type 1 Cabinet and FPU Only	\$ 150.00
STATUS	01-1463315-00	Cabinet Window LED Status Indicator	\$ 325.00
PGINT1	01-1485907-10	Paging Interface Option Type I Cabinet (Provides a 600 Ohm 1 Vrms Audio Interface for Handing Off Siren Audio to a Paging Amplifier or Voice Fire Alarm)	\$ 280.00
DELPTBWP	01-1416826-00	Pole Top Bracket DEDUCT	\$ (200.00)
BSETVOR	01-1425635-01	One Pair of Whelen Approved Batteries for VortexR/Hornet/OmniAlert/Firehouse Series Siren	\$ 650.00
<b>FIREHOUSE Series Solar Option</b>			
VSBC280	01-1468095-01	VortexR/Hornet/OmniAlert/Firehouse 80 Watt Solar Option (Includes (2) 80 Watt Panels, Panel Pole Mounting Bracket and 45' Cable) Replaces Standard VortexR/Hornet/OmniAlert/Firehouse AC Charger with Solar Regulator	\$ 3,000.00

## IN-PLANT SYSTEM (IPS)

Type I cabinet



**IPS400 - IPS800** In-Plant Personnel Warning Systems, include Aluminum Type I Control Cabinet, IPS Four 100 Watt Output Power Amplifier, ESC2030 Siren Controller, 5A AC Battery Charger, UPS Style Batteries and RDVM1G Digital Voice Option Board (Supports up to 28 Messages for an Additional Charge) No Additional Charge if Using Existing Customer Messages on File (Customer to Verify and Supply Message List to be Used)

Models	Part Number	Description	2019 List Price
IPS400	01-1486008-00	Same description as above with <b>One (1) IPS Four 100 Watt Output Power Amplifier</b>	<b>\$ 3,995.00</b>
IPS800	01-1486008-01	Same description as above with <b>Two (2) IPS Four 100 Watt Output Power Amplifiers</b>	<b>\$ 4,965.00</b>

## IPS Activation Controls

### IPS One-Way Controls

<b>AUXIN</b>	01-1469243-00	Limited Function Auxiliary Board for Contact Closure Activation (Control Inputs for All Siren Tone Commands, Cancel, Si-Test <sup>®</sup> and 4 Digital Voice Messages (WPS and IPS Only))	<b>\$ 185.00</b>
<b>D2030LL</b>	01-1469056-02	One-Way Land Line Interface, 600 Ohm Audio Connection	<b>\$ 385.00</b>
<b>D2030NV</b>	01-1418320-03	One-Way 10 Digit DTMF Narrow Band VHF 138-174 MHz Radio Option (Supply Siren RX Frequency with Order)	<b>\$ 1,580.00</b>
<b>D2030NU1</b>	01-1418320-00	One-Way 10 Digit DTMF Narrow Band UHF 400.6-416.5 MHz Radio Option (Supply Siren RX Frequency with Order)	<b>\$ 1,580.00</b>
<b>D2030NU2</b>	01-1418320-01	One-Way 10 Digit DTMF Narrow Band UHF 411-429 MHz Radio Option (Supply Siren RX Frequency with Order)	<b>\$ 1,580.00</b>
<b>D2030NU3</b>	01-1418320-02	One-Way 10 Digit DTMF Narrow Band UHF 450-470 MHz Radio Option (Supply Siren RX Frequency with Order)	<b>\$ 1,580.00</b>

### IPS Two-Tone Sequential

<b>WPSTTU</b>	01-1469242-00	Two-Tone Decoder Option, includes (1) Decoder (Customer to Complete and Return Two-Tone Work Sheet with Order)	<b>\$ 395.00</b>
<b>2TTM</b>	75-0317299-00	Additional Two-Tone Decoder	<b>\$ 280.00</b>

### IPS Two-Way Controls

<b>NAUXCS1</b>	01-146F039-01	Notifier AUXCS (Vox/AUXCS) Type I Only (Honeywell Notifier Only)	<b>\$ 695.00</b>
<b>AUXCS</b>	01-1467765-00	Auxiliary Control and Status Option (Control Inputs for All Siren Tone Commands, Si-Test <sup>®</sup> and 16 Digital Voice Messages (WPS and IPS Only), Relay Contact Status Outputs for Battery Charger AC Input Present, System Battery Voltage Above 18 VDC, Speaker Driver/Amplifier Partial, Speaker Driver/Amplifier Full, Cabinet Intrusion)	<b>\$ 465.00</b>
<b>C2030LL</b>	01-1469056-00	Two-Way Land Line Interface, 600 Ohm Audio Connection	<b>\$ 485.00</b>

**IPS Two-Way Controls (Cont'd)**

Models	Part Number	Description	2019 List Price
<b>C2030NV</b>	01-1418319-03	Two-Way 10 Digit DTMF Narrow Band VHF 144-174 MHz Radio Option, includes Radio with Interface, Radio to Antenna Lightning Arrestor Cable, Antenna Lightning Arrestor, 35' of RG58 Antenna Cable and 3db Gain Omni-Directional 144-174 MHz Antenna (Supply Siren RX and TX Frequencies with Order)	<b>\$ 1,730.00</b>
<b>C2030NV2</b>	01-1418319-04	Two-Way 10 Digit DTMF Narrow Band VHF 138-174 MHz Radio Option, includes Radio with Interface, Radio to Antenna Lightning Arrestor Cable, Antenna Lightning Arrestor, 35' of RG58 Antenna Cable and 3db Gain Omni-Directional 132-174 MHz Antenna (Supply Siren RX and TX Frequencies with Order)	<b>\$ 1,730.00</b>
<b>C2030NU1</b>	01-1418319-00	Two-Way 10 Digit DTMF Narrow Band UHF 400.6-416.5 MHz Radio Option, includes Radio with Interface, Radio to Antenna Lightning Arrestor Cable, Antenna Lightning Arrestor, 35' of RG58 Antenna Cable and 5db Gain Omni-Directional 406-430 MHz Antenna (Supply Siren RX and TX Frequencies with Order)	<b>\$ 1,730.00</b>
<b>C2030NU2</b>	01-1418319-01	Two-Way 10 Digit DTMF Narrow Band UHF 411-429 MHz Radio Option, includes Radio with Interface, Radio to Antenna Lightning Arrestor Cable, Antenna Lightning Arrestor, 35' of RG58 Antenna Cable and 5db Gain Omni-Directional 406-430 MHz Antenna (Supply Siren RX and TX Frequencies with Order)	<b>\$ 1,730.00</b>
<b>C2030NU3</b>	01-1418319-02	Two-Way 10 Digit DTMF Narrow Band UHF 450-470 MHz Radio Option, includes Radio with Interface, Radio to Antenna Lightning Arrestor Cable, Antenna Lightning Arrestor, 35' of RG58 Antenna Cable and 5db Gain Omni-Directional 450-470 MHz Antenna (Supply Siren RX and TX Frequencies with Order)	<b>\$ 1,730.00</b>

**IPS Speakers**



WS15T / WS30T



WS15TR / WS15TEN



WS60T / WS100



WS100TCH



WSXPL6T3

<b>WS15T</b>	01-1461234-00	15 Watt Horn Speaker with Transformer and Mounting Bracket	<b>\$ 270.00</b>
<b>WS15TR</b>	01-1461485-00	Recessed Mount, 15 Watt Speaker	<b>\$ 250.00</b>
<b>WS15TEN</b>	01-1461486-00	Recessed Mount, 15 Watt Speaker with Grill and Mounting Ring for 24" Wide Ceiling Tile	<b>\$ 545.00</b>
<b>WS30T</b>	01-1461235-00	30 Watt Horn Speaker with Transformer and Mounting Bracket	<b>\$ 380.00</b>
<b>WS60T</b>	01-1461236-00	60 Watt Wide-Angle Speaker with Transformer and Mounting Bracket	<b>\$ 854.00</b>
<b>WSXPL6T3</b>	01-1461237-03	60 Watt Explosion Proof (Class 1, Group B,C,D) Wide-Angle Speaker with Transformer and Mounting Bracket	<b>\$ 1,340.00</b>
<b>WS100</b>	01-1461899-00	Wide-Angle 100 Watt Speaker Mounting Bracket	<b>\$ 515.00</b>
<b>WS100TCH</b>	01-1461901-00	Wide-Angle 100 Watt Speaker with Weatherproof Housing, Transformer and Mounting Bracket	<b>\$ 840.00</b>

**IPS Options**

<b>INTRU</b>	01-0342792-00	Intrusion Alarm for Type 1 Cabinet and FPU Only	<b>\$ 150.00</b>
<b>PGINT1</b>	01-1485907-10	Paging Interface Option Type I Cabinet (Provides a 600 Ohm 1 Vrms Audio Interface for Handing Off Siren Audio to a Paging Amplifier or Voice Fire Alarm)	<b>\$ 280.00</b>
<b>MSGPROG</b>	77-2100069A-1	Custom Message Programming (28 Message Maximum) Each	<b>\$ 175.00</b>
<b>MSGPROGL</b>	01-1463561-00	Library Message Charge (28 Message Maximum) Each	<b>\$25.00 NET</b>
<b>WPSNCMIC</b>	01-1446306-00	Noise Canceling Microphone with ESC2030 to Front Panel Harness	<b>\$ 85.00</b>

Models	Part Number	Description	2019 List Price
<b>IPS (Cont'd) - Lighting Accessories</b>			
LEDCTRL1	01-1469331-11	LED Controller Board Only, includes LED Control Board, Harness to ESC2030 and Motherboard and Board Mounting Hardware for Type I Siren Cabinet Only	\$ 490.00
L31HAF4	01-06859532AF	24 VDC Amber Class 1 Super-LED® Beacon (Requires LCWPS or LEDCTRL)	\$ 630.00
L31HBF4	01-06859532BF	24 VDC Blue Class 1 Super-LED Beacon (Requires LCWPS or LEDCTRL)	\$ 630.00
L31HCF4	01-068595323F	24 VDC Clear Class 1 Super-LED Beacon (Requires LCWPS or LEDCTRL)	\$ 630.00
L31HRF4	01-06859532RF	24 VDC Red Class 1 Super-LED Beacon (Requires LCWPS or LEDCTRL)	\$ 630.00
L32LAF4	01-06859632AF	24 VDC Amber Class 2 Super-LED Beacon (Requires LEDCTRL1)	\$ 395.00
L32LBF4	01-06859632BF	24 VDC Blue Class 2 Super-LED Beacon (Requires LEDCTRL1)	\$ 395.00
L32LRF4	01-06859632BF	24 VDC Red Class 2 Super-LED Beacon (Requires LEDCTRL1)	\$ 395.00
L360PMKT	01-0485953-00	L31 Series 1" Pipe Mounting Kit	\$ 39.00

## Base Station Controls

### BASE STATION CONTROLS ENCODERS & OPTIONS BASE STATION CONTROLS / ENCODER



E747	01-1467680-00	Central Station Control Desktop 18 Function Encoder, Controls up to 8 Digital Voice Messages includes 100 VAC - 240 VAC 50/60 Hz Wall Power Supply (Must Be Connected to Customer Supplied Base Station Radio)	\$ 745.00
E969	01-1485745-00	Central Station Control Desktop 35 Function Encoder, Controls up to 16 Digital Voice Messages includes 100 VAC - 240 VAC 50/60 Hz Wall Power Supply (Must Be Connected to Customer Supplied Base Station Radio)	\$ 1,195.00

### BASE STATION CONTROLS / ENCODER-DECODER



E1000	01-1487921-00	Central Station Control Desktop Encoder/Status Decoder, Controls up to 28 Digital Voice Messages includes 100 VAC - 240 VAC 50/60 Hz Wall Power Supply (Must Be Connected to Customer Supplied Base Station Radio)	\$ 2,000.00
-------	---------------	--	-------------

### BASE STATION CONTROLS ACCESSORY



WPSMIC		Noise Cancelling Microphone for Encoders	\$ 85.00
--------	--	--	----------

## Test Sets and Keyboard Field Test Equipment



SDPTS	01-0417077-01	Siren Diagnostic and Programming Tool Software with 6' Serial Cable	\$ 250.00
-------	---------------	---	-----------

# ALERT MONITORS



Models	Part Number	Description	2019 List Price
<b>VA2000 Alert Monitor &amp; Message Display</b>			
V2000NV1	01-1487195-V1	VA2000 Narrow Band VHF 138-174 MHz (Supply Frequency with Order)	\$ 1,540.00
V2000NU1	01-1487195-U1	VA2000 Narrow Band UHF 400.6-416.5 MHz (Supply Frequency with Order)	\$ 1,540.00
V2000NU2	01-1487195-U2	VA2000 Narrow Band UHF 411-429 MHz (Supply Frequency with Order)	\$ 1,540.00
V2000NU3	01-1487195-U3	VA2000 Narrow Band UHF 450-470 MHz (Supply Frequency with Order)	\$ 1,540.00
<b>VA2000 Alert Monitor Accessory</b>			
VA2BATT	01-1485897-00	VA2000 Battery Backup Option Battery Installation Kit, includes 12V .8 AH Battery, Battery Bracket, Hardware and 1A Auto Fuse	\$ 135.00
<b>VA2000 Alert Monitor Programming</b>			
VA2PROGA	77-5500253A-1	VA2000 Message Programming 1-15 Messages	\$ 130.00
VA2PROGB	77-5500254A-1	VA2000 Message Programming 16-45 Messages	\$ 205.00

## Replacement Parts

Models	Part Number	Description	2019 List Price
<b>CAB2901A</b>	01-1486858-01	<b>WPS2901A Aluminum Type II</b> Control Cabinet Assembly, includes (1) Power Amplifier, ESC2030 Siren Controller, 10A 110/120 VAC Battery Charger and RDVM1G Digital Voice Option Board (Supports up to 28 Messages for an Additional Charge), No Additional Charge if Using Existing Customer Messages on File (Customer to Verify and Supply Message List to be Used) <b>(Batteries Not Included)</b>	<b>\$ 5,400.00</b>
<b>CAB2902A</b>	01-1486858-02	<b>WPS2902A Aluminum Type II</b> Control Cabinet Assembly, includes (2) Power Amplifiers, ESC2030 Siren Controller, 10A 110/120 VAC Battery Charger and RDVM1G Digital Voice Option Board (Supports up to 28 Messages for an Additional Charge), No Additional Charge if Using Existing Customer Messages on File (Customer to Verify and Supply Message List to be Used) <b>(Batteries Not Included)</b>	<b>\$ 5,930.00</b>
<b>CAB2903A</b>	01-1486858-03	<b>WPS2903A Aluminum Type II</b> Control Cabinet Assembly, includes (3) Power Amplifiers, ESC2030 Siren Controller, 10A 110/120 VAC Battery Charger and RDVM1G Digital Voice Option Board (Supports up to 28 Messages for an Additional Charge), No Additional Charge if Using Existing Customer Messages on File (Customer to Verify and Supply Message List to be Used) <b>(Batteries Not Included)</b>	<b>\$ 6,450.00</b>
<b>CAB2904A</b>	01-1486858-04	<b>WPS2904A Aluminum Type II</b> Control Cabinet Assembly, includes (4) Power Amplifiers, ESC2030 Siren Controller, 10A 110/120 VAC Battery Charger and RDVM1G Digital Voice Option Board (Supports up to 28 Messages for an Additional Charge), No Additional Charge if Using Existing Customer Messages on File (Customer to Verify and Supply Message List to be Used) <b>(Batteries Not Included)</b>	<b>\$ 7,000.00</b>
<b>CAB2905A</b>	01-1486858-05	<b>WPS2905A Aluminum Type II</b> Control Cabinet Assembly, includes (5) Power Amplifiers, ESC2030 Siren Controller, 10A 110/120 VAC Battery Charger and RDVM1G Digital Voice Option Board (Supports up to 28 Messages for an Additional Charge), No Additional Charge if Using Existing Customer Messages on File (Customer to Verify and Supply Message List to be Used) <b>(Batteries Not Included)</b>	<b>\$ 7,520.00</b>
<b>CAB2906A</b>	01-1486858-06	<b>WPS2906A Aluminum Type III</b> Control Cabinet Assembly, includes (6) Power Amplifiers, ESC2030 Siren Controller, 10A 110/120 VAC Battery Charger and RDVM1G Digital Voice Option Board (Supports up to 28 Messages for an Additional Charge), No Additional Charge if Using Existing Customer Messages on File (Customer to Verify and Supply Message List to be Used) <b>(Batteries Not Included)</b>	<b>\$ 9,240.00</b>
<b>CAB2907A</b>	01-1486858-07	<b>WPS2907A Aluminum Type III</b> Control Cabinet Assembly, includes (7) Power Amplifiers, ESC2030 Siren Controller, 10A 110/120 VAC Battery Charger and RDVM1G Digital Voice Option Board (Supports up to 28 Messages for an Additional Charge), No Additional Charge if Using Existing Customer Messages on File (Customer to Verify and Supply Message List to be Used) <b>(Batteries Not Included)</b>	<b>\$ 9,760.00</b>
<b>CAB2908A</b>	01-1486858-08	<b>WPS2908A Aluminum Type Type III</b> Control Cabinet Assembly, includes (8) Power Amplifiers, ESC2030 Siren Controller, 10A 110/120 VAC Battery Charger and RDVM1G Digital Voice Option Board (Supports up to 28 Messages for an Additional Charge), No Additional Charge if Using Existing Customer Messages on File (Customer to Verify and Supply Message List to be Used) <b>(Batteries Not Included)</b>	<b>\$ 10,300.00</b>
<b>CAB2909A</b>	01-1486858-09	<b>WPS2909A Aluminum Type III</b> Control Cabinet Assembly, includes (9) Power Amplifiers, ESC2030 Siren Controller, 10A 110/120 VAC Battery Charger and RDVM1G Digital Voice Option Board (Supports up to 28 Messages for an Additional Charge), No Additional Charge if Using Existing Customer Messages on File (Customer to Verify and Supply Message List to be Used) <b>(Batteries Not Included)</b>	<b>\$ 10,900.00</b>
<b>CAB2910A</b>	01-1486858-10	<b>WPS2910A Aluminum Type III</b> Control Cabinet Assembly, includes (10) Power Amplifiers, ESC2030 Siren Controller, 10A 110/120 VAC Battery Charger and RDVM1G Digital Voice Option Board (Supports up to 28 Messages for an Additional Charge), No Additional Charge if Using Existing Customer Messages on File (Customer to Verify and Supply Message List to be Used) <b>(Batteries Not Included)</b>	<b>\$ 11,410.00</b>



## Replacement Parts (cont'd)

Models	Part Number	Description	2019 List Price
N/A	01-1486939-01	<b>WPS2901S 304 Stainless Steel Type II</b> Control Cabinet Assembly, includes (1) Power Amplifier, ESC2030 Siren Controller, 10A 110/120 VAC Battery Charger and RDVM1G Digital Voice Option Board (Supports up to 28 Messages for an Additional Charge), No Additional Charge if Using Existing Customer Messages on File (Customer to Verify and Supply Message List to be Used) <b>(Batteries Not Included)</b>	<b>\$ 5,950.00</b>
N/A	01-1486939-02	<b>WPS2902S 304 Stainless Steel Type II</b> Control Cabinet Assembly, includes (2) Power Amplifiers, ESC2030 Siren Controller, 10A 110/120 VAC Battery Charger and RDVM1G Digital Voice Option Board (Supports up to 28 Messages for an Additional Charge), No Additional Charge if Using Existing Customer Messages on File (Customer to Verify and Supply Message List to be Used) <b>(Batteries Not Included)</b>	<b>\$ 6,450.00</b>
N/A	01-1486939-03	<b>WPS2903S 304 Stainless Steel Type II</b> Control Cabinet Assembly, includes (3) Power Amplifiers, ESC2030 Siren Controller, 10A 110/120 VAC Battery Charger and RDVM1G Digital Voice Option Board (Supports up to 28 Messages for an Additional Charge), No Additional Charge if Using Existing Customer Messages on File (Customer to Verify and Supply Message List to be Used) <b>(Batteries Not Included)</b>	<b>\$ 6,950.00</b>
N/A	01-1486939-04	<b>WPS2904S 304 Stainless Steel Type II</b> Control Cabinet Assembly, includes (4) Power Amplifiers, ESC2030 Siren Controller, 10A 110/120 VAC Battery Charger and RDVM1G Digital Voice Option Board (Supports up to 28 Messages for an Additional Charge), No Additional Charge if Using Existing Customer Messages on File (Customer to Verify and Supply Message List to be Used) <b>(Batteries Not Included)</b>	<b>\$ 7,470.00</b>
N/A	01-1486939-05	<b>WPS2905 304 Stainless Steel Type II</b> Control Cabinet Assembly, includes (5) Power Amplifiers, ESC2030 Siren Controller, 10A 110/120 VAC Battery Charger and RDVM1G Digital Voice Option Board (Supports up to 28 Messages for an Additional Charge), No Additional Charge if Using Existing Customer Messages on File (Customer to Verify and Supply Message List to be Used) <b>(Batteries Not Included)</b>	<b>\$ 7,980.00</b>
N/A	01-1486939-06	<b>WPS2906 304 Stainless Steel Type III</b> Control Cabinet Assembly, includes (6) Power Amplifiers, ESC2030 Siren Controller, 10A 110/120 VAC Battery Charger and RDVM1G Digital Voice Option Board (Supports up to 28 Messages for an Additional Charge), No Additional Charge if Using Existing Customer Messages on File (Customer to Verify and Supply Message List to be Used) <b>(Batteries Not Included)</b>	<b>\$ 9,750.00</b>
N/A	01-1486939-07	<b>WPS2907 304 Stainless Steel Type III</b> Control Cabinet Assembly, includes (7) Power Amplifiers, ESC2030 Siren Controller, 10A 110/120 VAC Battery Charger and RDVM1G Digital Voice Option Board (Supports up to 28 Messages for an Additional Charge), No Additional Charge if Using Existing Customer Messages on File (Customer to Verify and Supply Message List to be Used) <b>(Batteries Not Included)</b>	<b>\$ 10,250.00</b>
N/A	01-1486939-08	<b>WPS2908 304 Stainless Steel Type III</b> Control Cabinet Assembly, includes (8) Power Amplifiers, ESC2030 Siren Controller, 10A 110/120 VAC Battery Charger and RDVM1G Digital Voice Option Board (Supports up to 28 Messages for an Additional Charge), No Additional Charge if Using Existing Customer Messages on File (Customer to Verify and Supply Message List to be Used) <b>(Batteries Not Included)</b>	<b>\$ 10,770.00</b>
N/A	01-1486939-09	<b>WPS2909S 304 Stainless Steel Type III</b> Control Cabinet Assembly, includes (9) Power Amplifiers, ESC2030 Siren Controller, 10A 110/120 VAC Battery Charger and RDVM1G Digital Voice Option Board (Supports up to 28 Messages for an Additional Charge), No Additional Charge if Using Existing Customer Messages on File (Customer to Verify and Supply Message List to be Used) <b>(Batteries Not Included)</b>	<b>\$ 11,280.00</b>
N/A	01-1486939-10	<b>WPS2910S 304 Stainless Steel Type III</b> Control Cabinet Assembly, includes (10) Power Amplifiers, ESC2030 Siren Controller, 10A 110/120 VAC Battery Charger and RDVM1G Digital Voice Option Board (Supports up to 28 Messages for an Additional Charge), No Additional Charge if Using Existing Customer Messages on File (Customer to Verify and Supply Message List to be Used) <b>(Batteries Not Included)</b>	<b>\$ 11,800.00</b>

## Replacement Parts (cont'd)

Models	Part Number	Description	2019 List Price
CABHOR	01-1486007-00	<b>HORNET 400 Watt</b> High Power Tone Only Siren Aluminum Type I Control Cabinet Assembly, includes (1) Tone Only Power Amplifier, ESC2030 Siren Controller, Rotor Oscillator Board and 5A 110/120 VAC Battery Charger ( <b>Batteries Not Included</b> )	<b>\$ 3,260.00</b>
CABVO1	01-1486007-01	<b>Omni-Alert 400 Watt</b> High Power Tone Only Siren Aluminum Type I Control Cabinet Assembly, includes (1) Tone Only Power Amplifier, ESC2030 Siren Controller and 5A 110/120 VAC Battery Charger ( <b>Batteries Not Included</b> )	<b>\$ 3,200.00</b>
CABVO2	01-1486007-02	<b>Omni-Alert 800 Watt</b> High Power Tone Only Siren Aluminum Type I Control Cabinet Assembly, includes (2) Tone Only Power Amplifiers, ESC2030 Siren Controller and 5A 110/120 VAC Battery Charger ( <b>Batteries Not Included</b> )	<b>\$ 3,470.00</b>
CABVO3	01-1486007-03	<b>Omni-Alert 1200 Watt</b> High Power Tone Only Siren Aluminum Type I Control Cabinet Assembly, includes (3) Tone Only Power Amplifiers, ESC2030 Siren Controller and 5A 110/120 VAC Battery Charger ( <b>Batteries Not Included</b> )	<b>\$ 3,760.00</b>
CABVO4	01-1486007-04	<b>Omni-Alert 1600 Watt</b> High Power Tone Only Siren Aluminum Type I Control Cabinet Assembly, includes (4) Tone Only Power Amplifiers, ESC2030 Siren Controller and 5A 110/120 VAC Battery Charger ( <b>Batteries Not Included</b> )	<b>\$ 4,090.00</b>
CABVR3	01-1486007-03	<b>VORTEXR3 1200 Watt</b> High Power Tone Only Siren Aluminum Type I Control Cabinet Assembly, includes (3) Tone Only Power Amplifiers, ESC2030 Siren Controller, Rotor Oscillator Board and 5A 110/120 VAC Battery Charger ( <b>Batteries Not Included</b> )	<b>\$ 4,040.00</b>
CABVR4	01-1486007-4A	<b>VORTEXR4 1600 Watt</b> High Power Tone Only Siren Aluminum Type I Control Cabinet Assembly, includes (4) Tone Only Power Amplifiers, ESC2030 Siren Controller, Rotor Oscillator Board and 5A 110/120 VAC Battery Charger ( <b>Batteries Not Included</b> )	<b>\$ 4,220.00</b>
N/A	01-1486940-03	<b>WPS4003A</b> - Fully Assembled Aluminum Type II Control Cabinet includes (3) Power Amplifiers, ESC2030 Siren Controller, 10A 110/120 VAC Battery Charger, Rotor Control Module and RDVM1G Digital Voice Option Board (Supports up to 28 Messages for an Additional Charge), No Additional Charge if Using Existing Customer Messages on File (Customer to Verify and Supply Message List to be Used) ( <b>Batteries Not Included</b> )	<b>\$ 7,090.00</b>
N/A	01-1486940-04	<b>WPS4004A</b> - Fully Assembled Aluminum Type II Control Cabinet includes (4) Power Amplifiers, ESC2030 Siren Controller, 10A 110/120 VAC Battery Charger, Rotor Control Module and RDVM1G Digital Voice Option Board (Supports up to 28 Messages for an Additional Charge), No Additional Charge if Using Existing Customer Messages on File (Customer to Verify and Supply Message List to be Used) ( <b>Batteries Not Included</b> )	<b>\$ 7,600.00</b>

## Replacement Parts (cont'd)

Models	Part Number	Description	2019 List Price
<b>Front Panel Upgrade</b>			
FPU2801	01-1483797-01	<b>WPS2801 Front Panel Upgrade</b> , for Type II Control Cabinet, includes (1) Power Amplifier, ESC2030 Siren Controller and 10A AC Battery Charger ( <b>Batteries Not Included</b> )	<b>\$ 2,590.00</b>
FPU2802	01-1483797-02	<b>WPS2802 Front Panel Upgrade</b> , for Type II Control Cabinet, includes (2) Power Amplifiers, ESC2030 Siren Controller and 10A AC Battery Charger ( <b>Batteries Not Included</b> )	<b>\$ 3,190.00</b>
FPU2803	01-1483797-03	<b>WPS2803 Front Panel Upgrade</b> , for Type II Control Cabinet, includes (3) Power Amplifiers, ESC2030 Siren Controller and 10A AC Battery Charger ( <b>Batteries Not Included</b> )	<b>\$ 3,790.00</b>
FPU2804	01-1483797-04	<b>WPS2804 Front Panel Upgrade</b> , for Type II Control Cabinet, includes (4) Power Amplifiers, ESC2030 Siren Controller and 10A AC Battery Charger ( <b>Batteries Not Included</b> )	<b>\$ 4,390.00</b>
FPU2805	01-1483797-05	<b>WPS2805 Front Panel Upgrade</b> , for Type II Control Cabinet, includes (5) Power Amplifiers, ESC2030 Siren Controller and 10A AC Battery Charger ( <b>Batteries Not Included</b> )	<b>\$ 4,990.00</b>
FPU2806	01-1483797-06	<b>WPS2806 Front Panel Upgrade</b> , for Type III Control Cabinet, includes (6) Power Amplifiers, ESC2030 Siren Controller and 10A AC Battery Charger ( <b>Batteries Not Included</b> )	<b>\$ 5,890.00</b>
FPU2807	01-1483797-07	<b>WPS2807 Front Panel Upgrade</b> , for Type III Control Cabinet, includes (7) Power Amplifiers, ESC2030 Siren Controller and 10A AC Battery Charger ( <b>Batteries Not Included</b> )	<b>\$ 6,590.00</b>
FPU2808	01-1483797-08	<b>WPS2808 Front Panel Upgrade</b> , for Type III Control Cabinet, includes (8) Power Amplifiers, ESC2030 Siren Controller and 10A AC Battery Charger ( <b>Batteries Not Included</b> )	<b>\$ 7,090.00</b>
FPU2809	01-1483797-09	<b>WPS2809 Front Panel Upgrade</b> , for Type III Control Cabinet, includes (9) Power Amplifiers, ESC2030 Siren Controller and 10A AC Battery Charger ( <b>Batteries Not Included</b> )	<b>\$ 7,650.00</b>
FPU2810	01-1483797-10	<b>WPS2810 Front Panel Upgrade</b> , for Type III Control Cabinet, includes (10) Power Amplifiers, ESC2030 Siren Controller and 10A AC Battery Charger ( <b>Batteries Not Included</b> )	<b>\$ 8,290.00</b>
FPU4008	01-1484817-08	<b>WPS4008 Front Panel Upgrade</b> , for Type III Control Cabinet, includes (8) Single 400 Watt Output Amplifiers, ESC2030 Siren Controller and 115 VAC 10A 24VDC Output AC Battery Charger ( <b>Batteries Not Included</b> )	<b>\$ 8,100.00</b>
FPU4004	01-1483803-00	<b>WPS4004 Front Panel Upgrade</b> , for Type II Control Cabinet, includes (4) Single 400 Watt Output Amplifiers, ESC2030 Siren Controller and 115 VAC 10A 24VDC Output AC Battery Charger ( <b>Batteries Not Included</b> )	<b>\$ 4,850.00</b>
FPU3000	01-1483585-00	<b>WPS3000 Front Panel Upgrade</b> , for Type II Control Cabinet, includes (4) Four 100 Watt Output Amplifiers, ESC2030 Siren Controller and 115 VAC 10A 24VDC Output AC Battery Charger ( <b>Batteries Not Included</b> )	<b>\$ 5,500.00</b>
RDVM1G	01-146B897-00	<b>Digital Voice Option</b> (Includes Voice Board, 2 Standoffs and 2 #6x32 1/4" Screws) (Supports up to 28 Messages for an Additional Charge) No Additional Charge if Using Customer Messages on File (Customer to Verify and Supply Message List to be Used)	<b>\$ 1,821.00</b>
PLYSUBKT	01-0469835-00	<b>Old Style Polyphaser Substitute Kit</b> , Replaces VHF50HN-B Polyphaser in All Radio Options with IS-50UX-CO Polyphaser (Required for All Siren Cabinets Designed for IS-50UX-C0 Polyphaser Mounting)	<b>N/C</b>
CRATEFPU	03-1016032-00	<b>Front Panel Upgrade Crate</b> 31"H x 27"L X 48" W For Type II/III Only <b>NOTE</b> - We can fit 4 FPU's in one crate, shipping the amps in separate boxes or we can ship 4 FPU's in a crate if the amps are mounted on the panel	<b>\$150.00 NET</b>

## Replacement Parts (cont'd)

Models	Part Number	Description	2019 List Price
<b>Speakers</b>			
SPK2901	01-1484227-01	<b>WPS2901 Fully Assembled Omni-Directional Speaker</b> (Includes (1) Installed 400 Watt Speaker Drivers, 50' Speaker Cable and Pole Top Mounting Bracket)	\$ 4,520.00
SPK2902	01-1484227-02	<b>WPS2902 Fully Assembled Omni-Directional Speaker</b> (Includes (2) Installed 400 Watt Speaker Drivers, 50' Speaker Cable and Pole Top Mounting Bracket)	\$ 6,500.00
SPK2903	01-1484227-03	<b>WPS2903 Fully Assembled Omni-Directional Speaker</b> (Includes (3) Installed 400 Watt Speaker Drivers, 50' Speaker Cable and Pole Top Mounting Bracket)	\$ 8,450.00
SPK2904	01-1484227-04	<b>WPS2904 Fully Assembled Omni-Directional Speaker</b> (Includes (4) Installed 400 Watt Speaker Drivers, 50' Speaker Cable and Pole Top Mounting Bracket)	\$ 10,400.00
SPK2905	01-1484227-05	<b>WPS2905 Fully Assembled Omni-Directional Speaker</b> (Includes (5) Installed 400 Watt Speaker Drivers, 50' Speaker Cable and Pole Top Mounting Bracket)	\$ 12,360.00
SPK2906	01-1484227-06	<b>WPS2906 Fully Assembled Omni-Directional Speaker</b> (Includes (6) Installed 400 Watt Speaker Drivers, 50' Speaker Cable and Pole Top Mounting Bracket)	\$ 15,020.00
SPK2907	01-1484227-07	<b>WPS2907 Fully Assembled Omni-Directional Speaker</b> (Includes (7) Installed 400 Watt Speaker Drivers, 50' Speaker Cable and Pole Top Mounting Bracket)	\$ 17,020.00
SPK2908	01-1484227-08	<b>WPS2908 Fully Assembled Omni-Directional Speaker</b> (Includes (8) Installed 400 Watt Speaker Drivers, 50' Speaker Cable and Pole Top Mounting Bracket)	\$ 19,320.00
SPK2909	01-1484227-09	<b>WPS2909 Fully Assembled Omni-Directional Speaker</b> (Includes (9) Installed 400 Watt Speaker Drivers, 50' Speaker Cable and Pole Top Mounting Bracket)	\$ 21,320.00
SPK2910	01-1484227-10	<b>WPS2910 Fully Assembled Omni-Directional Speaker</b> (Includes (10) Installed 400 Watt Speaker Drivers, 50' Speaker Cable and Pole Top Mounting Bracket)	\$ 23,320.00
SPK4003	01-1481247-03	<b>WPS4003 Speaker Assembly</b> , includes (3) 400 Watt Speaker Drivers, Speaker Rotor, 50' Long Speaker Cable and 50' Long Rotor Cable	\$ 16,810.00
SPK4004	01-1481247-04	<b>WPS4004 Speaker Assembly</b> , includes (4) 400 Watt Speaker Drivers, Speaker Rotor, 50' Long Speaker Cable and 50' Long Rotor Cable	\$ 17,750.00
SPKVR3	01-1483675-03	<b>VortexR3 1200 Watt Speaker Assembly</b> , includes Fully Assembled Vortex Directional Speaker with Three 400 Watt Speaker Drivers, Rotor and 50' Long Speaker/Rotor Cable (Pole Top Bracket Not Included)	\$ 13,550.00
SPKVR4	01-1483675-04	<b>VortexR4 1600 Watt Speaker Assembly</b> , includes Fully Assembled Vortex Directional Speaker with Four 400 Watt Speaker Drivers, Rotor and 50' Long Speaker/Rotor Cable (Pole Top Bracket Not Included)	\$ 14,500.00
SPKHOR	01-1482844-00	<b>Hornet 400 Watt Speaker Assembly</b> , includes Fully Assembled Hornet Directional Speaker with One 400 Watt Speaker Driver, Rotor and 50' Long Speaker/Rotor Cable (Pole Top Bracket Not Included)	\$ 7,500.00
<b>Solar Retrofit Kits</b>			
VSBC280A	02-0463642-00	<b>VORTEX 80 Watt Solar Retrofit</b>	\$ 3,850.00
SBC280A	01-1469500-02	<b>WPS 80 Watt Solar Retrofit Kit</b> (Includes (2) 80 Solar Panels, Mounting Bracket, Solar Regulator and Regulator to Siren Adapter Harness) For All WPS Series Sirens	\$ 4,230.00
SBC28ACA	01-1469500-04	<b>WPS AC and 80 Watt Solar Retrofit</b> (For Conversion from AC Charger Only to AC and Solar Chargers.) Fits All WPS Series Sirens	\$ 5,200.00
SBC480A	01-1469500-05	<b>WPS 160 Watt Solar Option</b> (Includes (4) 80 Watt Panels, (2) Panel Pole Mounting Brackets, Dual Solar Regulator and (2) 45' Long Cables) For All WPS Series Sirens	\$ 8,500.00

## Replacement Parts (cont'd)

Models	Part Number	Description	2019 List Price
<b>Parts</b>			
N/A	01-1483887-01	<b>WPS AC 10A Battery Charger</b> Spare Part w/Adapter Harness 46-0964042-00	\$ 920.00
N/A	01-1484244-01	<b>WPS Solar Regulator Spare Part Kit</b> (NEW Style with Adapter Harness 46-0964042-00 For All WPS Series Sirens	\$ 550.00
N/A	01-1485908-01	<b>Vortex/Omni 110/120 VAC 5 Amp Battery Charger</b> Spare Part Kit w/Adapter Harness 46-0964088-00 (For ESC2020/2030 Siren Controller Vortex/Hornet/Omni Sirens Only)	\$ 520.00
N/A	01-1485908-03	<b>Vortex/Omni 220/240 VAC 5 Amp Battery Charger</b> Spare Part (Used in IPS400/800 with ESC2020/2030 Controller Only)	\$ 520.00
N/A	01-0263642-01	<b>Vortex Solar Regulator</b> Replacement Kit (For use in 2020/2030 Logic Vortex Sirens only) includes Adapter Harness 46-0746519-00	\$ 250.00
N/A	02-0185996-00	<b>ESC2030 Logic Control Board</b>	\$ 975.00
N/A	41-0042747-00	<b>Siren Local Control Keypad</b> for ESC2020/2030 Sirens	\$ 100.00
N/A	02-016A352-00	<b>Amp LED Status Board</b>	\$ 50.00
N/A	01-0282435-00	<b>VortexR/Hornet/Omni-Alert/Firehouse Power Amplifier</b> 1-400 Watt Output Tone Only	\$ 360.00
N/A	01-0485548-00	<b>WPS Power Amplifier</b> 1-400 Watt Output Spare Part Kit	\$ 535.00
N/A	01-0485564-00	<b>IPS Power Amplifier</b> 4-100 Watt Output Spare Part Kit	\$ 560.00
N/A	02-0169118-00	<b>Vortex/Hornet ESC2020/2030 Oscillator Board</b>	\$ 180.00
N/A	02-0169118-01	<b>OA/FHS Series Speaker Connector Interface</b>	\$ 50.00
<b>WPSRRC</b>	01-0266162-00	<b>WPS4000/3000 Rotor Relay Control Module</b>	\$ 400.00
N/A	43-0264009-00	<b>400 Watt Speaker Driver</b>	\$ 965.00
<b>EZPULL</b>	01-0484221-00	<b>WPS2900 EZPull Replacement Speaker Driver Handle/Plate Assembly</b> only (Speaker Driver Not Included)	\$ 265.00
<b>RI2020</b>	01-0418055-04	Narrow Band Radio/Interface for ESC2020/2030 Siren Controller (Specify Receiver or Transceiver and Frequencies when Ordering)	\$ 950.00

# MASS NOTIFICATION PRODUCTS ONLY

## USER DIRECT WARRANTY

### MASS NOTIFICATION PRODUCTS ONLY

Whelen's warranty on Whelen Mass Notification Products is limited to the following:

For a period of 24 months from the date of manufacture, Whelen will repair\* or replace at its option, defective modules, which are manufactured by Whelen Engineering Company, Inc. in their entirety, and are returned by the customer via prepaid freight. Whelen will return repaired modules via prepaid ground transportation if shipping address is within the 48 contiguous states or District of Columbia. Repaired modules shipped outside of the 48 contiguous states or District of Columbia are at customer's expense.

Excluded from warranty consideration is any loss arising from vandalism, tampering, misuse, improper installation, environmental damage or alterations to the product.

A "pass-through" warranty is offered for products manufactured by other companies that are sold with Whelen Mass Notification Products. Typical examples of such products include, but are not limited to: computers, printers, weather data sensors, un-interruptible power supplies, and batteries. Warranties on these products are "pass-through", meaning the equipment warranty will be limited to that offered by the equipment's original manufacturer and that the warranty will exist solely between the manufacturer and end user. Exceptions will be by prior contractual agreement only.

For a three year period following the 24 month warranty, Whelen will repair defective modules, which are manufactured in their entirety by Whelen and are returned to Whelen via prepaid freight for a flat fee. Whelen reserves the right to determine if the unit is repairable. This flat fee is now \$75 per module. This offering is limited to defective modules, exclusive of any loss arising from vandalism, misuse, improper installation, tampering or environment damage. Whelen warrants its repair of defective modules for a period of one year.

Whelen will not be held liable for any incidental or consequential damages, and assumes no responsibility or liability for expenses incurred in the removal and/or reinstallation of products requiring service and/or repair, nor the packaging, handling and shipping to the Factory Repair Center; nor for the handling of products returned from the repair center after service or repair. Failure to use the batteries recommended by Whelen Engineering Company, Inc. will void your warranty.

There are no warranties, expressed or implied, including, but not limited to, any implied merchantability or fitness for a particular use.

Whelen Engineering Company, Inc. reserves the right to discontinue, modify, or upgrade any products of its manufacture with design improvements without prior notice.

This Warranty gives you specific rights and you may also have other rights which vary from state to state.

**WHELEN**<sup>®</sup>  
ENGINEERING COMPANY, INC.

51 Winthrop Road, Chester, CT 06412-0684  
(860) 526-9504 [www.whelen.com](http://www.whelen.com)

\* The only AUTHORIZED WHELEN REPAIR CENTER(S) are predetermined by the Whelen Factory via official listing obtained from Whelen Engineering Company Inc., Chester, CT.

### — GENERAL POLICY INFORMATION FOR ALL WHELEN MASS NOTIFICATION PRODUCTS —

1. Catalog, price list or policy statement possession does not constitute the right to purchase directly from Whelen Engineering Company, Inc. Contact the factory for customer classification and current discount status.
2. Prices are subject to change without prior notice. Price in effect at time of shipment will prevail. Every effort will be made to avoid price revisions prior to void date noted on the Official Price List. Should material cost escalate beyond our control, Whelen Engineering reserves the right to make adjustments deemed necessary.
3. Any product may be discontinued or upgraded with design improvements, without notice.
4. Whelen Engineering Company, Inc. will not be liable for any direct, indirect, consequential or incidental loss or damage arising out of the installation use or inability to use the product selected.
5. Whelen Engineering is not responsible for the selection of appropriate equipment or product type required for a particular application or service.
6. These policies may be amended or changed without notice. All Whelen Engineering customers acknowledge receipt of these policies and accept their terms and conditions by purchasing products covered in the current Whelen Mass Notification Product Literature.
7. Whelen Engineering Company reserves the right to add surcharges to invoices for special taxes that are imposed on Whelen by state governments or other legal entities for our doing business in their jurisdiction. Every effort will be made to provide appropriate notice to the start of such surcharges.
8. Whelen Engineering assumes no responsibility for RF path and propagation.
9. The contents of this Price List are proprietary and confidential and intended for use by Authorized Whelen Distributors and Whelen employees only. Any dissemination or distribution of this Price List, without the written permission of Whelen Engineering Company, Inc. is illegal and prohibited.
10. To order, configure and program certain Whelen Products, the customer may be required, at their cost, to update their computer's hardware and/or operating system to the latest version.
- \* 11. By the purchase of products from Whelen, customer agrees to abide by and be bound to the terms and conditions stated herein, unless a Whelen corporate officer has otherwise agreed in writing. These terms and conditions are exclusive and shall apply in lieu of all other terms and conditions appearing on the customer's purchase order or other customer documentation. Customer agrees that Whelen's acceptance of customer's order or quotation is limited to and governed exclusively by these terms and conditions. Neither Whelen's commencement of performance nor shipment of products shall be deemed to constitute acceptance of any additional or different terms and conditions proposed by customer. Whelen's failure to object to provisions contained in any order or other document of customer shall not be construed as a waiver by Whelen of Whelen's terms and conditions or an acceptance of any terms and conditions of Customer, which are hereby rejected by Whelen. Customer also agrees to and accepts unsolicited faxes and/or emails from Whelen on promotions, literature, etc.
12. Whelen Engineering Company reserves the right to terminate or change status of any current Distributor at any time without notice. Such accounts may be reinstated at the discretion of the Whelen Vice President provided that a Distributorship for the given area is still available.
13. "Whelen Trademarks" are the property of Whelen Engineering Company, Inc. and may be used only as set forth in the "Guidelines for use of Whelen Trademarks" available at www.whelen.com. Unauthorized use of Whelen Trademarks for commercial purposes may constitute trademark infringement and unfair competition in violation of Federal and State laws.
14. Whelen Engineering Company reserves the right to terminate any Whelen Distributor that imports for sale, offers for sale or sells non-Whelen Products that: **(A)** are either copies of, or replacement parts for, genuine "Whelen" products. **(B)** infringe any of the intellectual property rights of "Whelen" in its products, including without limitation any "Whelen" patent, trade secret, copyright, trademark or trade dress; or, **(C)** cause confusion or could reasonably lead the marketplace to believe that the source or origin of such products is "Whelen" or that "Whelen" has approved, endorsed or authorized such products as replacements for genuine "Whelen" products.
15. Whelen In-house Quality Assurance Program is used in all manufactured products. Customer imposed or requested programs will only be used at Whelen Plants when agreed to by an Authorized Corporate Officer and any quotation will reflect the cost of such a program in the pricing and accepted by the customer.

### — ORDERING AND PAYMENT POLICY —

16. Prompt payment terms are based on written agreement only. Contact factory for details. No other terms offered.
17. Net terms are net 30 days. Accounts over 30 days may be charged a finance charge (plus collection fees) on the unpaid balance. Accounts over 45 days will be placed on hold and accounts that reach 60 days will automatically become a cash-in-advance or credit card account. At any time after 60 days, the collection process may begin.
18. Orders from un-established accounts or accounts with no prior approved line of credit will require cash-in-advance or an irrevocable letter of credit.
19. Mastercard™ and Visa™ payments: The following information is required at the time a credit card order is placed: **(1)** Exact full name as shown on credit card. **(2)** Complete account number. **(3)** Expiration date (month and year). **(4)** Bank number on card. **(5)** Billing Address for credit card. **(6)** Your telephone number. Credit card must be issued to the individual or company placing the order.
20. Minimum order is \$50.00 net. Orders of less than \$50.00 net will not be processed.
21. Returned or un-collectible checks will be subject to a \$50.00 handling fee. Any further occurrence will necessitate forfeiture of open account terms.
22. Orders that are emailed, mailed or faxed are acceptable. If a faxed order is also mailed (emailed), or vice-versa, that copy must be marked "Confirmation". Duplicating written orders not marked "Confirmation" or discrepancies is not the responsibility of Whelen Engineering Company, Inc. Returns due to discrepancies or duplication are subject to a restocking charge. Verbal orders are not accepted. Customers can fax orders to 860.526.4784 or email orders to iowsales@whelen.com.
23. An order acknowledgement is faxed or emailed for each order. It is the customers' responsibility to check each order for accuracy and notify Whelen immediately of discrepancies. If no response is received from the customer, said customers will accept the order as entered. This includes, but is not limited to, product, pricing and schedule dates.

### — MATERIAL RETURN, EXCHANGES AND CANCELLATIONS POLICIES —

24. All claims must be filed by the customer within 10 days of receipt of shipment. File claims for damage with the carrier and claims for shortage with Whelen.
25. Custom designs, special orders, green LED products and 24 VDC models are non-cancelable and non-returnable.
26. Plastic domes and lenses are not warranted or returnable for credit or exchange.
27. Order cancellation must be faxed with all pertinent information provided. Verbal cancellations are not acceptable. An acknowledgement of the cancellation will be faxed back, otherwise standard restocking fee will apply. Restocking charges will apply for items which have already been packaged for shipment.
28. Material returned for credit or exchange must have prior written approval. Contact factory for a return authorization form. Such material will be subject to acceptance inspection upon return, and to a minimum 25% restocking charge (\$30.00 minimum fee required). Product must be in current production and less than six months old from date of invoice.

### — FREIGHT POLICIES —

29. Freight is F.O.B. Chester, CT. For freight shipped UPS, all charges will be added to invoice. All other shipping methods will be forwarded "freight collect" or prepaid and added to invoice.
30. For "Prepay and Add" requests for truck or air freight routing, an additional administrative and handling charge will be included in the freight invoice.
31. Split shipments will be at Whelen's discretion unless otherwise specified at the time of order placement.
32. Drop shipments to other than the ordering customer's address are at the discretion of Whelen Engineering Company, Inc. and must have prior approval. Whelen reserves the right to add additional charges for any special order processing, handling or shipping.
33. Shipments to locations outside of the United States will accrue a minimum of a \$150.00 processing fee. Customers are urged to contact the factory for a quote prior to entering any orders that must ship to locations outside of the United States.

### — WARRANTY —

34. A factory direct warranty exists for all products manufactured by Whelen Engineering Company, Inc. A copy of this warranty policy may be found on-line at www.whelen.com. These official Whelen warranties are in lieu of all other warranties, expressed or implied.

### — EFFECTIVE 07/01/14, REPLACES ALL PREVIOUSLY PUBLISHED DISTRIBUTOR/OEM POLICIES —



**WHELEN**<sup>®</sup>  
ENGINEERING COMPANY, INC.  
51 Winthrop Road  
Chester, Connecticut 06412-1036  
(860) 526-9504  
iowsales@whelen.com