



# Synology VisualStation User's Guide

# Table of Contents

## Chapter 1: Introduction

## Chapter 2: Getting Started with Synology VisualStation

Setting up VisualStation .....	4
Managing Configurations with Surveillance Station .....	4
Getting to Know VisualStation .....	5

## Chapter 3: Operating VisualStation

Live View .....	6
Timeline .....	8
Management .....	11
Options .....	12

## Chapter 4: Troubleshooting

# Introduction

Thank you for purchasing Synology VisualStation. VisualStation is a live-view solution designed to supplement your Surveillance Station configuration. When paired with a Synology server, VisualStation allows you to accomplish the following tasks:

## Monitor Real-time Feeds with Live View

VisualStation's Live View feature allows you to monitor real-time video feeds from IP cameras that are paired with your Synology server, without the need to constantly run a computer. You can adjust camera feeds with PTZ (pan, tilt, and zoom) controls, or capture snapshots and save them to a USB drive. Moreover, camera feeds can be arranged in layouts and customized depending on your individual environment and surveillance needs.

For more information, please refer to "Live View" on page 6.

## Play Recordings with Timeline

The timeline feature allows you to play back recordings that were captured with IP cameras and stored on your Synology server, providing options to search for recordings based on camera or date. Recordings that were captured at different times or by different cameras can be watched simultaneously, allowing you to easily compare footage.

For more information, please refer to "Timeline" on page 8.

## Manage Recordings and System Logs

VisualStation allows you to manage recordings and system logs. Recording footage can be played back, downloaded to USB device, or locked to ensure important footage is not accidentally deleted.

For more information, please refer to "Management" on page 11.

### Online Resources

Click on the links to obtain Synology's online resources.

- **Knowledge Base:** [http://www.synology.com/support/knowledge\\_base.php](http://www.synology.com/support/knowledge_base.php)
- **Forum:** [forum.synology.com](http://forum.synology.com)
- **Download Center:** [www.synology.com/support/download.php](http://www.synology.com/support/download.php)
- **Technical Support:** [www.synology.com/support/support\\_form.php](http://www.synology.com/support/support_form.php)

# Getting Started with Synology VisualStation

## Setting up VisualStation

---

This guide assumes that your Synology VisualStation has been connected to the local network and successfully paired with your Synology server. If you have not yet completed hardware and software setup, please refer to the *Quick Installation Guide* that came with your Synology VisualStation before proceeding.

## Managing Configurations with Surveillance Station

---

Synology VisualStation allows you to monitor IP camera feeds without constantly running a computer. However, basic configurations must be managed from a computer with access to Surveillance Station, such as configuring IP cameras or customizing live view layouts. This section explains how to manage these basic configurations.

### Accessing Surveillance Station

First, in order to manage VisualStation configurations, you must have access to Surveillance Station. To access Surveillance Station, please log into Synology DiskStation Manager (DSM) using an account belonging to the **administrators** group. Then go to **Main Menu > Surveillance Station**.

**What's DSM or Surveillance Station?** If you are curious about DSM or Surveillance Station, please refer to the *Synology DiskStation User's Guide* available at [www.synology.com](http://www.synology.com).

**Need more information?** Please refer to Surveillance Station Help for a detailed explanation regarding how to manage VisualStation settings with Surveillance Station. To view Help, open Surveillance Station, click the figure icon in the upper-right corner, and click **Help**.

### Editing IP Camera Settings

VisualStation can display video feeds from IP cameras on the local network. However, IP cameras must be configured with Surveillance Station first. If you wish to edit IP camera settings, open Surveillance Station and go to **Management > Camera > Camera List**.

### Customizing Live View Layouts

Camera feeds on the Live View page can be arranged in layouts and customized from Surveillance Station. To customize or create live view layouts, please do the following:

- 1 Open Surveillance Station.
- 2 Go to **Management > Device > VisualStation**.
- 3 Click **Edit**.
- 4 Select **Edit Live View**.

### Editing Device and System Settings

Device information and system settings of VisualStation can be viewed and edited from Surveillance Station. To see device information and system settings, please do the following:

- 1 Open Surveillance Station.
- 2 Go to **Management > Device > VisualStation**.
- 3 Click **Edit**.
- 4 Select **Edit Settings**.

## Getting to Know VisualStation

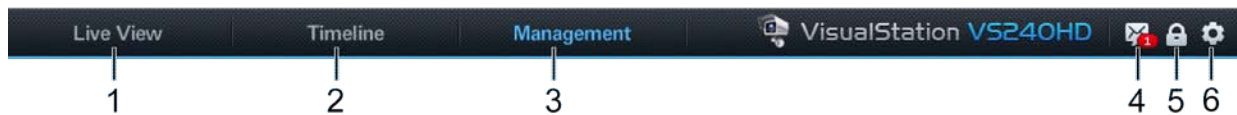
This section explains the basics of navigating and operating Synology VisualStation.

### Using a Mouse

Once VisualStation is powered on and booted up, the VisualStation user interface appears on the HDMI display connected to it. In order to navigate and manipulate this user interface, you can plug a mouse into one of the USB ports located on the back panel of VisualStation.

### Navigating

At the top of the user interface, you should see a taskbar. Use this taskbar to navigate between pages. See the graphic and explanation below:



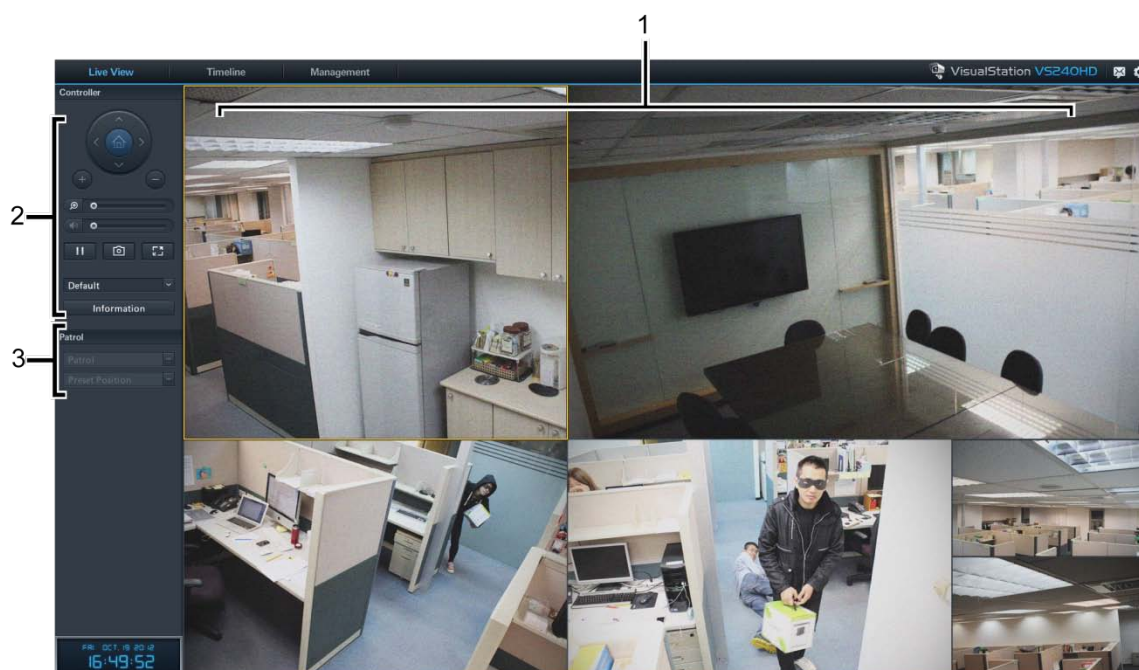
Item	Name	Function
1.	<b>Live View</b>	Go to the Live View tab.
2.	<b>Timeline</b>	Go to the Timeline tab.
3.	<b>Management</b>	Go to the Management tab.
4.	<b>Notifications</b>	View notifications, such as system messages, warnings, etc.
5.	<b>Lock</b>	Click to lock your VisualStation to the currently paired Synology server in order to prevent unauthorized access.
6.	<b>Options</b>	This menu includes the following: 1. <b>Information:</b> View system information: model name, serial number, IP address, fan status, paired server info. 2. <b>Network:</b> Edit device name and network configurations. 3. <b>Firmware:</b> Perform firmware upgrade. 4. <b>Shutdown:</b> Power off VisualStation.

# Operating VisualStation

This chapter explains how to use the main features of Synology VisualStation, including monitoring camera feeds with Live View; playing back recordings with timeline; managing recording files and system logs with Management; viewing system information and updating firmware with Options.

## Live View

On the Live View page, you can monitor real-time video feeds from IP cameras that are paired with your Synology server, capture snapshots, or adjust camera feeds with pan, tilt, and zoom (PTZ) controls. Camera feeds can be arranged in layouts and customized depending on your individual surveillance needs.



Item	Name	Function
1.	Live View Layout	Displays video feeds from IP cameras. For more details, please see “Live View Layout” below.
2.	Controller Panel	Manipulate camera feeds with PTZ controls, digital zoom, or take snapshots. For more details, please see “Controller Panel” below.
3.	Patrol Panel	Allows you to switch patrol settings. For more details, please see “Patrol Controls” below.

### Live View Layout

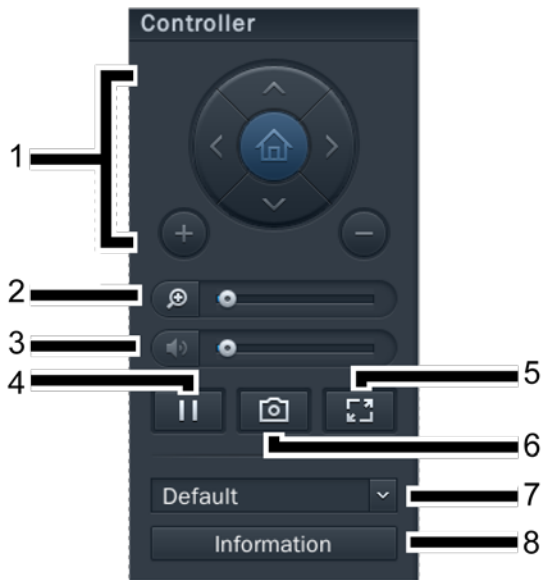
IP camera feeds are displayed here. Layout of camera feeds can be customized using Surveillance Station. For more details, please see “Customizing Live View Layouts” on page 4.

Clicking a camera feed selects it. Once a camera feed is selected, you can use controls located on the left panel to manipulate viewing options. The currently selected camera feed is highlighted with a yellow frame.

Double-clicking any camera feed enlarges the image of that feed. Double-clicking again returns to the normal view.

## Controller Panel

This section explains the Controller panel, which provides options to manipulate camera feeds on the Live View page.



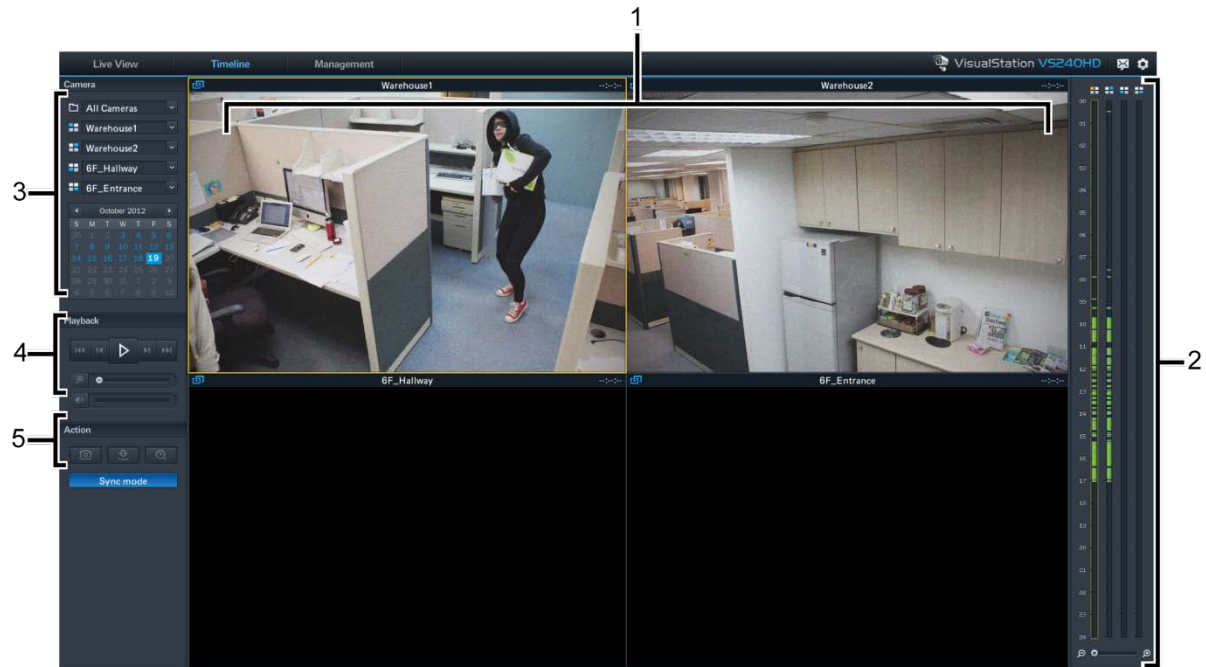
Item	Name	Function
1.	PTZ Controls	Adjust angle and zoom of cameras that support PTZ (pan, tilt, zoom) controls. These controls are grayed out when the selected camera does not support PTZ controls.
		Arrow buttons adjust the angle of the currently selected camera.
		Home button returns the selected camera to its default position.
		Plus and minus buttons adjust the mechanical zoom of the selected camera.
2.	Digital Zoom	Drag to adjust digital zoom of the selected camera. Click the image and drag to pan.
3.	Volume	Drag to adjust the volume of the selected camera's audio output. This slider is grayed out when the selected camera does not support audio output.
4.	Pause/Resume	Pause or resume the selected camera feed.
5.	Full Screen	Enters full screen mode, hiding the Taskbar and Controller panels. Right-click to exit.
6.	Snapshot	Saves a still snapshot of the selected camera feed. A USB drive must be connected to VisualStation in order to save snapshots.
7.	Live View Layout Menu	Switch Live View layouts. For more details, please see "Customizing Live View Layouts" on page 4.
8.	Information	Click to show or hide the status of each camera (name, enabled, disable, or recording).

## Patrol Controls

Patrols or preset positions can be selected from the drop-down menus located on this panel. For more details, please refer to Surveillance Station Help.

## Timeline

On the Timeline page, you can play back recordings that were captured with IP cameras and stored on your Synology server. Recordings can be filtered based on camera or date. In addition, footage recorded at different times or with different cameras can be watched simultaneously, allowing you to easily compare captured recordings.



Item	Name	Function
1.	Recordings Viewer	Video footage recorded with IP cameras is displayed here. Please see "Recording Viewer" below.
2.	Timeline	Search for recordings according to time captured. Please see "Timeline" below.
3.	Camera Panel	Play back recordings captured with specific cameras. Please see "Camera Panel" below.
4.	Playback Controls	Controls for recordings playback, such as play, pause, digital zoom, etc. Please see "Playback Controls" below.
5.	Action Panel	Enable sync mode, take snapshots, or download recordings to USB drive. Please see "Action Panel" below.

## Recording Viewer

Recordings from IP cameras can be displayed here.

Clicking a camera feed selects it. Once a camera feed is selected, you can use controls located on the left to manipulate viewing options. The currently selected camera feed is highlighted with a yellow frame.

Double-clicking any camera feed enlarges the image of that feed. Double-clicking again returns to the normal layout.



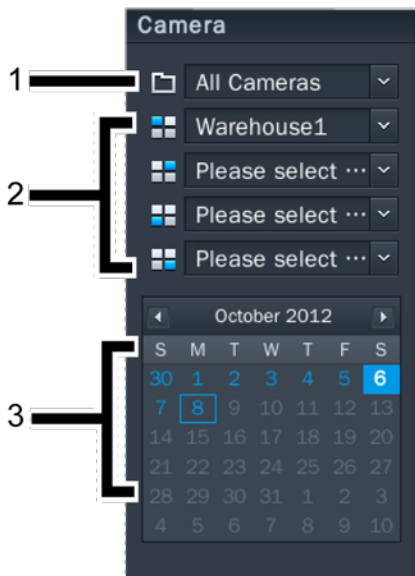
## Timeline

The timeline displays the times when recordings were captured, allowing you to quickly search for recordings captured at specific times. There are four columns, each representing one camera feed. Green sections represent recordings.

On the timeline, clicking a specific time starts playing the first recording captured after that time. *For example, if you select Camera A and click 08:00:00, but no recordings were captured until 08:34:00, then recordings will be played back starting from 08:34:00.*

## Camera Panel

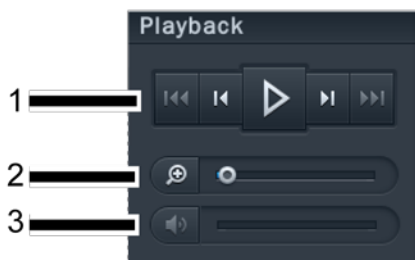
Use this panel to select cameras. Recordings captured with the selected cameras can be played back. Before playing back any recordings on the Timeline page, you must choose at least one camera.



Item	Name	Function
1.	Camera Group	Filter cameras based on camera group.
2.	Camera	Choose to play back recordings captured by specific cameras. You can select up to four cameras. Each drop-down menu corresponds to a position on the recording viewer layout and timeline.
3.	Calendar	Choose to play back recordings captured on specific dates.

## Playback Controls

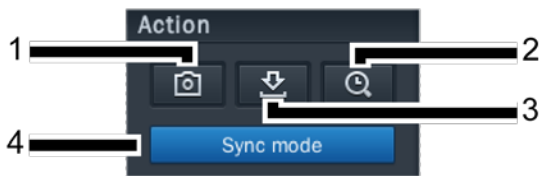
Use this panel to control the playback of selected camera feeds.



Item	Name	Function
1.	Play, Fast Forward, Next	Control recording playback with these buttons, including play/pause, fast forward/slow motion, next/previous, and next frame/previous frame.
2.	Digital Zoom	Drag to adjust digital zoom of the selected camera. Click the image and drag to pan.
3.	Volume	Drag to adjust the sound volume of the selected camera. This slider is grayed out when the selected camera does not support audio output.

## Action Panel

You can use these controls to perform various actions.



Item	Name	Function
1.	Snapshot	Saves a still snapshot of the selected camera feed. A USB drive must be connected to VisualStation in order to save snapshots.
2.	Seek	Search for recordings from a specific time. After clicking the Seek button, you can enter a time, and VisualStation will begin playing back recordings captured after the selected time. <i>For example, you click seek and enter 07:00:00, but no recordings were captured until 07:15:00. In this case, recordings will start playing back from 07:15:00.</i>
3.	Download	Saves a copy of the currently viewed recording to a USB drive. To save recording files, you must first connect a USB drive to your VisualStation.
4.	Sync Mode	Click this button to enable/disable Sync Mode. When Sync Mode is enabled, recordings captured at the same time are played back simultaneously. <i>For example, if you select 07:15:00, recordings captured by all selected cameras at 07:15:00 will be played back simultaneously.</i> When Sync Mode is disabled, you can play back and compare recordings captured at different times by selected cameras. <i>For example, you can play back recordings captured by Camera A at 07:15:00, while playing back recordings captured by Camera B at 03:45:00.</i>

## Management

---

On the **Management** page, you can manage recordings and system logs. Recording files can be played back, downloaded to USB device, or locked to ensure important recordings are not accidentally deleted. This page includes two sections: **Recording List** and **Log**.

### Recording List

Recording List displays a list of footage recorded with IP cameras. Recordings are saved on the Synology server that is paired with your VisualStation. Recordings can be filtered according to camera, recording mode, start time, file size, or video format. Additionally, you can further define what recordings are displayed by clicking the button marked **Filter** and entering filter criteria.

The Recording List is located under **Management > Recording List**.

#### Backing up Recordings

In order to perform backup or view recordings on another device, you might wish to download recordings. To download recordings please do the following:

- 1 Connect a USB drive to VisualStation.
- 2 Select which recording you wish to download.
- 3 Click the **Download** button.

#### Locking Recordings

Important recordings can be locked in order to ensure they are not accidentally deleted when the system wipes old files. To lock recordings please do the following:

- 1 Select which recording you wish to lock.
- 2 Go to **Lock > Lock selected**.

### Log

The Log page shows information related to system and camera status, such as errors, warnings, or other messages.

The Log page is located under **Management > System > Log**.

You can refine the information displayed on the Log page by clicking **Filter** and defining filter criteria, such as recording type, related camera, or time.

#### Backing up Logs

Log information can be downloaded to a USB drive, if you wish to perform backup. To download logs please do the following:

- 1 Connect a USB drive to VisualStation.
- 2 Click the button marked **Download**.

## Options

Options, including device information, network settings, firmware upgrade, and shutdown can be accessed by clicking the gear icon located on the taskbar as illustrated below.



### Information

The information page displays device information related to your VisualStation, including model name, serial number, IP address, thermal status, as well as the device name and IP address of the paired Synology server.

Thermal status is indicated as follows:

Item	Light	Status
Thermal Status	Green	Normal
	Yellow	Error detected

### Network

The device name and network configurations of VisualStation can be viewed and edited on this page.

### Firmware

VisualStation firmware can be upgraded on this page. To upgrade firmware, please do the following:

- 1 Download the latest firmware update from [www.synology.com](http://www.synology.com).
- 2 Copy the firmware file to a USB drive.
- 3 Connect the USB drive to your VisualStation.
- 4 Go to Options (the gear icon).
- 5 Select **Firmware**.
- 6 Click **Scan**. The system should automatically detect the newest firmware file on the USB drive.
- 7 Click **Upgrade** to start.

When firmware upgrade is complete, VisualStation will automatically power off and restart.

### Shutdown

This option shuts down VisualStation. If this button is unavailable, VisualStation can be shut down by pressing and holding the Power button located on the front panel of VisualStation.

# Troubleshooting

This chapter provides solutions to common issues you might encounter while using your Synology VisualStation.

## Why can't VisualStation be paired with my Synology server?

In order to simplify management and increase security, VisualStation can be “locked” to a Synology server, which keeps it from being paired with another Synology server. In order to pair your VisualStation with a new Synology server, please make sure it is “unlocked.”

To check the lock status of VisualStation, please find the lock LED indicator on the front panel and check the graph below:

Item	Light	Status
Lock LED Indicator	Off	Unlocked
	Green	Locked

### Locking or Unlocking VisualStation

If you wish to lock or unlock VisualStation, click the lock button located on the task bar. Then select the option marked **Lock me** and click **OK** to save.

## Why isn't VisualStation detected on my local network?

If you are experiencing network problems, please try the below suggestions:

- Make sure your network router is working properly. If you do not know how to change the settings of your network equipment, such as DSL or cable routers, please contact the manufacturer directly. If you are using equipment provided by an internet service provider, please call them for more details.
- Turn off or unplug all devices on your network. Make sure all lights on modems or routers are off. Wait one full minute before turning on devices again. Certain VOIP modems might have batteries. Remember to remove any batteries in order to completely turn off the modem.
- Restore default settings on your VisualStation. To restore default settings, find the Reset button located on the back panel of your VisualStation, then press and hold until you hear a beep sounds.
- Confirm network connection by connecting to Surveillance Station using a computer on the same network. If you cannot connect to the Surveillance Station, then you may need to check the settings of your Synology server.
- Update the firmware and drivers of all network devices, including routers or modems. Contact device manufacturers for more details.
- If your network setup includes multiple switches or routers, try to isolate the problem by connecting your VisualStation and Synology server to the same switch or router, or try connecting both to a different network.

## Why do I see the warning messages “Unpaired,” “Disabled,” or “Disconnected?”

Please see the graph below for an explanation of each message.

Message	Explanation
Unpaired	VisualStation is not paired with a Synology server. For instructions regarding pairing VisualStation, please see the <i>Quick Installation Guide</i> that came with your VisualStation or check Surveillance Station help.
Disabled	VisualStation is paired, but has been disabled through Surveillance Station. To enable VisualStation, open Surveillance Station, go to <b>Management &gt; Device &gt; VisualStation</b> , and click <b>Enable</b> .

Message	Explanation
Disconnected	VisualStation is disconnected from the network. Check all connections.

## Why is the frame rate of camera feeds low?

If the frame rate of camera feeds on the Live View page is lower than normal, please try the below suggestions.

- Check the bandwidth of your network equipment, such as routers or switches. You might need to upgrade your equipment in order to increase network bandwidth and handle camera video feeds.
- Lower image resolution of your cameras. To edit the resolution of cameras, please do the following:
  - 1 Open **Surveillance Station**.
  - 2 Go to the **Management** tab.
  - 3 Go to **Camera List**.
  - 4 Select a camera from the list.
  - 5 Click **Edit** and select **Edit Camera**.
  - 6 Go to the **Video** tab.

## Why can't I save snapshots or download recordings?

Snapshots, recordings, and system logs can be saved to a USB drive. In order to save any of these files, please make sure a USB drive is connected to your VisualStation.

**SYNOLOGY, INC.**  
**END USER LICENSE AGREEMENT**

IMPORTANT—READ CAREFULLY: THIS END USER LICENSE AGREEMENT ("EULA") IS A LEGAL AGREEMENT BETWEEN YOU (EITHER AN INDIVIDUAL OR A SINGLE ENTITY) AND SYNOLOGY, INC. AND ITS AFFILIATES, INCLUDING SYNOLOGY AMERICAN CORP AND SYNOLOGY UK LTD., (COLLECTIVELY, "SYNOLOGY") FOR ANY SYNOLOGY SOFTWARE, TOGETHER WITH ANY OTHER ASSOCIATED FIRMWARE, MEDIA, PRINTED MATERIALS AND "ONLINE" OR ELECTRONIC DOCUMENTATION (COLLECTIVELY, THE "SOFTWARE") AVAILABLE FOR DOWNLOAD AT [WWW.SYNOLOGY.COM](http://WWW.SYNOLOGY.COM) OR PROVIDED WITH OR INSTALLED ON A SYNOLOGY PRODUCT (THE "PRODUCT").

YOU AGREE TO BE BOUND BY THE TERMS OF THIS EULA BY OPENING THE PACKAGE CONTAINING THE SOFTWARE, INSTALLING THE SOFTWARE NOT OTHERWISE PRE-INSTALLED BY SYNOLOGY ON A PRODUCT OR OTHERWISE USING A PRODUCT THAT INCLUDES PRE-INSTALLED SOFTWARE. IF YOU DO NOT AGREE TO THE TERMS OF THIS EULA, DO NOT OPEN THE BOX CONTAINING THE PRODUCT, INSTALL THE SOFTWARE OR USE THE PRODUCT CONTAINING THE SOFTWARE. INSTEAD, YOU MAY RETURN THE PRODUCT TO THE RESELLER WHERE YOU PURCHASED IT FOR A REFUND IN ACCORDANCE WITH THE RESELLER'S APPLICABLE RETURN POLICY.

**Section 1. Limited Software License.** Subject to the terms and conditions of this EULA, Synology grants you a limited, non-exclusive, non-transferable, personal license to install, run and use one copy of the Software on the Product solely in connection with your authorized use of the Product.

**Section 2. Documentation.** You may make and use a reasonable number of copies of any documentation provided with the Software; provided, that such copies will only be used for internal business purposes and are not to be republished or redistributed (either in hard copy or electronic form) to any third party.

**Section 3. Backup.** You may make a reasonable number of copies of the Software for backup and archival purposes.

**Section 4. Updates.** Any software provided to you by Synology or made available on the Synology web site at [www.synology.com](http://www.synology.com) ("Web Site") that updates or supplements the original Software is governed by this EULA unless separate license terms are provided with such updates or supplements, in which case, such separate terms will govern.

**Section 5. License Limitations.** The license set forth in Section 1 applies only to the extent you have ordered and paid for the Product and it states the entirety of your rights with respect to the Software. Synology reserves all rights not expressly granted to you in this EULA. Without limiting the foregoing, you will not, and you will not authorize or permit any third party to: (a) use the Software for any purpose other than in connection with the Product; (b) license, distribute, lease, rent, lend, transfer, assign or otherwise dispose of the Software or use the Software in any commercial hosted or service bureau environment; (c) reverse engineer, decompile, disassemble or attempt to discover the source code for or any trade secrets related to the Software, except and only to the extent that such activity is expressly permitted by applicable law notwithstanding this limitation; (d) adapt, modify, alter, translate or create any derivative works of the Software; (e) remove, alter or obscure any copyright notice or other proprietary rights notice on the Product; or (f) circumvent or attempt to circumvent any methods employed by Synology to control access to the components, features or functions of the Product or Software.

**Section 6. Open Source.** The Software may contain components licensed to Synology under the GNU General Public License ("GPL Components"), currently available at <http://www.gnu.org/licenses/gpl.html>. The terms of the GPL will control solely with respect to the GPL Components to the extent that this EULA conflicts with the requirements of the GPL with respect to your use of the GPL Components, and, in such event, you agree to be bound by the GPL with respect to your use of such components.

**Section 7. Audit.** Synology will have the right to audit your compliance with the terms of this EULA. You agree to grant access to Synology to facilities, equipment, books, records

and documents and to otherwise reasonably cooperate with Synology in order to facilitate any such audit.

**Section 8. Ownership.** The Software is valuable property of Synology and its licensors and is protected by copyright and other intellectual property laws and treaties. Synology or its licensors own all right, title and interest in and to the Software and all copyright and other intellectual property rights in the Software.

**Section 9. Limited Warranty.** Synology warrants that for a period of ninety (90) days after either your (a) installation of the Software on Products that do not include pre-installed Software or (b) use of a Product that includes pre-installed Software, as applicable, (the "Warranty Period"), the Software will substantially conform to Synology's published specifications for the Software, if any, or otherwise set forth on the Web Site. Synology will use commercially reasonable efforts to, in Synology's sole discretion, either correct any such nonconformity in the Software or replace any Software that fails to comply with the foregoing warranty, provided that you give Synology written notice of such noncompliance within the Warranty Period. The foregoing warranty does not apply to any noncompliance resulting from any: (w) use, reproduction, distribution or disclosure not in accordance with this EULA; (x) any customization, modification or other alteration of the Software by anyone other than Synology; (y) combination of the Software with any product, services or other items provided by anyone other than Synology; or (z) your failure to comply with this EULA.

**Section 10. Support.** During the Warranty Period, Synology will make available to you the support services. Following the expiration of the applicable Warranty Period, support for Software may be available from Synology upon written request.

**Section 11. Disclaimer of Warranties.** EXCEPT AS EXPRESSLY SET FORTH ABOVE, SYNOLOGY AND ITS SUPPLIERS PROVIDE THE SOFTWARE "AS IS" AND WITH ALL FAULTS. SYNOLOGY AND ITS SUPPLIERS HEREBY DISCLAIM ALL OTHER WARRANTIES, EXPRESS, IMPLIED OR STATUTORY, ARISING BY LAW OR OTHERWISE, INCLUDING BUT NOT LIMITED TO ANY IMPLIED WARRANTIES OF MERCHANTABILITY, FITNESS FOR A PARTICULAR PURPOSE OR USE, TITLE AND NONINFRINGEMENT, WITH REGARD TO THE SOFTWARE. WITHOUT LIMITING THE FOREGOING, SYNOLOGY DOES NOT WARRANT THAT THE SOFTWARE WILL BE FREE OF BUGS, ERRORS, VIRUSES OR OTHER DEFECTS.

**Section 12. Disclaimer of Certain Damages.** IN NO EVENT WILL SYNOLOGY OR ITS LICENSORS BE LIABLE FOR THE COST OF COVER OR FOR ANY INCIDENTAL, INDIRECT, SPECIAL, PUNITIVE, CONSEQUENTIAL OR SIMILAR DAMAGES OR LIABILITIES WHATSOEVER (INCLUDING, BUT NOT LIMITED TO LOSS OF DATA, INFORMATION, REVENUE, PROFIT OR BUSINESS) ARISING OUT OF OR RELATING TO THE USE OR

INABILITY TO USE THE SOFTWARE OR OTHERWISE UNDER OR IN CONNECTION WITH THIS EULA OR THE SOFTWARE, WHETHER BASED ON CONTRACT, TORT (INCLUDING NEGLIGENCE), STRICT LIABILITY OR OTHER THEORY EVEN IF SYNOLOGY HAS BEEN ADVISED OF THE POSSIBILITY OF SUCH DAMAGES.

**Section 13. Limitation of Liability.** SYNOLOGY'S AND ITS SUPPLIERS' LIABILITY ARISING OUT OF OR RELATING TO THE USE OR INABILITY TO USE THE SOFTWARE OR OTHERWISE UNDER OR IN CONNECTION WITH THIS EULA OR THE SOFTWARE IS LIMITED TO THE AMOUNT ACTUALLY PAID BY YOU FOR THE PRODUCT REGARDLESS OF THE AMOUNT OF DAMAGES YOU MAY INCUR AND WHETHER BASED ON CONTRACT, TORT (INCLUDING NEGLIGENCE), STRICT LIABILITY OR OTHER THEORY. The foregoing disclaimer of warranties, disclaimer of certain damages and limitation of liability will apply to the maximum extent permitted by applicable law. The laws of some states/jurisdictions do not allow the exclusion of implied warranties or the exclusion or limitation of certain damages. To the extent that those laws apply to this EULA, the exclusions and limitations set forth above may not apply to you.

**Section 14. Export Restrictions.** You acknowledge that the Software is subject to U.S. export restrictions. You agree to comply with all applicable laws and regulations that apply to the Software, including without limitation the U.S. Export Administration Regulations.

**Section 15. U.S. Government License Rights.** All Software provided to the U.S. Government is provided with the commercial license rights and restrictions described in this EULA. By installing, copying or using the Software, the U.S. Government agrees that the Software is "commercial computer software" or "commercial computer software documentation" within the meaning of FAR Part 12.

**Section 16. Termination.** Without prejudice to any other rights, Synology may terminate this EULA if you do not abide by the terms and conditions contained herein. In such event, you must cease use of the Software and destroy all copies of the Software and all of its component parts.

**Section 17. Assignment.** You may not transfer or assign your rights under this EULA to any third party. Any such transfer or assignment in violation of the foregoing restriction will be void.

**Section 18. Applicable Law.** Unless expressly prohibited by local law, this EULA is governed by the laws of the State of Washington, U.S.A. without regard to any conflict of law principles to the contrary. The 1980 U.N. Convention on Contracts for the International Sale of Goods or any successor thereto does not apply.

**Section 19. Dispute Resolution.** Any dispute, controversy or claim arising out of or relating to this Warranty, the Software or services provided by Synology with respect to the Software or the relationship between you and Synology

will be resolved exclusively and finally by arbitration under the current commercial rules of the American Arbitration Association if you reside in the United States, except as otherwise provided below. In such cases, the arbitration will be conducted before a single arbitrator, and will be limited solely to the dispute between you and Synology. The arbitration, or any portion of it, will not be consolidated with any other arbitration and will not be conducted on a class-wide or class action basis. The arbitration shall be held in King County, Washington, U.S.A. by submission of documents, by telephone, online or in person as determined by the arbitrator at the request of the parties. The prevailing party in any arbitration or legal action occurring within the United States or otherwise shall receive all costs and reasonable attorneys' fees, including any arbitration fee paid by the prevailing party. Any decision rendered in such arbitration proceedings will be final and binding on the parties, and judgment may be entered thereon in any court of competent jurisdiction. You understand that, in the absence of this provision, you would have had a right to litigate any such dispute, controversy or claim in a court, including the right to litigate claims on a class-wide or class-action basis, and you expressly and knowingly waives those rights and agrees to resolve any disputes through binding arbitration in accordance with the provisions of this Section 19. If you do not reside within the United States, any dispute, controversy or claim described in this Section shall be finally resolved by arbitration conducted by three neutral arbitrators in accordance with the procedures of the R.O.C. Arbitration Law and related enforcement rules. The arbitration shall take place in Taipei, Taiwan, R.O.C., and the arbitration proceedings shall be conducted in English or, if both parties so agree, in Mandarin Chinese. The arbitration award shall be final and binding on the parties and may be enforced in any court having jurisdiction. Nothing in this Section shall be deemed to prohibit or restrict Synology from seeking injunctive relief or seeking such other rights and remedies as it may have at law or equity for any actual or threatened breach of any provision of this EULA relating to Synology's intellectual property rights.

**Section 20. Attorneys' Fees.** In any arbitration, mediation, or other legal action or proceeding to enforce rights or remedies under this EULA, the prevailing party will be entitled to recover, in addition to any other relief to which it may be entitled, costs and reasonable attorneys' fees.

**Section 21. Severability.** If any provision of this EULA is held by a court of competent jurisdiction to be invalid, illegal, or unenforceable, the remainder of this EULA will remain in full force and effect.

**Section 22. Entire Agreement.** This EULA sets forth the entire agreement of Synology and you with respect to the Software and the subject matter hereof and supersedes all prior and contemporaneous understandings and agreements whether written or oral. No amendment, modification or waiver of any of the provisions of this EULA will be valid unless set forth in a written instrument signed by the party to be bound thereby.



**SYNOLOGY, INC.**  
**LIMITED PRODUCT WARRANTY**

THIS LIMITED WARRANTY ("WARRANTY") APPLIES TO THE PRODUCTS (AS DEFINED BELOW) OF SYNOLOGY, INC. AND ITS AFFILIATES, INCLUDING SYNOLOGY AMERICA CORP AND SYNOLOGY UK LTD., (COLLECTIVELY, "SYNOLOGY"). YOU ACCEPT AND AGREE TO BE BOUND BY THE TERMS OF THIS WARRANTY BY OPENING THE PACKAGE CONTAINING AND/OR USING THE PRODUCT. IF YOU DO NOT AGREE TO THE TERMS OF THIS WARRANTY, DO NOT USE THE PRODUCT. INSTEAD, YOU MAY RETURN THE PRODUCT TO THE RESELLER WHERE YOU PURCHASED IT FOR A REFUND IN ACCORDANCE WITH THE RESELLER'S APPLICABLE RETURN POLICY.

**Section 1. Definitions.** (a) "Category I Product" means Synology product models RS810+, RS810RP+ and RX410. (b) "Category II Product" means Synology product models RS10613xs+, RS3413xs+, RS3412xs, RS3412RPxs, RS2212+, RS2212RP+, RS812+, RS812RP+, DS2413+, DS713+, DS3612xs, DS1812+, DS1512+, DS712+, DS3611xs, DS2411+, DS1511+, DS1010+, DS710+, DS509+, DS508, RS812, RS212, RS3411xs, RS3411RPxs, RS2211+, RS2211RP+, RS411, RS409RP+, RS409+, RS409, RS408-RP, RS408, RS407, RX1213sas, RX1211, RX1211RP, DX513, DX1211, DX510, DX5, RX4, VS240HD, and RAM Module (1GB/2GB/4GB/8GB). (c) "Category III Product" means all other Synology product models purchased by Customer after March 1, 2008. (d) "Category IV Product" means all other Synology product models purchased by Customer before February 29, 2008. (e) "Customer" means the original person or entity purchasing the Product from Synology or an authorized Synology distributor or reseller. (f) "Product" means a Category I Product, Category II Product, Category III Product, or Category IV Product and any hardware incorporated into the product by Synology and any accompanying documentation. (g) "Software" means the Synology proprietary software that accompanies the Product when purchased by Customer, is downloaded by Customer at the Web Site, or is pre-installed on the Product by Synology, and includes any firmware, associated media, images, animations, video, audio, text and applets incorporated into the software or Product and any updates or upgrades to such software. (h) "Warranty Period" means: (i) the period commencing on the date the Product is purchased by Customer and ending (1) five years after such date for Category I Products; (2) three years after such date for Category II Products; or (3) two years after such date for Category III Products; or (4) one year after such date for Category IV Products. (i) "Web Site" means the Synology web site located at [www.synology.com](http://www.synology.com).

**Section 2. Limited Warranty and Remedies**

**2.1 Limited Warranty.** Subject to Section 2.7, Synology warrants to Customer that each Product (a) will be free of material defects in workmanship and (b) under normal use will perform substantially in accordance with Synology's published specifications for the Product during the Warranty Period. Synology warrants the Software as set forth in the accompanying end user license agreement provided with the Product, if any.

**2.2 Product Registration.** Customers may register Products with Synology and may obtain the manufacturing date for Category I Products, Category II Products and Category III Products at the Web Site. The failure to register a Product at the Web Site will not diminish the warranty rights set forth in Section 2.1. Synology is not responsible for Customer's failure to identify the manufacturing date of any Product.

**2.3 Exclusive Remedy.** If Customer gives notice of noncompliance with any of the warranties set forth in Section 2.1 within the applicable Warranty Period in the manner set forth below, then, upon verification of the noncompliance by Synology, Synology will, at Synology's option: (a) use commercially reasonable efforts to repair the Product, or (b) replace the noncomplying Product or part thereof upon return of the complete Product in accordance with Section 2.4. The foregoing sets forth Synology's entire

liability and Customer's sole and exclusive remedy for any breach of warranty under Section 2.1 or any other defect or deficiency in the Product. Customer will reasonably assist Synology to diagnose and validate any nonconformity with the Product. The warranty set forth in Section 2.1 does not include: (1) any warranty relating to the Software; (2) physical installation or removal of the Product from Customer's site; (3) visits to Customer's site; (4) labor necessary to effect repairs or replace defective parts other than during Synology's or its contracted service providers' normal local business hours, exclusive of weekends and service providers' holidays; (5) any work with any third party equipment or software; (6) any warranty of the hard disk if installed by Customer or any other third party; or (7) any warranty of compatibility with the hard disk.

**2.4 Return.** Any Product returned by Customer under Section 2.3 must be assigned a Return Merchandise Authorization ("RMA") number by Synology before shipment and must be returned in accordance with Synology's then current RMA procedures. Customer may contact any authorized Synology distributor or reseller or Synology Support to obtain assistance in obtaining an RMA, and must provide proof of purchase and product serial number when asking for such assistance. For warranty claims, Customer must return the complete Product to Synology in accordance with this Section 2.4 to be eligible for coverage under this Warranty. Any Product returned without an RMA number, or any Product that has been disassembled (except under the direction of Synology) will be refused and returned to Customer at Customer's expense. Any Product that has been assigned a RMA number must be returned in the same condition as it was received from Synology to the address designated by Synology, freight pre-paid, in packaging sufficient to protect the contents thereof and with the RMA number prominently displayed on the outside of the box. Customer is responsible for insurance and risk of loss with respect to returned items until they are properly received by Synology. A Product issued a RMA number must be returned within fifteen (15) days after issuance of the applicable RMA number.

**2.5 Replacement by Synology.** If Synology elects to replace any Product under this Warranty set forth in Section 2.1, then Synology will ship a replacement Product at Synology's expense via the shipping method selected by Synology after receipt of the nonconforming Product returned in accordance with Section 2.4 and validation by Synology that the Product does not conform to the warranty. Replacement Product will be new or serviceably used, comparable in function and performance to the original Product and warranted for the remainder of the original Warranty Period or thirty (30) days after it is shipped to Customer, whichever period is longer. Any Product found by Synology to be non-defective will be returned to Customer.

**2.6 Support.** During the Warranty Period, Synology will make available to Customer the support services. Following the expiration of the applicable Warranty Period, support for Products may be available from Synology upon written request.

**2.7 Exclusions.** The foregoing warranties and warranty obligations do not apply to any Product that (a) has been installed or used in a manner not specified or described in the Product specifications; (b) has been repaired, modified or altered by anyone other than Synology or its agent or

designee; (c) has been in any way misused, abused, or damaged; (d) has been used with items not provided by Synology other than the hardware or software for which the Product is designed; or (e) otherwise fails to conform to the Product specifications and such failure is attributable to causes not within or under Synology's control. Further, the foregoing warranties will be void if (1) Customer disassembles the Product except as authorized by Synology; (2) Customer fails to implement any correction, modification, enhancement, improvement or other update made available to Customer by Synology; or (3) Customer implements, installs or uses any correction, modification, enhancement, improvement or other update made available by any third party. The warranty set forth in Section 2.1 will terminate upon Customer's sale or transfer of the Product to a third party.

**2.8 Disclaimer of Warranties.** THE WARRANTIES, OBLIGATIONS, AND LIABILITIES OF SYNOLOGY AND THE REMEDIES OF CUSTOMER SET FORTH IN THIS WARRANTY ARE EXCLUSIVE AND IN SUBSTITUTION FOR, AND CUSTOMER HEREBY WAIVES, RELEASES AND DISCLAIMS, ALL OTHER WARRANTIES, OBLIGATIONS AND LIABILITIES OF SYNOLOGY AND ALL OTHER RIGHTS, CLAIMS AND REMEDIES OF CUSTOMER AGAINST SYNOLOGY, EXPRESS OR IMPLIED, ARISING BY LAW OR OTHERWISE, WITH RESPECT TO THE PRODUCT, ACCOMPANYING DOCUMENTATION OR SOFTWARE AND ANY OTHER GOODS OR SERVICES DELIVERED UNDER THIS WARRANTY, INCLUDING, BUT NOT LIMITED TO ANY: (A) IMPLIED WARRANTY OF MERCHANTABILITY OR FITNESS FOR A PARTICULAR PURPOSE OR USE; (B) IMPLIED WARRANTY ARISING FROM COURSE OF PERFORMANCE, COURSE OF DEALING, OR USAGE OF TRADE; (C) CLAIM OF INFRINGEMENT OR MISAPPROPRIATION; OR (D) CLAIM IN TORT (WHETHER BASED ON NEGLIGENCE, STRICT LIABILITY, PRODUCT LIABILITY OR OTHER THEORY). SYNOLOGY MAKES NO GUARANTEE AND SPECIFICALLY DISCLAIMS ANY WARRANTY THAT THE DATA OR INFORMATION STORED ON ANY SYNOLOGY PRODUCT WILL BE SECURE AND WITHOUT RISK OF DATA LOSS. SYNOLOGY RECOMMENDS THAT CUSTOMER TAKES APPROPRIATE MEASURES TO BACK UP THE DATA STORED ON THE PRODUCT. SOME STATES DO NOT ALLOW LIMITATIONS ON IMPLIED WARRANTIES, SO THE ABOVE LIMITATION MAY NOT APPLY TO CUSTOMER.

### **Section 3. Limitations of Liability**

**3.1 Force Majeure.** Synology will not be liable for, or be considered to be in breach of or default under this Warranty on account of, any delay or failure to perform as required by this Warranty as a result of any cause or condition beyond its reasonable control (including, without limitation, any act or failure to act by Customer).

**3.2 Disclaimer of Certain Damages.** IN NO EVENT WILL SYNOLOGY OR ITS SUPPLIERS BE LIABLE FOR THE COST OF COVER OR FOR ANY INCIDENTAL, INDIRECT, SPECIAL, PUNITIVE, CONSEQUENTIAL OR SIMILAR DAMAGES OR LIABILITIES WHATSOEVER (INCLUDING, BUT NOT LIMITED TO LOSS OF DATA, INFORMATION, REVENUE, PROFIT OR BUSINESS) ARISING OUT OF OR RELATING TO THE USE OR INABILITY TO USE THE PRODUCT, ANY ACCOMPANYING DOCUMENTATION OR SOFTWARE AND ANY OTHER GOODS OR SERVICES PROVIDED UNDER THIS WARRANTY, WHETHER BASED ON CONTRACT, TORT (INCLUDING NEGLIGENCE), STRICT LIABILITY OR OTHER THEORY EVEN IF SYNOLOGY HAS BEEN ADVISED OF THE POSSIBILITY OF SUCH DAMAGES.

**3.3 Limitation of Liability.** SYNOLOGY'S AND ITS SUPPLIERS' LIABILITY ARISING OUT OF OR RELATING TO THE USE OR INABILITY TO USE THE PRODUCT, ANY ACCOMPANYING DOCUMENTATION OR SOFTWARE AND ANY OTHER GOODS OR SERVICES PROVIDED UNDER THIS WARRANTY IS LIMITED TO THE AMOUNT ACTUALLY PAID BY CUSTOMER FOR THE PRODUCT REGARDLESS OF THE AMOUNT OF DAMAGES CUSTOMER MAY INCUR AND WHETHER BASED ON CONTRACT, TORT (INCLUDING NEGLIGENCE), STRICT LIABILITY OR OTHER THEORY. The foregoing disclaimer of certain damages and limitation of liability will apply to the maximum extent permitted by applicable law. The laws of some states/jurisdictions do not allow exclusion or limitation of certain damages. To the extent that those laws apply to the Product, the exclusions and limitations set forth above may not apply to Customer.

### **Section 4. Miscellaneous**

**4.1 Proprietary Rights.** The Product and any accompanying Software and documentation provided with the Product include proprietary and intellectual property rights of Synology and its third party suppliers and licensors. Synology retains and reserves all right, title, and interest in the intellectual property rights of the Product, and no title to or ownership of any intellectual property rights in or to the Product, any accompanying Software or documentation and any other goods provided under this Warranty is transferred to Customer under this Warranty. Customer will (a) comply with the terms and conditions of the Synology end user license agreement accompanying any Software furnished by Synology or an authorized Synology distributor or reseller; and (b) not attempt to reverse engineer any Product or component thereof or accompanying Software or otherwise misappropriate, circumvent or violate any of Synology's intellectual property rights.

**4.2 Assignment.** Customer will not assign any of its rights under this Warranty directly, by operation of law or otherwise, without the prior written consent of Synology.

**4.3 No Additional Terms.** Except as expressly permitted by this Warranty, neither party will be bound by, and each party specifically objects to, any term, condition or other provision that conflicts with the provisions of this Warranty that is made by the other party in any purchase order, receipt, acceptance, confirmation, correspondence or otherwise, unless each party specifically agrees to such provision in writing. Further, if this Warranty conflicts with any terms or conditions of any other agreement entered into by the parties with respect to the Product, this Warranty will prevail unless the other agreement specifically references the sections of this Warranty that it supersedes.

**4.4 Applicable Law.** Unless expressly prohibited by local law, this Warranty is governed by the laws of the State of Washington, U.S.A. without regard to any conflict of law principles to the contrary. The 1980 U.N. Convention on Contracts for the International Sale of Goods or any successor thereto does not apply.

**4.5 Dispute Resolution.** Any dispute, controversy or claim arising out of or relating to this Warranty, the Product or services provided by Synology with respect to the Product or the relationship between Customers residing within the United States and Synology will be resolved exclusively and finally by arbitration under the current commercial rules of the American Arbitration Association, except as otherwise provided below. The arbitration will be conducted before a single arbitrator, and will be limited solely to the dispute between Customer and Synology. The arbitration, or any portion of it, will not be consolidated with any other arbitration and will not be conducted on a class-wide or class action basis. The arbitration shall be held in King County, Washington, U.S.A. by submission of documents, by telephone, online or in person as determined by the

arbitrator at the request of the parties. The prevailing party in any arbitration or legal action occurring within the United States or otherwise shall receive all costs and reasonable attorneys' fees, including any arbitration fee paid by the prevailing party. Any decision rendered in such arbitration proceedings will be final and binding on the parties, and judgment may be entered thereon in any court of competent jurisdiction. Customer understands that, in the absence of this provision, Customer would have had a right to litigate any such dispute, controversy or claim in a court, including the right to litigate claims on a class-wide or class-action basis, and Customer expressly and knowingly waives those rights and agrees to resolve any disputes through binding arbitration in accordance with the provisions of this Section 4.5. For Customers not residing within the United States, any dispute, controversy or claim described in this section shall be finally resolved by arbitration conducted by three neutral arbitrators in accordance with the procedures of the R.O.C. Arbitration Law and related enforcement rules. The arbitration shall take place in Taipei, Taiwan, R.O.C., and the arbitration proceedings shall be conducted in English or, if both parties so agree, in Mandarin Chinese. The arbitration award shall be final and binding on the parties and may be enforced in any court having jurisdiction. Nothing in this Section shall be deemed to prohibit or restrict Synology from seeking injunctive relief or seeking such other

rights and remedies as it may have at law or equity for any actual or threatened breach of any provision of this Warranty relating to Synology's intellectual property rights.

**4.6 Attorneys' Fees.** In any arbitration, mediation, or other legal action or proceeding to enforce rights or remedies under this Warranty, the prevailing party will be entitled to recover, in addition to any other relief to which it may be entitled, costs and reasonable attorneys' fees.

**4.7 Export Restrictions.** You acknowledge that the Product may be subject to U.S. export restrictions. You will comply with all applicable laws and regulations that apply to the Product, including without limitation the U.S. Export Administration Regulations.

**4.8 Severability.** If any provision of this Warranty is held by a court of competent jurisdiction to be invalid, illegal, or unenforceable, the remainder of this Warranty will remain in full force and effect.

**4.9 Entire Agreement.** This Warranty constitutes the entire agreement, and supersedes any and all prior agreements, between Synology and Customer related to the subject matter hereof. No amendment, modification or waiver of any of the provisions of this Warranty will be valid unless set forth in a written instrument signed by the party to be bound thereby.