

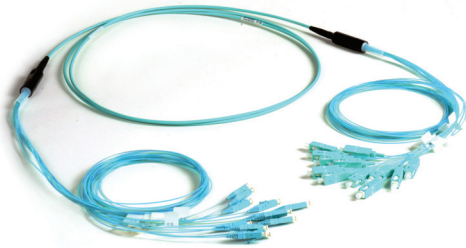
# XGLO® LC/SC Fiber Trunks

Regional Availability - Global

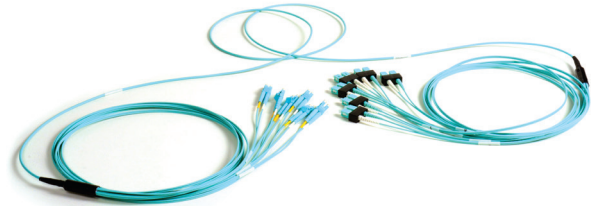
Siemon's RazorCore fiber trunks provide an efficient and cost effective alternative to individual field terminated components. Combining factory terminated connectors with Siemon RazorCore reduced O.D. cable in a high-performance cable assembly, Siemon RazorCore fiber trunks were designed with Local Area Networks (LAN), Data Centers and Storage Area Networks (SAN) applications in mind. These assemblies allow up to 75% faster field installation times. Standard configurations also help maintain consistent cable layout and facilitate efficient moves, adds and changes. These precision cable assemblies are 100% inspected ensuring superior performance and quality. The RazorCore fiber trunks are available in Singlemode or Multimode performance with LC BladePatch, SC, or LC connectivity.



2.4mm Unitube Duplex Breakout - LC BladePatch



900µm Simplex Breakout



2.0mm Duplex Breakout



## LC BladePatch

- Enhances installation and removal access in high density environments
- Low profile push-pull boot optimizes side-stackability and accessibility
- The UniClick™ uniboot technology features a smaller footprint, one-piece body with an integrated switch to enable faster and easier polarity change using the innovative rotating latches
- Fits any standard LC adapter opening or LC SFP module

## Reduced Pathway Fill

Siemon's RazorCore cable has significantly reduced cable O.D. resulting in less cable tray fill and pathway restrictions

## Proper Orientation

Each leg is designated for proper connector orientation

## Custom Configurations

Available from 6 to 144 fiber counts in various lengths

## Multiple Fiber Types

Available in bend insensitive OM3, OM4 Multimode 50/125 laser optimized and OS1/OS2 Singlemode cable with Plenum and LSOH jacket ratings.

## Factory Terminated and Tested

Every fiber cable assembly is factory terminated and tested for premium performance

# Product Information

## Connectors - Optical Specifications

Fiber Type	Performance Class	Max Insertion Loss for Standard LC/SC (dB)	Min Return Loss (dB)*	Ultra Low Loss LC BladePatch Max Insertion Loss
50/125 µm Laser Optimized Multimode (OM3,OM4)	XGLO	0.25	30	0.15
Singlemode UPC (OS1/OS2)	XGLO	0.40	55	0.20
Singlemode APC (OS1/OS2)	XGLO	0.40	65	0.25

\*Min return Loss is the same for both Standard and Ultra Low Loss.

## Cable - Optical and Physical Specifications (Nominal)

Jacket Type	Fiber Strand Count	Cable Diameter mm (in.)	Min Bend Radius Operational mm (in.)	Min Bend Radius Installation mm (in.)	Max Pulling Eye Diameter mm (in.)	Required Duct Diameter mm (in.)*
Plenum	6	3.0 (0.12)	30 (1.2)	45 (1.8)	44.5 (1.75)	69.9 (2.75)
Plenum	8	3.0 (0.12)	30 (1.2)	45 (1.8)	44.5 (1.75)	69.9 (2.75)
Plenum	12	3.0 (0.12)	30 (1.2)	45 (1.8)	44.5 (1.75)	69.9 (2.75)
Plenum	16	3.8 (0.15)	38 (1.5)	57 (2.2)	44.5 (1.75)	69.9 (2.75)
Plenum	24	3.8 (0.15)	38 (1.5)	57 (2.2)	44.5 (1.75)	69.9 (2.75)
Plenum	36	7.5 (0.30)	75 (3.0)	113 (4.4)	63.5 (2.5)	88.9 (3.5)
Plenum	48	7.5 (0.30)	75 (3.0)	113 (4.4)	63.5 (2.5)	88.9 (3.5)
Plenum	72	8.5 (0.33)	85 (3.3)	128 (5.0)	63.5 (2.5)	88.9 (3.5)
Plenum	96	13.6 (0.54)	136 (5.4)	204 (8.0)	88.9 (3.25)	114.3 (4.5)
Plenum	144	13.6 (0.54)	136 (5.4)	204 (8.0)	88.9 (3.25)	114.3 (4.5)
LSOH	6	3.0 (0.12)	30 (1.2)	45 (1.8)	44.5 (1.75)	69.9 (2.75)
LSOH	8	3.0 (0.12)	30 (1.2)	45 (1.8)	44.5 (1.75)	69.9 (2.75)
LSOH	12	3.0 (0.12)	30 (1.2)	45 (1.8)	44.5 (1.75)	69.9 (2.75)
LSOH	16	3.8 (0.15)	38 (1.5)	57 (2.2)	44.5 (1.75)	69.9 (2.75)
LSOH	24	3.8 (0.15)	38 (1.5)	57 (2.2)	44.5 (1.75)	69.9 (2.75)
LSOH	36	6.5 (0.26)	65 (2.6)	98 (3.3)	63.5 (2.5)	88.9 (3.5)
LSOH	48	6.5 (0.26)	65 (2.6)	98 (3.3)	63.5 (2.5)	88.9 (3.5)
LSOH	72	7.0 (0.28)	70 (2.8)	105 (4.1)	63.5 (2.5)	88.9 (3.5)
LSOH	96	12.5 (0.49)	125 (4.9)	188 (7.4)	88.9 (3.25)	114.3 (4.5)
LSOH	144	14.9 (0.59)	149 (5.9)	224 (8.8)	88.9 (3.25)	114.3 (4.5)

\*Pulling eye assembly shall be capable of passing through these minimum duct diameter requirements during product installation.  
Pulling eye max pull force 18.1kg (40lbs)

## Bend Insensitive Fiber

Multimode OM3 Per TIA/EIA-492AAAC, IEC60793-2-10 A1a.2

Multimode OM4 Per TIA/EIA-492AAD, IEC60793-2-10 A1a.3

Singlemode OS1/OS2 Per TIA-492CAAB, IEC60793-2-50 B1.3, ITU-T G.652 C/D, ITU-T G.657.A1

# Ordering Information

TFU(X)(X)(X)(X)(X)(X)(X)(X)(XXX)(X)

**Fibre Count**

A = 6	E = 24	J = 96
B = 8	F = 36	K = 144
C = 12	G = 48	
D = 16	H = 72	

**Pulling Eye**  
**A** = Side A  
**B** = Side B  
**C** = Side A&B  
**D** = None

**Fibre Type**  
**A** = OS1/OS2, Singlemode Yellow  
**L** = OM3, XGLO 300 50/125 Multimode Aqua  
**V** = OM4, XGLO 550 50/125 Multimode Aqua  
**E** = OM4, XGLO 550 50/125 Multimode Erika Violet

**Cable Type**  
**P** = Plenum - Indoor Distribution (OFNP)  
**L** = LSOH - Indoor Distribution (IEC 60332-3C)

**LEG Construction (Side A)**  
**A** = Simplex 900µm  
**B** = Duplex 2.0mm  
**C** = Uni-Tube Duplex 2.4mm  
     LC BladePatch only  
**Z** = Blunt Cut 250µm\*

**Unit of Measure**  
**F** = Feet  
**M** = Metres

**Cable Length**  
**Length must be 3 digits**  
**Example: 004 = 4m**  
**012 = 12 ft.**

**Connector Type (Side B)**

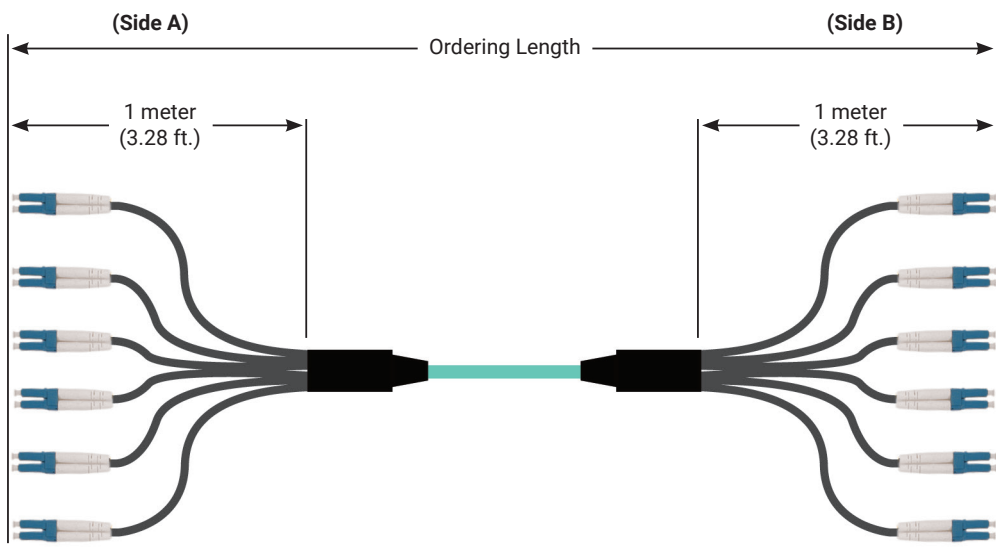
<b>A</b> = LC Multimode	<b>F</b> = SC Multimode	<b>Z</b> = Blunt Cut*
<b>B</b> = LC UPC Singlemode	<b>G</b> = SC UPC Singlemode	
<b>C</b> = LC APC Singlemode	<b>H</b> = SC APC Singlemode	
<b>D</b> = LC BladePatch Multimode	<b>L</b> = LC BladePatch APC Singlemode	
<b>E</b> = LC BladePatch UPC	RFP Polarity only	

**Connector Type (Side A)**

<b>A</b> = LC Multimode	<b>F</b> = SC Multimode	<b>Z</b> = Blunt Cut*
<b>B</b> = LC UPC Singlemode	<b>G</b> = SC UPC Singlemode	
<b>C</b> = LC APC Singlemode	<b>H</b> = SC APC Singlemode	
<b>D</b> = LC BladePatch Multimode	<b>L</b> = LC BladePatch APC Singlemode	
<b>E</b> = LC BladePatch UPC	RFP Polarity only	

**LEG Construction (Side B)**  
**A** = Simplex 900µm  
**B** = Duplex 2.0mm  
**C** = Uni-Tube Duplex 2.4 LC BladePatch only  
**Z** = Blunt Cut 250µm\*

\*Blunt cuts are flush (no breakout length) and are only available with 250µm\* coated fibers color-coded per TIA-598-D  
 Ordering length is measured connector tip to connector tip. Minimum order length is 3 meters (9.8 ft).



Note: These products are made to order. Call for lead time and availability.

## TIA-598-D Color Code

Fiber/Connect or Number	Color
1	Blue
2	Orange
3	Green
4	Brown
5	Slate
6	White
7	Red
8	Black
9	Yellow
10	Violet
11	Rose
12	Aqua

Because we continuously improve our products, Siemon reserves the right to change specifications and availability without prior notice.

<b>North America</b> P: (1) 860 945 4200	<b>Asia Pacific</b> P: (61) 2 8977 7500	<b>Latin America</b> P: (571) 657 1950/51/52	<b>Europe</b> P: (44) 0 1932 571771	<b>China</b> P: (86) 215385 0303	<b>India, Middle East &amp; Africa</b> P: (971) 4 3689743
<b>Siemon Interconnect Solutions</b> P: (1) 860 945 4213 www.siemon.com/SIS	<b>Mexico</b> P: (521) 556 387 7708/09/10				

