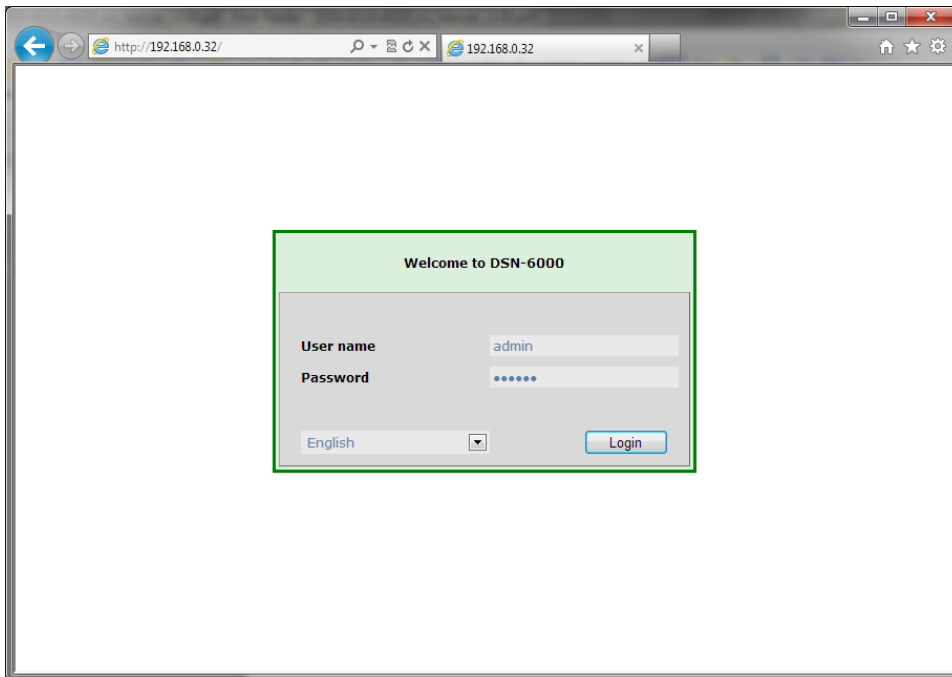


DSN-6120



A screenshot of a web browser window showing the login page for the DSN-6000. The browser's address bar displays "http://192.168.0.32/". The page content is centered and features a light green header with the text "Welcome to DSN-6000". Below the header is a login form with the following fields and elements:

- User name:** A text input field containing the text "admin".
- Password:** A password input field with seven dots representing the masked password.
- Language:** A dropdown menu currently set to "English".
- Login:** A blue button labeled "Login".

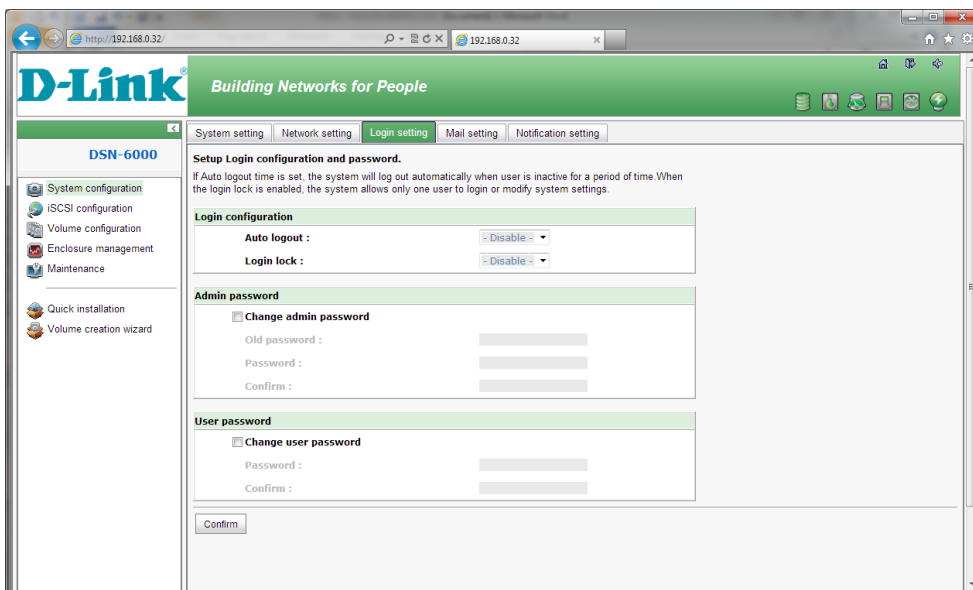
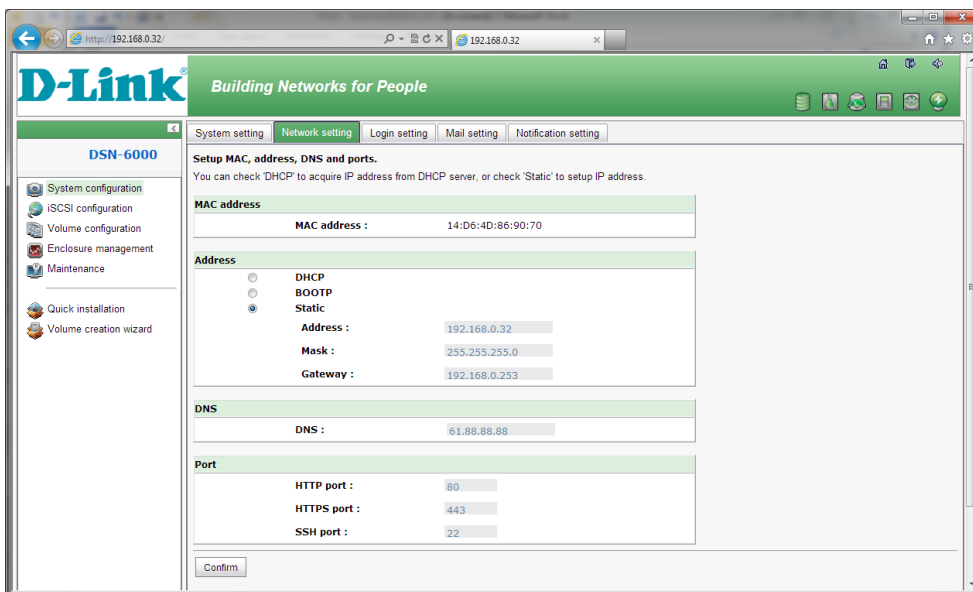
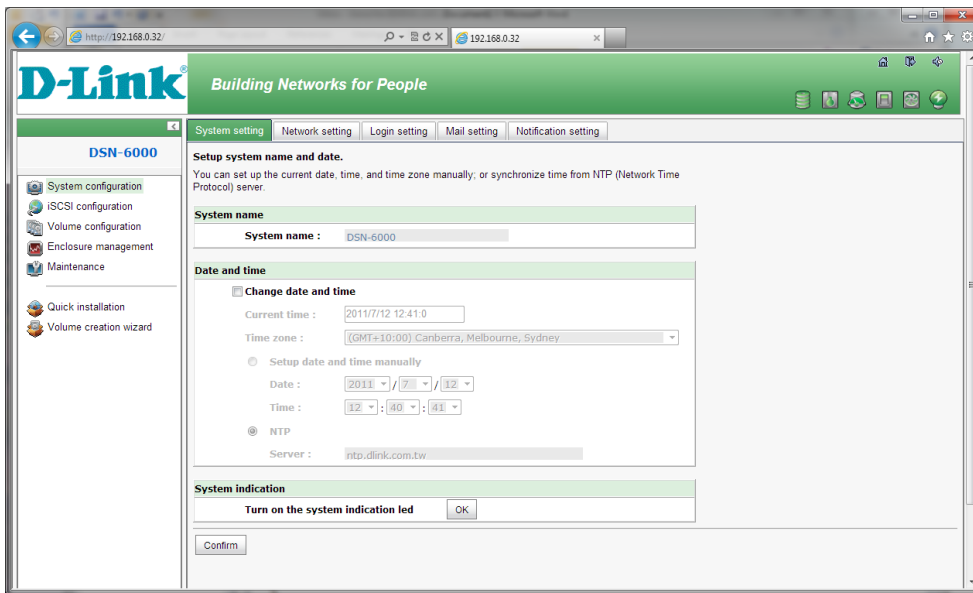
admin/123456

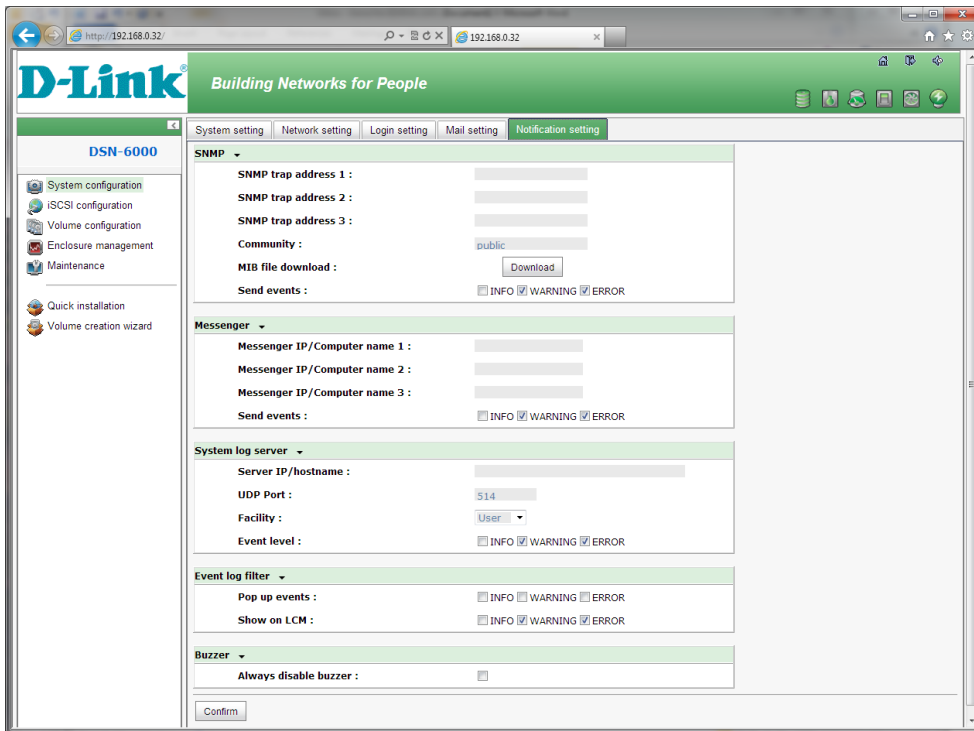
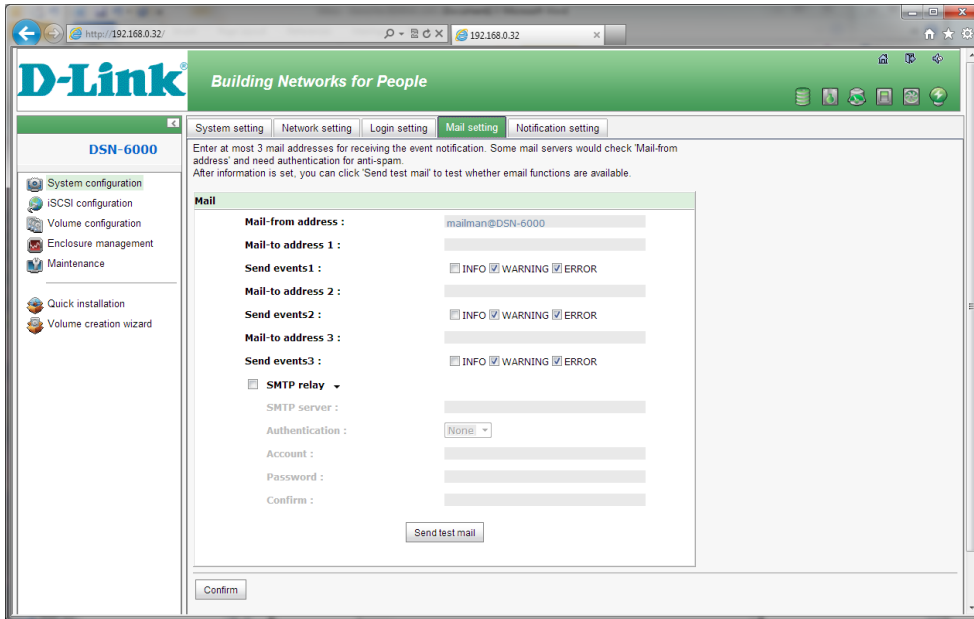


A screenshot of the D-Link DSN-6000 management interface in a web browser. The browser's address bar shows "http://192.168.0.32/". The page features the D-Link logo and the slogan "Building Networks for People" at the top. On the left side, there is a navigation menu with the following items:

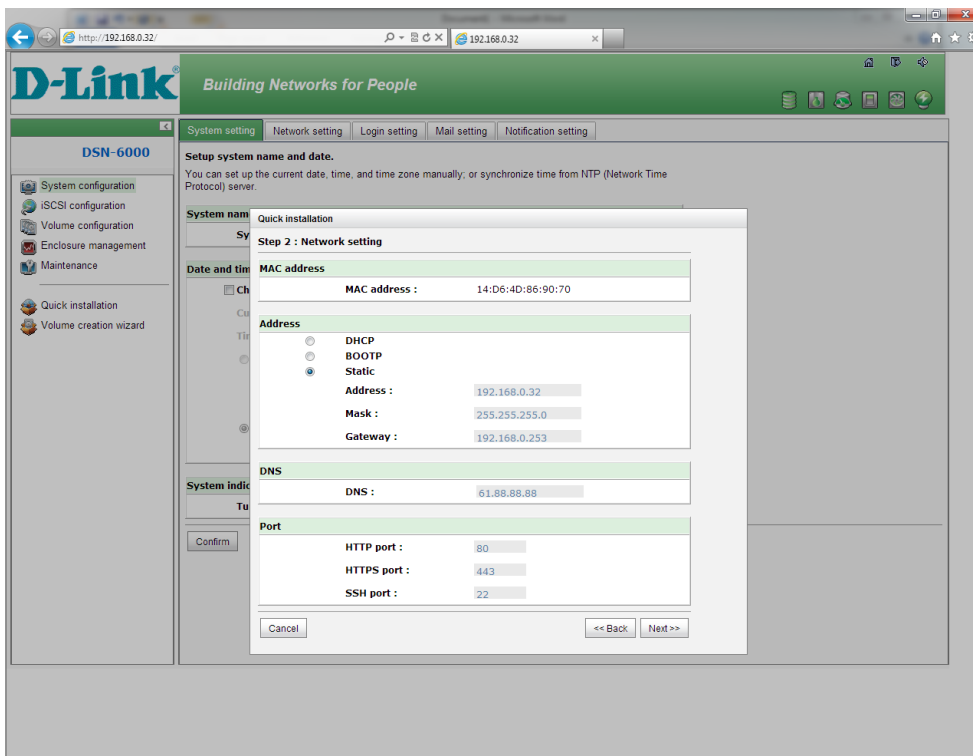
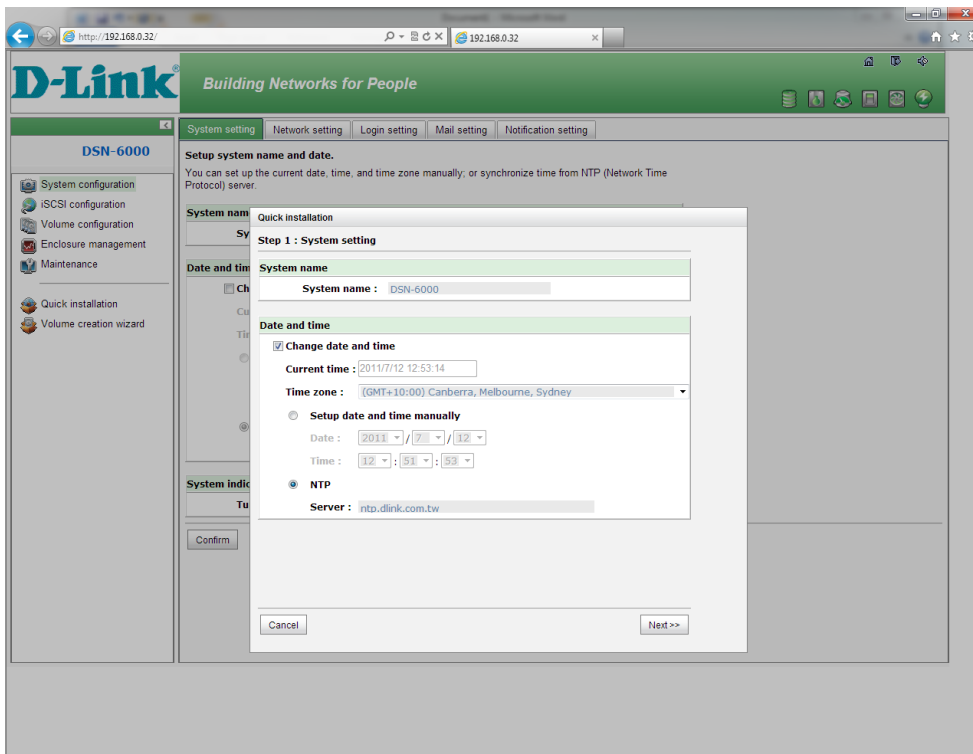
- System configuration
- iSCSI configuration
- Volume configuration
- Enclosure management
- Maintenance
- Quick installation
- Volume creation wizard

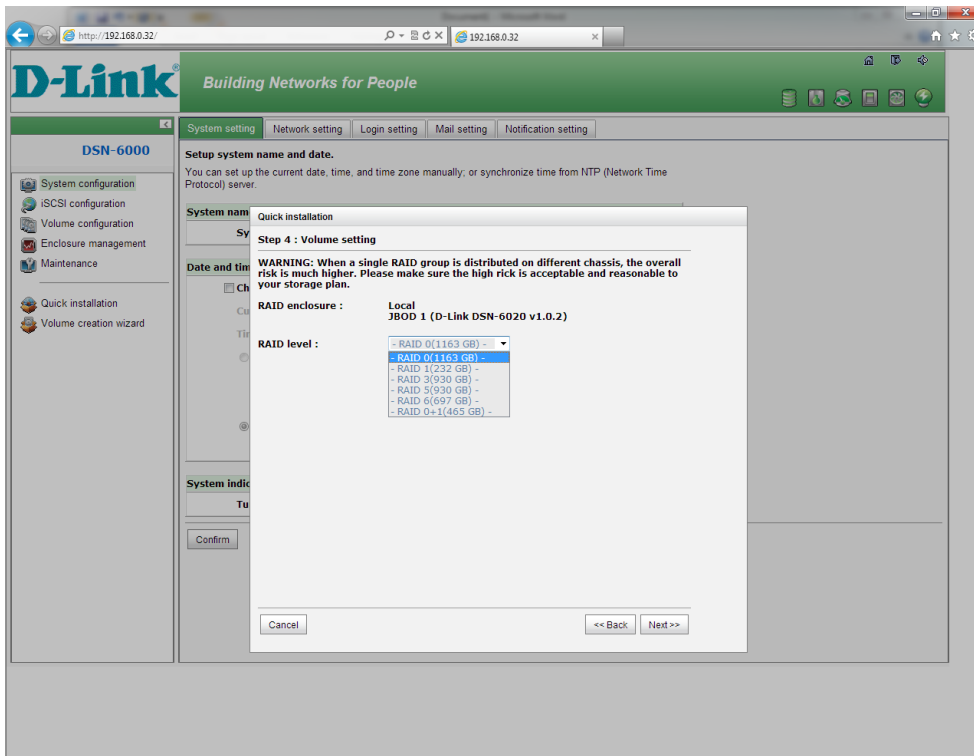
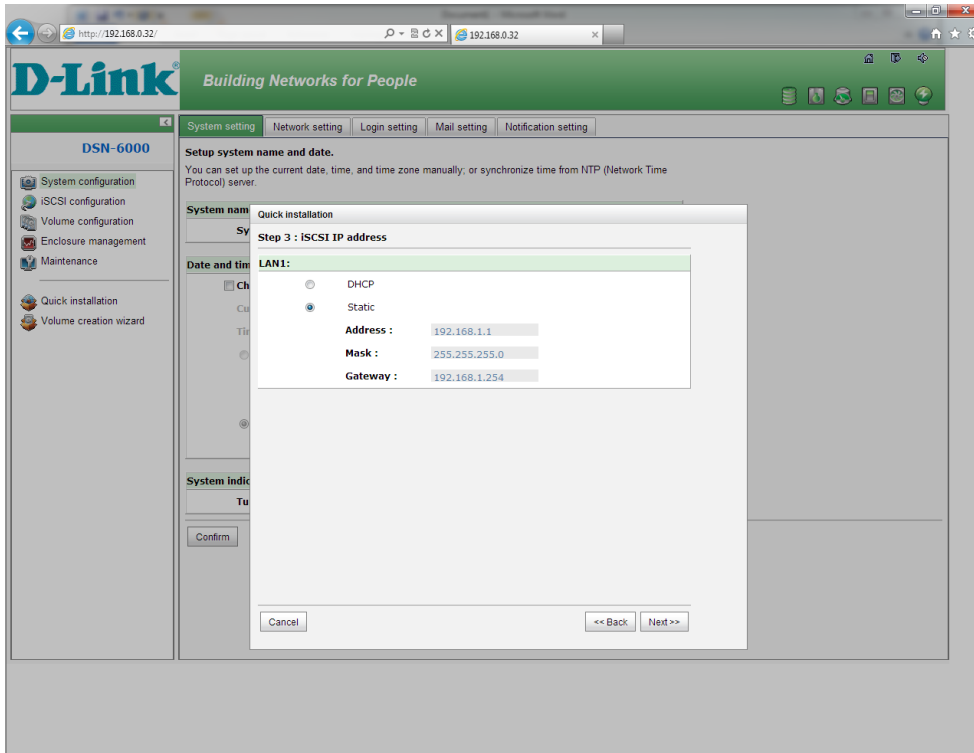
The main content area displays a large image of the DSN-6000 hardware device, which is a black server rack unit with a silver front panel.

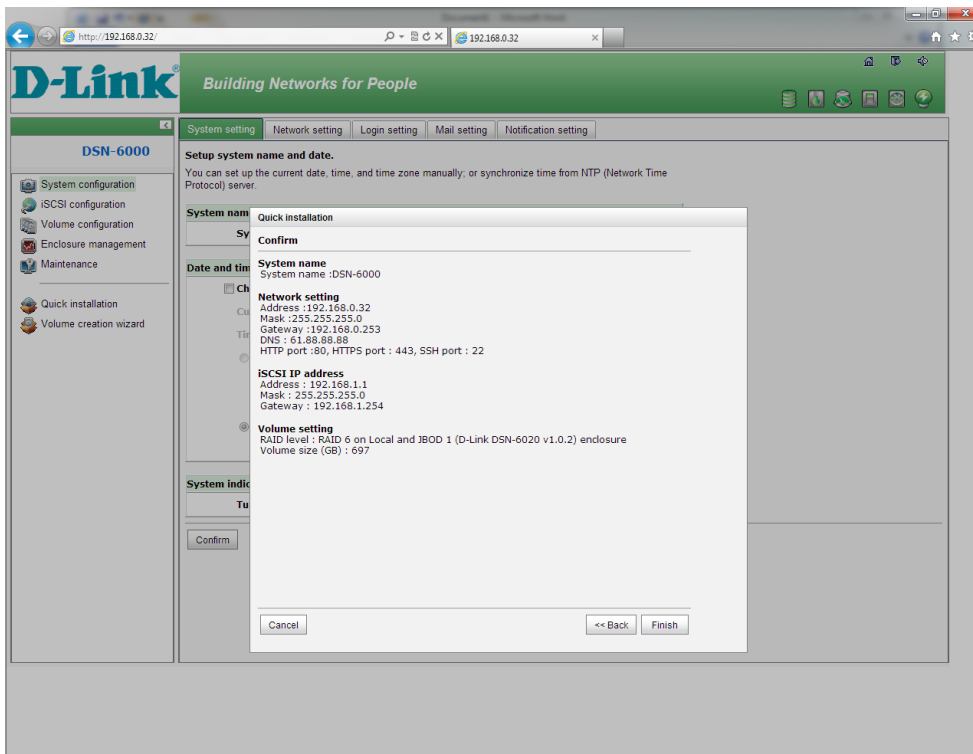




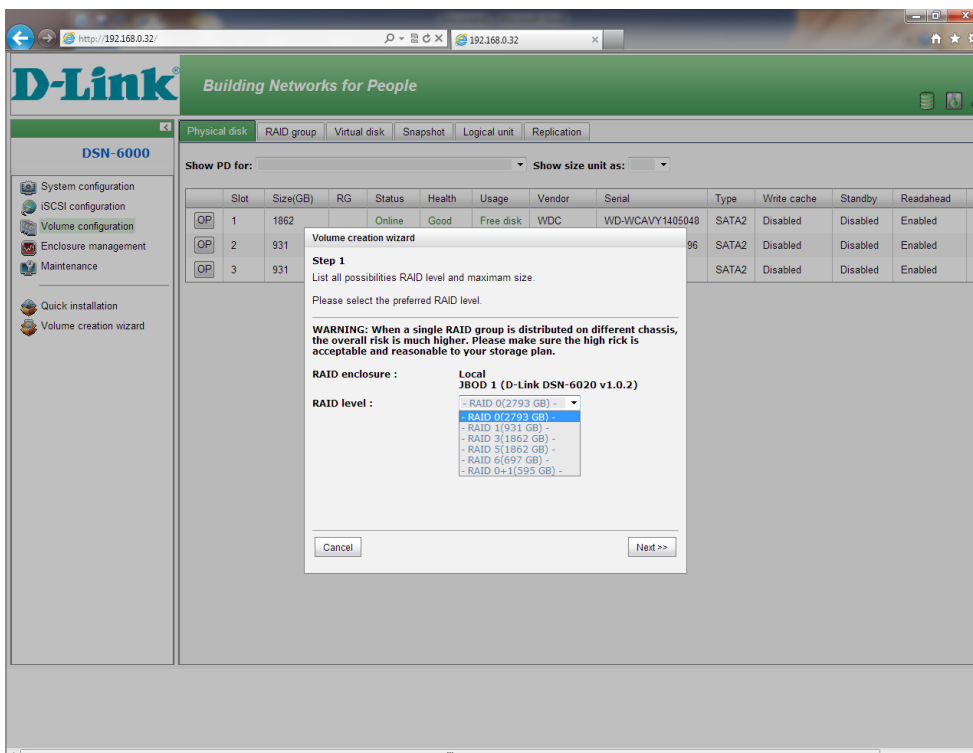
Quick Installation:








Volume Creation Wizard:




Building Networks for People

DSN-6000

- System configuration
- iSCSI configuration
- Volume configuration
- Enclosure management
- Maintenance
- Quick installation
- Volume creation wizard

Physical disk | RAID group | Virtual disk | Snapshot | Logical unit | Replication

Show PD for: Show size unit as:

	Slot	Size(GB)	RG	Status	Health	Usage	Vendor	Serial	Type	Write cache	Standby	Readahead	Co
	1	1862		Online	Good	Free disk	WDC	WD-WCAVY1405048	SATA2	Disabled	Disabled	Enabled	Er
	2	931							SATA2	Disabled	Disabled	Enabled	Er
	3	931							SATA2	Disabled	Disabled	Enabled	Er

Volume creation wizard

Step 2

Choose default algorithm for maximum RG capacity.
Possible combinations for the preferred RAID level are listed, check 'Customization' to choose the preferred option.


Hint: Maximum physical disks for one RG is 32.

Use default algorithm
 Customization

RAID group : - new 4 disk (465 GB) -

- new 4 disk (405 GB) -
- new 4 disk (500 GB) -
- new 5 disk (697 GB) -

Cancel
<< Back
Next >>


Building Networks for People

DSN-6000

- System configuration
- iSCSI configuration
- Volume configuration
- Enclosure management
- Maintenance
- Quick installation
- Volume creation wizard

Physical disk | RAID group | Virtual disk | Snapshot | Logical unit | Replication

Show PD for: Show size unit as:

	Slot	Size(GB)	RG	Status	Health	Usage	Vendor	Serial	Type	Write cache	Standby	Readahead	Co
	1	1862		Online	Good	Free disk	WDC	WD-WCAVY1405048	SATA2	Disabled	Disabled	Enabled	Er
	2	931							SATA2	Disabled	Disabled	Enabled	Er
	3	931							SATA2	Disabled	Disabled	Enabled	Er

Volume creation wizard

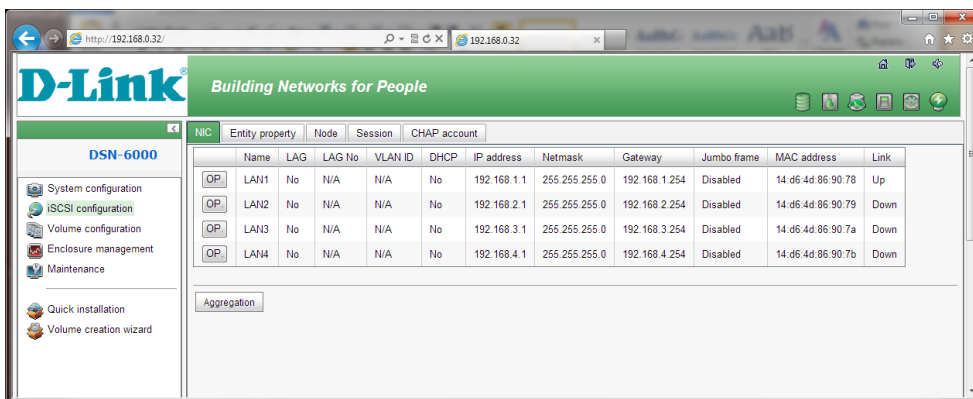
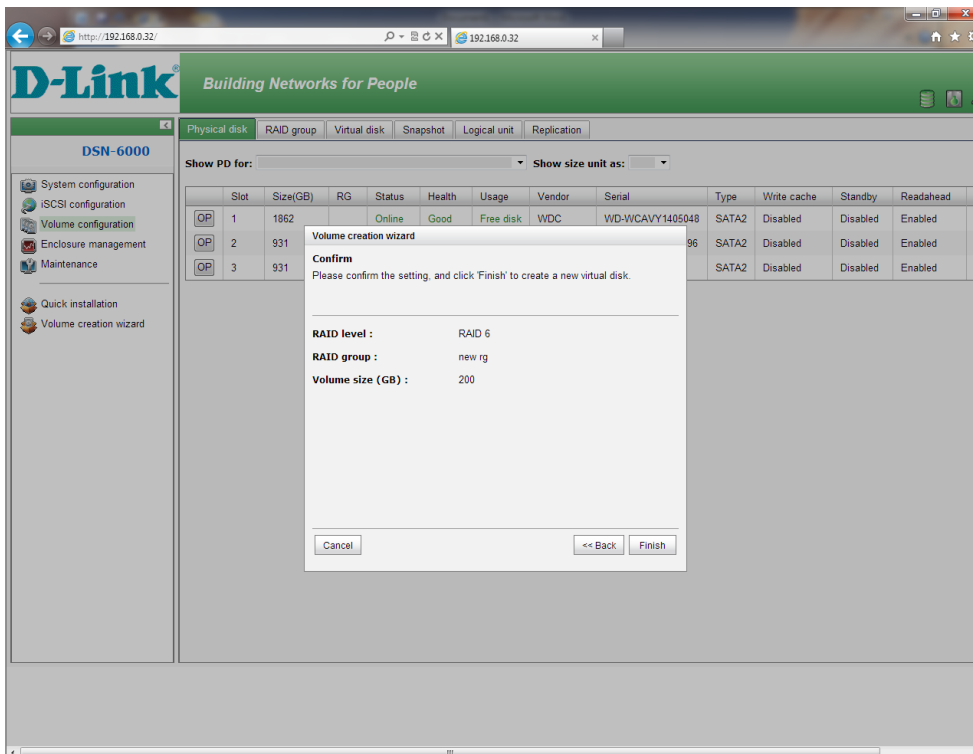
Step 3

Decide VD size.

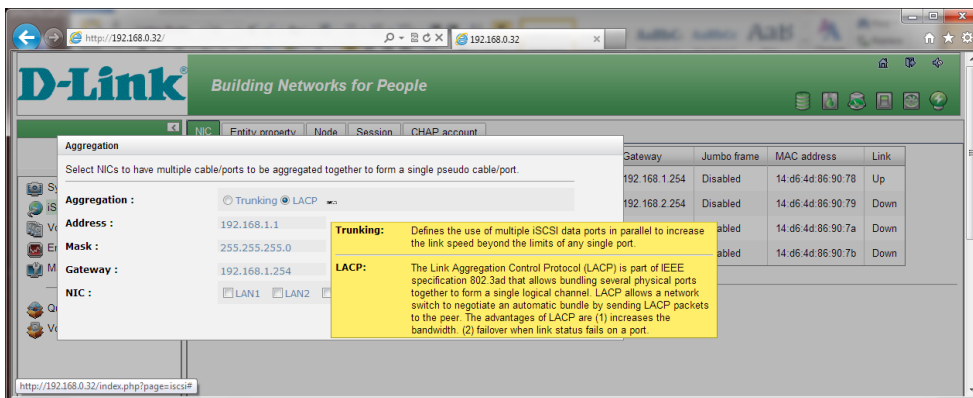
Enter a number less or equal to the default number.

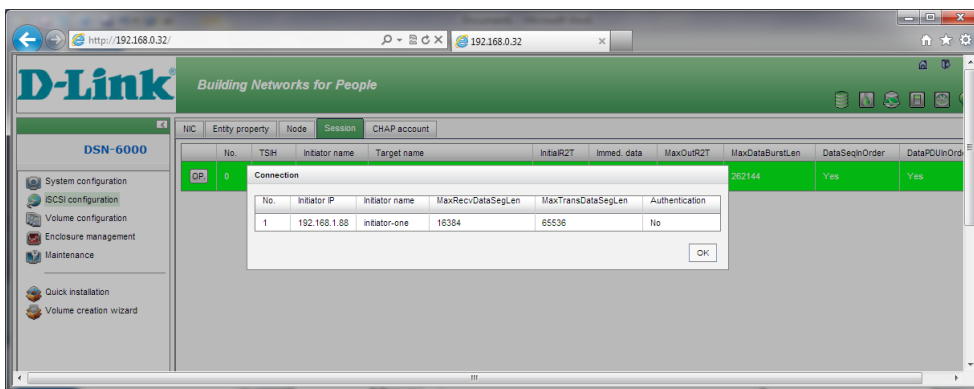
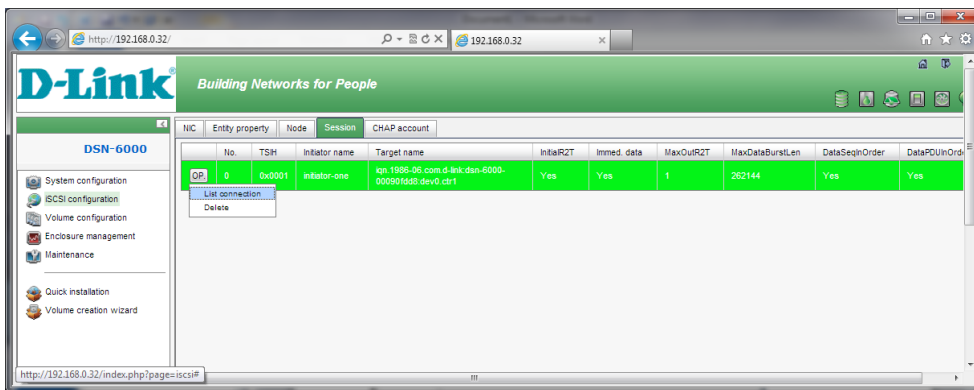
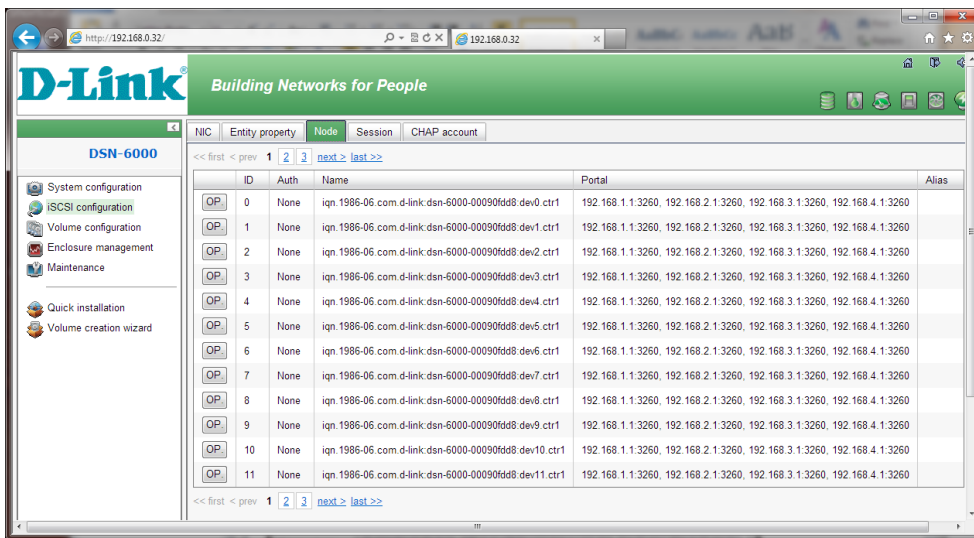
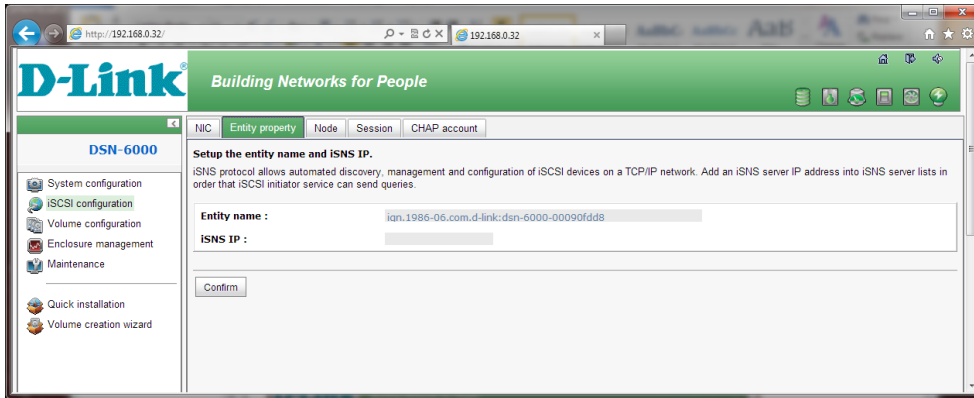
Volume size (GB) :

Cancel
<< Back
Next >>



Aggregation:





Building Networks for People

DSN-6000

NIC Entity property Node Session **CHAP account**

Challenge Handshake Authorization Protocol(CHAP).
 A type of authentication in which the authentication server sends the client a key to be used for encrypting the username and password. CHAP enables the username and password to be transmitted in an encrypted form for protection.

No user now!

Create

System configuration
 iSCSI configuration
 Volume configuration
 Enclosure management
 Maintenance
 Quick installation
 Volume creation wizard

Building Networks for People

DSN-6000

Physical disk RAID group Virtual disk Snapshot Logical unit Replication

Show PD for: - Local - Show size unit as: (GB)

Slot	Size(GB)	RG	Status	Health	Usage	Vendor	Serial	Type	Write cache	Standby	Re
OP 1	1862		Online	Good	Free disk	WDC	WD-WCAVY1405048	SATA2	Disabled	Disabled	Enc
OP 2	931	QUICK16160	Online	Good	RAID disk	WDC	WD-WCAV56224396	SATA2	Disabled	Disabled	Enc
OP 3	931	QUICK16160	Online	Good	RAID disk	SAMSUNG	S13PJQSS700701	SATA2	Disabled	Disabled	Enc

System configuration
 iSCSI configuration
 Volume configuration
 Enclosure management
 Maintenance
 Quick installation
 Volume creation wizard

Building Networks for People

DSN-6000

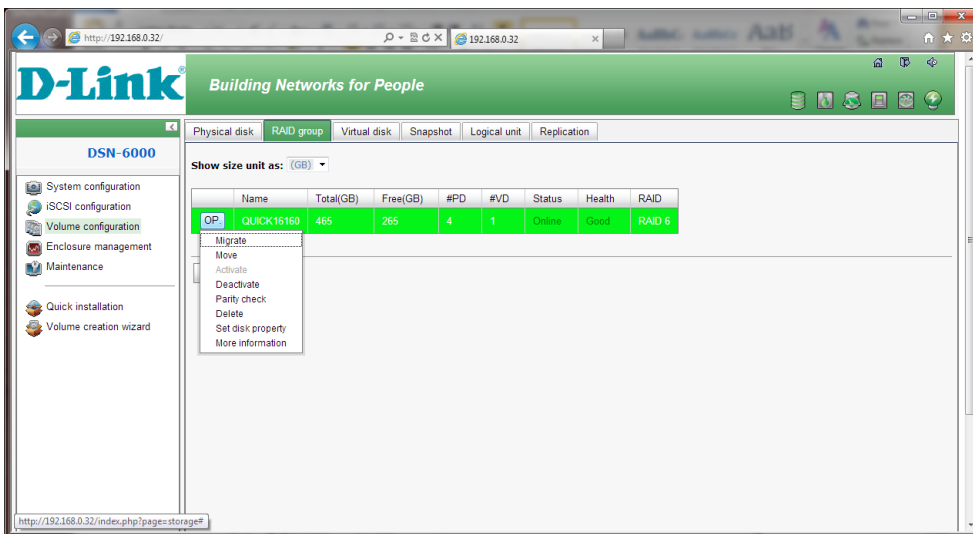
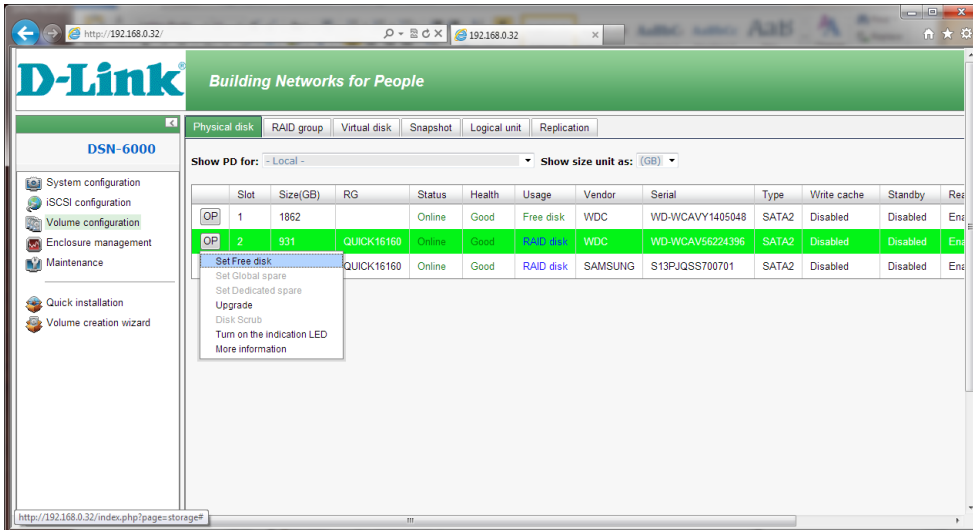
Physical disk RAID group Virtual disk Snapshot Logical unit Replication

Show PD for: - Local - Show size unit as: (GB)

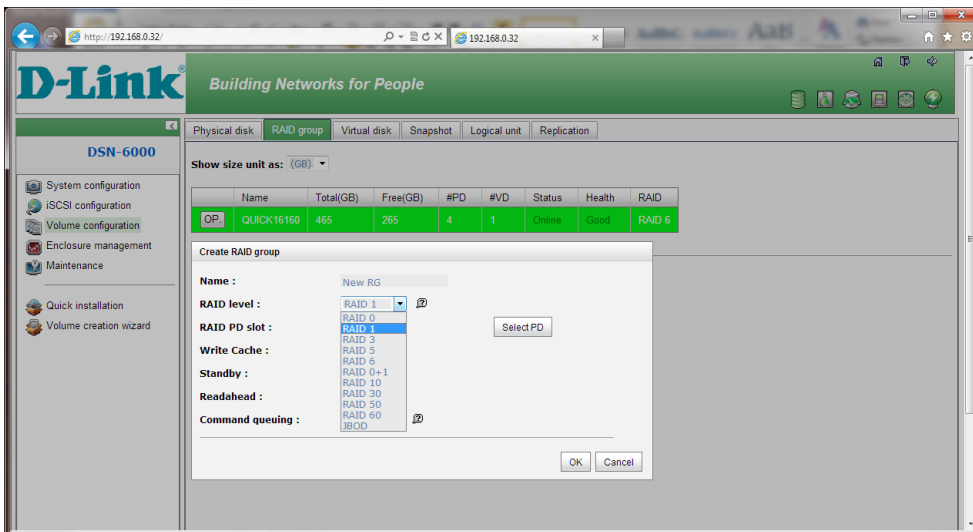
Slot	Size(GB)	RG	Status	Health	Usage	Vendor	Serial	Type	Write cache	Standby	Re
OP 1	1862		Online	Good	Free disk	WDC	WD-WCAVY1405048	SATA2	Disabled	Disabled	Enc
		QUICK16160	Online	Good	RAID disk	WDC	WD-WCAV56224396	SATA2	Disabled	Disabled	Enc
		QUICK16160	Online	Good	RAID disk	SAMSUNG	S13PJQSS700701	SATA2	Disabled	Disabled	Enc

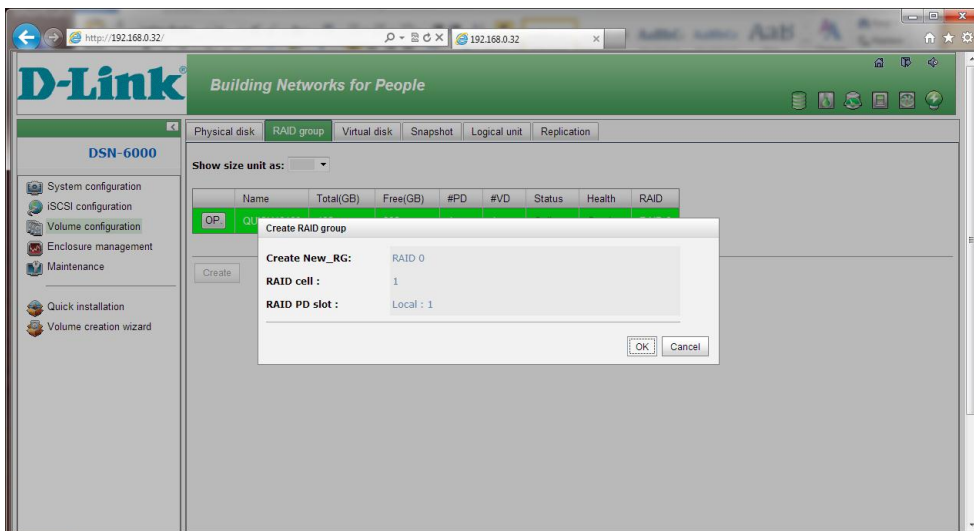
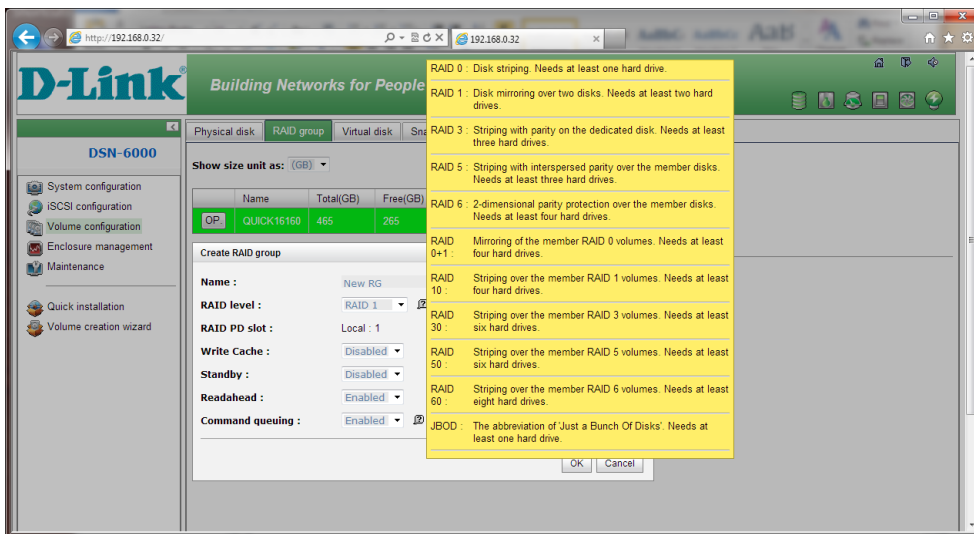
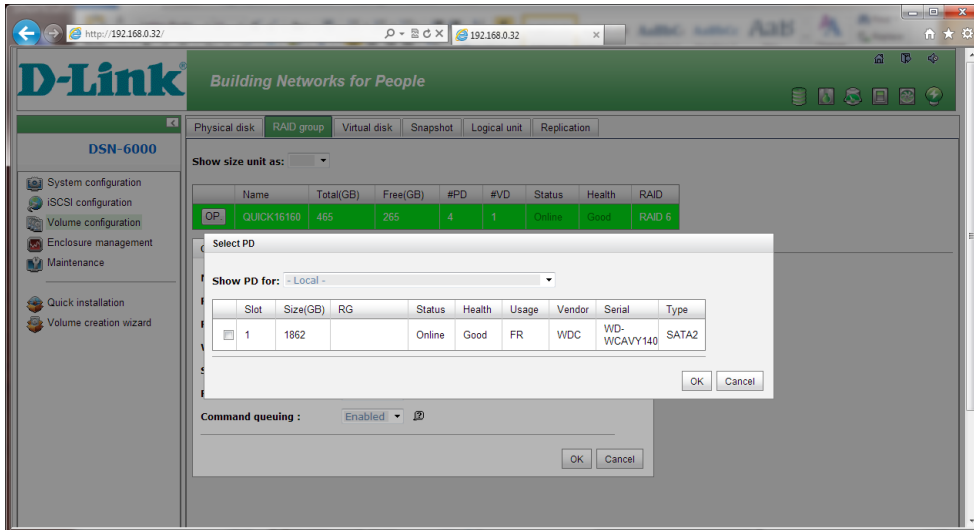
- Set Free disk
- Set Global spare**
- Set Dedicated spare
- Upgrade
- Disk Scrub
- Turn on the Indication LED
- More information

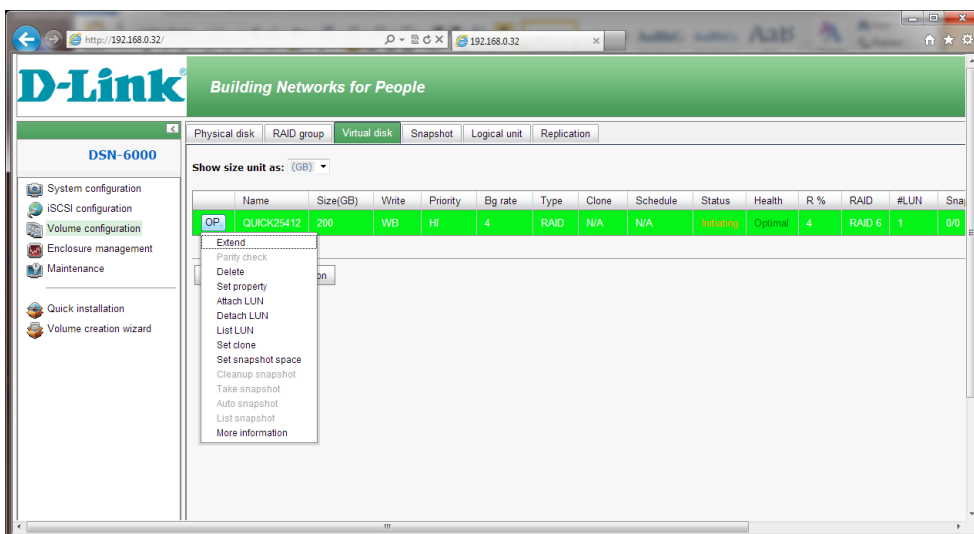
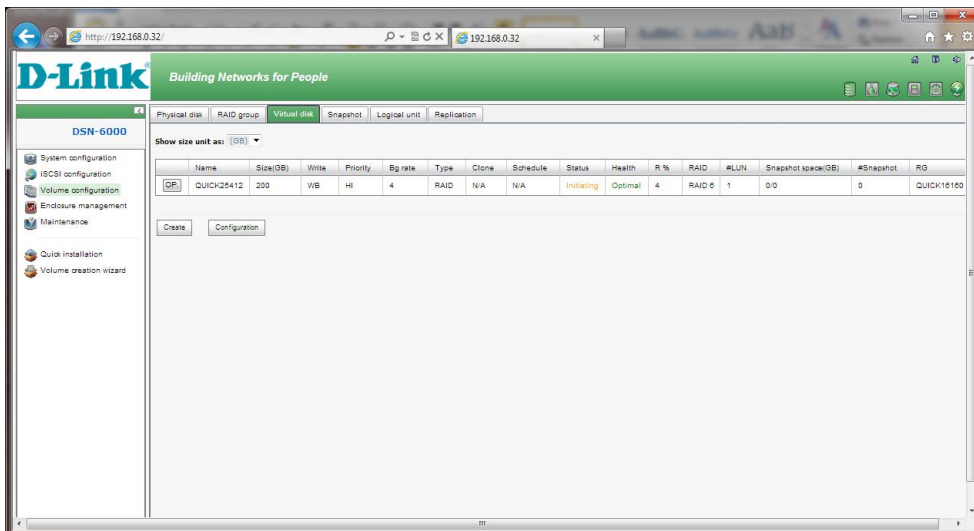
System configuration
 iSCSI configuration
 Volume configuration
 Enclosure management
 Maintenance
 Quick installation
 Volume creation wizard



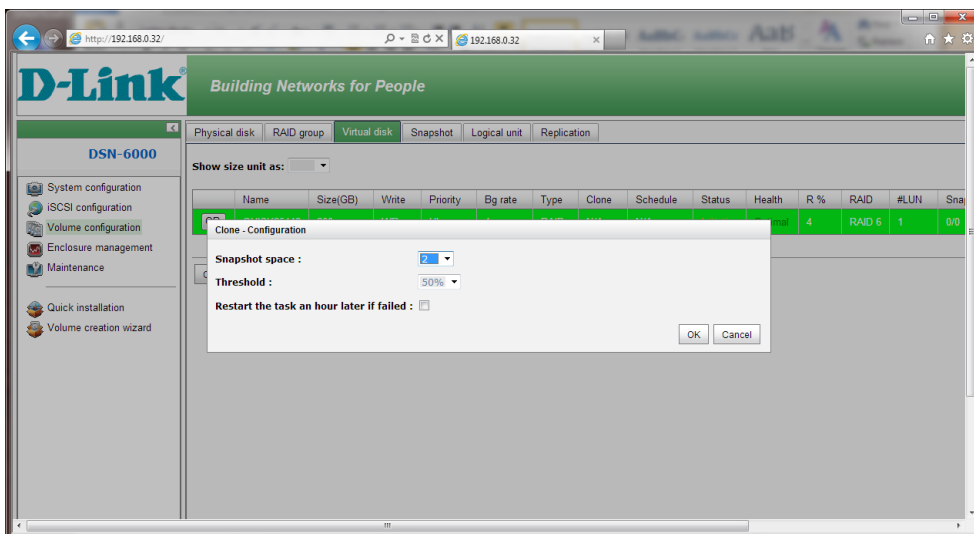
Create New RAID Group:



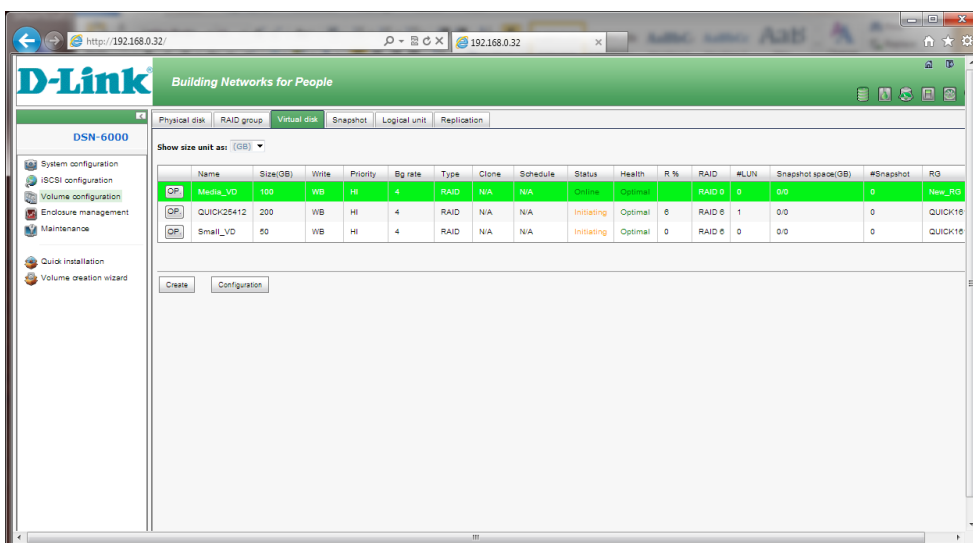
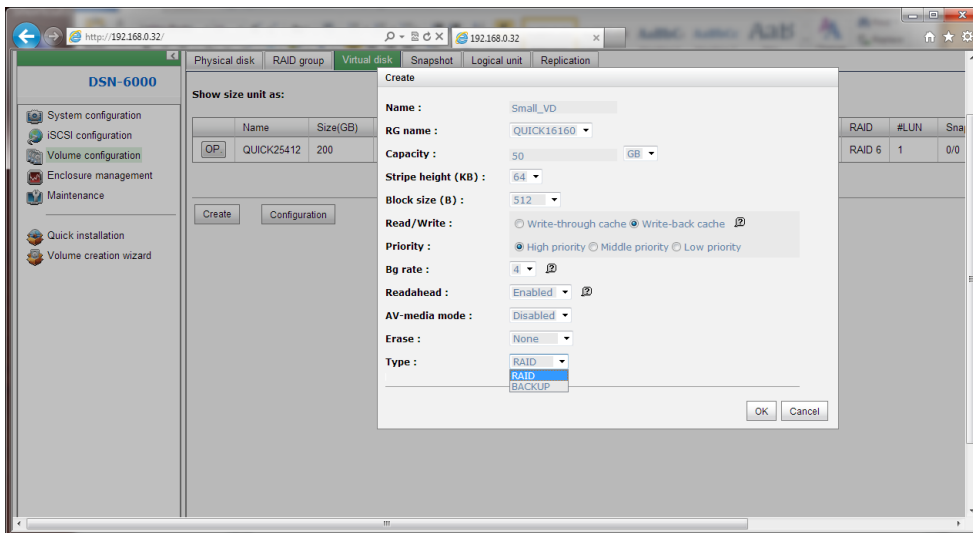
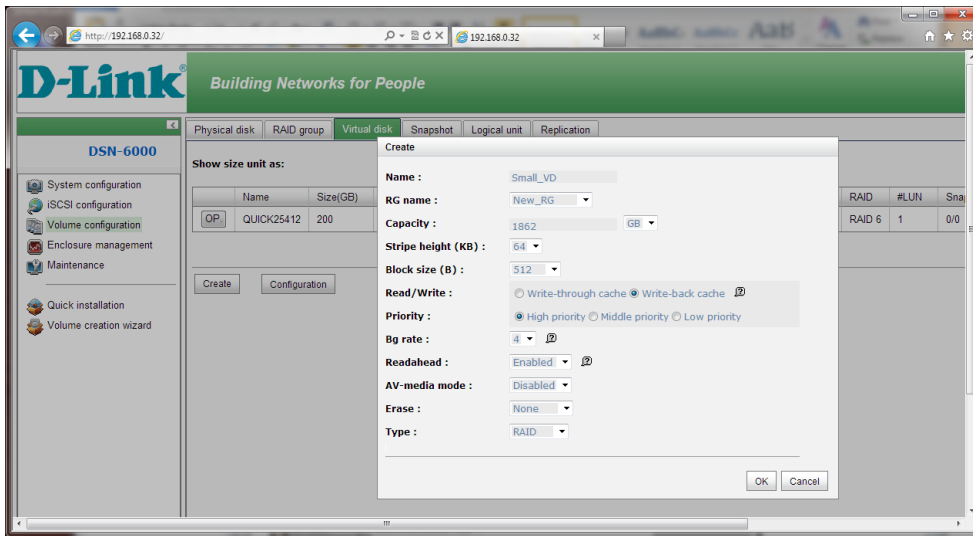


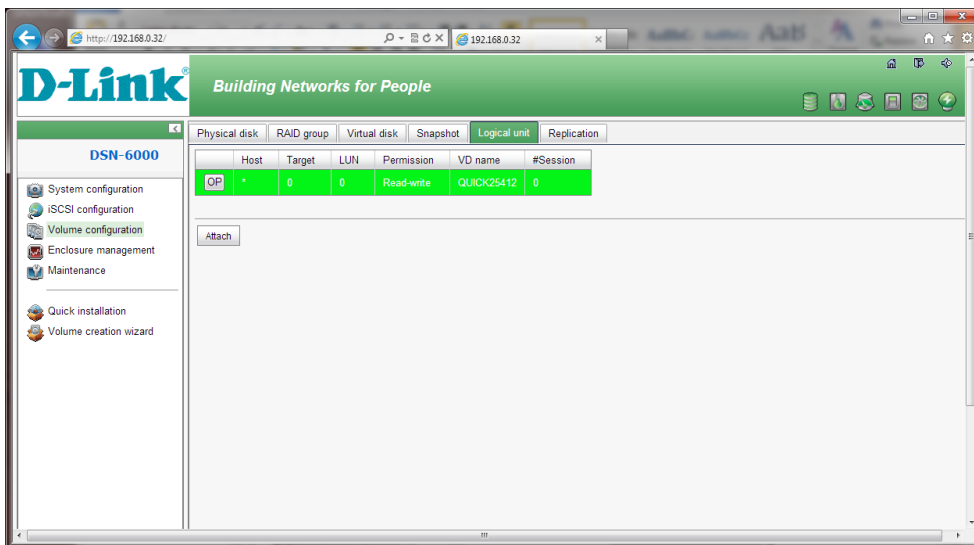
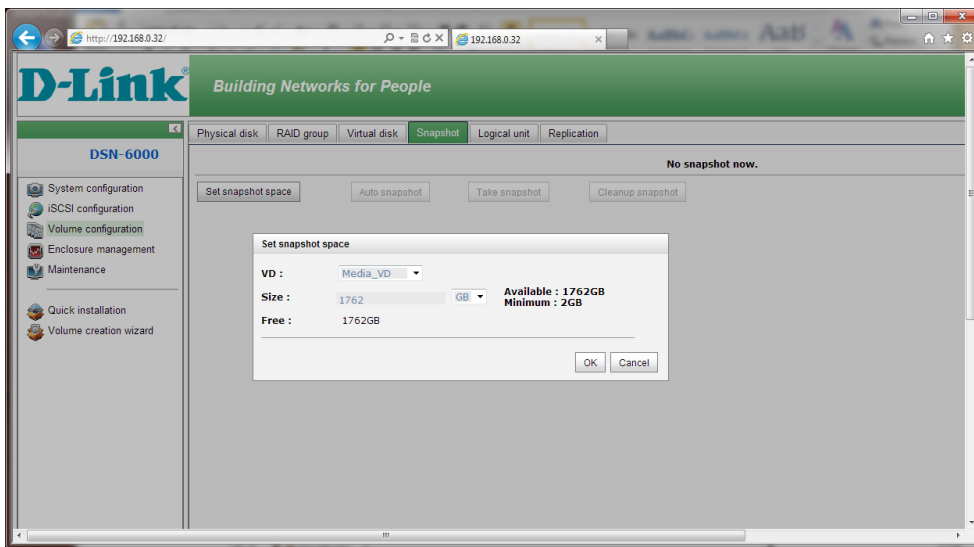
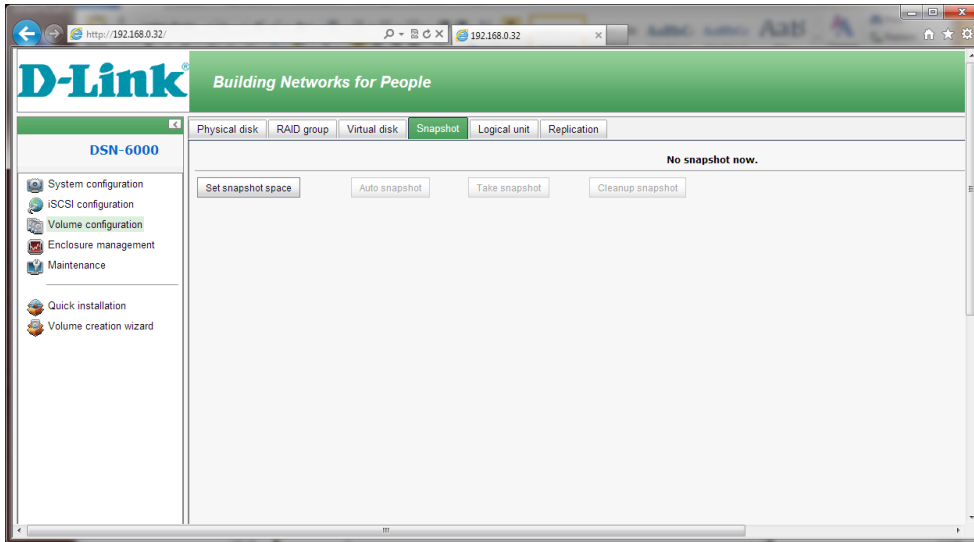


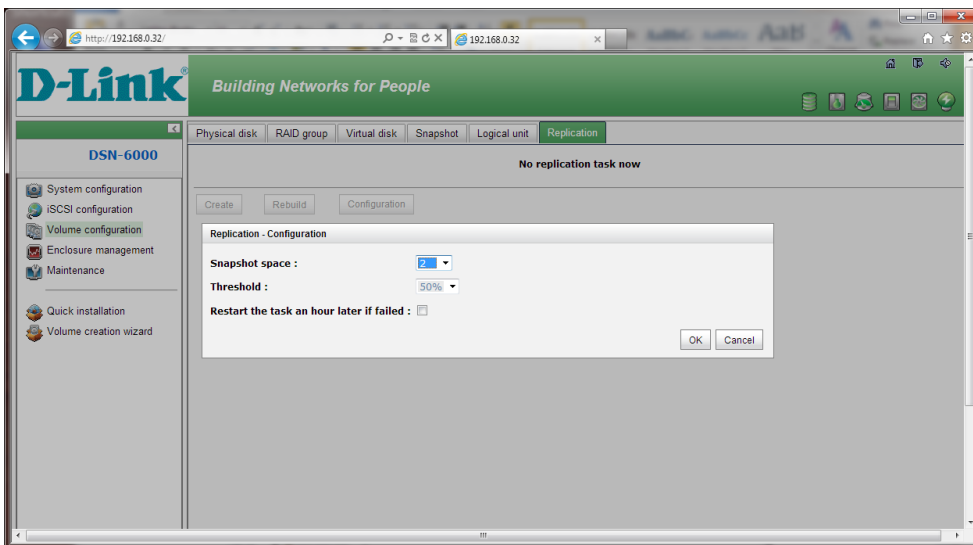
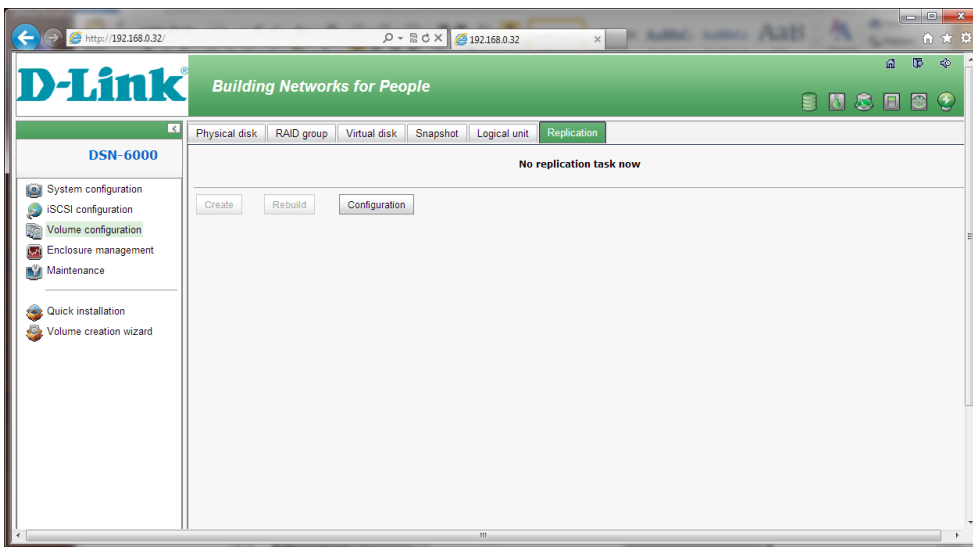
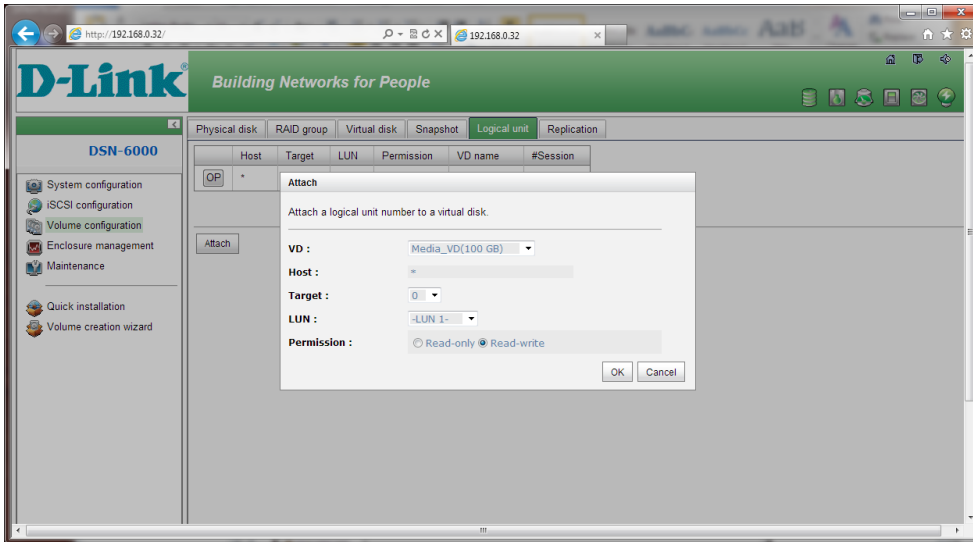
Configuration:



Create Virtual Disk:







http://192.168.0.32/ 192.168.0.32

D-Link Building Networks for People

Hardware monitor | UPS | SES | S.M.A.R.T.

DSN-6000

- System configuration
- ISCSI configuration
- Volume configuration
- Enclosure management
- Maintenance
- Quick installation
- Volume creation wizard

Show information for: Local - Temperature: (C)

Controller 1

Type	Item	Value	Status
Voltage	Onboard +1.2V	+1.20 V (min = +1.08 V, max = +1.32 V)	OK
Voltage	Onboard +3.3V	+3.39 V (min = +3.04 V, max = +3.56 V)	OK
Voltage	Onboard +5V	+5.14 V (min = +4.60 V, max = +5.40 V)	OK
Voltage	Onboard +12V	+12.16 V (min = +11.04 V, max = +12.96 V)	OK
Voltage	Onboard +1.8V	+1.84 V (min = +1.62 V, max = +1.98 V)	OK
Temperature	Core Processor	+40.5 (C) (hyst = +0.0 (C), high = +80.0 (C))	OK
Temperature	ISCSI NIC 1	+38.0 (C) (hyst = +0.0 (C), high = +65.0 (C))	OK
Temperature	ISCSI NIC 2	+36.5 (C) (hyst = +0.0 (C), high = +65.0 (C))	OK
Temperature	SAS Controller	+37.0 (C) (hyst = +0.0 (C), high = +65.0 (C))	OK
Temperature	SAS Expander	+32.0 (C) (hyst = +0.0 (C), high = +65.0 (C))	OK
Battery	Battery Backup Module	68 %	OK

BPL

Type	Item	Value	Status
Voltage	PSU +5V	+5.14 V (min = +4.60 V, max = +5.40 V)	OK
Voltage	PSU +12V	+12.23 V (min = +11.04 V, max = +12.96 V)	OK
Voltage	PSU +3.3V	+3.44 V (min = +3.04 V, max = +3.56 V)	OK
Temperature	Location 1	+33.0 (C) (hyst = +0.0 (C), high = +55.0 (C))	OK
Temperature	Location 2	+26.5 (C) (hyst = +0.0 (C), high = +55.0 (C))	OK
Temperature	Location 3	+26.5 (C) (hyst = +0.0 (C), high = +55.0 (C))	OK
Power Supply	PSU1	N/A	OK
Power Supply	PSU2	N/A	OK
Cooling	FAN1	10546 RPM	OK
Cooling	FAN2	11250 RPM	OK
Cooling	FAN3	11250 RPM	OK
Cooling	FAN4	10546 RPM	OK

Auto shutdown:

If 'Auto shutdown' has been checked, the system will shutdown automatically when voltage or temperature is out of the normal range.

http://192.168.0.32/ 192.168.0.32

D-Link Building Networks for People

Hardware monitor | UPS | SES | S.M.A.R.T.

DSN-6000

- System configuration
- ISCSI configuration
- Volume configuration
- Enclosure management
- Maintenance
- Quick installation
- Volume creation wizard

Show information for: JBOD 1 (D-Link DSN-6020 v1.0.2) 14D64D869090 - Temperature: (C)

Controller 1 (50013780049046BD)

<< first < prev 1 next > last >>

Type	Item	Value	Status
Voltage	PSU +3.3V(DSN6000)	3.44 V	OK
Voltage	PSU +5V(DSN6000)	5.10 V	OK
Voltage	PSU +12V(DSN6000)	12.19 V	OK
Voltage	+1.0V (Onboard)	0.98 V	OK
Voltage	+1.8V (Onboard)	1.81 V	OK
Voltage	+3.3V (Onboard)	3.31 V	OK
Voltage	+5V (Onboard)	5.07 V	OK
Voltage	+12V (Onboard)	12.08 V	OK
Temperature	Location 1(DSN6000)	29.0 (C)	OK
Temperature	Location 2(DSN6000)	26.0 (C)	OK
Temperature	Location 3(DSN6000)	26.0 (C)	OK
Temperature	Onboard 1	70.0 (C)	OK
Temperature	Onboard 2	38.0 (C)	OK
Temperature	Onboard 3	36.0 (C)	OK
Power Supply	PSU 1	N/A	OK
Power Supply	PSU 2	N/A	OK
Cooling	FAN 1	10220 RPM	OK
Cooling	FAN 2	10220 RPM	OK
Cooling	FAN 3	10220 RPM	OK
Cooling	FAN 4	10220 RPM	OK

<< first < prev 1 next > last >>

Controller 2 (5001378004903EBD)

<< first < prev 1 next > last >>

Type	Item	Value	Status
Voltage	PSU +3.3V(DSN6000)	3.44 V	OK
Voltage	PSU +5V(DSN6000)	5.10 V	OK
Voltage	PSU +12V(DSN6000)	12.19 V	OK

Browser: http://192.168.0.32/

D-Link Building Networks for People

Hardware monitor | **UPS** | SES | S.M.A.R.T.

DSN-6000

- System configuration
- iSCSI configuration
- Volume configuration
- Enclosure management**
- Maintenance
- Quick installation
- Volume creation wizard

The system supports and communicates with smart-UPS of APC.
Choose Smart-UPS for APC, None for other vendors or no UPS.

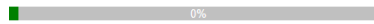
UPS type :

Shutdown battery level (%) :

Shutdown delay (s) :

Shutdown UPS :

Status :

Battery level :  0%

Browser: http://192.168.0.32/

D-Link Building Networks for People

Hardware monitor | UPS | **SES** | S.M.A.R.T.

DSN-6000

- System configuration
- iSCSI configuration
- Volume configuration
- Enclosure management**
- Maintenance
- Quick installation
- Volume creation wizard

SCSI Enclosure Services(SES).
One of the enclosure management standards. Please enable or disable the management of SES.

Browser: http://192.168.0.32/

D-Link Building Networks for People

Hardware monitor | UPS | SES | **S.M.A.R.T.**

DSN-6000

- System configuration
- iSCSI configuration
- Volume configuration
- Enclosure management
- Maintenance**
- Quick installation
- Volume creation wizard

Self-Monitoring Analysis and Reporting Technology(S.M.A.R.T).
A diagnostic tool for hard drives to deliver warning of drive failures in advance. S.M.A.R.T. provides users chances to take actions before possible drive failure.

Show information for: Temperature:

Slot	HDD type	Read error (rate)	Spin up (time)	Reallocated sector (count)	Seek error (rate)	Spin up (retries)	Calibration (retries)	Tempera
1	SATA2	200(51)	151(21)	200(140)	100(0)	100(0)	100(0)	39
2	SATA2	200(51)	132(21)	200(140)	200(0)	100(0)	100(0)	36
3	SATA2	100(51)	66(11)	100(10)	253(51)	100(51)	100(0)	30

Browser: http://192.168.0.32/ | 192.168.0.32

D-Link Building Networks for People

DSN-6000

- System configuration
- iSCSI configuration
- Volume configuration
- Enclosure management
- Maintenance
- Quick installation
- Volume creation wizard

System information | Event log | Upgrade | Firmware synchronization | Reset to factory default | Import and export | Reboot and shutdown

Item	Information
CPU type	XSC3-IOP8134x Family rev 9 (v5i)
System memory	ECC Unbuffered DDR-II 4096MB
Firmware version	DSN-6000 2.0.1 (build 201102111500)
Serial number	14D64D869070 (Controller 1 : 500137800390FDD8 , Controller 2 : 5001378003910758)
Backplane ID	DSN6000
JBOD serial no.	JBOD 1 Serial number 14D64D869090 (Controller1: 50013780049046BD Controller2: 5001378004903EBD)
JBOD status	Normal
Status	Normal
Replication	Not activated.

Browser: http://192.168.0.32/ | 192.168.0.32

D-Link Building Networks for People

DSN-6000

- System configuration
- iSCSI configuration
- Volume configuration
- Enclosure management
- Maintenance
- Quick installation
- Volume creation wizard

System information | Event log | Upgrade | Firmware synchronization | Reset to factory default | Import and export | Reboot and shutdown

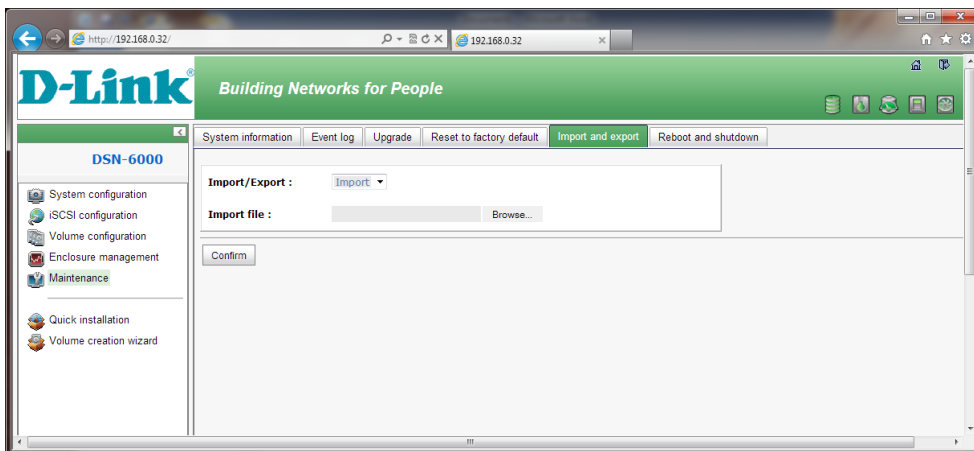
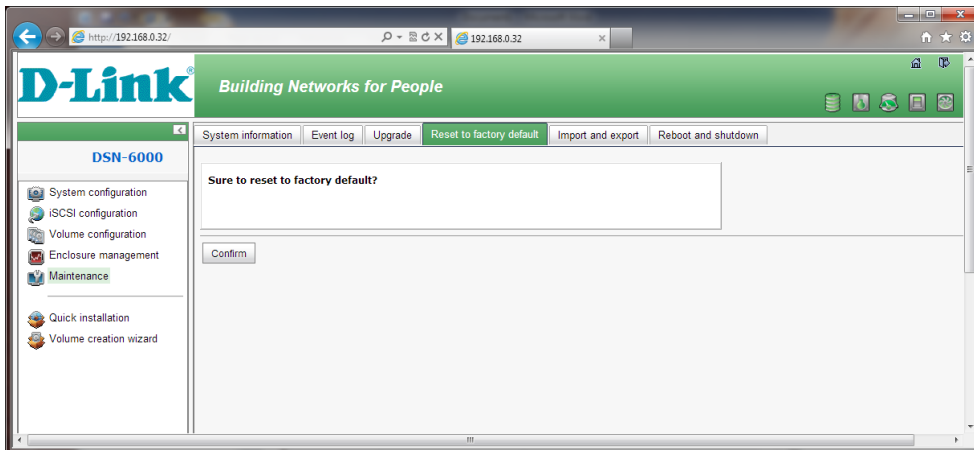
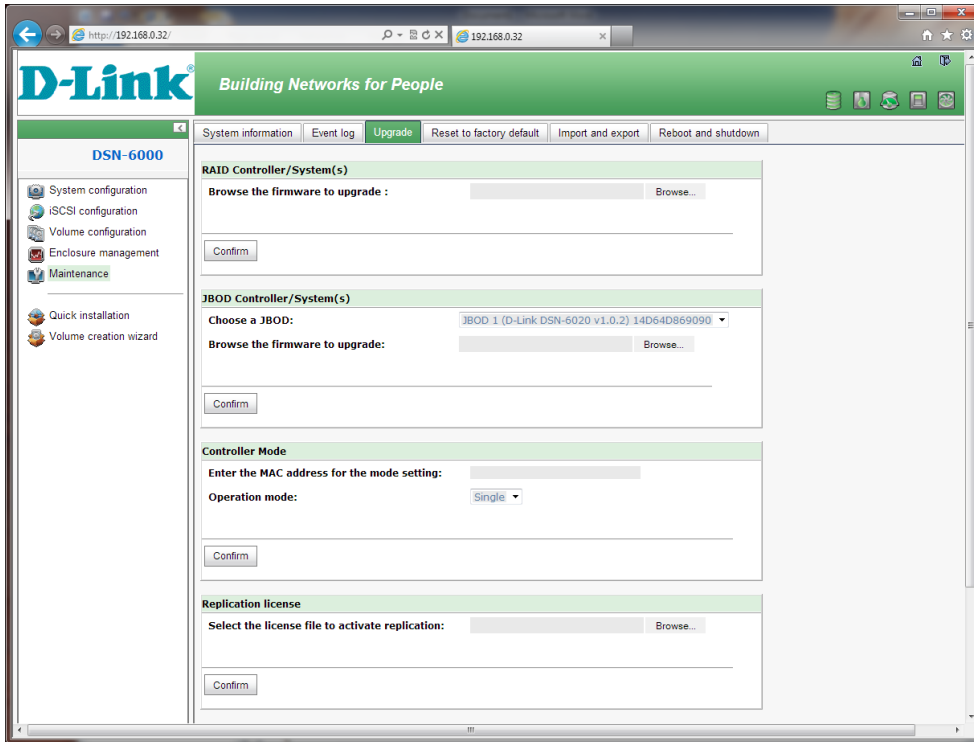
Select event level of displayed event log

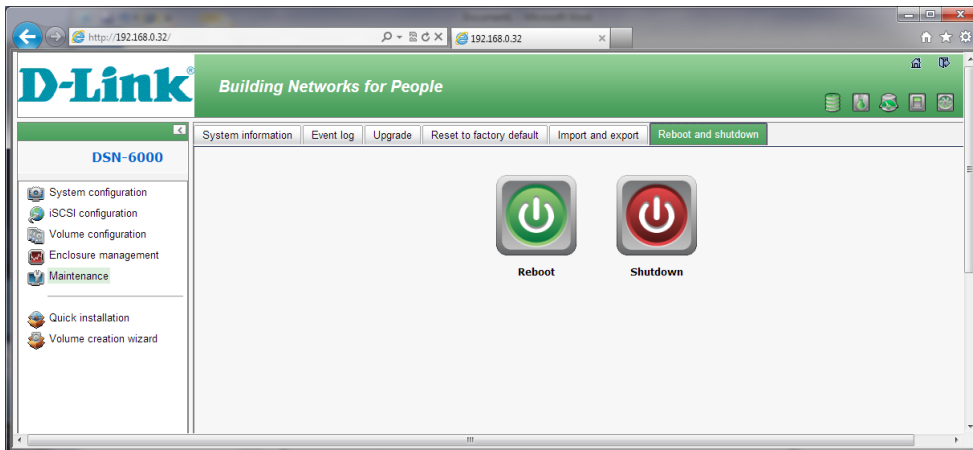
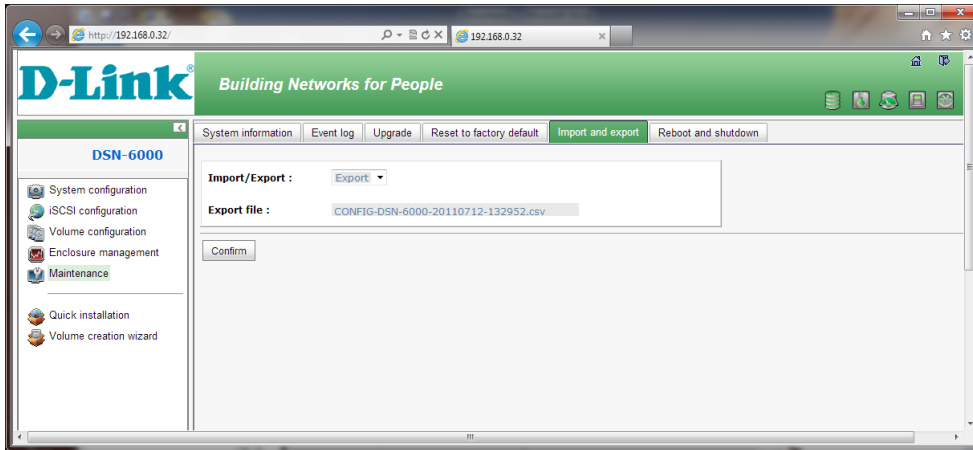
INFO WARNING ERROR

<< first < prev 1 next > last >>

Type	Time	Content
INFO	Tue, 12 Jul 2011 13:48:53	[CTR1] admin login from 192.168.0.7 via Web UI
INFO	Tue, 12 Jul 2011 13:46:07	[CTR2] Controller(50013780049046bd) of JBOD 1 is inserted into system
INFO	Tue, 12 Jul 2011 13:46:05	[CTR1] Controller(5001378004903ebd) of JBOD 1 is inserted into system
INFO	Tue, 12 Jul 2011 13:46:05	[CTR1] Controller(50013780049046bd) of JBOD 1 is inserted into system
INFO	Tue, 12 Jul 2011 13:46:06	[CTR2] Controller(5001378004903ebd) of JBOD 1 is inserted into system
INFO	Tue, 12 Jul 2011 13:45:56	[CTR2] Battery backup feature is disabled.
INFO	Tue, 12 Jul 2011 13:45:55	[CTR1] Battery backup module is detected
INFO	Tue, 12 Jul 2011 13:45:55	[CTR1] Battery backup feature is enabled.
INFO	Tue, 12 Jul 2011 13:45:55	[CTR2] ECC memory is installed
INFO	Tue, 12 Jul 2011 13:45:54	[CTR1] ECC memory is installed

<< first < prev 1 next > last >>





iSCSI:

