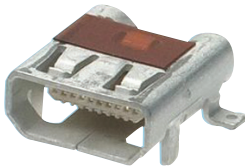


Connectors - Audio & Video

	Page		Page
Digital Video/Audio	1577	Jack Type – Other	1596
Digital Types	1581	Loudspeaker	1596
DIN Type – Circular	1583	Multipole-Circular	1598
DIN Type – Miniature Circular	1582	Phono (RCA) Type	1599
Jack Type – 2.5mm	1587	Scart Type	1601
Jack Type – 3.5mm	1588	XLR Type – Miniature	1610
Jack Type – 6.35mm (1/4")	1592		

Digital Video / Audio

Micro HDMI Type D Socket



The connector offers all the advantages of the HDMI 1.4 specification and is half the size of the current Mini connector. The miniature footprint and low-profile height offer significant space savings.

- Orientation: Horizontal
- Max current per contact: 0.8A
- Flammability: 94V-0
- Contact plating: Gold



Mounting	Mftrs.		Price Each			
	List No.	Order Code	1+	10+	50+	100+
Surface Mount Right Angle	46765-0001	179-7822				
Surface Mount	46765-1001	179-7823				
Hybrid	46765-2001	179-7824				

Type D HDMI Micro Sockets

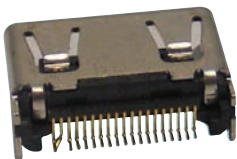


- Withdraw force: 5-25N
- Insulation resistance: 100MΩ
- LLCR: 10mΩ



Mounting	Mftrs.		Price Each					
	Type	List No.	Order Code	1+	10+	100+	250+	500+
Top		101-C0120-01928	186-0539					
Middle		101-C0100-01917	186-0540					
Reverse		101-C0260-01929	186-0541					

Type C HDMI Mini Connector DC2 Series



- 0.4mm pitch, 19 position, compact receptacle.
- Impedance-matching design compliant with high-speed transmission.
- Pin assignment designed for low cross-talk.
- Cable side is Category 2 certified HDMI compliant.



Specifications:-			
Current Per Contact	0.5A	Dielectric Withstanding Voltage	40VAC r.m.s. (1 min.)
Contact Material	Copper Alloy	Contact Plating	Gold over Nickel
Material Insulator	Heat Resistant Plastic	Impedance	100ohm
Mating Cycles	5000	Operating Temp.	-20°C to 85°C

No. of Ways	Mftrs. List No.		Price Each				
		Order Code	1+	10+	50+	100+	150+
19	DC2R019JA2R1000	169-5660					

Mini HDMI Connectors Type C



170-8473 170-8474 170-8475 170-8476 170-8477 170-8479

- 0.4mm pitch, 19 position, mini HDMI Connectors
- Type C connectors, HDMI 1.3 specification
- Solderable nickel plated shell
- Dimensions - 10.5 x 2.5mm (sockets), 10.42 x 2.42mm (plugs)

Specifications:-			
Current Rating	0.5A	Dielectric Withstanding Voltage	500VAC r.m.s.
Insulation Resistance		Operating Temp.	-20°C to 85°C
Contact Material	Brass (Socket) / Phosphor Bronze (Plugs)	Contact Plating	Gold Flash

Description	Order Code	Price Each				
		1+	10+	100+	500+	1K+
Socket, SMT Type Solder Tail	170-8473					
Socket, Through Hole Solder Tail	170-8474					
Socket, Kinked Through Hole Solder Tail	170-8475					
Plug, without PCB	170-8476					
Plug, with PCB	170-8477					
Plug, C/M to A/F PCB	170-8479					

HDMI Connectors and cable assemblies



Current Rating	0.5 A
Insulation Resistance	Mohm-m
Voltage Rating	40 AC
Operating Temperature	-25°C to 85°C

Description	Order Code	Price Each		
		1+	10+	50+
Headers				
SMT Right Angle	142-8259			
SMT Right Angle with flange	142-8260			
Through Hole R/A with flange	142-8262			
SMT Vertical with flange	142-8264			
Cable Assembly				
1.5M	142-8265			
2M	142-8266			
3M	142-8267			
10M	142-8268			
15M	142-8269			
Adapter				
HDMI Female to DVI Male	142-8271			
HDMI Male to DVI Female	142-8272			
HDMI Female to HDMI Female	142-8274			
HDMI Female to HDMI Female R/A	142-8276			
Extender	142-8270			



INTELLIGENT ONLINE BUYING SYSTEM PROVIDING

Complete cost control, reduced administration time, visibility of your spend, flexibility and personalised to your company's needs.
farnell.com/ibuy

The first online technical portal for design engineers
 Log on, research, refine and design



powerCON TRUE1

Lockable mains voltage connector

Mains connector according to IEC 60320 | VDE and UL certified | Single-phase system for 16 A / 250 V / VDE respectively 20 A / 250 V / UL | Integrated twist-lock | Complete system including inlet and outlet cable connector and chassis | IP65 – water resistant ready-made cord sets



High Definition Multimedia Interface (HDMI) Connector System



The new HDMI cable assemblies, adaptors and connectors provide an uncompressed digital link between consumer electronics equipment such as DVD players, set-top boxes and audio video monitors such as plasma display screens for high definition TVs.

- Eliminates the confusion of multiple cables used to connect current A/V systems
- 5 Gbps supports high definition video and multichannel digital audio in a single cable
- 10,000 mating cycles
- DVI backward compatible
- Fully shielded
- Lead-free plating

* 10 and 15 metre cable lengths are not HDMI 1.1 compliant, however should function at 800 x 600 or 1024 x 768 resolution.

338152

Mfrs. List No.	Cable Length	Order Code	1+	10+	50+
HDMI to HDMI Cable					
88768-9800	1m	874-9981			
887689810	2m	489-5630			
887689820	3m	489-5642			
88768-9830	5m	874-9990			
88767-1010	10m*	875-0009			
88767-1020	15m*	875-0017			
DVI to HDMI Cable					
88768-3500	1m	875-0025			
88768-3510	2m	489-5654			
88768-3520	3m	489-5666			
88768-3530	5m	875-0033			
88767-0910	10m*	875-0041			
88767-0920	15m*	875-0050			
Mfrs. List No.	Description	Order Code	1+	10+	50+
Adaptors					
88767-0600	HDMI (F) to DVI (M)	121-1007			
88764-2000	HDMI (M) to DVI (F)	121-1008			
Headers, R/A					
5002541927	Standard Type	867-2822			
500254-1931	Flange Type	112-5352			
Receptacles, R/A, Through Hole					
47151-1001	Standard	151-6661			
47266-0001	Black	151-6663			

HDMI Type D-to-Type A Cable Assemblies



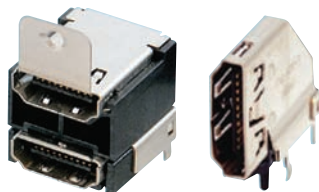
- Satisfies HDMI 1.4 Specification mechanical and electrical requirements
- Half the size of the current Type C HDMI connectors

Material - Resin: Polyethylene, PVC
 Lock to Mating Part: Yes
 Circuits (Loaded): 19
 Voltage: 30V Max.

601454

Length	Mfrs. List No.	Order Code	1+	5+	10+	50+	500+
Male Type D to Male Type A							
1m	68786-0001	178-6335					
2m	68786-0003	178-6338					
Male Type D to Female Type A							
0.2m	68786-0007	178-6340					

HDMI Socket



Dual Stacked

Single Flag

- Right angle through hole
- Housing: UL94V-0 flammability rating
- Contact material: Copper Alloy
- Contact plating: Gold

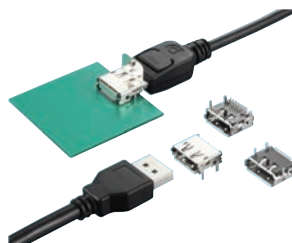


621576

Description	Mfrs. List No.	Order Code	1+	10+	50+	100+
Dual Stacked	1888811-1	179-4837				
Single Flag	2007435-1	181-6577				

Display Port Connectors

DP1 Series



- Compatible with the next-generation flat panel interface standard DisplayPort 1.1a.
- Secure shielding with metallic shell, VESA certified
- Board-side receptacle is available as a reverse SMT type for reverse mounting, angle SMT type with flange, and standard angle SMT
- Mating height is 6.5mm

Specifications:-

Current Rating	0.5A	Withstanding Voltage	VACrms/min.
Contact Plating	Gold	Contact Resistance	50mΩ
Insulation Resistance	100MΩ	No. of Contacts	20
Durability	10000 cycles	Applicable Wire	Twinax cables (30-32 AWG)
Operating Temp.	-20°C to 85°C		

528156

Mfrs. List No.	Order Code	1+	10+	50+	100+	400+
R/A SMT Standard Type without Flange						
DP1RD20JQ1R400	205-7447					
R/A SMT Reverse Type without Flange						
DP1RD20JQ2R400	167-9719					
R/A SMT Standard Type with Flange						
DP1R020JQ3	167-9720					

Mini Display Port Receptacles



- Mounting: Through hole PCB
- orientation: Right Angle
- Shell material: Stainless steel
- Contact material: Copper Alloy



638323

Contact Plating	Mfrs. List No.	Order Code	1+	10+	50+	100+
Gold flash	64L020S-301N-B	189-5013				
30µm* Gold	64L020S-331N-B	189-5014				

Display Port Connectors



- Enable a digital display connection as a viable alternative to VGA
- Display port handles digital transfers at rates up to 10.8Gbps
- 2560 x 1600, 2048 x 1536 high resolution
- Deep color 30/36-bit
- Digital audio and video
- Supports RSA for digital content protection
- Applications: PC, projector, DVD player, set top box, and LCD TV/PDP TV

Specifications:-

Contact Plating	Gold over Nickel	Shell Plating	Nickel
Termination Method	Solder	No. of Contacts	20

528462

Type	Order Code	1+	10+	50+	100+	500+
Standard Display Ports						
Receptacle, W/O Flange, W/O Top Spring, with Pole, W/O Rib						
SMT	168-6453					
Receptacle, with RIB, with Spring, with Pole, 2 Group DIP Tail						
DIP	168-6454					
Receptacle, W/O Flange, W/O feet, with Pole						
Cable	168-6455					
Plug, with Latch Hole, with Hood						
Cable	168-6456					

Display Port Connectors - continued

Type	Order Code	Price Each				
		1+	10+	50+	100+	500+
Plug, with Latch Hole, W/O Hood						
Cable	168-6457					
Mini Display Ports						
Plug, with Hood						
Cable	183-3487					
Right Angle						
THT	189-5014					
Right Angle Gold Flash Plating						
THT	189-5013					

DMS-59™ System Interface Connectors and Cable Assemblies



Molex's DMS-59™ features the Molex LFH™ (Low Force Helix) contacts aimed at the industry wide standard for multi-head graphic card applications. The DMS-59 is based on the 60-circuit LFH using circuit #58 as the voided pin for the keying mechanism. The connector system consists of a 59-circuit receptacle and plug cable assemblies offering DMS-59 to various combinations of VGA,

DVI-D and DVI-I, meeting requirements for impedance, cross-talk and Skew.

- Void pin #58 ensures exclusive mating
- Low force Helix (LFH) contact interface
- 1.27mm pitch
- Various cable assembly configurations
- Applications include: Monitors, displays, graphic cards etc.
- VESA selected

454753

Description	Length	Mfrs. List No.	Order Code	Price Each		
				1+	10+	+
DMS-59™ Receptacle, SMC Through Hole						
90° Receptacle		75134-1001	132-2865			
Cable Assemblies (Male - Female)						
DMS to 2 x VGA	0.2m	88768-5200	132-2866			
DMS to 2 x DVI-I	0.2m	88768-5300	132-2867			
DMS to DVI-I + VGA	0.2m	88768-5400	132-2868			

MicroCross™ DVI Cables and Adaptors



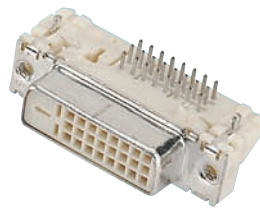
- Supports **TMDS** (Transmission Minimised Differential Signalling)
- Meets the Intel® **DDWG** (Digital Display Working Group) specification
- Crossing ground blade design provides video bandwidth of 1.7Gbps per differential pair for digital interface and 2.4GHz for analog interface
- Range of adaptors available to allow backwards compatibility to existing displays

Single link can support UXGA (1600 x 1200) displays
 Dual link can support QXGA (2048 x 1536) displays
DVI-I version supports Analog and Digital (TMDS) transmission
DVI-D supports 1.6 Gbit/sec. TMDS transmission rates.
DVI-A version supports 2.5GHz Analog RGB bandwidths.

Mfrs. List No.	Description	Order Code
88741-8000	DVI-Digital to DVI-Digital Single Link 2.0m Cable	997-3893
88741-8020	DVI-Digital to DVI-Digital Single Link 5.0m Cable	871-8261
88741-8100	DVI-Digital to DVI-Digital Dual Link 2.0m Cable	972-7850
88741-8120	DVI-Digital to DVI-Digital Dual Link 5.0m Cable	871-8270
88741-8300	DVI-Analogue to VGA 2.0m Cable	997-3915
887418700	DVI-Analogue Plug to VGA Receptacle	997-3940
88741-9000	DVI-Digital/Analogue to DVI Digital /Analogue Single Link	997-3974
887419100	DVI-Digital/Analogue Receptacle to VGA Plug	997-3982

210075

Order Code	Price Each		Order Code	Price Each	
	1+	10+		1+	10+
997-3893			997-3915		
871-8261			997-3940		
972-7850			997-3974		
871-8270			997-3982		

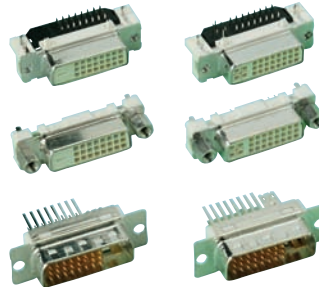


- DVI PCB receptacles approved by the DDWG
- Suitable for both digital and analogue transmission (9.9Gbps and 2.5Ghz)
- Mates with both Molex DVI cables and adaptors
- Available in both right angle and vertical configurations

227395.411388

Description	Mfrs. List No.	Order Code	Price Each	
			1+	10+
DVI-I Right angle	743201004	973-4139		
DVI-I Vertical	743203004	973-4147		
DVI-D Right angle	743204004	973-4163		
DVI-I Right angle forklock	74320-9014	101-2227		

DV2 Series I/O Connectors



The DV2 Series was designed to meet the needs for higher performance digital/analog interface between computer graphics input devices and computer monitor. The DV2 supports Transmission Differential Signalling (TMDS) and conforms to the standard (DDWG) Digital Display Working Group.

Current Rating Signal	3A	Dielectric Voltage	500V AC rms
Current Rating Coax	1A	Contact Resistance	25mΩ max
Insulation Resistance	1000MΩ	Wire Size - Signal Contact	28 AWG
Operating Temperature	-40°C to +85°C		

Mfrs. List No.	Description	Order Code
DV2R024N11E	Receptacle R/A with Screwlock to DVI-D 24 Pin	996-5149
DV2R029N11E	Receptacle R/A with Screwlock to DVI-I 24+4 Pin	996-5157
DV2R024UA1	Receptacle Straight with Screwlock to DVI-D 24 Pin	200-7942
DV2R029UA1	Receptacle Straight with Screwlock to DVI-I 24+4 Pin	200-7943
DV2P024M11E	Straight Cable Plug connect DVI-D 24 Pin	996-5181
DV2P029M11E	Straight Cable Plug connector DVI-I 29 Pin	996-5190

233305

Mfrs. List No.	Order Code	Price Each		Mfrs. List No.	Order Code	Price Each	
		1+	10+			1+	10+
DV2R024N11E	996-5149			DV2R029UA1	200-7943		
DV2R029N11E	996-5157			DV2P024M11E	996-5181		
DV2R024UA1	200-7942			DV2P029M11E	996-5190		

DVI Cable Assembly



- DVI-I supports Analog and digital (TMDS) transmission
- Industry standard Interface
- Board mount connector with interconnecting cable assembly
- For all monitor and video interconnections

Mfrs. List No.	Description	Order Code
1653929-2	2.0m DVI-I to DVI-I Cable	152-2193

496154

Order Code	Price Each		
	1+	10+	50+
152-2193			

FREE GLOBAL LEGISLATION SUPPORT



RoHS, REACH, WEEE, ErP, Batteries Directive - latest updates, free white papers and live online Q&A at element14.com/legislation

Digital Types

TOS-Link Optical Plugs - Self Terminating



Self-terminating TOS-Link type plugs for custom optical, digital audio cables.

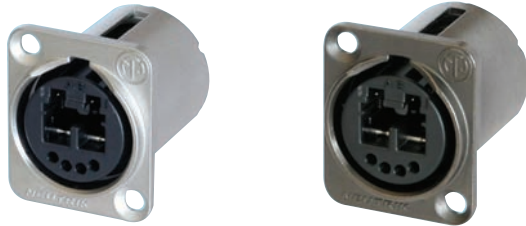
- Plugs are supplied with soft dust caps for protection prior to use
- Cable retained in the plug by means of a two pronged tape clamp
- Standard, single sheathed plastic optical cable with jacket and $\varnothing 2.2\text{mm}$ OD

246843

Description	Order Code	Price Each			
		1+	10+	20+	50+
TOS-Link Plug	382-4524				
Optical Cable - 50m Drum	382-4536				

OpticalCon® Panel Connectors

NO2-4FD Series



Hard Nickel Plated

Ruthenium Plated

OpticalCon™ panel mounted fibre optic connectors are ruggedized all metal, dust and dirt protected chassis connectors for reliable optical connections. Based on a standard optical LC-Duplex connection with design improvements to ensure a safe and rugged connection the connectors are compatible with both cost effective standard LC connectors for permanent connections, or Neutrik's rugged OpticalCon® cable connectors for mobile applications.

Optical Connector:	LC-Duplex	Dielectric Strength:	1500V DC
Fibre Types:	Multimode, Singlemode PC & APC	Operating Temperature:	-30°C to +80°C
Electrical Contacts:	4	Lifetime:	>1000 mating cycles
Rated Current:	3A	Dimensions (WxHxD):	26.0 x 31.0 x 32.4 mm
Rated Voltage:	50V AC		

444671

Mfrs. List No.	Shell	Order Code	Price Each		
			1+	3+	5+
4-Pole Chassis Sockets					
NO2-4FDW	Hard Nickel	164-3864			
NO2-4FDW-R	Hard Nickel	164-3865			
NO2-4FD-R	Ruthenium	125-6934			
4-Pole Chassis Sockets with Shell Ground Contact					
NO2-4FDW-1	Hard Nickel	164-3866			

RJ45 etherCon Plug



The set includes a cable plug carrier offering a robust metal shell with Push-Pull locking system. The set can accommodate STP and UTP cables.

NEW

- CAT6 compliant - data rates upto 10Gbit/s
- High noise immunity and EMI protection
- IP65 rating
- Wire range: 28-22 AWG
- Contact material: Bronze with gold plating

644196

Gender	Mfrs. List No.	Order Code	Price Each			
			1+	10+	50+	100+
Plug	NE8MC6-MO	200-8250				

Ethercon RJ45 Type



- Robust RJ45 data connector
- For harsh and demanding environments in audio and stage applications
- Complies with Cat 5 requirements
- Chassis connector mates with both Neutrik connector carrier with inserted RJ45 plug and sole standard RJ45 plug

Cable Connector		Receptacle	
Mating Cycles	1000	Number of Contacts	8
Material		Rated Current	1.5A
Housing		Dielectric Strength	1000V
Strain Relief Clamp	POM	Contact Resistance	10m
Bushing	PA6	Insulation Resistance	500
Temperature Range	-30°C to 80°C	Housing Mat	PBTP
		Contact Mat	CuSn
		Contact Plating	Gold

452103.460825

Mfrs. List No.	Order Code	Price Each			
		1+	10+	50+	100+
Cable Connectors					
Nickel	NE8MC	388-6244			
Black Cr	NE8MC-B	131-0135			
Nickel, Weatherproof	NE8MC-1	131-0139			
Black Cr, Weatherproof	NE8MC-B-1	131-0140			
Neutrik 'A' Receptacles - All Plastic					
PCB Mount, Horizontal	NE8FAH	388-6256			
PCB Mount, Vertical	NE8FAV	120-2031			
IDC Terminals	NE8FAVYK	388-6268			
Neutrik 'B' Receptacles - Nickel Ring					
PCB, Horiz, with LEDs	NE8FBH-LED	131-0141			
Neutrik 'D' Receptacles - Full Nickel Flange					
PCB Mount, Vertical	NE8FDV	489-3062			
IDC Terminals	NE8FDV-YK	489-5009			
110 Punch Down Terms	NE8FDV-Y110	456-0814			
Nickel, Feed Thru Terms	NE8FDP	120-2032			
Black Cr, Feed Thru Term	NE8FDP-B	727-0379			

EtherCon® RJ45 Feedthrough Coupler



NE8FF



- RJ45 coupling for extension line applications etc.
- Compliant with Cat5 (TIA/EIA and ISO/IEC Standards)
- Can be used with both EtherCon (NE8MC: 388-6244) and conventional RJ45 connectors
- Durable, resistant metal housing - ideal for rough operating conditions

Mfrs. List No.	Order Code	Price Each			
		1+	10+	50+	100+
NE8FF	120-2033				

334039

USB Adaptor



- Ideal for audio networking and integration of computerbased equipment into audio systems
- USB 2.0 gender changer type A-B (B-A)
- Reversible insert offering type A or B on front or rear end
- Universally accepted standard D-shape housing

601260

Mfrs. List No.	Colour	Order Code	Price Each		
			1+	10+	25+
NAUSB-W	Silver	176-0681			
NAUSB-W-B	Black	176-0682			

TROUBLESHOOTING TIPS

Chat online to one of our technical engineers at farnell.com

Digital Types - continued

BNC Bulkhead Jacks

NBB75 Series



NBB75DFIB / NBB75DFGB



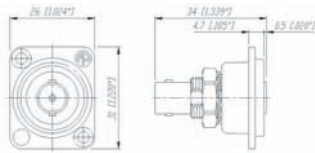
NBB75FI



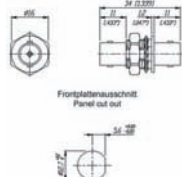
NBB75SI



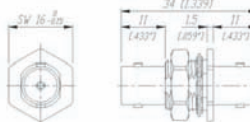
NBB75FG



Mechanical Drawing NBB75DFI / DFG



Mechanical Drawing NBB75FG



Mechanical Drawing NBB75FI

Durable 75Ω BNC bulkhead jacks with plated contacts. Versions are available with or without isolation, with or without D-shaped housings and as feed through plugs or solder terminals on the rear.

Description	Mfrs. List No.	Order Code
Recessed bulkhead jack, black D-shaped housing, feed through, isolated	NBB75DFIB.	470-9573
Recessed bulkhead jack, black D-shaped housing, feed through, grounded	NBB75DFGB.	470-9585
Bulkhead jack, feed through, isolated	NBB75FI.	470-9597
Bulkhead jack, feed through, grounded	NBB75FG.	470-9603
Bulkhead jack, front mount, solder version with isolation washers	NBB75SI	120-2040
Feed Through Jack Coupler	NBB75FA	200-8249

Impedance: 75Ω Isolation Voltage: 1500VAC rms
 Rated Current: 500V Temperature Range: -30°C to +85°C

334780

Mfrs. List No.	Order Code	1+	10+	50+	100+
NBB75DFIB.	470-9573				
NBB75DFGB.	470-9585				
NBB75FI.	470-9597				
NBB75FG.	470-9603				
NBB75SI	120-2040				
NBB75FA	200-8249				

75Ω BNC Connector - Rear Twist

NBNC75 Series



75Ω BNC Connector with black sleeving. Suitable for the following cables

- 999-2030: e.g. Belden 1522A
- 999-2065: RG6 (e.g. 592-031)
- 999-2073: RG11 (e.g. 164-3736)
- 470-9445: RG59B/U (e.g. 120-2739)
- 999-2057: RG59 mini (e.g. 139-0056)
- 999-2049: RG179B/U (e.g. 121-7820)
- 470-9457: e.g. Cordial CVI 06-28
- Coloured sleeves are available for cable colour coding

Impedance: 75Ω
 Rated Current: 500V rms / 250 V ac rms (Rear Twist Tiny)
 Cable Attachment: Sheath cable crimp
 Cable Diameter: 2.5-3.8mm (Rear Twist - Small)
 4.0-7.7mm (Rear Twist - Standard)
 10.3mm max. (Rear Twist - Large)

Temperature Range: -30°C to +85°C

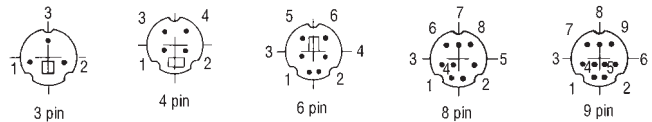
334773

Mfrs. List No.	Order Code	1+	10+	50+
Connector - Rear Twist (Standard Cable)				
NBNC75BLP7.	470-9445			
NBNC75BFG7.	470-9457			
NBNC75BTU11..	999-2065			
NBNC75BZV14	200-8255			
NBNC75BHK7	200-8256			

Mfrs. List No.	Order Code	1+	10+	50+
Connector - Rear Twist (Small Cable)				
NBTC75BFI4.	999-2030			
NBTC75BXX6.	999-2057			
Connector - Rear Twist (Large Cable)				
NBLC75BVZ17.	999-2073			
Sleeves				
BST-BNC 2-Red	470-9470			
BST-BNC 4-Yellow	470-9494			
BST-BNC 5-Green	470-9500			
BST-BNC 6-Blue	470-9512			
BST-BNC 0-Black	190-7035			
BST-BLC-CY-Turquoise	200-8248			

DIN Type - Miniature Circular

Miniature DIN Contact Pole Configuration Viewed on Plug Mating Face



224200

Miniature DIN Type - Free Plugs and PCB Sockets



Free plug L=51.6, Dia=14, Cable entry = 5 max. PCB socket H=16.5, W=14.3, D=13.5

- For use with computer peripherals, video equipment (S-VHS)
- Audio/video applications where space saving is required. Manufactured in black plastic with solder pin.
- Cable termination. Cable clamps are available separately for the free plugs.
- The PCB sockets are screened and nickel plated.

Contact rating 2A @ 12V dc, 1A @ 100V ac/100V12V2A
 Contact resistance 30mΩ Contact plating Silver, 0.3μ
 Mating cycles 1000 min

224201

	Price Each	1+	25+	50+	100+	500+
Free Plugs						
3 pin	152-207					
4 pin	152-208					
6 pin	152-209					
8 pin	152-210					
9 pin	152-391					
PCB Sockets						
3 pin	152-211					
4 pin	152-212					
6 pin	152-213					
8 pin	152-214					
9 pin	152-392					

Cable Clamps (10 per pack)	Price Per Pack	1+	5+	10+	50+
4850.0050	210-973				

MiniDIN In-line Sockets



In-line sockets for connecting to standard MiniDIN plugs. Solder connections and strain relief provided.

246830

Type	Order Code	1+	25+	100+	250+
4-pin	128-0666				
6-pin	128-0723				
8-pin	128-0724				

4 Pin Mini DIN Plug

S-Video



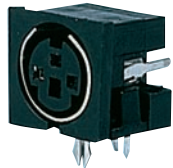
- Gold plated contacts
- High quality all metal construction
- Internal cable strain relief
- Solder bucket terminations
- Max. cable diameter 6mm



240311

	Order Code	1+	25+	50+	100+	250+
4 Pin Plug	128-0672					

MiniDIN PCB Sockets



Industry standard pin-out, right-angled PCB mounting sockets as used in many computing applications where a compact multipole connector is required.

369403.256517

Description	Order Code	1+	10+	50+	100+
4-pin	128-0736				
8-pin	128-0738				

Mini DIN Type Panel Sockets



Feature 20mm fixing centres.



369404.256518

Description	Order Code	1+	10+	50+	100+
4-Pin	128-0741				
5-Pin	128-0742				
8-Pin	128-0743				

Miniature DIN Sockets



Miniature DIN chassis sockets with mounting plates. 30mm fixing centres

246831

Type	Order Code	1+	10+	50+	100+
4-Pin	128-0718				
6-Pin	128-0671				

4-pin MiniDIN Chassis Socket



An S-Video type (4-pin MiniDIN) socket with solder bucket terminations. Supplied with fixing nut. Panel cutout: \varnothing 11mm approx.

Supplied in packs of 5.

369405.256520

Order Code	1+	10+	25+	50+
128-0744				

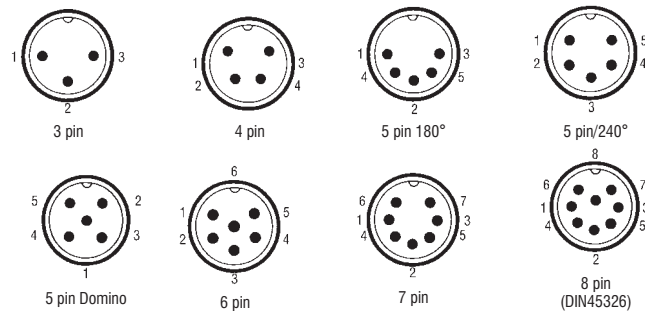


TROUBLESHOOTING TIPS

Chat online to one of our technical engineers at farnell.com

DIN Type - Circular

DIN Contact Pin Configuration Viewed on Plug Mating Face



PCB Mounted DIN Socket



NEW

- Mounting orientation: Horizontal
- Contact plating: Silver
- Current rating AC: 1A at 100V
- Current rating DC: 2A at 12V
- Colour: Black

617137

No. of Ways	Mftrs. List No.	Order Code	1+	10+	50+	100+	500+
5	PSG03463	179-1756					
6	PSG03464	179-1757					
7	PSG03465	179-1759					

DIN Circular Plug



NEW

- Shielded
- Bend protection
- Current rating: 4A
- Voltage rating: 60V AC
- Contact plating: Silver

621340

No. of Ways	Mftrs. List No.	Order Code	1+	10+	50+	100+
3	0131 03	181-4819				
4	0131 04	181-4820				
5	0131 05	181-4821				
5	0131 05-1	181-4822				
6	0131 06	181-4823				
7	0131 07-1	181-4824				
8	0131 08-1	181-4826				

Bayonet Lock

3	0132 03	181-4827				
4	0132 04	181-4828				
5	0132 05	181-4829				
5	0132 05-1	181-4830				
6	0132 06	181-4831				
7	0132 07-1	181-4832				
8	0132 08-1	181-4833				

Right Angle - Bayonet Lock

3	0134 03	181-4834				
4	0134 04	181-4835				
5	0134 05	181-4836				
5	0134 05-1	181-4838				
6	0134 06	181-4839				
7	0134 07-1	181-4840				
8	0134 08-1	181-4841				

Locking Catch

3	0137 03	181-4842				
4	0137 04	181-4843				
5	0137 05	181-4844				
5	0137 05-1	181-4845				
6	0137 06	181-4846				
7	0137 07-1	181-4847				
8	0137 08-1	181-4848				

DIN Type - Circular - continued

DIN Circular Socket



NEW

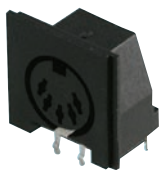


- Flange and solder terminals
- Current rating: 4A
- Voltage rating: 60V AC
- Housing material: Copper Zinc
- Contact plating: Silver

621336

No. of Ways	Mftrs. List No.	Order Code	Price Each			
			1+	10+	50+	100+
Chassis Mount - Locking Catch						
3	0103 03	181-4790				
4	0103 04	181-4791				
5	0103 05	181-4792				
5	0103 05-1	181-4793				
6	0103 06	181-4794				
7	0103 07	181-4796				
8	0103 08	181-4797				
Chassis Mount - Bayonet Lock						
3	0107 03	181-4798				
4	0107 04	181-4799				
5	0107 05	181-4800				
5	0107 05-1	181-4802				
7	0107 07-1	181-4803				
8	0107 08-1	181-4804				
Free Mount						
3	0121 03	181-4805				
4	0121 04	181-4806				
5	0121 05	181-4807				
5	0121 05-1	181-4808				
6	0121 06	181-4809				
7	0121 07-1	181-4810				
8	0121 08-1	181-4811				
Free Mount - Bayonet Lock						
3	0122 03	181-4812				
4	0122 04	181-4814				
5	0122 05	181-4815				
5	0122 05-1	181-4816				
7	0122 07-1	181-4817				
8	0122 08-1	181-4818				

90° PCB Mounting DIN Sockets



- Features:**
- Fully screened
 - Cable exit 90° from the plug axis
 - 3 to 8 way pin base
- Applications:**
- Instrumentation and audio
 - Ideal where space is critical

419077

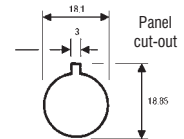
Mftrs. List No.	Order Code	Price Each			
		1+	10+	25+	100+
5 pin 180°	671-0500	917-5814			
5 pin 240°	671-0510	917-5822			
6 pin	671-0600	917-5830			
7 pin	671-0700	917-5849			
8 pin	671-0800	917-5857			

FREE GLOBAL LEGISLATION SUPPORT



RoHS, REACH, WEEE, ErP, Batteries Directive - latest updates, free white papers and live online Q&A at element14.com/legislation

DIN Type - Screw Locking



- | | | | |
|--|--|--|--|
| Free plug
L=65, Dia.=19
Cable entry=5.5 | Free Socket
L=58.6, Dia.=19
Cable entry=5.5 | Panel socket
L=20.5, Dia.=20 | |
| Current rating
Working voltage
Contact resistance
Temperature range | 4A
34V dc/24V ac
≤10mohm
-20°C to 60°C | Housing Insulator
Contacts | Polyethylene
Polyamide 66, UL94V-2
Brass, tin plated |

224205

Free Plug	Mftrs. List No.	Order Code	Price Each			
			1+	10+	50+	100+
3 pin	MAS 3100	496-820				
4 pin	MAS 4100	496-844				
5 pin 180°	MAS 5100 S 45	496-893				
5 pin 240°	MAS 5100 60	496-881				
6 pin	MAS 6100	496-911				
7 pin	MAS 7100 S	496-935				
8 pin	MAS 8100 S	496-959				
	(DIN 41524)	496-959				
Free Socket						
3 pin	MAK 3100 S	496-674				
4 pin	MAK 4100	496-698				
5 pin 180°	MAK 5100 S 45	496-741				
5 pin 240°	MAK 5100 60	496-730				
6 pin	MAK 6100	496-765				
8 pin	MAK 8100 S	496-807				
	(DIN 41524)	496-807				
Panel Socket						
3 pin	MAB 3100 S	496-418				
4 pin	MAB 4100	496-443				
5 pin 180°	MAB 5100 S 45	496-510				
5 pin 240°	MAB 5100 60	496-509				
6 pin	MAB 6100	496-558				
7 pin	MAB 7100 S	496-595				
8 pin	MAB 8100 S	496-649				

DIN Type Connectors



DIN Connectors MAS, MAK and MAWI



- DIN connectors for a variety of uses
 - Insulated handle, solder tabs
 - Manufactured to DIN 41524
 - Supplied with polyethylene bag
- | | | | |
|--------------------|-----|-------------------|---------------------|
| Rated voltage | 34V | Maximum wire size | 0.34mm ² |
| Rated current | ≤4A | Temperature range | -20°C to 60°C |
| Contact resistance | ≤4 | | |

Mftrs. List No. LB2 panel socket, LB3 switched panel socket

224206

Order Code	Price Each				
	1+	10+	50+	100+	500+
Free Plugs					
3 pin	809-743				
5 pin 180°	809-767				
5 pin 240°	809-755				
6 pin	809-779				
7 pin	809-780				
8 pin	809-792				
Free Plugs 90°					
5 pin 180°	809-809				
6 pin	809-810				
7 pin	809-822				
Free Sockets					
5 pin 180°	809-834				

DIN Type Connectors



MAB



- DIN PCB mounting sockets
- Manufactured to **DIN41524**

Rated voltage 34V Maximum wire size 0.34mm²
 Rated current ≤4A Temperature range -20°C to 60°C
 Contact resistance ≤4

224207

Mfrs.		Price Each					
Socket	List No.	Order Code	1+	10+	50+	100+	500+
6 pin	MAB 6 H	809-901					
8 pin	MAB 8 SH	809-913					

Professional Range



A range of DIN screened plugs and sockets suitable for audio and computer applications, offering robust construction with cable clamp and strain relief. Nickel plated or mattblack finish.

Contact rating 4A Housing Diecast, nickel plated or electronically
 Working voltage 100V ac/dc max conductive matt black finish
 Contact resistance ≤10mohm Insulator Nylon
 Temperature -25°C to 70°C Contacts Brass, silver plated

224209

DIN Type - Standard and Locking Plugs



Standard black
L=60.3, Dia=15.9

Standard nickel
Cable entry = 5.5 max.

Locking nickel
L=59.8, Dia=15.9
Cable entry = 5.5 max

224210

Mfrs.		Price Each				
Standard, Nickel	List No.	Order Code	1+	25+	100+	250+
3 pin	610-0300	119-3812				
4 pin	610-0400	119-3847				
5 pin 180°	610-0500	119-3813				
5 pin 240°	610-0510	119-3814				
6 pin	610-0600	119-3815				
7 pin	610-0700	119-3816				
8 pin	610-0800	119-3834				
Locking, Nickel						
3 pin	590-0300	119-3832				
4 pin	590-0400	119-3849				
5 pin 180°	590-0500	119-3833				
5 pin 240°	590-0510	119-3795				
5 pin 'Domino'	590-0520	119-3850				
6 pin	590-0600	119-3798				
7 pin	590-0700	119-3799				
8 pin	590-0800	119-3800				
Standard, Black						
3 pin	611-0300	119-3825				
4 pin	611-0400	119-3858				
5 pin 180°	611-0500	119-3826				
5 pin 240°	611-0510	119-3859				
5 pin 'Domino'	611-0520	119-3860				
6 pin	611-0600	119-3861				
7 pin	611-0700	119-3862				
8 pin	611-0800	119-3863				
Locking, Black						
3 pin	591-0300	119-3827				
5 pin 240°	591-0510	119-3865				
6 pin	591-0600	119-3866				

DIN Type - Line sockets



Suitable for mating with lockable and standard plugs within the range. Nickel plated.

Note: Latching is not guaranteed with DIN audio locking plugs of other ranges.

L = 57, Dia = 15.9,
Cable entry = 5.5 max.

224211

Mfrs.		Price Each			
List No.	Order Code	1+	25+	100+	250+
3 pin	600-0300	119-3878			
4 pin	600-0400	119-4011			
5 pin 180°	600-0500	119-3881			
5 pin 240°	600-0510	119-3882			
6 pin	600-0600	119-4012			
7 pin	600-0700	119-3883			

DIN Type - Panel and PCB Sockets

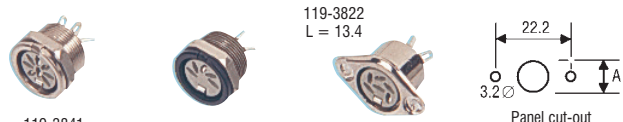


Panel and PCB sockets suitable for either locking or standard screened plugs. The PCB sockets allow direct in-line connection to a PCB.

Contact rating 4A Housings Zinc cast, nickel plated or brass with
 Working voltage 100V ac/dc max electrically conductive matt black finish
 Contact resistance ≤10mΩ Insulator Glass filled Nylon/Noryl
 Temperature range -25°C to +70°C Contacts Brass, silver plated

224212

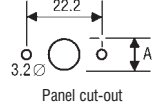
DIN Type - Circular and Flange Mounting



119-3841

119-3830

119-3822
L = 13.4



L = 19.3, Dia = 18, Panel cut-out = 16, Panel thickness = 8.5 max.

224213

Mfrs.		Price Each				
Circular, Nickel	List No.	Order Code	1+	25+	100+	250+
3 pin	650-0300	119-3836				
4 pin	650-0400	119-3852				
5 pin 180°	650-0500	119-3837				
5 pin 240°	650-0510	119-3838				
6 pin	650-0600	119-3839				
7 pin	650-0700	119-3840				
8 pin	650-0800	119-3841				
Circular, Black						
3 pin	651-0300	119-3829				
4 pin	651-0400	119-3870				
5 pin 180°	651-0500	119-3830				
5 pin 240°	651-0510	119-3871				
6 pin	651-0600	119-3873				
7 pin	651-0700	119-3874				
8 pin	651-0800	119-3875				
Flange, Nickel						
3 pin	630-0300	119-3817				
4 pin	630-0400	119-3851				
5 pin 180°	630-0500	119-3819				
5 pin 240°	630-0510	119-3821				
6 pin	630-0600	119-3822				
7 pin	630-0700	119-3823				
8 pin	630-0800	119-3835				



TROUBLESHOOTING TIPS

Chat online to one of our technical engineers at farnell.com



FREE GLOBAL LEGISLATION SUPPORT

RoHS, REACH, WEEE, ErP, Batteries Directive - latest updates, free white papers and live online Q&A at element14.com/legislation

DIN Type - Circular - continued

DIN Type - Bayonet Locking ¼ Turn

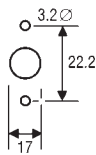
Separate Colour Coding Rings Available



Free Plug
L = 60, Dia. = 20

Locking ring
Dia. = 20

Panel socket
H = 19, W = 28.8
D = 20 (10.5 front
8 behind panel)



Panel cut-out

- Intermateable with industry standard bayonet locking ring types
- Coloured glass-filled locking rings in six colours
- Panel sockets coded with snap-in rings in same colours
- Black supplied as standard on all items

224216

Free Plugs	Mftrs.		Price Each			
	List No.	Order Code	1+	25+	100+	250+
3 pin	592-0301	119-4048				
4 pin	592-0401	119-4049				
5 pin 180°	592-0501	119-4050				
5 pin 240°	592-0511	119-4051				
6 pin	592-0600	119-4052				
8 pin	592-0800	119-4054				

Plug Colour Coded Locking Rings		Price Per Pack				
Mixed Pack (24), 4 of Each Colour		592-0000	119-4060			

Panel Sockets	Mftrs.		Price Each			
	List No.	Order Code	1+	25+	100+	250+
3 pin	593-0300	119-4061				
4 pin	593-0400	119-4062				
5 pin 180°	593-0500	119-4063				
5 pin 240°	593-0510	119-4064				
6 pin	593-0600	119-4065				
8 pin	593-0800	119-4067				

DIN Plugs - Gold Contacts



- Rubber strain relief
- Nickel plated brass shell
- Gold plated contacts

333692.278121

Description	Mftrs.		Price Each			
	List No.	Order Code	1+	10+	25+	50+
5-Pin 180°	NYS322G	463-2515				

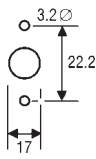
DIN Type - Twin Lock



Free plug
L = 60, Dia = 20
Cable entry = 5.5 max

Free socket
L = 57, Dia = 17.2

Panel socket
H = 19, W = 28.8
D = 20 (10.5 front,
8 behind panel)



Panel cut-out

The flanged panel sockets are for front or rear mounting.

224217

Free Plugs	Mftrs.		Price Each			
	List No.	Order Code	1+	25+	100+	250+
3 pin	71430-030/0800	119-3151				
4 pin	71430-040/0800	119-3163				
5 pin 180°	71430-050/0800	119-3154				
5 pin 240°	71430-250/0802	119-3155				
7 pin	71430-070/0800	119-3164				
8 pin	71430-080/0800	119-3165				

Free Sockets	Mftrs.		Price Each			
	List No.	Order Code	1+	25+	100+	250+
3 pin	71506-030/0800	119-3157				
4 pin	71504-040/0800	119-3166				
5 pin 180°	71506-050/0800	119-3158				

Free Plugs	Mftrs.		Price Each			
	List No.	Order Code	1+	25+	100+	250+
5 pin 240°	71506-250/0802	119-3159				
7 pin	71506-071/0800	119-3167				
8 pin	71506-080/0800	119-3169				

Panel Sockets	Mftrs.		Price Each			
	List No.	Order Code	1+	25+	100+	250+
3 pin	71206-031/0800	119-3160				
4 pin	71206-040/0800	119-3171				
5 pin 180°	71206-051/0801	119-3161				
5 pin 240°	71206-050/0800	119-3162				
7 pin	71206-070/0800	119-3172				
8 pin	71206-080/0800	119-3173				

DIN Type - Twist Lock 90° Plugs



Ideal for use in confined areas where space is at a premium.

H = 45.5, W = 20, D = 47
Cable entry = 5.5 max.

224218

Free Plugs	Mftrs.		Price Each			
	List No.	Order Code	1+	25+	100+	250+
5 pin 180°	71434-050/0800	119-3176				
5 pin 240°	71434-250/0800	119-3177				

DIN Type - Twist Lock PCB Mounting Sockets



Straight
H = 19, W = 28.8,
D = 20 (10.5 front of flange)

90°
H = 20, W = 23, D = 27

224219

Straight	Mftrs.		Price Each			
	List No.	Order Code	1+	25+	100+	250+
3 pin	71252-030/0800	119-3178				
5 pin 180°	71252-050/0800	119-3179				
8 pin	71252-080/0800	119-3180				

90°	Mftrs.		Price Each			
	List No.	Order Code	1+	25+	100+	250+
3 pin	71251-030/0800	119-3182				
4 pin	71251-040/0800	119-3183				
5 pin 180°	71251-050/0800	119-3184				
5 pin 240°	71251-250/0800	119-3185				
8 pin	71251-080/0800	119-3186				

Circular DIN Plugs

SV and WSV Series



Connection Tyoe Solder Terminals
Cable Aperture max. 6mm
Protection IP40

238939

Straight	Mftrs.		Price Each				
	List No.	Poles	Order Code	1+	10+	50+	100+
SV30	3	132-1476					
SV40	4	124-3256					
SV50	5	132-1477					
SV50/6	5	120-0134					
SV60	6	132-1478					
SV70	7	132-1479					
SV80	8	132-1482					
SV81	8*	132-1483					
SV120	12	132-1484					

Right Angle	Mftrs.		Price Each				
	List No.	Poles	Order Code	1+	10+	50+	100+
WSV30	3	132-1494					
WSV50	5	132-1497					
WSV50/6	5	132-1498					

*DIN45326

Female Circular DIN Connectors KV and WKV Series



KV50

WKV50

Connection Type Solder Terminals Cable Aperture \varnothing 6mmmax. Protection IP40 238940

Mfrs. List No.	Poles	Order Code	1+	10+	50+	100+	500+
Straight							
KV30	3	132-1485					
KV40	4	132-1486					
KV50	5	132-1487					
KV50/6	5	132-1488					
KV60	6	132-1489					
KV70	7	132-1490					
KV80	8	132-1491					
KV81	8*	132-1492					
KV120	12	124-3258					
Right Angled							
WKV50	5	132-1503					
WKV120	12	132-1506					

*DIN45326

Circular DIN Chassis Plugs SFV and SGV Series



SGV 50

238943

Mfrs. List No.	Poles	Order Code	1+	10+	50+	100+	500+
Front Mounting (lock-ring fits from rear)							
Solder Terminals							
SFV30	3	119-3056					
SFV50	5	119-3057					
SFV50/6	5	119-3058					
SFV60	6	119-3059					
SFV81	8*	119-3062					
SFV120	12	119-3063					
Rear Mounting (lock-ring fits from front)							
Solder Terminals							
SVG40	4	119-3076					
SGV81	8	119-3080					
SGV120	12	119-3081					

*DIN5326

Mfrs. List No.	Order Code	Price Each
ZMS20	824-410	

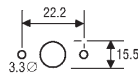
DIN Type - Latching Latching Improved RFI Screening



Free plug
L = 44, Dia = 21
Max cable diameter = 7



Panel socket



Panel cut-out
Dimension A
18.3 for rear mounting
16.4 for front mounting

These shielded connectors feature a unique locking device allowing push-pull coupling which cannot be disengaged by a direct pull on the cable. The cable is clamped by a one piece nylon cable grip. The sockets feature improved RFI screening rings.

Current rating	2A (temp. rise $\leq 5^{\circ}\text{C}$)	Housing	Glass Filled Nylon
Breakdown voltage	1.5kV	Insulator	Brass, Silver Plated
Insulation resistance	\geq	Contacts	

224220

Mfrs. List No.	Order Code	1+	25+	100+	250+
Free Plugs					
3 pin	L1904A/3/FP	117-8499			
5 pin 180°	L1904A/5/FP	117-8500			
7 pin	L1904A/7/FP	117-8502			
8 pin	L1904A/8/FP	117-8503			
Panel Sockets					
3 pin	L1904C/3/CS	309-023			
7 pin	L1904C/7/CS	309-072			

Jack Type - 2.5mm

2.5mm Jack Plugs and Sockets – Stereo



In-line stereo Jack plugs and sockets with integral strain reliefs.

2 per pack

339820.256564

Order Code	1+	10+	50+
Plug 128-0730			
Socket 128-0731			

2.5 mm Jack Plug KLS series



KLS 1 SL

KLS 10 SL

KLS 13 SL

Mfrs. List No.	No. of Ways	Design	Colour
KLS1SL	2	RCA / Phono	Black
KLS10SL	2	RCA / Phono	Black
KLS13SL	3	RCA / Phono	Black

238814

Mfrs. List No.	Order Code	1+	10+	50+	100+	500+
KLS 1	124-3259					
KLS 10	124-3260					
KLS 13	120-0139					

2.5mm Jack - 2 Pole



- Black plastic shell with a cable lamp
- Moulded cable strain relief
- Japanese specification

Note: To avoid compatibility problems it is advisable not to mix these jack plugs & sockets with other types.

152-197 L=40, Dia=8	152-199 L=39, Dia=9.5	473-467 H=9.6, W=7.2, D=16
---------------------------	-----------------------------	-------------------------------------

Panel cut-out=5.0 dia
Cable entry = 4.0 max

224128

Order Multiple=5	Order Code	5+	50+	250+	500+	1K+
Free plug	152-197					
Line socket	152-199					
Panel socket	473-467					

2.5mm Jack Type - 2 Pole, High Quality



143-317 L=31.5, Dia=8.9	143-318 L=31.5, Dia=6.4	143-337 H=15.7, W=10.7, D=11.4
----------------------------	----------------------------	-----------------------------------

Cable entry=3.3 max
Panel cut-out=5.3 Dia

Note: To avoid compatibility problems it is advisable not to mix these jack plugs & sockets with other types.

224129

Order Code	1+	100+	250+	500+	1K+
Insulated plug	143-317				
Screened plug	143-318				
Switched socket	143-337				

Jack Type - 2.5mm - continued

238820

2.5mm Professional Jack

Switchcraft

Plugs and Sockets



A range of miniature, 2-pole Jack plugs and sockets.

Plugs: In-line plugs available in either a standard, push-in type or a thread locking type that mates with the TR2A (119-2900) chassis socket.

Sockets: Available in enclosed solder and PCB mount versions or open versions. The TR2A open type can be wired for open or closed circuit operation.

Panel Thickness 850 / 851	1.6mm max. 2.3mm max.	TR2A	∅4.8mm
Panel Mounting Hole 850 / 851	∅5.16mm	Depth Behind Panel MDSL2A TR2A	14mm 5.8mm

339826.256579

Description	Mfrs. List No.	Order Code	Price Each	
			1+	10+
Plugs				
Standard	850	119-2897		
Locking	851	119-2898		

Description	Mfrs. List No.	Order Code	Price Each	
			1+	10+
Sockets				
Enclosed - Panel Type	MDSL2A	509-6248		
Open Frame Panel Type	TR2A	119-2900		

90° 2.5mm Jack Plugs



90° 2.5mm jack plugs available in mono or stereo configurations, ideal for audio connections.

415503.345051

Description	Order Code	Price Per Pack			
		1+	25+	100+	250+
Mono	126-7369				
Stereo	126-7370				

4-pole 2.5mm Jack Plug



With strain reliefs. Commonly used for video plus stereo audio connections.

339821.256569

Order Code	1+	Price Each	
		10+	50+
128-0729			

2.5mm In-Line 4 Pole Jack Socket



An in-line 4-pole jack socket with integral strain relief and solder terminals. Ideal for use with audio visual equipment. **2 per pack**

339822.276325

Order Code	1+	Price per Pack	
		10+	50+
126-7380			

2.5 mm Sockets

KLB series



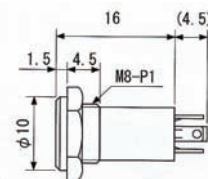
Mfrs. List No.	No. of Ways	Design
KLB1L	2	RCA / Phono
KLBR1L	2	RCA / Phono
KLB13L	3	RCA / Phono

KLB 1 L KLBR 1 L KLB 13 L



Mfrs. List No.	Order Code	Price Each
KLB1L	121-7014	1+
KLBR1L	120-0140	
KLB13L	120-0141	

2.5mm Panel Mount Jack Sockets



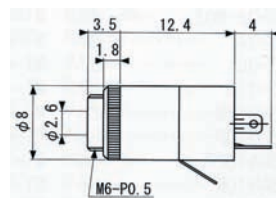
A range of 2.5mm panel mount jack sockets supplied with lock nuts.

2 Per Pack

382819.345105

Description	Order Code	Price Per Pack			
		1+	25+	50+	100+
2-pole	126-7391				
3-pole	126-7392				
4-pole	126-7393				

2.5mm 4-Pole Panel Mount Jack Socket



A 4-pole 2.5mm panel mount socket with solder terminals.

339823.276555

Order Code	1+	Price Each	
		10+	50+
126-7379			

2.5 mm Jack Chassis Sockets

15 01 series



- 2.5 mm jack chassis sockets
- SMD and through-hole designs
- Metal or plastic crown
- Versions with break contacts

Mfrs. List No.	Design			Order Code
150102	3 Poles (stereo) Metal crown	RCA / Phono	90° angle version	121-6976
150103	3 Poles (stereo) Plastic crown, screening with PCB connection	RCA / Phono	90° angle version	120-0127
150104	3 Poles (stereo) Metal crown	RCA / Phono	90° angle version	121-6977
150105	3 Poles (stereo) Plastic crown, water-tight	RCA / Phono	90° angle version	121-6978

238822

Order Code	1+	Price Each	
		10+	50+
121-6976			
120-0127			
121-6977			
121-6978			

Jack Type - 3.5mm

3.5mm Plug and Jacks



- A range of 3.5mm jacks and plugs available in stereo and mono
- Panel, cable and PCB through hole mounting varieties
- Contact material: Copper alloy
- Contact plating: Nickel

NEW

Current rating	1A	Insulation Resistance	100MΩ
Voltage rating	34V	Contact Resistance	≤50mΩ

657143

No. of Ways	Mftrs. List No.	Order Code	1+	10+	100+	250+
Plugs - Cable Mount - Copper Zinc Housing						
2	1532 04	210-1775	●			
3	1532 01	210-1772	●			
Plugs - Cable Mount - Plastic Housing						
2	1532 06	169-6413	●			
4	1532 02	210-1773	●			
Plugs - Cable Mount - Threaded Joint						
3	1532 05	210-1776	●			
Jacks - Cable Mount						
3	1522 01	210-1777	●			
Jacks - PCB Mount						
2	1502 03	127-0966	●			
3	1502 01	124-3242	●			
Jacks - Panel Mount with Solder Eyes						
3	1502 04	210-1778	●			
4	1502 02	136-8639	●			

3.5mm Mono Plug



High quality soft black plastic cover, integral cable protector.

451212.256581

Pack Size=10	Colour	Order Code	1+	10+
	Black	129-4214	●	

3.5mm Stereo Plug



High quality soft black plastic cover, integral cable protector.



415496.256583

Colour	Order Code	1+	10+	50+	100+	250+
Black	128-0662	●				

3.5mm In-line Jack Sockets

In-line jack sockets with integral strain relief and solder terminals. Ideal for use with audio visual equipment.



415497.333759

Description	Order Code	1+	10+	50+	100+
Mono	128-0664	●			
Stereo	128-0665	●			
4-Pole	126-7368	●			

3.5mm Jack Type - 2 Pole



152-202
L=39, Dia=9.5
Cable entry=4.0 max

152-201
H=16.3, W=8, D=9.5

152-206
H=16, W=11, D=10
Panel cut-out=6.0 dia



- Black plastic shell with a cable clamp
- Moulded cable strain relief
- Japanese specification

Note: To avoid compatibility problems it is advisable not to mix these jack plugs & sockets with other types.

224130

Order Multiple=5	Description	Order Code	5+	100+	250+	500+	1K+
	Line Socket	152-202	●				
	Panel socket	152-201	●				
	PCB Socket	152-206	●				

3 Pole (Stereo), Low Cost Plugs and Sockets



3.5mm Jack Type - 3 Pole (Stereo)



- Black plastic shell with a cable clamp
- Moulded cable strain relief
- Japanese specification

Note: To avoid compatibility problems it is advisable not to mix these jack plugs & sockets with other types.

152-203 L=52, Dia=10, Cable entry=4.0 max

152-205 L=39, Dia=9.5, W=12, D=16

152-204 H=6, W=12, D=16

224133

2Order Multiple=	Order Code	2+	50+	100+	250+	500+
	Free plug	152-203	●			
	Line socket	152-205	●			
	PCB socket	152-204	●			

3.5mm Jack Type - 2 Pole/high quality



Note: To avoid compatibility problems, it is advisable not to mix these jack plugs & sockets with other types.

143-313 L=34, Dia=8.9, Panel cut-out=6.4 Dia, Cable entry=3.3 max.

143-314 L=34, Dia=6.4, W=10.7, D=15.5

143-334 H=14.1, W=10.7, D=15.5

224131

Order Code	1+	100+	250+	500+	1K+
Insulated plug	143-313	●			
Screened plug	143-314	●			
Switched socket	143-334	●			

3.5mm Jack Type - Screw Locking



Note: To avoid compatibility problems, it is advisable not to mix these jack plugs & sockets with other types.

Plug: 143-312 L=34, Dia=9.7, Cable entry=3.3 max.

Socket: 143-335 H=14.2, W=10.9, D=15.5, Panel cut-out=8.2 Dia

PCB Socket: 149-932 H=9.4, W=10.7, D=15.4

PCB drilling pattern W=9.0, D=3.4, PCB hole size=1.2

224132

Order Code	1+	100+	250+	500+	1K+
Plug	143-312	●			
Socket	143-335	●			
PCB socket	149-932	●			

3.5mm Jack Type - 3 Pole (Stereo)



143-315 L=39.6, Dia=10.4, Cable entry=4.8 max.

143-316 L=39.1, Dia=7.9, W=10.7, D=18.8, Panel cut-out=6.4 dia.

143-336 H=14.2, W=10.7, D=18.8

149-933 H=9.3, W=10.7, D=18.8, PCB drilling pattern W=9.0, D=3.3+3.3, PCB hole size=1.2

Note: To avoid compatibility problems, it is advisable not to mix these jack plugs & sockets with other types.

224134

Plugs	Order Code	1+	100+	250+	500+	1K+
Insulated	143-315	●				
Screened	143-316	●				
Sockets						
Switched	143-336	●				
PCB switched	149-933	●				

3.5mm Jack Plugs - Gold Plated



Mono & Stereo



- Gold plated contacts
- Gold plated all metal bodies

240317

Order Code	1+	25+	50+	100+	250+
Stereo Plug	414-9520	●			

Jack Type - 3.5mm - continued

Jack Connectors, 3.5mm

KLS Series



KLS 20 SL KLS 22 L WKLS 2 L
KLS 40 SL KLS 44 L WKLS 40 L

Mfrs. List No.	Poles	Housing	Format	Colour
KLS2SL	2	Plastic	RCA / Phono (ball headed)	Black
KLS22L	2	Metal	RCA / Phono	Silver / Black
WKLS2L	2	Plastic	RCA / Phono	Black
KLS40SL	3	Plastic	RCA / Phono	Black
KLS44L	3	Metal	RCA / Phono	Silver / Black
WKLS40L	3	Plastic	RCA / Phono	Black

Cable Diameter: max. 4mm

240721

Mfrs. List No.	Order Code	1+	10+	50+	100+	500+
KLS2SL	124-3261					
KLS22L	124-3264					
WKLS2L	124-3265					
KLS40SL	124-3266					
KLS44L	124-3267					
WKLS40L	124-3268					

Inline Jack Sockets, 3.5mm

KLK Series



Mfrs. List No.	Poles	Housing	Colour
KLK2SL	2	Jack Socket	Black
KLK22L	2	Jack Socket	Black / Silver
KLK4SL	3	Jack Socket	Black
KLK44L	3	Jack Socket	Black / Silver

Cable Diameter: max. 4mm

238827

Mfrs. List No.	Order Code	1+	10+	50+	100+	500+
KLK2SL	121-7006					
KLK22L	121-7007					
KLK4SL	121-7009					
KLK44L	121-7011					

3.5mm Jack Plugs



A range of high quality 3.5mm jack plugs featuring crimp strain reliefs and available with nickel or gold plated contacts. Maximum cable diameter 4.8mm.

333693.278131

Description	Mfrs. List No.	Order Code	1+	10+
-------------	----------------	------------	----	-----

Nickel Plated

Mono	NYS226	823-4655		
Stereo	NYS231	448-0181		

Gold Plated

Stereo	NYS231BG	823-4663		
--------	----------	----------	--	--

3.5mm Jack Plugs – Metal



All metal Jack plugs with chrome plated metal bodies and nickel plated contacts. The plugs also feature spring cable strain reliefs and accept cables up to \varnothing 5mm.

369586.256586

Description	Order Code	1+	10+	25+	100+
Mono	128-0921				
Stereo	128-0923				

90° 3.5mm Jack Plugs



With solder terminations and integral strain relief, available in mono, stereo or 4-pole versions.

Supplied in packs of 5

369513.276543

Description	Order Code	Price Per Pack			
		1+	10+	25+	100+
Mono	126-7388				
Stereo	126-7389				
4-Pole	126-7390				

3.5mm Right-Angle Stereo Plug



- The only available 3.5mm plug with chuck type strain relief
- All metal housing - reliable and robust
- Easy to assemble, simple to use
- Slim design - space saving
- Excellent cable protection
- All nickel or black housing available with gold plated contacts

Wiring Wire size <0.22mm² / 24AWG Cable O.D. range 2 - 4.5mm

372763.345291

Contacts	Mfrs. List No.	Order Code	1+	10+
Metal	NTP3RC	500-8402		
Gold	NTP3RC-B	500-8414		

3.5mm Jack Plug – 4 Pole



339827.256593

Order Code	1+	10+	50+
128-0728			

3.5mm 4-Pole Jack Plug



- Metal Housing
- Solder connections
- 4-pole
- Spring strain relief

369574.345022

Order Code	1+	25+	50+	100+
128-0789				

3.5mm Jack Sockets



Chassis Mounting



- All metal construction
- Supplied with mounting nut & strain relief
- Solder connections

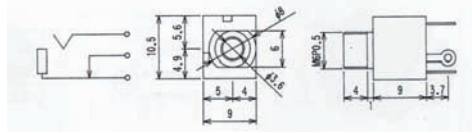
240331

Order Code	1+	25+	50+	100+	250+
Stereo Socket	128-0674				

TROUBLESHOOTING TIPS

Chat online to one of our technical engineers at farnell.com

Panel Mount 3.5mm Jack Sockets



Panel mount 3.5mm jack sockets available in mono or stereo configurations with solder terminals and lock nuts

Supplied in packs of 5

369503.276572

Description	Order Code	Price Per Pack			
		1+	10+	25+	100+
Mono	126-7382				
Stereo	126-7384				

3.5mm Jack Socket – Chassis Mount



Jack socket with fixing nuts and solder terminals.

Supplied in packs of 5

369436.256604

Description	Order Code	Price Per Pack			
		1+	10+	25+	50+
Stereo	128-0747				

3.5mm Jack Socket – Chassis Mount/Switched



3.5mm jack stereo socket with plastic body and solder terminals.

369506.256603

Description	Order Code	Price Each			
		1+	10+	25+	100+
Switched	126-7385				

3.5mm, Mono Jack Socket



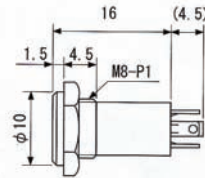
Mono jack sockets for front panel mounting with switching action on insertion of a 3.5mm jack plug. Solder tag connections.

Body Size 8.3x10.8x8.7mm
Panel Hole 8mm dia.

369522.256608

Order Code	Price Each			
	1+	10+	25+	100+
804-4961				

3.5mm Panel Mount Jack Sockets



3.5mm panel mount jack sockets supplied with lock nuts - grey
2 Per Pack

382820.345106

Description	Order Code	Price Per Pack			
		1+	25+	50+	100+
2-pole	126-7394				
3-pole	126-7396				
4-pole	126-7397				

3.5mm Chassis Socket – Stereo



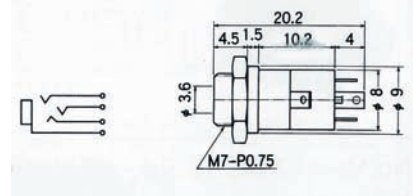
Chassis mounting, metal/plastic finish (enclosed), solder terminals.

339828.256599

Order Code	Price Each		
	1+	10+	50+
126-7374			



3.5mm 4-Pole Panel Mount Jack Socket



A 4-pole 3.5mm panel mount socket with solder terminals.

339829.276569

Order Code	Price Each		
	1+	10+	50+
126-7373			

Chassis Jack Sockets 3.5mm, 3-pole KLB Series



Mfrs. List No. Poles Format
KLB4L 3 RCA / Phono
KLB R4L 3 RCA / Phono

KLB 4L

KLB R 4L

238829

List No.	Order Code	Price Each				
		1+	10+	50+	100+	500+
KLB4L	120-0144					
KLB R4L	121-7016					

Chassis Jack Sockets 3.5mm, 2-pole KLB Series



1502 03

KLB 2 L

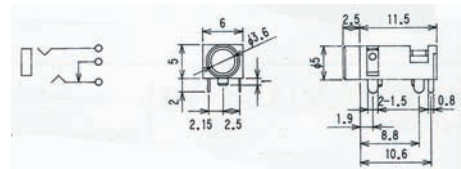
1503 12

Mfrs. List No. Poles Housing
1502 03 Straight
1503 12 RCA / Phono

238828

List No.	Order Code	Price Each				
		1+	10+	50+	100+	500+
KLB2L	121-7015					
1502 03	127-0966					
1503 12	134-0604					

PCB Mount 3.5mm Jack Sockets



PCB mount 3.5mm jack sockets available in mono stereo+4 Pole configurations.
5 per pack

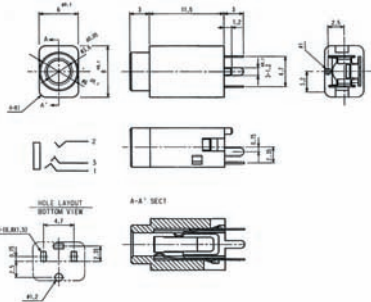
339825.277758

Order Code	Price Per Pack		
	1+	10+	50+
Mono	126-7375		
Stereo	126-7376		
4-Pole	126-7377		

Jack Type - 3.5mm - continued

Jack Chassis Socket, 3.5mm

1502 01

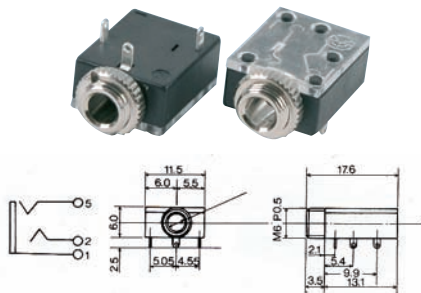


Poles: 3
 Rated Voltage: 34V AC/DC
 Rated Current: 1A
 Contact Resistance: 50mΩ max.
 Isolation Resistance: MΩ

334401

Mfrs. List No.	Order Code	1+	10+	50+	100+
1502 01	124-3242				

3.5mm Stereo Jack Socket

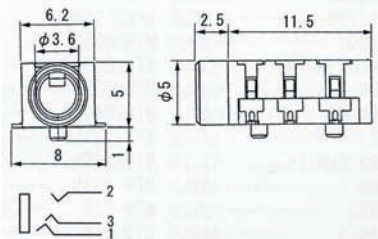
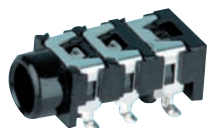


Panel mount 3.5mm jack sockets suitable for mono or stereo operation. Solder tag terminals.

2 Per Pack
 382824.345113

Order Code	1+	25+	50+	100+
126-7400				

PCB Mount 3.5mm Stereo Jack Socket - SMD



A PCB mount stereo 3.5mm jack socket with a surface mount design for compact PCBs.

5 per pack.

339824.276587

Order Code	1+	10+	50+
163-8670			

Chassis Mounted Stereo Jack Sockets, 3.5mm

15 03 Series



Mfrs. List No.	Poles	Format	Order Code
150302	3 (Stereo)	Surface Mount Device	121-6979
150303	3 (Stereo)	Surface Mount Device, Plastic	121-6980
1503 06	2 (Stereo)	Plastic	124-3243
1503 09	3 (Stereo)	Plastic	124-3244

238830

Order Code	1+	10+	50+	100+
121-6979				
121-6980				
124-3243				
124-3244				

Jack Type - 6.35mm (1/4")

6.35mm (1/4") Timbre Jack Plug



NEW



The natural electrical property of guitar cables cause the characteristic cable tone. Neutrik's new timbrePLUG provides the possibility to change the timbre of your guitar sound from neutral, clear sound to warm characteristics in 4 steps by turning a knob on the plug.

- Precision machined one piece contacts
- Solder contacts
- Rated voltage: 50 V
- Wire range: 18AWG
- Durability: >1000 cycles

644204

Mfrs. List No.	Order Code	1+	10+	50+	100+
Plug	NP2RX-TIMBRE				

6.35mm Two Pole Phone Plug



NEW



- Number of contacts: 2
- Robust diecast shell
- Proven chuck type strain relief for reliable cable retention
- Precision machined one-piece contacts
- Voltage rating: 50V
- Wire size: 18 AWG
- Contact material: Brass
- Contact plating: Nickel

644663

Mfrs. List No.	Order Code	1+	10+	50+
Plug	NP2XL			

6.35mm Jack Plugs - 2/3 Pole



Mono & Stereo



- Quality soft black plastic cover incorporating strain relief
- Internal cable protector
- Solder connections

240334

Order Code	1+	25+	50+	100+	250+
Mono Plug	128-0675				
Stereo Plug	128-0676				

6.35mm Jack Plugs - Metal Construction



Mono & Stereo



- Nickel plated
- All metal construction
- Integrated strain relief

240351

Order Code	1+	25+	50+	100+	250+
Mono Plug	128-0677				
Stereo Plug	128-0678				

6.35 mm Jack

KLS and KLSM series



Mfrs. List No.	No. of Ways	Design	Colour
KLSM3SL	2	RCA / Phono	Black
KLSM33L	2	RCA / Phono	Nickel
KLS3SL	3	RCA / Phono	Black
KLS 33.	3	RCA / Phono	Nickel

238833

Mfrs. List No.	Order Code	1+	10+	50+	100+	500+
KL3M3SL	124-3269					
KL3M33L	124-3270					
KL3S3SL	124-3271					
KL3S33L	838-329					
KL3 33.	120-0126					

6.35 mm Free Stereo Sockets KLK series



KLK 3

238834

Mfrs. List No.	Order Code	1+	10+	50+	100+	500+
KLK3SL	121-7013					

6.35 mm Sockets, blank KLB series

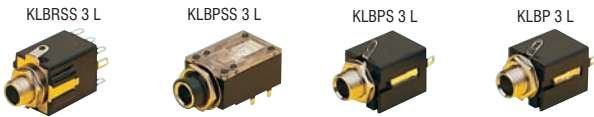


Mfrs. List No.	No. of Ways	Design
KLBM3L Mono	2	RCA / Phono
KL3L Stereo	3	RCA / Phono

Thread: M9 x 0.75

Mfrs. List No.	Order Code	1+	10+	50+	100+	500+
KLBM3L	121-7005					
KL3L	121-7017					

6.35 mm Sockets, closed KLB series



Mfrs. List No.	No. of Ways	Design
KLBP3L	2	RCA / Phono
KLBP33L	3	RCA / Phono
KLBPSS3L	3	RCA / Phono

Thread: M9 x 0.75
M12 x 1 (KLBSS 3L)

238836

Mfrs. List No.	Order Code	1+	10+	50+	100+	500+
KLBP3L	121-7018					
KLBP33L	121-7019					
KLBPSS3L	121-7020					

6.35mm (1/4") Jack Type - 2 Pole (Mono) 2 Pole Plugs and Sockets - Standard (Switched and Unswitched)



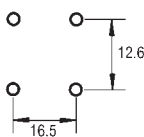
148-257
Body size: L=41.3,
Dia=11.2



148-258
Body size: L=38.1,
Dia=12.7
Cable entry=6.0 max



148-266 (Panel)
H=23.8, W=20.4, D=21.3 Panel cut-out=11.0 dia
(plastic nut) 11.5 dia (chrome nut), Pins=solder lug type



PCB Drilling Pattern
PCB hole size=1.6

High quality two pole jack plugs and sockets featuring long life contacts.

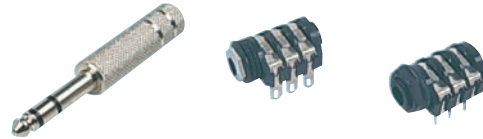
Housing	Plugs screened Plugs insulated Sockets	Straight: Chrome plated brass, 90° Chrome plated plastic Tough polypropylene Shatterproof black nylon Silver plated brass, nickel silver springs
---------	--	---

Mfrs. List No.	P2 = 148-258 S2SNS = 148-264	S4SNS = 148-266 S4BNB = 148-267	S2BNBPCA = 152-062
----------------	---------------------------------	------------------------------------	--------------------

224135

	Order Code	1+	25+	50+	100+	250+
Plugs, Straight						
Insulated	148-258					
Panel Sockets, Plastic Nut						
Unswitched	148-264					
Panel Sockets, Chrome Nut						
Unswitched	148-266					
Switched	148-267					
PCB Sockets, Plastic Nut						
Switched	152-062					

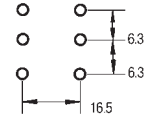
6.35mm (1/4") Jack Type - 3 Pole (Stereo) 3 Pole Plugs and Sockets - Standard (Switched)



148-261
Body: L=41.3, Dia.=11.2

148-269 (Panel)
H=23.8, W=20.4, D=24.9,
Panel cut-out=11 dia (plastic nut), 11.5 dia
(chrome nut)

152-063 (PCB)



PCB Drilling Pattern
PCB Hole Size=1.6

Professional high quality three pole jack plugs and sockets featuring long life contacts.

Housings	Plugs Screened Plugs insulated Sockets	Straight: Chrome plated brass, Tough polypropylene Shatterproof black nylon Silver, nickel silver springs	90°: Chrome plated plastic
----------	--	--	----------------------------

Mfrs. List Nos:	P3 = 148-261 S2BBB = 148-268	S4BBB = 148-269	S2BBBPCA = 152-063
-----------------	---------------------------------	-----------------	--------------------

224143

	Order Code	1+	25+	50+	100+	250+
Plugs Straight						
Screened	148-261					
Switched Panel Socket						
Plastic nut	148-268					
Chrome nut	148-269					
Switched PCB Socket						
Plastic nut	152-063					

6.35m (1/4") Jack Type - 2 Pole (Mono)



119-3205 L=75.7, Dia=14.5
143-320 L=67.28, Dia=15.3
143-328 H=35.5, W=15.9, D=20.2
Cable entry: Screened=6.4 max, Insulated=5.8 max.

Mfrs. List No:	4803.1210 = 119-3205R22690000 4803.12 = 143-320R22609000	4803.1220 = 143-328R23690000
----------------	---	------------------------------

224136

	Order Code	1+	25+	50+	100+	250+
Straight Plugs						
Insulated	119-3205					
Screened (metal)	143-320					
Elbow Plugs						
Insulated	143-328					

6.35mm (1/4") Jack Plugs - 3 Pole (Stereo)



143-323
Body size: L=36.8,
Dia=15.24

143-330
Body size: H=35.5
W=15.9, D=20.2

Jack Type - 6.35mm (1/4") - continued

6.35mm (1/4") Jack Plugs - 3 Pole (Stereo) - continued

Cable entry: Screened=6.4 max, Unscreened=5.8 max.

Mfrs. List No: 4803.1300 = 143-323 4803.1401 = 143-330



224147

Gauge A	Order Code	Price Each				
		1+	25+	50+	100+	250+
Screened	143-323					
90° Insulated	143-330					

6.35mm Jack

Amphenol



NEW

- PCB mounted, through hole
- Right angle
- Current rating: 10A
- Housing material: UL94 PBT
- Contact plating: Tin
- Colour: Black

618732

No. of Contacts	Mfrs. List No.	Order Code	Price Each			
			1+	10+	50+	100+
Single						
2	ACJM-MHDR	183-5536				
3	ACJS-MHDR	183-5537				
Dual						
2	ACJM-MHD	183-5538				
3	ACJS-MHD	183-5539				

6.35mm Jack Connectors

Amphenol

ACPM "Musician" Series



- Mono or stereo
- Stylish shell design
- Robust diecast shell in satin nickel or black finish
- Flexible grommet cable protection
- Improved solderability
- Precision machined contacts

Electrical Specifications

Contact Resistance	≤mΩ
Insulation Resistance	>2000MΩ
Dielectric Strength	1500V dc
Rated Current	10A
Capacitance between contacts	3-pole: 5-pole:
Withstand Voltage	2-Pole: 1.5kV 3-Pole: 1.5kV

Mechanical Specifications

Lifetime	>
Insertion / Withdrawal Force	≤
Cable Outside Diameter Range	-
Maximum Wire Size	2-pole: 16AWG 3-pole: 16AWG

Operating Temperature

Flammability	-25 to 75°C
Protection	UL94V-0 IP40

473923.473814

Poles	Colour	Order Code	Price Each			
			1+	25+	50+	100+
Straight Plugs						
2	Nickel	134-9045				
2	Black	134-9046				
3	Nickel	134-9049				
3	Black	134-9050				
Right Angled Plugs						
2	Nickel	134-9047				
2	Black	134-9048				
3	Nickel	134-9051				
3	Black	134-9052				

6.35mm (1/4") Jack Plugs

NEUTRIK



General purpose 6.35mm (1/4") jack plugs featuring crimp strain reliefs and available with nickel plated contacts. Maximum cable diameter 6mm.

2 Per Pack

333694.278139

Description	Mfrs. List No.	Order Code	Price Per Pack	
			1+	10+
Mono	NYS201	463-2606		
Stereo	NYS202	463-2618		

6.35mm Jack Plug

NEUTRIK



- 6.35mm jack plug
- Low cost
- Available in mono or stereo versions

2 Per Pack

364371.345293

Description	Mfrs. List No.	Order Code	Price Per Pack	
			1+	10+
Mono	NYS203	802-0450		
Stereo	NYS204	802-0469		

90° 6.35mm (1/4") Jack Plugs

NEUTRIK



General purpose 90° 6.35mm (1/4") jack plugs featuring crimp strain reliefs and available with nickel plated contacts. Maximum cable diameter 6mm.

5 Per Pack

333685.278326

Description	Mfrs. List No.	Order Code	Price Per Pack	
			1+	10+
Mono	NYS207	463-2620		
Stereo	NYS208	463-2631		

6.35mm (1/4") Jack Plugs and Panel Sockets

Switchcraft



- Nickel plated brass finish
- Very strong plug retention
- Ideal replacements for guitars or products where lead pull off can cause problems

Panel Socket Standard L=32, Dia=23	Long reach L=60 Dia=16 Thread Length=34
---------------------------------------	---

224140

Plugs	Mfrs. List No.	Order Code	Price Each				
			1+	5+	10+	50+	100+
Panel Sockets							
Standard							
2 pole	12A	119-2904					
3 pole	14B	971-236					
Long Reach							
2 pole	151	971-248					

6.35mm (1/4") Jack Plugs - Right Angled

Switchcraft



- Quick and easy to assemble
- Low profile, 1/2" wide
- Cable clamp
- Solder termination of up to 16 AWG wire
- Rugged manufacture

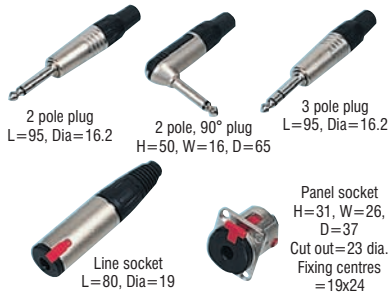
Body: L=43, W=16 (max.), 2 & 3 Pole 90° Plug, Cable entry=6.7 max.

Dielectric withstanding voltage	500Vac
Insulation resistance	50,000M Ω min. (initial)
Operating temperature	-20°C to +65°C
Housing	Brass tin plated
Contacts	Housing/Sleeve = Die Cast Zinc, Copper & Nickel plated

No. of Poles	Mfrs. List No.	Order Code	1+	10+	50+	100+	250+
2	226	665-770					
3	236	665-769					

6.35mm (1/4") Jack Plugs and Locking Sockets

N-Series



Diecast, professional jack connectors of exceptional quality. The plugs are quick and easy to assemble, and incorporate a cable clamp and strain relief sleeve. The sockets feature a push release mechanism, and will lock with any 2 or 3 'gauge A' plug. By connecting the ring and sleeve together, the sockets may be configured for 2 pole plugs. Nickel plated or black chrome finish.

Housings	Diecast zinc, copper and nickel plated		
Insulator	Plugs	Nylon (PA66)	
	Sockets	Polyester (PBTP) UL94V-0	
Contacts	Plugs	Brass, nickel plated	
	Sockets	Beryllium bronze, silver plated	
Mfrs. List No:	NP2C = 212-155	NJ3FP6C = 212-180	NJ3FC6CBAG = 212-210
	NP3C = 212-167	NP2CBAG = 212-192	NJ3FP6CBAG = 212-222
	NJ3FC6C = 212-179	NP3CBAG = 212-209	

	Order Code	1+	10+	50+	100+
Nickel					
Plug, 2 pole	212-155				
Plug, 3 pole	212-167				
Line socket	212-179				
Panel socket	212-180				
Black					
Plug, 2 pole	212-192				
Plug, 3 pole	212-209				
Line socket	212-210				
Panel socket	212-222				

6.35mm (1/4") Jack Plugs X Series



- Slim, sleek, streamlined design
- Only 15.88mm overall diameter
- Traditional, Neutrik quality
- One piece engineered tip, no rivets
- Neutrik chuck principal strain relief
- New design rear cable gland
- Gold plated insert (-B)

Housing	ZnAl4Cu1(Zinc), black over nickel	Cable Entry	4-7mm
Insulation	PA6.6 30% GR	Operating Temperature	-20°C to +65°C
Contacts	Nickel/Gold		

	Mfrs. List No.	Order Code	1+	10+	50+	100+
Mono						
Nickel	Nickel NP2X	831-4535				
Black	Nickel NP2X-BAG	831-4551				
Black	Gold NP2X-B	831-4543				
Stereo						
Nickel	Nickel NP3X	831-4560				
Black	Nickel NP3X-BAG	831-4586				
Black	Gold NP3X-B	831-4578				

3 Pole Line Socket Standard

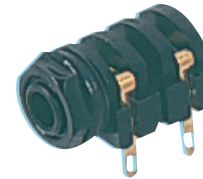
High Quality, Screened



L=53.3, Dia=14.5,
Cable entry=6.4 max

Mfrs. List No.	Order Code	1+	25+	50+	100+	250+
4803.3300	143-333					

6.35mm (1/4") Jack Sockets - 2 Pole

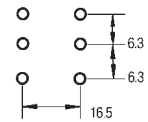


143-338
H=25.5, W=18.8, D=31.2
Panel cut-off=11.2 Dia

Plastic Nut	4803.2210 = 143-338R32620000
-------------	------------------------------

Panel (Switched)	Order Code	1+	25+	50+	100+	250+
Plastic nut	143-338					

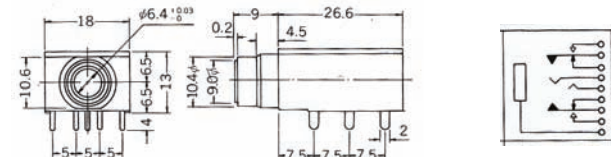
3 Pole Sockets, Standard (Switched)



143-340 (Panel)	149-934 (PCB/Panel)
Gauge A: H=25.5, W=18.8, D=31.2 Panel cut-out = 11.2 Dia.	
Mfrs. List No:	4803.2310 = 143-340 4803.2300 = 143-341 4803.2330 = 149-934

Panel	Order Code	1+	25+	50+	100+	250+
Gauge A						
Plastic nut	143-340					
Chrome nut	143-341					
PCB/Panel						
Gauge A						
Plastic nut	149-934					

6.35mm Stereo PCB Mount Socket



6.35mm (1/4") PCB mount stereo jack sockets. Dual switched design.

Order Code	1+	25+	50+	100+
126-7402				

Jack Type - 6.35mm (1/4") - continued

M Series 6.3mm Jack Sockets Switched & Unswitched



- Heavy duty jack sockets
- Choice of nose styles
- Switched or non-switched
- Supplied with mounting nut & washer

Mechanical Life	>1000 Insertion cycles	Insulation resistance	>100MΩ
Insertion force	Mono: 1.3 Kg Stereo: 1.4 Kg	Contact rating	3A
Panel Hole Dia.	11.2	Switch rating	0.5A @ 50V dc
Contact resistance	<0.025Ω	Contacts	Pure nickel silver

2 Pole - Mono		Terminals	Mfrs. List No.	Order Code
Switched/unswitched	unswitched	Full nose Solder tags	NMJ2HF-S	416-9165
Switched	Switched	Full nose Solder tags	NMJ4HF-S	416-9177
Switched	Switched	Chrome nose Solder tags	NMJ4HC-S	416-9219
Switched	Switched	Full nose PCB Pins	NMJ4HFD2	416-9244
3 Pole - Stereo				
unswitched	unswitched	Full nose Solder tags	NMJ3HF-S	416-9189
Switched	Switched	Chrome nose Solder tags	NMJ6HF-S	416-9190
Switched	Switched	Full nose Solder tags	NMJ6HC-S	416-9232

241431.343592

Order Code	1+	10+	Price Each		
			50+	100+	500+
2 Pole - Mono					
Unswitched 416-9165					
Switched 416-9177					
Switched 416-9219					
Switched 416-9244					
3 Pole - Stereo					
Unswitched 416-9189					
Switched 416-9190					
Switched 416-9232					

90° 6.35mm (1/4") Jack Sockets



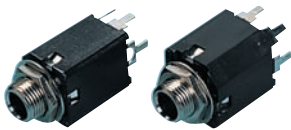
High quality 6.35mm (1/4") jack sockets featuring solder and nickel plated contacts. Maximum panel thickness 5.5mm.

2 Per Pack

333687.278338

Description	Mfrs. List No.	Order Code	Price Per Pack	
			1+	10+
Mono	NYS229	463-2655		
Stereo	NYS230	463-2667		

2 and 3 Pole PCB/Chassis Mount



- PCB/Chassis mountable
- Single or double closed circuit
- Mounts on 15.9" min. centres
- Housing Unitized moulded mounting bushing, brass and nickel plated

Jack Socket H=23.8, W=15.7, D=15.7
Max. Panel Cut-Out=6.4 dia

224141

No. of Poles	Mfrs. List No.	Order Code	Price Each			
			1+	10+	50+	100+
2	112APCX	119-2839				
3	114BPCX	119-2841				

6.35mm (1/4") Jack Sockets - Screw Type



Body Length: 30mm. Mounting hole diameter: 12mm approx.

389438.256645

Description	Order Code	Price Each			
		1+	10+	50+	100+
Mono	128-0750				
Stereo	128-0751				

6.3mm Jack Plugs & Sockets



601733

Pin Dia.	Order Code	Price Each				
		1+	10+	50+	100+	500+
Stereo Socket, Open Circuit, 3 Conductors						
6.3mm	171-5984					
Mono Socket, , Open Circuit, 3 Conductors						
6.3mm	171-5985					
Stereo Plug, Cable Entry = 7.5mm						
6.3mm	171-5988					

Jack Type - Other

3 Pole Plugs, B-Gauge (B.P.O. 316) NEUTRIK



L=85, Dia=13
Cable entry=4-7.5

- Professional quality B.P.O. 316 connector
- Rugged solid brass construction
- Space saving slimline housing
- Nickel plated brass contacts
- Chuck type strain relief
- Red or black matt finish
- Suitable for high density jackfields, patchpanels etc.

Housing Machined brass, matt red or black coated
Insulator Glass reinforced nylon 66
Contacts Brass, nickel plated

224146

Colour	Mfrs. List No.	Order Code	Price Each			
			1+	10+	50+	100+
Red	NP3TB-R	439-113				
Black	NP3TB-B	439-125				

5mm Pitch Screw Terminal Block



3 Pin A Series Frame



2008253



2008254

NEW

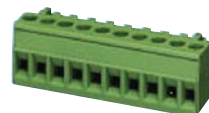
- Pitch spacing: 5mm
- Right angle through hole PCB mount
- No. of ways: 3
- Current rating per contact: 6A
- Voltage rating: 50V
- Contact material: Brass
- Durability: >1000 cycles

644216

List No.	Mfrs. Order Code	Price Each			
		1+	10+	50+	100+
NC3MAMH-PH	200-8253				
NC3MAFH-PH	200-8254				

Pluggable Terminal Blocks

Screw connection



Ways	Mfrs. List No.	Order Code	Price Each			
			1+	10+	50+	100+
3	MSTBT 2,5/3-ST	179-2778				

Loudspeaker

2-Pole DIN , High Quality



Plug Body size
L=27.5, Dia=15.0

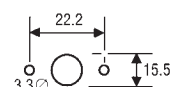


Elbow plug Body size
H=28.5, W=15.0, D=15.5

Chassis socket
H=29.0,
W=17.6,
D=15.5

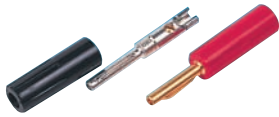
Cable entry = 6.3

Two high quality speaker plugs with solid turned pins and screw terminations. A rear or front panel mounting socket is available with solder tab terminations. All manufactured in black plastic.



2Order Multiple=	Order Code	2+	10+	50+	100+	500+	Price Each
Plug	150-850						
Elbow plug	150-851						
Chassis socket	150-852						

4mm, Wide Cable Entry



4mm plugs suitable for large diameter loudspeaker cable. The plugs feature a large solder bucket, which may be crimped, and will accept a conductor of 5.5mm diameter. Also available with extra screw termination option. Finished with nickel or 0.5 micron gold plated contacts, and a red or black acetal screw-on-cover.

L=48.75, Dia. = 10, Cable entry = 7.1 max.

Current rating 10A
Contact resistance 10mohmmax.

FOR SUITABLE SPEAKER CABLE SEE PAGE 0000

224195

Mfrs.	List No.	Order Code	1+	5+	50+	100+	500+	Price Each
Nickel - Solder Termination								
	579-0500	Red	119-3884					
	579-0100		119-3885					
Gold - Solder Termination								
	580-0500	Red	119-3886					
	580-0100	Black	119-3887					
	583-0500	Red	119-4016					
	583-0100	Black	119-4017					
Gold - Screw Termination								
	584-0500	Red	119-4018					
	584-0100	Black	119-4019					

'Speakon' - Loudspeaker Connectors 2 Pole



- 2-pole SPEAKON version
- High current contacts - non arcing
- Positive Keying and Latching
- Plug mates with 4 pole socket
- Small size
- Fully CE marked
- EMC shielded. Specifications as per pole below
- Combo versions include an integrated 6.35mm phono jack

452068.256709

Mfrs.	List No.	Order Code	1+	10+	50+	100+	Price Each
	Plug	NL2FC	310-4394				
	Solder Tabs Socket	NL2MP	310-4400				

'Speakon' Loudspeaker Connectors - 4 Pole



Meeting the requirements of all major broadcasting authorities, these rugged, 'Quicklock' latching 4-pole connectors are for professional loudspeaker/amplifier interconnections. For ease of assembly, all terminations are solderless. The chassis socket is airtight, and fits cut-outs for existing audio connector types. The coupler enables in-line connection of two plugs for cable extensions.

All contacts are 'touch proof' and meet the safety requirements of IEC65/348.

Current rating 30A rms (per contact) continuous
Operating voltage 250V ac
Test voltage 4250V pp
Contact resistance ≤3mohm(5000 operations)
Insulation resistance >10⁸Ω

Housing PA6, 30% GR
Contacts Zinc alloy, silver plated
Insulator PA6, 15% GR
Temperature range -30°C to 80°C

- Sockets available with faston or screw termination
- Jack adaptor allows a standard 1/4" jack plug to fit into the back of a Speakon plug - Max current 6A
- Moisture gland prevents moisture and condensation entering the rear of the plug
- Right angle converter allows users to quickly change the NL4FX plug from straight to right angle and back again as required. No need to remove the plug from the lead - Just unscrew the backshell, clip the converter round the lead and screw backshell in to place.

Mfrs.	List No.	Order Code	1+	10+	50+	100+	Price Each
	Plug	NL4FX	416-9426				
	Socket-Faston	NL4MP	152-306				
	Socket-Screw	NL4MP-ST	388-6219				
	Socket, PCB Horizontal	NL4MD-H-3	131-0126				
	Socket, PCB Vertical	NL4MD-V	131-0128				
	Coupler	NL4MMX	439-101				
	Socket - Panel Mount -Red	NL4MD-V-R	200-8251				

Coloured 'Speakon' Plugs



452069.278351

Mfrs.	List No.	Order Code	1+	10+	Price Each
	Colour				
	Red	NL4FX-2	802-0477		
	White	NL4FX-9	802-0507		

'Speakon' Loudspeaker Connectors - 8 Pole



'Speakon' - 8 Pole



Current rating 30A rms (per contact) continuous
Operating voltage 250V ac
Test voltage 4240V pp
Contact resistance ≤3(5000 operations)
Insulation resistance IEC68.2.11 : >10⁸Ω

Housing PA6.6, 30% GR
Contacts Zinc alloy, silver plated
Insulator PA6, 15% GR
Temperature range -30°C to 80°C

224199

Mfrs.	List No.	Order Code	1+	10+	50+	100+	500+	Price Each
	NL8FC	724-567						
	NL8MPR	724-579						
	NL8MPR-BAG	110-8200						

4-Pole 'Speakon' Loudspeaker Connectors STX Series



The new Speakon® STX Series is the next generation of 4-pole Speakon® connectors especially designed for loudspeaker - amplifier connections in harsh and demanding environment such as professional touring.

The STX Series features a metal housing which is extremely rugged and durable; built-in gaskets make it weatherproof. The new series offer beside the female cable connector and male receptacle now also a 4-pole male cable connector and female chassis connector.

- All-metal housing makes the STX Series rugged and durable
- Weatherproof built-in gasket meets IP54 protection class
- 4 type range - also male cable connector and female receptacle
- Ideal product for touring applications and harsh environments
- Best electrical performance up to 50 Amps
- One piece chuck design provides the attachment of 6 to 16mm O.D. cable
- Uses precise "quick lock" system
- Easy to assemble - Cable Connector has only 3 pieces
- Mates with all currently available 4 pole Speakon® products

Loudspeaker - continued

4-Pole 'Speakon' Loudspeaker Connectors - continued

STX Series - continued

Rated current per contact	40A rms continuous
Rated insulation voltage	50A audio signal, duty cycle 50%
Contact resistance after lifetime	250V AC
Insulation resistance	<2 mΩ
Dielectric strength	> 10GΩ
Cable O.D. range	4kV peak
Temperature range	9 - 16mm
Protection class	-30°C to +80°C
Housing	IP54 (mated condition)
Contacts	Female: Brass (CuZn39Pb3), Male: Copper (Cu)
	Zinc diecast (ZnAL4Cu1)

452098.345290

Description	Mftrs. List No.	Order Code	Price Each		
			1+	10+	25+
Female	NLT4FX	500-8426			
Male	NLT4MX	500-8438			
Chassis Female	NLT4FP	500-8440			
Chassis Male	NLT4MP	500-8451			

STX Series Series 8 Pole Speakon Connectors



- Robust metal housing designed for harsh and demanding environments
- Weatherproof (to IP54) design featuring sealing gaskets
- All metal housing
- Uses precise quick lock system
- Mate with all currently available Speakon products

Current Rating	40A rms per contact	Housing	Polyamide
Voltage Rating	250V ac	Contacts	Brass, Spring copper
Contact Resistance	< 2mΩ	Dimensions (WxHxD)	38x38x35.5mm

415528.407607

Description	Mftrs. List No.	Order Code	Price Each		
			1+	5+	25+
Nickel Plug	NLT8FX	999-1956			
Black-Chrome Plug	NLT8FX-BAG	999-1964			
Nickel Socket	NLT8MP	999-1972			
Black-Chrome Socket	NLT8MP-BAG	999-1980			
Sealing Gasket	SCNLT	831-4608			

Push Terminals — Speaker Cabinets

Dual or quad Terminals



Dual W=54, H=24, Fixing centres = 44
Quad W=70, H=25, Fixing centres = 60

- Red and black push terminals mounted on a black mounting bezel
- Ideal for mounting on speaker cabinets

240372

Order Code	Price Each				
	1+	25+	50+	100+	250+
Dual	414-9695				

Multipole - Circular

HR10A Series Multipole Connector



119-2439
L=16, Dia=14

119-2438
L=58.5, Dia=19

- Compact, low cost multipole connector
- Threaded coupling
- Same electrical performance as HR10
- Ideal application for audio/video and computer market

Contact rating	2A @ 100Vac/140Vdc	Housing	Zinc alloy, nickel plated matt finish
Withstand voltage	300Vac for 1 minute	Insulator	PBT Resin
Contact resistance	100mohm max	Contacts	Beryllium Copper

224223

No. of ways	Mftrs. List No.	Order Code	Price Each			
			1+	25+	50+	100+
Threaded Coupling						
12 free plug	HR10A-10TP-12P(73)	119-2438				
12 panel socket	HR10A-10TR-12S(73)	119-2439				

SR30 Multipole Connectors



Free plug L = 51.5, Dia = 13 Cable entry = 4.3 max	Panel socket Cut-out = 9, Dia = 18 Panel thickness = 7.5	Jack socket L = 53.5, Dia = 13 Cable entry = 4.3 max
--	--	--

- High quality, polarised, screw locking connectors
- Metal bodies and gold plated solder bucket contacts
- Designed for applications requiring reliable performance in a compact size
- Applications miniature microphones, radio communications and portable equipment

Current rating	1A	Insulation resistance	>
Working voltage	100V ac, 140V dc	Temperature range	-30°C to +85°C
Contact resistance	<10	Housing	Brass and Zinc Alloy, chrome and nickel plated

224224

No. of Poles	Mftrs. List No.	Order Code	Price Each			
			1+	25+	50+	100+
Free Plugs - Gold Plating						
4	SR30-10PE-4P(71)	119-2431				
6	SR30-10PG-6P(71)	119-2432				
Free Plugs - Silver Plating						
4	SR30-10PM-4P(71)	NEW 206-1627				
6	SR30-10PF-6P(71)	NEW 206-1626				
Panel Sockets - Gold Plating						
4	SR30-10R-4S(71)	119-2433				
6	SR30-10R-6S(71)	119-2434				
Jack Sockets - Gold Plating						
4	SR30-10JE-4S(71)	119-2435				
6	SR30-10JE-6S(72)	119-2436				

In Line and Panel — Connectors



Free plug L = 45.5, Dia = 21.8 Cable entry = 8.5 max	Free socket L = 45.5, Dia = 21.8	Panel socket H = 26, W = 26, D = 27 Panel cutout = 16dts Fixing centres = 20
--	-------------------------------------	---

High quality screw coupled connectors conforming to the Japanese **JIS C 5432** specification, for use in professional audio applications, mixing desks and sound recording equipment. Durable, screened aluminium alloy bodies and solder bucket contacts. The insert may be removed from the shell using an Allen key.

Current rating	5A	Insulation resistance	>
Working voltage	250V ac, 350V dc	Housing	Nickel plated, Aluminium Alloy
Proof voltage	1000V ac	Insulator	
Contact resistance	<5	Contacts	plated

224225

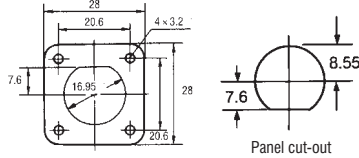
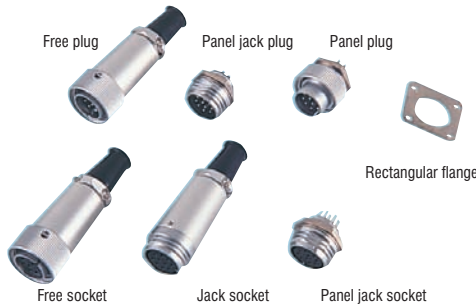
No. of Ways	Mftrs. List No.	Order Code	Price Each			
			1+	25+	50+	100+
Free Plug						
5	JR13PK-5P(71)	119-2429				
7	JR16PK-7P(71)	NEW 206-1623				
Free Socket						
5	JR13PK-5S(71)	119-2430				
Panel Socket						
5	JR13RK-5S	212-015				
7	JR16RK-7S	NEW 206-1625				

FREE GLOBAL LEGISLATION SUPPORT



RoHS, REACH, WEEE, ErP, Batteries Directive - latest updates, free white papers and live online Q&A at element14.com/legislation

RMT15T Threaded Video 10 and 12 Pole 5A



10 and 12 pole circular connectors for video equipment applications. These connectors use solder terminations and have thread coupling lock mechanisms. An Allen Key, is required to release the free plugs and sockets. A rectangular flange is available to simplify panel mounting.

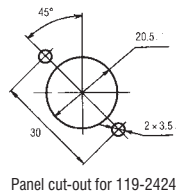
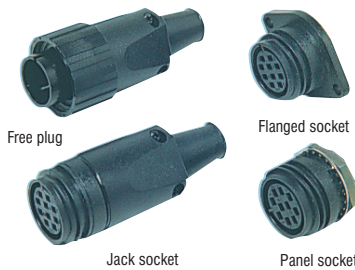
Current rating	5A	Housing	Aluminium Alloy
Operating voltage	350V ac to 490V dc	Insulators	, UL94V-0
Withstand operating voltage	1000V ac	Contacts	
Contact resistance	4 max @ 1A dc	Pin	Brass, silver plated
Max cable entry	8mm	Socket	CDA alloy silver plated

Mfrs. List No:	RM15TPD-10P(71) = 119-2410	RM15TPD-12S(71) = 119-2409
	RM15TPD-12P(71) = 119-2411	RM15TJD-10S(71) = 119-2418
	RM15TRD-10P(71) = 119-2415	RM15TJD-12S(71) = 119-2419
	RM15TRD-12P(71) = 119-2417	RM15TRD-10S(71) = 119-2412
	RM15TPRG-10P(71) = 119-2416	RM15TRD-12S(71) = 119-2414
	RM15TPD-10S(71) = 119-2408	RM15TR-F = 211-977

224226

No. of Poles	Order Code	1+	50+	100+	250+
Free Plugs					
10	119-2410				
12	119-2411				
Panel Jack Plugs					
10	119-2415				
12	119-2417				
Panel Plug					
10	119-2416				
Free Sockets					
10	119-2408				
12	119-2409				
Jack Sockets					
10	119-2418				
12	119-2419				
Panel Jack Sockets					
10	119-2412				
12	119-2414				
Rectangular Flange					
N/A	211-977				

RM215T Multipole Video Connectors - Plastic Threaded 10 Pole



Panel cut-out for 119-2424

Crimped video connectors with reinforced polycarbonate bodies. Fully compatible with the RM15T range, they offer the benefit of reduced weight and lower cost with an attractive black matt finish.

Crimp contacts for wire size 20-24 AWG are available separately in packs of 100.

Current rating	5A	Max cable entry	8mm
Operating voltage	333V ac	Housing	Glass Filled Polycarbonate UL94V-0
Withstand operating voltage	1000V ac	Insulators	Glass Filled Polycarbonate UL94V-0
Contact resistance	7mohm max @ 1A dc	Contacts	Silver plated Phosphor Bronze

Mfrs. List No:	RM215TPA-10PC(73) = 119-2423	RM-TC-11 = 212-118
	RM215TR-10SC(71) = 119-2424	

224227

Order Code	1+	25+	50+	100+	250+
Free Plug	119-2423				
Flanged Socket	119-2424				
Crimp Tools	212-118				

		Price Per Pack			
Contacts (Pack of 100)		1+	5+	10+	50+
Male	211-916				
Female	211-928				

Phono (RCA) Type

Phono Plugs



Low cost Phono (RCA) plugs with strain reliefs. Solder connection.

Supplied in packets of 10

369442.256770

Colour	Order Code	1+	10+	50+	100+
Red	128-0772				
Black	128-0773				

Phono Plugs - Large Cable Entry



- Suitable for general purpose audio/video and satellite TV applications
- Screw termination centre contact
- Large cable entry
- Integral black strain relief sleeve

Suitable cable CT100, RG59BU, UR202
Contacts Brass, nickel plated

152-422 L=55, Dia=11
152-423 H=31.5, W=12.5, D=34
Cable entry=6.2 max.

224152

	Order Code	1+	30+	60+	100+	250+	500+
Straight	152-422						
Right angle	152-423						

Phono (RCA) Plugs



Hollow and Solid Pin



- Machined brass construction
- Hollow pin silver plated
- Acetal back shell
- Solid pin gold plated
- Patented 'T'-slot ground contact

L=35, Dia=11.3 Cable entry=4.1 max.

Current rating 5A @ 200V dc/150V ac max.
Body Brass, nickel or gold plated
Back shell Acetal

Insulator Noryl
Contacts Brass, nickel or gold plated

224153

Mfrs. List No.	Order Code	1+	50+	100+	250+	500+
Hollow Pin						
Red	413-0500	119-4043				
Black	413-0100	119-4044				
Solid Pin Gold Plated						
Red	416-0500	119-4046				
Black	416-0100	119-4047				

Phono Plugs — Gold Plated



3 Cable Entry Sizes



- High quality Gold plated phono plugs
- Colour coded identification band
- Coil spring strain relief
- Knurled body
- Solder terminations

Phono (RCA) Type - continued

Phono Plugs — Gold Plated - continued

3 Cable Entry Sizes - continued

Order Code	Price Each				
	1+	25+	50+	100+	250+
5-6mm Cable Entry					
Red Band 128-0691					
Black Band 128-0692					
6-7mm Cable Entry					
Red Band 128-0693					
Black Band 128-0694					
9mm Cable Entry					
Red Band 128-0695					
Black Band 128-0696					

Phono Connectors with Metal Housing

STO series



Phono connector with metal housing (blank) and strain relief bushing.



STO 2

STO 11V

Mfrs. List No.	Colour	Order Code	Price Each				
			1+	10+	50+	100+	500+
STO2	Red	121-7003					
STO2	Black	120-0138					

Phono Plugs



High quality phono plugs featuring gold plated contacts. Maximum 6mm cable diameter.



Description	Mfrs. List No.	Order Code	Price Each		
			1+	10+	100+
Red	NYS373-2	463-2886			
Black	NYS373-0	463-2898			
Yellow	NYS373-4	500-8475			
Green	NYS373-5	500-8487			
Blue	NYS373-6	500-8499			
White	NYS373-9	500-8505			

Phono (RCA) Plugs - Solid Pin



- Machined brass construction
- Accept colour coded ring
- Improved solder bucket
- Spring strain relief
- 3 options of finish
- Patented 'T'-slot ground contact

L=55.4, (37.2 exel spring), Dia=10.8, Cable entry=5.5 max.

Finish	Order Code	Price Each					
		1+	50+	100+	250+	500+	1K+
	119-4006						
Black / Gold	119-4007						
	119-4009						

Phono (RCA) Plugs - Anodised Housing



Colour Coded Anodised Housings



- Colour coded housings
- Gold plated brass contacts
- Solid centre pin
- Large solder bucket
- PTFE insulator
- Large cable entry
- Pre-formed cable clamp
- Patented 'T'-slot ground contact

L=60.5, (45 excl. spring), Dia.=10.8 Cable entry=5.5 max.

Current rating	5A @ 200V dc/150V ac max.	Strain relief spring	Black chrome
Insulation resistance	@ 500V dc	Insulator	PTFE
Housing	Anodised Aluminium, colour coded	Contacts	Brass Gold Flash plated

Mfrs. List No.	Body Colour	Order Code	Price Each				
			1+	50+	100+	250+	500+
346-0100	Black	119-3950					
346-0200	Blue	119-3951					
346-0500	Red	119-3952					
346-0700	Yellow	119-3953					

Phono (RCA) Plugs - High End



L=62.6, (46.3 excl. spring), Dia.=12.4, Cable entry=5.5 max.

- Machined brass construction
- 0.5 micron gold plated contacts
- Solid centre pin
- Large solder bucket
- PTFE insulator
- Fully shrouded ground contact
- Maximum RFI/EMI shielding
- Large cable entry
- Patented 'T'-slot ground contact

Current rating	5A @ 200V dc/150V ac max.	Strain relief springs	Black chrome or
Insulation resistance	@ 500V dc	Insulator	PTFE
Housing	Brass, black chrome red/white colour coding	Contacts	Brass

Colour Code	Mfrs. List No.	Order Code	Price Each				
			1+	25+	50+	100+	250+
Black Chrome Cap/Spring							
Red	321-0500	119-3956					
White	321-0600	119-3957					

Phono Connectors



- Stylish design
- Flexible grommet cable protection
- Robust diecast shell
- Good solderability
- Gold plated contacts
- Quick and easy assembly

Colour	Order Code	Price Each			
		1+	25+	50+	100+
Phono Plugs					
Red	134-9054				
Black	134-9055				
White	134-9056				
Phono Sockets					
Red	134-9057				
Black	134-9058				
White	134-9059				

'Profi' Phono (RCA) Plugs



L=54 max, Dia=13, Cable entry=3.0-7.3

- Gold plated contacts
- Spring loaded earth contact
- Makes ground before signal
- Breaks signal before ground
- Prevents possible noise damage
- Chuck type strain relief
- Two strain relief size options
- Wide cable entry range
- Matt black finish, colour coded
- Supplied as pair with strain reliefs



TROUBLESHOOTING TIPS

Chat online to one of our technical engineers at farnell.com

Current rating 16A per contact
 Rated voltage 50V
 Mfrs. List No. NF2C2B

Housing Contacts Metal Pin Brass, gold plated

224166

2 Per Pack	Order Code	Price Per Pair				
		1+	25+	50+	100+	250+
Red and Black	187-1039					

Phono Adaptors – Chassis Mount



Gold plated Phono(RCA) socket to socket adaptors for chassis mounting. Also feature interlocking insulating washers and colour coded inner insulation.

415509.256738

Colour	Order Code	Price Each			
		1+	25+	100+	+
Black	128-0657				
Red	128-0658				
Yellow	128-0659				
White	128-0660				

Phono Chassis Sockets - Colour Coded Gold Plated Option



- Metal chassis mounting phono sockets
- Colour coded insulators
- Single 6.25mm diameter hole fixing
- Gold plated option

240382

Pack	Quantity	Order Code	Price Per Pack				
			1+	25+	50+	100+	250+
Nickel Plated							
Red	10	128-0679					
Black	10	128-0680					
Gold Plated							
Black	1	128-0686					
Red	1	128-0717					

RCA Series Phono Sockets

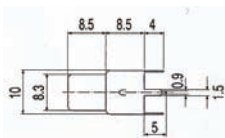


- Panel mount
- Gold plated RCA/phono contacts, with black, red, yellow or white isolation washers for colour coding
- Solder contacts to rear

372762.345292

Colour	Mfrs. List No.	Order Code	Price Each	
			1+	10+
Black	NYS367-0	500-8517		
Red	NYS367-2	500-8529		
Yellow	NYS367-4	500-8530		
Green	NYS367-5	500-8542		
Blue	NYS367-6	500-8554		
White	NYS367-9	500-8566		

Vertical Phono Socket



A PCB mount phono socket with vertical PCB pins.

2 Per Pack

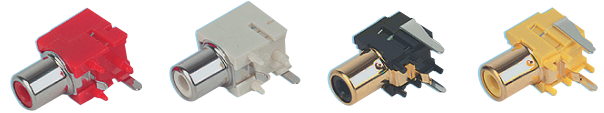
382822.345108

Order Code	Price Per Pack			
	1+	25+	50+	100+
126-7399				

Phono Sockets — PCB Mounting/90°



Gold Plated



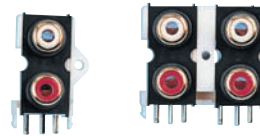
- 90° PCB mounting phono sockets
- Colour coded housing and insulators
- Gold plated

2 Per Pack

240416

Colour	Order Code	Price Per Pack				
		1+	25+	50+	100+	250+
Gold Plated, 3 Terminal						
Black	128-0699					
Red	128-0700					
Yellow	128-0702					
White	128-0701					

PCB Mount Phono Sockets



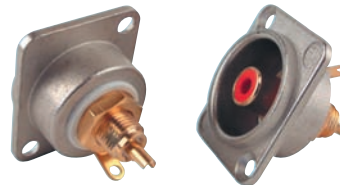
A range of PCB mountable Phono Sockets, available with straight connectors or at a 90° angle. Contacts and terminals are available in either nickel or gold plated.



246850

Description	Order Code	Price Each			
		1+	10+	50+	100+
Nickel Plated	128-0668				
Nickel Plated	128-0669				

D type Phono Sockets



High quality D mount phono sockets designed to fit standard 24mm D type cut-outs. Featuring gold plated contacts and are available with red or white inserts.

333701.278382

Colour	Order Code	Price Each			
		1+	10+	50+	100+
Nickel shell					
Black	500-8578				
Red	463-2862				
Yellow	500-8580				
White	463-2874				
Black shell					
Black	500-8610				
Red	500-8621				
Yellow	500-8633				
White	500-8669				

Scart Type

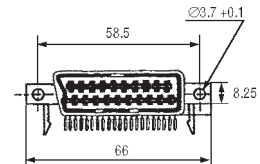
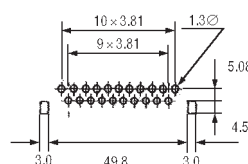
Plug and Socket



Plug



PCB socket



Scart Type - continued

Plug and Socket - continued

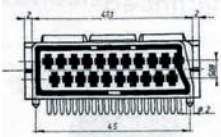
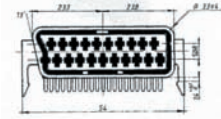
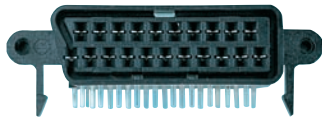
The plug is supplied with 20 crimp terminals which may be soldered if preferred.

FOR SUITABLE CRIMP TOOL SEE **CRIMP TERMINALS SECTION**

224236

	Order Code	Price Each				
		1+	10+	50+	100+	250+
Plug	121-9349					
PCB Socket	128-0719					

Scart Sockets - PCB Mount



246855

Description	Order Code	Price Each			
		1+	10+	50+	100+
Vertical PCB Mount Socket + Ears	128-0719				
PCB Mount Scart Socket, 90° + Ears	128-0722				
Scart Socket, 90° Mount	128-0720				

XLR Type

XLR/6.35 Phone Jack

AC Series-C

NEW

Amphenol



These feature two connectors in the one space saving housing. A combined XLR receptacle together with a 6.35mm phone jack give the designer more flexibility ensuring premium board space is saved.

- Current rating: 7.5A
- Durability: 1500 cycles
- Colour: Black

618688

Switching Type	Mftrs. List No.	Order Code	Price Each			
			1+	10+	50+	100+
Vertical - Through Hole						
Non-Switching	ACJC6V	183-5511				
Switching	ACJC9V	183-5512				
Horizontal - Through Hole						
Non-Switching	ACJC6H	183-5513				
Switching	ACJC9H	183-5514				
Vertical - SMT						
Non-Switching	ACJC6S	183-5515				
Switching	ACJC9S	183-5516				

XLR A Series

AC Series

Amphenol



NEW

- PCB mounted
- Compact shell design
- Contact plating: Gold
- Durability: 1500 mating cycles

618694

Latching Type	Ways	Mftrs. List No.	Order Code	Price Each			
				1+	10+	50+	100+
Socket - Horizontal - No Ground							
Latching	3	AC3FAH-AU-B	183-5517				
Non Latching	3	AC3FAHL-AU-B	183-5519				
Socket - Horizontal - Ground Link							
Latching	3	AC3FAH1-AU-B	183-5521				
Non Latching	3	AC3FAHL1-AU-B	183-5522				
Latching	5	AC5FAH-AU-B	183-5532				

Latching Type	Ways	Mftrs. List No.	Order Code	Price Each			
				1+	10+	50+	100+
Socket - Vertical - No Ground							
Latching	3	AC3FAV-AU-B	183-5523				
Non Latching	3	AC3FAVL-AU-B	183-5524				
Socket - Vertical - Ground Link							
Latching	3	AC3FAV1-AU-B	183-5525				
Non Latching	3	AC3FAVL1-AU-B	183-5526				
Latching	5	AC5FAV-AU-B	183-5533				
Plug - Horizontal - No Ground							
Latching	3	AC3MAH-AU-B	183-5527				
Plug - Horizontal - Ground Link							
Latching	3	AC3MAH1-AU-B	183-5528				
Latching	5	AC5MAH-AU-B	183-5534				
Plug - Vertical - No Ground							
Latching	3	AC3MAV-AU-B	183-5529				
Plug - Vertical - Ground Link							
Latching	3	AC3MAV1-AU-B	183-5530				
Latching	5	AC5MAV-AU-B	183-5535				

XLR Cable Connectors

AX Series

NEW

Amphenol



The revolutionary AX series of XLR connectors introduce an exciting contemporary look and feel to the professional audio interconnect market. An impressive list of features guarantees pure sound performance in the most demanding applications.

- Compact 14AWG solder buckets reduce soldering time
- Durability: 100 cycles
- Termination: Solder

618715

Ways	Mftrs. List No.	Order Code	Price Each			
			1+	10+	50+	100+
Socket - Nickel Finish						
3	AX3F	183-5540				
4	AX4F	183-5542				
5	AX5F	183-5545				
Socket - Black Finish						
3	AX3FB-AU	183-5541				
4	AX4FB-AU	183-5544				
5	AX5FB-AU	183-5546				
Plug - Nickel Finish						
3	AX3M	183-5547				
4	AX4M	183-5549				
5	AX5M	183-5551				
Plug - Black Finish						
3	AX3MB-AU	183-5548				
4	AX4MB-AU	183-5550				
5	AX5MB-AU	183-5552				

XLR Socket to XLR Plug Cable Assembly

Amphenol



- Heavy duty screened cable
- Ultra flexible
- No. of ways: 2
- Foil and braid shielding
- Insulator material: PVC
- Insulator colour: Black

NEW

618791

Cable Length	Mftrs. List No.	Order Code	Price Each			
			1+	10+	50+	100+
3 m	CA01-02-A-003	183-5504				
6 m	CA01-02-A-006	183-5505				
9 m	CA01-02-A-009	183-5507				
15 m	CA01-02-A-015	183-5508				

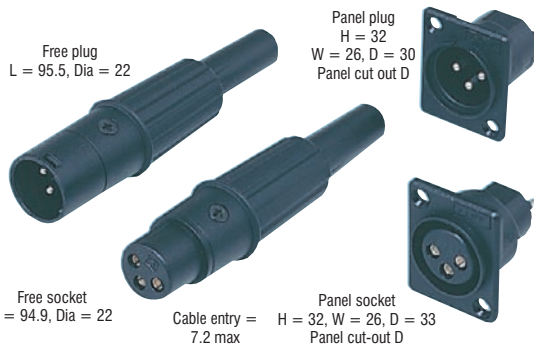
iBuy

INTELLIGENT ONLINE BUYING SYSTEM PROVIDING

Complete cost control, reduced administration time, visibility of your spend, flexibility and personalised to your company's needs.
farnell.com/ibuy

XLR Type - 3 Pole/Insulated

CLIFF



Free plug
L = 95.5, Dia = 22

Panel plug
H = 32
W = 26, D = 30
Panel cut out D

Free socket
L = 94.9, Dia = 22

Cable entry = 7.2 max
Panel socket
H = 32, W = 26, D = 33
Panel cut-out D

A range of lightweight yet robust, black plastic and audio connectors. Suitable for speaker connection or any other applications where screening is not essential. The free plugs feature a snap fit cable clamp/strain relief which substantially speeds up connector assembly time.

Contact rating	16A	Temperature range	-25°C to +70°C
Working voltage	250V ac	Housing	Matt black, glass filled nylon
Proof voltage	1600V ac	Contacts	Brass Silver over Nickel plated
Contact resistance	≤3		

224169

	Order Code	Price Each				
		1+	25+	50+	100+	500+
Free plug	149-322					
Free socket	149-323					
Panel plug	149-324					
Panel socket	149-325					

XLR Connectors



A range of professional quality XLR connectors available with coloured strain reliefs and the option of 3, 4 or 5-pole inserts.

- Solder connections
- Screw up collet
- 3 element cable clamp
- Colour coded moisture glands

382526.381697

Colour	Order Code	Price Each				
		1+	25+	100+	+	
3 Pole Plugs						
Black	128-0924					
Red	128-0925					
Blue	128-0926					
4 Pole Plugs						
Black	128-0929					
5 Pole Plugs						
Black	128-0935					
3 Pole Sockets						
Black	128-0940					
Red	128-0942					
Blue	128-0943					
4 Pole Sockets						
Black	128-0947					
5 Pole Sockets						
Black	128-0952					

8000 Series XLR Type

Precision engineering, robust audio/video connectors, of detailed ergonomic design for broadcast, studio and other professional applications. The connectors feature a unique colour coding system, a 'lever action' latching mechanism, finger grips, and are of screwless assembly.

Available in satin, nickel or black chrome finishes.

Current rating	3 Pole 16A 4 Pole 10A 5 Pole 7.5A	Housing	Diecast zinc, satin nickel or black chrome plated
Working voltage	250V ac	Insulator	Noryl, UL94V-1
Proof voltage	1.5kV ac	Contacts	Brass, 3 micron silver plated, anti-tarnish finish
Contact resistance	<3mΩ	Strain relief/sealing rings	Santoprene, UL94HB
Temperature range	-30°C to +80°C		

224170

XLR Type - In-line

DELTRON Components



Free plug
L = 65.5, Dia. = 20

Free socket
L = 67.5, Dia. = 20

Free plug
L = 65.5, Dia. = 20

Free socket
L = 67.5, Dia. = 20

- Lower cost versions of the metal backcap 7000 range
- Backcaps moulded from glass reinforced plastic (black)
- Metal connector housings same as 7000 series
- Female sockets feature stamped and formed contacts
- Up to 20% lower cost than metal backcaps
- Silver plated contacts anti-tarnish finish

224172

No. of Poles	Order Code	Price Each				
		1+	10+	50+	100+	250+
Nickel						
Free Plugs Mftrs. List No. = 801-0◆00						
3	119-4077					
5	119-4079					
Free Sockets Mftrs. List No. = 800-0◆00						
3	119-4080					
4	119-4081					
5	119-4083					
Black Chrome						
Free Plugs Mftrs. List No. = 805-0◆00						
5	119-4086					
Free Sockets Mftrs. List No. = 804-0◆00						
4	119-4088					

◆ Denotes number of poles.

XLR Type - Black Chrome

DELTRON Components



Free plug
L=68.2,
Dia. = 19.8
Cable entry = 2.8-8.0

Free socket
L=68.2,
Dia.=19.8

Panel plug
H=37.3,
W=23.1, D=30.6
Panel cut-out A

Panel socket
H=37.3,
W=27.4, D=37.1
Panel cut-out C

224174

No. of Poles	Order Code	Price Each				
		1+	10+	50+	100+	250+
Nickel						
Free Plugs Mftrs. List No. = 709-0◆00						
3	119-3912					
4	119-3913					
5	119-3914					
Free Socket Mftrs. List No. = 708-0◆00						
3	119-3915					
4	119-3916					
5	119-3917					
Panel Plugs Mftrs. List No. = 711-0◆00						
3	119-3918					
4	119-3919					
5	119-3920					
Panel Socket Mftrs. List No. = 710-0◆00						
3	119-3921					
4	119-3923					
5	119-3924					

◆ Denotes number of poles.

XLR Type - continued

XLR Type - Universal Panel Mounting



Panel Plug

Panel Socket

H=31, W=26
D=27.3 max. (behind panel)

H=31, W=26
D=28.8 max. (behind panel)

- Screened metal panel mounting plugs and sockets
- Standard hole cut-out, for front or rear mounting
- Front mounting enabling the use of colour coding studs

224175

No. of Poles	Order Code	1+	10+	50+	100+	250+	Price Each
Panel Plugs Nickel Mfrs. List No. = 717-0◆00							
3	119-3936						
4	119-3938						
5	119-3939						
Panel Plugs Black Chrome Mfrs. List No. = 719-0◆00							
3	119-3940						
4	119-3941						
5	119-3942						
Panel Sockets Nickel Mfrs. List No. = 716-0◆00							
3	119-3943						
4	119-3944						
5	119-3945						
Panel Sockets Black Chrome Mfrs. List No. = 718-0◆00							
3	119-3947						
4	119-3948						
5	119-3949						

◆Denotes number of poles.

XLR Cable Connectors AC Series



- Zinc diecast shell
- Solder bucket connections
- "Jaws" cable retention system
- Precision machined or stamped contacts
- Leading first mate last break socket contact
- Quick and easy assembly without screws

Electrical Specifications

Contact Resistance	≤3mΩ
Insulation Resistance	>MΩ
Dielectric Strength	1500V dc
Rated Current per contact	A3-pole: 7.5A 4-pole: 10 5-pole: 7.5A
Capacitance between contacts	3-pole: 5-pole:
Rated Voltage	50V

Mechanical Specifications

Lifetime	> 1000 mating cycles
Insertion / Withdrawal Force	≤
Cable Outside Diameter Range	-
Maximum Wire Size	3-pole: 18AWG 4-pole: 16AWG 5-pole: 18AWG

Operating Temperature	-25 to 75°C
Flammability	UL94V-0
Protection	IP40

473922.473805

Poles	Colour	Order Code	1+	25+	50+	100+	Price Each
Plugs							
3	Nickel	134-9034					
5	Nickel	134-9043					
Sockets							
3	Nickel	134-9032					
4	Nickel	134-9036					
5	Nickel	134-9040					

Q-G® Series XLR Connectors



The Q-G® series from Switchcraft provide a simple and rapid solution to cable assembly and repair. The two part construction reduces the number of components required during assembly.

- Only two pieces to assemble
- Easy twist on handle reduces assembly time
- Rugged die-cast metal handle
- Strain relief accommodates wide cable OD ranges
- Metal body
- 3-pole, silver plated contacts

337560.343624

Description	Mfrs. List No.	Order Code	Price Each			
			1+	10+	50+	100+
XLR Plug - Metal	AAA3MZ	119-2893				
XLR Socket - Metal	AAA3FZ	119-2894				

XLR Type - 'NC' Series (BBC Approved)

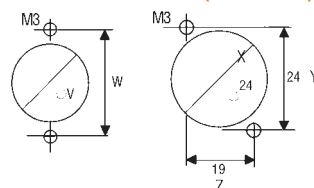


Meeting the requirements of all major broadcasting authorities, this range of connectors has been designed for professional, industrial and commercial applications, wherever reliability and performance is the foremost requirement. A self-adjusting strain relief prevents damage to cable sleeve (no metal parts, no screws), yet withstands in excess of 50kg of stress. Nickel plated or matt black finish.

Contact rating	16A	Housing	Diecast zinc, sandblasted, copper and nickel or black chrome plated
Working voltage	150V AC	Plug	Glass reinforced nylon
Contact resistance	≤3mΩ	Socket	Glass reinforced polyester
		Isolator	Brass, mercury dipped and silver plated, tarnish resistant or 0.5 micron gold plated (black only)
		Contacts	
		Terminations	Solder bucket

224181

Panel Hole Cut-Outs (Front Side)



Cut-out	V	W	X	Y	Z
A	20.0	27.0	-	-	-
B	-	-	24.0	24.0	19.0
C	-	-	24.5	26.2	16.7
D	-	-	21.5	24.0	18.0

224180

In Line and Panel - 3 to 7 Pole Nickel Shell, Silver Contacts



Free plug	Free socket	Panel plug	Panel socket
L=69, Dia=19.2	L=72, Dia=19.2	H=36.7, W=22	H=36.7, W=27
Cable entry=2.8-8		Panel cut out A	Panel cut out C

NC3MX and NC3FX available unassembled in bulk boxes of 100

231129

No. of Poles	Order Code	1+	10+	50+	100+	500+	Price Each
Free Plugs Mfrs. List No.=NC◆MX							
3	308-766						
4	250-752						
5	250-764						
6	261-002						
7	261-014						
		1+	10+	50+	100+	500+	
3 (Bulk Box 100)	388-6062						
Free Sockets Mfrs. List No.=NC◆FX							
3	308-778						
4	250-788						
5	250-790						
6	261-026						
7	261-038						
3 (Bulk Box 100)	388-6050						
Panel Plugs Mfrs. List No.=NC◆MP							
3	308-791						
4	250-818						
5	250-820						
Panel Sockets Mfrs. List No.=NC◆FP1							
3	308-780						
4	250-843						
5	250-855						

◆Denotes number of poles.

The first online technical portal for design engineers
Log on, research, refine and design

XLR Type - In Line and Panel - 3 to 7 Pole



In Line and Panel - 3 to 7 Pole

Black Shell, Gold Contacts



Free plug
L=69, Dia=19.2
Cable entry=2.8-8

Free socket
L=72, Dia=19.2
Cable entry=2.8-8

Panel plug
H=36.7, W=22
Panel cut out A

Panel socket
H=36.7, W=27
Panel cut out C

231136

No. of Poles	Order Code	Price Each				
		1+	10+	50+	100+	500+
Free Plugs Mftrs. List No. = NC♦MXB						
3	308-808					
4	250-879					
5	250-880					
6	261-040					
7	261-051					
Free Sockets Mftrs. List No. = NC♦FXB						
3	308-810					
4	250-909					
5	250-922					
6	261-063					
7	261-075					
Panel Plugs Mftrs. List No. = NC♦MPB						
3	308-833					
4	250-946					
5	250-958					
Panel Sockets Mftrs. List No. = NC♦FP1B						
3	308-821					
4	250-971					
5	250-983					

♦Denotes number of poles.

XLR Connectors

XX Series



- Unique cage type female contact increases conductivity
- Female contact with solder stop for ease of soldering
- Male connector without locking window
- Improved chuck type strain relief
- New ground contact creates excellent contact integrity between chassis and cable connector
- Steel ergonomic design
- Colour coded bushes and coding rings available

Poles	Mftrs. List No.	Order Code	Price Each		
			1+	10+	50+
Sockets - Nickel					
3	NC3FXX	999-1760			
4	NC4FXX	110-8201			
5	NC5FXX	110-8204			
6	NC6FXX	110-8208			
7	NC7FXX	110-8210			
Sockets - Black					
3	NC3FXX-BAG	999-1778			
4	NC4FXX-BAG	110-8203			

Poles	Mftrs. List No.	Order Code	Price Each		
			1+	10+	50+
Sockets - Black with gold contacts					
3	NC3FXX-B	999-1786			
4	NC4FXX-B	110-8202			
5	NC5FXX-B	110-8205			
7	NC7FXX-B	110-8211			
Plugs - Nickel					
3	NC3MXX	999-1794			
4	NC4MXX	110-8212			
5	NC5MXX	110-8215			
6	NC6MXX	110-8217			
7	NC7MXX	110-8221			
Plugs - Black					
3	NC3MXX-BAG	999-1808			
4	NC4MXX-BAG	110-8214			
Plugs - Black with gold contacts					
3	NC3MXX-B	999-1816			
4	NC4MXX-B	110-8213			
5	NC5MXX-B	110-8216			
6	NC6MXX-B	110-8218			
7	NC7MXX-B	110-8222			

Colour	Mftrs. List No.	Order Code	Price Each		
			1+	10+	50+
Colour Coded Bushes					
Red	BXX2	999-1832			
Orange	BXX3	999-1840			
Yellow	BXX4	999-1859			
Green	BXX5	999-1867			
Blue	BXX6	999-1875			
Violet	BXX7	999-1883			
White	BXX9	999-1905			

415521.407415

Colour	Mftrs. List No.	Order Code	Price Each		
			1+	10+	50+
Order Multiple=5					
Colour Coding Rings					
Red	XXR2	100-4878			
Orange	XXR3	100-4879			
Yellow	XXR4	100-4880			
Green	XXR5	100-4881			
Blue	XXR6	100-4882			
Violet	XXR7	100-4883			
White	XXR9	100-4885			

Right-angled XLR Connectors



RX Series



Ø20.4mm L=71.4mm H=41mm

Ø20.4mm L=69.3mm H=38.5mm

- Extra slim right-angled connector
- Improved chuck style strain relief
- 5 selectable cable outlet positions

Electrical Specifications

Contact Resistance	≤3mΩ
Insulation Resistance	>MΩ
Dielectric Strength	1500V dc
Rated Current per contact	3-pole: 16A 5-pole: 7.5A
Rated Voltage	50V

Mechanical Specifications

Lifetime	> 1000 cycles
Insertion / Withdrawal Force	≤20N
Cable Outside Diameter Range	3.5 - 8mm
Maximum Wire Size	3-pole: 2.5mm ² /14AWG 5-pole: 1.0mm ² /18AWG
Operating Temperature	-30 - 80°C
Flammability	UL94HB
Protection	IP40

Right-angled XLR Connectors - continued

RX Series - continued

451877.460814

Poles	Shell	Contact	Mftrs.		Price Each			
			List No.	Order Code	1+	10+	50+	100+
Sockets								
3	Nickel	Silver	NC3FRX	130-9954				
3	Black Cr	Gold	NC3FRX-B	130-9962				
3	Black Cr	Silver	NC3FRX-BAG	130-9965				
5	Nickel	Silver	NC5FRX	130-9967				
5	Black Cr	Silver	NC5FRX-B	130-9970				
Plugs								
3	Nickel	Silver	NC3MRX	130-9974				
3	Black Cr	Gold	NC3MRX-B	130-9977				
3	Black Cr	Silver	NC3MRX-BAG	130-9981				
5	Nickel	Silver	NC5MRX	130-9983				
5	Black Cr	Silver	NC5MRX-B	130-9988				

Heat Resistant XLR Connectors

XX-HE Series



- Velour Chrome plating
- Extra high temperature resistant insulator material

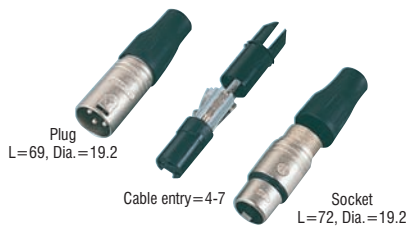
- Machined female contacts

Electrical Specifications		Electrical Specifications	
Contact Resistance	≤3mΩ	Cable Outside Diameter Range	3.5 - 8mm
Insulation Resistance	>MΩ	Maximum Wire Size	2.5mm ² /14AWG
Dielectric Strength	1500V dc	Operating Temperature	-30 - 80°C
Rated Current per contact	16A	Shell	Velour Chromium
Capacitance between contacts	4pF	Contacts	Bronze
Rated Voltage	50V	Contact Plating	Gold
Mechanical Specifications		Flammability	UL94HB
Lifetime	> 1000 cycles	Protection	IP40
Insertion / Withdrawal Force	≤20N		

451935.460816

Description	Mftrs.		Price Each			
	List No.	Order Code	1+	10+	50+	100+
3-Pole Socket	NC3FXX-HE	130-9991				
3-Pole Plug	NC3MXX-HE	130-9993				

IDC Termination XLR Type - 3 Pole



- No stripping or tinning of wires
- Double IDC terminations accept 26AWG to 24 AWG wires
- No assembly tools required
- No soldering-fully field serviceable

- Special ground contact
- Choice of shell grounding
- Same rugged construction as standard XLR connectors

Current rating	10A	Housing	Diecast zinc, sandblasted, copper and nickel plated
Working voltage	150V	Insulator	Glass reinforced Nylon 66
Shield contact resistance	<3mΩ	Contacts	Female Silver plated copper/tin alloy
Connector contact resistance	<5mohm		Male Silver plated mercury dipped brass
Capacitance between contacts	<4pF	Wire size	26-24AWG (0.14mm ² - 0.22mm ²)

224182

Description	Mftrs.		Price Each			
	List No.	Order Code	1+	10+	50+	100+
Plug	NC3MXY	439-010				
Socket	NC3FXV	439-022				



Plug
L=69, Dia.=19.2



Socket
L=72, Dia.=19.2

- An extremely rugged 3-pole free plug and socket
- Suited for use in outdoor hostile environments
- Offering dust and water protection to IP65 when mated
- The plug's shell is of stainless steel
- The socket's shell and gland is of diecast zinc,
- An internal O-ring, a rubber jacket, and polyurethane strain relief
- Minimum IP54 rating with most other mating connectors or microphones

Electrical Specifications

Contact Resistance	≤3mΩ
Insulation Resistance	>MΩ
Dielectric Strength	1500V dc
Rated Current per contact	3-Pole: 16A 4-Pole: 10A 5-Pole: 7.5A
Rated Voltage	50V

Mechanical Specifications

Lifetime	> 1000 cycles
Insertion / Withdrawal Force	≤20N
Cable Outside Diameter Range	3.5 - 8mm
Maximum Wire Size	3-Pole: 2.5mm ² /14AWG 4-Pole: 1.5mm ² /16AWG 5-Pole: 1.0mm ² /18AWG
Operating Temperature	-30 - 80°C
Shell	Stainless Steel
Contacts	Brass
Contact Plating	Gold
Flammability	UL94HB
Protection	IP65

451937.460817

Poles	Mftrs.		Price Each			
	List No.	Order Code	1+	10+	50+	100+
Sockets						
3	NC3FXHD	152-308				
4	NC4FX-HD	130-9996				
5	NC5FX-HD	131-0000				
Plugs						
3	NC3MXHD	152-307				
4	NC4MX-HD	131-0002				
5	NC5MX-HD	131-0006				

Panel Mounted Heavy Duty XLR Connectors



MPR-HD Series



- Protected to IP65 - when used with Neutrik NCxFX-HD connectors
- Ideal for outdoor applications
- Sealing gasket for a water-tight panel mount
- Gold plated contacts

Ø23.8mm L=24.9mm

Electrical Specifications

Contact Resistance	≤5mΩ	Insertion / Withdrawal Force	≤35N
Insulation Resistance	>MΩ	Panel Cutout	Ø 20.6mm
Dielectric Strength	1500V dc	Operating Temperature	-30 - 80°C
Rated Current per contact	3-Pole: 16A 4-Pole: 10A 5-Pole: 7.5A	Shell	Nickel
		Contacts	Brass
Rated Voltage	50V	Contact Plating	Gold
		Flammability	UL94HB
		Protection	IP65

452056.460821

Description	Mftrs.		Price Each			
	List No.	Order Code	1+	10+	50+	100+
3-Pole Panel Plug	NC3MPR-HD	131-0102				
4-Pole Panel Plug	NC4MPR-HD	131-0105				
5-Pole Panel Plug	NC5MPR-HD	131-0108				

X-Series Screened XLR Connectors



- 3 pole connector for digital audio
- Screening 50X better than standard XLR, up to 1.3Ghz -55db
- Ideal for use in high RF areas
- High performance glass reinforced plastic holds contacts securely in place

Electrical	
No Contacts	3
Rated Current	16A
Contact Resistance	≤3mΩ
Insulation Resistance	≥GΩ
Dielectric Strength	1500 Vdc
Mechanical	
Mating Cycles	1000
Insertion/Withdrawal Force	≤20N
Mating Cycles	1000
Cable OD Range	3.5mm - 8.0mm
Max Wire Size	2.5mm ² - 14 AWG

Environmental	
Temperature Range	-30°C to 80°C
Flamability	UL94-HB
Materials	
Shell	Zinc Die-cast Galvanised Nickel finish
Inserts	Polyamide
Contacts-Male	Brass - Gold plated
Contacts -Female	Bronze - Gold plated

Mfrs.		Price Each			
List No.	Order Code	1+	10+	50+	100+
Female	NC3FXCC	388-6177			
Male	NC3MXCC	388-6189			

XLR Connectors with EMI Protection

EMC-XLR

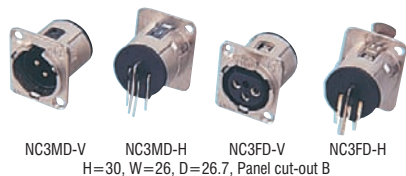


- 3-pole cable connectors with integrated LC-filter to avoid RF interference and RF noise
 - 360° shield contact on the female connector ensures the best possible shielding and chassis contact
 - Design guarantees a continuous RF-shield connection but avoids ground loops
- Applications:**
- RF sensitive applications
 - Critical systems
 - Applications near radio systems, cell phones, lighting installations etc

Electrical Specification		Mechanical Specification	
Poles	3	Life time (mating cycles)	>1000
Rated Current (per contact)	5A	Cable ∅ Range	4.0mm - 7.0mm
Shielding effectiveness	>55dB bei 1GHz	Wiring	Soldered, 24-20 AWG
Contact Resistance	≤3mΩ	Operating Temperature	-30°C to +80°C
Insulation resistance	≥GΩ	Flammability	UL94-HB
Dielectric Strength	1500 VDC	Housing	Zinc Die-cast
		Insulation	PA 6.6, 30% GR
		Contacts	CuSn6, gold plated

Mfrs.		Price Each				
Colour	List No.	Order Code	1+	10+	25+	50+
XLR Plug						
Nickel	NC3MX-EMC	999-1948				
XLR Socket						
Nickel	NC3FX-EMC	999-1930				

XLR Type PCB Mounting - 3 Pole Die Cast

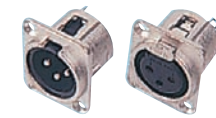


- Unified metal shell for male and female
- Insert premounted to PCB, shell to enclosure
- Front or rear mount
- RF protected
- Available with either plain screw fixing holes or tapped M3 thread

Mfrs.		Price Each				
List No.	Order Code	1+	10+	50+	100+	500+
Plugs - Plain Fixing Holes						
Straight	NC3MDV	308-845				
90°	NC3MDH	308-857				
Sockets - Plain Fixing Holes						
Straight	NC3FDV	308-869				
90°	NC3FDH	308-870				
Plugs - M3 Thread Fixing Holes						
Straight	NC3MDM3V	439-058				
90°	NC3MDM3H	439-060				
Sockets - M3 Thread Fixing Holes						
Straight	NC3FDM3V	439-071				
90°	NC3FDM3H	439-083				
Fitting Tool	SD-1	269-803				

XLR Type - Unified Panel Mounting

3 to 7 Pole



- Screened, metal panel plugs and sockets
- Standard hole cut-out, for front or rear panel mounting
- Solder bucket terminals. Available with either plain screw fixing holes or tapped M3 thread.

H=30, W=26, D=24.0 max (behind panel).

No. of Poles	Order Code	1+	10+	50+	100+	500+
Panel Plugs - Plain Fixing Holes						
3	250-995					
4	251-008					
5	251-010					
6	261-087					
7	261-099					
Panel Sockets - Plain Fixing Holes						
3	251-021					
4	251-033					
5	251-045					
6	261-105					
7	261-117					
Panel Plug - M3 Thread Fixing Holes						
3	439-034					
Panel Socket - M3 Thread Fixing Holes						
3	439-046					

XLR Standard Connectors

3, 4 and 5 pins



- Standard XLR Connectors
- Available in 3, 4 and 5 pins
- Ideal for audio and video applications

No. of Ways	Description	Order Code	1+	10+	50+	100+	500+
Free Plugs							
3	Left-hand thread, Silver	171-5962					
3	Left-hand thread, Black	171-5964					
4	Strain relief, Silver	171-5965					
4	Left-hand thread, Silver	171-5969					
4	Strain relief, Black	171-5970					
5	Strain relief, Black	171-5974					
Free Sockets							
3	Left-hand thread, Silver	171-5945					
3	Left-hand thread, Black	171-5946					
4	Left-hand thread, Silver	171-5953					
5	Left-hand thread, Silver	171-5957					
5	Strain relief, Black	171-5958					
Panel Plugs							
3	Rectangular, Silver	171-5959					
3	Rectangular, Black	171-5960					
3	Circular, Silver	171-5961					
Panel Sockets, with latch, Silver							
3	Rect., with Earth Terminal	171-5950					
3	Circular	171-5952					
3	Rect. with Nickel Earthing Strip	171-5949					
4	Rectangular	171-5956					

XLR Panel Connectors

AC "Z" Series



- Zinc diecast shell
- D size housing can be front or rear mounted using the same panel cut-out
- Solder bucket connections
- Leading first mate last break socket contact
- Positive latch lock system

XLR Panel Connectors - continued

AC "Z" Series - continued

Electrical Specifications

Contact Resistance	≤3mΩ
Insulation Resistance	>MΩ
Dielectric Strength	1500V dc
Rated Current per contact	3-pole: 7.5A 4-pole: 10A 5-pole: 7.5A
Capacitance between contacts	3-pole: 5-pole:
Rated Voltage	50V

Mechanical Specifications

Lifetime	> 1000 mating cycles
Insertion / Withdrawal Force	≤
Cable Outside Diameter Range	-
Maximum Wire Size	3-pole: 18AWG 4-pole: 16AWG 5-pole: 18AWG

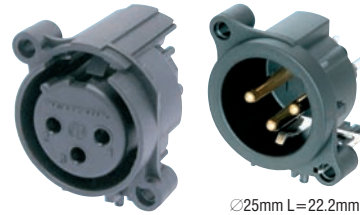
Operating Temperature

Flammability	-25 to 75°C
Protection	UL94V-0 IP40

473921.473805

Poles	Colour	Order Code	Price Each			
			1+	25+	50+	100+
Plugs						
3	Nickel	134-9006				
3	Black	134-9007				
4	Nickel	134-9010				
4	Black	134-9011				
5	Nickel	134-9015				
Sockets						
3	Nickel	134-9008				
3	Black	134-9009				
4	Nickel	134-9012				
4	Black	134-9013				
5	Nickel	134-9018				
5	Black	134-9019				

AA Series



∅25mm L=22.2mm

- Cutout and PCB layout compatible with Neutrik 'A' Series connectors
- "Tulip" style contact design with high contact pressure
- Selective gold plated contact area with silver plated PCB contacts for improved solderability

Electrical Specifications

Contact Resistance	≤8mΩ
Insulation Resistance	>MΩ
Dielectric Strength	1500V dc
Rated Current per contact	6A
Capacitance between contacts	7pF
Rated Voltage	50V

Mechanical Specifications

Lifetime	> 1000 cycles
Insertion / Withdrawal Force	≤20N
Panel Cutout	∅ 22mm
Mounting Holes	2x ∅3.2mm diagonally on a 19.8mm square
Operating Temperature	-30 - 80°C
Shell	Black Plastic
Contacts	Bronze
Contact Plating	Gold
Flammability	UL94HB
Protection	IP40

451993.460818

Retention Method	Grounding Option	Mfrs. List No.	Order Code	Price Each			
				1+	10+	50+	100+
3-Pole Sockets - Horizontal Mounting							
Latch	GND on Pin 1	NC3FAAH1	131-0019				
Latch	GND Pin	NC3FAAH2	131-0023				
3-Pole Sockets - Vertical Mounting							
Latch	GND on Pin 1	NC3FAAV1	131-0035				
Latch	GND Pin	NC3FAAV2	131-0038				
3-Pole Plugs - Horizontal Mounting							
Latch	No GND	NC3MAAH	131-0044				
3-Pole Plugs - Vertical Mounting							
Spring	No GND	NC3MAAV-0	131-0050				

XLR Chassis Connectors



- Metal XLR connectors
- Front or rear panel mount
- Unified 24mm ∅cutout
- Latching
- Solder bucket terminals
- Compact design for limited panel space

369532.345037

Description	Order Code	Price Each			
		1+	10+	25+	100+
Nickel					
Chassis Plug	128-0893				
Chassis Socket	128-0894				
Black					
Chassis Plug	128-0895				
Chassis Socket	128-0896				

Unified XLR Panel Mount Connectors



A range of XLR connectors for front mounting. The connectors have plastic shells and feature solder bucket terminations.

- Panel cut-out: Plug 19.5mm, Socket 24mm
- Dimensions (WxHxD): Plug 22x36.7x29.8mm, Socket 27x36.7x39.8mm

333699.278441

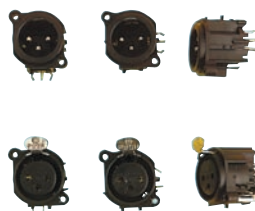
Mfrs. List No.	Order Code	Price Each			
		1+	10+	25+	50+
NC3MPP	463-2990				
NC33FPP	463-3003				



INTELLIGENT ONLINE BUYING SYSTEM PROVIDING

Complete cost control, reduced administration time, visibility of your spend, flexibility and personalised to your company's needs.
farnell.com/ibuy

XLR Type PCB Mounting - Plastic



- Smallest size/highest packing density
- Gold plated TF contacts
- Fastening self tapping screws 2.9 x 1.06
- 3 or 5 pin versions

Flammability rating	UL94V-0
Female pin "1" and ground connected	(A)
Rated current	6A

224185

Panel Plugs - 3 Pin	Order Code	Price Each			
		1+	10+	50+	100+
Horizontal PCB	724-543				
Vertical PCB	724-531				
Horizontal PCB & Pin "1"	724-518				
Vertical PCB & Pin "1"	724-506				
Horizontal PCB	802-0396				
Horizontal PCB	802-0418				

PCB Mounted 5-Pole XLR Connectors



A Series



∅25mm L=26.7mm

- Small XLR receptacles allow a high packing density
- Plastic housing, steel retention lug
- Fork type female contacts
- Polished contact areas and hard gold plating
- Spring retention
- Vertically mounted
- Ground connected to shell

Electrical Specifications

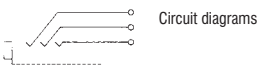
Contact Resistance	≤5mΩ	Panel Cutout	∅ 22mm
Insulation Resistance	>MΩ	Mounting Holes	2x ∅3.2mm diagonally on a 19.8mm square
Dielectric Strength	1500V dc	Operating Temperature	-30 - 80°C
Rated Current per contact	3A	Materials	
Capacitance between contacts	7pF	Shell	Black Plastic
Rated Voltage	50V	Contacts	Bronze (female) / Brass (male)
		Contact Plating	Gold
		Flammability	UL94HB
		Protection	IP40

Mfrs.		Price Each				
Description	List No.	Order Code	1+	10+	50+	100+
5-Pole Socket	NC5FAV-SW	131-0093				
5-Pole Plug	NC5MAV-SW	131-0098				

Combined PCB XLR - 1/4" Jack Socket - 3 pole Switched and Unswitched



90°: H=34, W=24, D=35.95
Panel cut-out B



Straight: H=30, W=24, D=38.1
Panel cut-out B



- A panel socket that accepts either a 3 pole XLR or 1/4" jack plug saving both component cost and pcb/panel space
- The socket avoids the possibility of both inputs being used simultaneously

Current rating	7.5A per contact	Housing	Polyamide
Working voltage	250V ac	Contacts	Copper/tin alloy, gold plated
Breakdown	1500V dc	Brackets	Copper/tin alloy, nickel plated
Contact resistance	≤3mohm per contact	Temperature	-20°C to 65°C

Mfrs.		Price Each			
List No.	Order Code	1+	10+	50+	100+
Straight					
NCJ6FI-V	Unswitched	500-8347			
90°					
NCJ6FI-H	Unswitched	500-8360			
NCJ9FI-H	Switched	500-8372			
Solder					
NCJ6FI-S	Unswitched	500-8384			

Accessory Plates



A range of lettering and blanking plates designed to fit standard audio cut-outs.

Colour		Price Each	
Lettering Plates	Order Code	1+	10+
Black	463-3015		
Red	463-3039		
Yellow	463-3052		
Green	463-3064		
Blue	463-3076		
White	463-3106		
Blanking Plate			
Black	463-3118		

D Series Covers



SCDF Rubber sealing covers for the D-Series female receptacles to protect the connectors against dust and moisture.
SCDM Rubber sealing cover for the D-Series male receptacles and for the Speakon male receptacles (NL2MP and NL4MP) to protect the connectors against dust and moisture.

Mfrs.		Price Each	
List No.	Order Code	1+	10+
SCDF	500-8670		
SCDM	500-8682		

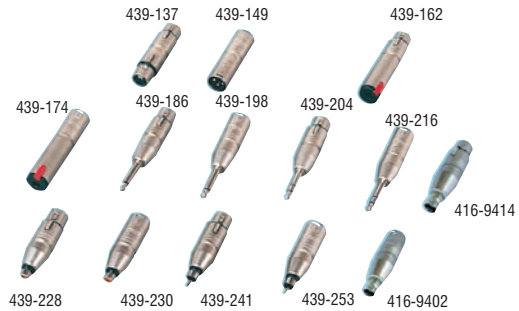
XLR Panel Mount Adaptors



- Current rating per contact: 16A
- Durability: 1000 mating cycles
- Operating temperature: -30°C to +80°C
- Locking Device: Latch lock

Mfrs.		Price Each			
Description	List No.	Order Code	1+	10+	50+
Female to Male	NA3FDM	181-3713			
Male to Female	NA3MDF	181-3714			

XLR Adaptors Nickel



Mfrs.		Price Each			
Output	List No.	Order Code	1+	10+	50+
XLR Socket	NA3FF	439-137			
6.35mm Stereo Jack Socket	NA3FJ	439-162			
6.35mm Mono Jack Plug	NA2FP	439-186			
6.35mm Stereo Jack Plug	NA3FP	439-204			
Phono Socket	NA2FPMF	439-228			
Phono Plug	NA2FPMM	439-241			
XLR Plug	NA3MM	439-149			
6.35mm Stereo Jack Socket	NA3MJ	439-174			
6.35mm Mono Jack Plug	NA2MP	439-198			
6.35mm Stereo Jack Plug	NA3MP	439-216			
Phono Socket	NA2MPMF	439-230			
Phono Plug	NA2MPMM	439-253			
BNC Socket	NA2MBNC	416-9414			

3-Pin to 5-Pin XLR DMX Adaptors



XLR adaptors for DMX lighting system interconnections.

Mfrs.		Price Each			
3-Pin	5-Pin	List No.	Order Code	1+	10+
Plug	Socket	NA3M5F	500-8700		
Socket	Plug	NA3F5M	541-4829		

XLR Type - Miniature

Tiny XLR 5 Way

NEW

Re'an



RT5FC-B



RT5FC-B-W



RT5MP

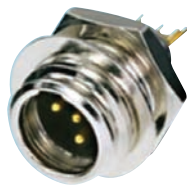
- Current rating per contact: 5A
- Contact plating: Gold
- Durability: > 1000
- Shell colour: Black

644534

Description	Mfrs.	Order Code	Price Each			
	List No.		1+	10+	50+	100+
Receptacle						
Cable Mount	RT5FC-B	200-8258				
Cable Mount Waterproof	RT5FC-B-W	200-8259				
Plug						
Chassis Mount	RT5MP	200-8260				

Tiny XLR Connector

Re'an



NEW

- Current rating per contact: 5A
- Operating temperature: -30°C to +80°C
- Durability: 1000 mating cycles

613645

Mfrs. List No.	No. of ways	Order Code	Price Each				
			1+	10+	50+	100+	+
Socket							
RT3FC-B	3	181-3715					
RT4FC-B	4	181-3719					
Socket - Water resistant							
RT3FC-B-W	3	181-3716					
RT4FC-B-W	4	181-3720					
Plug							
RT3MP	3	181-3718					
RT4MP	4	181-3721					

Mini XLR Standard Connectors

multicomp



- Standard mini XLR Connectors
- Available in 3 and 4 pins
- Ideal for audio and video applications

601072

No. of Ways	Cable Entry	Order Code	Price Each			
			1+	10+	50+	100+
Free Plugs						
3	3mm	171-5966				
4	3mm	171-5971				
Free Sockets						
3	3mm	171-5947				
3	5mm	171-5948				
4	3mm	171-5954				
4	5mm	171-5955				
Panel Plugs						
3		171-5967				
4		171-5972				

Mini XLR - 'Tini Q-G' Series

Switchcraft



Free plug	Free socket	Panel plug	Panel socket
L = 51.7, Dia = 10.5 Cable entry = 3.0 dia	L = 48.3, Dia = 10.5	Cut-out = 11, D = 17.5 Panel thickness = 7 max.	Cut-out = 15.2 Fix. cent = 17.1 11.4 H = 24.4, W = 18.8

- 'Tini Q-G' miniature latching instrumentation connectors, available in 3, 4 and 5 ways, having integrally moulded cable relief
- The all-metal bodies are precision machined and nickel plated
- Their small size makes them ideal for portable instruments and equipment

Current rating	Housing	Working voltage	Contact resistance	Temperature range
3+4 pole 5A 5 pole 4A	Circular plugs and panel sockets Square panel sockets Contacts	125V ac	≤10mR	-55°C to +85°C

224221

No. of Poles	Order Code	1+	10+	50+	100+	250+
Free Plugs Mfrs. List No. = TA♦M						
3	119-2834					
4	119-2835					
5	119-2836					
Free Sockets Mfrs. List No. = TA♦F						
3	119-2832					
4	119-2837					
5	119-2833					
Panel Plugs Circular Mfrs. List No. = TB♦M						
3	145-141					
4	145-142					
5	145-143					
Panel Sockets Square — Solder Lug Mfrs. List No. = TY♦FPC						
3	145-144					
4	119-2889					
5	697-898					
Panel Socket Square — Straight PCB Mount Mfrs. List No. = TY♦FPC						
♦ Denotes number of poles						

Mini XLR 'Tini Q-G' Series

Switchcraft

'Tini Q-G' Series

3 Pole, 90° PCB Plug



- Rear mounting
- Right angled construction
- PCB terminals
- Rigid pin orientation

H = 18.8, W = 15.5,
D = 26.9, Cut-out = 15.2
Max. Panel Thickness = 4mm

Current rating	Temperature range	Housing	Plugs	Pin contacts	Contact resistance	Mating cycle
5A @ 125V ac	-55°C to +85°C	Brass, Nickel Plated		Copper alloy, Electro tinned	≤10mR	5000 operation minimum

224222

Mfrs. List No.	Order Code	1+	10+	50+	100+	+
TRA3M	119-2902					

IMPROVED BACK ORDER DELIVERY

Receive email updates with the exact status, due date and despatch information of all your back order items farnell.com

Lumberg – for 80 years Lumberg has provided the industry with high-tech, high quality interconnect solutions. As an industry leader in interconnect technology, Lumberg's core areas of expertise lie in R&D, Manufacturing, Electromechanical Design and Component Assembly. Our application expertise can be demonstrated in our industry-wide acceptance and over 20,000 products sold within the Automotive, Telecommunications, Home Appliance, Building Technology, Consumer Electronics and Solar industries.



DIN circular connectors

- easy mounting
- for signal and low load currents up to 4 A
- wide range of chassis parts, 3 to 8 poles
- versions without lock and with bayonet lock, Push-Pull
- compatible system according to IEC



Circular connectors with threaded joint

- safe connection
- easy mounting
- with or without 360° shielding
- for signal and load currents up to 5 A
- wide range of chassis parts, up to 14 poles
- compatible system according to IEC 61076-2-106

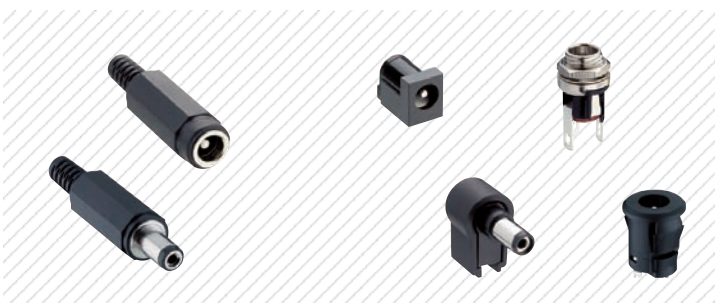


Jack connectors

- according to JIS C 6560 and JEITA RC-5325A
- three sizes: 2.5, 3.5 and 6.35 mm diameter
- for low load currents up to 2 A, audio signal

RCA connectors

- according to JEITA RC-5231
- for low load currents up to 2 A, audio/video signal currents



Power supply connectors

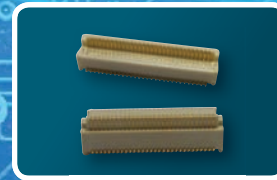
- for power supply of small electric devices
- many sizes: 1.7-6.5 mm diameter
- standardized e.g. according to JEITA RC-5320A as well as JEITA RC-5322 for automotive applications
- for low load currents up to 4 A



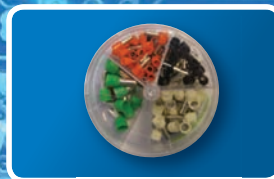
USB connectors

- for signal and low load currents up to 1 A
- according to USB 2.0 and USB 3.0 specification
- data transmission rates of up to:
 - 480 Mbit/s (USB 2.0)
 - 500 Mbyte/s (USB 3.0)

Design with confidence...



PCB Connectors



Crimp Connectors



RF Coaxial Connectors



Audio Connectors



Multipole Connectors



DIN Rail Terminals



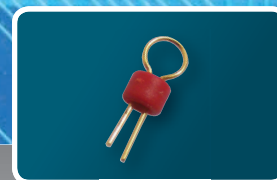
Signal & Data Connectors



Power Connectors



IDC Connectors



Test Connectors

The Multicomp product range consists of over 25,000 stocked products available for next day delivery! Key product ranges include Passives, Semiconductors, Connectors, Switches and Fans.

- Huge choice, ranging from audio to signal & data
- Wire to-Board & Board-to-Board Selection
- Order from Farnell for next day delivery with fast, reliable service and support
- Excellent range and value for money - Exclusive to Farnell

For the full range and technical information visit www.farnell.com/multicomp

 **multicomp**