

**Order Info and Available Configurations: 2009 +**

1POLRC – Complete Cab

1POLRCWD – Complete Cab W/O Doors

1POLRDR – Doors Only

**RCS RANGER Specifications:**

Application: 2009-Current Polaris Ranger

Enclosure Weight: 192 lbs Installed (Full cab)

Color: Black (only)

**Order Info and Available Configurations: 2004 thru 2008**

2874660 – ROPS CAB FOR RANGER

2874886 – WINDSHIELD KIT FOR RANGER

2874887 - 067 – MODULAR ROOF KIT FOR RANGER

2874888 – REAR PANEL KIT FOR RANGER

2875015 – OVERHEAD CONSOLE FOR RANGER

28753934 - 067 – MODULAR HARD DOORS FOR RANGER

2875941 - 067 – ROPS HARD DOORS FOR RANGER ROPS

9DL01C – LEFT & RIGHT HANDLE DOOR HANDLE FOR RANGER

UTV-02 – UTV REPLACEMENT WINDSHIELD FOR RANGER

**Trusted for over 40 years**

Curtis has specialized in the design, manufacture and distribution of quality vehicle enclosures, plow systems and accessories for golf cars, utility vehicles and compact tractors for over 40 years.



Compact Tractor Cabs



Utility Vehicle Snowplows and Spreaders



Climate Control Golf Cab Systems



Utility Vehicle Cabs



Truck Snowplows

\* Some golf cars equipped with non standard equipment.  
 \*\* Prices, product and specifications are subject to change without notice or liability.  
 Availability is subject to production, stocking and demand.  
 Multiple U.S. and foreign patents pending.

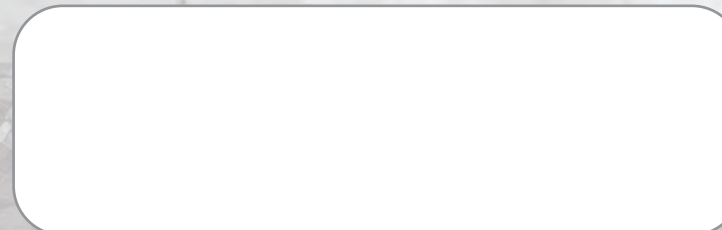


[www.CurtisCab.com](http://www.CurtisCab.com)

Curtis Industries LLC  
 111 Higgins Street  
 Worcester, MA 01606

[www.curtiscab.com](http://www.curtiscab.com)  
 800-343-7676

Authorized Dealer:



**Rapid Convertible System®**

World's Finest Side x Side Enclosure



*The Curtis RCS Cab provides the ultimate in versatility and durability. The integrated components work as one modular solution to any weather condition!*

**Polaris® Ranger**

# UNIQUE ON DEMAND VERSATILITY

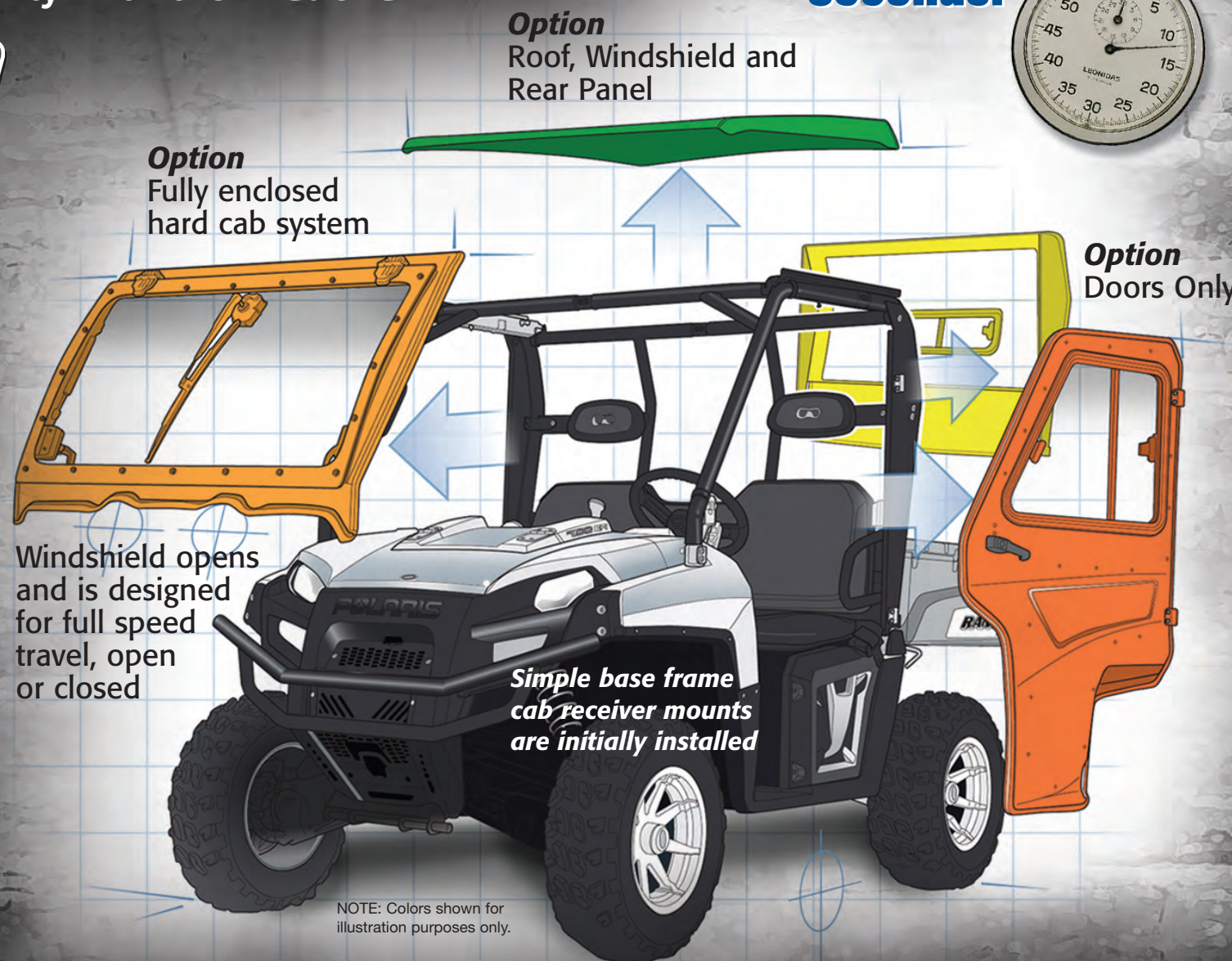
Revolutionary Modular Cab System  
Fully-Enclosed to Open-Air Ride In Just Seconds  
Fast Flexibility with the **Weather**



See it to believe it!  
CurtisRCS.com



Transform your  
**UTV in 60  
Seconds!**

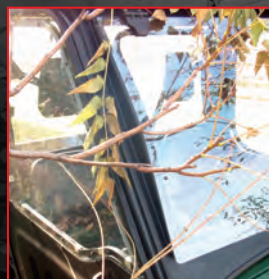


US and Foreign patents pending.

## Scratch Resistant & Strong

Specially Treated, Hard-Coated Polycarbonate Windshield "Better Than Glass"

- Extremely Impact Resistant
- Super Lightweight
- Windshield Quickly Vents for Varying Temperatures
- Optional Wiper Kit Available



## Advanced Body-Panel Technology

RCS Uses Thermoformed TPO Material, NOT ABS plastic or Fiberglass for all Body Panels

- TPO Offers Superior Low-Temp Impact Resistance (superior to ABS)
- Higher Heat-Deflection and Dimension Stability than Fiberglass or ABS



# Accessories

## Sno-Pro® Spreaders

### Fast Cast 550 1/3 Yard Spreaders

Light weight poly or aluminum hopper with reliable 5.5 hp Honda gasoline engine, excellent for spreading de-icers, salt, and free flowing material.



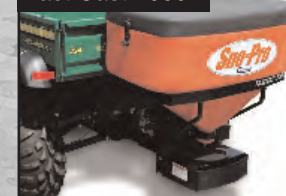
Aluminum Hopper



P/N 1CS6H

P/N 1CS6CPH

### Fast Cast 2000



### Sno-Pro Fast Cast 2000

Class III Reese or Optional Tractor 3-point mount, excellent for spreading de-icers, salt, and free flowing material.

P/N 1CS1

### Fast Cast 300



P/N 1CS9

### Sno-Pro Fast Cast 300 Economy

Class III Reese mount included  
Fast Cast 300 for spreading rock salt, etc. available optional vinyl cover.

### Fast Cast 400



### Sno-Pro Fast Cast 400

Class III Reese mount included  
Fast Cast 400 for spreading fine materials, shown with optional vinyl cover.

P/N 1CS10

## Sno-Pro® Plows

Poly Tapered Plow with Winch Lift  
Part Number: 1POLUTP

Steel Plow with Winch Lift  
Part Number: 1POLSP



## Ranger 20,000 BTU Heater

Powerful forced hot water heater. Installs under the hood and has OEM fit and style.

P/N 9PH20S39 - 2009 + Models  
P/N 9PH20S27 - All Other Models



## Ranger Wiper Kit

Heavy duty 12V system with full 110° sweep pattern.

P/N 1POLRWPR

