

HP ProDesk 600 G5 Desktop Mini PC



Flexible, expandable reliability and performance

Designed to fit the modern workspace, the stylish and ultra-small HP ProDesk 600 Desktop Mini is a powerful, reliable, and highly scalable PC with performance, security, and manageability features built to suit your mid-to-large business.



HP recommends Windows 10 Pro.

- Windows 10 Pro¹
- Intel® Core™ processors²

Business-ready performance

- Power through your day with a solution you can flexibly configure with up to a 9th Gen Intel® Core™ processor² and options that include Intel® Optane™ memory³ and SSD storage.⁴

Expansion that extends your investment

- Maximize PC life with dual M.2 slot and traditional SATA storage options.⁴ A configurable I/O port allows you to add VGA⁴ or serial⁴ legacy support or a third video connector⁴ for three displays⁵ or USB-C™ with 100W Power Delivery.⁴

Place it where you need it

- Install your Mini securely inside an HP Mini-in-One 24 Display⁶ or attach behind an HP display⁷—and power through USB-C™⁸. Mount⁹ with space-saving HP accessories.⁴ Streamline cabling with USB-C™ or optional HP Power Supply Holder.⁴
- Be productive in any situation with Windows 10 Pro and powerful security, collaboration, and connectivity features from HP.¹
- Firmware attacks can completely devastate your PC. Stay protected with HP Sure Start Gen5 self-healing BIOS.¹⁰
- Help protect your PC from websites and attachments with malware, ransomware or viruses with hardware-enforced security from HP Sure Click.¹¹
- The HP Manageability Integration Kit helps speed up image creation and management of hardware, BIOS, and security through Microsoft System Center Configuration Manager.¹³
- Simplify securing your PC. HP Client Security Manager offers a single interface to set up and manage your PC's powerful security features.¹²
- Keep productivity high and downtime low with HP BIOSphere Gen5 firmware-level automation. Your PCs have extra protection thanks to automatic updates and security checks.¹⁴
- ITDMs can quickly help create, improve, and secure custom Windows images with HP Image Assistant.
- Enjoy always-on, included self-help support built right into your PC, for the life of your PC, with HP Support Assistant.¹⁵
- Rest easy with a PC that goes the distance, is designed to pass 120,000 hours of HP's Total Test Process and has an optional dust filter to help extend the life of your PC.^{16,4}

HP ProDesk 600 G5 Desktop Mini PC Specifications Table



Available Operating Systems	Windows 10 Pro 64 – HP recommends Windows 10 Pro. ¹ Windows 10 Pro 64 (National Academic only) ^{1,13} Windows 10 Home 64 ¹ FreeDOS
Processor family¹⁴	8th Generation Intel® Core™ i3 processor (i3-8100T); 8th Generation Intel® Core™ i7 processor (i7-8700T); 9th Generation Intel® Core™ i3 processor (i3-9100T, i3-9300T); 9th Generation Intel® Core™ i5 processor (i5-9500T, i5-9600T); 9th Generation Intel® Core™ i7 processor (i7-9700T); 9th Generation Intel® Core™ i9 processor (i9-9900T); Intel® Celeron® processor (G4930T is Windows 10 only); Intel® Pentium® processor (G5420T, G5600T are Windows 10 only)
Available Processors^{16,20,30,31}	Intel® Core™ i3-8100T with Intel® UHD Graphics 630 (3.1 GHz base frequency, 6 MB cache, 4 cores) Intel® Core™ i3-9300T with Intel® UHD Graphics 630 (3.2 GHz base frequency, up to 3.8 GHz with Intel® Turbo Boost Technology, 8 MB cache, 4 cores) Intel® Core™ i3-9100T with Intel® UHD Graphics 630 (3.1 GHz base frequency, up to 3.7 GHz with Intel® Turbo Boost Technology, 6 MB cache, 4 cores) Intel® Pentium® Gold G5420T with Intel® UHD Graphics 610 (3.2 GHz base frequency, 4 MB cache, 2 cores) Intel® Pentium® Gold G5600T with Intel® UHD Graphics 630 (3.3 GHz base frequency, 4 MB cache, 2 cores) Intel® Celeron® G4930T with Intel® UHD Graphics 610 (3 GHz base frequency, 2 MB cache, 2 cores) Intel® Core™ i5-9500T with Intel® UHD Graphics 630 (2.2 GHz base frequency, up to 3.7 GHz with Intel® Turbo Boost Technology, 9 MB cache, 6 cores) supports Intel® vPro™ Technology Intel® Core™ i5-9600T with Intel® UHD Graphics 630 (2.3 GHz base frequency, up to 3.9 GHz with Intel® Turbo Boost Technology, 9 MB cache, 6 cores) supports Intel® vPro™ Technology Intel® Core™ i7-8700T with Intel® UHD Graphics 630 (2.4 GHz base frequency, up to 4 GHz with Intel® Turbo Boost Technology, 12 MB cache, 6 cores) supports Intel® vPro™ Technology Intel® Core™ i7-9700T with Intel® UHD Graphics 630 (2 GHz base frequency, up to 4.3 GHz with Intel® Turbo Boost Technology, 12 MB cache, 8 cores) supports Intel® vPro™ Technology Intel® Core™ i9-9900T with Intel® UHD Graphics 630 (2.1 GHz base frequency, up to 4.4 GHz with Intel® Turbo Boost Technology, 16 MB cache, 8 cores) supports Intel® vPro™ Technology
Chipset³⁰	Intel® Q370 (vPro); Intel® Q370 (non-vPro)
Form factor	Mini
Maximum memory	64 GB DDR4-2666 SDRAM ^{3,4,8} Transfer rates up to 2666 MT/s.
Memory slots	2 SODIMM
Internal storage	500 GB up to 2 TB SATA HDD ² 500 GB SATA SED Opal 2 HDD ² 500 GB SATA SED FIPS HDD ² 256 GB up to 512 GB SATA SSD ² 256 GB up to 512 GB SATA SED Opal 2 SSD ² 256 GB up to 512 GB SATA SED FIPS SSD ² 128 GB up to 1 TB PCIe® NVMe™ TLC M.2 SSD ² 256 GB up to 512 GB PCIe® NVMe™ SED Opal 2 TLC M.2 SSD ²
Storage acceleration³²	16 GB NVMe™ Intel® Optane™ Memory for storage acceleration
Available Graphics	Integrated: Intel® UHD Graphics 610; Intel® UHD Graphics 630 (Integrated graphics will depend on processor.)
Audio	Conexant CX20632 codec, universal audio jack, headset and headphone front ports (3.5 mm), multi-streaming capable
Expansion slots	1 M.2 2230; 2 M.2 2230/2280 (1 M.2 slot for WLAN and 2 M.2 2230/2280 slots for storage.)
Ports and Connectors	Front: 1 headset connector; 1 USB 3.1 Gen 1; 1 USB 3.1 Gen 2; 1 USB 3.1 Type-C™ Gen 2; 1 headphone connector Rear: 1 RJ-45; 2 DisplayPort™ 1.2; 2 USB 3.1 Gen 1; 2 USB 3.1 Gen 2 Optional: 1 DisplayPort™ 1.2; 1 serial; 1 VGA; 1 HDMI 2.0; 1 USB 3.1 Type-C™ Gen 2 (DisplayPort™); 1 USB 3.1 Type-C™ Gen 2 (Power Delivery, DisplayPort™) ¹⁸
Input devices	HP USB and PS/2 Washable Keyboard; HP USB Business Slim Keyboard; HP USB Business Slim Smart Card (CCID) Keyboard ⁶ ; HP USB 1000 dpi Laser Mouse; HP USB and PS/2 Washable Mouse; HP USB Optical Mouse ⁶ ;
Communications	LAN: Intel® I219LM GbE; WLAN: Intel® Dual Band Wireless-AC 9560 802.11ac (2x2) and Bluetooth® 5 M.2 PCIe®, non-vPro™ Intel® Dual Band Wireless-AC 9560 802.11ac (2x2) and Bluetooth® 5 M.2 PCIe®, vPro™ ^{5,30} ;
Drive Bays	One 2.5" ¹⁵
Environmental	Operating temperature: 10 to 35°C; Operating humidity: 10 to 90% RH
Available Software^{9,17,19,22,23,24}	Absolute Persistence module; Buy Office (sold separately); HP Hotkey Support; HP JumpStarts; HP LAN-Wireless Protection; HP Secure Erase; HP Support Assistant; HP Sure Click; HP Wireless Wakeup; Native Miracast Support; Windows Defender
Security management^{7,21,25,28,29}	DriveLock; Hood sensor; HP BIOSphere; HP Client Security Suite; HP Credential Manager; HP Password Manager; HP Power On Authentication; HP Spare Key; HP Sure Sense; HP Sure Start; Intel® Identity Protection Technology (Intel® IPT); Master Boot Record Security; Power-on password (via BIOS); Pre-boot Authentication; RAID configurations; SATA port disablement (via BIOS); Serial enable/disable (via BIOS); Setup password (via BIOS); Support for chassis padlocks and cable lock devices; Trusted Platform Module TPM 2.0 Embedded Security Chip shipped with Windows 10 (Common Criteria EAL4+ Certified)(FIPS 140-2 Level 2 Certified); USB enable/disable (via BIOS)
Management features	HP BIOS Config Utility (download); HP Client Catalog (download); HP Driver Packs (download); HP Image Assistant; HP System Software Manager (download); Update BIOS via Cloud or Network (BIOS feature); Ivanti Management Suite; HP Management Integration Kit for Microsoft System Center Configuration Management Gen 2 ^{10,26,27}
Power	65 W external power adapter, up to 89% efficiency
Dimensions	6.97 x 6.89 x 1.34 in
Weight	2.75 lb
Energy efficiency compliance¹¹	ENERGY STAR® certified; EPEAT® 2019 registered where applicable
Environmental specifications¹²	Low halogen

HP ProDesk 600 G5 Desktop Mini PC

Accessories and services (not included)

HP DM VESA Power Supply Holder Kit



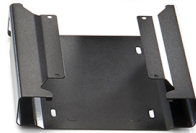
Simplify cable management when mounting your HP Desktop Mini with the HP DM VESA Power Supply Holder Kit, which attaches to your HP Desktop Mini Security/Dual VESA Sleeve v2 (2JA32AA) to reduce cable clutter from the PC's power supply cable and brick.
Product number: 1RL87AT

HP B300 PC Mounting Bracket



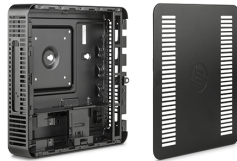
Customize an altogether better solution with the HP B300 PC Mounting Bracket, which lets you attach your HP Workstation, HP Desktop Mini, HP Chromebox or select HP Thin Client directly behind select 2017 and 2018 HP EliteDisplays and HP Z Displays.¹
Product number: 2DW53AT

HP Desktop Mini Security/Dual VESA Sleeve v2



Wrap your HP Desktop Mini PC in the HP Desktop Mini Security/Dual VESA Sleeve v2 to securely mount it—with or without an Expansion Module¹—behind your display, position the solution on a wall, and lock it down with the integrated security bracket and optional HP Ultra-Slim Cable Lock.
Product number: 2JA32AT

HP Desktop Mini LockBox V2



Fortify your HP Desktop Mini in a range of settings with the HP Desktop Mini LockBox V2¹, HP's most secure enclosure for your PC, power brick, and cable connections.
Product number: 3EJ57AT

HP DisplayPort Port Flex IO



Maximize the life of your PC as your business needs change with the flexible display connectivity of the HP DisplayPort Port Flex IO.
Product number: 3TK72AT

HP 8GB DDR4-2666 SODIMM



Boost the capabilities of your HP Business Desktop PC and improve system performance and application responsiveness with low-power, high-speed DDR4 memory from HP.
Product number: 3TK88AT

HP 4 year Next Business Day Onsite Hardware Support for Desktops



HP Care Pack

When hardware issues come up, the sooner you can get running again, the better. Have expertise at the ready with HP Hardware Next Business Day Onsite Service, and vastly improve your product uptime. With high-quality remote assistance or convenient onsite support available the next business day, help is there when you need it—so you can get back to work.
Product number: U7899E, UE334E

HP ProDesk 600 G5 Desktop Mini PC

Messaging Footnotes

- ¹ Not all features are available in all editions or versions of Windows. Systems may require upgraded and/or separately purchased hardware, drivers, software or BIOS update to take full advantage of Windows functionality. Windows 10 is automatically updated, which is always enabled. ISP fees may apply and additional requirements may apply over time for updates. See <http://www.windows.com>.
- ² Multi-Core is designed to improve performance of certain software products. Not all customers or software applications will necessarily benefit from use of this technology. Performance and clock frequency will vary depending on application workload and your hardware and software configurations. Intel's numbering, branding and/or naming is not a measurement of higher performance.
- ³ Intel® Optane™ memory is sold separately. Intel® Optane™ memory system acceleration does not replace or increase the DRAM in your system. Available for HP commercial desktops and notebooks and for select HP workstations (HP Z240 Tower/SFF, Z2 Mini, and ZBook Studio 15 and 17 G5) and requires a SATA HDD, 7th Gen or higher Intel® Core™ processor or Intel® Xeon® processor E3-1200 V6 product family or higher, BIOS version with Intel® Optane™ supported, Windows 10 version 1703 or higher, M.2 type Z280-S1-B-M connector on a PCH Remapped PCIe Controller and Lanes in an x2 or x4 configuration with B-M keys that meet NVMe™ Spec 1.1, and an Intel® Rapid Storage Technology (Intel® RST) 15.5 driver.
- ⁴ Sold separately or as an optional feature.
- ⁵ Displays sold separately. Support for up to three video outputs via two standard video connectors and an optional third video port connector, which provides the following choices: DisplayPort™ 1.2, HDMI 2.0, VGA or USB Type-C™ with Display™ Output.
- ⁶ HP Mini-in-One Z4 Display sold separately. PC must be configured with optional USB-C™ with 100W Power Delivery card.
- ⁷ Display sold separately. See display data sheet on hp.com for mounting bracket guidance.
- ⁸ Select HP EliteDisplays support USB-C™ Power Delivery. See display data sheet on hp.com for guidance. PC must be configured with optional USB-C™ with 100W Power Delivery card.
- ⁹ Mounting hardware sold separately.
- ¹⁰ HP Sure Start Gen5 is available on select HP PCs with Intel® processors. See product specifications for availability.
- ¹¹ HP Sure Click is available on select HP platforms and supports Microsoft Internet Explorer, Google Chrome™, and Chromium™. Supported attachments include Microsoft Office (Word, Excel, PowerPoint) and PDF files in read-only mode, when Microsoft Office or Adobe Acrobat are installed.
- ¹² HP Client Security Manager Gen5 requires Windows and is available on select HP Pro and Elite PCs. See product specifications for details.
- ¹³ HP Manageability Integration Kit can be downloaded from <http://www.hp.com/go/clientmanagement>.
- ¹⁴ HP BIOSphere Gen5 is available on select HP Pro and Elite PCs. See product specifications for details. Features may vary depending on the platform and configurations.
- ¹⁵ Requires Windows and Internet access.
- ¹⁶ HP Total Test Process testing is not a guarantee of future performance under these test conditions. Any accidental damage requires an optional HP Accidental Damage Protection Care Pack.

Technical Specifications Footnotes

- ¹ Not all features are available in all editions or versions of Windows. Systems may require upgraded and/or separately purchased hardware, drivers, software or BIOS update to take full advantage of Windows functionality. Windows 10 is automatically updated, which is always enabled. ISP fees may apply and additional requirements may apply over time for updates. See <http://www.windows.com>.
- ² For hard drives and solid state drives, GB = 1 billion bytes. TB = 1 trillion bytes. Actual formatted capacity is less. Up to 36 GB (for Windows 10) of system disk is reserved for the system recovery software.
- ³ For systems configured with more than 3 GB of memory and a 32-bit operating system, all memory may not be available due to system resource requirements. Addressing memory above 4 GB requires a 64-bit operating system. Memory modules support data transfer rates up to 2666 MT/s; actual data rate is determined by the system's configured processor. See processor specifications for supported memory data rate.
- ⁴ All memory slots are customer accessible / upgradeable.
- ⁵ Wireless access point and internet service required.
- ⁶ Availability may vary by country.
- ⁷ Intel® Identity Protection Technology (Intel® IPT): Models configured with Intel® Core™ processors have the ability to utilize advanced security protection for online transactions. Intel® Identity Protection Technology (Intel® IPT) used in conjunction with participating web sites, provides double identity authentication by adding a hardware component in addition to the usual user name and password. Intel® Identity Protection Technology (Intel® IPT) is initialized through an HP Client Security module.
- ⁸ Actual data rate is determined by both the system's configured processor and memory module installed.
- ⁹ Absolute Persistence module: is shipped turned off, and will be activated when customers activate a purchased subscription. Subscriptions can be purchased for terms ranging multiple years. Service is limited, check with Absolute for availability outside the U.S. The Absolute Recovery Guarantee is a limited warranty. Certain conditions apply. For full details visit: <http://www.absolute.com/company/legal/agreements/computrace-agreement>. Data Delete is an optional service provided by Absolute Software. If utilized, the Recovery Guarantee is null and void. In order to use the Data Delete service, customers must first sign a Pre-Authorization Agreement and either obtain a PIN or purchase one or more RSA SecurID tokens from Absolute Software.
- ¹⁰ HP Driver Packs: not preinstalled, however available for download at <http://www.hp.com/go/clientmanagement>.
- ¹¹ Based on US EPEAT® registration according to IEEE 1680.1-2018 EPEAT®. Status varies by country. Visit www.epeat.net for more information.
- ¹² External power supplies, power cords, cables and peripherals are not Low Halogen. Service parts obtained after purchase may not be Low Halogen.
- ¹³ Some devices for academic use will automatically be updated to Windows 10 Pro Education with the Windows 10 Anniversary Update. Features vary; see <https://aka.ms/ProEducation> for Windows 10 Pro Education feature information.
- ¹⁴ NOTE: Your product does not support Windows 8 or Windows 7. In accordance with Microsoft's support policy, HP does not support the Windows 8 or Windows 7 operating system on products configured with Intel® and AMD 7th generation and forward processors or provide any Windows 8 or Windows 7 drivers on <http://www.support.hp.com>
- ¹⁵ The 2.5" SATA drive bay can be both HDD and SSD.
- ¹⁶ Multi-core is designed to improve performance of certain software products. Not all customers or software applications will necessarily benefit from use of this technology. Performance and clock frequency will vary depending on application workload and your hardware and software configurations. Intel's numbering, branding and/or naming is not a measurement of higher performance.
- ¹⁷ Native Miracast Support is a wireless technology your PC can use to project your screen to TVs, projectors, and streaming.
- ¹⁸ Ports are optional and can be chosen only one by user.
- ¹⁹ HP Support Assistant requires Windows and Internet access.
- ²⁰ Intel® Turbo Boost technology requires a PC with a processor with Intel Turbo Boost capability. Intel Turbo Boost performance varies depending on hardware, software and overall system configuration. See www.intel.com/technology/turboboost for more information.
- ²¹ Trusted Platform Module TPM 2.0 Embedded Security Chip shipped with Windows 10 (Common Criteria EAL4+ Certified)(FIPS 140-2 Level 2 Certified): In some scenarios, machines pre-configured with Windows OS might ship with TPM turned off.
- ²² Windows Defender Opt In, Windows 10, and internet connection required for updates.
- ²³ HP Sure Click is available on select HP platforms and supports Microsoft Internet Explorer, Google Chrome™, and Chromium™. Supported attachments include Microsoft Office (Word, Excel, PowerPoint) and PDF files in read-only mode, when Microsoft Office or Adobe Acrobat are installed.
- ²⁴ HP Secure Erase: for the methods outlined in the National Institute of Standards and Technology Special Publication 800-88 "Clear" sanitation method.
- ²⁵ RAID configuration: sold separately or as an optional feature, multiple data drives setup in a RAID array is optional and requires product to be configured with vPro™ at purchase.
- ²⁶ HP Management Integration Kit for Microsoft System Center Configuration Management Gen 2: can be downloaded from <http://www8.hp.com/us/en/ads/clientmanagement/overview.html>
- ²⁷ Ivanti Management Suite: subscription required.
- ²⁸ HP Client Security Suite Gen 5: requires Windows and is available on select HP Pro and Elite PCs. See product specifications for details.
- ²⁹ HP Password Manager: requires Internet Explorer or Chrome™ or FireFox. Some websites and applications may not be supported. User may need to enable or allow the add-on / extension in the internet browser. HP Sure Start Gen 4: is available on HP ProDesk & ProOne products equipped with Intel® 8th generation processors.
- ³⁰ For full Intel® vPro™ functionality, Windows, a vPro supported processor, vPro enabled chipset, vPro enabled wired LAN card and discrete TPM 2.0 are required. See <http://intel.com/vpro>
- ³¹ Some functionality of vPro, such as Intel Active Management Technology and Intel Virtualization technology, requires additional 3rd party software in order to run. Availability of future "virtual appliances" applications for Intel vPro technology is dependant on 3rd party software providers. Compatibility with future "virtual appliances" is yet to be determined.
- ³² Intel® Optane™ memory is sold separately. Intel® Optane™ memory system acceleration does not replace or increase the DRAM in your system. Available for HP commercial desktops and notebooks and for select HP workstations (HP Z240 Tower/SFF, Z2 Mini, ZBook Studio, 15 and 17 G5) and requires a SATA HDD, 7th Gen or higher Intel® Core™ processor or Intel® Xeon® processor E3-1200 V6 product family or higher, BIOS version with Intel® Optane™ supported, Windows 10 version 1703 or higher, M.2 type Z280-S1-B-M connector on a PCH Remapped PCIe Controller and Lanes in a x2 or x4 configuration with B-M keys that meet NVMe™ Spec 1.1, and an Intel® Rapid Storage Technology (Intel® RST) 15.5 driver.

Sign up for updates hp.com/go/getupdated

© Copyright 2019 HP Development Company, L.P. The information contained herein is subject to change without notice. The only warranties for HP products and services are set forth in the express warranty statements accompanying such products and services. Nothing herein should be construed as constituting an additional warranty. HP shall not be liable for technical or editorial errors or omissions contained herein.

Bluetooth is a trademark of its proprietor and used by HP Inc. under license. Intel, Optane, vPro, the Intel logo, Intel Core, and Core Inside are trademarks or registered trademarks of Intel Corporation or its subsidiaries in the United States and other countries. USB Type-C™ and USB-C™ are trademarks of USB Implementers Forum. Adobe PDF is a trademark of Adobe Systems Incorporated. ENERGY STAR and the ENERGY STAR mark are registered trademarks owned by the U.S. Environmental Protection Agency. All other trademarks are the property of their respective owners.

4AA7-5484 , 2019 July 5

--

