

WorkCentre®
4250/4260
Letter-size
Black-and-white
Multifunction Device



Xerox® WorkCentre® 4250/4260 Multifunction Device Evaluator Guide



About this Guide

This guide will introduce you to the WorkCentre 4250/4260 black-and-white multifunction device, and aid you in your evaluation process.

Contents

Section 1: Introducing the Xerox WorkCentre 4250/4260 Multifunction Device

- 3 Product Overview
- 5 WorkCentre 4250/4260 Configurations and Accessories

Section 2: Evaluating Workgroup Multifunction Devices

- 7 Overview
- 8 Evaluate Productivity
- 10 Evaluate Versatility
- 11 Evaluate Ease of Installation, Management and Use

Section 3: Technical Specifications, Supplies and Support Resources

- 13 Configuration Summary
- 14 Specifications
- 15 Supplies
- 16 Support and Additional Information Sources

Section 1: Introducing the Xerox WorkCentre 4250/4260

Multifunction Device

Product Overview

Kick office productivity into high gear with the Xerox WorkCentre 4250/4260. It combines world-class copy, print, color scan and fax capabilities with exceptional reliability and ease of use. It's ideal for the busy office that needs large departmental MFP capabilities in a letter-sized, value-priced device.

Save money, save time

Why pay for a huge, full-sized MFP when you primarily work with letter-size documents? Get everything you would expect on a powerful Xerox device, but get it in a small size at a small price!

- Automatic two-sided printing saves paper.
- Fax forward to email feature lets you avoid extra printing.
- Toner cartridge and imaging unit are separate consumables maximizing the life of each.
- Energy save mode is always “on,” reducing your utility bill.
- No more running down the hall to make a copy: A small size means it can be located conveniently close to users.
- ID Card Copy scans both sides of an ID card and prints them face-up on a single sheet of paper.
- No print bottlenecks because the Print Around feature automatically holds any job missing resources (such as a different paper size), and prints the next job in the queue.
- Multiple functions can be accessed at the same time: scan while printing or receiving an inbound fax, and interrupt a print job to make a copy.



Feature-rich and value-minded

The competitively priced WorkCentre 4250/4260 Multifunction Device is loaded with features to help you manage costs without sacrificing power.

- Tailored to your business requirements with configurations ranging from desktop to floor standing models that provide copy, print, scan, email and fax functions. Larger finishing capabilities include collation, stapling and paper input of up to 3,100 sheets.
- Speed to handle heavy demand: Copy and print as fast as 45 ppm (4250) and 55 ppm (4260), with the first page out in as little as 8 seconds (4250) or 6 seconds (4260).
- Color scan capabilities mean you can communicate in color via email or digital file distribution without the additional cost.
- Usage counters let you track and analyze device usage by function for greater cost control.
- Helps your office stay green cost-effectively with Xerox Green World Alliance program; send your used toner cartridges to us for recycling, free of charge.

Easy to install, use and maintain

Unprecedented ease of use and reliability from a truly robust and integrated multifunction.

- Network-ready and easy to install on Microsoft Windows, Apple Macintosh and Linux networks. New global print drivers from Xerox greatly simplify driver management.
- Eases network management chores with remote device monitoring and troubleshooting, using CentreWare® IS embedded web server and CentreWare Web, as well as third party management systems. Automatic email alerts notify administrators or users of events that require attention, such as low toner levels.
- Walk-up ease of use includes an intuitive icon-based color touch screen with easy instructions and Help screens for copy, scan and fax jobs. Plus, you can walk up and print from a USB memory drive or scan and store for convenient printing later – no computer needed.
- Keep confidential documents safe with password protected secure print and encrypted hard disk.
- Award-winning Xerox service and support that's second to none. Our Xerox Total Satisfaction Guarantee ensures you're completely satisfied with your purchase.

WorkCentre 4250/4260 Quick Facts

- Copy and print up to 45/55 ppm
- Standard automatic two-sided copy/print
- 600 x 600 dpi printing (up to 1200 x 1200 enhanced image quality)
- 200,000 pages/month duty cycle (4250)
- 250,000 pages/month duty cycle (4260)
- 256 MB memory (expandable to 512 MB) plus 80 GB Hard Drive
- 100-sheet Duplex Automatic Document Feeder



Print/Copy/Scan/Fax/Email

8.5 x 14 in.

45
55
ppm

WxDxH: (4260XF)

39.5 x 26 x 46 in.

1003 x 660 x 1168 mm



WorkCentre 4260XF with Finisher and 2,000-sheet High-Capacity Feeder

Section 1: Introducing the Xerox WorkCentre 4250/4260

Multifunction Device

Configurations and Accessories



WorkCentre 4250 Copier only

A powerful copier with automatic two-sided copy and optional faxing capabilities

Copy Capabilities

- Copy speed of up to 45 ppm
- Automatic two-sided output
- Standard Duplex Auto Document Feeder (DADF)
- First-Copy-Out Time (FCOT) as fast as 7 seconds
- 600 x 600 dpi copy resolution
- Collation, Reduce/Enlarge 25 to 400 %, Book copying, Mixed-size originals, Edge erase, Image shift, Booklet creation, Covers, Lighten/darken, Transparency Separators, Multi-Up, ID Card Copy, Copy to Hard Drive, Background suppression, Poster

Reliability

- Duty cycle up to 200,000 pages/month
- Recommended volume up to 20,000 pages/month (4250) or 30,000 pages/month (4260)
- One-year on-site warranty, Xerox Total Satisfaction Guarantee



WorkCentre 4250S/4260S

The WorkCentre 4250S/4260S delivers copying, standard network printing and network scanning, plus optional faxing capabilities.

Print Capabilities

- Print speed of up to 45/55 ppm
- Automatic two-sided output
- First-Page-Out-Time (FPOT) as fast as 8 seconds (4250) or 6 seconds (4260)
- 600 x 600 dpi print resolution (up to 1200 x 1200 enhanced image quality)
- Page Description Language: PostScript® 3™ compatibility, PCL® 6 and 5e emulations
- Print Features: Custom page size, Watermark, Secure print, Sample set, Delayed print, Cover selection, Paper selection by attribute, Toner saver, N-Up, Image rotation, Saved settings, Booklet creation, Fit to new paper size, Collation, Print to/from Hard Drive, Print from USB memory drive

Scan Capabilities

- Up to 45/55 ppm scan speed (via DADF)
- Automatic two-sided scanning (via DADF)
- Up to 600 x 600 dpi
- File Formats: PDF, JPEG, TIFF, multi-page TIFF
- Color scanning
- Scan Destinations: Scan to email, Scan to network, Network Scan to TWAIN/WIA applications, Scan to USB memory drive
- Scan Software: Scan to PC Desktop® Personal Edition (includes 1 seat of PaperPort®, OmniPage®, Image Retriever)

Controller

- 400 MHz processor
- Memory: 256 MB (standard), 512 GB (maximum)

- 80 GB hard drive
- Connectivity: 10/100/1000Base-TX Ethernet, USB 2.0

Paper Handling

- DADF: 100-sheet capacity; Supported sizes: 2.8 x 6 in. to 8.5 x 14 in. (70 x 152 mm to 216 x 356 mm); Supported weights: 12.5 – 28 lb. bond/50 – 105 gsm
- Bypass Tray: 100-sheet capacity; Supported sizes: 3.9 x 5.8 in. to 8.5 x 14 in. (99 x 147 mm to 216 x 356 mm); Supported weights: 16 – 53 lb. bond/60 – 200 gsm
- Tray 1: 500-sheet capacity; Supported sizes: 3.9 x 5.8 in. to 8.5 x 14 in. (99 x 147 mm to 216 x 356 mm); Supported weights: 16 – 28 lb. bond/60 – 105 gsm
- Tray 2 (optional): 500-sheet capacity; Supported sizes: 3.9 x 5.8 in. to 8.5 x 14 in. (99 x 147 mm to 216 x 356 mm); Supported weights: 16 – 28 lb. bond/60 – 105 gsm
- High-Capacity Feeder (optional): 2,000-sheet capacity; Supported sizes: 3.9 x 5.8 in. to 8.5 x 14 in. (99 x 147 mm to 216 x 356 mm); Supported weights: 16 – 28 lb. bond/60 – 105 gsm
- Finisher (optional): 500-sheet tray, 50-sheet stapling
- Output Tray: 500-sheet capacity

Reliability

- Duty cycle up to 200,000/250,000 pages/month
- Recommended volume up to 20,000 pages/month (4250) or 30,000 pages/month (4260)
- One-year on-site warranty, Xerox Total Satisfaction Guarantee



WorkCentre 4250X/4260X

Builds on the WorkCentre 4250S/4260S with the addition of:

Fax Capabilities

- Transmission Speed: As fast as 3 seconds per page transmission (via 33.6 Kbps modem)
- Up to 600 x 600 dpi fax resolution
- Up to 200 group-dial locations
- Fax Features: Color Fax send, Address Book, Polling, Mailboxes, Forward to Fax/Email, Secure Fax, PC Fax

WorkCentre 4250XF

Builds on the WorkCentre 4250X/4260X with the addition of:

Paper Handling

- Tray 2: 500-sheet capacity; Supported sizes: 3.9 x 5.8 in. to 8.5 x 14 in. (99 x 147 mm to 216 x 356 mm); Supported weights: 16 – 28 lb. bond/60 – 105 gsm
- Tray 3: 500-sheet capacity; Supported sizes: 3.9 x 5.8 in. to 8.5 x 14 in. (99 x 147 mm to 216 x 356 mm); Supported weights: 16 – 28 lb. bond/60 – 105 gsm
- Tray 4: 500-sheet capacity; Supported sizes: 3.9 x 5.8 in. to 8.5 x 14 in. (99 x 147 mm to 216 x 356 mm); Supported weights: 16 – 28 lb. bond/60 – 105 gsm
- Finisher: 500-sheet tray, 50-sheet stapling

WorkCentre 4260XF

Builds on the WorkCentre 4260X with the addition of:

Paper Handling

- Tray 2: 500-sheet capacity; Supported sizes: 3.9 x 5.8 in. to 8.5 x 14 in. (99 x 147 mm to 216 x 356 mm); Supported weights: 16 – 28 lb. bond/60 – 105 gsm
- High-Capacity Feeder: 2,000-sheet capacity; Supported sizes: 3.9 x 5.8 in. to 8.5 x 14 in. (99 x 147 mm to 216 x 356 mm); Supported weights: 16 – 28 lb. bond/60 – 105 gsm
- Finisher: 500-sheet tray, 50-sheet stapling

Optional

Configure the WorkCentre 4250/4260 to meet your specific needs with a range of optional accessories:

Controller

- 256 MB memory upgrade
- Foreign Device Interface

Paper Input (standard on 4260XF)

- 500-sheet Paper Tray
- 2,000-sheet High-Capacity Feeder
- Finisher: 500-sheet tray, 50-sheet stapling

Fax Capabilities (standard on 4250X/4260X and 4250XF/4260XF)

- Network Fax Server Enablement
- Fax Kit

Management

- Network Accounting Enablement

Miscellaneous

- Two Tray Stand (Trays 3 and 4 – standard on 4250XF)

Section 2: Evaluating Workgroup Multifunction Devices

Overview

Based on continuous study of our customers' productivity requirements, Xerox recommends that the following criteria be used when evaluating which black-and-white MFP to purchase for your office.

Productivity

Can the MFP keep up with the demands of your daily and monthly workloads?

Versatility

Does the MFP deliver the range of capabilities your office requires?

Ease of installation, management and use

How does the MFP simplify deployment, management and daily use?

This section examines each of the above evaluation criteria in greater detail, covering the specific features and performance attributes you should look for in a black-and-white workgroup MFP. When the same criteria are used to evaluate every device under consideration, you'll see how the WorkCentre 4250/4260 Multifunction Device excels against other manufacturers' products.



The WorkCentre 4250/4260 Multifunction Device's full-color touch-screen provides advanced ease-of-use.

Section 2: Evaluating Workgroup Multifunction Devices

Evaluate Productivity

When evaluating productivity, evaluate the level of performance delivered by the MFP, and how that will keep up with your workload. Match that with first-page-out time, and you'll get a sense of real throughput – an indication of how the system will handle the average print jobs (typically 3 to 5 pages long) of a busy small office or workgroup. Does the system offer the media flexibility to support the variety of jobs you'll ask it to perform?

How the WorkCentre 4250/4260 exceeds productivity requirements:

Performance

The WorkCentre 4250/4260 has the power to support a busy workgroup in any fast-paced office environment. With print and copy output speeds of up to 45/55 ppm, the WorkCentre 4250/4260 easily handles demanding day-to-day workloads. Additionally, a first-page-out time as fast as 8/6 seconds for printing and copying minimizes the time users spend waiting for their jobs to start. The 100-sheet Duplex Automatic Document Feeder (DADF) makes scanning multipage originals for copying, scanning or faxing easy. With multiple scan destination options, the WorkCentre 4250/4260 can help you digitize documents for editing and distributing.

Also, the 80 GB internal hard drive improves efficiency with features like Save Print, which stores frequently used documents on the hard drive for quick printing on the go. Plus, the Print Around feature eliminates print bottlenecks by automatically holding any job missing resources (such as a different paper size), and prints the next job in the queue.

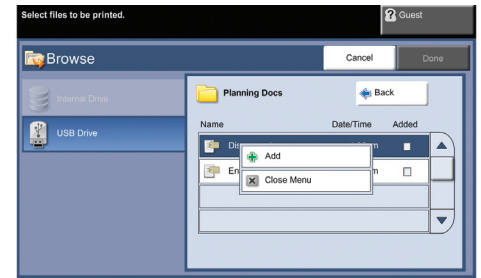
Media Support and Capacity

The WorkCentre 4250/4260 supports a wide range of paper sizes – from 3.9 x 5.8 inches to 8.5 x 14 inches – making it easy to print a variety of office documents on various media types, including plain paper, envelopes, labels, card stock and transparencies. All paper trays support media weights from 16 lbs. to 28 lbs.; the bypass tray supports up to 53 lbs. for heavier paper stock.

The WorkCentre 4250/4260 also provides the media capacity to avoid interruptions and keep users productive. Built to support small, busy workgroups, the WorkCentre 4250/4260 includes a 500-sheet paper tray, plus a 100-sheet bypass tray, and a 100-sheet Duplex Automatic Document Feeder (DADF). For consistently heavy print demands, a second 500-sheet tray and 2,000-sheet High Capacity Feeder are available.

Finishing

Available for both the desktop and floor-standing models, the Finisher adds a 500-sheet tray plus collating and stapling of sets up to 50 pages.



Use the Save Print feature for quick printing of frequently used documents stored on the device's internal 80 GB hard drive.



WorkCentre 4250X/4260X shown with optional second 500-sheet tray, optional High-Capacity Feeder and optional Finisher.

Section 2: Evaluating Workgroup Multifunction Devices

Evaluate Versatility

Does each of the MFPs under evaluation deliver a feature set that both increases office productivity and helps consolidate older office devices? Do they include the print capabilities necessary to keep up with your workload? Are the copy speeds and features appropriate to suit your copy volumes? Have you considered the ways in which powerful scanning capabilities can help optimize office workflows and boost overall efficiency? Does faxing remain a critical office need?

How the WorkCentre 4250/4260 exceeds versatility requirements:

Print Features*

With a black-and-white print speed of up to 45/55 ppm, as well as a first-page-out time as fast as 8/6 seconds, the WorkCentre 4250/4260 delivers the printing performance busy workgroups need to power through heavy print demands. Plus, with 600 x 600 dpi printing (up to 1200 x 1200 enhanced image quality), the WorkCentre 4250/4260 ensures sharp, professional-looking prints.

Building on impressive printing performance is a versatile array of print features, highlighted by:

- **Print Around:** holds any job needing resources and prints the next job in the queue
- **Save Print:** store and reprint commonly printed documents
- **Print from USB memory drive:** prints documents saved on any standard USB memory drive via front-panel port
- **Secure print:** print jobs are held in memory until a PIN code is entered at the front panel, ensuring prints are not left unattended at the MFP
- **Toner save mode:** extends the life of your cartridge and reduces your cost per page without a significant reduction in print quality
- **Watermarks:** adds labels such as “Draft,” “Confidential,” or customized messages to printed documents
- **Booklet creation:** formats and organizes electronic documents for printing as hard copy booklets
- **N-up:** prints multiple original pages onto a single copied page

Copy Features

The WorkCentre 4250/4260 copies documents at speeds of up to 45 ppm (4250) or 55 ppm (4260) – even the longest copy jobs are finished in minutes. Paired with a 100-sheet DADF, the WorkCentre 4250/4260 helps users quickly process multi-page originals.

Plus, a rich set of copy features enables users to create ready-to-distribute hard copies. Copy feature highlights include:

- **Full 8.5 x 14 in. platen glass:** allows copying of legal-size documents without removing staples
- **ID Card Copy:** scans both sides of an ID card and prints it face-up on a single sheet
- **Copy to hard drive:** save copies on the device for future walk-up access
- **Reduce/Enlarge:** 25 to 400 %
- **Multi-up:** prints multiple original pages onto a single copied page



The WorkCentre 4250/4260 Multifunction Device features a full 8.5 x 14 in. platen glass for copying and scanning legal-size documents.

** Print from USB memory drive enables print features on 4250 Copier only model.*

Scan Features*

The WorkCentre 4250/4260 includes powerful scanning – in black-and-white and color – that helps streamline your company’s work processes, serving as a digital on-ramp for distributing, editing and archiving hard copy documents. Built-in file formats include PDF, JPEG, TIFF and multi-page TIFF, and the 50-sheet DADF automates scanning lengthy documents and double-sided originals, scanning pages as quickly as 30 pages per minute.

The WorkCentre 4250/4260 Multifunction Device offers a number of scan destinations to support your work processes, including:

- **Scan to Email:** sends scans to email recipients, with authentication and LDAP for network security and integration
- **Network Scanning:** templates enable distribution of scanned images to multiple predefined locations
- **Scan to USB Memory Device:** sends scanned images to any USB memory drive via front-panel port

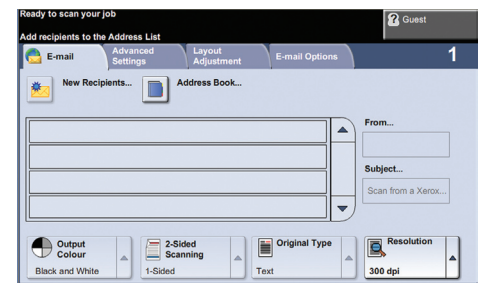
In addition, the WorkCentre 4250/4260 Multifunction Device is packaged with Xerox Scan to PC Desktop® Personal Edition software, which includes the following applications:

- **Nuance® PaperPort® SE:** simplifies the scanning, organizing and sharing of documents
- **OmniPage® SE:** converts paper documents into editable Microsoft Word and Excel files
- **Image Retriever Professional:** automates retrieval of scanned images from Xerox devices

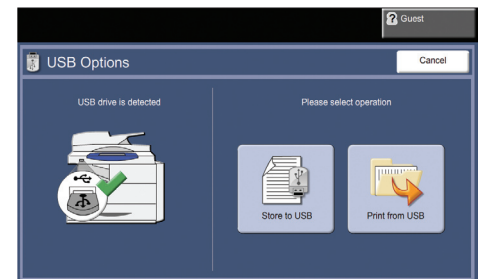
Fax Features

The WorkCentre 4250/4260 offers fax features tailored to individual users and small workgroups. Its fax functionality comprises a 33.6 Kbps transmission speed; compression methods that include MH, MR, MMR, JBIG and JPEG; and 6 MB of dedicated memory. Its feature set includes auto redial, 200 speed dial settings, broadcast fax, delayed fax and secure fax receive. Two key fax features include:

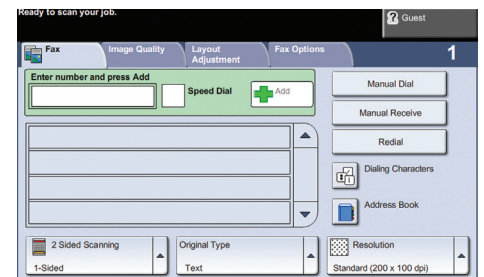
- **PC Fax Send** – transmits paperless faxes directly from your PC via USB or over the network
- **Fax Forward to Email** – forwards received faxes to a specific email address, which saves paper and eases fax archival tasks



Use the touch screen to send scanned documents directly to email recipients – no computer needed.



Conveniently located on the front of the WorkCentre 4250/4260 Multifunction Device, a USB port lets users scan to or print from any standard USB memory drive.



The WorkCentre 4250/4260 includes a host of advanced fax features, easily accessed from the touch screen.

* Scan to USB memory drive enables scan features on 4250 Copier only model.

Section 2: Evaluating Workgroup Multifunction Devices

Evaluate Ease of Installation, Management and Use

Installing a multifunction device can be challenging, whether an IT staff handles deployment in a larger organization or if the MFP is being installed in a smaller office with no IT resources. The process isn't limited to physically placing the unit in its new environment, but also may include integration with an existing network infrastructure. Evaluate the management tools delivered with the MFP, and whether they will ease the task of managing the device. Lastly, think about ease of use. Is the device simple to operate, and will users quickly feel comfortable with it? Are the user interfaces, both the front panel and print driver, well designed and easy to navigate?

How the WorkCentre 4250/4260 exceeds ease of installation, management and use requirements:

Ease of Installation

Easy installation starts with unpacking the MFP and ends when it's powered up, connected to your network and ready to use. The WorkCentre 4250/4260 includes a quick install guide that walks you through the installation of optional accessories, connecting the MFP to a single computer or to the network, connecting to a power source and initial start-up. Settings such as language selection and feature setup are completed either at the MFP's intuitive front panel, or via the use of included remote management software.

Ease of Management

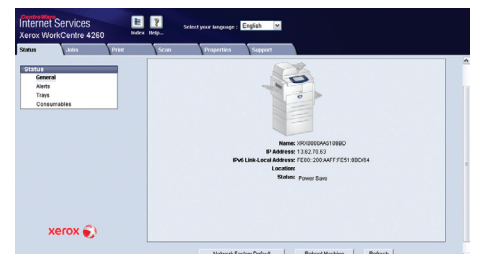
The WorkCentre 4250/4260 eases network management chores with CentreWare® Internet Services, an embedded web server that greatly simplifies remote device monitoring and troubleshooting; CentreWare Web for remote management of device fleets; and built-in support for numerous third party management systems. Automatic email alerts notify administrators or users of events that require attention, such as low toner levels.

Plus, Xerox Standard Accounting further extends the WorkCentre 4250/4260 Multifunction Device's remote management capabilities by allowing in-depth control over quota setting, output limits and reporting.*

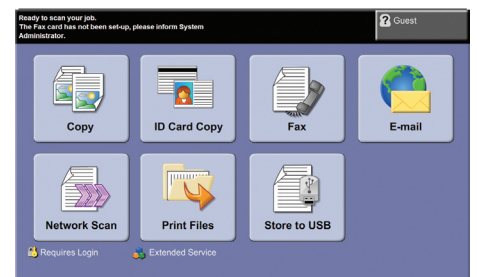
Ease of Use

The WorkCentre 4250/4260 Multifunction Device's cutting-edge, 7-inch, icon-based, full-color touch screen redefines walk-up ease-of-use. Whether printing, copying, scanning, faxing or emailing, the bright, colorful display guides users from start to finish with large, clear, easily recognizable icons. Once a feature is selected, the tab-based interface gives users fast access to the most commonly-accessed features with intuitive navigation to advanced settings. Buttons to the left of the color screen give single-click access to the feature selection screen, the default feature screen (usually copy), job status and machine status. Buttons to the right of the screen include an alphanumeric keypad, Log In/Out and Help.

Similar to the local user interface, the WorkCentre 4250/4260 print drivers give quick, easy access to the most commonly used features like two-sided printing, paper tray selection and collation.



CentreWare IS helps administrators quickly install, configure, troubleshoot and analyze usage of the WorkCentre 4250/4260 Multifunction Device using any standard web browser.



Whether printing, copying, scanning, faxing or emailing, the cutting-edge, 7-inch, full-color touch screen guides users from start to finish with large, easily recognizable icons.

* Not available on 4250 Copier only model.

Section 3: Technical Specifications, Supplies and Support Resources

Configuration Summary

The following sections provide details about the various WorkCentre 4250/4260 configurations, available options and supplies, and more helpful information.



	4250 Copier only	4250S/4260S	4250X/4260X	4250XF	4260XF
Speed	4250: Up to 45 ppm (Letter)/43 ppm (A4); 4260: Up to 55 ppm (Letter)/53 ppm (A4)				
Duty Cycle	4250: Up to 200,000 pages/month; 4260: Up to 250,000 pages/month				
Device Memory (std/max)	256 MB/512 MB plus standard 80 GB Hard Drive				
Paper Handling Paper input	Duplex Automatic Document Feeder: 100 sheets; Custom Sizes: 2.8 x 6 in. to 8.5 x 14 in./70 x 152 mm to 216 x 356 mm				
	Bypass Tray: 100 sheets; Custom sizes: 3.9 x 5.8 in. to 8.5 x 14 in./99 x 147 mm to 216 x 356 mm				
	Tray 1: 500 sheets; Custom sizes: 3.9 x 5.8 in. to 8.5 x 14 in./99 x 147 mm to 216 x 356 mm				
	Optional		Tray 2: 500 sheets		
	Optional		Tray 3: 500 sheets	High Capacity Feeder: 2,000 sheets	
Paper output	500 sheets, automatic two-sided				
Finishing	Optional			Finisher: 500-sheet tray; 50-sheet stapling	
Print First-page-out-time	NA	4250: As fast as 8 seconds; 4260: As fast as 6 seconds			
Print resolution		600 x 600 dpi (1200 x 1200 enhanced image quality)			
Processor/PDL		500 MHz processor, PCL® 6/5e emulation, Adobe® PostScript® 3™ compatibility			
Connectivity		Direct connect via USB	USB 2.0, 10/100/1000 Base-TX Ethernet		
Print features	Print from USB memory drive*	Custom page size, Watermark, Secure print, Sample set, Delayed print, Cover selection, Paper selection by attribute, Toner saver, N-Up, Image rotation, Saved settings, Booklet creation, Fit to new paper size, Collation, Print to/from Hard Drive, Print from USB memory drive			
Copy First-page-out-time	4250: As fast as 7 seconds; 4260: As fast as 5 seconds				
Copy resolution	600 x 600 dpi				
Copy features	Collation, Reduce/Enlarge 25 to 400%, Book copying, Mixed-size originals, Edge erase, Image shift, Booklet creation, Covers, Lighten/darken, Transparency separators, Multi-up, ID Card Copy, Copy to hard drive, Background suppression, Poster				
Fax	Optional		Embedded Fax, LAN Fax, Network Server Fax enablement (optional)		
Fax features	Optional		Color Fax send, Address book, Polling, Mailboxes, Forward to Fax/Email, Secure Fax		
Scan Scan destinations	Scan to USB memory drive*	Scan to Email, Network scanning, Network Scan to TWAIN/WIA applications, Scan to USB memory drive			
Scan features	NA	File formats: PDF, JPEG, TIFF, multi-page TIFF; Scan to PC Desktop® Personal Edition (includes 1 seat of PaperPort®, OmniPage®, Image Retriever), Color scanning			
Accounting	NA	Xerox Standard Accounting (tracks copy, print, scan, fax), Network Accounting enablement (optional), supports optional Xerox Alliance Partner Solutions			
Security	Image Overwrite, Security, Secure Print via USB, Secure Fax**	Image Overwrite Security, Network Authentication, 802.1x, SNMPv3, Audit Log, HTTPS (SSL), Secure Print, Secure Fax, IPSec, Secure LDAP, IPv6, Xerox Secure Access***			
Warranty	One-year on-site Xerox Total Satisfaction Guarantee				

*Enables standard print and scan features

**When Fax Kit is added

***Without EIP functionality

Section 3: Technical Specifications, Supplies and Support Resources

Specifications

Specifications	
Device Management	CentreWare® Internet Services, CentreWare Web, HP® WebJet Admin, Tivoli, Rendezvous
Print Driver Support	Windows® 2003 Server/XP/XP Pro, Vista, Mac OS® X 10.3+, Sun Solaris 9/10, SUSE®, Red Hat® ES, Fedora Core 4, IBM AIX 5, HP-UX 11.0/11i, Novell NetWare, SCO, Xerox Global Print Driver, Xerox Mobile Express Driver
Media Handling Supported Sizes	DADF – Custom Sizes: 2.8 x 6 in. to 8.5 x 14 in./70 x 152 mm to 216 x 356 mm Bypass Tray – Custom sizes: 3.9 x 5.8 in. to 8.5 x 14 in./99 x 147 mm to 216 x 356 mm Tray 1 – Custom sizes: 3.9 x 5.8 in. to 8.5 x 14 in./99 x 147 mm to 216 x 356 mm
Supported Weights	DADF: 12.5 – 28 lb. bond/50 – 105 gsm All Trays: 16 – 28 lb. bond/60 – 105 gsm
Operating Environment	Temperature: 50 to 90° F, 10 to 32° C Relative Humidity: 20 to 80 % Sound Pressure Levels: • Standby Mode: < 39 db(A) • Printing: < 54 dB(A)
Electrical	Power: 110–127 VAC, 50/60 Hz; 220–240 VAC, 50/60 Hz Power Consumption: • Power Save Mode: < 20W • Average: < 794W • ENERGY STAR® qualified
Dimensions	4250 Copier/4250S/4260S: 24.5 in. (W) x 19 in. (D) x 25.5 in. (H) (622 x 483 x 648 mm) Weight: 97 lbs./44 kg 4250X/4260X: 24.5 in. (W) x 19 in. (D) x 25.5 in. (H) (622 x 483 x 648 mm) Weight: 98 lbs./44.5 kg 4250XF/4260XF: 39.5 in. (W) x 26 in. (D) x 46 in. (H) (1003 x 660 x 1168 mm) Weight: 205 lbs./93 kg
Certification	FCC Part 15, Class A, FCC Part 68 Listed UL 60950-1/CSA 60950-1-03 CE Mark applicable to Directives 73/23/EEC, 89/336/EEC and 1999/5/EC, Section 508 ADA

Section 3: Technical Specifications, Supplies and Support Resources

Supplies

	Description	Details	Part Number
Supplies	Toner Cartridge	25,000 pages ¹	106R01409
	Drum Cartridge	80,000 pages ²	113R00755
	Maintenance Kit	200,000 pages ²	115R00063
	Staple Refills	3 cartridges (5,000 staples per cartridge)	008R12941
Accessories	500-sheet paper tray	Increases total paper capacity to 1,100 sheets	097N01524
	2,000-sheet High-Capacity Feeder	Increases total paper capacity to 3,100 sheets	097N01684
	Finisher	500-sheet tray; 50-sheet stapling	097N01715
	Two Tray Stand (Trays 3 and 4)		097S03677
	256 MB memory upgrade		098N02200
	Foreign Device Interface		097N01676
	Network Accounting Enablement		098S04928
	Network Fax Server Enablement		098S04931
Extended Service Agreements	Fax Kit		097N01685
	Annual On-site Service Agreement		E4250/4260SA
	2 Years Additional (total of 3 years) ³		E4250/4260S3
3 Years Additional (total of 4 years) ³		E4250/4260S4	

¹ Declared Yield in accordance with ISO/IEC 19752. Yield will vary based on image, area coverage and media used.

² Yield will vary depending on job run length, media size and orientation.

³ Available for purchase during first 90 days of ownership.

Section 3: Technical Specifications, Supplies and Support Resources

Support and Additional Information Sources

Unrivaled Service and Support

Behind every Xerox product is a large network of customer support that's unrivaled in the industry and available when you need it. Xerox service professionals use leading-edge technologies to keep you up and running. They're even linked to the engineers who designed your product, so you can be confident when you choose Xerox. And genuine Xerox supplies are always readily available.

Total Satisfaction Guaranteed

The exclusive Xerox Total Satisfaction Guarantee, recognized as unique in the industry, covers every Phaser device that has been continuously maintained by Xerox or its authorized representatives under a Xerox express warranty or Xerox Maintenance Agreement. You decide when you're satisfied.

Additional Information Sources

What's in the Box

- WorkCentre 4250/4260 Multifunction Device
- Toner Cartridge (12,000 print capacity)*
- Drum Cartridge (80,000 yield)**
- Software and Documentation CDs (with Print Drivers, Scanning Software, User Manual, Quick Installation Guide and Warranty Statement)
- Power cord, USB cable, fax cord (for X and XF configurations)

WorkCentre 4250/4260 Front Panel

- The front panel offers tools and information pages to help with machine setup, feature selections, operational problem solutions, and media feed and supply issues.

Customer Documentation

- Read Me First
- Quick Reference Guide
- User Manual
- Print Drivers (PostScript and PCL)
- Scan Driver
- Scan Software by Nuance®
- Control Centre Management Software

On the Web

Visit www.xerox.com/office for:

- Product, supplies and support information
- Downloading drivers
- Finding your local reseller
- Online documentation

Visit www.xerox.com/office/support for:

- Support and service information, including the same troubleshooting Knowledge Base used by Xerox Customer Support staff to provide the latest technical information on:
 - Application issues
 - Errors
 - Print quality issues
 - Troubleshooting

* Average standard pages. Declared Yield in accordance with ISO/IEC 19752. Yield will vary based on image, area coverage and media used.

** Average standard pages. Yield will vary depending on job run length, media size and orientation.

Questions? Comments? Problems?

If for any reason you need to contact your Xerox sales representative, please call 1-877-362-6567, or visit us on the web at www.xerox.com/office.

